

BULLETIN

Corpus Christi Geological Society



and

Coastal Bend Geophysical Society



**November
2019
ISSN 0739 5620**

Compliments of
American Shoreline, Inc.



Specializing in
Oil & Gas Exploration
& Wind Energy

802 N. Carancahua
Frost Bank Plaza, Suite 1250
Corpus Christi, Texas 78401
(361) 888-4496

www.amshore.com



Table of Contents

Officers, Committees and Chairpersons for CCGS/CBGS.....	2 & 3
CCGS/CBGS Joint Calendar of Meetings & Events.....	4 & 5
CCGS President’s Letter.....	6
CBGS President’s Letter.....	8-11
Luncheon Meeting Announcement.....	12-14
Lazy Beach Brewing Co. – Dr. Neil Bockoven.....	15
Application of fluvial scaling relationships to reconstruct drainage-basin evolution And sediment routing for the Cretaceous and Paleocene of the Gulf of Mexico.....	16
CCGS Papers available for purchase at the Bureau of Economic Geology.....	43
Geo Link Post.....	44
Type Logs of South Texas Fields.....	45
Professional Directory.....	46



CORPUS CHRISTI GEOLOGICAL SOCIETY

P.O. BOX 1068* C.C.TX. 78403

2019-2020

www.ccgeo.org

OFFICERS

President	Austin Nye	361-452-1435	austin@nyexp.us
President Elect			
Vice President	Randy Bissell	361-885-0110	randyb@headingtonenergy.com
Secretary	Emily Olson	361-542-7434	emily@olsongeo.com
Treasurer	Sebastian Wiedmann	361-946-4430	swiedmann.geo@gmail.com
Past President	Frank Cornish	361-563-9184	frank.cornish@gmail.com
Councilor I	Rick Paige	361-884-8824	rpaigesio2@gmail.com
Councilor II	BJ Thompson	361-816-2326	william.thompson426@gmail.com

AAPG DELEGATE

EDITORS

Bulletin Editor	Marian Wiedmann	361-855-2542	wiedgulf@gmail.com
Bulletin Tech. Editor	Jeanie Timmermann	361-883-1492	jeanie@industrialcorrosion.net
Web Master	Josh Pollard	361-654-3100	support@interconnect.net

GEOLOGICAL SOCIETY COMMITTEES & CHAIRPERSONS

MEMBERS PLEASE NOTE COMMITTEES CONTINUE TO FUNCTION WITHOUT A NAMED CHAIR, ALL ARE WELCOME TO ANY COMMITTEE THAT SUITES YOUR INTEREST

Advertising/Bus. Cards	Robby Sterett	361-739-5618	robert.sterett@gmail.com
Arrangements	Wes Gisler & Will Graham	830-239-4651 361-885-0110	arrangements@ccgeo.org willg@headingtonenergy.com
Continuing Education			
Education	Dawn Bissell	361-960-2151	bissells@swbell.net
Scholarship Program	Dawn Bissell	361-960-2151	bissells@swbell.net
Fishing Tournament	Leighton Devine	361-882-8400	ldevine@suemaur.com
History	OPEN (Ray Govett)	361-855-0134	ray30@hotmail.com
Membership	Dorothy Jordan Randy Bissell	361-885-0110 361-885-0113	dorothyj@headingtonenergy.com randyb@headingtonenergy.com
Type Logs			



COASTAL BEND GEOPHYSICAL SOCIETY
P.O. BOX 2741*C.C. TX. 78403
2017-2018

OFFICERS

President	Dr. Subbarao Yelisetti	361-593-4894	subbarao.yelisetti@tamuk.edu
Vice President	Samara Omar	361-902-2826-office 361-446-7334-mobile	Samara_Omar@eogresources.com
Secretary/Treasurer	Erik Scott	361-902-2880-office 361-800-3364-mobile	Erik_Scott@eogresources.com
Golf Chairman	Mark Wiley	361-902-2844-office 361-445-6712-mobile	Mark_Wiley@eogresources.com
Scholarship Chairman	Matt Hammer	361-888-4792 361-563-6137	mhammer@royalcctx.com

**Visit the geological
web site at
www.ccgeo.org**

CCGS/CBGS JOINT MEETING SCHEDULE 2019-2020

September 2019							October 2019							November 2019						
S	M	T	W	Th	F	S	S	M	T	W	Th	F	S	S	M	T	W	Th	F	S
1	2	3	4	5	6	7			1	2	3	4	5						1	2
8	9	10	11	12	13	14	6	7	8	9	10	11	12	3	4	5	6	7	8	9
15	16	17	18	19	20	21	13	14	15	16	17	18	19	10	11	12	13	14	15	16
22	23	24	25	26	27	28	20	21	22	23	24	25	26	17	18	19	20	21	22	23
29	30						27	28	29	30	31			24	25	26	27	28	29	30

Thursday, Sept. 26th at 5:30-8:00p.m. Kickoff at Hoegemeyer's Barbeque Barn.

12-1:00pm
 Speakers: Richard Parker
 Geophysicist
 w/Schlumberger
 Edgar Velez geomechanics
 domain champion for the
 western hemisphere

11:30-1:00 pm
 Speaker: Dr. Neil Bockoven
 "Early Human Interactions &
 Migrations—Three Mysteries"

December 2019							January 2020							February 2020						
S	M	T	W	Th	F	S	S	M	T	W	Th	F	S	S	M	T	W	Th	F	S
1	2	3	4	5	6	7				1	2	3	4							1
8	9	10	11	12	13	14	5	6	7	8	9	10	11	2	3	4	5	6	7	8
15	16	17	18	19	20	21	12	13	14	15	16	17	18	9	10	11	12	13	14	15
22	23	24	25	26	27	28	19	20	21	22	23	24	25	16	17	18	19	20	21	22
29	30	31					26	27	28	29	30	31		23	24	25	26	27	28	29

Dr. Charles Puryear-Senior
 Research Geophysicist at
 Multi-Physics Technologies

CCGS/CBGS Joint Meeting Schedule 2019-2020

March 2020							April 2020							May 2020						
S	M	T	W	Th	F	S	S	M	T	W	Th	F	S	S	M	T	W	Th	F	S
1	2	3	4	5	6	7				1	2	3	4						1	2
8	9	10	11	12	13	14	5	6	7	8	9	10	11	3	4	5	6	7	8	9
15	16	17	18	19	20	21	12	13	14	15	16	17	18	10	11	12	13	14	15	16
22	23	24	25	26	27	28	19	20	21	22	23	24	25	17	18	19	20	21	22	23
29	30	31					26	27	28	29	30			24	25	26	27	28	29	30
																				31

Calendar of Meetings and Events

Calendar of Area Monthly Meetings

Corpus Christi Geological/Geophysical Society.....	Third Wed.—11:30a.m.
SIPES Corpus Christi Luncheons.....	Last Tues.—11:30a.m.
South Texas Geological Society Luncheons.....	Second Wed—noon San Antonio
San Antonio Geophysical Society Meetings.....	Fourth Tuesday
Austin Geological Society.....	First Monday
Houston Geological Society Luncheons.....	Last Wednesday
Central Texas Section of Society of Mining, Metallurgy & Exp.....	2 nd Tues every other month in San Antonio



CCGS (Non-) President's Letter

First, I want to commend the CBGS for hosting a great lunch-and-learn seminar at the AEP Building conference room in October. The presentation by Schlumberger on VSPs was super. These kinds of informal presentations will be a fun part of our annual schedule and we should all look forward to the next lunch-and-learn in the spring.

Our season's first CCGS-hosted luncheon will be on **November 20**, *upstairs* at Water Street Seafood Company (above where our meetings were last year). Our lead-off speaker will be Dr. Neil Bockoven talking on the interactions of Neanderthals and Homo sapiens. Before he retired, Neil supervised ExxonMobil's activities in South Texas, particularly the King Ranch. Many in our Society got to know Neil in that role, and it will be great to welcome him to Corpus Christi. Please plan to attend the fascinating luncheon this month. *BTW - I hear Austin's ordered up a great meal for our luncheons!*

Just a reminder, our luncheon schedule is changed. The CCGS will hold regular luncheon meetings at Water Street Seafood Co. in the following months. The luncheon cost is \$30, students are sponsored.

- November
- January
- March (depending upon how Spring Break occurs)
- April
- May

The CBGS will host lunch-and-learns at the AEP (basement) conference room in these months with pizza and drinks for \$15:


- October
- February
- Others as opportunities arise.

About our Society. This year, the Corpus Christi Geological Society has a core membership of about 200 professionals and 50 students. We have money in our operating funds and significant savings dedicated to geoscience education and enrichment. The Board has taken several small steps to make our activities match our membership numbers and general participation interests of our members. So, in most regards, the CCGS is a healthy, somewhat wealthy, remarkably generous, and active professional Society. We have a distinguished senior membership and delightful young professionals and students involved in many facets. I am happy and proud to be a member of the CCGS – you should be, too. I hope for continued support with your participation, membership, generosity, and leadership.

As always, if you have any ideas for luncheon speakers or meeting topics, please let me know.

Randy Bissell
CCGS Board and Membership Czar
randyb@headingtonenergy.com

SPONSORS



Nueces Energy, Inc.
P.O. Box 252
Corpus Christi, Texas 78403
Office: (361) 884-0435
Fax: (361)-654-1436
www.nuecesland.com

Nueces Energy, Inc. is a complete land services company in the business of providing professional landmen and project management to various energy related jobs primarily in the oil and gas industry.

With over 30 years of industry experience, we specialize in determining surface and subsurface ownership and negotiating and acquiring contracts, rights of way agreements, and easements to provide our clients with the legal right to explore and develop oil and gas resources. We provide a full service land company capable of managing any project no matter how large or small.



THUNDER EXPLORATION, INC.

Celebrating 30+ years of prospect generation and exploration in the following South Texas plays and trends.

Frio	San Miguel	Edwards
Jackson	Austin Chalk	Pearsall
Yegua	Eagle Ford	Sligo
Wilcox	Buda	Cotton Valley
Olmos	Georgetown	Smackover

Thunder is currently seeking non-operated working interest participation in projects and prospects.

Contact **Walter S. Light Jr.**
President/Geologist
713.823.8288
EMAIL: wthunderx@aol.com

Headington Oil Company is now...



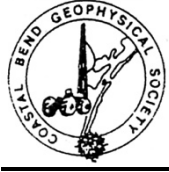
HEADINGTON
ENERGY PARTNERS, LLC

Proudly operating in South Texas.

For more information contact:
Randy Bissell, randyb@headingtonenergy.com or call 361-885-0113



Offices in Corpus Christi, Sarita, and McKinney, Texas - Exploring and Developing properties
In South Texas, Permian Basin, East Texas & Oklahoma



CBGS President's Letter

CBGS Board 2019-2020

Dr. Subbarao Yeliseti- President

Samara Omar- Vice President

Erik Scott- Secretary/ Treasurer

Matt Hammer - Scholarship Chair

Mark Wiley - Golf Chair

Education – Robert Schneider

CBGS Scholarships

The Coastal Bend Geophysical Society (CBGS) has donated \$10,000 to the Department of Physics and Geosciences, Texas A&M University-Kingsville in support of the multidisciplinary Petrophysics Graduate Program that has been requested. These funds will be used as scholarships in attracting quality graduate students.

The board awarded three scholarships of \$2,000 each to undergraduate geophysics majors from Texas A&M University-College Station, University of Houston and Texas A&M University-Kingsville in 2017-2018. We will be awarding the scholarships again this year.

Scholarship Requirements

Criteria for awarding the Scholarship from Coastal Bend Geophysical Society of Corpus Christi, Texas:

1. Scholarships are open to undergraduate or graduate students.
2. Must have declared major in Geophysics, or Geology with a concentration in Geophysics or Petrophysics.
3. Preference is given to students attending Coastal Bend schools (TAMU-K, TAMU-CC and Del Mar College), then to Coastal Bend natives attending other universities.
4. Must have a GPA of at least 3.0 and be in good standing with the school.
5. Must make effort to attend a Coastal Bend Geophysical Society Meeting in Corpus Christi Texas after being awarded a scholarship to be recognized by the society.

News

- According to Baker Hughes, U.S. oil drillers cut rigs to lowest since May 2017. The current rig count is 719. There were 866 active rigs in the same week a year ago.
- At the time of writing this report, U.S. crude futures were trading around \$59 a barrel and expected to remain so for the balance of 2019, and \$55 in calendar 2020 as reported by Scott DiSavino on reuters.com.
- The U.S. active oil and gas rig count so far this year has averaged 988.

- According to the analysts at Simmons & Co forecast, the average combined oil and gas rig count will slide from a four-year high of 1,032 in 2018 to 970 in 2019 and 955 in 2020 before rising to 997 in 2021 as reported by Scott DiSavino on reuters.com.
- According to the U.S. Energy Information Administration (EIA) projections, U.S. crude output would rise by 74,000 barrels per day (bpd) in October to a record high of 8.84 million bpd.

CBGS Business

CBGS currently has 42 active members, 4 honorary members, and 40 student members. Raised \$1,200 towards student scholarships through membership revenue.

CBGS workshops/talks

CBGS organized the October luncheon talk entitled “A refresher in the understanding and use of VSPs, checkshots and synthetic seismograms” by Richard Parker, Geophysicist w/Schlumberger and Edgar Velez, Geomechanics domain champion for the western hemisphere. Raised \$365 towards student scholarships.

CBGS is looking forward to offer workshops/talks in the future. Topic/speaker suggestions are welcome. Email your suggestions to Samara_Omar@eogresources.com or Subbarao.Yelisetti@tamuk.edu

Golf Tournament

CBGS organized its annual **Golf Tournament** to fund its scholarship program in the first week of October, 2019 at Northshore Country Club. Raised ~\$1,600 for the scholarship fund.

If you are interested in our next Golf Tournament, please contact Mark Wiley at Mark_Wiley@eogresources.com

New Degree Tracks at TAMUK

- Texas A&M University-Kingsville (TAMUK) started its first cohort of MS Petrophysics program in Fall 2018. If you are interested in joining this program in Fall 2019, please contact the graduate coordinator for MS in Petrophysics, Dr. Subbarao Yelisetti at Subbarao.Yelisetti@tamuk.edu.
- **BS degree in Geophysics, Minor in Geophysics and Certification in Geophysics** offered at Texas A&M University-Kingsville since Fall 2017. Interested students can contact Dr. Subbarao Yelisetti (Subbarao.Yelisetti@tamuk.edu) for additional information.

Seismology class

PHYS 5385 Seismology class will be offered in Spring 2020 at Texas A&M University-Kingsville. This is available for the professional community as well as our students. You can sign up as a “transient” student in order to take classes without actually enrolling in the school. If anyone in the professional community wishes to sign up for this, please contact, Dr. Subbarao Yelisetti Subbarao.Yelisetti@tamuk.edu.

SEG Distinguished Lecture

CBGS and TAMUK SEG student chapter organized 2018 SEG Distinguished Lecture in January, 2018. We wish to organize many more lectures in the future.

Ocean Discovery Lecture

The Department of Physics and Geosciences at Texas A&M University—Kingsville is organizing an Ocean Discovery lecture on November 7th, 2019, 4:00-5:30 pm, Peacock Auditorium. The speaker is Dr. Matthew Hornbach from Southern Methodist University. The title of the talk is “Forecasting slope failure and slide-generated tsunami hazards with IODP data”. More information about the talk and the speaker can be found below or at the following link.

<https://usoceandiscovery.org/lecture-series/#1486138175030-dde8fc82-42a5>

Education/Events

-SEG

SEG 2020 annual meeting will be held in Houston, TX from Oct 11-16th. See <https://seg.org/AM/2020/> for additional details.

See <https://seg.org/Education/Lectures/Distinguished-Lectures> for information about upcoming SEG distinguished lecture in Houston and other locations.

See <https://seg.org/Education/Lectures/Honorary-Lectures> for SEG honorary lecture locations in Texas.

-AGU

2019 Fall AGU annual meeting will be held in San Francisco, CA from December 9-13th, 2019. <https://fallmeeting.agu.org/2018/future-meetings/>

Monthly Saying

"You can't get the grease without a lease" - Anon

Monthly Summary

Texas Oil and Gas Info	Current Month	Last Month	Difference	
Texas Production	MMBO/BCF	MMBO/BCF	MMBO/BCF	
Oil	122.9	131.2	-8.3	June
Condensate	15.6	17.3	-1.7	June
Gas	743.2	787.9	-44.7	June
	Current Month	Yr to date - 2019	Yr to date - 2018	
Texas Drilling Permits	796	8922	10414	September
Oil wells	197	2182	2693	September
Gas wells	56	541	657	September
Oil and Gas wells	474	5495	6340	September
Other	10	94	104	September
Total Completions	747	7074	8041	September
Oil Completions	583	5307	6243	September
Gas Completions	137	1421	1336	September
New Field Discoveries	1	12	17	September
Other	2	22	29	September

Subbarao Yelisetti
President, CBGS



**CORPUS CHRISTI GEOLOGICAL SOCIETY
COASTAL BEND GEOPHYSICAL SOCIETY**



**LUNCHEON MEETING
ANNOUNCEMENT**

November 20, 2019

- Location:** Water Street Events (Previously the Seafood Company Restaurant) 300 Block N. Water Street, CC, TX 78401
- Student Sponsor:** Imagine Resources, Nye Exploration, Viper Exploration, Ltd.
- Bar Sponsor:** Sponsorship Opportunities Available!!!!!!
- Time:** 11:30 am Bar, Lunch follows at 11:45 am, Speaker at 12:00 pm
- Cost:** \$30.00 (additional \$10.00 surcharge without reservation; **NO SHOW** may be billed and non-RSVP attendees cannot be Guaranteed a lunch); FREE for students with reservation (discounted by our generous sponsors)!
- Reservations:** Please RSVP by 4PM on FRIDAY Nov. 15th before the meeting!
E-Mail: arrangements@ccgeo.org

Please note that luncheons RSVPs are a commitment to the Water Street Events and must be paid even if you can't attend the luncheon.

**SPONSORSHIPS OPPORTUNITIES ARE AVAILABLE!
IF YOU WOULD LIKETO SPONSOR, PLEASE CONTACT US AT:
arrangements@ccgeo.org**

NYE
Exploration & Production, LLC

802 N. Carancahua, Suite 1840
Frost Bank Plaza
Corpus Christi, TX 78401
www.nyexp.us

Imagine
Resources, LLC

**VIPER
EXPLORATION,
LTD**

CCGS Luncheon Presentation – Wednesday, Nov. 20, 2019

Water Street Seafood Co. Upstairs

Early Human Interactions and Migrations – Three Mysteries

Neil Bockoven, PhD

Mystery One: Neanderthals lived in Europe for more than 250,000 years. When we (*Homo sapiens*) arrived on the scene about 45,000 years ago, they disappeared quickly – forever. What happened? *Five major factors played a role in the Neanderthal demise: 1) Homicide by modern humans, 2) Disease brought by modern humans, 3) Competition for food and resources, 4) Our larger population absorbed their smaller one, and 5) Climate change brought on by the Campanian Ignimbrite eruption.*

Mystery Two: Did we mate with Neanderthals and have viable offspring? If so, what genetics did we get from them? *Yes, but only interbreeding between modern human males and Neanderthal females seems to have produced viable offspring. From the Neanderthal genes we got enhanced viral immunity, but also predispositions for ailments such as lupus, Crohn's disease, type 2 diabetes, actinic keratosis, and depression.*

Mystery Three: Why is an Australian aborigine more genetically similar to a Scandinavian than an African tribesman is to a member of a different African tribe? *A small subset of the African population (with their relative lack of genetic diversity) left Africa about 70,000 years ago, and they populated the rest of the world.*

In addition to answering these and other intriguing questions, we'll discuss the huge breakthroughs coming from ancient DNA analysis, and the different information we get from the three types of DNA.

Neil Bockoven is an award-winning PhD geologist and journalist with 35 years of experience in industry.

He has been featured in: Geological Society of America Bulletin, Association of Petroleum Geologists Bulletin, Virginia Journal of Science and many other scientific publications. He is a repeat guest on some of the largest radio talk shows in the country, where he's discussed a variety of science-based subjects as well as his books. Neil is a member of the Archaeological Institute of America, the Archaeological Conservancy, and is an Impact Member of the Center for Study of the First Americans.

Neil worked as a geologist for Exxon/ExxonMobil in Denver, Midland, Houston, New Orleans and Albuquerque. He coordinated dozens of joint ventures with oil and gas companies, including rights to the entire King Ranch in Texas.

Neil attended The College of William and Mary, where he was a member of the state champion swim team, and received a Bachelor of Arts. He went on to The University of Texas at Austin, earning a masters and doctorate. He has published articles on topics as diverse as the geology of huge volcanic calderas of the Sierra Madre Occidental Mountains of Mexico to sexual dimorphism in Astarte clams.

His current interests center on the interaction between Early Modern Humans and Neanderthals during the Paleolithic Age, and the amazing related discoveries being made through archaeology and genetics. In addition to *Moctu and the Mammoth People*, Neil has also published a related children's book titled *When We Met Neanderthals*.

For more about Neil Bockoven visit his Facebook page at www.facebook.com/authorneilbockoven/ or his web site at www.neilbockoven.com.

Also - Join Neil at Lazy Beach Brewing Co., on Wednesday evening, Nov. 20th, for an informal presentation to the community and book signing. 5:30 and free to the public.

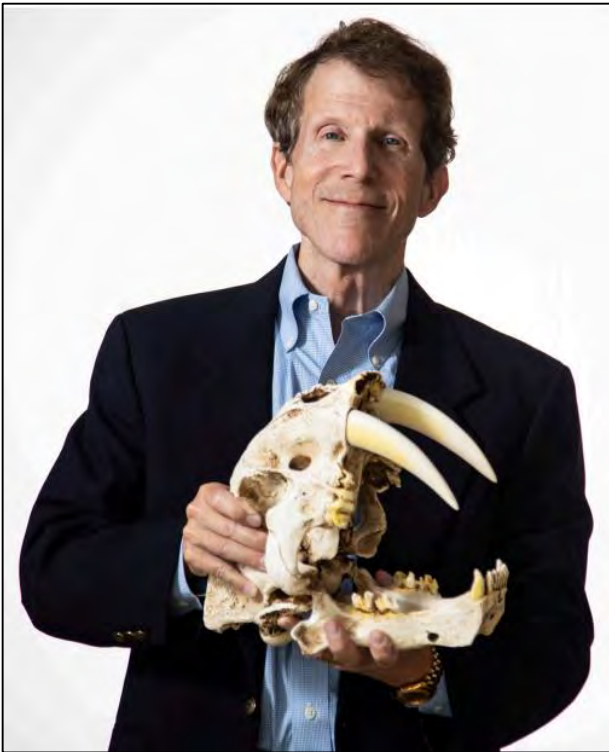


Corpus Christi
Geological Society



Dr. Neil Bockoven

“When WE met Neanderthals - there *were* Fireworks!”



Neil Thomas Bockoven is an award-winning PhD geologist and journalist with 35 years of experience in minerals exploration. He has been featured in: Geological Society of America Bulletin, Association of Petroleum Geologists Bulletin, Virginia Journal of Science and many other scientific publications. He has appeared multiple times on several popular radio talk shows to discuss a variety of science-based subjects and his books.

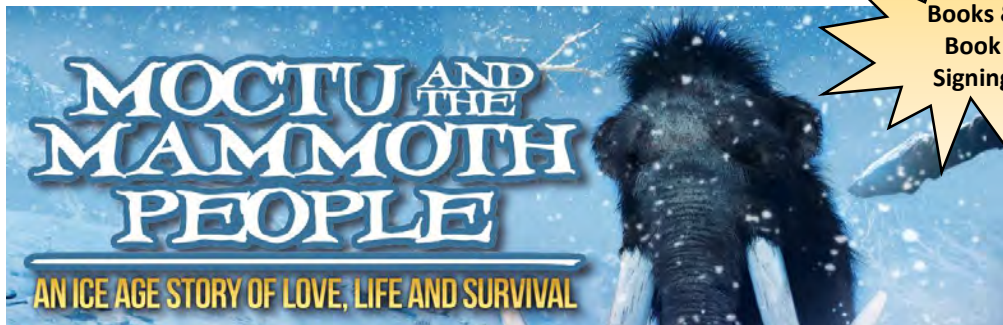
Neil worked as a geologist for Exxon/ExxonMobil in Denver, Midland, Houston, New Orleans and Albuquerque. He coordinated dozens of joint ventures with oil and gas companies, including rights to the entire King Ranch in Texas. Neil attended The College of William and Mary, where he was a member of the state champion swim team, and received a Bachelor of Arts. He went on to The University of Texas at Austin, earning a masters and doctorate.

Neil has published articles on topics as diverse as the geology of huge volcanic calderas of the Sierra Madre Occidental Mountains of Mexico to sexual dimorphism in Astarte clams. **His current interests center on the interaction between Early Modern Humans and Neanderthals during the Paleolithic Age, and the amazing related discoveries being made through archaeology and genetics.**

Wednesday, November 20, 2019 6:00-7:30 pm

Lazy Beach Brewing Co., Corpus Christi, Texas

FREE ADMISSION – All Ages



Author of the Children's Science Book – [When We Met Neanderthals](#)



Application of fluvial scaling relationships to reconstruct drainage-basin evolution and sediment routing for the Cretaceous and Paleocene of the Gulf of Mexico

Kristy T. Milliken^{1,*}, Michael D. Blum^{1,*}, John W. Snedden^{2,*}, and William E. Galloway^{2,*}

¹Department of Geology, University of Kansas, Lawrence, Kansas 66047, USA

²Institute for Geophysics, The University of Texas at Austin, Austin, Texas 78758, USA

ABSTRACT

Fluvial systems represent a key component in source-to-sink analysis of ancient sediment-dispersal systems. Modern river channels and channel-related deposits possess a range of scaling relationships that reflect drainage-basin controls on water and sediment flux. For example, channel-belt sand-body thicknesses scale to bankfull discharge, and represent a reliable first-order proxy for contributing drainage-basin area, a proxy that is more robust if climatic regimes can be independently constrained. A database of morphometrics from Quaternary channel belts provides key modern fluvial system scaling relationships, which are applied to Cretaceous- to Paleocene-age fluvial deposits. This study documents the scales of channel-belt sand bodies within fluvial successions from the northern Gulf of Mexico passive-margin basin fill from well logs, and uses scaling relationships developed from modern systems to reconstruct the scale of associated sediment-routing systems and changes in scale through time.

We measured thicknesses of 986 channel-belt sand bodies from 248 well logs so as to estimate the scales of the Cretaceous (Cenomanian) Tuscaloosa-Woodbine, Paleocene–early Eocene Wilcox, and Oligocene Vicksburg-Frio fluvial systems. These data indicate that Cenozoic fluvial systems were significantly larger than their Cenomanian counterparts, which is consistent with Cretaceous to Paleocene continental-scale drainage reorganization that routed water discharge and sediment from much of the continental United States to the Gulf of Mexico. At a more detailed level, Paleocene–early Eocene Wilcox fluvial systems were larger than their Oligocene counterparts, which could reflect decreases in drainage-basin size and/or climatic change within the continental interior toward drier climates with less runoff. Additionally, these data suggest that the paleo-Tennessee River, which now joins the Ohio River in the northernmost Mississippi embayment of the central United States, was an independent fluvial system, flowing southwest to the southern Mississippi embayment, or directly to the Gulf of Mexico, through the early Eocene.

*E-mail: milliken@ku; mblum@ku.edu, jsnedden@ig.utexas.edu, galloway@austin.utexas.edu

Changes in scaling relationships through time, and interpreted changes in the scales of contributing drainage basins, are generally consistent with previously published regional paleogeographic maps, as well as with newly published maps of paleodrainage from detrital-zircon provenance and geochronological studies. As part of a suite of metrics derived from modern systems, scaling relationships make it possible to more fully understand and constrain the scale of ancient source-to-sink systems and their changes through time, or cross-check interpretations made by other means.

INTRODUCTION

Source-to-sink (S2S) approaches to stratigraphic research focus on reconstructing and predicting sediment production, transport, and storage through fluvial systems, delivery rate to deltaic and deepwater sediment sinks, and how allogenic signals and autogenic self-organization are preserved in the ancient stratigraphic record (Romans et al., 2016). Scaling relationships represent an important part of an S2S approach, because sediment and water flux, and the dimensions of modern sediment-dispersal system segments, scale to contributing drainage area (e.g., Syvitski and Milliman, 2007; Sømme et al., 2009; Helland-Hansen, 2016). Scaling relationships in sediment-dispersal systems generally follow power laws, where absolute dimensions are proportional to drainage-basin size and the corresponding flux of water and sediment, and parameters like grain size and transport slope scale inversely (e.g., Sømme et al., 2009). From the above, the scales and properties of segments within a sediment-dispersal system correlate to water and sediment flux from the drainage basin, and more importantly, the scales and properties of one segment within a sediment-dispersal system are therefore inherently related to, and can be predicted from, the scales and properties of another.

This paper applies empirical scaling relationships from modern systems to reconstruct the scales of fluvial systems for Late Cretaceous, Paleocene–earliest Eocene, and Oligocene sediment-dispersal systems of the northern Gulf of Mexico sedimentary basin from subsurface data, in this case well logs. This paper is conceptually linked to those of Blum et al. (2017), who recon-

structured drainage areas for the same stratigraphic intervals from detrital zircon U-Pb provenance and geochronological data; Snedden et al. (2018), who quantified changes in the scale of Gulf of Mexico basin-floor fans through time from subsurface data; and Xu et al. (2017), who focused on reconstructing early Miocene fluvial systems from both detrital-zircon and well-log data. Collectively, these papers are designed to use the data-rich northern Gulf of Mexico margin to test the utility of a semiquantitative S2S approach to reconstructing paleodrainage and sediment routing at the continental scale, and prediction of the scales of basin-floor fans in the terminal sink.

■ GULF OF MEXICO STRUCTURAL AND STRATIGRAPHIC CONTEXT

The northern Gulf of Mexico is a well-known sedimentary basin, with many studies that document tectonic evolution of the basin, as well as the Mesozoic to Cenozoic stratigraphic framework (see the summary in Galloway, 2008, and references herein). Early to middle Mesozoic paleogeographic evolution of the early northern Gulf of Mexico can be tied to initial rifting and breakup of Pangea, distribution and nature of basement crust (Sawyer et al., 1991; Peel et al., 1995; Bird et al., 2005), margin type (Marton and Buffler, 1993), and Jurassic salt deposition (Martin, 1978; Sawyer et al., 1991). During the Jurassic to middle Cretaceous, the Gulf of Mexico margin was dominated by a carbonate ramp with little clastic sediment dispersal to deepwater environments (Rainwater, 1967; Anderson, 1980; Winker and Buffler, 1988; Yurewicz et al., 1993).

Studies pertinent to early Gulf of Mexico sediment source regions suggest there was a continuous upland that connected the Appalachian and Ouachita Mountains through the early Cretaceous (Thomas, 1985; Viele and Thomas, 1989; Hale-Erlich and Coleman, 1993), followed by the initial breaching of the Mississippi embayment during the late Cretaceous to early Paleocene, perhaps in response to hot-spot activity that resulted in thermally generated uplift, erosion, and subsidence as the hot-spot location moved to the east (Van Arsdale and TenBrink, 2000; Cox and Van Arsdale, 2002; Whitaker and Engelder, 2006; Matton and Jébrak, 2009). Igneous activity (Moody, 1949; Kidwell, 1951; Baksi, 1997) and regional uplift (Anderson, 1980; Ewing, 1991; Harry and Londono, 2004) are linked to the late Cretaceous initiation of the modern Mississippi embayment (Cushing et al., 1964; Ervin and McGinnis, 1975; Kane et al., 1981; Baksi, 1997). In addition to a broad deepening of basement from onshore to offshore, a number of basement arches or broad uplifts rim the northern Gulf of Mexico basin (Bornhauser, 1958; Martin, 1978; Dallmeyer, 1989; Ewing, 1991) (Fig. 1) and influence sediment routing and accumulation patterns by subtly affecting accommodation and deformation. Throughout the Mesozoic to Cenozoic, these local, long-lived uplifts and arches impacted deposition and funneled sediment fairways through the interior salt basins, Mississippi embayment, Houston embayment, and Rio Grande embayment (Jung Echols and Malkin, 1948; Granata, 1963; Seni and Jackson, 1984; Lawless and Hart, 1990; Nunn, 1990; Xue, 1997; Ambrose et al., 2009; Adams and Carr, 2010) (Fig. 2).

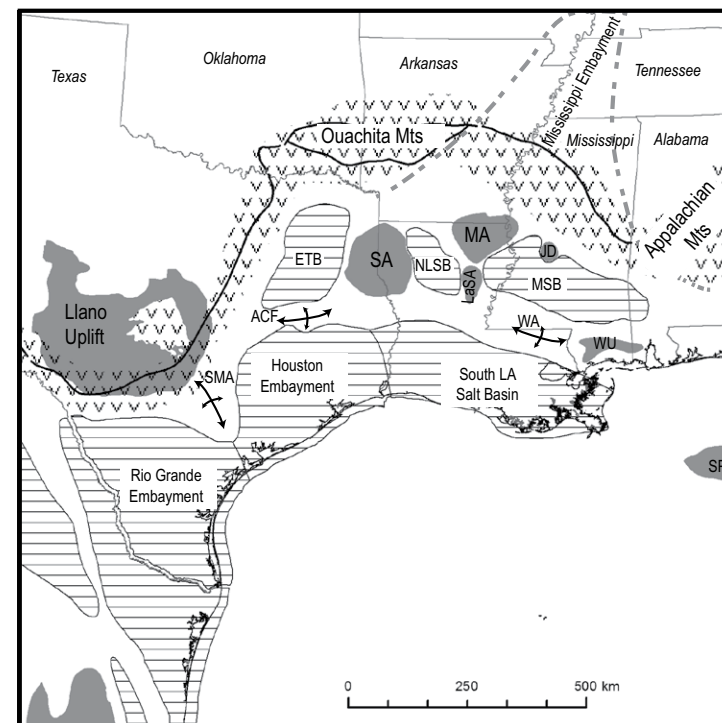


Figure 1. Northern Gulf of Mexico basin tectonic and structural elements. Modified from Ewing (1991) and Whitaker and Engelder (2006). SMA—San Marcos Arch; ETB—East Texas Basin; ACF—Angelina Caldwell flexure; SA—Sabine Arch; NLSB—North Louisiana (LA) Salt Basin; MA—Monroe Arch; LaSA—LaSalle Arch; JD—Jackson Dome; MSB—Mississippi Salt Basin; WA—Wiggins Arch; WU—Wiggins uplift; SP—Southern Platform. V pattern indicates high-relief uplifts; solid gray pattern and perpendicular arrows indicate low-relief uplifts and persistent arches; horizontal lines pattern indicates subsiding basins; gray dashed line outlines Mississippi Embayment.

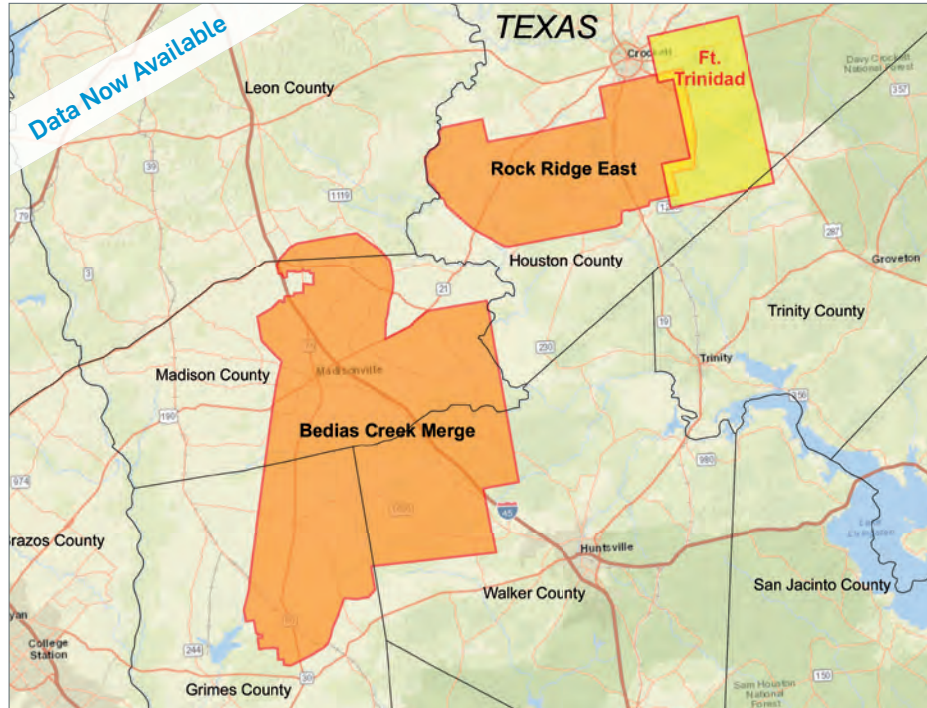
Cenomanian Tuscaloosa-Woodbine fluvial-deltaic systems represent the first instance that clastic sediments prograded across the preexisting broad carbonate-dominated shelf and delivered a significant volume of sediment to the shelf margin and beyond (Barrell, 1997; Funkhouser et al., 1981; Dubiel et al., 2003). Commencing in the late Paleocene to early Eocene and persisting throughout the Oligocene, clastic influx significantly increased and was funneled through large fluvial systems centered in the Houston, Mississippi, and Rio Grande embayments (Stearns MacNeil, 1966; Galloway, 2005; Galloway et al., 2011) (Fig. 3).

In the Jurassic to Cenozoic strata, workers have long recognized large-scale packages of sediment that are bounded above and below by regional flooding surfaces. They have described these packages as transgressive-regressive



New Ft. Trinidad 3D Survey Houston and Trinity Counties, TX

YOU'VE ARRIVED



CGG continues to expand its East Texas footprint with high-quality 3D projects while illuminating the stacked pay formations.

Data is already available from our Bedias Creek Merge and Rock Ridge East projects. Orthorhombic PSTM from our newest project Ft. Trinidad is also now available.

The right data, in the right place, at the right time

Scott Tinley
☎ +1 832 351 8544
✉ scott.tinley@cgg.com

Cheryl Oxsheer
☎ +1 832 351 8463
✉ cheryl.oxsheer@cgg.com



cgg.com/ROP



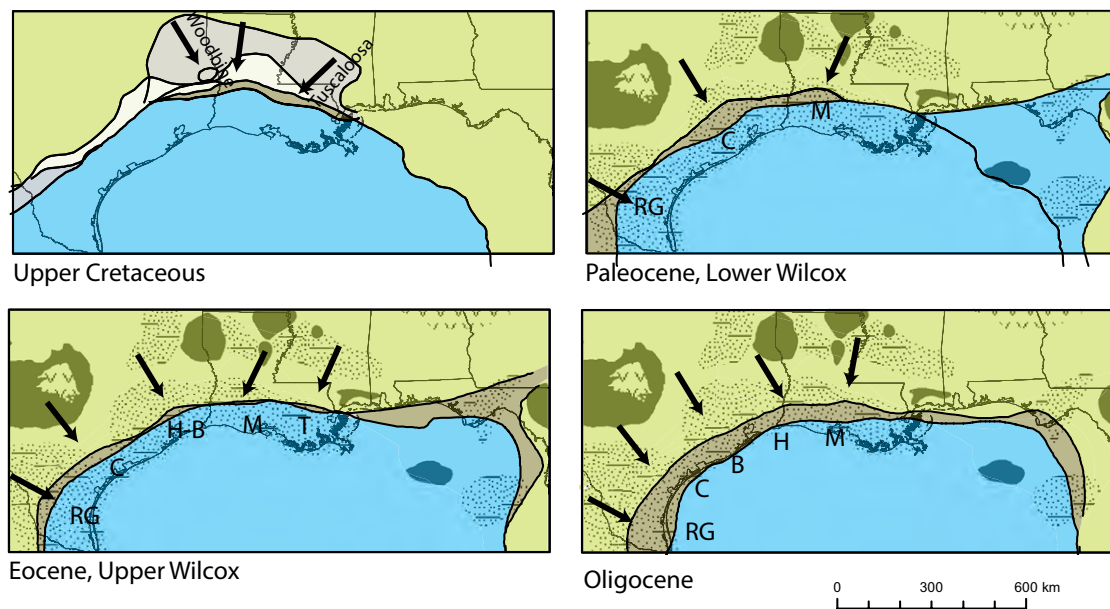


Figure 2. Fluvial axes (arrows) for the northern Gulf of Mexico from the Upper Cretaceous to Oligocene. Dark-green inland areas mark persistent uplifts and arches; gray area indicates subsiding region during late Cretaceous; beige area indicates Jurassic to lower Cretaceous shelf progradation; brown area indicates shelf progradation; stipple pattern indicates basins; blue area indicates offshore. Modified from compilations of Galloway (2001), Galloway (2005), Galloway (2008), and Galloway et al. (2011). RG—Rio Grande paleo-fluvial axis; C—Colorado paleo-fluvial axis; M—Mississippi paleo-fluvial axis; H-B—Houston-Brazos paleo-fluvial axis; H—Houston paleo-fluvial axis; B—Brazos paleo-fluvial axis; T—Tennessee paleo-fluvial axis.

(TR) cycles of terrigenous offlapping wedges (Claudet, 1950; Stearns, 1957; Martin, 1978; Mitchum and Van Wagoner, 1991; Mancini and Puckett, 2005) (Fig. 4) and have placed them into a sequence stratigraphic framework. The progradational parts of the packages are prone to preserve the target fluvial facies (e.g., Baum and Vail, 1988; Galloway et al., 2000; Mancini et al., 2008). This study utilizes this preexisting stratigraphic framework to recognize and extract metrics from the fluvial channel belts preserved within the terrigenous offlapping wedges (TR cycles). Furthermore, the results of this study provide an independent test of preexisting maps delineating North American Cenozoic drainage-basin evolution (Galloway, 2005; Galloway et al., 2011).

In addition to empirical scaling relationships to derive drainage-basin size, recent studies have utilized geochronological tools including detrital zircon to test the provenance and drainage-basin configuration for the northern Gulf of Mexico basin during the Late Cretaceous to Eocene (Mackey et al., 2012; Blum and Pecha, 2014; Blum et al., 2017; Wahl et al., 2016). Their findings provide alternatives and/or modifications to the paleodrainage configurations as outlined by Galloway et al. (2011). Geochronological tools such as detrital zircon provide a direct means to locate the source of sediment (provenance) and up-dip extent for a drainage basin.

This study builds on an established regional stratigraphic framework for the northern Gulf of Mexico derived from well logs and seismic data that, in conjunction with biostratigraphic zonation, provide chronostratigraphic controls (Galloway, 2008; Mancini et al., 2008).

METHODS

This study is grounded on recognition and measurement of channel-related sand bodies of fluvial origin in subsurface data. For the purposes of this paper, we use the term “point bar” to represent a morphological feature in rivers that develops on concave banks, and accumulates sand primarily by lateral accretion. Following Blum et al. (2013, and references therein), we use the term “channel belt” to define the area over which a channel has migrated during a specific interval of time, and the term “channel-belt sand body” represents the deposit that forms from that lateral migration. Most channel belts are active over a few thousands of years (not tens or hundreds of thousands): Additionally, low-gradient coastal-plain rivers typical of passive-margin settings like the Gulf of Mexico consist of channel-belts that are constructed by a continuum of highly migratory to non-migratory channels. Highly migratory channels construct multiple point bars that are laterally amalgamated with channel-belt widths being 7–30 times the active channel width; whereas non-migratory channels construct a single narrow point bar that has migrated only 2–5 times the channel width (Fig. 5). Blum et al. (2013) and Fernandes et al. (2016) showed that these end members characterize positions that are above and below the backwater limits respectively, where lateral migration rates decrease, aggradation and avulsion become common, and the river channel system becomes distributive in the backwater zone. The net result is that channel-belt width-to-thickness (W:T) ratios decrease

SPONSORS

CHARGER EXPLORATION

Michael L. Jones
President/Geologist

Onshore Gulf Coast Prospect Generation and Consulting

1001 McKinney Street, Suite 801 Houston, TX 77002
Ofc: 713.654.0080 Cell: 713.398.3091
Email: mjones@chargerexploration.com
www.chargerexploration.com

**That old gas kick could be
your next discovery!**

Characterization of Unconventional Reservoirs

Traditional methods of core analysis cannot yield acceptable results when applied to unconventional reservoirs such as gas shales, tight gas sands, coals and thin bed formations.

Production controls on these reservoirs are not limited to hydrocarbons in place, permeability and porosity. Pay Identification requires an understanding of complex lithologies and exotic mineralogies.

Only Core Lab offers the comprehensive range of unique technologies required to optimize your unconventional reservoirs.

Geological Petrophysical Geomechanical Geochemical



To learn more about our unique unconventional reservoir evaluation services contact Core Lab. (713) 328-2121 or (361) 289-5457 psinfo@corelab.com

© 2005 Core Laboratories. All rights reserved.

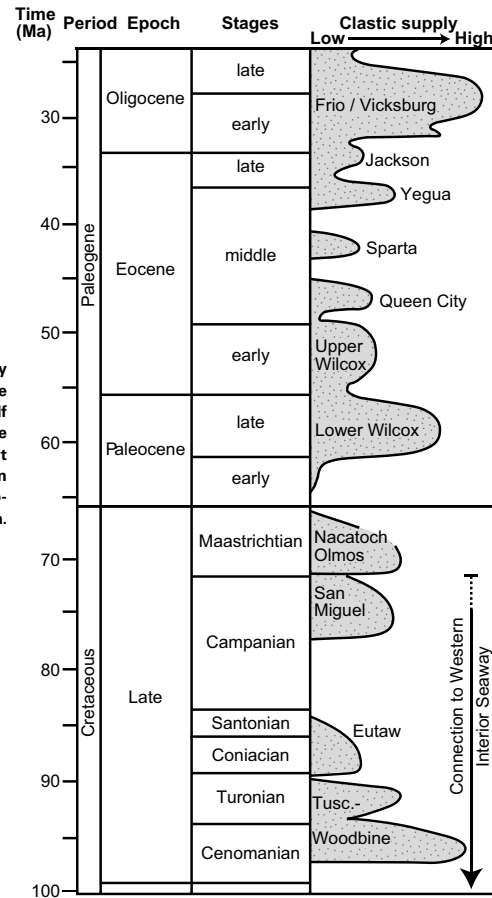
Well-log identification of channel belts

As described in classic works by Allen (1978), Bernard et al. (1970), Jackson (1976, 1977) and summarized by Bridge (2003), fluvial channel belts and abandoned channels have typical blocky to fining upward lithologic patterns (Collinson, 1978). The shape of the lithological variation translates roughly to shape of well logs such as, gamma ray, resistivity, and SP (Fig 1). The shape of the well log can be used as an indicator of depositional environment and sandstone body type. Wireline log shapes are often described as funnel- 'upward coarsening', bell- 'upward fining', cylinder- 'blocky' and further described as smooth or serrated (Cant 1984; Snedden 1984, Scheibling and Atkinson 1992; Bridge and Tye, 2000). However, log shape in gamma ray or SP (spontaneous potential) in siliclastic rocks is related more to argillaceous content than to grain size. The coarser-grained material at the base typically exhibits low gamma ray, and an excursion in the SP and resistivity (direction varies depending upon salinity and fluid content of pore waters) grading into or overlain by finer-grained material (commonly containing increase argillaceous content) exhibiting slightly higher gamma ray or less excursion in the SP/Resistivity curves and producing the 'blocky' or 'bell' shaped curve as illustrated in the SP wireline log curves of Figure 1.

For example, in the modern Brazos river, several boreholes were drilled through a meander bend and logged with SP tool (Bernard et al 1970). These curves illustrate the 'fining upward' as well as serrated blocky wireline shapes observed in fluvial channel belt deposits. Additionally, the channel belt wireline log signature can be compared to a typical abandoned channel wireline log signature. The abandoned channel wireline log signature typically contains a blocky to serrated pattern at the base that is sharply overlain by serrated low SP or Gamma Ray. The blocky to serrated pattern at the base indicates coarser-grained flood scour deposits overlain by finer-grained abandoned channel fill which is typically muddy (Fig. 2). The channel-belt sandbodies (commonly described as point bars in the literature) are the fundamental building block of coarse-grained fluvial deposits in modern systems as well as the stratigraphic record (e.g. Karges 1962; Berg and Cook 1968; Fisher and McGowen 1969).

¹Supplemental Files. Text, 11 figures, Quaternary database, and Gulf of Mexico channel-belt measurement database. Please visit <http://doi.org/10.1130/GES01374.S1> or the full-text article on www.gsapubs.org to view the Supplemental Files.

Figure 3. Stratigraphy and chronology of Upper Cretaceous to Oligocene clastic deposits in the northern Gulf of Mexico basin. Clastic supply is the relative amount of clastic sediment delivered to the margin. Formation names of the clastic sediment supply also indicated. Tusc. – Tuscaloosa. Modified from Galloway (2008).



substantially downstream through the backwater transition, from 70:1–300:1 or more to 20:1–50:1.

Most channel-related fluvial sand bodies are deposited as a series of bars by lateral accretion, and produce a general fining-upwards pattern of grain size and thinning of bed sets. Early studies of modern Gulf of Mexico point bars and valley fills by Bernard et al. (1970) and Coleman and Prior (1982) established recognition criteria for fluvial channel-belt sand bodies from well logs. Bridge (1993; see also Bridge, 2003; Bridge and Lunt, 2006) showed that, within this general template, multiple log patterns can result, depending on upstream versus downstream position within the bar itself (Fig. 6). Heterolithic bar-top facies form at elevations up to bankfull stage, but likewise vary in terms of grain size, and, when muddy, can be difficult to differentiate from near-channel overbank facies. Regardless, vertical variation in grain size

translates to vertical patterns that are identifiable in gamma ray, resistivity, and Spontaneous Potential well logs (Fig. 6), which are commonly used to interpret and correlate sedimentary deposits in the subsurface. Hence, well-log shape can be used to identify channel-belt sand bodies in subsurface data: as noted by Bridge and Tye (2000), no single well log can be representative, but sand-body thicknesses measured from multiple well logs are a proxy for bankfull depth.

Blum et al. (2013) presented a series of scaling relationships for modern river systems that represents an earlier generation of the data used here, and which is included in the Supplemental Data¹. The morphometrics of 279 modern channel belts were collected from studies of more than 60 rivers that span drainage basin sizes from 120 km² to 3,000,000+ km², in climatic conditions ranging from tropical to periglacial (Blum et al., 2013; Supplemental Data [footnote 1]). The planform measurements of a meander involved digitization of a georeferenced point-bar deposit and associated channel using Google Earth (open-platform software, <https://www.google.com/earth/desktop/>). The channel represents the abandoned channel, and is likely filled with finer-grained sediment, whereas the point bar or meander refers to the compound bar or storey composed of coarser-grained sediment. The digitized polygons were transferred to ESRI ArcGIS software (<http://www.esri.com/arcgis/about-arcgis>) with an equal area projection. ArcMap was used to calculate the area (in m²). The perimeter of the channel (or abandoned channel) was divided by two to get an approximate length (in m) of the channel, which provided a consistent, reproducible method if not exactly accurate. The average width of the channel or abandoned channel was computed by dividing the calculated area (in m²) by the length (in m). A minimum rectangular bounding container was used to extract the long and short axes of the point bar. Visual inspection was used to differentiate whether the long or short axis was the expansion length. The amplitude length was used as a proxy for a minimum meander-belt or channel-belt width. The half-wavelength measurement was extracted along the downstream direction of the meander. Measured parameters are illustrated in a schematic diagram in Figure 7. Holocene channel-belt deposits are readily linked via stream gauge measurements to channel-forming discharge. Only rivers that have been sufficiently studied to supply reliable bankfull depth and complete point-bar measurements from either lithological descriptions or stream cross sections were included.

Most important here would be power-law relationships between drainage area and bankfull discharge (see also Davidson and North, 2009), and between bankfull discharge and sand-body thickness: these two relationships can be combined to give a relationship between drainage area and sand-body thickness (Fig. 8A; Supplemental Data [footnote 1]). We treat these as first-order relationships, and a number of uncertainties must be kept in mind. First, there is inherent variation within a single river system due to variation in flow depth: at the local scale, variation in depth occurs within single meander bends, whereas regionally, downstream increases in flow depth occur from tributary inputs and/or flow dynamics within the backwater reach (Fig. 8B). Based on the modern and Holocene Mississippi River, variations in channel depth of

JOIN!



The Desk & Derrick Club of Corpus Christi is a dynamic organization that promotes the education of the petroleum, energy and allied industries and advances the professional

Member Benefits:

- Learn from energy industry experts.
- Network with energy industry leaders and colleagues.
- Attend regional and national meetings.
- Receive critical updates and information about the energy industry.
- Enhance communication and leadership skills.
- Make friends for life!

For more information about the Desk & Derrick Club of Corpus Christi and to learn about member eligibility, go to www.addc.org or contact Jena Nelson at 361-844-6726 or email at jena@amshore.com

The Desk & Derrick Club of Corpus Christi is a proud affiliate of the Association of Desk And Derrick Clubs, www.addc.org

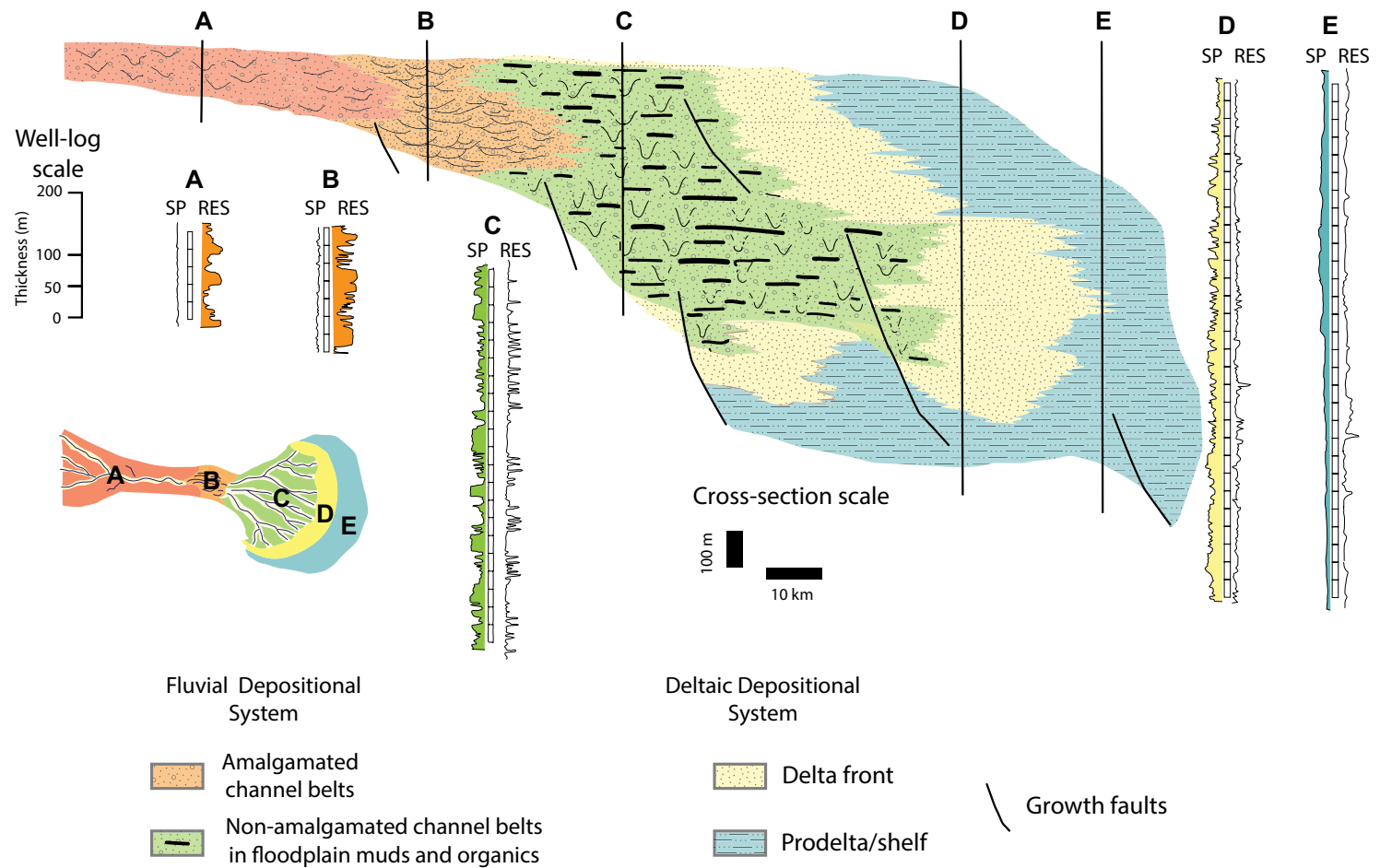


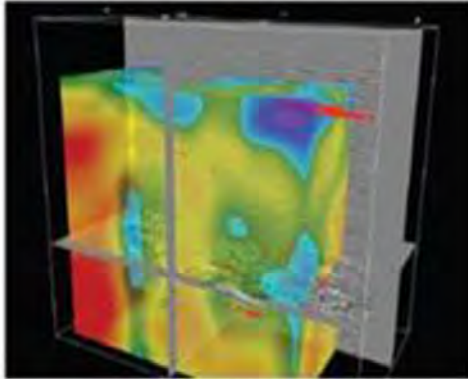
Figure 4. Example transgressive-regressive cycle facies and well-log signature, showing updip to downdip facies variation from amalgamated fluvial at A and B to non-amalgamated fluvial at C to deltaic and shallow-marine strata at D and E. Modified from Fisher and McGowen (1969). SP—spontaneous potential, RES—resistivity well logs.

this kind are less than a factor of two (see also Bridge and Tye, 2000). Second, variations in bankfull discharge and depth occur between river systems due to differences in climate regimes: holding drainage area constant, river systems in humid or highly seasonal monsoonal climates will have larger bankfull discharge values than river systems in cold and/or dry climates (see Plink-Björklund, 2015). However, data from modern systems show that variations of this kind result in bankfull depths from individual river systems that are within a factor of two of the regressed values for drainage basin areas within the population as a whole (Fig. 9).

We have examined 1879 well logs from the Gulf Basin Depositional Synthesis (GBDS) Program database at the Institute of Geophysics of The University of Texas at Austin. We focus on fluvial and coastal-plain stratigraphic intervals in the Cenomanian Tuscaloosa-Woodbine, Paleocene to early Eocene Wilcox, Eocene Queen City and Yegua, and Oligocene Vicksburg-Frio depositional episodes (Galloway, 2008; Galloway et al., 2011). From these well logs, we have compiled 986 measurements of channel-belt thickness from 248 well logs for these stratigraphic units across the Gulf of Mexico coastal plain, in an area stretching from south Texas to southern Mississippi. We focus on intervals that

SEIMAXSM
TECHNOLOGIES

Innovative Seismic
Processing Solutions



**2D and 3D Land and Marine
Pre-Stack Time and Depth Imaging**

**Pre- and Post-Stack Attributes
for Amplitude, Frequency and
Resolution**

**4805 Westway Park Blvd. Houston, TX 77041
p: 832.554.4301 www.seimaxtech.com**

(SINCE 1983)



**P.O. Box 741
Rockport, TX 78381
361-729-1241
www.belaireenv.com**

Environmental Permitting, Surveying & Other Services including:

**Dredging • Residential & Commercial Development
Shoreline Stabilization • Bulkheads • Piers & Docks
Wetland Delineations
Seagrass, Oyster Reef and Bathymetry/Topographic Surveys
Mitigation Planning and Long-Term Management
Habitat Restoration and Enhancement**

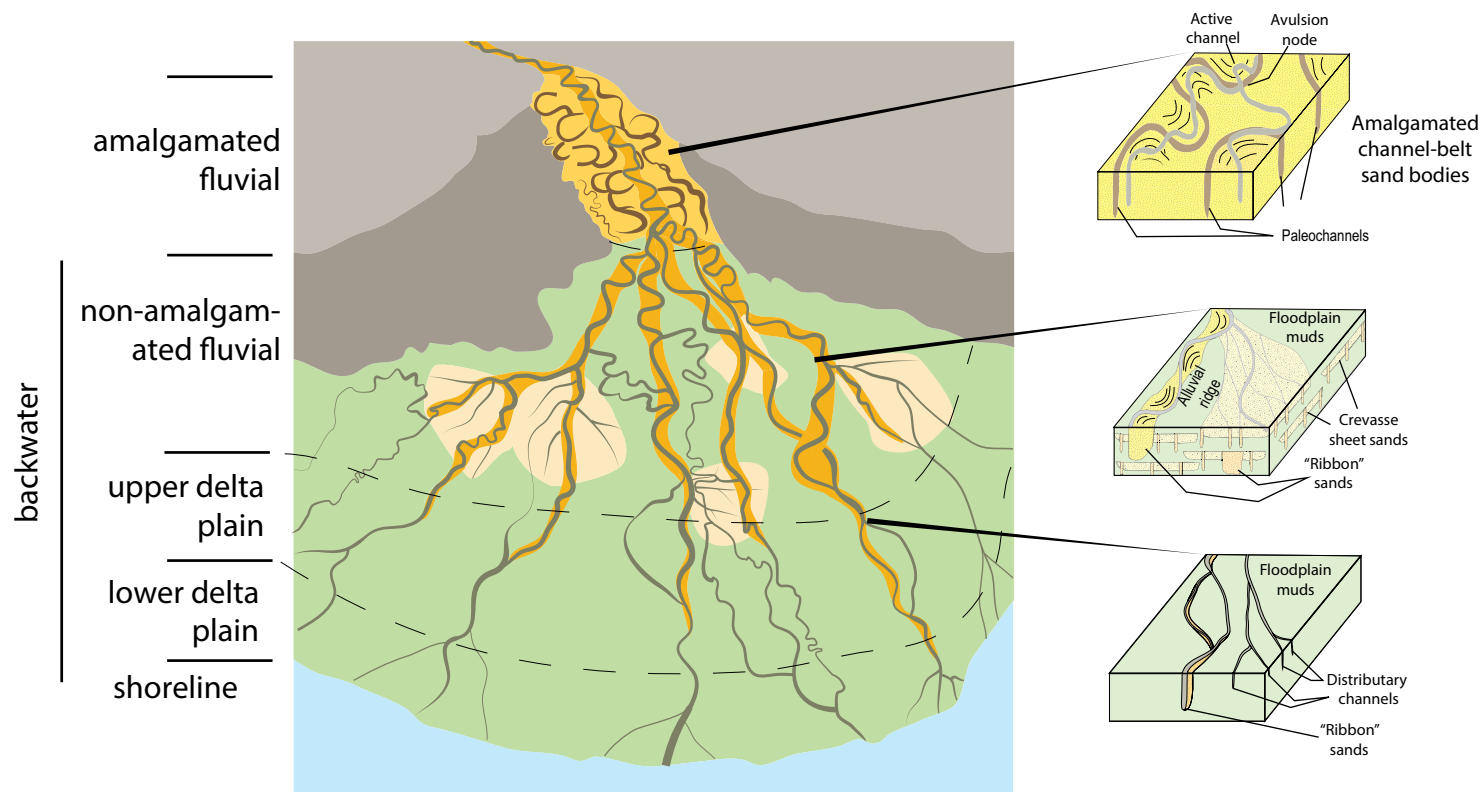


Figure 5. Generalized schematic to illustrate the typical channel-belt styles within the backwater zone. The backwater zone consists of non-amalgamated ribbon-like sand bodies or channel belts and associated crevasse splay deposits that transition downdip to low-gradient anastomosing channel belts and distributary channels. The backwater zone of fluvial sedimentation is composed of channel belts encased in floodplain muds and is typically associated with high subsidence and greater preservation potential. Modified from Blum and Törnqvist (2000).

contain channel-belt sand bodies but are otherwise dominated by floodplain mudrocks and organic-rich facies (Fig. 5; Supplemental Data [footnote 1]), which we interpret to represent distributive channel belts that formed within the backwater reach. Figure 10 illustrates this approach with well logs from the Cenomanian Woodbine Group in east Texas (Ambrose et al., 2009) and the Paleocene Wilcox Group in central Louisiana (Tye et al., 1991). Uncertainties in measurements are likely due to difficulties in recognition of channel-belt sand-body boundaries within an individual well log. In some cases, this may reflect muddy upper-bar facies that make identification of the upper limits difficult, resulting in underestimation of bankfull depth. In other cases, individual channel-belt sand bodies may stack on top of each other and be impossible to differentiate, resulting in overestimation of bankfull depth.

We bin well-log measurements by stratigraphic unit and geographic area, and follow conventions in Galloway et al. (2011) and Blum et al. (2017), where

ancient fluvial axes are named for extant river systems in the area today. For each paleo-fluvial axis and stratigraphic interval, measured channel-belt sand bodies are compiled into probability density functions (PDFs) and cumulative-frequency curves to show thickness distributions; the number of measurements per stratigraphic unit per fluvial axis ranges from $n = 10$ to $n = 143$ (Figs. 11 and 12). Even with uncertainties from natural variability and measurement issues, sand-body thickness populations vary significantly and systematically. For example, statistical analysis involving t -tests of two samples assuming unequal variances on Cenomanian versus lower Wilcox channel-belt deposits for the paleo-Tennessee River and paleo-Mississippi River fluvial axes shows statistically significant differences in sand-body thickness populations.

Using a best-fit equation between modern sand-body thickness and contributing drainage-basin area, we estimate a range of contributing drainage



Austin Office:

1717 W. 6th Street, Ste 230

Austin, Texas 78703

512.457.8711

Contact: Bill Walker, Jr.

bwalker@stalkerenergy.com

Houston Office:

2001 Kirby Drive, Suite 950

Houston, Texas 77019

713.522.2733

Contact: Todd Sinex

tsinex@stalkerenergy.com

www.stalkerenergy.com

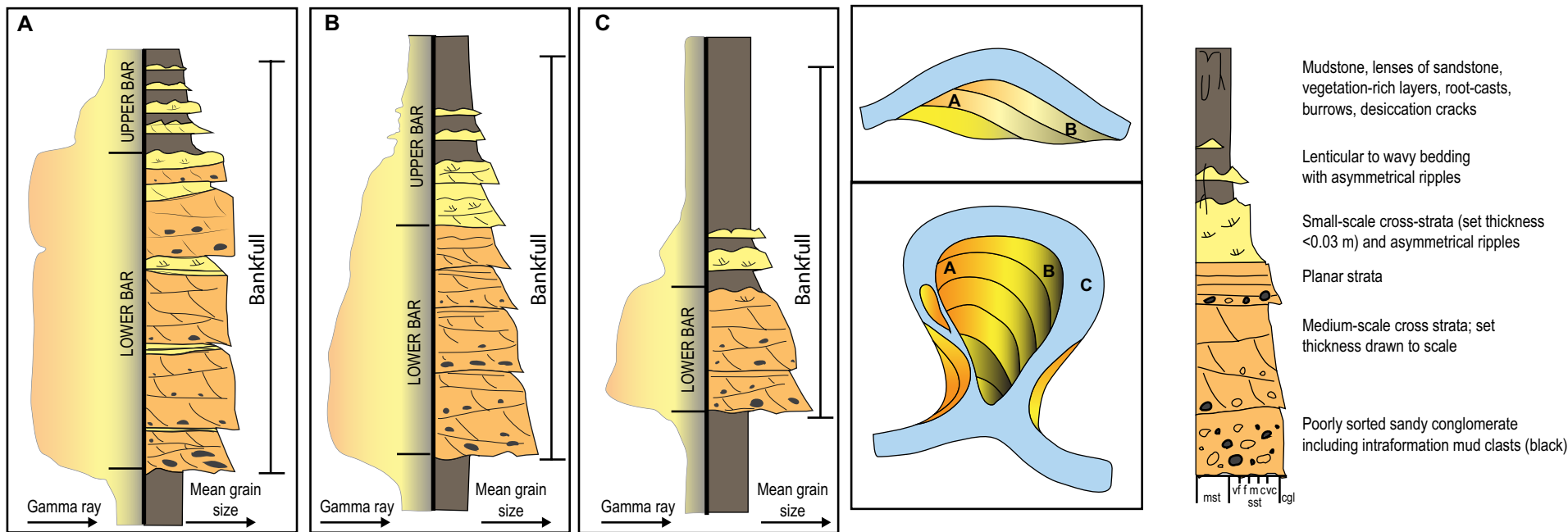


Figure 6. Channel belt map-view diagrams illustrating (1) relatively coarse- versus fine-grain deposition as well as ideal vertical log pattern deposition and (2) general map-view location of ideal vertical log pattern. Grain-size abbreviations: mst—mudstone, sst—sandstone, vf—very fine, f—fine, m—medium, c—coarse, vc—very coarse, cgl—conglomerate.

areas for ancient systems from PDF peaks and the P90 value in cumulative frequency curves. The P90 value is the 90% statistical confidence that the channel-belt measurements have captured the thickness of the representative channel and drainage basin. Although we measured sand bodies in the Eocene Queen City and Yegua intervals, we focus here on the Cenomanian Tuscaloosa-Woodbine, the Paleocene–early Eocene Wilcox, and the Oligocene Vicksburg-Frio episodes. All data are included in the Supplemental Files (footnote 1).

APPLICATION TO CENOMANIAN AND PALEOCENE GULF OF MEXICO SYSTEMS

For each paleo-fluvial axis and interval, the measured channel belts are visualized as PDFs in order to understand the thickness populations that compose that particular fluvial system ($n = 10$ to $n = 143$; Fig. 12). Analysis of fluvial channel-belt thickness through time and space shows significant thickness variations. Natural thickness variations in a population of channel belts representing one fluvial axis can be explained as (1) variability in the basal erosion surface, which can account for up to twice mean bankfull thickness

(Leopold et al., 1962; Willis, 1989; Salter, 1993; Willis and Tang, 2010; Supplemental Files [footnote 1]), and (2) variable-size fluvial systems residing within a fluvial axis during a stratigraphic interval (Supplemental Data [footnote 1]). Therefore, many channel-belt thickness measurements are required to characterize the fluvial system(s). Significant fluvial system preservation correlates with mapped shelf progradation. For example, during the lower Wilcox deposide, measurable fluvial channel belts correlate with significant shelf-margin progradation in the fluvial axes (Fig. 11). Fluvial channel belts and/or alluvial deposition are not readily recognized in other areas of the northern Gulf of Mexico basin during this time and are not recognized as fluvial axes (Galloway et al., 2000; Galloway, 2008). Similar correlations are illustrated for the upper Wilcox and the Oligocene (Fig. 11).

Cenomanian Tuscaloosa-Woodbine

The Upper Cretaceous Cenomanian interval includes the Woodbine Group of the East Texas Basin and North Louisiana Salt Basin, and the Tuscaloosa Formation of the Mississippi Salt Basin. Cenomanian channel-belt thicknesses in the East Texas Basin paleo-Colorado River fluvial system ($n = 23$) range

SPONSORS



VirTex Operating Company, Inc.

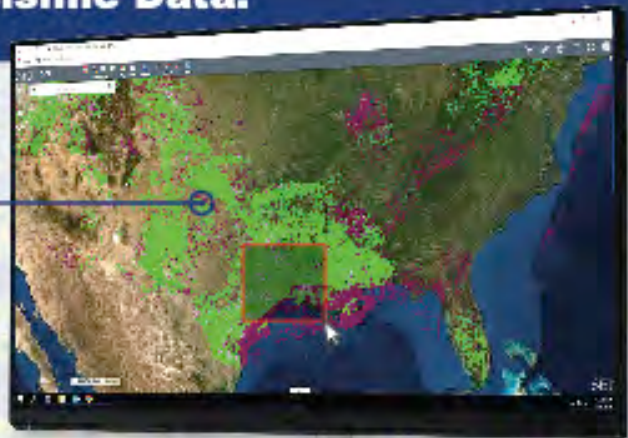
615 North Upper Broadway, Suite 525, Corpus Christi, Texas 78477
(361) 882-3046

The Upstream Oil And Gas Industry's Premiere Resource For Onshore And Offshore Seismic Data.

Explore our expansive North American 2D and 3D seismic library using an interactive GIS interface

WWW.SEISMICEXCHANGE.COM

Corporate Marketing Contact:
Max Cunningham
mcunningham@seismicexchange.com

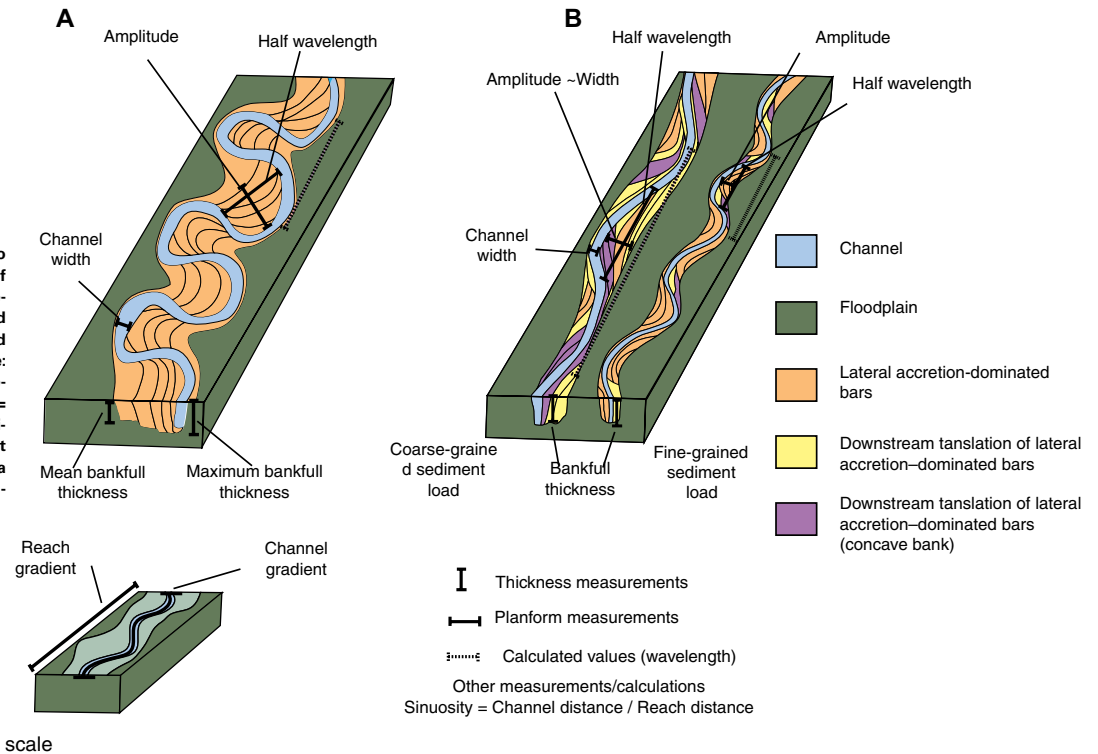


SEI® SEISMIC EXCHANGE

4805 Westway Park Blvd., Houston, TX 77041 • 832-590-5100
New Orleans | Houston | Dallas | Denver | Tulsa | Canada

45
years
1973-2018

Figure 7. Schematic block diagrams to illustrate measurement methodology of various channel-belt styles. (A) Measurements in amalgamated channel belts and (B) measurements in non-amalgamated channel belts. Key measurements include: Channel-belt (point-bar) width, half wavelength ($\times 2 =$ wavelength), amplitude ($\times 2 =$ channel-belt width), and mean and maximum bankfull thickness. Channel-belt morphometric, discharge, and climate data are provided in the supplemental information [footnote 1].



from 9 to 24 with a peak at 15 m (Fig. 12). Channel-belt thicknesses in the North Louisiana Salt Basin paleo-Mississippi fluvial system ($n = 19$) show a distinctive peak at 6 m. The Cenomanian strata (Tuscaloosa) in the Mississippi Salt Basin paleo-Tennessee fluvial system ($n = 53$) exhibit channel-belt thicknesses that range from 6 to 24 m with a major peak at 14 m and a minor peak at 18 m.

Early–Middle Paleocene Lower Wilcox

The Paleocene lower Wilcox interval contains significant fluvial axes in the paleo–Rio Grande, paleo–Colorado, paleo–Mississippi, and paleo–Tennessee systems ($n = 42$, $n = 108$, $n = 143$, $n = 47$, respectively; Fig. 12). The majority of the paleo–Rio Grande channel-belt thicknesses range from 9 to 33 m with PDF peaks at 15, 24, and 33 m (Fig. 12). Out of 42 interpreted channel belts, four were between 33 and 36 m thickness and represent another population peak. The paleo–Colorado channel-belt thicknesses range from 9 to 48 m with three prominent PDF peaks at 24, 29, and 36 m. The 29 m peak contains a coarse tail which tapers off at 42 m. The paleo–Mississippi fluvial axis contains a channel-

belt thickness population ($n = 143$) with a P90 of 26 m and PDF peaks at 15, 23, and 33 m. The 15 m PDF peak was generated from channel belts situated between the Monroe uplift and the LaSalle Arch.

Late Paleocene–Early Eocene Upper Wilcox

The Eocene upper Wilcox fluvial axes occur in the paleo–Rio Grande, paleo–Colorado, paleo–Houston–Brazos, paleo–Mississippi, and paleo–Tennessee systems (Fig. 12). The South Texas paleo–Rio Grande channel-belt thickness population ($n = 31$) averages 21 m with dominant peaks at 18 m and 24 m and a lesser peak at 33 m (Fig. 12). The upper Wilcox paleo–Colorado channel-belt thickness population ($n = 15$) averages 24 m with prominent peaks at 12 m, 24 m, and 30 m and a coarse tail at 38 m. The upper Wilcox paleo–Houston–Brazos channel-belt thickness population ($n = 10$) shows three peaks at 12 m, 18 m, and 33 m. The upper Wilcox paleo–Mississippi channel-belt thickness population ($n = 41$) averages 23 m with peaks at 15 m, 21 m, 36 m, and 51 m. The upper Wilcox paleo–Tennessee channel-belt thickness population ($n = 11$) shows a peak at 16 m.



SABALO ENERGY

SABALO ENERGY | P.O. BOX 2907 | CORPUS CHRISTI, TX 78403 | 361.888.7708 | SABALOENERGY.COM

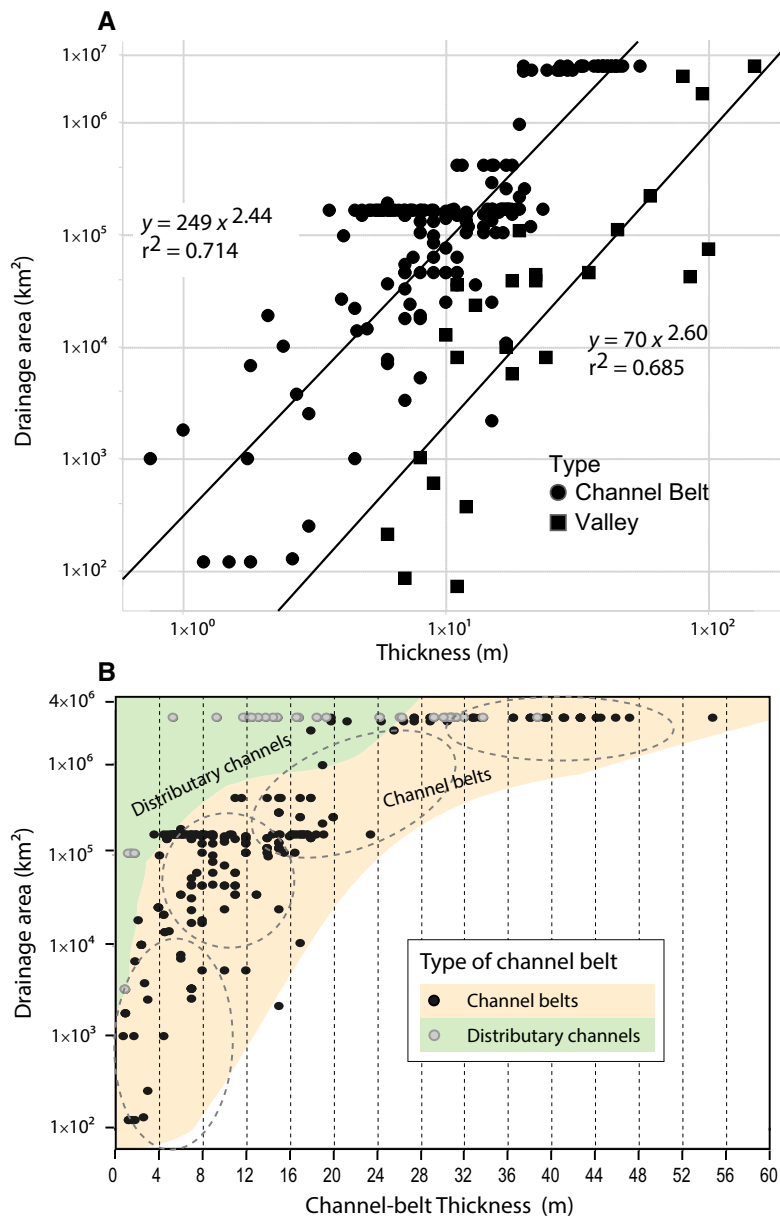


Figure 8. Quaternary channel-belt and valley thickness versus drainage basin area. (A) Log-log plot of thickness versus drainage area of channel belts and valleys. (B) Linear-log plot of channel-belt thickness versus drainage area that distinguishes distributary channels from channel belts. Modified from Blum et al. (2013).

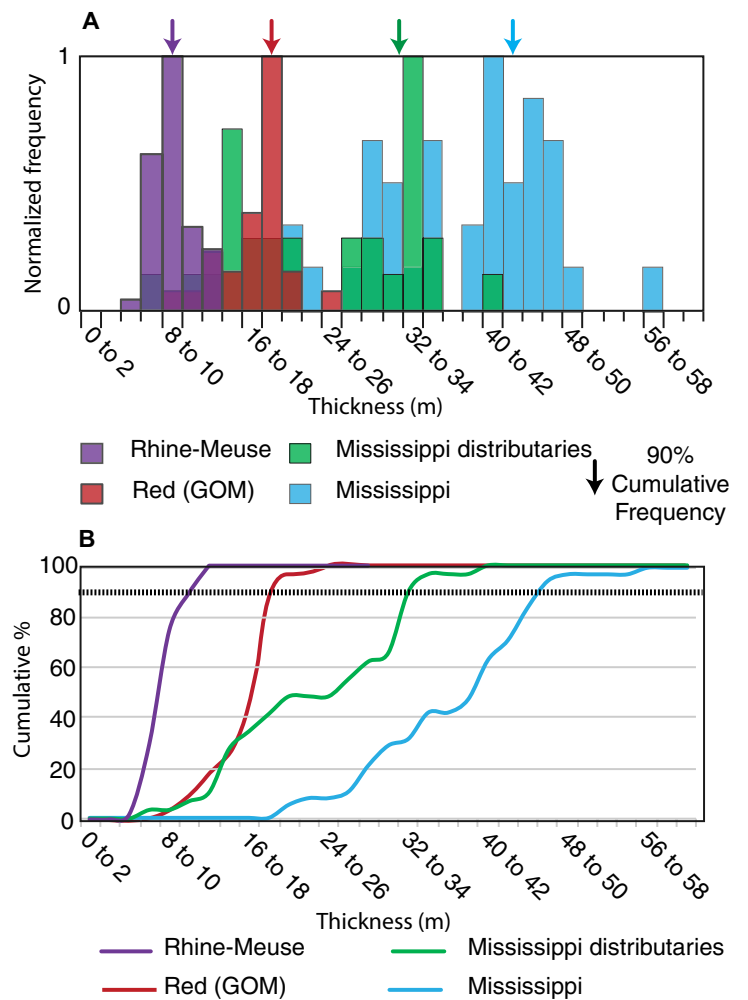


Figure 9. Probability density function and cumulative frequency plot of channel-belt thickness data for Rhine-Meuse (Netherlands), Red (Gulf of Mexico [GOM]), and Mississippi (GOM) fluvial systems. The Mississippi data were divided into two subsets, distributary channels and trunk-system channel belts.

Oligocene Vicksburg-Frio

The Oligocene Frio Formation fluvial axes can be documented in the paleo-Rio Grande, paleo-Colorado, paleo-Houston-Brazos, and paleo-Mississippi systems (Fig. 12). The paleo-Rio Grande channel-belt thickness population ($n = 54$) has a P80 of 24 m and prominent peaks at 15 m, 24 m, and 30 m (Fig. 12).

sponsors



Winn Exploration Co., Inc.

Actively Seeking High Quality
Drilling Prospects

Contacts:

Mike Layman (Geophysicist)	361-844-6922
Tom Winn (Geologist)	361-844-6992
Southern Winn (Geologist)	361-844-6998

800 North Shoreline Blvd.
19th Floor, North Tower
Corpus Christi, Texas 78401

Office: 361-844-6900 Fax: 361-844-6901

SUEMAUR

Experience. Expertise. Exploration.

EXPLORING SINCE 1968



539 N Carancahua St, Suite 1100, Corpus Christi, TX 78401

(361) 884-8824

www.suemaaur.com

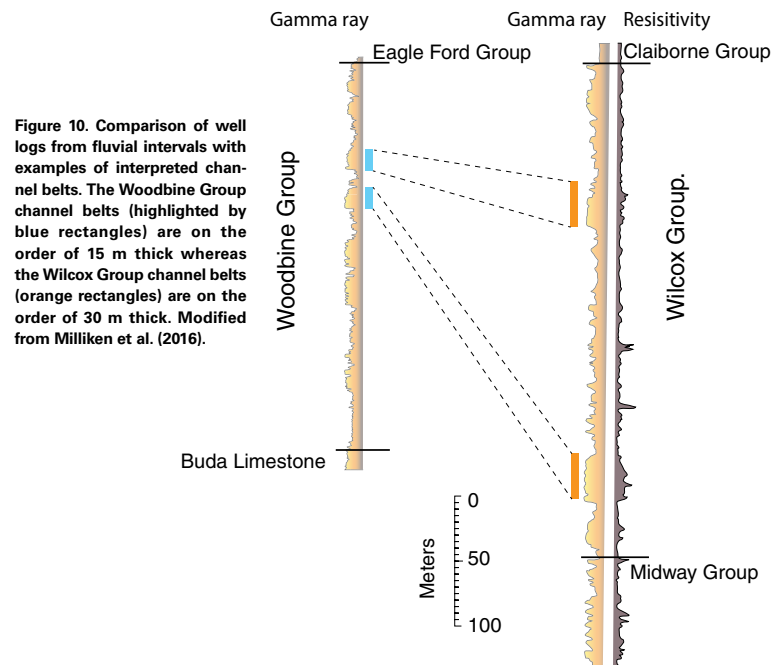


Figure 10. Comparison of well logs from fluvial intervals with examples of interpreted channel belts. The Woodbine Group channel belts (highlighted by blue rectangles) are on the order of 15 m thick whereas the Wilcox Group channel belts (orange rectangles) are on the order of 30 m thick. Modified from Milliken et al. (2016).

The paleo-Colorado channel-belt thickness population ($n = 45$) averages 24 m with dominant PDF peaks at 15 m, 21 m, and 36 m, and a less-prominent peak at 52 m. The paleo-Houston-Brazos channel-belt thickness population ($n = 26$) averages 17 m with dominant peaks at 12 m and 18 m and less-prominent peaks at 27 m, 39 m, and 45 m. The paleo-Mississippi channel-belt thickness population ($n = 135$) averages 24 m with dominant peaks at 15 m and 21 m and a less-prominent peak at 35 m.

Changes in Fluvial Systems through Time and Space

Comparison amongst fluvial systems illustrates differences in fluvial channel-belt thickness. Application of analog modern fluvial-system thickness–drainage basin size correlations suggests that thickness of channel belts in ancient systems should also scale to paleo–drainage basin size. Cenomanian fluvial systems have significantly thinner channel belts as compared to Paleocene paleo-Colorado and paleo-Mississippi lower Wilcox fluvial systems (Fig. 13A).

The P90 channel thickness of the fluvial systems of the lower Wilcox (Paleocene) to upper Wilcox (early Eocene) increase in the paleo-Mississippi fluvial axis, but appear stable in the paleo–Rio Grande and the paleo-Colorado axes. The paleo-Houston-Brazos fluvial system, while prominent during

the Paleocene, is not a significant fluvial axis during the early Eocene (upper Wilcox) (Fig. 13B).

The Oligocene paleo-Colorado fluvial system contains slightly thicker channel belts as compared to the lower Wilcox paleo-Colorado. The paleo–Rio Grande fluvial system contains comparable fluvial channel belts in the Oligocene as compared to the Paleocene. The Oligocene paleo-Mississippi fluvial system exhibits thicker P90 channel belts than the lower Wilcox (Paleocene) paleo-Mississippi (Fig. 13C).

A particular paleo-fluvial system can also be temporally analyzed using this methodology. For example, the paleo–Rio Grande fluvial system is relatively small during the Paleocene, but systematically grows in discharge and fluvial channel-belt thickness through the Eocene and is relatively small again in the Oligocene (Fig. 13D).

DISCUSSION

Probability Density Function Interpretation

As outlined in the methodology, care was taken to identify intervals and regions of the progradational clastic wedge packages where fluvial channel belts encased in floodplain muds were likely to have been deposited and preserved, in order to minimize thickness overestimation due to vertical channel-belt amalgamation or underestimation due to partial preservation. Many channel-belt measurements were also made to produce a population of channel-belt thickness for a given interval and region in order to encompass the potential range of thickness inherent in a fluvial system. Channel-belt measurements typically cluster into modes that translate into peaks in a population PDF. The thickness difference within a mode typically varies by a factor of two and may illustrate a channel-belt population's inherent thickness variation due to lateral migration. (For discussion on inherent thickness variation within a channel belt, see the supplemental information [footnote 1].)

For each paleo-fluvial axis, the population of thickness measurements exhibited one to five PDF peaks (Fig. 12). Multiple PDF peaks could be due to multiple, various-size fluvial systems feeding sediment into an area and/or interval. Multiple PDF peaks for a paleo-fluvial axis may also indicate measurement of a population of channel belts and distributary channels. Because channel-belt thickness is largely controlled by bankfull discharge within the fluvial channel, factors that affect the water discharge of a drainage basin will affect the channel-belt thickness. For example, in small (<100,000 km²) drainage basins, the channel belts deposited by fluvial systems draining humid climatic regimes are thicker (by a factor of about two) than channel belts deposited by fluvial systems draining arid climates (supplemental information [footnote 1]). Once a drainage basin increases in size to very large to continental scale, the climate influence on channel-belt thickness may not be as important due to (1) the likelihood of very large drainage basins traversing multiple climatic zones and (2) significant discharge.

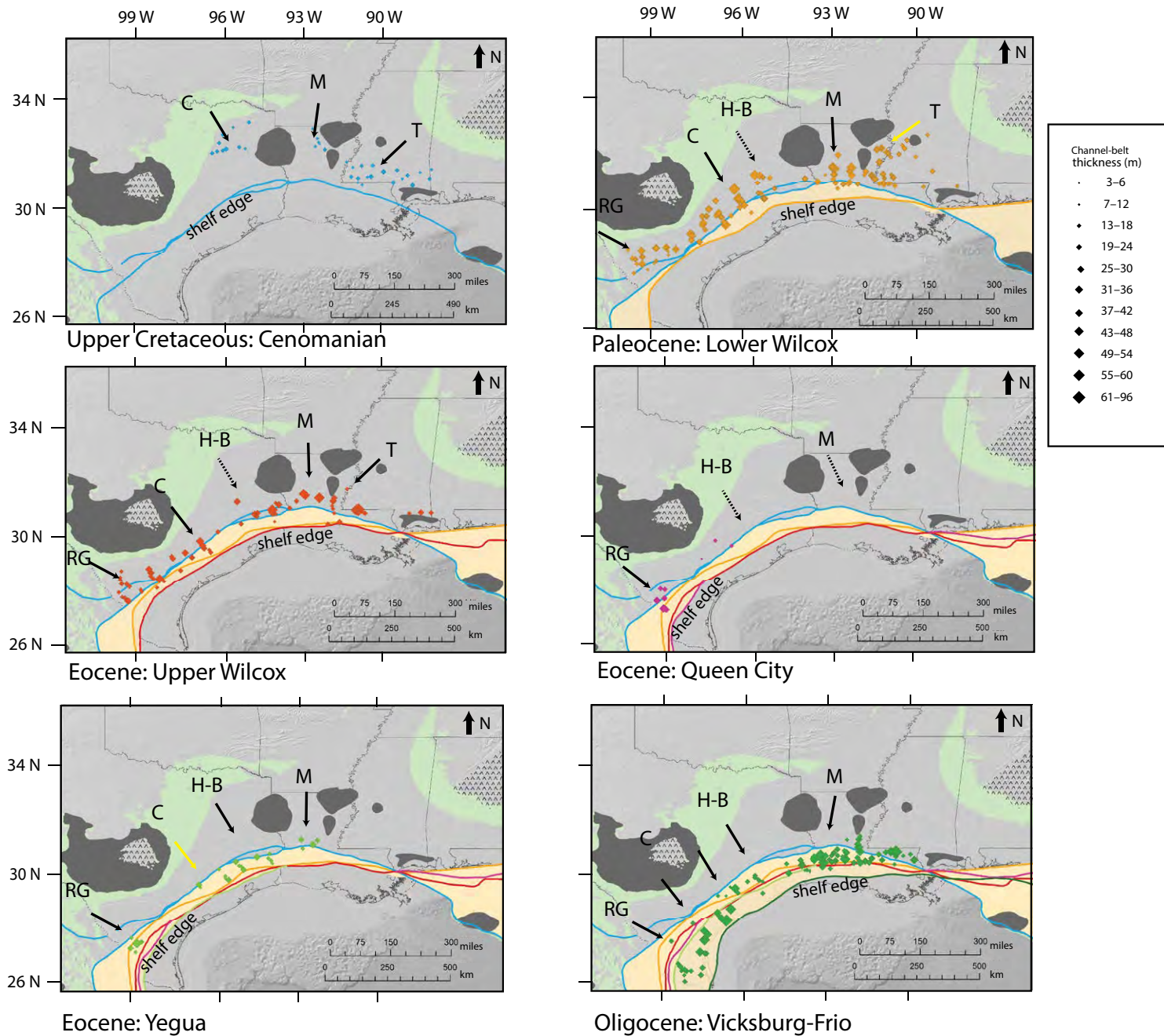


Figure 11. Channel-belt thickness measurements extracted from well logs associated with fluvial axes through time as defined by Galloway (2005). T—paleo-Tennessee; M—paleo-Mississippi; H-B—paleo-Houston-Brazos; C—paleo-Colorado; RG—paleo-Rio Grande. Solid black arrows denote the fluvial axes of Galloway (2005) that are also recognized in our data set. Dashed black arrows denote fluvial axes described by Galloway (2005), but not observed in our data. Yellow arrows denote fluvial axes not recognized by Galloway (2005) but documented in this data set. Size of colored data points indicates the channel-belt thickness interpreted from well logs at that location. Colored lines indicate shelf-edge position for each interval. Beige polygon indicates area of shelf progradation for each interval. Upside-down v-pattern and dark-gray polygons indicate highlands or uplifts as denoted in Figure 1. Light green polygons denote onshore Cretaceous-age outcrop. Data from the Eocene Queen City and the Eocene Yegua intervals are included in the measurements (Supplemental Data [footnote 1]), but are not discussed in detail in the text of this paper.

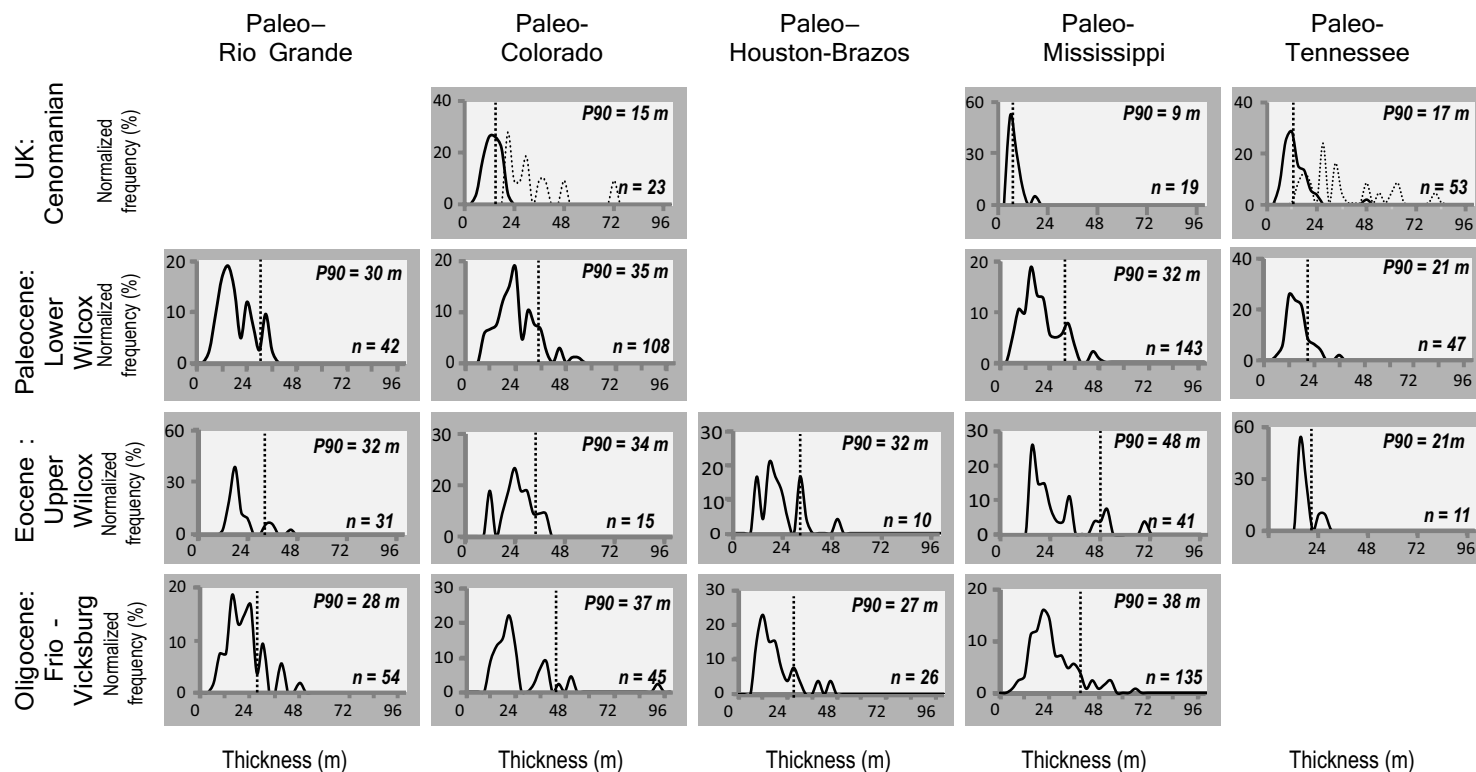


Figure 12. Channel-belt thickness probability density functions (PDFs) that describe the thickness variation as well as various fluvial system populations in a region during a specific stratigraphic interval. Solid PDF lines indicate single-cycle channel belts, as compared to dashed PDF lines that indicate interpreted multi-cycle channel belts or possibly valleys. Dashed vertical lines highlight P90 value which is the 90% statistical confidence or thickness which represents 90% of the channel-belt measurements within a given channel-belt population. UK—Upper Cretaceous.

The 90th percentile (P90) thickness was transformed into a representative drainage basin size using the Quaternary channel-belt database and best-fit line $y = 249 * x^{2.44}$ (Fig. 8A), as shown in Table 1. The P90 thickness value was chosen to reconstruct the paleo-drainage basin because this thickness most likely represents bankfull discharge of the trunk channel. As noted above, there are multiple possible explanations for the thinner populations of channel belts in a fluvial axis: the population might contain (1) measurements of distributary or anastomosing channels in addition to the trunk channel belts, and/or (2) tributary fluvial system channel belts (for additional description, see the supplemental information [footnote 1]). The most representative drainage basin area when describing the ability of the fluvial system to supply sediment to the margin is also generally the largest. Generally, the larger the drainage basin area, the greater the ability of the associated fluvial system to supply water and sediment to the margin. Fluvial systems' distributive channels that transport more water and sediment are also thicker and result in thicker channel-belt

deposits. Comparison of drainage basin size derived from channel-belt thickness shows a statistically significant correlation to drainage basin size derived from detrital zircon studies (Fig. 14; Blum et al., 2017).

Cenomanian Tuscaloosa-Woodbine

Cenomanian paleo-drainage basins for the paleo-Tennessee and paleo-Colorado had their uplands in the Ouachita and Appalachian Mountains and were on the order of 200,000 km² (Table 1; Blum et al., 2017; Fig. 14). The paleo-Tennessee channel-belt thickness is not significantly greater than that of other Cenomanian fluvial systems, but considering an arid climate in the Mississippi Salt Basin area as compared to the East Texas Basin (Chasteen, 1983), the paleo-Tennessee drainage basin might have been significantly larger. Channel-belt thicknesses in the East Texas Basin and North Louisiana Salt Basin are

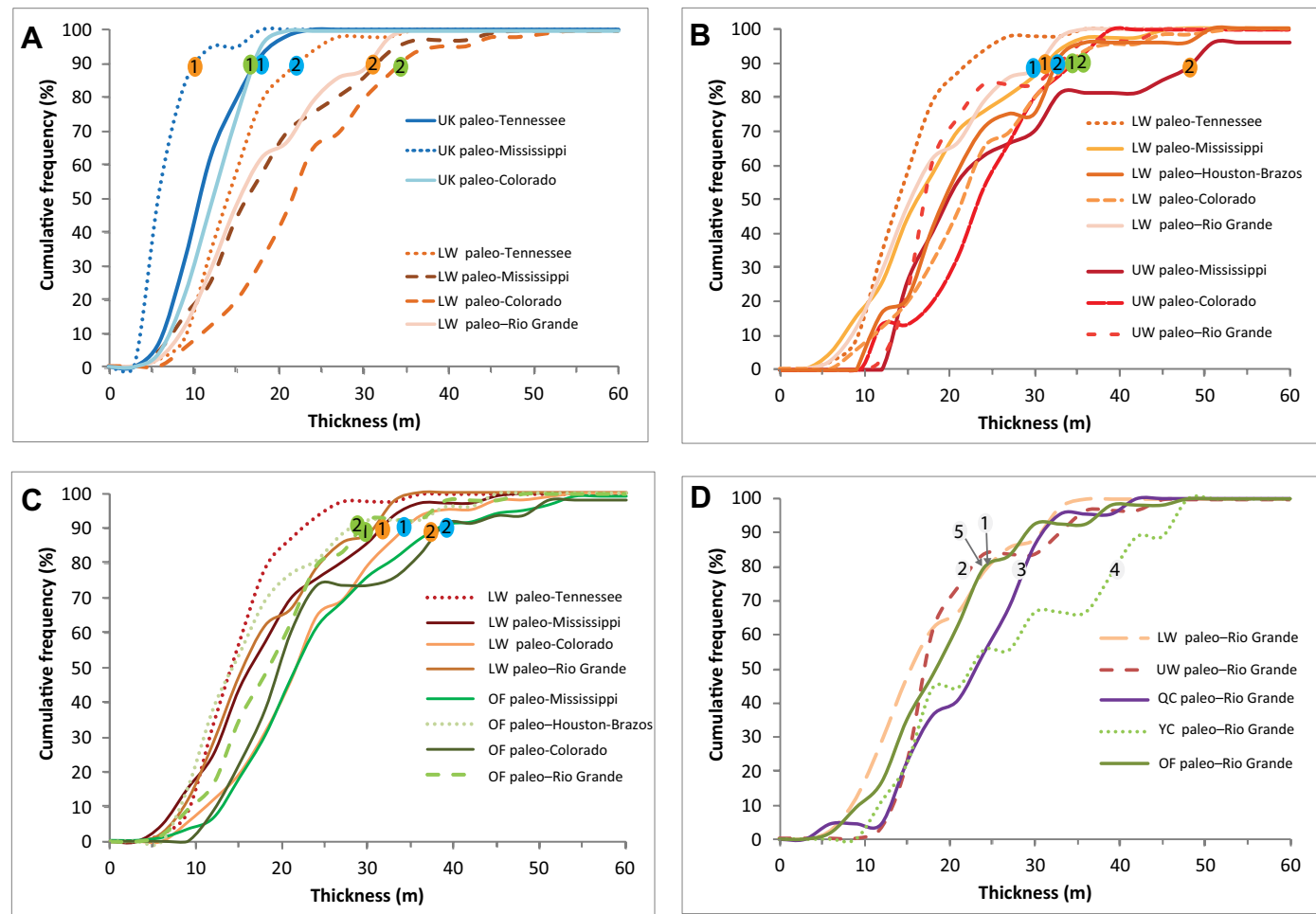


Figure 13. Cumulative frequency plots. The symbols numbered 1–5 designate relative age channel-belt thickness populations. (A) Comparison of channel-belt thickness between Cenomanian (Upper Cretaceous, UK) channel belts and Paleocene lower Wilcox (LW) channel belts. (B) Comparison between Paleocene lower Wilcox and Eocene upper Wilcox (UW) channel-belt thickness. (C) Comparison between Paleocene lower Wilcox and Vicksburg-Frio (OF) channel-belt thickness. (D) Comparison of paleo-Rio Grande fluvial system channel-belt thicknesses through time from Paleocene to Oligocene (QC—Queen City; YC—Yegua).

consistent with published well logs and conventional wisdom that links the East Texas and North Louisiana Salt Basin fluvial systems to a provenance in the Ouachita uplands (Adams and Carr, 2010; Ambrose et al., 2009; Barton, 1982; Berg and Leethem, 1985; Bonnaffé et al., 2008; Bunge, 2007; DeDominic, 1988; Dolloff et al., 1967; Halbouty and Halbouty, 1982; Harrison, 1980; McGowen and Lopez, 1983; Oliver, 1971; Scott, 1926; Stehli et al., 1972; Turner and Conger, 1984).

The channel-belt thicknesses measured in the Mississippi Salt Basin are also consistent with published well logs and literature that links the fluvial systems near the Mississippi-Louisiana state line to the Appalachian Highlands (Adams and Carr, 2010; Berg and Cook, 1968; Blum et al., 2017; Corcoran et al., 1993; Cronquist and Aime, 1968; Eisenstatt, 1960; Garrison and Chancellor, 1991; Gruebel, 1985; Hamlin and Cameron, 1987; Hogg, 1988; Karges, 1962; Klicman et al., 1988; Moore, 1962; Raymond, 2005; Stancliffe and Adams, 1986;

TABLE 1. SUMMARY OF PALEODRAINAGE RECONSTRUCTIONS, GULF OF MEXICO BASIN

Paleodrainage system	P90 point-bar thickness (m)	Reconstructed drainage area from point-bar scales (km ²)	Reconstructed drainage area from DZ studies (km ²)
Cenomanian paleo-Tennessee	17	250,000	400,000
Cenomanian paleo-Colorado*-Brazos	16	220,000	<150,000
Early Paleocene paleo-Mississippi	32	1,170,000	1,200,000
Early Paleocene paleo-Colorado	35	1,460,000	2,200,000
Early Paleocene paleo-Rio Grande	30	1,000,000	500,000
Late Paleocene to earliest Eocene paleo-Mississippi	48	3,150,000	2,200,000
Late Paleocene to earliest Eocene paleo-Colorado	34	1,360,000	1,200,000
Oligocene paleo-Mississippi	38	1,780,000	1,500,000
Oligocene paleo-Colorado**-Brazos	37	1,670,000	600,000
Oligocene paleo-Rio Grande	28	850,000	700,000

Note: P90 point-bar thickness is the statistical cumulative value that captures 90% of the channel-belt thickness measurements within a given channel-belt population. Drainage area values are plotted in Figure 14. Reconstructed drainage areas from detrital zircon (DZ) studies are from Blum et al. (2017).

*This study's Cenomanian paleo-Colorado is equivalent to the Cenomanian paleo-Colorado-Brazos of Blum et al., 2017.

**This study's Oligocene paleo-Colorado and paleo-Houston-Brazos (Figs. 2 and 12) is equivalent to the Oligocene paleo-Colorado-Brazos of Blum et al. (2017).

Stephenson and Monroe, 1938; Stevenson, 1981; Wiygul and Young, 1987; Womack, 1950). Several studies documented the paucity of fluvial strata and significant shallow-marine and deltaic strata in southern Alabama, Florida, and western Georgia (Munyan, 1943; Mancini and Payton, 1981; Mancini et al., 1987; Mancini and Tew, 1995; Petty, 1997; Warner, 1993; Galloway, 2008), which is consistent with a fluvial fairway from the Appalachians to southwestern Mississippi.

The abundance of lignite interspersed in coastal plain environments can be utilized as an indicator of groundwater inundation and climate. The Cenomanian strata of the Mississippi Salt Basin (paleo-Tennessee) do not contain significant lignite and are interpreted to represent a semi-arid climate, whereas the Cenomanian strata of the East Texas Basin (paleo-Colorado) contain abundant lignite and are interpreted to represent a humid climate (Chasteen, 1983).

Early-Middle Paleocene Lower Wilcox

The lower Wilcox paleo-drainages expanded significantly, a finding similar to those of previous studies (Galloway, 2005; Galloway et al., 2011; Mackey et al., 2012; Blum and Pecha, 2014). This study suggests that the catchment area or drainage basin of the lower Wilcox paleo-Colorado was continental scale (Blum et al., 2017; Table 1; Fig. 14). In contrast to the 20–30+-m-thick preserved channel belts in the paleo-Colorado fluvial axis, the paleo-Tennessee fluvial axis may be represented by the 16–17 m PDF peak generated from channel belts situated between the Monroe uplift and the LaSalle Arch. The differences in preserved channel-belt thickness between fluvial axes (e.g., paleo-Colorado versus paleo-Tennessee) lend credence to the fidelity of the stratigraphic record and faithful preservation of fluvial scales in ancient strata.

Previously published lower Wilcox stratigraphic studies that document blocky to fining-upward patterns in well logs, indicative of storeys or channel belts, are consistent with the channel-belt thickness populations collected in the present study. Wilcox-equivalent strata in northern Mississippi contain blocky to fining-upward patterns in well logs in lignite-rich fluvial strata on the

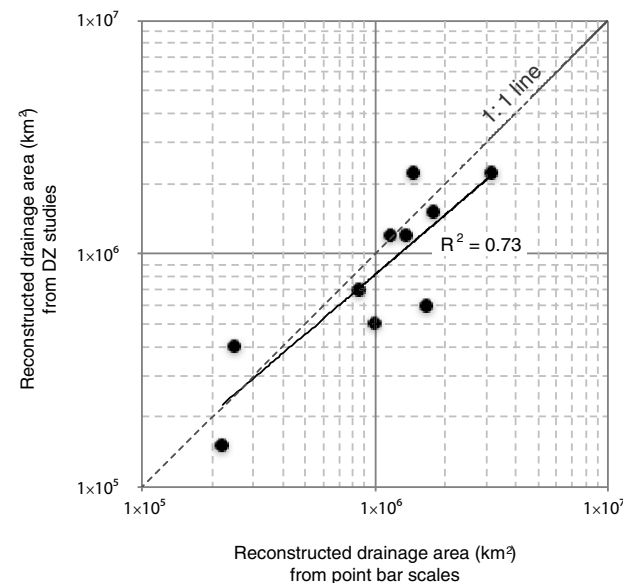


Figure 14. Plots of reconstructed drainage area from point-bar scales and detrital zircon (DZ) provenance studies (Blum et al., 2017). Data is shown in Table 1.

order of 15 m thick in NE-SW-oriented mapped sand bodies (Cleaves, 1980; Dueitt et al., 1985; Glawe et al., 1999; Hackley et al., 2007). Paleocene to Eocene strata in southwestern Mississippi are described as shallow marine, with little evidence for significant fluvial strata recorded (Dockery, 2001). Galloway (1968) documented lignite-rich fluvial strata within the Mississippi embayment from fluvial systems that fed deltas that were similar in scale to Rockdale delta lobes in Texas. Tye et al. (1991) published long regional well-log cross sections in the Wilcox strata of the Mississippi embayment that illustrate 20–30+ m-thick blocky to fining-upward log patterns in the fluvial intervals (Fig. 9). In central Texas, the lower Wilcox also contains 20–30+ m-thick blocky to fining-upward fluvial channel belts (Devine and Wheeler, 1989; Xue and Galloway, 1993). In South Texas, paleo-Rio Grande abundant lignite deposits attributed to peat swamps indicate a relatively humid climate (Breyer, 1997).

The significant variation of channel-belt thickness between 11 and 13 m in Cenomanian fluvial systems and 20–30+ m in Paleocene fluvial deposits coincides with documented plate-scale tectonic reorganization involving the Laramide orogeny (Galloway et al., 2000) and significant clastic flux to the northern Gulf of Mexico basin (Galloway, 2008).

Late Paleocene–Early Eocene Upper Wilcox

As described in the lower Wilcox section above, previous studies have documented 20–30+ m thick blocky to fining-upward well-log patterns in the upper Wilcox-age fluvial strata of the Mississippi embayment (paleo-Mississippi) and Houston embayment (paleo-Colorado; Xue and Galloway, 1995; Tye et al., 1991). Additionally, Cleaves (1980) and Hackley et al. (2007) did not differentiate the Wilcox into upper or lower in central to northern Mississippi, but illustrate 8–15-m-thick blocky to fining-upward storeys or channelbelts in lignite-rich mudstones, which is consistent with the thicknesses documented for the paleo-Tennessee. Dingus and Galloway (1990) showed a 37-m-thick fining-upward log pattern in upper Wilcox strata overlying Yoakum canyon, an interpreted buried submarine channel situated on the slope. This 37-m-thick fining-upward sequence could be interpreted as a channel belt. In South Texas, the upper Wilcox is composed of a prograding fluvial-deltaic system with 20–30-m-thick blocky to fining-upward channel belts (Edwards, 1981; Hamlin, 1983).

Previous studies that describe the depositional facies for the Eocene-age Queen City Formation (cite Fig. 3) included shallow-marine deposits in central Texas (Guevara and Garcia, 1972) and east Texas (Ramos and Galloway, 1990). A lack of fluvial channel belts in fluvial axes could be due to post-depositional passive-margin uplift and erosion of the particular facies or non-preservation because of reworking by shallow-marine processes into shallow-marine strata.

During the period correlative to the Yegua Formation, a modest rejuvenation of sediment influx related to middle Cenozoic volcanism in the Rocky Mountains resulted in fluvial progradation (Galloway, 2008) and an increase in mass wasting at the shelf margin (Edwards 1990, 1991).

Oligocene Vicksburg-Frio

Previous studies that illustrate Oligocene fluvial systems and thickness of channel belts show 10–15-m-thick fining-upward to blocky well-log patterns in an updip (potentially tributary systems) location in the paleo-Rio Grande fluvial axis (Kerr and Jirik, 1990), 13–30-m-thick channel belts (fining-upward to blocky log signature) in the paleo-Houston-Brazos fluvial axis (Reedy, 1949), and 25–30-m-thick blocky to fining-upward log packages in the central Texas paleo-Colorado fluvial axis (Combes, 1993). The Oligocene Frio Formation consists of numerous fluvial feeders across the area rather than specific input points along the Houston, Mississippi, or Rio Grande embayments (Combes, 1993; Galloway et al., 1982).

Our Oligocene drainage-basin reconstructions differ from those published by Galloway (2005) and Galloway et al. (2011), which place the headwaters of the Oligocene fluvial systems within the Rocky Mountains and ~500,000 km² drainage basins. Oligocene channel belts in the thickness range of 30–40+ m translate to drainage basins of 1,000,000 to 2,000,000 km² (Table 1).

CONCLUSIONS

A modern-river empirical relationship between fluvial channel-belt thickness and contributing drainage-basin area provides a mechanism to derive the size of ancient river catchments. The large number of drilled wells and plethora of previously published studies in the northern Gulf of Mexico basin facilitates a rigorous test of the thickness–drainage-basin area scaling relationship in ancient fluvial successions. This large clastic basin derived sediment from multiple source terrains and across different climatic regimes. The intervals studied ranged from Paleocene to Oligocene age and spanned from South Texas to eastern Alabama. For example, channel-belt thickness as interpreted and measured from well logs is substantially different in the Cenomanian-age fluvial strata as compared to the Paleocene-age fluvial strata of the northern Gulf Coast. Using Quaternary fluvial scaling to predict the drainage-basin areal extent and length suggests that the Paleocene fluvial systems were an order of magnitude larger than the Cenomanian fluvial systems. Moreover, the populations with the thickest channel belts occur in the regions underlain by tectonic embayments as compared to the areas underlain by tectonic arches. For moderate-size drainage basins, channel belts deposited in a humid climate regime are approximately two times thicker than channel belts deposited in an arid climate regime.

In general, the findings of this study corroborate the vast number of regional syntheses conducted on the northern Gulf of Mexico basin over the past several decades. General comparison of fluvial channel-belt thickness shows a positive correlation to gross sediment volume, grain-volume rate of supply, and shore-zone or delta volume metrics (Galloway, 2001; Galloway et al., 2011), and paleogeographic compilations (Galloway et al., 2000; Galloway, 2008). Furthermore, the fluvial system channel-belt thickness measurements (both

thickness and number of measurements in a given area) match shelf-margin progradation maps (Galloway, 1989, 2008) and scale predictably to drainage-basin size (Blum et al., 2017).

ACKNOWLEDGMENTS

We would like to thank reviewers Kyle Straub, Zane Jobe, and an anonymous reviewer for the helpful comments and suggestions. The manuscript was much improved by their constructive critique. We also thank Patricia Ganey-Curry and Tim Whiteaker of the GBDS research team at the University of Austin for help with access to the GBDS database.

REFERENCES CITED

- Adams, R.L., and Carr, J.P., 2010, Regional depositional systems of the Woodbine, Eagle Ford, and Tuscaloosa of the U.S. Gulf Coast: Gulf Coast Association of Geological Societies Transactions, v. 60, p. 3–27.
- Ambrose, W.A., Hentz, T.F., Bonnaffe, F., Loucks, R.G., Brown, L.F., Jr., Wang, F.P., and Potter, E.C., 2009, Sequence-stratigraphic control on complex reservoir architecture of highstand fluvial-dominated deltaic and lowstand valley-fill deposits in the Upper Cretaceous (Cenomanian) Woodbine Group, East Texas field: Regional and local perspectives: American Association of Petroleum Geologists Bulletin, v. 93, p. 231–269, <https://doi.org/10.1306/09180808053>.
- Anderson, E.G., 1980, Regional patterns of the Woodbine-Tuscaloosa (northern coastal region): Gulf Coast Association of Geological Societies Transactions, v. 30, p. 35–39.
- Baksi, A.K., 1997, The timing of Late Cretaceous alkalic igneous activity in the northern Gulf of Mexico basin, southeastern USA: The Journal of Geology, v. 105, p. 629–644, <https://doi.org/10.1086/515966>.
- Barrell, K.A., 1997, Sequence stratigraphy and structural trap styles of the Tuscaloosa Trend: Gulf Coast Association of Geological Societies Transactions, v. 47, p. 27–34.
- Barton, R.A., 1982, Contrasting depositional processes of Sub-Clarksville and Woodbine reservoir sandstones: Gulf Coast Association of Geological Societies Transactions, v. 32, p. 121–136.
- Baum, G.R., and Vail, P.R., 1988, Sequence stratigraphic concepts applied to Paleogene outcrops, Gulf and Atlantic basins, in Wilgus, C.K., Hastings, B.S., Posamentier, H., Van Wagoner, J., Ross, C.A., and Kendall, C.G.St.C., eds., Sea-Level Changes: An Integrated Approach: Society of Economic Paleontologists and Mineralogists Special Publication 42, p. 309–327, <https://doi.org/10.2110/pec.88.01.0309>.
- Berg, R.R., and Cook, B.C., 1968, Petrography and origin of Lower Tuscaloosa sandstones, Mallalieu field, Lincoln County, Mississippi: Gulf Coast Association of Geological Societies Transactions, v. 18, p. 242–255.
- Berg, R.R., and Leethem, J.T., 1985, Origin of Woodbine-Eagleford reservoir facies, Kurten field, Brazos County, Texas: Gulf Coast Association of Geological Societies Transactions, v. 35, p. 11–18.
- Bernard, H.A., Major, C.F., Parrott, B.S., and LeBlanc, R.J., Sr., 1970, Recent sediments of southeast Texas: A field guide to the Brazos alluvial and deltaic plains and the Galveston barrier island complex: University of Texas at Austin, Bureau of Economic Geology Guidebook 11, 132 p.
- Bird, D.E., Burke, K., Hall, S.A., and Casey, J.F., 2005, Gulf of Mexico tectonic history: Hotspot tracks, crustal boundaries, and early salt distribution: American Association of Petroleum Geologists Bulletin, v. 89, p. 311–328, <https://doi.org/10.1306/10280404026>.
- Blum, M., and Pecha, M., 2014, Mid-Cretaceous to Paleocene North American drainage reorganization from detrital zircons: Geology, v. 42, p. 607–610, <https://doi.org/10.1130/G35513.1>.
- Blum, M.D., and Törnqvist, T.E., 2000, Fluvial responses to climate and sea-level change: A review and look forward: Sedimentology, v. 47, p. 2–48, <https://doi.org/10.1046/j.1365-3091.2000.00008.x>.
- Blum, M., Martin, B.J., Milliken, K., and Garvin, M., 2013, Paleovalley systems: Insights from Quaternary analogs and experiments: Earth-Science Reviews, v. 116, p. 128–169, <https://doi.org/10.1016/j.earscirev.2012.09.003>.
- Blum, M.D., Milliken, K.T., Pecha, M.A., Snedden, J.W., Frederick, B.C., and Galloway, W.E., 2017, Detrital-zircon records of Cenomanian, Paleocene, and Oligocene Gulf of Mexico drainage integration and sediment routing: Implications for scales of basin-floor fans: Geosphere, v. 13, p. 2169–2205, <https://doi.org/10.1130/GES01410.1>.
- Bonnaffé, F.L., Ambrose, W.A., Hentz, T.F., Wang, F.P., and Loucks, R.G., 2008, Three-dimensional architecture of lowstand incised-valley deposits in the Woodbine Group, northern East Texas Field: Gulf Coast Association of Geological Societies Transactions, v. 58, p. 135–141.
- Bornhauser, M., 1958, Gulf Coast tectonics: American Association of Petroleum Geologists Bulletin, v. 42, p. 339–370.
- Breyer, J.A., 1997, Sequence stratigraphy of Gulf Coast lignite, Wilcox Group (Paleogene), South Texas: Journal of Sedimentary Research, v. 67, p. 1018–1029.
- Bridge, J.S., 1993, The interaction between channel geometry, water flow, sediment transport and deposition in braided rivers, in Best, J.L., and Bristow, C.S., eds., Braided Rivers: Geological Society of London Special Publication 75, p. 13–71, <https://doi.org/10.1144/GSL.SP.1993.075.01.02>.
- Bridge, J.S., 2003, Rivers and Floodplains: Forms, Processes, and Sedimentary Record: Oxford, UK, Blackwell Science Ltd, 504 p.
- Bridge, J.S., and Lunt, I.A., 2006, Depositional models of braided rivers, in Sambrook Smith, G.H., Best, J.L., Bristow, C.S., and Petts, G.E., eds., Braided Rivers: Process, Deposits, Ecology and Management: International Association of Sedimentologists Special Publication 36, p. 9–50.
- Bridge, J.S., and Tye, R.S., 2000, Interpreting the dimensions of ancient fluvial channel bars, channels, and channel belts from wireline-logs and cores: American Association of Petroleum Geologists Bulletin, v. 84, p. 1205–1228, <https://doi.org/10.1306/A9673C84-1738-11D7-8645000102C1865D>.
- Bunge, R.J., 2007, Woodbine Formation sandstone reservoir prediction and variability, Polk and Tyler counties, Texas: Gulf Coast Association of Geological Societies Transactions, v. 57, p. 77–98.
- Chasteen, H.R., 1983, Reevaluation of the Lower Tuscaloosa and Dantzer formations (Mid-Cretaceous) with emphasis on depositional environments and time-stratigraphic relationships: Gulf Coast Association of Geological Societies Transactions, v. 33, p. 31–40.
- Claudet, A.P., 1950, New method of correlation by resistivity values of electrical logs: American Association of Petroleum Geologists Bulletin, v. 34, p. 2027–2050.
- Cleaves, A.W., 1980, Depositional systems and lignite prospecting models: Wilcox Group and Meridian Sandstone of northern Mississippi: Gulf Coast Association of Geological Societies Transactions, v. 30, p. 283–307.
- Coleman, J.M., and Prior, D.B., 1982, Deltaic environments of deposition, in Scholle P.A., and Spearing, D., eds., Sandstone Depositional Environments: American Association of Petroleum Geologists Memoir 31, p. 139–178, <https://doi.org/10.1306/M31424C7>.
- Combes, J.M., 1993, The Vicksburg Formation of Texas: Depositional systems distribution, sequence stratigraphy, and petroleum geology: American Association of Petroleum Geologists Bulletin, v. 77, p. 1942–1970.
- Corcoran, M.K., Cameron, C.P., and Meylan, M.A., 1993, The lower Tuscaloosa Formation in the Greensburg Field and Joseph Branch Field Areas, St. Helena Parish, Louisiana: Gulf Coast Association of Geological Societies Transactions, v. 43, p. 87–96.
- Cox, R.T., and Van Arsdale, R.B., 2002, The Mississippi Embayment, North America: A first order continental structure generated by the Cretaceous superplume mantle event: Journal of Geodynamics, v. 34, p. 163–176, [https://doi.org/10.1016/S0264-3707\(02\)00019-4](https://doi.org/10.1016/S0264-3707(02)00019-4).
- Cronquist, C., and Aime, M., 1968, Waterflooding by linear displacement in Little Creek Field, Mississippi: Journal of Petroleum Technology, v. 20, 8 p.
- Cushing, E.M., Boswell, E.H., and Hosman, R.L., 1964, General geology of the Mississippi embayment: U.S. Geological Survey Professional Paper 448-B, 28 p.
- Dallmeyer, R.D., 1989, ⁴⁰Ar/³⁹Ar ages from subsurface crystalline basement of the Wiggins Uplift and southwesternmost Appalachian Piedmont: Implications for late Paleozoic terrane accretion during assembly of Pangea: American Journal of Science, v. 289, p. 812–828, <https://doi.org/10.2475/ajs.289.6.812>.
- Davidson, S.K., and North, C.P., 2009, Geomorphological regional curves for prediction of drainage area and screening modern analogues for rivers in the rock record: Journal of Sedimentary Research, v. 79, p. 773–792, <https://doi.org/10.2110/jsr.2009.080>.
- DeDominic, J.R., 1988, Deposition of the Woodbine-Eagleford sandstones, Aggieland field, Brazos County, Texas: Gulf Coast Association of Geological Societies Transactions, v. 38, p. 61–68.
- Devine, P.E., and Wheeler, D.M., 1989, Correlation, interpretation, and exploration potential of lower Wilcox valley-fill sequences, Colorado and Lavaca Counties, Texas: Gulf Coast Association of Geological Societies Transactions, v. 39, p. 57–74.

- Dingus, W.F., and Galloway, W.E., 1990, Morphology, paleogeographic setting, and origin of the middle Wilcox Yoakum Canyon, Texas coastal plain: *American Association of Petroleum Geologists Bulletin*, v. 74, p. 1055–1076.
- Dockery, D.T., III, 2001, Correlation of the Wilcox producing zones (late Paleocene–early Eocene) of southwestern Mississippi with the type Midway/Wilcox section of Alabama: *Gulf Coast Association of Geological Societies Transactions*, v. 51, p. 63–73.
- Dolloff, J.H., Rozendal, R.A., Siratovich, E.N., Swain, F.M., and Woncik, J., 1967, Subsurface Upper Cretaceous stratigraphy of southwestern Arkansas: *Gulf Coast Association of Geological Societies Transactions*, v. 17, p. 76–104.
- Dubiel, R.F., Pitman, J.K., and Steinshouer, D., 2003, Seismic-sequence stratigraphy and petroleum system modeling of the downdip Tuscaloosa-Woodbine, LA and TX: *Gulf Coast Association of Geological Societies Transactions*, v. 53, p. 193–203.
- Dueitt, D.S., Froelicher, F., and Rosso, S.W., 1985, Depositional environments of Wilcox lignites in Choctaw and Winston Counties, Mississippi: *Gulf Coast Association of Geological Societies Transactions*, v. 35, p. 347–351.
- Edwards, M.B., 1981, Upper Wilcox Rosita delta system of South Texas: Growth-faulted shelf-edge deltas: *American Association of Petroleum Geologists Bulletin*, v. 65, p. 54–73.
- Edwards, M.B., 1990, Stratigraphic analysis and reservoir prediction in the Eocene Yegua and Cook Mountain Formations of Texas and Louisiana: *Houston Geological Society Bulletin*, v. 33, p. 37–50.
- Edwards, M.B., 1991, Control of depositional environments, eustasy, gravity, and salt tectonics on sandstone distribution in an unstable shelf edge delta, Eocene Yegua Formation, Texas and Louisiana: *Gulf Coast Association of Geological Societies Transactions*, v. 41, p. 237–252.
- Eisenstatt, P., 1960, Little Creek Field, Lincoln and Pike Counties, Mississippi: *Gulf Coast Association of Geological Societies Transactions*, v. 10, p. 207–213.
- Ervin, C.P., and McGinnis, L.D., 1975, Reelfoot rift: Reactivated precursor to the Mississippi embayment: *Geological Society of America Bulletin*, v. 86, p. 1287–1295, [https://doi.org/10.1130/0016-7606\(1975\)86<1287:RRRPTT>2.0.CO;2](https://doi.org/10.1130/0016-7606(1975)86<1287:RRRPTT>2.0.CO;2).
- Ewing, T.E., 1991, Structural framework, in Salvador, A., ed., *The Gulf of Mexico Basin: Boulder, Colorado, Geological Society of America, The Geology of North America*, v. J, p. 31–52, <https://doi.org/10.1130/DNAG-GNA-J.31>.
- Fernandes, A.M., Törnqvist, T.E., Straub, K.M., and Mohrig, D., 2016, Connecting the backwater hydraulics of coastal rivers to fluvio-deltaic sedimentology and stratigraphy: *Geology*, v. 44, p. 979–982, <https://doi.org/10.1130/G37965.1>.
- Fisher, W.L., and McGowen, J.H., 1969, Depositional systems in Wilcox Group (Eocene) of Texas and their relation to occurrence of oil and gas: *American Association of Petroleum Geologists Bulletin*, v. 53, p. 30–54.
- Funkhouser, L.W., Bland, F.X., and Humphris, C.C., Jr., 1981, The deep Tuscaloosa gas trend of South Louisiana, in Steward, D.B., ed., *Tuscaloosa Trend of South Louisiana: New Orleans, Louisiana, New Orleans Geological Society*, p. 5–25.
- Galloway, W.E., 1968, Depositional systems of the lower Wilcox Group, north-central Gulf Coast Basin: *Gulf Coast Association of Geological Societies Transactions*, v. 18, p. 275–289.
- Galloway, W.E., 1989, Genetic stratigraphic sequences in basin analysis II: Application to north-west Gulf of Mexico Cenozoic basin: *American Association of Petroleum Geologists Bulletin*, v. 73, p. 143–154.
- Galloway, W.E., 2001, Cenozoic evolution of sediment accumulation in deltaic and shore-zone depositional systems, Northern Gulf of Mexico Basin: *Marine and Petroleum Geology*, v. 18, p. 1031–1040, [https://doi.org/10.1016/S0264-8172\(01\)00045-9](https://doi.org/10.1016/S0264-8172(01)00045-9).
- Galloway, W.E., 2005, Gulf of Mexico basin depositional record of Cenozoic North American drainage basin evolution, in Blum, M.D., Marriott, S.B., and Leclair, S.F., eds., *Fluvial Sedimentology VII: International Association of Sedimentologists Special Publication 35*, p. 409–423, <https://doi.org/10.1002/9781444304350.ch22>.
- Galloway, W.E., 2008, Depositional evolution of the Gulf of Mexico sedimentary basin, in Miall, A.D., ed., *The Sedimentary Basins of the United States and Canada: Sedimentary Basins of the World: Amsterdam, The Netherlands, Elsevier*, v. 5, p. 505–549, [https://doi.org/10.1016/S1874-5997\(08\)00015-4](https://doi.org/10.1016/S1874-5997(08)00015-4).
- Galloway, W.E., Hobday, D.K., and Magara, K., 1982, Frio Formation of the Texas Gulf Coast Basin: Depositional systems, structural framework, and hydrocarbon origin, migration, distribution, and exploration potential: *University of Texas at Austin, Bureau of Economic Geology Report of Investigations 122*, 78 p.
- Galloway, W.E., Ganey-Curry, P., Li, X., and Buffler, R.T., 2000, Cenozoic depositional evolution of the Gulf of Mexico basin: *American Association of Petroleum Geologists Bulletin*, v. 84, p. 1743–1774.
- Galloway, W.E., Whiteaker, T.L., and Ganey-Curry, P., 2011, History of Cenozoic North American drainage basin evolution, sediment yield, and accumulation in the Gulf of Mexico basin: *Geosphere*, v. 7, p. 938–973, <https://doi.org/10.1130/GES00647.1>.
- Garrison, R.K., and Chancellor, R., 1991, Berwick Field: The geologic half of the seismic stratigraphic story in the Lower Tuscaloosa Mississippi: *Gulf Coast Association of Geological Societies Transactions*, v. 41, p. 299–307.
- Glawe, L.N., Young, L.M., and Roberts, H.H., 1999, Petrology, paleontology, and paleoenvironments of Wilds and Lower Nichols sands: Subsurface Paleocene Wilcox units in Louisiana: *Gulf Coast Association of Geological Societies Transactions*, v. 49, p. 266–273.
- Granata, W.H., Jr., 1963, Cretaceous stratigraphy and structural development of the Sabine uplift area, Texas and Louisiana, in Herrmann, L.A., ed., *Report on Selected North Louisiana and South Arkansas Oil and Gas Fields: Shreveport, Louisiana, Shreveport Geological Society, Reference Reports on Oil and Gas Fields*, v. V, p. 50–95.
- Grubel, R.D., 1985, Exploring the Lower Tuscaloosa in southwest Mississippi: *Gulf Coast Association of Geological Societies Transactions*, v. 35, p. 87–96.
- Guevara, E.H., and Garcia, R., 1972, Depositional systems and oil-gas reservoirs in the Queen City Formation (Eocene), Texas: *Gulf Coast Association of Geological Societies Transactions*, v. 22, p. 1–22.
- Hackley, P.C., Warwick, P.D., and Clayton Breland, F., Jr., 2007, Organic petrology and coalbed gas content, Wilcox Group (Paleocene–Eocene), northern Louisiana: *International Journal of Coal Geology*, v. 71, p. 54–71, <https://doi.org/10.1016/j.coal.2006.05.009>.
- Halbouty, M.T., and Halbouty, J.J., 1982, Relationships between East Texas Field region and Sabine Uplift in Texas: *American Association of Petroleum Geologists Bulletin*, v. 66, p. 1042–1054.
- Hale-Erlich, W.S., and Coleman, J.L., Jr., 1993, Ouachita-Appalachian juncture: A Paleozoic transpressional zone in the southeastern U.S.A.: *American Association of Petroleum Geologists Bulletin*, v. 77, p. 552–568.
- Hamlin, H.S., 1983, Carrizo–Upper Wilcox depositional systems and their relation to updip oil production in South Texas: *South Texas Geological Society Bulletin*, v. 23, no. 9, p. 3, 17–26.
- Hamlin, K.H., and Cameron, C.P., 1987, Sandstone petrology and diagenesis of Lower Tuscaloosa Formation reservoirs in the McComb and Little Creek Field areas, southwest Mississippi: *Gulf Coast Association of Geological Societies Transactions*, v. 37, p. 95–104.
- Harrison, F.W., Jr., 1980, Louisiana Tuscaloosa versus southeast Texas Woodbine: *Gulf Coast Association of Geological Societies Transactions*, v. 30, p. 105–111.
- Harry, D.L., and Londono, J., 2004, Structure and evolution of the central Gulf of Mexico continental margin and coastal plain, southeast United States: *Geological Society of America Bulletin*, v. 116, p. 188–199, <https://doi.org/10.1130/B25237.1>.
- Helland-Hansen, W., Sømme, T.O., Martinsen, O.J., Lunt, I., and Thurmond, J., 2016, Deciphering Earth's natural hourglasses: Perspectives on source-to-sink analysis: *Journal of Sedimentary Research*, v. 86, p. 1008–1033, <https://doi.org/10.2110/jsr.2016.56>.
- Hogg, M.D., 1988, Newtonia Field: A model for mid-dip Lower Tuscaloosa retrograde deltaic sedimentation: *Gulf Coast Association of Geological Societies Transactions*, v. 38, p. 461–471.
- Jung Echols, D., and Malkin, D.S., 1948, Wilcox (Eocene) stratigraphy, a key to production: *American Association of Petroleum Geologists Bulletin*, v. 32, p. 11–33.
- Kane, M.F., Hildenbrand, T.G., and Hendricks, J.D., 1981, Model for the tectonic development of the Mississippi embayment and its contemporary seismicity: *Geology*, v. 9, p. 563–568, [https://doi.org/10.1130/0091-7613\(1981\)9<563:MFTTEO>2.0.CO;2](https://doi.org/10.1130/0091-7613(1981)9<563:MFTTEO>2.0.CO;2).
- Karges, H.E., 1962, Significance of Lower Tuscaloosa sand patterns in southwest Mississippi: *Gulf Coast Association of Geological Societies Transactions*, v. 12, p. 171–185.
- Kerr, D.R., and Jirik, L.A., 1990, Fluvial architecture and reservoir compartmentalization in the Oligocene middle Frio Formation, South Texas: *Gulf Coast Association of Geological Societies Transactions*, v. 40, p. 373–380.
- Kidwell, A.L., 1951, Mesozoic igneous activity in the northern Gulf Coastal Plain: *Gulf Coast Association of Geological Societies Transactions*, v. 1, p. 182–199.
- Klicman, D.P., Cameron, C.P., and Meylan, M.A., 1988, Petrology and depositional environments of Lower Tuscaloosa Formation (Upper Cretaceous) sandstones in the North Hustler and Thompson Field areas, southwest Mississippi: *Gulf Coast Association of Geological Societies Transactions*, v. 38, p. 47–58.

- Lawless, P.N., and Hart, G.F., 1990, The LaSalle Arch and its effects on lower Paleogene genetic sequence stratigraphy, Nebo-Hemphill Field, LaSalle Parish, Louisiana: *Gulf Coast Association of Geological Societies Transactions*, v. 40, p. 459–473.
- Leopold, L.B., Wolman, M.G., and Miller, J.P., 1962, *Fluvial Processes in Geomorphology*: Toronto, Ontario, General Publishing Company, 522 p.
- Mackey, G.N., Horton, B.K., and Milliken, K.L., 2012, Provenance of the Paleocene–Eocene Wilcox Group, western Gulf of Mexico basin: Evidence for integrated drainage of the southern Laramide Rocky Mountains and Cordilleran arc: *Geological Society of America Bulletin*, v. 124, p. 1007–1024, <https://doi.org/10.1130/B30458.1>.
- Mancini, E.A., and Payton, J.W., 1981, Petroleum geology of South Carlton field, lower Tuscaloosa “Pilot Sand”, Clarke and Baldwin Counties, Alabama: *Gulf Coast Association of Geological Societies Transactions*, v. 31, p. 139–147.
- Mancini, E.A., and Puckett, T.M., 2005, Jurassic and Cretaceous transgressive-regressive (T-R) cycles, northern Gulf of Mexico, U.S.A.: *Stratigraphy*, v. 2, p. 31–48.
- Mancini, E.A., and Tew, B.H., 1995, Geochronology, biostratigraphy and sequence stratigraphy of a marginal marine to marine shelf stratigraphic succession: Upper Paleocene and lower Eocene, Wilcox Group, eastern Gulf Coastal Plain, U.S.A., in Berggren, W.A., Kent, D.V., Aubry, M.-P., and Hardenbol, J., eds., *Geochronology, Time Scales and Global Stratigraphic Correlation: SEPM (Society for Sedimentary Geology) Special Publication 54*, p. 281–293, <https://doi.org/10.2110/pec.95.04.0281>.
- Mancini, E.A., Mink, R.M., Payton, J.W., and Bearden, B.L., 1987, Environments of deposition and petroleum geology of Tuscaloosa group (Upper Cretaceous), South Carlton and Polard fields, southwestern Alabama: *American Association of Petroleum Geologists Bulletin*, v. 71, p. 1128–1142.
- Mancini, E.A., Obid, J., Badali, M., Liu, K., and Parcell, W.C., 2008, Sequence-stratigraphic analysis of Jurassic and Cretaceous strata and petroleum exploration in the central and eastern Gulf coastal plain, United States: *American Association of Petroleum Geologists Bulletin*, v. 92, p. 1655–1686, <https://doi.org/10.1306/08130808046>.
- Martin, R.G., 1978, Northern and eastern Gulf of Mexico continental margin stratigraphic and structural framework: 1. The setting, in Bouma, A.H., Moore, G.T., and Coleman, J.M., eds., *Framework, Facies, and Oil-Trapping Characteristics of the Upper Continental Margin: American Association of Petroleum Geologists Studies in Geology 7*: Tulsa, Oklahoma, p. 21–42.
- Marton, G., and Buffler, R.T., 1993, Application of simple-shear model to the evolution of passive continental margins of the Gulf of Mexico basin: *Geology*, v. 21, p. 495–498, [https://doi.org/10.1130/0091-7613\(1993\)021<0495:AOSMT>2.3.CO;2](https://doi.org/10.1130/0091-7613(1993)021<0495:AOSMT>2.3.CO;2).
- Matton, G., and Jébrak, M., 2009, The Cretaceous Peri-Atlantic Alkaline Pulse (PAAP): Deep mantle plume origin or shallow lithosphere break-up?: *Tectonophysics*, v. 469, p. 1–12, <https://doi.org/10.1016/j.tecto.2009.01.001>.
- McGowen, M.K., and Lopez, C.M., 1983, Depositional systems in the Nacatoch Formation (Upper Cretaceous), northeast Texas and southwest Arkansas: University of Texas at Austin, Bureau of Economic Geology Report of Investigations 137, 59 p.
- Milliken, K.T., Blum, M.D., Snedden, J.S., and Galloway, B., 2016, Cenomanian Gulf of Mexico paleo-drainage—Application of channel-belt scaling to drainage basins, in Lowery, C.M., Snedden, J.W., and Rosen, N.C., eds., *Mesozoic of the Gulf Rim and Beyond: New Progress in Science and Exploration of the Gulf of Mexico Basin—Proceedings of the 35th Annual Gulf Coast Section SEPM Foundation Perkins-Rosen Research Conference*: Houston, Texas, p. 367–379.
- Mitchum, R.M., and Van Wagoner, J.C., 1991, High-frequency sequences and their stacking patterns: Sequence-stratigraphic evidence of high-frequency eustatic cycles: *Sedimentary Geology*, v. 70, p. 131–160, [https://doi.org/10.1016/0037-0738\(91\)90139-5](https://doi.org/10.1016/0037-0738(91)90139-5).
- Moody, C.L., 1949, Mesozoic igneous rocks of northern Gulf Coastal Plain: *American Association of Petroleum Geologists Bulletin*, v. 33, p. 1410–1428.
- Moore, W.H., 1962, Stratigraphic implications from studies of the Mesozoic of central and southern Mississippi: *Gulf Coast Association of Geological Societies Transactions*, v. 12, p. 157–170.
- Munyan, A.C., 1943, Subsurface stratigraphy and lithology of Tuscaloosa Formation in south-eastern Gulf Coastal Plain: *American Association of Petroleum Geologists Bulletin*, v. 27, p. 596–607.
- Nunn, J.A., 1990, Relaxation of continental lithosphere: An explanation for Late Cretaceous reactivation of the Sabine Uplift of Louisiana-Texas: *Tectonics*, v. 9, p. 341–359, <https://doi.org/10.1029/TC009i002p00341>.
- Oliver, W.B., 1971, Depositional systems in the Woodbine Formation (Upper Cretaceous), north-east Texas: University of Texas at Austin, Bureau of Economic Geology Report of Investigations 73, 28 p.
- Peel, F.J., Travis, C.J., and Hossack, J.R., 1995, Genetic structural provinces and salt tectonics of the Cenozoic offshore U.S. Gulf of Mexico: A preliminary analysis, in Jackson, M.P.A., Roberts, D.G., and Snelson, S., eds., *Salt Tectonics: A Global Perspective: American Association of Petroleum Geologists Memoir 65*, p. 153–176.
- Petty, A.J., 1997, Lower Tuscaloosa clastic facies distribution (Upper Cretaceous), Federal and state waters, eastern Gulf of Mexico: *Gulf Coast Association of Geological Societies Transactions*, v. 47, p. 453–462.
- Plink-Björklund, P., 2015, Morphodynamics of rivers strongly affected by monsoon precipitation: Review of depositional style and forcing factors: *Sedimentary Geology*, v. 323, p. 110–147, <https://doi.org/10.1016/j.sedgeo.2015.04.004>.
- Rainwater, E.H., 1967, Resume of Jurassic to recent sedimentation history of the Gulf of Mexico basin: *Gulf Coast Association of Geological Societies Transactions*, v. 17, p. 179–210.
- Ramos, A., and Galloway, W.E., 1990, Facies and sand-body geometry of the Queen City (Eocene) tide-dominated delta-margin embayment, NW Gulf of Mexico Basin: *Sedimentology*, v. 37, p. 1079–1098, <https://doi.org/10.1111/j.1365-3091.1990.tb01847.x>.
- Raymond, D.E., 2005, The Coker Formation of the Tuscaloosa Group in the Cottondale 75-minute quadrangle, Tuscaloosa County, Alabama: *Alabama Geological Society Guidebook 42a*, 51 p.
- Reedy, F., Jr., 1949, *Stratigraphy of Frio Formation, Orange and Jefferson Counties, Texas*: American Association of Petroleum Geologists Bulletin, v. 33, p. 1830–1858.
- Romans, B.W., Castelltort, S., Covault, J.A., Fildani, A., and Walsh, J.P., 2016, Environmental signal propagation in sedimentary systems across timescales: *Earth-Science Reviews*, v. 153, p. 7–29, <https://doi.org/10.1016/j.earscirev.2015.07.012>.
- Salter, T., 1993, Fluvial scour and incision: Models for their influence on the development of realistic reservoir geometries, in North, C.P., and Prosser, D.J., eds., *Characterization of Fluvial and Aeolian Reservoirs: Geological Society of London Special Publication 73*, p. 33–51, <https://doi.org/10.1144/GSL.SP.1993.073.01.04>.
- Sawyer, D.S., Buffler, R.T., and Pilger, R.H., Jr., 1991, The crust under the Gulf of Mexico basin, in Salvador, A., ed., *The Gulf of Mexico Basin: Boulder, Colorado, Geological Society of America, The Geology of North America*, v. J, p. 53–72, <https://doi.org/10.1130/DNAG-GNA-J.53>.
- Scott, G., 1926, The Woodbine sand of Texas interpreted as a regressive phenomenon: *American Association of Petroleum Geologists Bulletin*, v. 10, p. 613–624.
- Seni, S.J., and Jackson, M.P.A., 1984, Sedimentary record of Cretaceous and Tertiary salt movement, East Texas Basin: University of Texas at Austin, Bureau of Economic Geology Report of Investigations 139, 89 p.
- Sømme, T.O., Helland-Hansen, W., Martinsen, O.J., and Thurmond, J.B., 2009, Relationships between morphological and sedimentological parameters in source-to-sink systems: A basis for predicting semi-quantitative characteristics in subsurface systems: *Basin Research*, v. 21, p. 361–387, <https://doi.org/10.1111/j.1365-2117.2009.00397.x>.
- Snedden, J.W., Galloway, W.E., Xu, J., Milliken, K., Blum, M.D., and Whiteaker, T.L., 2018, Validation of empirical source to sink scaling relationships in a continental scale system: The Gulf of Mexico Basin Cenozoic record: *Geosphere*, <https://doi.org/10.1130/GES01452.1>.
- Stancliffe, R.J., and Adams, E.R., 1986, Lower Tuscaloosa fluvial channel styles at Liberty Field, Amite County, Mississippi: *Gulf Coast Association of Geological Societies Transactions*, v. 36, p. 305–313.
- Stearns, R.G., 1957, Cretaceous, Paleocene, and lower Eocene geologic history of the northern Mississippi Embayment: *Geological Society of America Bulletin*, v. 68, p. 1077–1100, [https://doi.org/10.1130/0016-7606\(1957\)68\[1077:CPALEG\]2.0.CO;2](https://doi.org/10.1130/0016-7606(1957)68[1077:CPALEG]2.0.CO;2).
- Stearns MacNeil, F.S., 1966, Middle Tertiary sedimentary regimen of Gulf coastal region: *American Association of Petroleum Geologists Bulletin*, v. 50, p. 2344–2365.
- Stehli, F.G., Creath, W.B., Upshaw, C.F., and Forgotson, J.M., Jr., 1972, Depositional history of Gulfian Cretaceous of East Texas embayment: *American Association of Petroleum Geologists Bulletin*, v. 56, p. 38–67.
- Stephenson, L.W., and Monroe, W.H., 1938, *Stratigraphy of Upper Cretaceous series in Mississippi and Alabama*: American Association of Petroleum Geologists Bulletin, v. 22, p. 1639–1657.
- Stevenson, J.A., 1981, Log evaluation of wells in the Tuscaloosa trend of South Louisiana, in Steward, D.B., ed., *Tuscaloosa Trend of South Louisiana*: New Orleans, Louisiana, New Orleans Geological Society, p. 27–46.

- Syvitski, J., and Milliman, J., 2007, Geology, geography, and humans battle for dominance over the delivery of fluvial sediment to the coastal ocean: *The Journal of Geology*, v. 115, p. 1–19, <https://doi.org/10.1086/509246>.
- Thomas, W.A., 1985, The Appalachian-Ouachita connection: Paleozoic orogenic belt at the southern margin of North America: *Annual Review of Earth and Planetary Sciences*, v. 13, p. 175–199, <https://doi.org/10.1146/annurev.ea.13.050185.001135>.
- Turner, J.R., and Conger, S.J., 1984, Environment of deposition and reservoir properties of the Woodbine Sandstone at Kurten Field, Brazos Co., Texas, *in* Tillman, R.W., and Siemers, C.T., eds., *Siliciclastic Shelf Sediments: SEPM (Society for Sedimentary Geology) Special Publication 34*, p. 215–249, <https://doi.org/10.2110/pec.84.34.0215>.
- Tye, R.S., Moslow, T.F., Kimbrell, W.C., and Wheeler, C.W., 1991, Lithostratigraphy and production characteristics of the Wilcox Group (Paleocene-Eocene) in central Louisiana: *American Association of Petroleum Geologists Bulletin*, v. 75, p. 1675–1713.
- Van Arsdale, R.B., and TenBrink, R.K., 2000, Late Cretaceous and Cenozoic geology of the New Madrid seismic zone: *Bulletin of the Seismological Society of America*, v. 90, p. 345–356, <https://doi.org/10.1785/0119990088>.
- Viele, G.W., and Thomas, W.A., 1989, Tectonic synthesis of the Ouachita orogenic belt, *in* Hatcher, R.D., Jr., Thomas, W.W., and Viele, G.W., eds., *The Appalachian-Ouachita Orogen in the United States: Boulder, Colorado, Geological Society of America, The Geology of North America*, v. F-2, p. 695–728, <https://doi.org/10.1130/DNAG-GNA-F2.695>.
- Wahl, P.J., Yancey, T.E., Pope, M.C., Miller, B.V., and Ayers, W.B., 2016, U-Pb detrital zircon geochronology of the Upper Paleocene to Lower Eocene Wilcox Group, east-central Texas: *Geosphere*, v. 12, p. 1517–1531, <https://doi.org/10.1130/GES01313.1>.
- Warner, A.J., 1993, Regional geologic framework of the Cretaceous, offshore Mississippi: Mississippi Department of Environmental Quality, Office of Geology Open-File Report 21, 40 p.
- Whitaker, A.E., and Engelder, T., 2006, Plate-scale stress fields driving the tectonic evolution of the central Ouachita salient, Oklahoma and Arkansas: *Geological Society of America Bulletin*, v. 118, p. 710–723, <https://doi.org/10.1130/B25780.1>.
- Willis, B.J., 1989, Palaeochannel reconstructions from point bar deposits: A three-dimensional perspective: *Sedimentology*, v. 36, p. 757–766, <https://doi.org/10.1111/j.1365-3091.1989.tb01744.x>.
- Willis, B.J., and Tang, H., 2010, Three-dimensional connectivity of point-bar deposits: *Journal of Sedimentary Research*, v. 80, p. 440–454, <https://doi.org/10.2110/jsr.2010.046>.
- Winker, C.D., and Buffler, R.T., 1988, Paleogeographic evolution of early deep-water Gulf of Mexico and margins, Jurassic to Middle Cretaceous (Comanchean): *American Association of Petroleum Geologists Bulletin*, v. 72, p. 318–346.
- Wiygul, G.J., and Young, L.M., 1987, A subsurface study of the Lower Tuscaloosa Formation at Olive Field, Pike and Amite Counties, Mississippi: *Gulf Coast Association of Geological Societies Transactions*, v. 37, p. 295–302.
- Womack, R., Jr., 1950, Brookhaven oil field, Lincoln County, Mississippi: *American Association of Petroleum Geologists Bulletin*, v. 34, p. 1517–1529.
- Xu, J., Snedden, J.W., Galloway, W.E., Milliken, K.T., and Blum, M.D., 2017, Channel-belt scaling relationships and application to the early Miocene source-to-sink systems in the Gulf of Mexico basin: *Geosphere*, v. 13, p. 176–200, <https://doi.org/10.1130/GES01376.1>.
- Xue, L., 1997, Depositional cycles and evolution of the Paleogene Wilcox strata, Gulf of Mexico basin, Texas: *American Association of Petroleum Geologists Bulletin*, v. 81, p. 937–953.
- Xue, L., and Galloway, W.E., 1993, Sequence stratigraphic and depositional framework of the Paleocene lower Wilcox strata, northwest Gulf of Mexico Basin: *Gulf Coast Association of Geological Societies Transactions*, v. 43, p. 453–464.
- Xue, L., and Galloway, W.E., 1995, High-resolution depositional framework of the Paleocene middle Wilcox strata, Texas coastal plain: *American Association of Petroleum Geologists Bulletin*, v. 79, p. 205–230.
- Yurewicz, D.A., Marler, T.B., Meyerholtz, K.A., and Siroky, F.X., 1993, Early Cretaceous carbonate platform, north rim of the Gulf of Mexico, Mississippi and Louisiana, *in* Simo, J.A.T., Scott, R.W., and Masse, J.-P., eds., *Cretaceous Carbonate Platforms: American Association of Petroleum Geologists Memoir 56*, p. 81–96.

Corpus Christi Geological Society Papers available for purchase at the Texas Bureau of Economic Geology

Note: Publication codes are hyperlinked to their online listing in [The Bureau Store](http://begstore.beg.utexas.edu/store/) (<http://begstore.beg.utexas.edu/store/>).

Cretaceous-Wilcox-Frio Symposia, D. B. Clutterbuck, Editor, 41 p., 1962.
[CCGS 002S](#) \$15.00

Type Logs of South Texas Fields, Vol. I, Frio Trend. Compiled by Don Kling. Includes 134 fields. 158 p., 1972. Ring binder.
[CCGS 015TL](#) \$25.00

Type Logs of South Texas Fields, Vol. II, Wilcox (Eocene) Trend. Compiled by M. A. Wolbrink. 98 p., 1979. Ring binder.
[CCGS 016TL](#) \$25.00

Field Trip Guidebooks

South Texas Uranium. J. L. Cowdrey, Editor. 62 p., 1968.
[CCGS 102G](#) \$12.00

Hidalgo Canyon and La Popa Valley, Nuevo Leon, Mexico. CCGS 1970 Spring Field Conference. 78 p., 1970.
[CCGS 103G](#) \$8.00

Padre Island National Seashore Field Guide. R. N. Tench and W. D. Hodgson, Editors. 61 p., 1972.
[CCGS 104G](#) \$5.00

Triple Energy Field Trip, Uranium, Coal, Gas—Duval, Webb & Zapata Counties, Texas. George Faga, Editor. 24 p., 1975.
[CCGS 105G](#) \$10.00

Minas de Golondrinas and Minas Rancherías, Mexico. Robert Manson and Barbara Beynon, Editors. 48 p. plus illus., 1978.
[CCGS 106G](#) \$15.00

Portrero Garcia and Huasteca Canyon, Northeastern Mexico. Barbara Beynon and J. L. Russell, Editors. 46 p., 1979.
[CCGS 107G](#) \$15.00

Modern Depositional Environments of Sands in South Texas. C. E. Stelling and J. L. Russell, Editors. 64 p., 1981.
[CCGS 108G](#) \$15.00

Geology of Peregrina & Novillo Canyons, Ciudad Victoria, Mexico, J. L. Russell, Ed., 23 p. plus geologic map and cross section, 1981.
[CCGS 109G](#) \$10.00

Geology of the Llano Uplift, Central Texas, and Geological Features in the Uvalde Area. Corpus Christi Geological Society Annual Spring Field Conference, May 7-9, 1982. Various paginated. 115 p., 53 p.
[CCGS 110G](#) \$15.00

Structure and Mesozoic Stratigraphy of Northeast Mexico, prepared by numerous authors, variously paginated. 76 p., 38 p., 1984.
[CCGS 111G](#) \$15.00

Geology of the Big Bend National Park, Texas, by C. A. Berkebille. 26 p., 1984.
[CCGS 112G](#) \$12.00

GEO LINK POST

<http://www.lib.utexas.edu/books/landsapes/index.php> Free service. Rare, fragile, hard-to-find, public domain documents covering various topics about the landscape of Texas. Includes the Texas Geological Survey from 1887 until 1894.

USGS TAPESTRY OF TIME AND TERRAIN <http://tapestry.usgs.gov> The CCGS is donating to all of the 5th and 6th grade schools in the Coastal Bend. Check it out--it is a spectacular map. You might want to frame one for your own office. The one in my office has glass and a metal frame, and It cost \$400 and it does not look as good as the ones we are giving to the schools.

FREE TEXAS TOPOS'S <http://www.tnris.state.tx.us/digital.htm> these are TIFF files from your state government that can be downloaded and printed. You can ad them to SMT by converting them first in Globalmapper. Other digital data as well.

FREE NATIONAL TOPO'S [http://store.usgs.gov/b2c_usgs/b2c/start/\(xcm=r3standardpitrex_prd\)/do](http://store.usgs.gov/b2c_usgs/b2c/start/(xcm=r3standardpitrex_prd)/do) go to this webpage and look on the extreme right side to the box titled TOPO MAPS DOWNLOAD TOPO MAPS FREE.

<http://www.geographynetwork.com/> Go here and try their top 5 map services. My favorite is 'USGS Elevation Date.' Zoom in on your favorite places and see great shaded relief images. One of my favorites is the Great Sand Dunes National Park in south central Colorado. Nice Dunes.

<http://antwrp.gsfc.nasa.gov/apod/asropix.html> Astronomy picture of the day--awesome. I click this page everyday.

<http://www.spacimaging.com/gallery/ioweek/iow.htm> Amazing satellite images. Check out the gallery.

<http://www.ngdc.noaa.gov/seg/topo/globegal.shtml> More great maps to share with kids and students.

www.ccgeo.org Don't forget we have our own we page.

<http://terra.nasa.gov/gallery/> Great satellite images of Earth.

www.ermaper.com They have a great free downloadable viewer for TIFF and other graphic files called ER Viewer.

<http://terrasrver.com> Go here to download free aerial photo images that can be plotted under your digital land and well data. Images down to 1 meter resolution, searchable by Lat Long coordinate. Useful for resolving well location questions.

TYPE LOGS OF SOUTH TEXAS FIELDS by Corpus Christi Geological Society

NEW (2019)TYPE LOGS IN RED;

lost now found

ARANSAS COUNTY

Aransas Pass/McCampbell Deep
Bartell Pass
Blackjack
Burgentine Lake
Copano Bay, South
Estes Cove
Fulton Beach
Goose Island
Half Moon Reef
Nine Mile Point
Rockport, West
St. Charles
Tally Island
Tract 831-G.O.M. (offshore)
Virginia

BEE COUNTY

Caesar
Mosca
Nomanna
Orangedale(2)
Ray-Wilcox
San Domingo
Tulsita Wilcox
Strauch_Wilcox

BROOKS COUNTY

Ann Mag
Boedecker
Cage Ranch
Encintas
ERF
Gyp Hill
Gyp Hill West
Loma Blanca
Mariposa
Mills Bennett
Pita
Tio Ayola
Tres Encinos

CALHOUN COUNTY

Appling
Coloma Creek, North
Heyser
Lavaca Bay
Long Mott
Magnolia Beach
Mosquito Point
Olivia
Panther Reef
Powderhorn
Seadrift, N.W.
Steamboat Pass
Webb Point
S.E. Zoller
CAMERON COUNTY
Holly Beach
Luffles
San Martin (2)
Three Islands, East

Vista Del Mar

COLORADO COUNTY

E. Ramsey
Graceland N. Fault Blk
Graceland S. Fault Blk

DEWITT COUNTY

Anna Barre
Cook
Nordheim

Smith Creek
Warmesley
Yorktown, South

DUVAL COUNTY

DCR-49
Four Seasons
Good Friday
Hagist Ranch
Herbst

Loma Novia
Petrox
Seven Sisters

Seventy Six, South
Starr Bright, West

GOLIAD COUNTY

Berclair
North Blanconia
Bombs
Boyce
Cabeza Creek, South
Goliad, West

St Armo

Terrell Point

HIDALGO COUNTY

Alamo/Donna
Donna
Edinburg, West
Flores-Jeffress
Foy
Hidalgo

LA Blanca

McAllen& Pharr

McAllen Ranch

Mercedes

Monte Christo, North

Penitas

San Fordyce

San Carlos

San Salvador

S. Santallana

Shary

Tabasco

Weslaco, North

Weslaco, South

JACKSON COUNTY

Carancahua Creek
Francitas
Ganado & Ganado Deep
LaWard, North
Little Kentucky

Maurbro

StewartSwan Lake

Swan Lake, East

Texana, North

West Ranch

JIM HOGG COUNTY

Chaparosa

Thompsonville,N.E.

JIM WELLS COUNTY

Freeborn
Hoelscher
Palito Blanco
Wade City

KARNES COUNTY

Burnell
Coy City
Person

Runge

KENEDY COUNTY

Candelaria
Julian
Julian, North
Laguna Madre

Rita

Stillman

KLEBERG COUNTY

Alazan
Alazan, North
Big Caesar
Borregos

Chevron (offshore)

Laguna Larga

Seeligson

Sprint (offshore)

LA SALLE COUNTY

Pearsall

HAWKVILLE:EAGLEFORD

LAVACA COUNTY

Hallettsville

Hope

Southwest Speaks

Southwest Speaks Deep

LIVE OAK COUNTY

Atkinson

Braslau

Chapa

Clayton

Dunn

Harris

Houdman

Kittie West-Salt Creek

Lucille

Sierra Vista

Tom Lyne

White Creek

White Creek, East

MATAGORDA COUNTY

Collegeport

MCMULLEN COUNTY

Arnold-Weldon

Brazil

Devil's Waterhole

Hostetter

Hostetter, North

NUECES COUNTY

Agua Dulce (3)

Arnold-David

Arnold-David, North

Baldwin Deep

Calallen

Chapman Ranch

Corpus Christi, N.W.

Corpus Christi West C.C.

Encinal Channel

Flour Bluff/Flour Bluff, East

GOM St 9045(offshore)

Indian Point

Mustang Island

Mustang Island, West

Mustang Island St.
889S(offshore)

Nueces Bay/Nueces Bay
West

Perro Rojo

Pita Island

Ramada

Redfish Bay

Riverside

Riverside, South

Saxet

Shield

Stedman Island

Turkey Creek

REFUGIO COUNTY

Bonnieview/Packery Flats

Greta

La Rosa

Lake Pasture

Refugio, New

Tom O'Connor

SAN PATRICIO COUNTY

Angelita East

Commonwealth

Encino

Enos Cooper

Geronimo

Harvey

Hiberia

Hodges

Mathis, East

McC Campbell Deep/Aransas Pass

Midway

Midway, North

Odem

Plymouth

Portilla (2)

Taft

Taft, East

White Point, East

STARR COUNTY

El Tanque

Garcia

Hinde

La Reforma, S.W.

Lyda

Ricaby

Rincon

Rincon, North

Ross

San Roman

Sun

Yturria

VICTORIA COUNTY

Helen Gohike, S.W.

Keeran, North

Marcado Creek

McFaddin

Meyersville

Placedo

WEBB COUNTY

Aquilares/Glen Martin

Big Cowboy

Bruni, S.E.

Cabezon

Carr Lobo

Davis

Hirsch

Juanita

Las Tiendas

Nicholson

O'Ham

Olmitos

Tom Walsh

WHARTON COUNTY

Black Owl

WILLACY COUNTY

Chile Vieja

La Sal Vieja

Paso Real

Tenerias

Willamar

ZAPATA COUNTY

Benavides

Davis, South

Jennings/Jennings, West

Lopeno

M&F

Pok-A-Dot

ZAVALA COUNTY

El Bano

Call Coastal Bend Geological Library, Letty: 361-883-2736
1 log – \$10 each, 5-10 logs \$9 each and 10 + logs \$8.00 each – plus postage

TOG Exploration LLC

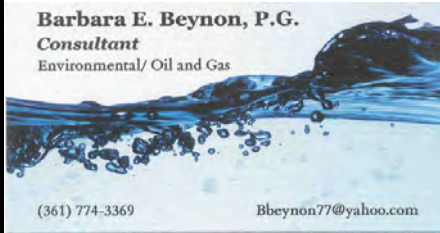
David Becker
Geologist
800 Leopard St. Ste 706
Corpus Christi, TX 78401

dkbecker1137@sbcglobal.net

361-884-3613

Barbara E. Beynon, P.G.

Consultant
Environmental/ Oil and Gas



(361) 774-3369

Bbeynon77@yahoo.com



Dawn S. Bissell
Geoscientist

Advent Geoscience Consulting, LLC
Corpus Christi, TX 78411

Phone: 361-960-2151
Email: bissells@swbell.net

RANDY BISSELL

MOTORSPORT / PHOTOGRAPHY / EARTH SCIENCE

CELL/TEXT: (361) 816-4920
BISSELLR@SWBELL.NET
253 CIRCLE DR., CORPUS CHRISTI TX 78411

MUD LOGGING SERVICE

WEL-LAB

Since 1961

MIKE BULLARD

(361) 221-9717 Office (361) 211-9715 Fax
(361) 522-1245 Cell P.O. Box 1011
E-Mail md_bullard@sbcglobal.net Kingsville, Tx 78363



Elizabeth Chapman
Business development/marketing

11777 Katy Freeway, Ste 570 Houston, TX 77079
office: 281.977.7432 ext 109 fax: 281.829.1788
cell: 713.817.4232 email: elizabeth@flamingoseismic.com

www.flamingoseismic.com

EVEREST RESOURCE COMPANY

TRAVIS CLARK
GEOLOGIST

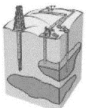
500 N. SHORELINE, SUITE 400 OFFICE: (361) 883-2831, Ext. 220
CORPUS CHRISTI, TEXAS 78401-0315 FAX: (361) 883-9628
POST OFFICE BOX 1339 EMAIL: tclark@everestcos.com
CORPUS CHRISTI, TEXAS 78403 www.everestcos.com

James L. Claughton
CONSULTING GEOLOGIST

Office (361) 887-2991
Fax (361) 883-4790
Cell (361) 960-2014
clausoie@sbcglobal.net

615 North Upper Broadway Suite 1935
Corpus Christi, Texas 78401-0779

Jim Collins
Geoscientist



361.537.4034
jim@gulfcoastgas.com

Imagine Resources, LLC

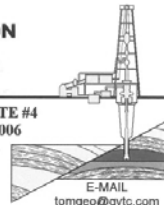
Frank G Cornish
President/Consulting Geologist

555 N. Carancahua, #1230
Corpus Christi, TX 78401
361-563-9184
frank.cornish@gmail.com

TOM DAVIDSON
GEOLOGIST

28550 IH-10 WEST SUITE #4
BOERNE, TEXAS 78006

BUS: (210) 844-8963
RES: (830) 981-5883
FAX: (830) 981-5567
CEL: (210) 844-8963



E-MAIL
tomgeo@gvvc.com

SEIMAX
TECHNOLOGIES

Sara Davis
Director of Marketing & Business Development

4805 Westway Park Blvd., Houston, TX 77041
p: 832.554.4301 d: 832.554.4314 c: 713.256.8737
sdavis@seimaxtech.com



Brian Desaulnier
Owner / President
512.923.2059
brian@gtis.us

P.O. Box 305 Office: 512.308.8200
Red Rock, TX 78662 Fax: 830.839.4832
www.geotechloggingservices.com



LEIGHTON DEVINE
Exploration Manager

p: (361) 884-8824 ext. 412 555 N. Carancahua, Suite 1230
c: (361) 510-8872 Corpus Christi, Texas 78401
ldevine@suemaur.com www.suemaur.com



Jerry C. Dewbre, P.E.
President

802 N. Carancahua Suite 1800
Corpus Christi, Texas 78401-0033

- (361) 888-7978 Office
- (361) 698-8328 Direct
- (361) 815-8477 Cell
- jerry@dewbre.com

Tommy Dubois
Geologist

2627 CR 312
Yoakum, Texas 77995

361-215-0223 tvdubois@yahoo.com



FRONTERA EXPLORATION CONSULTANTS

Geological and Geophysical Interpretation
SMT Kingdom™ Workstation

THOMAS E. EWING, PH.D.
AAPG CPG #4538; Texas Lic. Geol. #1320

19240 Redland Road, Suite 250, San Antonio, TX 78259
(210) 494-4526; (210) 824-6423 FAX
tewing@fronteraexploration.com

Since 1982



Cogito Geologic
Mark T. Ford, PhD
Consulting Services

"Solid hard rock solutions"

Mineralogy, Igneous Petrology,
Geochemistry, Field Geology

Markfordgeo@gmail.com 541-908-4739

YOUR CARD COULD BE HERE!

\$30 FOR 10 ISSUES. PRICES PRO-RATED. EMAIL ROBBY AT ROBERT.STERETT@GMAIL.COM

FOX ENVIRONMENTAL SERVICES, LLC
PLANNING | PERMITTING | REAL ESTATE MARKETING MAPS

LAURA M. FOX
LAURA@FOXENVIRONMENTALSERVICES.COM

P.O. Box 745
ROCKPORT, TEXAS 78381
361.319.3119

MATTHEW FRANEY
Consulting Geologist

AAPG CPG #6342
Texas Licensed PG #1169

FRANEY OIL OPERATIONS, INC.
545 N. Upper Broadway, Suite 403 361-563-6327
Corpus Christi, TX 78401 mfraney57@att.net

Enrique (Rick) Garza
Operation Supervisor
US Land



Rick.Garza@GlobalGeophysical.com
DIRECT +1 713-808-7428
MOBILE +1 361-701-6480
FAX +1 713-808-7928
13927 South Gessner Road
Missouri City, Texas 77489 USA
www.GlobalGeophysical.com

GISLER BROTHERS LOGGING CO., INC.

P.O. BOX 485
106 E. MAIN
RUNGE, TX 78151



Wes Gisler
Bus. (830) 239-4651
Mobile (361) 676-1369 wes@gislerbrotherslogging.com

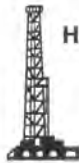


RAY GOVETT, Ph. D.
CONSULTING GEOLOGIST
361-855-0134

Robert Graham
361-774-3635

RGR ENERGY, LLC

Oil & Gas Exploration and Development
P. O. Box 1843, Corpus Christi, TX 78403
grexploration@gmail.com



HART EXPLORATION, LLC.

RICK HART
Geologist / Owner

P.O. Box 3576
Bandera, Texas 78003
Cell: 512-626-3053
Email: hartexploration@aol.com

RIVIERA EXPLORATION, LLC

H. TONY HAUGLUM
President

600 LEOPARD ST.
SUITE 1704
CORPUS CHRISTI
TEXAS 78401
PHONE 361.884.1811
FAX 361.884.8071
EMAIL THAUGLUM@SBWELL.NET



SUEMAUR EXPLORATION & PRODUCTION, LLC

BRENT F. HOPKINS
President and CEO

p: (361) 884-8824 ext. 409
c: (361) 215-4855
bhopkins@suemaur.com
555 N. Carancahua, Suite 1230
Corpus Christi, Texas 78401
www.suemaur.com

James R. Jones
Geologist

7434 Long S Drive
Corpus Christi, TX 78414
361-779-0537
jrjones5426@aol.com



EOG Resources, Inc.
539 N. Carancahua
Suite 900
Corpus Christi, TX 78401-0908
Direct: (361) 887-2681

Randy Lambert
Geological Advisor

Fax: (361) 844-1546
randy_lambert@eogresources.com



THUNDER EXPLORATION, INC.

WALTER S. LIGHT, JR.
PRESIDENT
PETROLEUM GEOLOGIST

P.O. BOX 541674
HOUSTON, TEXAS
77254-1674
US MOBILE: +713 823 8288
UK MOBILE: +44 (0)794 424 0106
EMAIL: wthunderx@aol.com



PATRICK J. McCULLOUGH [President]
patrickm@emeraldbayexp.com
311 Saratoga Boulevard Corpus Christi, Texas 78417
361.852.6195 [e] 361.852.6676 [f] 361.876.7881 [c]

CURTIS R. MAYO
GEOLOGICAL CONSULTANT

Reserve Analysis Prospect Evaluation
Expert Witness Prospect Generation

Fredericksburg, Texas 78624
Office: 830.992.2938 Cell: 830.765.0628 E-Mail: crmayo@crsc.net



VALOR EXPLORATION, LLC

Armando Medina
Owner / Geologist

8610 N. New Braunfels #703 • San Antonio, TX 78217
(210) 538-2170 • amedina@valorexploration.com



J. Mark Miller
President
Phone (361) 883-7700
Fax (361) 883-7701
mark@millersmithgas.com
545 N. Upper Broadway
Suite 400
Corpus Christi, Texas 78476

Wellhead Gas Marketing



www.lmk.com

Mark Mixon
Account Manager

mmixon@lmk.com
P: +1 281 495 5557
D: +1 281 848 3310
C: +1 713 419 8918
F: +1 281 879 0135

LMK Resources Inc.
5051 North Course Drive, Suite 300,
Houston, TX 77072, USA



Dennis O. Moore
Sr. Account Manager
Log Analyst
Permian Wireline Services

O 432-685-8965
M 432-215-1899
dennis.moore@bhge.com
6 Desta Dr
Suite 5300
Midland, TX 79705

YOUR CARD COULD BE HERE!
\$30 FOR 10 ISSUES. PRICES PRO-RATED. EMAIL ROBBY AT ROBERT.STERETT@GMAIL.COM

Mailing Address
615 Leopard, Ste. 640
Corpus Christi, Texas 78401-0641
361.882.7888 phone
361.882.7889 fax
361.946.2581 mobile

Contact Address
1701 Southwest Parkway, Ste. 109
College Station, Texas 77840
866.946.2581 phone
866.946.2580 fax

pmueller@maelrexp.com
www.maelrexp.com



J. Paul Mueller, Jr.
President



Daniel J. Neuberger
Geologist and President

Austin Office:
712 Windsong Trail
West Lake Hills, Texas 78746

Office (361) 548-7723
Home (512) 306-1223
dan@neuoilandgas.com

Patrick Nye
President
patrick@nyexp.us

Office: (361) 462-1436
Cell: (361) 658-1089
Res: (361) 238-2146



892 N. Carancahua, Suite 127B
Front Beach Plaza
Corpus Christi, TX 78401
www.nyexp.us

BRIAN E. O'BRIEN
BEO INVESTMENTS, LTD.

510 Bering Dr.
Suite 600
Houston, Tx. 77057

E-mail: bobrien@saxpetroleum.com

Office: 713-783-4883
Home: 713-784-7911
Cell: 713-899-5164



Ken Orlaska
Account Manager

281-497-8440
Direct: 281-249-5051
Fax: 281-556-8096
Cell: 832-455-1818
e-mail: korlaska@geotrace.com
12141 Wickchester Lane, Suite 200
Houston, Texas 77079
www.geotrace.com



**Herradura
Petroleum, Inc.**
JEFF OSBORN
Geologist

711 N. Carancahua, Ste. 1750
Corpus Christi, Texas 78475
e-mail: jeff@herradurapetroleum.com

Office: 361-884-6886
Fax: 361-884-9102
Cell: 361-537-2349

Richard M. Parker
Consulting Geologist

Adjunct Professor - Geosciences
Texas A&M University - Kingsville
Registered State of Texas Board of Professional Geoscientists
License # 6056

12802 Mas Rd.
Brookside Village, Texas 77581
Email: rmparker@sbccglobal.net
Email: Richard.Parker@tamuk.edu

713-724-4380 Cell 1
713-206-5158 Cell 2
281-412-0745 Home
361-593-4072 A&M



Beth Priddy
Geologist

361-443-5593
xterrageoconsulting@gmail.com

PO Box 796
Corpus Christi, TX 78403

Minerals Exploration and Mining
Uranium In Situ Leach

Richard M. Rathbun, Jr.
Certified Professional Geologist 9544 / AITG

921 Barracuda Pl.
Corpus Christi, Texas 78411

(361) 903-8207
rathbunaso@msnr.com



Barry J. Rava
President

Mobile: 281-235-7507
Office: 713-621-7282

barry@icarusog.com
www.icarusog.com

P.O. Box 820253
Houston, TX 77282-0253

Deliveries
1710 S. Dairy Ashford Rd., Ste. 202
Houston, TX 77077



Wireline Services

Weatherford International Ltd.
401 E. Sonterra Blvd., Suite 1
San Antonio, Texas 78256
USA

Sam Roach
US Gulf Coast Wireline Sales

+1.210.930.7588 Direct
+1.210.930.7610 Fax
+1.210.241.2463 Mobile

sam.roach@weatherford.com
www.weatherford.com

First Rock, Inc.
RGR Production

First Rock I, LLC

Gregg Robertson

710 Buffalo St. Ste 402
Corpus Christi, TX 78401
361-884-0791

361-215-5559 - Cell
210-260-0300 - Cell
361-884-0863 - Fax
firstrockinc@msnr.com



Alvin Rowbatham
Sales, Gulf of Mexico

Main +1 713 789 7250
Direct +1 281 781 1065
Fax +1 713 789 7201
Mobile +1 832 372 2366
alvin.rowbatham@iongeo.com

2105 CityWest Blvd., Suite 900
Houston, TX 77042-2839 USA



Doug Sartoris

Exploration Geologist / Managing Partner

800 North Shoreline Blvd.
Suite 2570 South
Corpus Christi, TX 78401

Office: 361-884-1130
Cell: 361-548-1130
doug@dsxenergy.com

Robert V. Schneider, D.Sc
Geophysicist

Quantitative Geophysical Interpretation
Seismic Attributes
AVO analysis, Modeling and Inversion
Well-to-Seismic Tying
Seismic Processing QC

Kingdom Suite
Hampson-Russell
Paradise
Insight Earth

rvschneiderdsc@gmail.com
Mobile: +1 713.447.2381

www.linkedin.com/in/RobertVSchneider

TOM SELMAN
selmanlog.com
tselman@selmanlog.com

Ofc. (432) 563-0084
Direct (800) 578-1006
Cell (432) 288-2259



GEOLOGICAL CONSULTING / SURFACE LOGGING SERVICES

P.O. Box 61150
Midland, TX 79711

4833 Saratoga #624
Corpus Christi, TX 78413

P.O. Box 2993
Rock Springs, WY 82902



Petrophysics, Inc.
Velocity Surveys • Synthetics • Sonic Log Data

P.O. Box 863323
Plano, Texas 75086

713.560.9733
jsmith@petrophysics.com
www.petrophysics.com

Joe H. Smith
President

Crossroads Exploration
Gloria D. Sprague
Geologist

388 CR 4012
Timpson, Texas 75975

Office: 936-254-3600
Mobile: 936-488-9428

gsprague4532@att.net

YOUR CARD COULD BE HERE!

\$30 FOR 10 ISSUES. PRICES PRO-RATED. EMAIL ROBBY AT ROBERT.STERETT@GMAIL.COM

DAHCO EXPLORATION, LLC

ROBBY STERETT
GEOLOGIST

P.O. Box 907
CORPUS CHRISTI, TEXAS 78403

Office (361) 887-2981
Cell (361) 739-5618
EMAIL RSTERETT@DAHCO.US

Charles A. Sternbach, Ph.D
President

Star Creek Energy Company
Oil and Gas Exploration

800 Wilcrest Drive, Suite 230
Houston, Texas 77042
office: 281.679.7333
cell: 832.567.7333
carbodude@gmail.com



www.starcreekenergy.com

THOMAS W. SWINBANK
CERTIFIED PETROLEUM GEOLOGIST
PRESIDENT

STRIKE OIL & MINERALS CORP.
P.O. Box 1339
GEORGETOWN, TEXAS 78627

PHONE/FAX 512.863.7519
HOME 512.863.7909
CELL 512.876.8988

Dennis A. Taylor
President and Chief Geologist
dennis@amshore.com



AMSHORE SHORELINE, INC.

AMSHORE US WIND, LLC
802 N. Carancahua Street, Suite 1250
Corpus Christi, Texas 78401-0019
www.amshore.com

Off: (361) 888-4496
Fax: (361) 888-4588
Direct Line: (361) 844-6728
Cell: (972) 672-9916

Environmental *Exploration & Production*

JEANIE TIMMERMANN
GEOSCIENTIST
TX LICENSE #2289

7214 Everhart #9 (361) 991-7451
Corpus Christi, TX 78413 jtimmermann74@msn.com

Jim Travillo
Consulting Petroleum Geoscientist

Exploration - Development - Acquisitions - Divestitures

2006 Highlands Circle
Oxford, MS 38655

Cell: 713.823.9332
email: jatravill@aol.com



WILLIAM A. WALKER, JR.
Certified Petroleum Geologist
lwalker@stalkerenergy.com

1717 West 6th Street, Ste. 230 • Austin, TX 78703
2001 Kirby Dr., Ste. 950 • Houston, TX 77019

Austin
512.457.8711
cell: 512.217.5192
fax: 512.457.8717

Houston
713.522.2733
cell: 512.217.5192
fax: 713.522.2879

SEBASTIAN P. WIEDMANN
GEOSCIENTIST

WILSON PLAZA WEST
606 N. CARANCAHUA, SUITE 500
CORPUS CHRISTI, TEXAS 78401 MOBILE (361) 946-4430
swiedmann.geo@gmail.com



Dave Willis
Dawsonville, GA

Mobile +1 713 789 7260
Home +1 281 781 1035
Mobile +1 281 543 6189
Fax +1 713 789 7201
dave.willis@iongeo.com

2105 CityWest Blvd. Suite 900
Houston, TX 77042-2839 USA

ROLF WOODS
Exploration Geologist



500 N. Water St., Ste. 1100S — CORPUS CHRISTI, TX 78401-0236
Work: (361) 883-7464 • Fax: (361) 883-3244 • Cell: (361) 947-9200
e-mail: rwwoods@gmail.com

YOUR CARD COULD BE HERE!
\$30 FOR 10 ISSUES. PRICES PRO-RATED. EMAIL ROBBY AT ROBERT.STERETT@GMAIL.COM



MILLENNIUM
PETROCAPITAL CORPORATION

www.millenniumpetrocapital.com

SEEKING DEALS

- 3-D Seismic Based Prospects in the Gulf Coast Region of Texas
- Conventional or Tight Oil Sands Only
- Leased or Unleased
- Operations Preferred



The Millennium family of companies are a privately held oil and natural gas exploration and production enterprise founded in 2006 and are headquartered in San Antonio, Texas.

Geographically focused, Millennium specializes in developing and producing reserves in the Gulf Coast regions of Texas. Our team aggressively pursues large working interest positions with operations in prospects with strong geological merit, well control and reliable seismic interpretations.

To present your prospect for consideration, please email a summary and/or any associated confidentiality documents to our exploration team:

geology@millenniumpetrocapital.com