

BULLETIN

CORPUS CHRISTI GEOLOGICAL SOCIETY



and

COASTAL BEND GEOPHYSICAL SOCIETY



April
2014

ISSN 0739-5620

American Shoreline, Inc.



Specializing in
Oil & Gas Exploration
& Wind Energy

Compliments of

Paul Strunk, President

Jena Nelson, VP Finance & Administration

Dennis Taylor, VP Geology

802 N. Carancahua
Frost Bank Plaza, Suite 1250
Corpus Christi, Texas 78401
(361) 888-4496

www.amshore.com



PASSION FOR TEXAS

Exceeding expectations for 80 years.

- Covering 3,000 square miles of Texas with our multi-client seismic library
- Increasing seismic productivity and quality with **UNITE** cableless recording and advanced vibroseis acquisition
- Improving subsurface resolution with advanced subsurface imaging
- Maximizing recovery with high-end reservoir characterization technology and services from **Hampson-Russell** and **Jason**
- De-risking with additional multi-client library products including gravity, magnetic and geological studies
- Storing and transforming your data into knowledge with Data Management Services

cgg.com/texas





CORPUS CHRISTI GEOLOGICAL SOCIETY

P.O. BOX 1068 * C.C. TX. 78403

2013-2014

www.ccgeo.org

OFFICERS

President	Bob Critchlow	361-882-3046	bcritchlow@virtexoperating.com
President Elect	Leighton Devine	361-510-8872	ldevine@stx.rr.com
Vice President	Beth Priday	361-882-3046	bpriday@virtexoperating.com
Secretary	Allison Corcoran	361-888-8288	allison@aaoperating.com
Treasurer	Zachary Corcoran	361-658-5850	zcorcoran1982@gmail.com
Past President	Dennis Taylor	972-672-9916	dennis@amshore.com
Councilor I	Rick Paige	361-884-8824	rickp@suemaur.com
Councilor II	Mike Lucente	361-883-0923	mikel@Impexploration.com

AAPG DELEGATES

2006-13	Dennis Moore	361-883-1516	dennis.moore@bakeratlas.com
2011-13	Frank Cornish	361-883-0923	frank.cornish@gmail.com

EDITORS

Bulletin Editor	Marian Wiedmann	361-855-2542	wiedgulf@aol.com
Bulletin Tech. Editor	Lauren Rosson	361-742-7252	lrosson@virtexoperating.com
Web Master	Chris Davis	361-537-1508	cdavis@spurfire.com

GEOLOGICAL SOCIETY COMMITTEES & CHAIRPERSONS

Advertising	Sara Miller	361-887-2691	ads@ccgeo.org
Business Cards	Christian Dohse	361-877-3431	christian.dohse@gmail.com
Arrangements	Allison Corcoran	361-888-8288	arrangements@ccgeo.org
Bloodmobile	Mike Lucente	361-883-0923	mikel@Impexploration.com
Earth Day	Alan Costello	361-888-4792	acostello@royalcctx.com
Continuing Ed. Education & Scholarship	Stephen Thomas Dawn Bissell	361-888-8880 361-960-2151	bissells@swbell.net
Fishing Tournament	Ed Egger	361-882-8400	edegger@3dimaging.net
History	Ray Govett	361-855-0134	raywg@hotmail.com
Membership	Randall Bissell	361-816-4920	membership@ccgeo.org

Shrimp Boil	David Kirk	361-774-1136	dkirk@rivieraproduction.com
Type Logs	Frank Cornish	361-883-0923	frank.cornish@gmail.com
University Liaison	Zach Corcoran	361-902-2857	zcorcoran1982@gmail.com



**COASTAL BEND GEOPHYSICAL SOCIETY
P.O. BOX 2741 * C.C. TX. 78403
2013-2014**

OFFICERS

President	Lonnie Blake	361-883-2831	lonnie_blake@eogresources.com
Vice President	Tom Long	361-698-6063	tom@sevenis.com
Secretary/ Treasurer	Matt Hammer	361-888-4792	mhammer@royalcctx.com

COMMITTEES AND CHAIRPERSONS

Membership	Randall Bissell	361-816-4920	randyb@headington.com
Golf Chairman	Ed Egger	361-882-8400	edegger@3dimaging.net
Scholarship/ Chairman	Ed Egger	361-882-8400	edegger@3dimaging.net

**Visit the geological
Web site at
www.ccgeo.org**

TABLE OF CONTENTS

Officers, Committees, and Chairpersons, CCGS, CBGS.....	2 & 3
Blood Drive.....	5
Calendar of Meetings and Events.....	6 & 7
CCGS President's Letter.....	8
CBGS President's Letter.....	10
Luncheon Meeting Announcement.....	13
Corpus Christi Geological Society Officers for 2014-2015.....	29
Geo Link Post.....	37
Type Logs of South Texas Fields.....	38
Order OIL MEN DVD.....	39
Wooden Rigs--Iron Men.....	40
Professional Directory.....	41

*****BLOOD DRIVE*****

THE BLOODMOBILE – IN APRIL, 2014
WILL BE AT SOME CONVENIENT LOCATIONS
PLEASE CALL 855-4943 for those locations or see below

.....

ATTENTION!!!

We spoke to the Blood Center about locating us on their computers. They have us listed as C.C. Geological Society. Our number with them is 4254 & it would be helpful if you can give them that number also.

Thanks! Mike Lucente

.....

**FOR CURRENT SCHEDULES & LOCATIONS OF THE
BLOODMOBILES YOU CAN LOG ON TO:**

www.coastalbendbloodcenter.com



*When you're running through those April showers --
Zoom on over to the Bloodmobile!!
Please Donate your Blood!!
You'll be glad you did!*

.....

CCGS/CBGS JOINT MEETING SCHEDULE 2013-2014

September 2013							October 2013							November 2013							
S	M	T	W	Th	F	S	S	M	T	W	Th	F	S	S	M	T	W	Th	F	S	
1	2	3	4	5	6	7			1	2	3	4	5							1	2
8	9	10	11	12	13	14	6	7	8	9	10	11	12	3	4	5	6	7	8	9	
15	16	17	18	19	20	21	13	14	15	16	17	18	19	10	11	12	13	14	15	16	
22	23	24	25	26	27	28	20	21	22	23	24	25	26	17	18	19	20	21	22	23	
29	30						27	28	29	30	31			24	25	26	27	28	29	30	

Sept. 12, 2013
5:30p.m.—8:00p.m.
Kickoff BBQ—The Bar-B-Q
Man Patio Cantina

Oct. 16,—11:30a.m.—1:00p.m.
Speaker: Jamie Rich—Professor
Univ. of Ok. “Unconventional
Geophysics: Unique Approaches
For Unique Problems

Nov. 20—11:30a.m.—1:00p.m.
Speaker: Hongliu Zeng--
Bureau of Economic Geology
“Stratal slice: The next
generation”

December 2013							January 2014							February 2014						
S	M	T	W	Th	F	S	S	M	T	W	Th	F	S	S	M	T	W	Th	F	S
1	2	3	4	5	6	7				1	2	3	4	1	2	3	4	5	7	8
8	9	10	11	12	13	14	5	6	7	8	9	10	11	9	10	11	12	13	14	15
15	16	17	18	19	20	21	12	13	14	15	16	17	18	16	17	18	19	20	21	22
22	23	24	25	26	27	28	19	20	21	22	23	24	25	23	24	25	26	27	28	
29	30	31					26	27	28	29	30	31								

Dec. 18—11:30a.m.—1:00p.m.
Speaker: Eddie Valek, Marathon
“From 0-80 in Ninety Days: Rapid
Play Entry to Fully Integrated
Play Development in the Eagle
Ford Trent, South-Central TX.”

Jan. 15—11:30a.m.—1:00p.m.
Speaker: Kevin Schepel, ZaZa Corp.
“Advanced Reservoir
Characterization for Proof-of-
Concept Drilling in the Eagle
Ford and Eaglebine Shales”

Feb. 19—11:30a.m.—1:00p.m.
Speaker: J. Carl Fiduk, Western
Geco, “A Brief Tectonic and
Depositional History of the
Northern GOM “

CCGS/CBGS JOINT MEETING SCHEDULE 2013-2014

March 2014							April 2014							May 2014						
S	M	T	W	Th	F	S	S	M	T	W	Th	F	S	S	M	T	W	Th	F	S
						1			1	2	3	4	5					1	2	3
2	3	4	5	6	7	8	6	7	8	9	10	11	12	4	5	6	7	8	9	10
9	10	11	12	13	14	15	13	14	15	16	17	18	19	11	12	13	14	15	16	17
16	17	18	19	20	21	22	20	21	22	23	24	25	26	18	19	20	21	22	23	24
23	24	25	26	27	28	29	27	28	29	30				25	26	27	28	29	30	31
30	31																			

March 19—11:30a.m. 1:00p.m.
Speaker: Richard Davis (Harte
Research Institute) “Sea-Level
Change in the Gulf of Mexico”

April 16—11:30a.m.-1:00p.m.
Speaker: Robert C. Schoup
(Subsurface Consultants &
Associates) “What are Global
Temperatures Doing & Why
Are They Doing It?”

May 21—11:30a.m. 1:00p.m.
Speaker: Dr. Peter R. Rose—
“Geology Impacts History:
Influence of the Edwards
Plateau on Frontier History
of the Texas Hill Country”

Calendar of Meetings and Events Calendar of Area Monthly Meetings

Corpus Christi Geological/Geophysical Society.....	Third Wed.—11:30a.m.
SIPES Corpus Christi Luncheons.....	Last Tuesday—11:30a.m.
South Texas Geological Society Luncheons.....	Second Wed—noon San Antonio
San Antonio Geophysical Society Meetings.....	Fourth Tuesday
Austin Geological Society.....	First Monday
Austin Chapter of SIPES.....	First Thursday
Houston Geological Society Luncheons.....	Last Wednesday
Central Texas Section of Society of Mining, Metallurgy & Exp.....	2 nd Tues every other month In San Antonio



CCGS President's Letter

The luncheon meeting speaker this month at the Town Club (Wed. April 16) will be Robert Shoup, Subsurface Consultants and Associates. His topic will be "What Are Global Temperatures Doing, and Why Are They Doing It?"

The Board voted on March 5 to give Complimentary Memberships to the following dedicated volunteers of the CCGS that have given their time to the society but do not qualify for the other categories of membership:

Dorothy Jordan – Membership Committee
Marian Wiedmann – Bulletin Editor
Linda & Jerrold Simpson – Bones in Schools
Dinah Bowman – Ice Age Mural

The CCGS documentary, "Oilmen: Tales from the South Texas Oil Patch" was shown to the San Antonio TV station KLRN audience on March 5, 2014. The movie was the largest revenue grossing film in the history of Corpus Christi based TV station KEDT.

CCGS events for April and July:

- | | | |
|------------|------------------------------|---|
| • April 12 | Earth Day | Heritage Park |
| • April 24 | CCGS/CBGS Shrimp Boil | Art Center |
| • April 25 | Seismic Interpretation Class | EOG 3 rd floor conference room |
| • July 25 | CCGS/CBGS Fishing Tournament | Port Aransas |

Nominations for CCGS officers for the 2014-15 year are still open. If you want to run for an office or know someone that may want to run for office, please let me know. We currently have candidates running for the following positions:

President	Leighton Devine
President-Elect	Open
Vice-President	Randy Bissell
Secretary	Allison Corcoran
Treasurer	Zach Corcoran

The officer election will be held at the April Meeting.

Bob Critchlow
CCGS President 2013 – 2014

SPONSORS

**Serving The Oil & Gas Industry On The Texas Coast
For More Than 30 Years**



- ◆ Pre-lease Environmental Constraints Analysis
- ◆ Seismic Permitting and Bio-monitoring
- ◆ Access Evaluations on Land, Bays and Wetland Areas
- ◆ Corps of Engineers Permitting for Seismic, Access, Drill Sites, Production Facilities and Pipelines
- ◆ Federal Refuge and Padre Island National Seashore Permitting
- ◆ Endangered Species, Seagrass, Wetland and Oyster Surveys
- ◆ Wind Farm Permitting

Sandy Belaire, Owner/President
Charlie Belaire, VP
cell: (713) 557-4083

phone: (361) 729-2948 fax: (361) 729-2970
email: estuary123@aol.com
www.belaireenv.com

WELLSITE GEOSCIENCE SERVICES



**When time is money,
Wellsite Geoscience is
money well spent.**

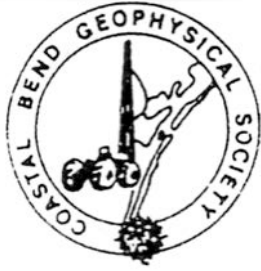
Whether you're exploring a basin, producing a well or completing a shale play, time is money. That's why Weatherford Laboratories brings a suite of formation evaluation technologies right to the wellsite. Utilizing mud gas and cuttings, these technologies provide detailed data on gas composition, organic richness, mineralogy and chemostratigraphy in near real time. As a result, operators now have an invaluable tool to assist with sweet spot identification, wellbore positioning, completion design and hydraulic fracturing. We call it Science At the WellSite. You'll call it money well spent.

SCIENCE AT THE WELLSITE™
www.weatherfordlabs.com

Formation Evaluation | Well Construction | Completion | Production

©2013 Weatherford. All rights reserved

 **Weatherford**
LABORATORIES



CBGS President's Letter

The Coastal Bend Geophysical Society is taking nominations/volunteers for officers. Please get in touch with Lonnie Blake, Matt Hammer, Tom Long or Ed Egger if you want to get involved in arranging talks, growing the Corpus Christi geophysical community, or the fund raising/golf tournament for our geophysics scholarship. Or if you have ideas on how CBGS should do its business!!!!

Stephen Thomas has engaged Don Herron to do a Seismic Interpretation course in Corpus Christi. Will be either April 25th or May 2nd (Exact date unknown at time of publishing). Contact Stephen Thomas or Lonnie Blake for details.

Note: International seismic crew count was down 7. US crew count was up 4. Must be a glitch/typo in the January completions from the RRC.

Seismic Crews - US Onshore	Current Month	Last Month	Difference	(Per SEG/Seismic Crew Reports Survey)
	Onshore/Offshore	Onshore/Offshore		
	49/22	67	+4	
	Current Month	Last Month	Last Year - Monthly	(Per Texas RRC, last reported)
Texas Production	MMBO/BCF	MMBO/BCF	MMBO/BCF	
Oil	55.7	54.5	43.8	
Gas	552	561	523	
	Current Month	Last Month	Last Year - Monthly	
Texas Drilling Permits	1,791	1,619	1,978	
Oil wells	515	451		
Gas wells	121	74		
Oil and Gas wells	1,086	1,002		
Other	69	92		
Total Completions	3,607	1,611	1,520	
Oil Completions	3,131	1,348	1,114	
Gas Completions	398	156	351	
Other	78	107	55	

Parting thoughts:

A twist on the "Parable of the Blind Men and the Elephant".
The impact of using the Scientific Method, teamwork and communicating.

The parable of the blind men and the elephant is often used to argue for the

validity of their beliefs. The parable is meant to show that no body knows the whole truth, therefore (apparently) no one can ever say that the teller of the parable is wrong. The problem with the parable though, is that it is only half of the story. The blind men are confused by the elephant only because all of them have different results. But, once they follow the scientific method and verify each others results, compare them, and build a model, they should eventually come up with a pretty good description of an elephant.

There were three blind men that came across an elephant. They were all unfamiliar with elephants and had no idea what this creature looked like. Lining up against the elephant, they all began to feel with their hands:

Blind Man 1: (feeling it's tail) Well, it seems to be some sort of brush.

Blind Man 2: (feeling it's abdomen) I'm getting much different results. To me it feels like a huge wall. One, are you sure it's a brush? Blind Man 1: That's what my results show.

Blind Man 2: Ok, do you mind if I verify it?

Blind Man 1: Of course, we need to be sure (the men trade places and recheck each others work). Yes, the results do seem to be the same when I run the test as well. Would you like to verify my results?

Blind Man 2: Let's see what Three is up to. Three, what results have you got?

Blind Man 3: (feeling it's trunk) it's a great rope.

Blind Man 1: Are you sure?

Blind Man 3: Oh, yeah, I've picked up on it's mystical energies

Blind Man 1: Well, we've been verifying each others results. Let's come over there and double check yours.

Blind Man 3: No! I don't need anyone to check my results. I have "Another Way of knowing"

Blind Man 1&2: Get out of the way, please

Blind Man 3: In order to say you know it's an elephant, you have to think you know everything!

Blind Man 1&2: Shut up.

--

Lonnie

SPONSORS

That old gas kick could be your next discovery!

Characterization of Unconventional Reservoirs

Traditional methods of core analysis cannot yield acceptable results when applied to unconventional reservoirs such as gas shales, tight gas sands, coals and thin bed formations.

Production controls on these reservoirs are not limited to hydrocarbons in place, permeability and porosity. Pay identification requires an understanding of complex lithologies and exotic mineralogies.

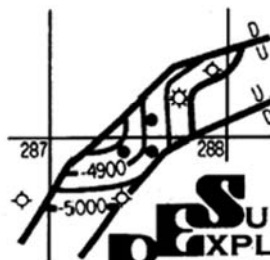
Only Core Lab offers the comprehensive range of unique technologies required to optimize your unconventional reservoirs.

Geological Petrophysical Geomechanical Geochemical



To learn more about our unique unconventional reservoir evaluation services contact Core Lab. (713) 328-2121 or (361) 289-5457 psinfo@corelab.com

© 2005 Core Laboratories. All rights reserved.



PSUEMAUR
EXPLORATION &
PRODUCTION, LLC

1000 Frost Bank Plaza
802 North Carancahua Street
Corpus Christi, TX 78470-0400
Phone: (361) 884-8824
Fax: (361) 884-9623

*Exploring Texas
since 1968*

LUNCHEON MEETING ANNOUNCEMENT

Corpus Christi Geological Society & Coastal Bend Geophysical Society

Wednesday, April 16, 2014

- Location:** The Town Club; 6th floor
- Bar Sponsor:** Sara Davis (Seismic Ventures)
- Student Sponsor:** Core Lab (Juan Cabasos) and CCGS
- Time:** 11:30 AM, Lunch served at 11:45 AM, speaker at noon
- Cost:** Members \$25 (\$3 Surcharge if no reservation, No-shows will be invoiced)
- Reservations:** Please make your reservations by email allison@aaoperating.com

What Are Global Temperatures Doing, and Why Are They Doing It?

Robert C. Shoup

Subsurface Consultants and Associates

Houston, TX

Biography

Bob Shoup is a Board Certified Petroleum Geologist with over 30 years experience in basin analysis, regional studies, new play generation, prospect evaluation, field studies and development planning, drilling operations, and project management. Bob began his career at Shell Oil in 1980; followed by four years working for private oil companies before becoming an independent consultant in 2003, consulting in Thailand, Malaysia, Vietnam, and New Zealand. A recognized expert in clastic depositional environments, rift basins, and syndepositional structural systems, Bob is a proven oil finder with a 46% exploration success rate and over 100 MMBOE discovered resources.

In addition to consulting, Bob teaches various SCA training courses in Houston, the Asia Pacific and Middle East Regions. Bob is a creative individual, both within the work and home environment. In 1994 he was a nominee for the Pulitzer Prize in drama for his play *Second Alarm*.

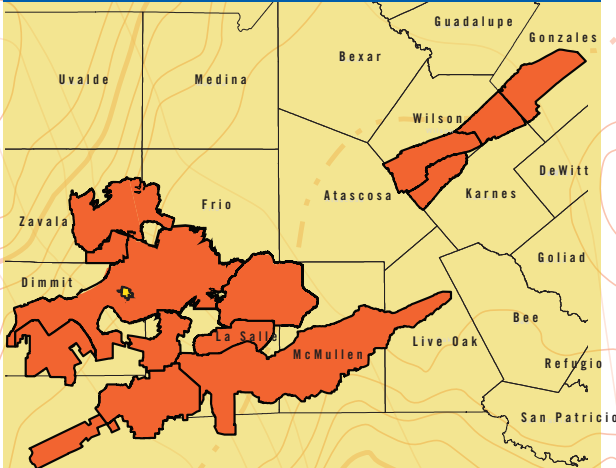
Bob is also an active contributor in the professional community. He is a Past President of Bangkok's Chapter of the South East Asia Petroleum Exploration Society and of AAPG's Division of Professional Affairs, and past Secretary-Editor of the AAPG House of Delegates. He has served on numerous AAPG Committees and was Chairman of AAPG's Mentor, Membership and Student Chapter Committees. He is a recipient of AAPG Certificates of Merit in 1990, 1991, and 1998; AAPG's Distinguished Service Award in 2000, the DPA's Distinguished Service Award in 2008, and DPA Life membership in 2010. He currently serves as an ethics lecturer for the DPA.



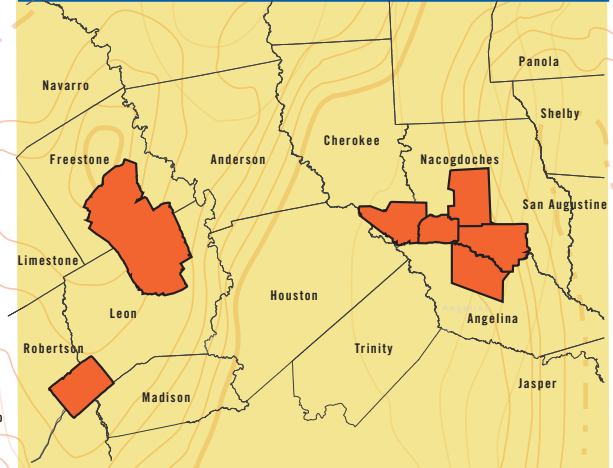
continued on page 15

TEXAS Is Hot... AGAIN!

SOUTH TEXAS



EAST TEXAS



You might think this is old news, but you'd be wrong. Our Texas Multi Client datasets are heating up! Olmos, Escondido, Pearsall, Austin Chalk, Buda, Woodbine - this data gets you so much more than just Eagle Ford. Licensing our seismic provides a multitude of opportunities for successful prospectivity and production.

And Global knows how you can optimize production and reduce cost. Global Geophysical's E&P Services integrate seismic, microseismic, well log, core, petrophysical, drilling, completions, and production data to help optimize all phases of your E&P execution in both conventional and unconventional reservoirs.

GLOBAL GEOPHYSICAL OFFERS:

- Premiere multi client seismic data library of rich azimuth, full offset Reservoir Grade (RG3D[®]) and Ultra RG3D[®] programs
- Processing and interpretation
- Unconventional Consulting[™] delivering engineering ready datasets for rock properties and reservoir characterization
- Land and shallow marine acquisition with unprecedented crew productivity using AutoSeis[®] and advanced Vibroseis techniques
- Tomographic Fracture Imaging[™] (TFI[™]) for direct mapping of fracture networks (natural and induced) and permeability pathways by Global Microseismic Services

Global Geophysical Services, Inc.

13927 S. Gessner Road • Missouri City, TX 77489

e-Mail: Shawn.Williams@global.geophysical.com

tel: +1 713-808-7359

www.globalgeophysical.com/multiclient



Extended Abstract What Are Global Temperatures Doing, and Why Are They Doing It?

R.C. Shoup

1) What are temperatures actually doing?

The answer to this question should be reasonably straightforward, but it is not. An examination of the various average temperature profiles from Mann to NASA to Hadley reveal that each one is different than the others, sometimes significantly so. One reason is that the averages that are plotted are not simply arithmetic averages. They are constructed from a subset of the total data and include extrapolated data as well as modified data.

Moreover, none of the averages look much like the majority of the raw station data. Figure 1 shows four temperature profiles, two from Texas, one from Colorado, and one from California. As you can see, they have little similarity from one to another.

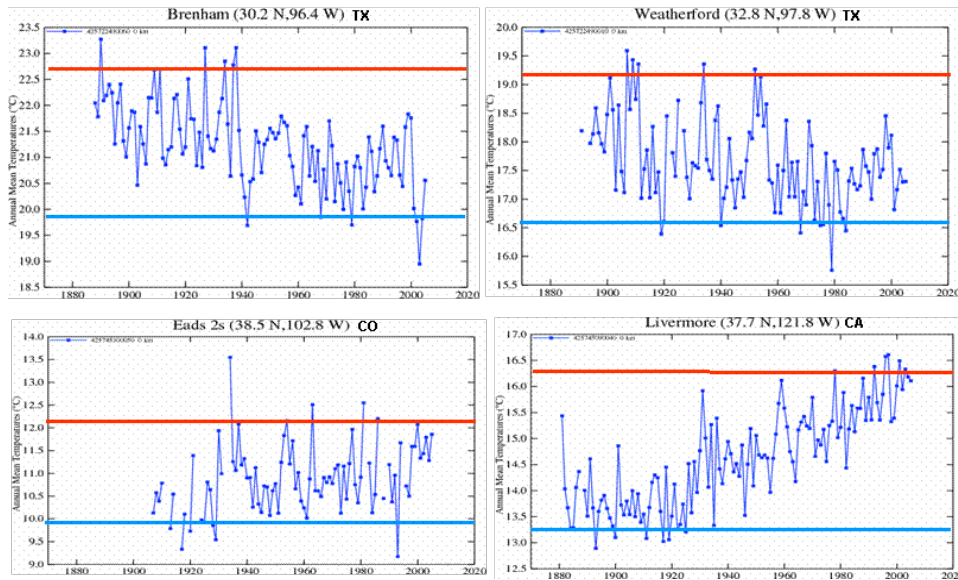


Figure 1: Surface Temperature Profiles from stations in Texas, Colorado, and California. Points above the red line are the 5 warmest years; below the blue line, the 5 coolest (NASA GISS)

These differences are a function of the fact that there is considerable regional, and for that matter, local variation in temperatures. The problem comes in developing an average temperature curve from such disparate data. It is a little like drilling an oil well, a gas well, and a dry hole then telling management that 'on average' you have a low-saturation condensate play.

All of this tends to confuse the issue. More importantly, claims based on the averages are in-fact not true for a majority of surface temperature stations. For example NASA's claim that the five warmest years worldwide since 1850 are 2005, 1998, 2002, 2003, and 2006 is not true for almost 2/3rds of the individual station data (Does Global Warming Meet the Standards of AAPG and DPA, *The Correlator*, 2007-2008 Summer Issue). In AGU's Climate Statement they claim that

continued on page 17

SPONSORS

Headington Oil Company LLC



Operating with excellence in South Texas since 1990.

902 North Tower – Bank of America Building – Corpus Christi, Texas
(361) 885-0110



Nueces Energy, Inc.

P.O. Box 252
Corpus Christi, Texas 78403
Office: (361) 884-0435
Fax: (361)-654-1436
www.nuecesland.com

Nueces Energy, Inc. is a complete land services company in the business of providing professional landmen and project management to various energy related jobs primarily in the oil and gas industry.

With over 30 years of industry experience, we specialize in determining surface and subsurface ownership and negotiating and acquiring contracts, rights of way agreements, and easements to provide our clients with the legal right to explore and develop oil and gas resources. We provide a full service land company capable of managing any project no matter how large or small.



THUNDER EXPLORATION, INC.

Celebrating 30+ years of prospect generation and exploration in the following South Texas plays and trends.

Frio	San Miguel	Edwards
Jackson	Austin Chalk	Pearsall
Yegua	Eagle Ford	Sligo
Wilcox	Buda	Cotton Valley
Olmos	Georgetown	Smackover

Thunder is currently seeking non-operated working interest participation in projects and prospects.

Contact **Walter S. Light Jr.**
President/Geologist

713.823.8288
EMAIL: wthunderx@aol.com

“as of 2006, eleven of the previous twelve years were warmer than any others since 1850.” That statement, which is based on average temperature curves, is not true for almost 3/4ths of the station data. Being the simple-minded individual that I am, I have an expectation that a plot of average temperatures should represent the majority of the data, not the minority.

That said, we need to use average temperature profiles or we would bog down in the data. There are two average temperature curves that seem to be reasonable based on my review of several hundred temperature profiles, as well as many published average profiles. The first is the NCDC/NESDIS/NOAA curve shown in Figure 2 which seems to be a reasonably good curve of short-term average temperature anomalies. The Loehle curve shown in Figure 3 seems to be a reasonably good curve for the medium-term (2000 years).

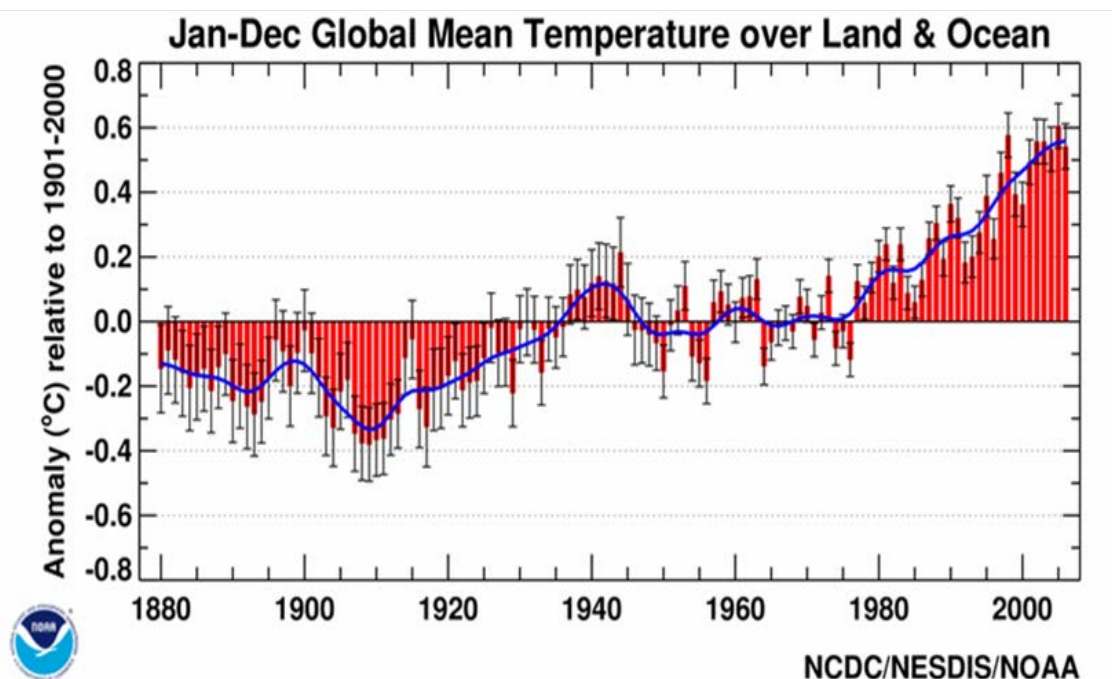


Figure 2: Jan-Dec Global Mean Temperature over Land and Ocean (NOAA)

continued on page 19

SPONSORS

Ellsworth Properties

615 N. Upper Broadway St. Suite 1910
Corpus Christi, TX 78477

Office: (361) 887-0994
Fax: (361) 887-9726
Mobile: (361) 438-5727
Toll Free: (800) 540-0994


Oil & Gas Investments

- Operating in South Texas for over 27 years.
- Multiple drilling and exploration campaigns currently in progress.
- Quality Operations Management along with state-of-the-art research and development.



Ellsworth Properties: 361.887.0994 or www.HPEOIL.com

Victor P. Smith
Oil Company, L.L.C.



Jackson, Mississippi

**Interested in Ideas and Prospects in Texas
Will Lease and Operate
Confidentiality Maintained**

Jeanne S. F. Phelps
281/398-5208 jspfhelps@yahoo.com
SIPES # 2509

CHARGER EXPLORATION

Michael L. Jones
President/Geologist

Onshore Gulf Coast Prospect Generation and Consulting

1001 McKinney Street, Suite 801 Houston, TX 77002
Ofc: 713.654.0080 Cell: 713.398.3091
Email: mjones@chargerexploration.com
www.chargerexploration.com

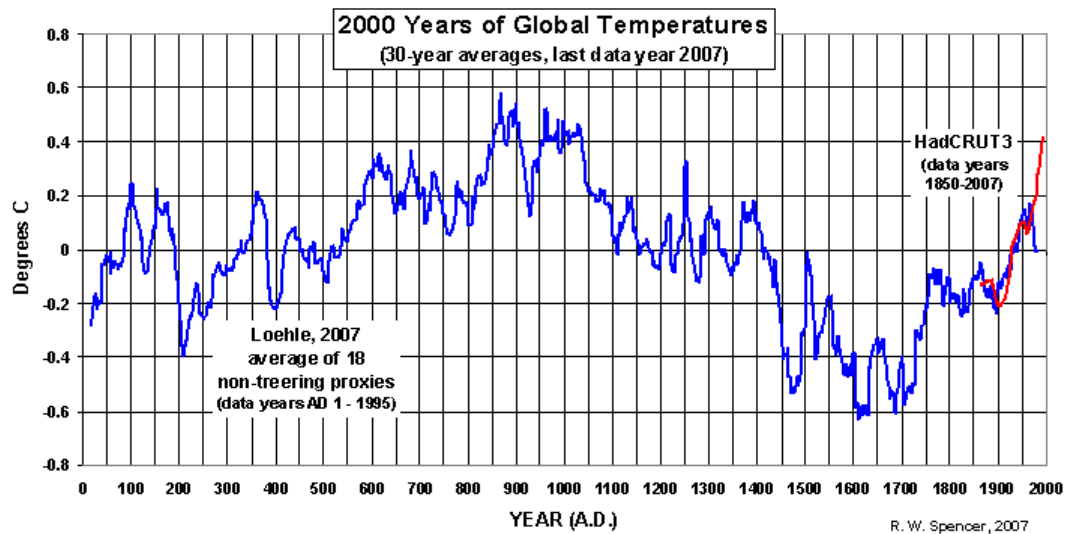


Figure 3: 2000 Years of Global Temperature (Loehle, 2007)

Based on these curves we can see that there has been a slight increase of 0.6 to 0.8 degree C since the end of the Little Ice Age in the mid 1800's; an average change of 0.009 degrees C/year. Note, however, that NOAA's curve flattens after 1998, Loehle's curve shows a temperature decline after 1998, and the Hadley curve (red line, Figure 2) continues to increase after 1998.

There is a strong indication that there is a 30 year pattern of warming and cooling superposed on the overall warming trend (Figure 2). The warming from 1850 – 1880 marked the end of the Little Ice Age (Maunder Minimum). That was followed by a strong cooling trend from 1880 to 1910, clearly seen on Figure 2. From 1910 – 1940 there was a pronounced warming trend that led to an ice-free Northwest Passage in the 1920's and the dust bowl in the 1930's. That, in turn, was followed by cooling from 1940 – 1970. Although that cooling does not look significant on Figure 2, WW2 historians will recall that 1945 was one of the coldest years on record for much of Europe. It is also the trend that led to the 1970 global cooling crisis. Our current warming trend has been going from 1970 to 2000. Since 1998, we have seen a general cooling trend which is consistent with that 30 year pattern. These 30-year trends are caused by changes in the Pacific Ocean circulation known as the Pacific Decadal Oscillation (PDO), which in turn impacts the frequency and severity of the El Nino Southern Oscillation (ENSO).

2) What is causing temperatures to do what they are doing?

I believe that many geoscientists believe that CO₂, and other greenhouse gases have an impact on climate, as do I. However, none of us know if that impact is large or small, and I suspect we will never really know given the complexity of the climate system.

However, the nature of the public debate is such that for most people, the CAUSE of global warming is CO₂ associated with the burning of fossil fuels. That is what needs to be addressed in public forums.

continued on page 21

SPONSORS



Winn Exploration Co., Inc.

Actively Seeking High Quality
Drilling Prospects

Contacts:

Mike Layman (Geophysicist)	361-844-6922
Tom Winn (Geologist)	361-844-6992
Southern Winn (Geologist)	361-844-6998

800 North Shoreline Blvd.
19th Floor, North Tower
Corpus Christi, Texas 78401

Office: 361-844-6900 Fax: 361-844-6901

A Great Place For Business

In the heart of the Business District
Broadway at Leopard

- Onsite Management
- Conference Room
- Deli & Vending Room
- Security Card Access
- High Speed Elevators
- View of Corpus Christi Bay

COMMITTED TO EXCELLENCE
Yesterday • Today • Tomorrow

The
600
BUILDING

Contact
Ellen Blasingame
698-6000

ecblasingame@netscape.net



We are all aware that temperatures have warmed and cooled frequently throughout geologic time; all without being caused by humans. We are much warmer today than we were at the end of the Pleistocene, but cooler than we were during the Medieval Maximum (Figure 3).

More recently, temperatures have been steadily rising since 1910 (Figure 1) which follows an increase in CO2 emissions (Figure 4). The logic of assigning a human cause to global warming is based on the observation that there has been a significant increase in CO2 emissions and a corresponding increase in temperatures – hence the “smoking gun”.

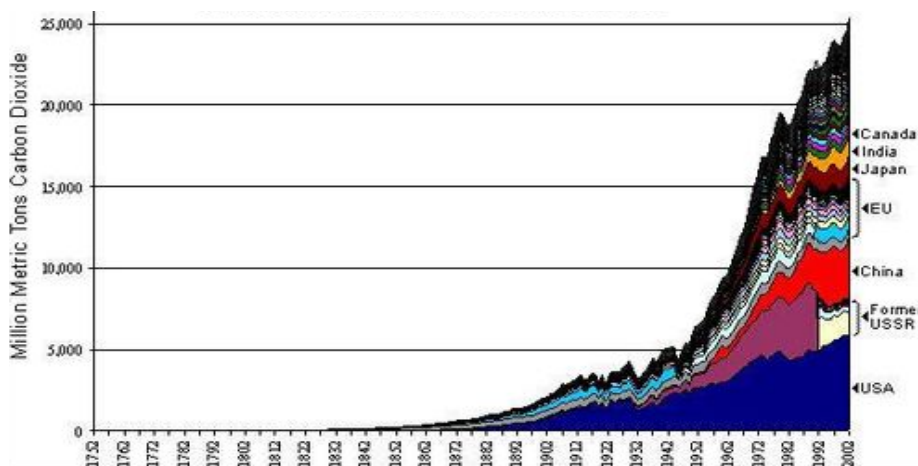


Figure 4: Global CO2 Emissions from Fossil Fuel Burning, Cement Manufacture, and Gas Flaring (CO2 Information Analysis Center)

However this logic does not hold up to scrutiny. Over the past 400,000 years, temperatures and CO2 levels have been at increased levels 5 times (Figure 5). None of the previous increases were human caused. Moreover, temperature increases precede CO2 increases by almost 800 years, so CO2 does not cause temperature increases.

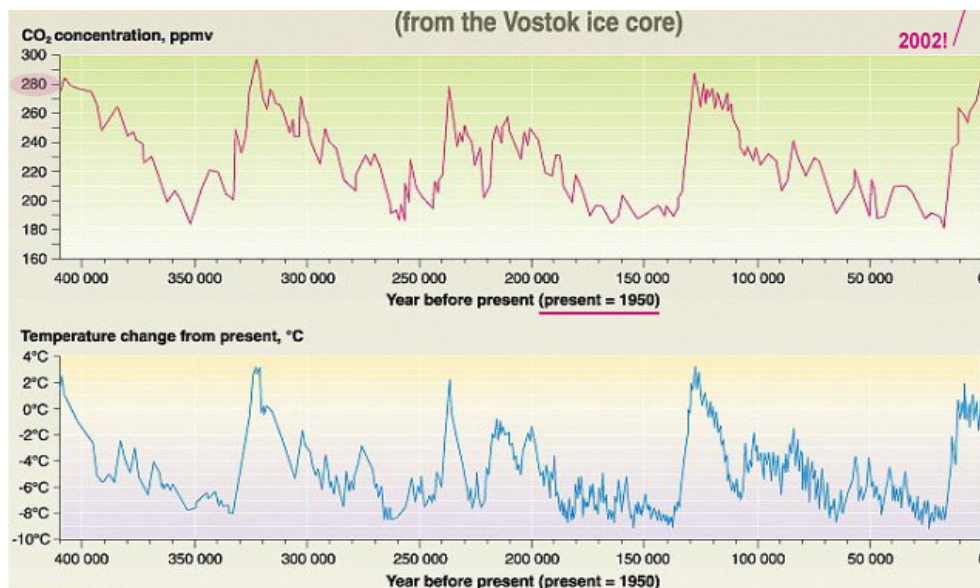


Figure 5: Temperature and atmospheric CO2 concentrations over the past 400,000 years

continued on page 23

SPONSORS

KNOWLEDGE REVEALED

PURPOSE DRIVEN

- Unrivaled land seismic acquisition capabilities
- Specific solutions for all terrains and environments (land, shallow water/transition zone and OBC)
- Purpose driven crews with proven experience around the world
- Processing and Interpretation services revealing the project knowledge you need
- Full azimuth 3D and 3C coverage in unconventional resource plays
- Multi-Client opportunities in North America, Latin America and Australasia
- Proven experience in:
 - Azimuthal anisotropy resolution and fracture identification
 - Multicomponent processing
 - AVO processing and inversion



INNOVATIVE
GEOPHYSICAL
SOLUTIONS



geokinetics.com

So the argument becomes has atmospheric CO₂ reached concentrations at which it has crossed a “tipping point” such that it is causing the current warming trend? That possibility can not be ruled out; however, the data does not seem to support that conclusion. First of all, the current warming trend can be seen to have actually started in 1700 (Figure 2), long before there was any increase in CO₂ emissions.

Secondly, the current atmospheric concentration of CO₂ is slightly less than 400 parts per million, or 0.04% of the total atmosphere. If one is to assume that four one-hundredths of a percent of atmospheric CO₂ is sufficient to have pushed our climate system across the tipping point, then one has to believe that our climate system is not at all robust. It is somewhat like assuming that 3,600 Americans living in Bangkok, a city of almost 9 million is somehow going to tip the culture to be American.

Thirdly, there has been a concerted effort over the last decade to find the greenhouse gas signature; that is an atmospheric hot-spot at approximately 10,000 feet above msl in the tropics. Although thousands of radiosondes have been launched to find this hot-spot, none have, suggesting it is not there, or is too-small to be observed.

Fourth: the effect of carbon dioxide on temperature is logarithmic and thus climate sensitivity decreases with increasing concentration. The first 20 ppm of carbon dioxide has a greater temperature effect than the next 400 ppm. The rate of annual increase in atmospheric carbon dioxide over the last 30 years has averaged 1.7 ppm. From the current level of 380 ppm, it is projected to rise to 420 ppm by 2030. The projected 40 ppm increase reduces emission from the stratosphere to space from 279.6 watts/m² to 279.2 watts/m² which equates to an increase in atmospheric temperature of 0.04°C (*The Past and Future of Climate*; David Archibald June, 2007).

The other rationale for a human cause for global warming is based on model predictions. The current models just do not work without a huge human contribution. I will not now, or ever, pretend to understand climate models. However, I do have experience with geologic models, and they require many assumptions. Some of the required assumptions are well understood, others poorly understood. But the reality is that the product of a model is only as good as the poorest assumptions in them.

So how good are the assumptions in climate models? Over the course of the last year, it has been shown that the IPCC models have unreasonable assumptions regarding economic growth, which is used as a proxy for predicting future CO₂ levels. Recent articles have indicated that the assumptions about the behavior of water vapor in the Antarctic are incorrect. And, we heard in the Climate Forum in San Antonio, that the role of solar activity is not properly handled in most models. So, as I have said before, models are great tools to help us understand complex processes, but they are not data.

continued on page 25

SPONSORS

www.**GeoSteering**.com

281-573-0500
info@geosteering.com

**Free introductory consultation
with modeling:
let us demonstrate whether
images or propagation resistivity
could add value to your well.**

Personnel with degrees & 20+ years of oilfield experience

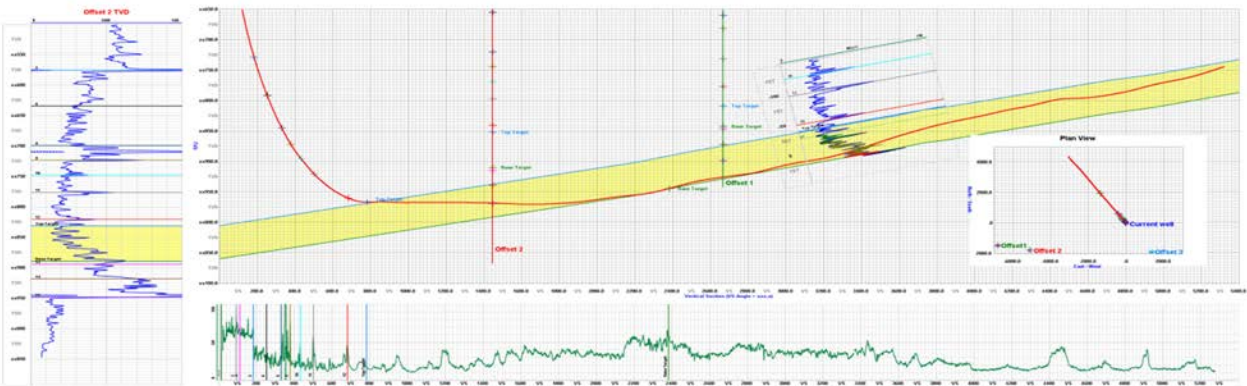
Proprietary software

TST interpretation for GR only jobs

**Image displays / interpretation for jobs with azimuthal GR,
resistivity or density**

**Resistivity modelling / interpretation for jobs with LWD
propagation resistivity**

Real-time (always)



So what is The Cause? The answer is the sun; it is THE driver of earth's climate. Changes in solar activity will change earth's climate. Oceanic circulation patterns also have an affect, in particular the thirty-year Pacific Decadal Oscillation (PDO). Other factors, *including CO2 and green-house gases* will impact climate, but they do not drive it. As earth scientists we fundamentally understand this, however, the general public does not. And the debate, as far as the public is concerned, is that CO2, not the sun and our planet's orientation to it, causes global warming.

Moreover, the impact of human-introduced CO2 has on climate appears to be minimal. It is clearly over-ridden by other factors, notably solar activity and by changes in oceanic circulation.

3) What will temperatures do?

This should be a reasonably simple issue as there are only three possibilities: temperatures will continue to generally increase, temperatures will be flat, or temperatures will begin to decrease. Of course which trend is correct will be somewhat dependent on the time-frame we choose. Choose a long enough time frame and all 3 will occur.

The IPCC and others state with a high degree of certainty that temperatures will increase. Of course now they are saying that the increase will be interrupted by a period of flat to cooling temperatures until 2015. This prediction is based largely on models – so you already know how I feel about them. If the impact of the PDO is as strong as historical data suggests that it is, then the recent movement of the PDO to its cool phase combined with the lack of sun-spot activity could indicate we are in for 30 years of cooling. The general flat temperatures seen in the data since 1998 may well indicate that this is indeed the case (Figure 6). Over the last year, we have seen a 0.6° C cooling, all but wiping out the 0.8° C increase we have seen since the 1800's.

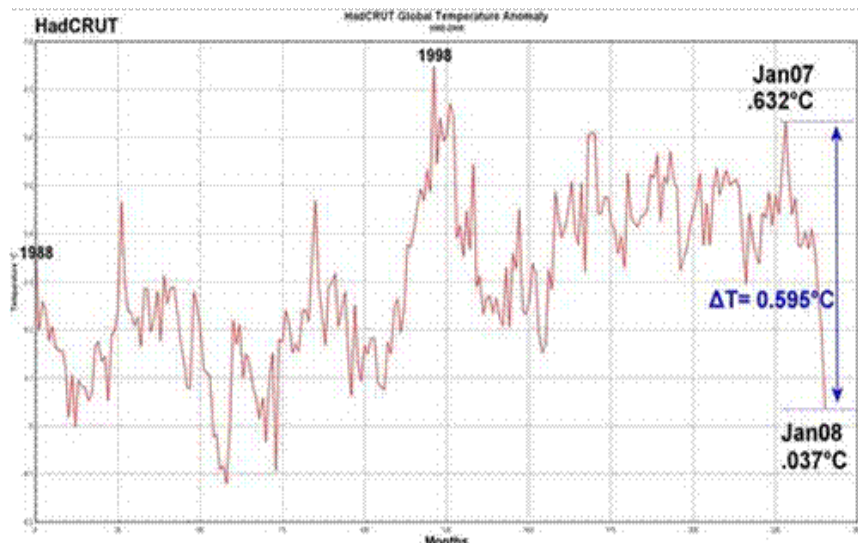
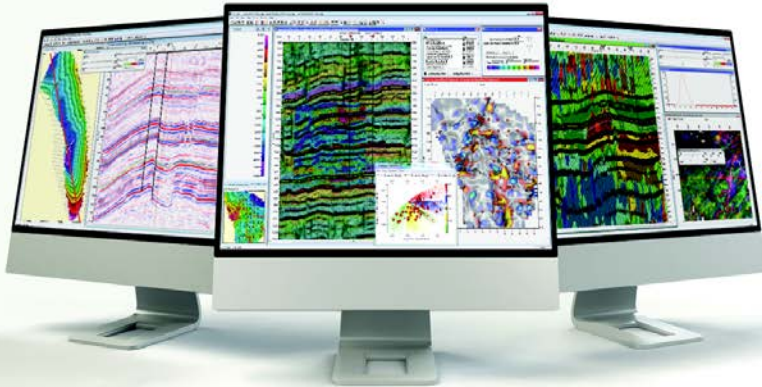


Figure 6: 'Average' Global Temperature Anomaly, 1988 – Jan 2008

continued on page 27

SPONSORS

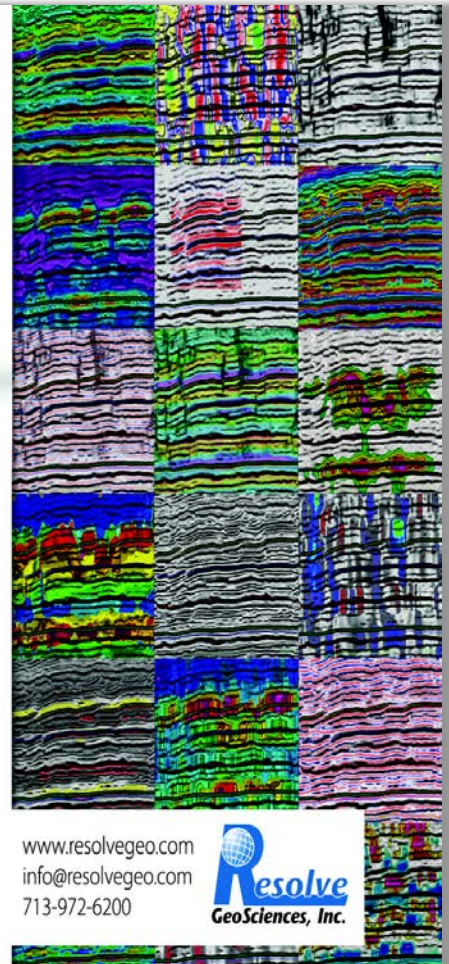


Seismic Attributes, Simplified.

Most attribute workflows are backwards, forcing you to endure timely computations, loading procedures and parameter adjustments before seeing actual results. This makes it hard to effectively narrow down the key attributes for your prospects.

Resolve GeoSciences eliminates that problem by allowing you to immediately scan through a variety of properly conditioned, ready-to-view attributes, with color palettes and ranges set specifically for your project. The key is our powerful attribute analysis software, SeisShow, which is delivered complimentary with our services.

Contact us to find out more about SeisShow and our services:
[Seismic Attributes](#) | [HQ Frequency Enhancement](#) | [Spectral Decomposition](#)



www.resolvegeo.com
info@resolvegeo.com
713-972-6200



Serving Corpus Christi for over 20 years

 **mail express**

501 S. Tanchua St.
Corpus Christi, TX 78401

CALL 888-4332 for details - Ask for Anne

- We process 1st class mail with a direct discount to you
- No meter procedure change except for the amount you meter your envelopes

4) What is the impact of climate on humans?

Predictions for the future have been dire, bordering on catastrophic. These predictions are based on models, however, so if the models are wrong, so too are the predictions. And, some of the predictions have been shown to be wrong. For example, it was predicted that there will be an increase in the number and severity of cyclonic storms as a result of global warming, yet the number of tornados and of Atlantic hurricanes have actually been decreasing and the severity of Atlantic hurricanes based on wind speed, has remained flat.

Personally, this is the part of the debate where I feel we simply fail to learn from history. During the Medieval Climate Optimum, humanity was doing pretty well. We saw widespread global exploration and the Renaissance; both made possible because there were food surpluses. During the little Ice Age, there was widespread famine and death. Humankind has routinely done better with warm climates; so why are we trying to spend billions of dollars to make it cold?

SPONSORS



Manti Resources, Inc

800 N. Shoreline Dr.

Corpus Christi, Texas 78401

(361) 888-7708



EOG Resources Performance You Can Count On

■ **The Dynamics of Performance**

As EOG adds new plays to its portfolio, the company relies on the proven performance of its operations in the United States, Canada, Trinidad, the United Kingdom and China.

■ **The Technology of Performance**

Explorationists fuel EOG's penchant for "growth through the drillbit" by generating exciting new drilling opportunities.

■ **The Consistency of Performance**

EOG continues to focus on a long-term strategy that emphasizes financial returns, a strong balance sheet and organic production growth.



EOG Resources, Inc.
Corpus Christi

539 N. Carancahua, Suite 900
Corpus Christi, TX 78401

(361) 883-9231
www.eogresources.com

CORPUS CHRISTI GEOLOGICAL SOCIETY OFFICERS FOR 2014-2015



PRESIDENT: Leighton L. Devine

Education: B.S. Geology, University of Texas at Austin, 2001
Professional: Suemaur Exploration, October 2009--Present; Independent 2001--2009
Organizations: CCGS, CBGS, GCAGS, CCGL
Present/Past Officer Positions: 2007 Advertising Chair, GCAGS Annual Convention, Corpus Christi; CCGS Advertising Chair, Fall 2006--Spring 2008; CCGS Secretary, Fall 2007-- Spring 2008; CCGS Treasurer, Fall 2008—2013; President-Elect, Fall 2013-Spring 2014.

PRESIDENT-ELECT

Open

continued on page 30

CORPUS CHRISTI GEOLOGICAL OFFICERS FOR 2014-2015



VICE-PRESIDENT: Randy Bissell

Education: B.S., Geology, University of Southern Mississippi, 1982; M.S., Geology, Oklahoma State University, 1984. Field Camp, Miami University (Ohio), 1981

Professional: Headington Oil Company, Senior Geoscientist, 1999-present; Exxon Exploration Company (Esso Nigeria), Lead Professional Geologist, 1996-1999; Esso Australia, Ltd., Exploration Geologist, 1995-1996; Exxon Exploration Company, Deep-Water Reservoir Geologist, 1991-1995; Exxon Company USA, Geologist and Business Analysis, 1984-1991; U.S.G.S., Hydrologic Technician, 1982; Mississippi Geological Survey, Field Assistant, Summers 1978-1979.

Organizations: AAPG, SEG, CCGS, Mississippi Geological Society

Past Officer Positions: CCGS – Secretary, 2011; CCGS – Membership Chairman 2006-present; CBGS – Secretary/Treasurer, 2001, Vice-President, 2002-03.



SECRETARY: Allison Corcoran

Education: B.S., Geology, Texas A&M University-Corpus Christi, Corpus Christi, Texas, 2010; Currently enrolled: M.S. Environmental Science Texas A&M University-Corpus Christi.

Professional: Acock Anaqua Operating Co.,L.P.,Geologist 2008-present; Hilcorp Energy Co., Student Intern/Production,2006-2008

Organizations: AAPG, GSA, API, CCGS, CBGS, Energy Auxiliary

Past Officers Positions: Secretary 2013--Present

CORPUS CHRISTI GEOLOGICAL SOCIETY OFFICERS 2014-2015



TREASURER: Zachary J. Corcoran

Education: BBA Accounting with Geology Minor, Texas A&M University Corpus Christi, 2010-Present, BBA Management, Texas A&M University, College Station 2006

Professional: Independent Petroleum Landman, June 2010-Present, Wachovia Securities, LLC/Wells Fargo Advisors, August 2007-July 2009, Herndon Plant Oakley, Ltd. August 2006-February 2007

Organizations: CCGS

Present/Past Officer Positions: CCGS Treasurer, Spring 2014—Present

continued on page 32

CORPUS CHRISTI GEOLOGICAL OFFICERS FOR 2014-2015



COUNCILOR I: Rick Paige

Education: M.A. Geology, University of Texas at Austin, 1988; B.S. Geology, Southern Connecticut State University, 1983

Professional: Senior Geologist, Suemar E&P, Corpus Christi, 1997--Present; Consulting Geologist, Corpus Christi, 1996-1997; Geologist, Enron Oil & Gas, Corpus Christi Div. 1990-1995; Geologist, Shell Western, Gulf Coast Division Exploration, Houston, 1988-1989

Organizations: CCGS, HGS, AAPG, CBGL

Past Officer Positions: CCGS President 2010-2011; CCGS President Elect 2009-2010; CCGS Vice President 2008-2009; 2007 Short Course Chair, GCAGS Annual Convention, Corpus Christi; CCGS Advertising Chair, Fall 2000--Spring 2003; President, SPWLA, Corpus Christi Chapter, Fall 1996--Spring 1998; Vice President, SPWLA, Corpus Christi, Fall 1994-Spring 1996



COUNCILOR II: Michael E. Lucente

Education: MS Geology, University of Kansas, 1978; BA Geology, St. Thomas University, 1976

Professional: LMP Petroleum, 1993—Present, Chairman; Cox Oil and Gas 1980—1993, Exploration Manager; Getty Oil Company 1978—1980, Exploration Geologist

Organizations: CCGS, AAPG, SIPES; Certified Petroleum Geologist; CCGS Blood Chairman 1991—Present; CCGS Scholarship Chairman 1980—1991; CCGS Secretary 2008—2010; CCGS President Elect 2010-2011; CCGS President 2011-2012

SPONSORS



Since 1905

Royal Exploration Company, Inc.

Bank of America

500 N. Shoreline Blvd. Suite 807 N
Corpus Christi, Texas 78471-1008

Alan Costello - Geologist Robert Rice - Geologist
Matt Hammer - Exploration Manager

Telephone: 361-888-4792 Fax: 361-888-8190



Gulf Coast Onshore Data Resource

Synthetic seismograms

Velocity surveys

Digital sonic log database

WWW.PETROPHYSICS.COM

210-691-2333



LMP PETROLEUM, INC.

EXPLORING SOUTH TEXAS

615 N. Upper Broadway
Suite 1770
Wells Fargo Bank Building
Corpus Christi, Texas 78401-0773

361-883-0923
Fax: 361-883-7102
E-mail: geology@lmpexploration.com

SPONSORS

SEI®

YOUR

**Full Service
National
Seismic Data
Marketing Firm**

Seismic Exchange, Inc.

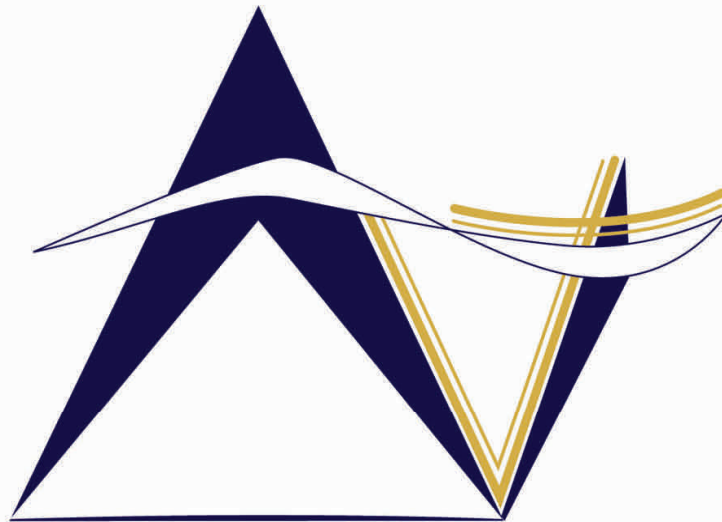
Corpus Marketing Contact:
Jeff Autrey
888-8122 (Direct to Houston)

**Strategic Speculative Surveys
Geophysical Data Marketing & Management**

Corpus Office
361-884-2936

CORPUS CHRISTI DALLAS DENVER HOUSTON NEW ORLEANS OKLAHOMA CITY

11050 Capital Park Dr., Houston, TX 77041 713-623-8300 FAX 832-590-5290



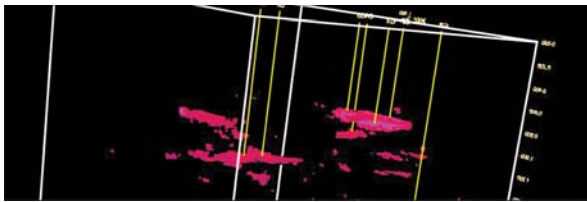
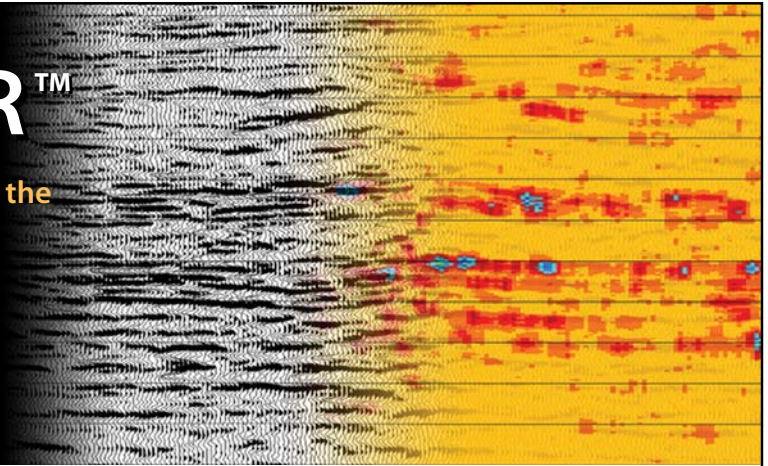
VirTex Operating Company, Inc.

615 North Upper Broadway, Suite 525, Corpus Christi, Texas 78477
(361) 882-3046

DRILL SMARTER™

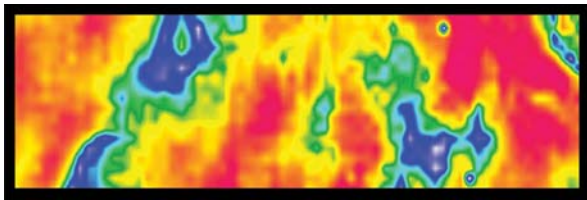
Proprietary Post-Stack Technologies to Aid in the Analysis of Seismic Data and Identification of Direct Hydrocarbon Indicators

Reduce risk • Increase exploration success
Stay ahead of the competition • Improve your ROI



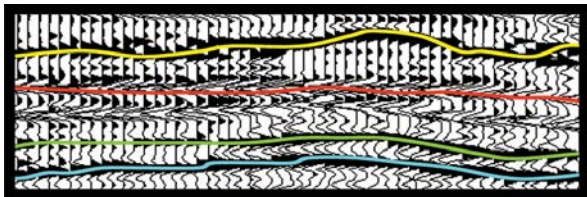
EnergyAbsorptionSM

Measures high frequency absorption indicating the location of increased porosity and potential gas accumulations



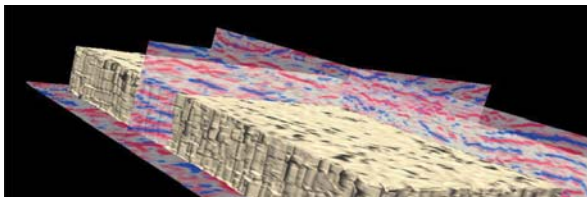
SpecViewSM

Spectral Decomposition identifying hidden stratigraphic information and subtle anomalies within a specific horizon



HiResSM

Recovers detail lost in the standard seismic response



SemCubeSM

Measures a semblance response indicating faulting, fracturing and other anomalous areas

SeismicVentures[®]

For more information, contact Sara Davis at s_davis@seismicventures.com or (281) 240-1234 x206

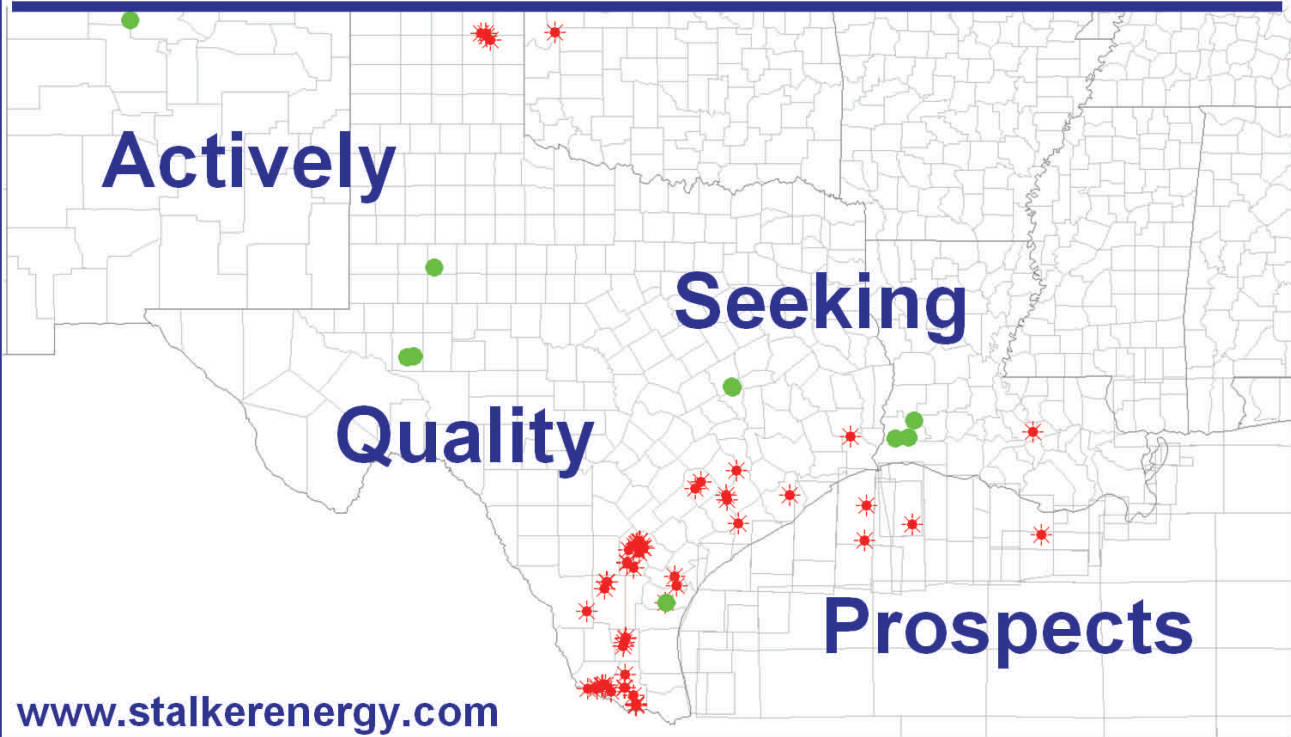
Seismic Ventures, Inc. • 12603 Southwest Freeway, Suite 600 • Stafford, Texas 77477
t: 281-240-1234 • f: 281-240-4997 • www.seismicventures.com

SPONSORS

Austin Office:
 1717 W. 6th Street, Ste 230
 Austin, Texas 78703
 512.457.8711
 Contact: Bill Walker, Jr.
 bwalker@stalkerenergy.com



Houston Office:
 2001 Kirby Drive, Suite 950
 Houston, Texas 77019
 713.522.2733
 Contact: Todd Sinex
 tsinex@stalkerenergy.com



**AS GOOD AS OUR WORD
 TAP INTO OUR RESERVOIR**



www.dawson3d.com
 509 W Wall, Suite 800
 Midland, Texas 79701
 432-684-3000
800-D-DAWSON
 Houston, Texas 713-917-6772
 Denver, Colorado 303-723-0440
 Oklahoma City, Oklahoma 405-848-7512
 Michigan 248-446-9533

EXPERIENCE For over a half-century Dawson has helped its clients succeed. In both seismic acquisition and processing, we deliver high quality data that gets clear-cut results. From field equipment to software, we put the latest technologies into the hands of seasoned professionals who have geophysical knowledge specific to all major U.S. basins. Decades of acquiring data and imaging objectives to provide total subsurface picture. That's what our experience gives you.



Planning • Design • Acquisition • Processing • Results

GEO LINK POST

<http://www.lib.utexas.edu/books/landsapes/index.php> Free service. Rare, fragile, hard-to-find, public domain documents covering various topics about the landscape of Texas. Includes the Texas Geological Survey from 1887 until 1894.

USGS TAPESTRY OF TIME AND TERRAIN <http://tapestry.usgs.gov> The CCGS is donating to all of the 5th and 6th grade schools in the Coastal Bend. Check it out--it is a spectacular map. You might want to frame one for your own office. The one in my office has glass and a metal frame, and It cost \$400 and it does not look as good as the ones we are giving to the schools.

FREE TEXAS TOPOS'S <http://www.tnris.state.tx.us/digital.htm> these are TIFF files from your state government that can be downloaded and printed. You can ad them to SMT by converting them first in Globalmapper. Other digital data as well.

FREE NATIONAL TOPO'S [http://store.usgs.gov/b2c_usgs/b2c/start/\(xcm=r3standardpitrex_prd\)/do](http://store.usgs.gov/b2c_usgs/b2c/start/(xcm=r3standardpitrex_prd)/do) go to this webpage and look on the extreme right side to the box titled TOPO MAPS DOWNLOAD TOPO MAPS FREE.

<http://www.geographynetwork.com/> Go here and try their top 5 map services. My favorite is 'USGS Elevation Date.' Zoom in on your favorite places and see great shaded relief images. One of my favorites is the Great Sand Dunes National Park in south central Colorado. Nice Dunes.

<http://antwrp.gsfc.nasa.gov/apod/asropix.html> Astronomy picture of the day--awesome. I click this page everyday.

<http://www.spacimaging.com/gallery/ioweek/iow.htm> Amazing satellite images. Check out the gallery.

<http://www.ngdc.noaa.gov/seg/topo/globegal.shtml> More great maps to share with kids and students.

www.ccgeo.org Don't forget we have our own we page.

<http://terra.nasa.gov/gallery/> Great satellite images of Earth.

www.ermaper.com They have a great free downloadable viewer for TIFF and other graphic files called ER Viewer.

<http://terrasrver.com> Go here to download free aerial photo images that can be plotted under your digital land and well data. Images down to 1 meter resolution, searchable by Lat Long coordinate. Useful for resolving well location questions.

TYPE LOGS OF SOUTH TEXAS FIELDS by Corpus Christi Geological Society

NEW (2009-2010)TYPE LOGS IN RED; ***2011;**

lost now found

ARANSAS COUNTY

Aransas Pass/McCampbell Deep
Bartell Pass
Blackjack
Burgentine Lake
Copano Bay, South
Estes Cove
Fulton Beach
Goose Island
Half Moon Reef
Nine Mile Point
Rockport, West
St. Charles
Tally Island
Tract 831-G.O.M. (offshore)
Virginia

BEE COUNTY

Caesar
Mosca
Nomanna
Orangedale(2)
Ray-Wilcox
San Domingo
Tulsita Wilcox

BROOKS COUNTY

Ann Mag
Boedecker
Cage Ranch
Encintas
ERF
Gyp Hill
Gyp Hill West
Loma Blanca
Mariposa
Mills Bennett
Pita
Tio Ayola
Tres Encinos

CALHOUN COUNTY

Appling
Coloma Creek, North
Heyser
Lavaca Bay
Long Mott
Magnolia Beach
Mosquito Point
Olivia
Panther Reef
Powderhorn
Seadrift, N.W.
Steamboat Pass
Webb Point
S.E. Zoller

CAMERON COUNTY

Holly Beach
Luttes
San Martin (2)
Three Islands, East

Vista Del Mar

COLORADO COUNTY

E. Ramsey
Graceland N. Fault Bik
Graceland S. Fault Bik

DEWITT COUNTY

Anna Barre
Cook
*******Nordheim**
Smith Creek
Warmsey
Yorktown, South

DUVAL COUNTY

DCR-49
Four Seasons
Good Friday
Hagist Ranch
Herbst
Loma Novia
Petrox
Seven Sisters
Seventy Six, South
Starr Bright, West

GOLIAD COUNTY

Berclair
North Blanca
Bombs
Boyce
Cabeza Creek, South
Goliad, West
St Armo

HIDALGO COUNTY

Alamo/Donna
Donna
Edinburg, West
Flores-Jeffress
Foy
Hidalgo

LA Blanca
McAllen& Pharr
McAllen Ranch
Mercedes
Monte Christo, North
Penitas
San Fordyce
San Carlos
San Salvador
S. Santallana
Shary
Tabasco
Weslaco, North
Weslaco, South

JACKSON COUNTY

Carancahua Creek
Francitas
Ganado & Ganado Deep
LaWard, North
Little Kentucky

Maurbro

StewartSwan Lake

Swan Lake, East
Texana, North
West Ranch

JIM HOGG COUNTY

Chaparosa
Thompsonville,N.E.

JIM WELLS COUNTY

Freebom
Hoelsner
Palito Blanco
Wade City

KARNES COUNTY

Burnell
Coy City
Person
Runge

KENEDY COUNTY

Candelaria
Julian
Julian, North
Laguna Madre
Rita
Stillman

KLEBERG COUNTY

Alazan
Alazan, North
Big Caesar
Borregos
Chevron (offshore)
Laguna Larga
Seeligson
Sprint (offshore)

LA SALLE COUNTY

*****Pearsall**

LAVACA COUNTY

Hallettsville
Hope
Southwest Speaks
Southwest Speaks Deep
LIVE OAK COUNTY

Atkinson

Braslau
Chapa
Clayton
Dunn
Harris
Houdman
Kittie West-Salt Creek
Lucille
Sierra Vista
Tom Lyne
White Creek
White Creek, East

MATAGORDA COUNTY

Collegeport

MCMULLEN COUNTY

Arnold-Weldon

Brazil
Devil's Waterhole
Hostetter
Hostetter, North

NUECES COUNTY

Agua Dulce (3)
Arnold-David
Arnold-David, North
Baldwin Deep
Calallen
Chapman Ranch
Corpus Christi, N.W.
Corpus Christi West C.C.
Encinal Channel
Flour Bluff/Flour Bluff, East
GOM St 9045(offshore)
Indian Point
Mustang Island
Mustang Island, West
Mustang Island St.
889S(offshore)
Nueces Bay/Nueces Bay
West

Perro Rojo

Pita Island
Ramada
Redfish Bay
Riverside
Riverside, South
Saxet
Shield
Stedman Island

Turkey Creek

REFUGIO COUNTY

Bonnieview/Packery Flats
Greta
La Rosa
Lake Pasture
Refugio, New
Tom O'Connor
SAN PATRICIO COUNTY

Angelita East

Commonwealth
Encino
Enos Cooper
Geronimo
Harvey
Hiberia
Hodges
Mathis, East
McC Campbell Deep/Aransas Pass
Midway
Midway, North
Odem

Plymouth

Portilla (2)

Taft
Taft, East
White Point, East

STARR COUNTY

El Tanque
Garcia
Hinde
La Reforma, S.W.

Lyda

Ricaby
Rincon
Rincon, North
Ross
San Roman
Sun
Yturria

VICTORIA COUNTY

Helen Gohike, S.W.
Keeran, North
Marcado Creek
McFaddin
Meyersville
Placedo

WEBB COUNTY

Aquilares/Glen Martin
Big Cowboy
Bruni, S.E.
Cabezon
Carr Lobo
Davis
Hirsch
Juanita
Las Tiendas
Nicholson
O'Hem
Olmitos
Tom Walsh

WHARTON COUNTY

Black Owl

WILLACY COUNTY

Chile Vieja

La Sal Vieja
Paso Real
Tenerias
Willamar

ZAPATA COUNTY

Benavides
Davis, South
Jennings/Jennings, West
Lopeno
M&F
Pok-A-Dot

ZAVALA COUNTY

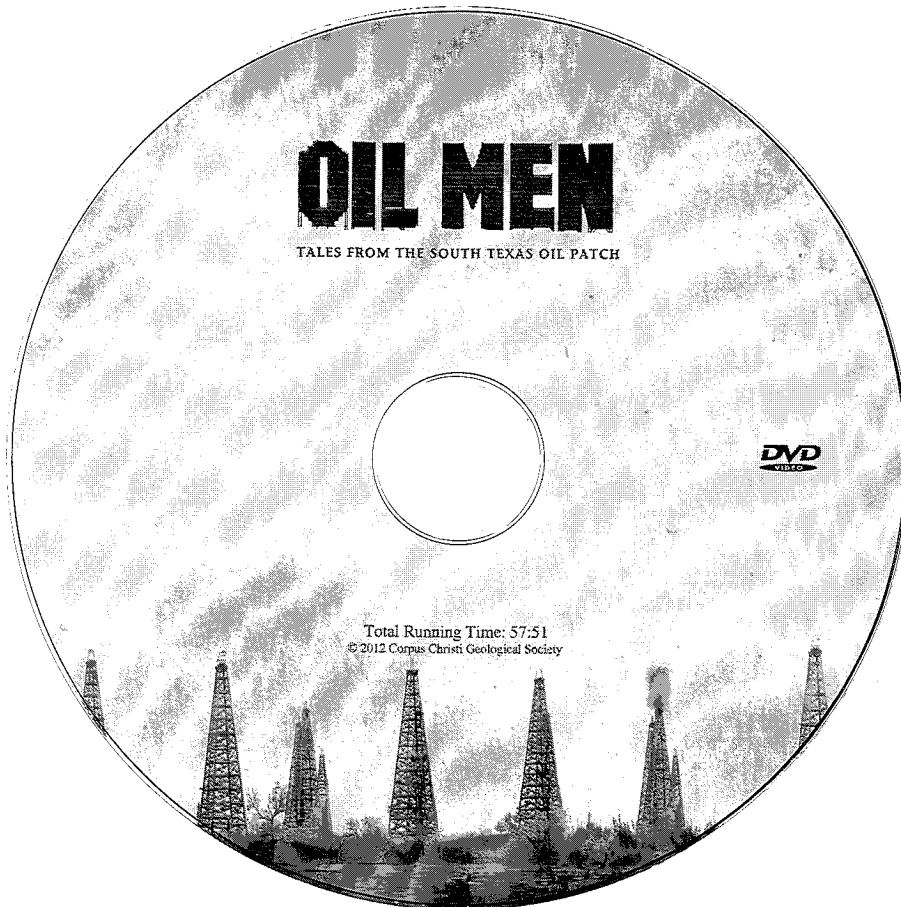
El Bano

Call Coastal Bend Geological Library, Maxine: 361-883-2736
1 log -- \$10 each, 5-10 logs \$9 each and 10 + logs \$8.00 each – plus postage

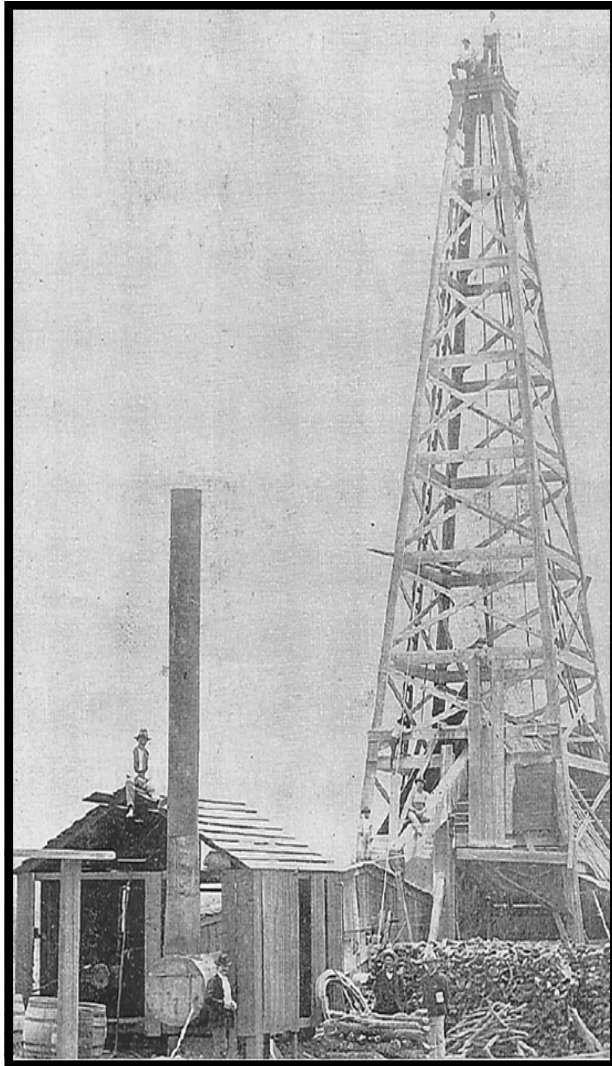
OIL MEN

TALES FROM THE SOUTH TEXAS OIL PATCH
DVD

MEMBER PRICE \$25
NONMEMBER \$30



To Order DVD
Sebastian Wiedmann
swiedmann@braytoncc.com
If mailed add \$5



Corpus Christi Geological Society
C/O Javelina Press
P. O. Box 60181
Corpus Christi, TX 78466

Order Form

Mail order form for Wooden rigs-Iron Men. The price is \$75 per copy, which includes sales tax, handling, and postage

Name _____

Address _____

City, State, Zip _____

No. of books _____ Amount enclosed _____

Send to Corpus Christi Geological Society Book Orders

P. O. Box 60181

Corpus Christi, TX. 78466 Tax exempt# if applicable _____

Wooden Rigs—Iron Men

The Story of Oil & Gas in South
Texas

By Bill & Marjorie K. Walraven

Published by the
Corpus Christi Geological Society



4201 FM 1960 West, Ste. 245
Houston, TX 77068
Office: 832-249-1000
Fax: 832-249-1007
Cell: 713-412-9133

8610 N. New Braunfels, Ste. 517
San Antonio, TX 78217
Office: 210-826-2553
Fax: 210-826-2570

520 Starr St.
Corpus Christi, TX 78401
Office: 361-888-8288
Fax: 361-888-4617
Cell: 361-816-6936

Randy Acock, P.E.
President
randy@aeaicc.com
www.aeaicc.com

david becker

David Becker
exploration
geologist

geologist

o: (361) 884-3613
f: (888) 869-2011

600 leopard st. ste 706

corpus christi. tx 78473

dkbecker1137@sbcglobal.net

Bergsma Consulting

Michael Bergsma
Geophysicist

Office: 615 Leopard, Suite 430
Corpus Christi, Texas 78476
Mailing: P.O. Box 955
Corpus Christi, Texas 78403

Cell: 361.537.6964
Home: 361.855.4515
Fax: 1.877.496.0316
e-mail: bergsmaconsulting@davlin.net



Bier Seis, Inc.
Geophysical Consulting

David Biersner, President
19446 Arrowood Place
Garden Ridge, Tx 78266
Cell: 281.744.7457
E-Mail: bierseis@yahoo.com

Field Quality Control
Program Management
Permit Management
Seismic Line Clearing
Supervision



Dawn S. Bissell
Geoscientist

Advent Geoscience Consulting, LLC

Phone: 361-960-2151
Fax: 961-854-2604
Email: bissells@swbell.net

253 Circle Drive
Corpus Christi, TX 78411
Home: 361-854-2635

MUD LOGGING SERVICE



Since 1961

MIKE BULLARD

(361) 221-9717 Office
(361)522-1245 Cell

E-Mail md_bullard@sbcglobal.net

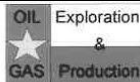
(361) 211-9715 Fax
P.O. Box 1011
Kingsville, Tx 78363

HYDROCARBON OPERATING, INC
HYDROCARBON HORIZONS, INC.
600 Leopard St., Suite 1724
Corpus Christi, Texas 78473

Brian S. Calhoun

Office 361-887-6655 Fax 361-887-6341
Cell 361-877-7557
Email: BCalhoun_HOI@sbcglobal.net

TEXAS LONE STAR
PETROLEUM CORPORATION



JEFF COBBS

President - Geologist

615 Leopard St., Suite 336

Corpus Christi, Texas 78401-0610

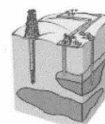
jc@tlspc.com

Office(361) 883-2911

Fax (361) 883-2151

Cell (361) 960-0530

Jim Collins
Geoscientist



361.537.4034
jim@gulfcoastgas.com



SV Energy Company, LLC
Conventional Thinking. Unconventional Results.

Frank G. Cornish
Consulting Geologist
615 N. Upper Broadway, Suite 1770
Corpus Christi, TX 78401
frank.cornish@gmail.com

361-883-0923 (o)
1-800-510-5810 (f)
361-563-9184 (m)

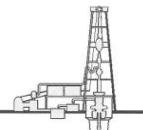


Croft Exploration

Wayne S. Croft
Geologist
SIPES #2318

5021 Graford Place • Corpus Christi, Texas 78413
(361) 991-7450 Fax (361) 991-5790

TOM DAVIDSON
GEOLOGIST



28550 IH-10 WEST SUITE #4
BOERNE, TEXAS 78006

BUS: (210) 844-8963
RES: (830) 981-5883
FAX: (830) 981-5567
CEL: (210) 844-8963



E-MAIL
tomgeo@gvtc.com

ONE APEX ENERGY, INC

CHRISTIAN DOHSE
GEOLOGIST

(361) 877-3431
CHRISTIAN.DOHSE@GMAIL.COM
CORPUS CHRISTI, TX



VENTEX
Oil & Gas, Inc.

Thomas V. Dubois
Geologist

2627 CR 312
Yoakum, Texas 77995

Phone (361) 215-0223
Email: tdubois@uswide.net

Fields Exploration, Inc.

545 N. Upper Broadway, Suite 1100 East
Corpus Christi, Texas 78476

Bruce W. Fields, President
Byron W. Fields, Vice President 361-883-4721
Craig B. Fields, Vice President 361-883-4715 Fax



VENTEX
Oil & Gas, Inc.

Email mfraney@uswide.net

MATTHEW FRANEY
Geologist

600 Leopard
Suite 904
Corpus Christi, Texas 78473

Phone (361) 888-6327
FAX (361) 882-8820

GISLER BROTHERS LOGGING Co., Inc.

P.O. BOX 485
106 E. MAIN

RUNGE, TX 78151



Wes Gisler
Bus. (830) 239-4651
Mobile (361) 676-1369

Home (830) 239-4914
Direct (830) 239-4693
wes@gislerbrotherslogging.com

Robert Graham
President
grexploration@gmail.com

Phone 361-882-7681
Fax 361-882-7685
Cell 361-774-3635

GrX Inc.

Exploratory Prospects & Production Development

Mail:
P. O. Box 1843
Corpus Christi, Texas
78403-1843

Office:
606 N. Carancahua, Ste. 610
Corpus Christi, Texas
78401-0634



RAY GOVETT, Ph. D.
CONSULTING GEOLOGIST
361-855-0134

EPL
OIL & GAS, INC.

Kathy Hardy
Lead Asset Geoscientist

EPL Oil & Gas, Inc.
919 Milam
Suite 1600
Houston, TX 77002
www.eplweb.com

Direct: (713) 815-3292
Cell: (832) 236-7442
Fax: (713) 815-3391
khardy@eplweb.com



HART EXPLORATION, LLC.

RICK HART
Geologist / Owner

P.O. Box 729
Coldspring, Texas 77331

Cell: 512-626-3053
Email: hartexploration@aol.com

RIVIERA EXPLORATION, LLC

H. TONY HAUGLUM
President

600 LEOPARD ST.
SUITE 1704
CORPUS CHRISTI
TEXAS 78401

PHONE 361.884.1811
FAX 361.884.8071
E-MAIL THAUGLUM@SWBELL.NET

GEORGE H. HOBBS
Drilling and Completion Supervision
AFE and Well Design Preparation

P.O. Box 1711
San Benito, Texas 78586

Home (956) 399-9718
Mobile (956) 605-4563
george_hobbs@msn.com



BRENT F. HOPKINS
PRESIDENT AND CEO
GEOLOGIST

FROST BANK PLAZA
802 N. CARANCAHUA, SUITE 1000
CORPUS CHRISTI, TEXAS 78401-0015

OFFICE: (361) 884-8824
FAX: (361) 884-9623
RES: (361) 643-8373
CELL: (361) 215-4855
Email: brenth@suemaur.com

CHARGER EXPLORATION

MICHAEL L. JONES
PRESIDENT/GEOLOGIST

1001 MCKINNEY STREET
STE. 801
HOUSTON, TX 77002

MAIN (713) 654-0080
FAX (713) 654-0086
CELL (713) 398-3092

mjones@chargerexploration.com
www.chargerexploration.com



Louis R. Lambiotte
Geologist

LMP Petroleum, Inc.
615 N. Upper Broadway, Suite 1770
Corpus Christi, TX 78477
Tel: (361) 883-0923
Fax: (361) 883-7102
E-mail: geology@LMPexploration.com



Allen Lassiter, Geologist

711 N. Carancahua St., #906
Corpus Christi, TX 78401
alassiter@reveilleoilandgas.com

O: 361-884-6886
F: 361-884-9102
C: 361-960-5106



2209 N. Padre Island Drive, Suite W
Corpus Christi, Texas 78408
United States

Sara Leal
Core Evaluation Specialist

+1.361.884.0683 Main (24 Hr)
+1.361.249.0985 Direct
+1.361.884.8283 Fax

sara.leal@weatherfordlabs.com
www.weatherfordlabs.com



Tom Long
President

600 Leopard Street, Suite 1310
Corpus Christi, Texas 78473
Phone (361) 698-6060
Cell (361) 813-4002
Fax (361) 698-6066
Email tom@sevencs.com
www.sevencs.com



Vicki Marlett
Sr. Account Manager

972-690-1122 x132
Fax: 972-690-1163
Cell: 214-557-0815
e-mail: vmarlett@geotrace.com
2435 N. Central Expressway, Suite 1100
Richardson, Texas 75080
www.geotrace.com

CURTIS R. MAYO
GEOLOGICAL CONSULTANT

Reserve Analysis Prospect Evaluation
Expert Witness Prospect Generation

Fredericksburg, Texas 78624

Office: 830.992.2938 Cell: 830.765.0628 E-Mail: cmayo@crecsc.net

Dennis O. Moore
Formation Evaluation
Wireline Systems - Southern Area



800 N. Shoreline Blvd., Suite 700 N. Tower
Corpus Christi, Texas 78401-3771
Office: 361-883-1561
Fax: 361-883-4390
Cell: 361-816-5144
Email: dennis.moore@bakerhughes.com

www.bakerhughes.com



J. Mark Miller
President

Phone (361) 883-7700
Fax (361) 883-7701
mark@millersmithgas.com
545 N. Upper Broadway
Suite 400
Corpus Christi, Texas 78476

Wellhead Gas Marketing

Mailing Address
615 Leopard, Ste. 640
Corpus Christi, Texas 78401-0641
361.882.7888 phone
361.882.7889 fax
361.946.2581 mobile

Contact Address
1701 Southwest Parkway, Ste. 109
College Station, Texas 77840
866.946.2581 phone
866.946.2580 fax

pmueller@muelrexp.com
www.muelrexp.com



J. Paul Mueller, Jr.
President



Daniel J. Neuberger
Geologist and President

Austin Office:
712 Windsong Trail
West Lake Hills, Texas 78746

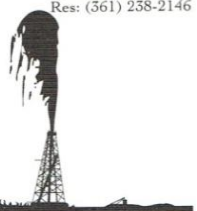
Office (361) 548-7723
Home (512) 306-1223
dan@neuoilandgas.com

Patrick Nye
President
patrick@nyexp.us

Office: (361) 452-1455
Cell: (361) 658-1089
Res: (361) 238-2146



802 N. Carancahua, Suite 1840
Frost Bank Plaza
Corpus Christi, TX 78401
www.nyexp.us



BRIAN E. O'BRIEN

Main: 713-783-4883
Fax: 713-783-3039
Res: 713-784-7911
Cell: 713-899-5164
E-mail: bobrien@saxetpetroleum.com

510 Bering Drive
Suite 600
Houston, Texas 77057

YOUR CARD COULD BE HERE!!!
\$30 FOR 10 ISSUES
AD PRICES PRO-RATED
EMAIL CHRISTIAN AT
CHRISTIAN.DOHSE@GMAIL.COM



Herradura
Petroleum, Inc.

JEFF OSBORN
Geologist

711 N. Carancahua, Ste. 1750
Corpus Christi, Texas 78475
e-mail: jeff@herradurapetroleum.com

Office: 361-884-6886
Fax: 361-884-9102
Cell: 361-537-2349

SWIFT ENERGY COMPANY



RICHARD M. PARKER P.G.
Manager / Geological Operations
TBPG License # 6056

(281) 874-2585
Mobile # 1 (713) 724-4380
Mobile # 2 (713) 206-3158
Home: (281) 412-0745

16825 NORTHCHASE DR., SUITE 400
HOUSTON, TEXAS 77060 E-mail: richard.parker@swiftenergy.com



3 Riverway, Suite 650
Houston, Texas 77056

office: 713-333-9200
cell: 832-418-3409
mprzywara@qstarllc.com

Mark S. Przywara
Vice President - Geosciences



EOG Resources, Inc.
19100 Ridgewood Pkwy
Building 2
San Antonio, TX 78259-1828
Direct: (210) 403-7852

Sara Reilly
Geologist

P. O. Box 592929
San Antonio, TX 78259-0196
Fax: (210) 403-7853
sara_reilly@eogresources.com

First Rock, Inc.

RGR Production

First Rock I, LLC

Gregg Robertson

Main Office:
600 Leopard, Suite 1800
Corpus Christi, TX 78401
361-884-0791

Field Office:
5574 FM 1344
Floresville, TX 78114
830-484-1122



Wireline Services

Weatherford International Ltd.
401 E. Sonterra Blvd., Suite 175
San Antonio, Texas 78258
USA

Sam Roach
US Gulf Coast Wireline Sales

+1.210.930.7588 Direct
+1.210.930.7610 Fax
+1.210.241.2463 Mobile

sam.roach@weatherford.com
www.weatherford.com



Douglas Sartoris
exploration geologist

DSX energy limited, LLP
One Shoreline Plaza, 800 North Shoreline Blvd.
South Tower, Suite 2570, Corpus Christi, TX 78401
bus. 361.884.1130 fax. 361.884.1171 email: dsartoris@aol.com

TOM SELMAN
selmanlog.com
tselman@selmanlog.com

Ofc. (432) 563-0084
(800) 578-1006
Cell (432) 288-2259



GEOLOGICAL CONSULTING / SURFACE LOGGING SERVICES

P.O. Box 61150 Midland, TX 79711 4833 Saratoga #624 Corpus Christi, TX 78413 P.O. Box 2993 Rock Springs, WY 82902

Crossroads Exploration

Gloria D. Sprague
Geologist

Timpson Building
189 N. First Street, Suite 111
Timpson, Texas 75975

Office: (936) 254-3600
Fax: (936) 254-3602
Mobile: (936) 488-9428

E-Mail: gsprague@usawide.net

THOMAS W. SWINBANK

CERTIFIED PETROLEUM GEOLOGIST
PRESIDENT

STRIKE OIL & MINERALS CORP.

PHONE/FAX 512-863-7519

P.O. Box 1399

HOME 512-863-7903

GEORGETOWN, TEXAS 78627

CELL 512-876-9585

Dennis A. Taylor
Vice President of Geology
dennis@amshore.com

Off: (361) 888-4496
Fax: (361) 888-4588
Direct Line: (361) 844-6722
Cell: (972) 672-9916



AMERICAN SHORELINE, INC.

AMSHORE TEXAS WIND, LLC

802 N. Carancahua Street, Suite 1250
Corpus Christi, Texas 78401-0019
www.amshore.com

Environmental

Exploration & Production

JEANIE TIMMERMANN

GEOSCIENTIST
TX LICENSE #2289

7214 Everhart #9
Corpus Christi, TX 78413

(361) 991-7451

jtimmermann74@ymon.com



Davis
Petroleum
Corp.

www.davispetroleumcorp.com

Jim Travillo
Senior Geoscientist

1330 Post Oak Boulevard
Suite 600
Houston, Texas 77056

Direct: 713.439.6773
Main: 713.626.7766
Fax: 713.626.7775
Cell: 713.823.9332

jtavillo@davcos.com



10001 Richmond Avenue
Houston, TX 77042-4299
P.O. Box 2469 (77252-2469)
Tel: 713-689-6552
Fax: 713-689-1089
Mobile: 281-615-6827
CTutt@slb.com

Chris O. Tutt
Sales Representative
NAM Sales



WILLIAM A. WALKER, JR.
Certified Petroleum Geologist
bwalker@stalkerenergy.com

1717 WEST 6th STREET, STE. 230 • AUSTIN, TX 78703
2001 KIRBY DR., STE. 950 • HOUSTON, TX 77019

AUSTIN

512.457.8711

cell: 512.217.5192

fax: 512.457.8717

HOUSTON

713.522.2733

cell: 512.217.5192

fax: 713.522.2879

SEBASTIAN P. WIEDMANN
GEOSCIENTIST

WILSON PLAZA WEST
606 N. CARANCAHUA, SUITE 500
CORPUS CHRISTI, TEXAS 78401

OFFICE (361) 884-4084
FAX (361) 882-7816
MOBILE (361) 946-4430

swiedmann@braytonc.com

JOHN C WORLEY-GEOLOGIST

Summer/Fall-

Bozeman, MT 59718

Winter/Spring-120 Sugar Cr

Rockport, TX 78382

406-388-0561 or 361-790-7900



10001 Richmond Avenue
Houston, Texas 77042-4299
P.O. Box 2469 (77252-2469)

Tel: 713-689-2757
Fax: 713-689-1089
Mobile: 281-658-5263
CYanez@slb.com

Charles Yanez
Manager
Shared Value Optimization



Amir Zaman

Vice President, Business Development

Ph: 713.278.0400
Cell: 832.576.1368
azaman@crescentgeo.com

2500 Wilcrest Drive, Suite 202
Houston, Texas 77042
www.crescentgeo.com



Nicola Coronis
Account Manager

431 Mason Park, Suite B
Katy, Texas 77450

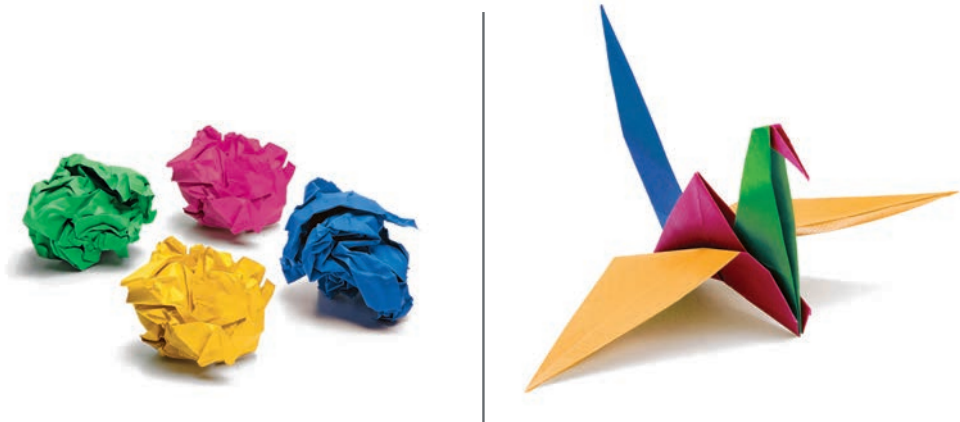
Seismic Attribute Services

Direct: 713-972-6209
Fax: 281-395-6999

www.resolvevegeo.com

E-mail: ncoronis@resolvevegeo.com

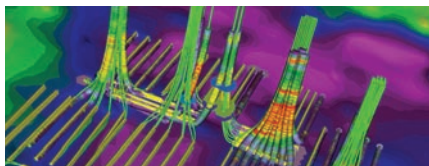
YOUR CARD COULD BE HERE!!!
\$30 FOR 10 ISSUES
AD PRICES PRO-RATED
EMAIL CHRISTIAN AT
CHRISTIAN.DOHSE@GMAIL.COM



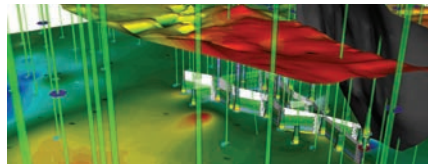
Build reservoir analyses. Watch your potential soar.

IHS PETRA® provides a unique solution to integration, analysis and manipulation of geological, geophysical, petrophysical and engineering information. With easy data loading and a powerful and flexible database, you can both effectively manage projects and quickly visualize results using interactive mapping, cross sections, log plots, cross plots and more—all within a single system. Superior technical support and proven integration of customer enhancements make PETRA the highest-ranked¹ geological interpretation tool in the E&P industry for both reliability and accuracy and ease of use. **Energy information, refined.**

¹Welling & Company Geological & Geophysical Software Study, 2009



Directional Well Module



3D Visualization Module

ihs.com/petra-ccgs-1



The Source
for Critical Information and Insight

©2010 IHS Inc. All rights reserved.