

BULLETIN

CORPUS CHRISTI GEOLOGICAL SOCIETY



and

COASTAL BEND GEOPHYSICAL SOCIETY



May
2014

ISSN 0739-5620

American Shoreline, Inc.



Specializing in
Oil & Gas Exploration
& Wind Energy

Compliments of

Paul Strunk, President

Jena Nelson, VP Finance & Administration

Dennis Taylor, VP Geology

802 N. Carancahua
Frost Bank Plaza, Suite 1250
Corpus Christi, Texas 78401
(361) 888-4496

www.amshore.com

SPONSORS

KNOWLEDGE REVEALED

PURPOSE DRIVEN

- Unrivaled land seismic acquisition capabilities
- Specific solutions for all terrains and environments (land, shallow water/transition zone and OBC)
- Purpose driven crews with proven experience around the world
- Processing and Interpretation services revealing the project knowledge you need
- Full azimuth 3D and 3C coverage in unconventional resource plays
- Multi-Client opportunities in North America, Latin America and Australasia
- Proven experience in:
 - Azimuthal anisotropy resolution and fracture identification
 - Multicomponent processing
 - AVO processing and inversion



INNOVATIVE
GEOPHYSICAL
SOLUTIONS



geokinetics.com



CORPUS CHRISTI GEOLOGICAL SOCIETY

P.O. BOX 1068 * C.C. TX. 78403

2013-2014

www.ccgeo.org

OFFICERS

President	Bob Critchlow	361-882-3046	bcritchlow@virtexoperating.com
President Elect	Leighton Devine	361-510-8872	ldevine@stx.rr.com
Vice President	Beth Priday	361-882-3046	bpriday@virtexoperating.com
Secretary	Allison Corcoran	361-888-8288	allison@aaoperating.com
Treasurer	Zachary Corcoran	361-658-5850	zcorcoran1982@gmail.com
Past President	Dennis Taylor	972-672-9916	dennis@amshore.com
Councilor I	Rick Paige	361-884-8824	rickp@suemaur.com
Councilor II	Mike Lucente	361-883-0923	mikel@Impexploration.com

AAPG DELEGATES

2006-13	Dennis Moore	361-883-1516	dennis.moore@bakeratlas.com
2011-13	Frank Cornish	361-883-0923	frank.cornish@gmail.com

EDITORS

Bulletin Editor	Marian Wiedmann	361-855-2542	wiedgulf@aol.com
Bulletin Tech. Editor	Lauren Rosson	361-742-7252	lrosson@virtexoperating.com
Web Master	Chris Davis	361-537-1508	cdavis@spurfire.com

GEOLOGICAL SOCIETY COMMITTEES & CHAIRPERSONS

Advertising	Sara Miller	361-887-2691	ads@ccgeo.org
Business Cards	Christian Dohse	361-877-3431	christian.dohse@gmail.com
Arrangements	Allison Corcoran	361-888-8288	arrangements@ccgeo.org
Bloodmobile	Mike Lucente	361-883-0923	mikel@Impexploration.com
Earth Day	Alan Costello	361-888-4792	acostello@royalcctx.com
Continuing Ed. Education & Scholarship	Stephen Thomas Dawn Bissell	361-888-8880 361-960-2151	bissells@swbell.net
Fishing Tournament	Ed Egger	361-882-8400	edegger@3dimaging.net
History	Ray Govett	361-855-0134	raywg@hotmail.com
Membership	Randall Bissell	361-816-4920	membership@ccgeo.org

Shrimp Boil	David Kirk	361-774-1136	dkirk@rivieraproduction.com
Type Logs	Frank Cornish	361-883-0923	frank.cornish@gmail.com
University Liaison	Zach Corcoran	361-902-2857	zcorcoran1982@gmail.com



**COASTAL BEND GEOPHYSICAL SOCIETY
P.O. BOX 2741 * C.C. TX. 78403
2013-2014**

OFFICERS

President	Lonnie Blake	361-883-2831	lonnie_blake@eogresources.com
Vice President	Tom Long	361-698-6063	tom@sevenis.com
Secretary/ Treasurer	Matt Hammer	361-888-4792	mhammer@royalcctx.com

COMMITTEES AND CHAIRPERSONS

Membership	Randall Bissell	361-816-4920	randyb@headington.com
Golf Chairman	Ed Egger	361-882-8400	edegger@3dimaging.net
Scholarship/ Chairman	Ed Egger	361-882-8400	edegger@3dimaging.net

**Visit the geological
Web site at
www.ccgeo.org**

TABLE OF CONTENTS

Officers, Committees, and Chairpersons, CCGS, CBGS.....	2 & 3
Blood Drive.....	5
Calendar of Meetings and Events.....	6 & 7
CCGS President's Letter.....	8
Ideas for Presentations.....	9
CBGS President's Letter.....	10
Luncheon Meeting Announcement.....	13
Fossil Hunt 2014.....	18
Geo Link Post.....	28
Type Logs of South Texas Fields.....	29
Order OIL MEN DVD.....	30
Wooden Rigs--Iron Men.....	31
Professional Directory.....	32

*****BLOOD DRIVE*****

THE BLOODMOBILE – IN MAY, 2014
WILL BE AT SOME CONVENIENT LOCATIONS
PLEASE CALL 855-4943 for those locations or –

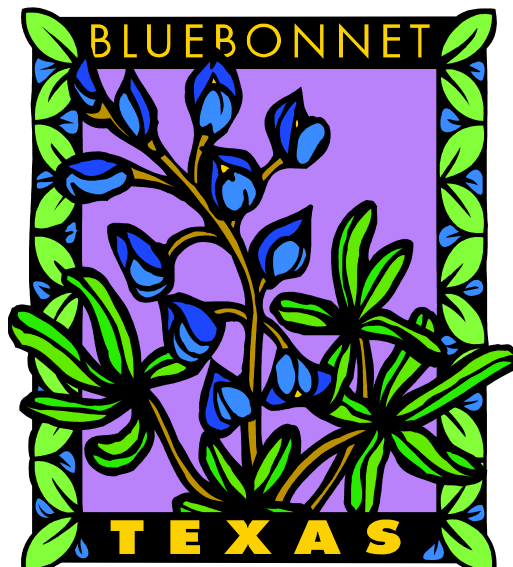
**FOR CURRENT SCHEDULES & LOCATIONS OF THE
BLOODMOBILES YOU CAN LOG ON TO:**

www.coastalbendbloodcenter.com

ATTENTION!!!

When you give blood: They have us listed as C.C. Geological Society. Our number with them is 4254 & it would be helpful if you can give them that number also.

Thanks! Mike Lucente



*Check out the wild flowers in our great State!
Then - Zoom over to the Bloodmobile!!
Please Donate your Blood!!
You'll be glad you did!*

CCGS/CBGS JOINT MEETING SCHEDULE 2013-2014

September 2013							October 2013							November 2013							
S	M	T	W	Th	F	S	S	M	T	W	Th	F	S	S	M	T	W	Th	F	S	
1	2	3	4	5	6	7			1	2	3	4	5							1	2
8	9	10	11	12	13	14	6	7	8	9	10	11	12	3	4	5	6	7	8	9	
15	16	17	18	19	20	21	13	14	15	16	17	18	19	10	11	12	13	14	15	16	
22	23	24	25	26	27	28	20	21	22	23	24	25	26	17	18	19	20	21	22	23	
29	30						27	28	29	30	31			24	25	26	27	28	29	30	

Sept. 12, 2013
5:30p.m.—8:00p.m.
Kickoff BBQ—The Bar-B-Q
Man Patio Cantina

Oct. 16,—11:30a.m.—1:00p.m.
Speaker: Jamie Rich—Professor
Univ. of Ok. “Unconventional
Geophysics: Unique Approaches
For Unique Problems

Nov. 20—11:30a.m.—1:00p.m.
Speaker: Hongliu Zeng--
Bureau of Economic Geology
“Stratal slice: The next
generation”

December 2013							January 2014							February 2014						
S	M	T	W	Th	F	S	S	M	T	W	Th	F	S	S	M	T	W	Th	F	S
1	2	3	4	5	6	7				1	2	3	4	1	2	3	4	5	7	8
8	9	10	11	12	13	14	5	6	7	8	9	10	11	9	10	11	12	13	14	15
15	16	17	18	19	20	21	12	13	14	15	16	17	18	16	17	18	19	20	21	22
22	23	24	25	26	27	28	19	20	21	22	23	24	25	23	24	25	26	27	28	
29	30	31					26	27	28	29	30	31								

Dec. 18—11:30a.m.—1:00p.m.
Speaker: Eddie Valek, Marathon
“From 0-80 in Ninety Days: Rapid
Play Entry to Fully Integrated
Play Development in the Eagle
Ford Trent, South-Central TX.”

Jan. 15—11:30a.m.—1:00p.m.
Speaker: Kevin Schepel, ZaZa Corp.
“Advanced Reservoir
Characterization for Proof-of-
Concept Drilling in the Eagle
Ford and Eaglebine Shales”

Feb. 19—11:30a.m.—1:00p.m.
Speaker: J. Carl Fiduk, Western
Geco, “A Brief Tectonic and
Depositional History of the
Northern GOM “

CCGS/CBGS JOINT MEETING SCHEDULE 2013-2014

March 2014							April 2014							May 2014						
S	M	T	W	Th	F	S	S	M	T	W	Th	F	S	S	M	T	W	Th	F	S
						1			1	2	3	4	5					1	2	3
2	3	4	5	6	7	8	6	7	8	9	10	11	12	4	5	6	7	8	9	10
9	10	11	12	13	14	15	13	14	15	16	17	18	19	11	12	13	14	15	16	17
16	17	18	19	20	21	22	20	21	22	23	24	25	26	18	19	20	21	22	23	24
23	24	25	26	27	28	29	27	28	29	30				25	26	27	28	29	30	31
30	31																			

March 19—11:30a.m. 1:00p.m.
Speaker: Richard Davis (Harte
Research Institute) “Sea-Level
Change in the Gulf of Mexico”

April 16—11:30a.m.-1:00p.m.
Speaker: Robert C. Schoup
(Subsurface Consultants &
Associates) “What are Global
Temperatures Doing & Why
Are They Doing It?”

May 21—11:30a.m. 1:00p.m.
Speaker: Dr. Peter R. Rose—
“Geology Impacts History:
Influence of the Edwards
Plateau on Frontier History
of the Texas Hill Country”

Calendar of Meetings and Events Calendar of Area Monthly Meetings

Corpus Christi Geological/Geophysical Society.....	Third Wed.—11:30a.m.
SIPES Corpus Christi Luncheons.....	Last Tuesday—11:30a.m.
South Texas Geological Society Luncheons.....	Second Wed—noon San Antonio
San Antonio Geophysical Society Meetings.....	Fourth Tuesday
Austin Geological Society.....	First Monday
Austin Chapter of SIPES.....	First Thursday
Houston Geological Society Luncheons.....	Last Wednesday
Central Texas Section of Society of Mining, Metallurgy & Exp.....	2 nd Tues every other month In San Antonio



CCGS President's Letter

The luncheon meeting speaker this month at the Town Club (Wed. May 21) will be Dr. Peter R. Rose. His topic will be "Geology Impacts History: Influence of the Edwards Plateau on Frontier History of the Texas Hill Country."

The next CCGS event after the May luncheon:

- July 25 CCGS/CBGS Fishing Tournament Port Aransas

One of my goals as President of the CCGS was to restore field trips as an annual function of the society. To gain a historical perspective, all the CCGS field trip guidebooks from the library at the CCGS headquarters office were digitally scanned and reviewed. These guidebooks (except those available for sale at the BEG) will be placed in the CCGS web site. I found 27 guide books the following years:

1948

1950 – 1966 (17 continuous years, 1964 guidebook exists but was not found)

1968, 1970, & 1975

1978 – 1984 (7 continuous years)

There may be field trip guidebooks associated with GCAGS conventions in 1964, 1972, 1981, 1989, 1998 and 2007 that are not in the CCGS library. There is a field trip guidebook with the AAPG as co-sponsor in 2004. The Gulf Coast or South Texas was the destination for most field trips, including three uranium and two salt dome field trips. The remaining localities comprised nine trips to Mexico, eight to the Hill Country and one to Big Bend. The CCGS field trips had an average of seven members on the field trip committees and three leaders per trip. At the peak in 1961, there were 25 sponsors and 11 committee members for the field trip.

Why have field trips? Some quotes from the CCGS guidebooks provide possible answers:

"If oil companies, either large or small, prevent wide attendance on such trips by their geological personnel they make a serious error in my judgment. The area you are about to visit is fraught with potentialities for Gulf Coast oil finders." – Wallace Pratt, 1959

"I am thoroughly sold on the idea that a knowledge of surface conditions is essential for the best subsurface understanding." – A. I Levorson, 1959

"Pity then, as you observe, the geologist who has not seen these true scale models but has only a length of paper (log) which incompletely documents a mere "peek" every few miles. ...It should be clear, however, to that fortunate few when they return as to why the really great contributions to the science came during the time when the rocks alone told the story." – T. D. Cook, 1963

"The colors of the rocks are drab and the beauty of the country results mainly from its vastness, and the wild flowers and cactus that bloom in the spring. Unlike the layman, however, the beauty of the rocks to the geologist is in the story that is told." – Unknown Author, 1965

Bob Critchlow

CCGS President 2013 – 2014



TALKS TALKS TALKS **TALKS!!!**

We want your presentations!

THEME FOR 2014-15
**“NEW AND EMERGING
GEOSCIENCE TECHNOLOGIES
AND TECHNIQUES”**



We are constantly looking for great luncheon presentations for our monthly events.

Some of the best talks are those from our membership – individuals and companies with fresh ideas and emerging technologies or new discoveries to showcase.

Or...Is there a presentation you've heard at SEG, SPE, AAPG, GCAGS, HGS, SIPES, TAMUCC, TAMUK, Del Mar or another forum? Please let us know. We may like it, too.

Ideas? Presentations? References? To Volunteer?

Please Contact: Randy Bissell, CCGS VP 2014-2015
randyb@headington.com or (361) 816-4920 or (361) 885-0113



CBGS PRESIDENT’S LETTER

Starting to get talks for next year organized. If anyone has some topics or talks that you would like to hear, let Randy Bissell (doing the CCGS talks next year) or I know. Several good talks at the AAPG and in the SEG/AAPG Interpretation. If you have a specific talk you liked, let me know. There have been some developments in techniques and new technology/electronics in the last few years. Anyone interested in hearing a seismic acquisition overview?

The CBGS has discussed having some seismic short courses on different topics such as AVO Interpretation, Depth Conversion, Seismic Stratigraphy, etc. Similar to the format Stephen Thomas has set up for the Seismic Interpretation Class. Anyone interested? What topics?

Let me know.

Lonnie Blake

President, Coastal Bend Geophysical Society

Monthly Update

Seismic Crews - US Onshore	Current Month	Last Month	Difference	(Per SEG/Seismic Crew Reports Survey)
	Onshore/Offshore	Onshore/Offshore		
+	47/22	69	-2	
	Current Month	Last Month	Last Year - Monthly	(Per Texas RRC, last reported)
Texas Production	MMBO/BCF	MMBO/BCF	MMBO/BCF	
Oil	55.7	54.5	43.8	
Gas	552	561	523	
	Current Month	Last Month	Last Year - Monthly	
Texas Drilling Permits	1,682	1,791	1,744	
Oil wells	472	515		
Gas wells	72	121		
Oil and Gas wells	1,067	1,986		
Other	69	69		
Total Completions	3,142	3,607	1,405	
Oil Completions	2,768	3,131	1,006	
Gas Completions	232	398	351	
Other	142	78	48	

Parting thoughts:

Only the curious will learn and only the resolute overcome the obstacles to learning. The quest quotient has always excited me more than the intelligence quotient.

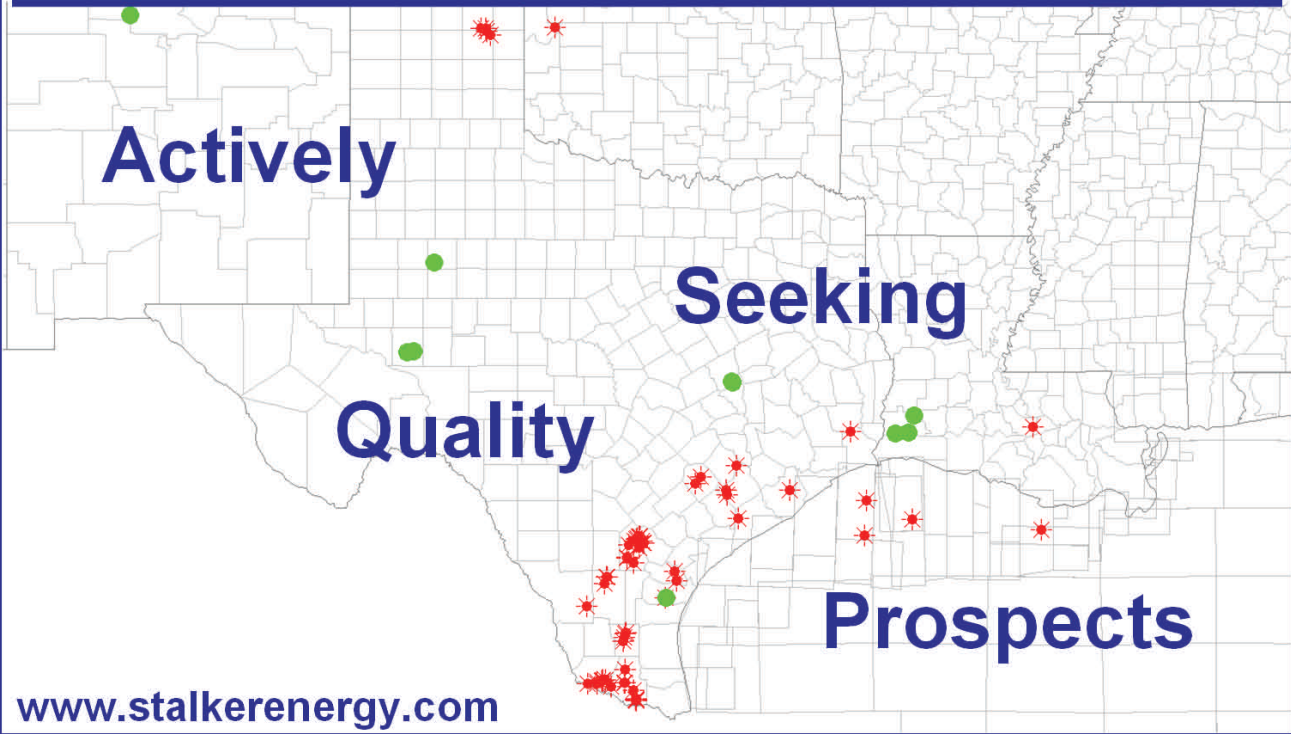
Author: [Eugene S. Wilson](#)

SPONSORS

Austin Office:
 1717 W. 6th Street, Ste 230
 Austin, Texas 78703
 512.457.8711
 Contact: Bill Walker, Jr.
 bwalker@stalkerenergy.com



Houston Office:
 2001 Kirby Drive, Suite 950
 Houston, Texas 77019
 713.522.2733
 Contact: Todd Sinex
 tsinex@stalkerenergy.com



**AS GOOD AS OUR WORD
 TAP INTO OUR RESERVOIR**



www.dawson3d.com
 509 W Wall, Suite 800
 Midland, Texas 79701
 432-684-3000
800-D-DAWSON
 Houston, Texas 713-917-6772
 Denver, Colorado 303-723-0440
 Oklahoma City, Oklahoma 405-848-7512
 Michigan 248-446-9533

EXPERIENCE For over a half-century Dawson has helped its clients succeed. In both seismic acquisition and processing, we deliver high quality data that gets clear-cut results. From field equipment to software, we put the latest technologies into the hands of seasoned professionals who have geophysical knowledge specific to all major U.S. basins. Decades of acquiring data and imaging objectives to provide total subsurface picture. That's what our experience gives you.



Planning • Design • Acquisition • Processing • Results



PASSION FOR TEXAS

Exceeding expectations for 80 years.

- Covering 3,000 square miles of Texas with our multi-client seismic library
- Increasing seismic productivity and quality with **UNITE** cableless recording and advanced vibroseis acquisition
- Improving subsurface resolution with advanced subsurface imaging
- Maximizing recovery with high-end reservoir characterization technology and services from **Hampson-Russell** and **Jason**
- De-risking with additional multi-client library products including gravity, magnetic and geological studies
- Storing and transforming your data into knowledge with Data Management Services

cgg.com/texas



LUNCHEON MEETING ANNOUNCEMENT

Corpus Christi Geological Society & Coastal Bend Geophysical Society

Wednesday, May 21, 2014

Location: The Town Club; 6th floor

Bar Sponsor: Wes Gisler and Mike Gisler: Gisler Brothers Logging

Student Sponsor: Core Lab (Juan Cabasos) and CCGS

Time: 11:30 AM, Lunch served at 11:45 AM, speaker at noon

Cost: Members \$25 (\$3 Surcharge if no reservation, No-shows will be invoiced)

Reservations: Please make your reservations by email allison@aaoperating.com

Geology Impacts History: Influence of the Edwards Plateau on Frontier History of the Texas Hill Country

Peter R. Rose

Biography

Dr. Pete Rose (Ph. D., Geology, University of Texas, Austin) has been a professional geologist for 54 years, specializing in Petroleum Geology, E&P Risk Analysis, and Mineral Economics.

Before going on his own in 1980 as an independent prospector and consultant, he worked for Shell Oil Company, the United States Geological Survey, and Energy Reserves Group, Inc, a small-cap Independent.

After 10 years as an internationally-recognized authority on economic risking of exploration drilling ventures, he founded Rose & Associates, LLP, in 1998. Pete retired in 2005; the firm continues as the global standard among consulting companies in that field.

Pete wrote the definitive geological monograph on the Edwards Limestone of Texas. His 2001 book, *Risk Analysis and Management of Petroleum Exploration Ventures* is now in its 7th printing, and has been translated into Chinese, Japanese, and Russian. He has authored or co-authored more than 75 articles on a wide variety of geological topics.

In 2005 he was the 89th President of the American Association of Petroleum Geologists, an international organization that is the largest geological association in the world (>37,000 members).

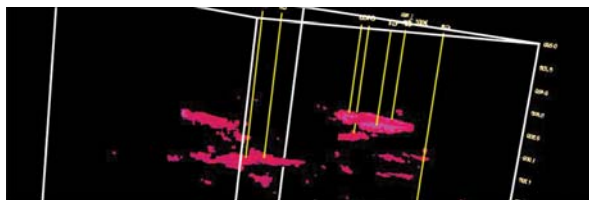
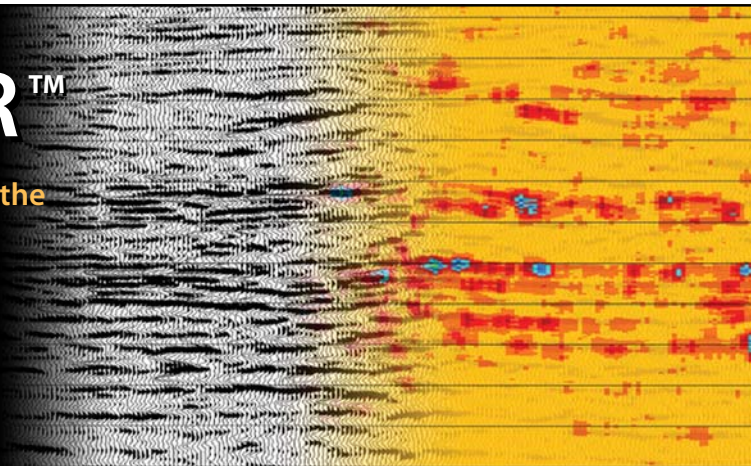
In 2006-07 he was a member of the National Petroleum Council, involved with their summary of the global energy situation, *Facing the Hard Truths about Energy*, and was also deeply involved in successful efforts to encourage the U. S. Securities and Exchange Commission to modernize its rules governing estimation and disclosure of oil and gas reserves.



DRILL SMARTER™

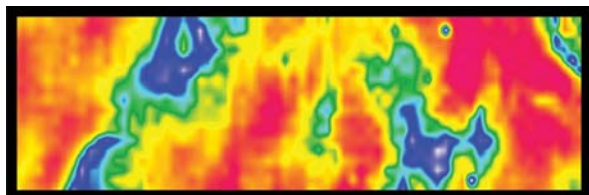
Proprietary Post-Stack Technologies to Aid in the Analysis of Seismic Data and Identification of Direct Hydrocarbon Indicators

Reduce risk • Increase exploration success
Stay ahead of the competition • Improve your ROI



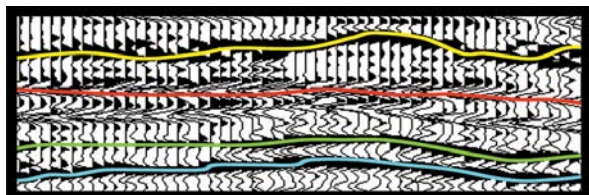
EnergyAbsorptionSM

Measures high frequency absorption indicating the location of increased porosity and potential gas accumulations



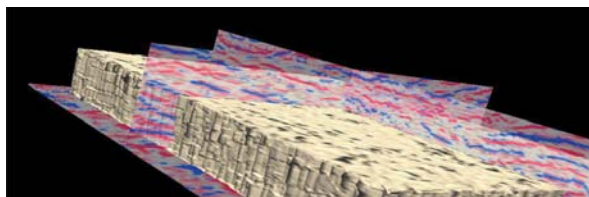
SpecViewSM

Spectral Decomposition identifying hidden stratigraphic information and subtle anomalies within a specific horizon



HiResSM

Recovers detail lost in the standard seismic response



SemCubeSM

Measures a semblance response indicating faulting, fracturing and other anomalous areas

SeismicVentures[®]

For more information, contact Sara Davis at s_davis@seismicventures.com or (281) 240-1234 x206

Seismic Ventures, Inc. • 12603 Southwest Freeway, Suite 600 • Stafford, Texas 77477
t: 281-240-1234 • f: 281-240-4997 • www.seismicventures.com

In 2013, the Geological Society of London awarded Peter R. Rose its prestigious Petroleum Group Medal for lifetime contributions to Petroleum Geology, and in 2014 the American Association of Petroleum Geologists will honor him with its Halbouty Outstanding Leadership award.

Pete is a 5th-generation Texan. He and his wife Alice have 5 children and 8 grandchildren, and divide their time between Austin and their El Segundo Ranch near Telegraph, Texas. In retirement, he has taken up a new career as a historian: in September 2012, Texas Tech University published his book, *The Reckoning: the Triumph of Order on the Texas Outlaw Frontier*, about the coming of Order and Law to the western Hill Country and Edwards Plateau regions of Texas (1873-1882).

Abstract

The geological attributes of the Edwards Plateau exerted a powerful influence on the history of the Texas Hill Country during the late 19th century. The Plateau is an immense tableland that covers more than 25,000 mi² of west-central Texas, the geomorphic expression of the resistant Edwards Limestone. Rainfall sinks into permeable limestone terranes on top of the Plateau, rather than running off. Because the formations underlying the porous Edwards Limestone are relatively impervious, water accumulates in the lower Edwards, forming an extensive regional aquifer. This aquifer is the source of all the springs around the Plateau margins. The consequences of this geology are unusual: a vast, elevated, waterless plain, dissected around its margins by limestone canyons fed by perennial springs that form the headwaters of all rivers in west-central Texas.

Because of its rugged margins and the absence of dependable surface water on top, the Plateau was a formidable wilderness barrier to permanent habitation. Early road networks, as well as the Western Beef Trail, mostly skirted the Plateau. Marauding Indians used the thick-turfed plateau uplands as wilderness war trails to fall suddenly upon unsuspecting settlements around the plateau margins, thus inhibiting permanent Anglo settlement.

In 1873 opportunistic Anglo-Celtic cattlemen and homesteaders began settling the apron of stream-laced lands that bordered the Edwards Plateau on the east. Criminal confederations flourished in isolated locations for many reasons: 1) sparse population, 2) lack of organized government and Law, 3) access to northbound trail herds, 4) clandestine livestock markets along the Mexican border, 5) abundant hiding places around the dissected margins of the Plateau, and 6) adjacent wilderness as a waiting refuge from pursuing lawmen.

Sustained campaigns by Texas Rangers, aiding fearful settlers and beleaguered county lawmen, gradually brought order to the region. New technologies ended the frontier period. Regional railroads skirting the Edwards Plateau put an end to the cattle drives. The plateau uplands began to be settled when cable-tool drilling and windmills provided reliable water from the Edwards aquifer, and barbed wire allowed ranchers to control grazing. The frontier era in the western Hill Country of Texas was over.

SPONSORS

SEI®

YOUR

**Full Service
National
Seismic Data
Marketing Firm**

Seismic Exchange, Inc.

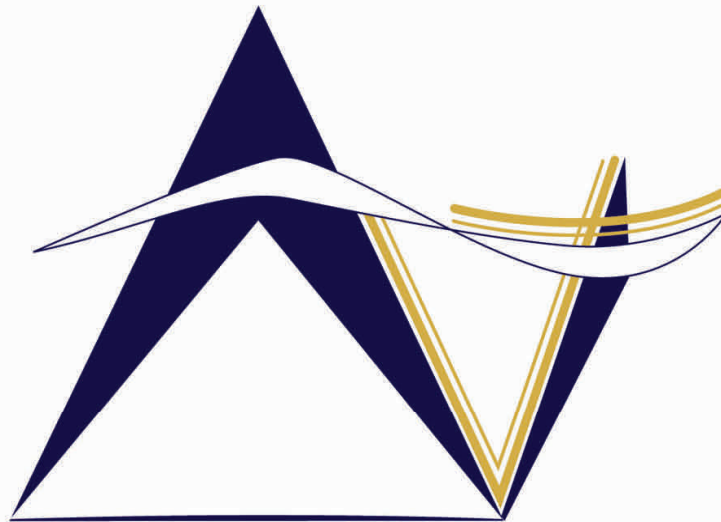
**Corpus Marketing Contact:
Jeff Autrey
888-8122 (Direct to Houston)**

**Strategic Speculative Surveys
Geophysical Data Marketing & Management**

**Corpus Office
361-884-2936**

CORPUS CHRISTI DALLAS DENVER HOUSTON NEW ORLEANS OKLAHOMA CITY

11050 Capital Park Dr., Houston, TX 77041 713-623-8300 FAX 832-590-5290



VirTex Operating Company, Inc.

*615 North Upper Broadway, Suite 525, Corpus Christi, Texas 78477
(361) 882-3046*

SPONSORS



Since 1905

Royal Exploration Company, Inc.

Bank of America

500 N. Shoreline Blvd. Suite 807 N
Corpus Christi, Texas 78471-1008

Alan Costello - Geologist Robert Rice - Geologist
Matt Hammer - Exploration Manager

Telephone: 361-888-4792 Fax: 361-888-8190



Gulf Coast Onshore Data Resource

Synthetic seismograms

Velocity surveys

Digital sonic log database

WWW.PETROPHYSICS.COM

210-691-2333



LMP PETROLEUM, INC.

EXPLORING SOUTH TEXAS

615 N. Upper Broadway
Suite 1770
Wells Fargo Bank Building
Corpus Christi, Texas 78401-0773

361-883-0923
Fax: 361-883-7102
E-mail: geology@lmpexploration.com

Fossil Hunt 2014





SPONSORS



Manti Resources, Inc

800 N. Shoreline Dr.

Corpus Christi, Texas 78401

(361) 888-7708



EOG Resources Performance You Can Count On

■ **The Dynamics of Performance**

As EOG adds new plays to its portfolio, the company relies on the proven performance of its operations in the United States, Canada, Trinidad, the United Kingdom and China.

■ **The Technology of Performance**

Explorationists fuel EOG's penchant for "growth through the drillbit" by generating exciting new drilling opportunities.

■ **The Consistency of Performance**

EOG continues to focus on a long-term strategy that emphasizes financial returns, a strong balance sheet and organic production growth.

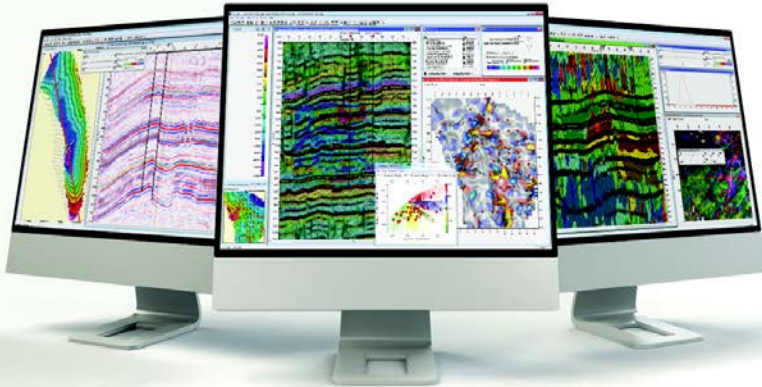


EOG Resources, Inc.
Corpus Christi

539 N. Carancahua, Suite 900
Corpus Christi, TX 78401

(361) 883-9231
www.eogresources.com

SPONSORS

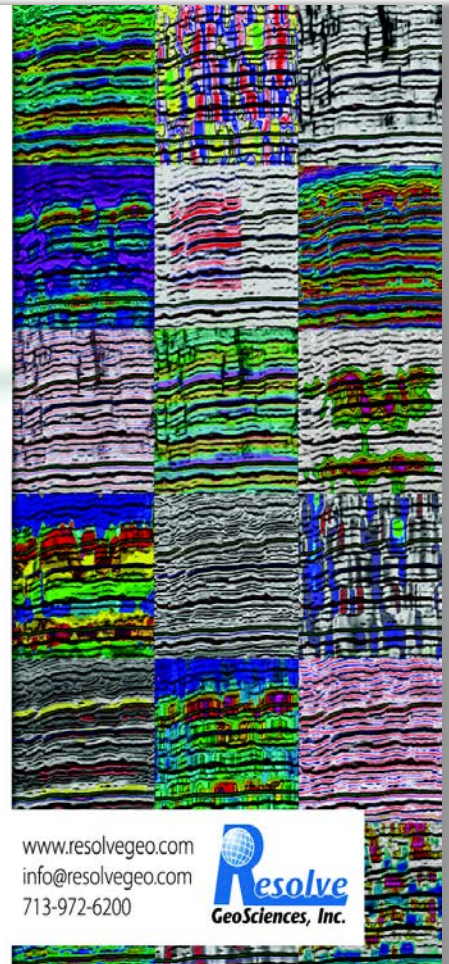


Seismic Attributes, Simplified.

Most attribute workflows are backwards, forcing you to endure timely computations, loading procedures and parameter adjustments before seeing actual results. This makes it hard to effectively narrow down the key attributes for your prospects.

Resolve GeoSciences eliminates that problem by allowing you to immediately scan through a variety of properly conditioned, ready-to-view attributes, with color palettes and ranges set specifically for your project. The key is our powerful attribute analysis software, SeisShow, which is delivered complimentary with our services.

Contact us to find out more about SeisShow and our services:
[Seismic Attributes](#) | [HQ Frequency Enhancement](#) | [Spectral Decomposition](#)



www.resolvegeo.com
info@resolvegeo.com
713-972-6200



Serving Corpus Christi for over 20 years

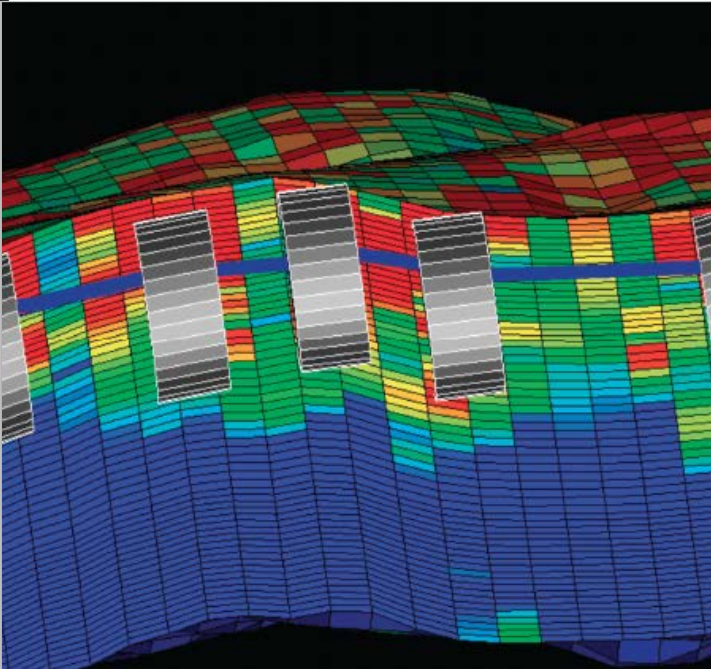
 **mail express**

501 S. Tanchua St.
Corpus Christi, TX 78401

CALL 888-4332 for details - Ask for Anne


- We process 1st class mail with a direct discount to you
- No meter procedure change except for the amount you meter your envelopes

SPONSORS



PRODUCTION FOCUSED SEISMIC


Global's E&P Services translates seismic images and attributes into meaningful knowledge to improve your bottom line finding and development costs. We integrate seismic, microseismic, well logs, core data, petrophysical analyses, completion information, and production data to help optimize all phases of your E&P execution in both conventional and unconventional reservoirs.



Global Geophysical Services, Inc.
13927 S. Gessner Road • Missouri City, TX
tel +1 713-972-9200

GLOBAL E&P SERVICES

www.globalgeophysical.com

<p>www.GeoSteering.com</p> <p>281-573-0500 info@geosteering.com</p>	<p>Personnel with degrees & 20+ years of oilfield experience</p> <p>Proprietary software</p> <p>TST interpretation for GR only jobs</p> <p>Image displays / interpretation for jobs with azimuthal GR, resistivity or density</p> <p>Resistivity modelling / interpretation for jobs with LWD propagation resistivity</p> <p>Real-time (always)</p>
<p>Free introductory consultation with modeling: let us demonstrate whether images or propagation resistivity could add value to your well.</p> 	

SPONSORS



Winn Exploration Co., Inc.

Actively Seeking High Quality
Drilling Prospects

Contacts:

Mike Layman (Geophysicist)	361-844-6922
Tom Winn (Geologist)	361-844-6992
Southern Winn (Geologist)	361-844-6998

800 North Shoreline Blvd.
19th Floor, North Tower
Corpus Christi, Texas 78401

Office: 361-844-6900 Fax: 361-844-6901

A Great Place For Business

In the heart of the Business District
Broadway at Leopard

- Onsite Management
- Conference Room
- Deli & Vending Room
- Security Card Access
- High Speed Elevators
- View of Corpus Christi Bay

COMMITTED TO EXCELLENCE
Yesterday • Today • Tomorrow

The
600
BUILDING

Contact
Ellen Blasingame
698-6000

ecblasingame@netscape.net



SPONSORS

Ellsworth Properties

615 N. Upper Broadway St. Suite 1910
Corpus Christi, TX 78477

Office: (361) 887-0994
Fax: (361) 887-9726
Mobile: (361) 438-5727
Toll Free: (800) 540-0994

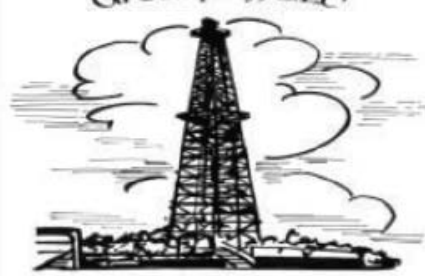
Oil & Gas Investments

- Operating in South Texas for over 27 years.
- Multiple drilling and exploration campaigns currently in progress.
- Quality Operations Management along with state-of-the-art research and development.



Ellsworth Properties: 361.887.0994 or www.HPEOIL.com

Victor P. Smith
Oil Company, L.L.C.



Jackson, Mississippi

**Interested in Ideas and Prospects in Texas
Will Lease and Operate
Confidentiality Maintained**

Jeanne S. F. Phelps
281/398-5208 jspfhelps@yahoo.com
SIPES # 2509

CHARGER EXPLORATION

Michael L. Jones
President/Geologist

Onshore Gulf Coast Prospect Generation and Consulting

1001 McKinney Street, Suite 801 Houston, TX 77002
Ofc: 713.654.0080 Cell: 713.398.3091
Email: mjones@chargerexploration.com
www.chargerexploration.com

SPONSORS

Headington Oil Company LLC



Operating with excellence in South Texas since 1990.

902 North Tower – Bank of America Building – Corpus Christi, Texas
(361) 885-0110

NFI



Nueces Energy, Inc.

P.O. Box 252
Corpus Christi, Texas 78403
Office: (361) 884-0435
Fax: (361)-654-1436
www.nuecesland.com

Nueces Energy, Inc. is a complete land services company in the business of providing professional landmen and project management to various energy related jobs primarily in the oil and gas industry.

With over 30 years of industry experience, we specialize in determining surface and subsurface ownership and negotiating and acquiring contracts, rights of way agreements, and easements to provide our clients with the legal right to explore and develop oil and gas resources. We provide a full service land company capable of managing any project no matter how large or small.



THUNDER EXPLORATION, INC.

Celebrating 30+ years of prospect generation and exploration in the following South Texas plays and trends.

Frio	San Miguel	Edwards
Jackson	Austin Chalk	Pearsall
Yegua	Eagle Ford	Sligo
Wilcox	Buda	Cotton Valley
Olmos	Georgetown	Smackover

Thunder is currently seeking non-operated working interest participation in projects and prospects.

Contact **Walter S. Light Jr.**
President/Geologist

713.823.8288
EMAIL: wthunderx@aol.com

SPONSORS

That old gas kick could be your next discovery!

Characterization of Unconventional Reservoirs

Traditional methods of core analysis cannot yield acceptable results when applied to unconventional reservoirs such as gas shales, tight gas sands, coals and thin bed formations.

Production controls on these reservoirs are not limited to hydrocarbons in place, permeability and porosity. Pay identification requires an understanding of complex lithologies and exotic mineralogies.

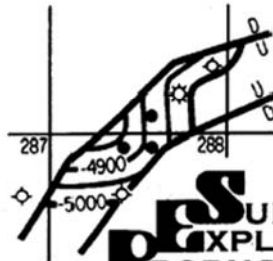
Only Core Lab offers the comprehensive range of unique technologies required to optimize your unconventional reservoirs.

Geological Petrophysical Geomechanical Geochemical



To learn more about our unique unconventional reservoir evaluation services contact Core Lab. (713) 328-2121 or (361) 289-5457 psinfo@corelab.com

© 2005 Core Laboratories. All rights reserved.



PSUEMAUR
EXPLORATION &
PRODUCTION, LLC

1000 Frost Bank Plaza
802 North Carancahua Street
Corpus Christi, TX 78470-0400
Phone: (361) 884-8824
Fax: (361) 884-9623

*Exploring Texas
since 1968*

SPONSORS

**Serving The Oil & Gas Industry On The Texas Coast
For More Than 30 Years**



- ◆ Pre-lease Environmental Constraints Analysis
- ◆ Seismic Permitting and Bio-monitoring
- ◆ Access Evaluations on Land, Bays and Wetland Areas
- ◆ Corps of Engineers Permitting for Seismic, Access, Drill Sites, Production Facilities and Pipelines
- ◆ Federal Refuge and Padre Island National Seashore Permitting
- ◆ Endangered Species, Seagrass, Wetland and Oyster Surveys
- ◆ Wind Farm Permitting

Sandy Belaire, Owner/President
Charlie Belaire, VP
cell: (713) 557-4083

phone: (361) 729-2948 fax: (361) 729-2970
email: estuary123@aol.com
www.belaireenv.com

WELLSITE GEOSCIENCE SERVICES



**When time is money,
Wellsite Geoscience is
money well spent.**

Whether you're exploring a basin, producing a well or completing a shale play, time is money. That's why Weatherford Laboratories brings a suite of formation evaluation technologies right to the wellsite. Utilizing mud gas and cuttings, these technologies provide detailed data on gas composition, organic richness, mineralogy and chemostratigraphy in near real time. As a result, operators now have an invaluable tool to assist with sweet spot identification, wellbore positioning, completion design and hydraulic fracturing. We call it Science At the WellSite. You'll call it money well spent.

SCIENCE AT THE WELLSITE™
www.weatherfordlabs.com

Formation Evaluation | Well Construction | Completion | Production

©2013 Weatherford. All rights reserved

 **Weatherford**
LABORATORIES

GEO LINK POST

<http://www.lib.utexas.edu/books/landsapes/index.php> Free service. Rare, fragile, hard-to-find, public domain documents covering various topics about the landscape of Texas. Includes the Texas Geological Survey from 1887 until 1894.

USGS TAPESTRY OF TIME AND TERRAIN <http://tapestry.usgs.gov> The CCGS is donating to all of the 5th and 6th grade schools in the Coastal Bend. Check it out--it is a spectacular map. You might want to frame one for your own office. The one in my office has glass and a metal frame, and It cost \$400 and it does not look as good as the ones we are giving to the schools.

FREE TEXAS TOPOS'S <http://www.tnris.state.tx.us/digital.htm> these are TIFF files from your state government that can be downloaded and printed. You can ad them to SMT by converting them first in Globalmapper. Other digital data as well.

FREE NATIONAL TOPO'S [http://store.usgs.gov/b2c_usgs/b2c/start/\(xcm=r3standardpitrex_prd\)/do](http://store.usgs.gov/b2c_usgs/b2c/start/(xcm=r3standardpitrex_prd)/do) go to this webpage and look on the extreme right side to the box titled TOPO MAPS DOWNLOAD TOPO MAPS FREE.

<http://www.geographynetwork.com/> Go here and try their top 5 map services. My favorite is 'USGS Elevation Date.' Zoom in on your favorite places and see great shaded relief images. One of my favorites is the Great Sand Dunes National Park in south central Colorado. Nice Dunes.

<http://antwrp.gsfc.nasa.gov/apod/asropix.html> Astronomy picture of the day--awesome. I click this page everyday.

<http://www.spacimaging.com/gallery/ioweek/iow.htm> Amazing satellite images. Check out the gallery.

<http://www.ngdc.noaa.gov/seg/topo/globegal.shtml> More great maps to share with kids and students.

www.ccgeo.org Don't forget we have our own we page.

<http://terra.nasa.gov/gallery/> Great satellite images of Earth.

www.ermaper.com They have a great free downloadable viewer for TIFF and other graphic files called ER Viewer.

<http://terrasrver.com> Go here to download free aerial photo images that can be plotted under your digital land and well data. Images down to 1 meter resolution, searchable by Lat Long coordinate. Useful for resolving well location questions.

TYPE LOGS OF SOUTH TEXAS FIELDS by Corpus Christi Geological Society

NEW (2009-2010)TYPE LOGS IN RED; ***2011;**

lost now found

ARANSAS COUNTY

Aransas Pass/McCampbell Deep
Bartell Pass
Blackjack
Burgentine Lake
Copano Bay, South
Estes Cove
Fulton Beach
Goose Island
Half Moon Reef
Nine Mile Point
Rockport, West
St. Charles
Tally Island
Tract 831-G.O.M. (offshore)
Virginia

BEE COUNTY

Caesar
Mosca
Nomanna
Orangedale(2)
Ray-Wilcox
San Domingo

Tulsita Wilcox

Strauch_Wilcox

BROOKS COUNTY

Ann Mag
Boedecker
Cage Ranch
Encintas
ERF
Gyp Hill

Gyp Hill West

Loma Blanca
Mariposa
Mills Bennett
Pita
Tio Ayola
Tres Encinos

CALHOUN COUNTY

Appling
Coloma Creek, North
Heyser
Lavaca Bay
Long Mott
Magnolia Beach
Mosquito Point
Olivia
Panther Reef
Powderhorn
Seadrift, N.W.
Steamboat Pass
Webb Point
S.E. Zoller

CAMERON COUNTY

Holly Beach
Luttes
San Martin (2)
Three Islands, East

Vista Del Mar

COLORADO COUNTY

E. Ramsey
Graceland N. Fault Bik
Graceland S. Fault Bik

DEWITT COUNTY

Anna Barre
Cook
*******Nordheim**
Smith Creek
Warmsey

Yorktown, South

DUVAL COUNTY

DCR-49
Four Seasons
Good Friday
Hagist Ranch
Herbst
Loma Novia
Petrox
Seven Sisters
Seventy Six, South
Starr Bright, West

GOLIAD COUNTY

Berclair
North Blanca
Bombs
Boyce
Cabeza Creek, South
Goliad, West
St Armo

HIDALGO COUNTY

Alamo/Donna
Donna
Edinburg, West
Flores-Jeffress
Foy
Hidalgo

LA Blanca

McAllen& Pharr
McAllen Ranch
Mercedes
Monte Christo, North
Penitas
San Fordyce
San Carlos
San Salvador
S. Santallana
Shary
Tabasco
Weslaco, North
Weslaco, South

JACKSON COUNTY

Carancahua Creek
Francitas
Ganado & Ganado Deep
LaWard, North
Little Kentucky

Maurbro

StewartSwan Lake

Swan Lake, East
Texana, North
West Ranch

JIM HOGG COUNTY

Chaparosa
Thompsonville,N.E.

JIM WELLS COUNTY

Freebom
Hoelsher
Palito Blanco
Wade City

KARNES COUNTY

Burnell
Coy City
Person
Runge

KENEDY COUNTY

Candelaria
Julian
Julian, North
Laguna Madre
Rita
Stillman

KLEBERG COUNTY

Alazan
Alazan, North
Big Caesar
Borregos
Chevron (offshore)
Laguna Larga
Seeligson
Sprint (offshore)

LA SALLE COUNTY

*****Pearsall**

LAVACA COUNTY

Hallettsville
Hope
Southwest Speaks
Southwest Speaks Deep
LIVE OAK COUNTY

Atkinson

Braslau
Chapa
Clayton
Dunn
Harris
Houdman
Kittie West-Salt Creek
Lucille
Sierra Vista
Tom Lyne
White Creek
White Creek, East

MATAGORDA COUNTY

Collegeport

MCMULLEN COUNTY

Arnold-Weldon

Brazil
Devil's Waterhole
Hostetter
Hostetter, North
NUECES COUNTY
Agua Dulce (3)
Arnold-David
Arnold-David, North
Baldwin Deep
Calallen
Chapman Ranch
Corpus Christi, N.W.
Corpus Christi West C.C.
Encinal Channel
Flour Bluff/Flour Bluff, East
GOM St 9045(offshore)
Indian Point
Mustang Island
Mustang Island, West
Mustang Island St.
889S(offshore)
Nueces Bay/Nueces Bay
West

Perro Rojo

Pita Island
Ramada
Redfish Bay
Riverside
Riverside, South
Saxet
Shield
Stedman Island
Turkey Creek

Perro Rojo

Pita Island
Ramada
Redfish Bay
Riverside
Riverside, South
Saxet
Shield
Stedman Island

Turkey Creek

REFUGIO COUNTY

Bonnieview/Packery Flats
Greta
La Rosa
Lake Pasture
Refugio, New
Tom O'Connor

SAN PATRICIO COUNTY

Angelita East
Commonwealth
Encino
Enos Cooper
Geronimo
Harvey
Hiberia
Hodges
Mathis, East
McC Campbell Deep/Aransas Pass
Midway
Midway, North
Odem

Plymouth

Portilla (2)
Taft
Taft, East

STARR COUNTY

El Tanque
Garcia
Hinde
La Reforma, S.W.

Lyda

Ricaby
Rincon
Rincon, North
Ross
San Roman
Sun
Yturria

VICTORIA COUNTY

Helen Gohike, S.W.
Keeran, North
Marcado Creek
McFaddin
Meyersville
Placedo

WEBB COUNTY

Aquilares/Glen Martin
Big Cowboy
Bruni, S.E.
Cabezon
Carr Lobo
Davis
Hirsch
Juanita
Las Tiendas
Nicholson
O'Hem
Olmitos
Tom Walsh

WHARTON COUNTY

Black Owl

WILLACY COUNTY

Chile Vieja

La Sal Vieja
Paso Real
Tenerias
Willamar

ZAPATA COUNTY

Benavides
Davis, South
Jennings/Jennings, West
Lopeno
M&F
Pok-A-Dot

ZAVALA COUNTY

El Bano

Call Coastal Bend Geological Library, Maxine: 361-883-2736
1 log -- \$10 each, 5-10 logs \$9 each and 10 + logs \$8.00 each – plus postage

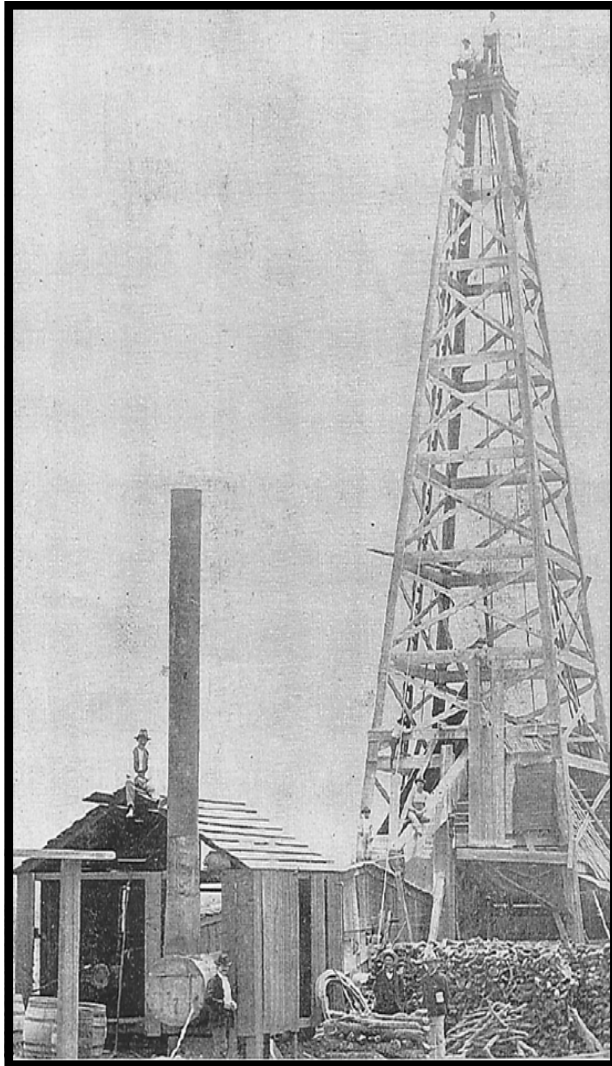
OIL MEN

TALES FROM THE SOUTH TEXAS OIL PATCH
DVD

MEMBER PRICE \$25
NONMEMBER \$30



To Order DVD
Sebastian Wiedmann
swiedmann@braytoncc.com
If mailed add \$5



Corpus Christi Geological Society
C/O Javelina Press
P. O. Box 60181
Corpus Christi, TX 78466

Order Form

Mail order form for Wooden rigs-Iron Men. The price is \$75 per copy, which includes sales tax, handling, and postage

Name _____

Address _____

City, State, Zip _____

No. of books _____ Amount enclosed _____

Send to Corpus Christi Geological Society Book Orders

P. O. Box 60181

Corpus Christi, TX. 78466 Tax exempt# if applicable _____

Wooden Rigs—Iron Men

The Story of Oil & Gas in South
Texas

By Bill & Marjorie K. Walraven

Published by the
Corpus Christi Geological Society



4201 FM 1960 West, Ste. 245
Houston, TX 77068
Office: 832-249-1000
Fax: 832-249-1007
Cell: 713-412-9133

8610 N. New Braunfels, Ste. 517
San Antonio, TX 78217
Office: 210-826-2553
Fax: 210-826-2570

520 Starr St.
Corpus Christi, TX 78401
Office: 361-888-8288
Fax: 361-888-4617
Cell: 361-816-6936

Randy Acock, P.E.
President
randy@aeaicc.com
www.aeaicc.com

david becker

David Becker
exploration
geologist

geologist

o: (361) 884-3613
f: (888) 869-2011

600 leopard st. ste 706
corpus christi. tx 78473

dkbecker1137@sbcglobal.net

Bergsma Consulting

Michael Bergsma
Geophysicist

Office: 615 Leopard, Suite 430
Corpus Christi, Texas 78476
Mailing: P.O. Box 955
Corpus Christi, Texas 78403

Cell: 361.537.6964
Home: 361.855.4515
Fax: 1.877.496.0316
e-mail: bergsmaconsulting@davlin.net



Bier Seis, Inc.
Geophysical Consulting

David Biersner, President
19446 Arrowood Place
Garden Ridge, Tx 78266
Cell: 281.744.7457
E-Mail: bierseis@yahoo.com

Field Quality Control
Program Management
Permit Management
Seismic Line Clearing
Supervision



Dawn S. Bissell
Geoscientist

Advent Geoscience Consulting, LLC

Phone: 361-960-2151
Fax: 961-854-2604
Email: bissells@swbell.net

253 Circle Drive
Corpus Christi, TX 78411
Home: 361-854-2635

MUD LOGGING SERVICE



Since 1961

MIKE BULLARD

(361) 221-9717 Office
(361) 522-1245 Cell
E-Mail md_bullard@sbcglobal.net

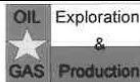
(361) 211-9715 Fax
P.O. Box 1011
Kingsville, Tx 78363

HYDROCARBON OPERATING, INC
HYDROCARBON HORIZONS, INC.
600 Leopard St., Suite 1724
Corpus Christi, Texas 78473

Brian S. Calhoun

Office 361-887-6655 Fax 361-887-6341
Cell 361-877-7557
Email: BCalhoun_HOI@sbcglobal.net

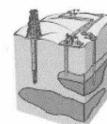
TEXAS LONE STAR
PETROLEUM CORPORATION



JEFF COBBS
President - Geologist

615 Leopard St., Suite 336 Office(361) 883-2911
Corpus Christi, Texas 78401-0610 Fax (361) 883-2151
jc@tlspc.com Cell (361) 960-0530

Jim Collins
Geoscientist



361.537.4034
jim@gulfcoastgas.com



SV Energy Company, LLC
Conventional Thinking. Unconventional Results.

Frank G. Cornish
Consulting Geologist
615 N. Upper Broadway, Suite 1770
Corpus Christi, TX 78401
frank.cornish@gmail.com

361-883-0923 (o)
1-800-510-5810 (f)
361-563-9184 (m)

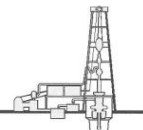


Croft Exploration

Wayne S. Croft
Geologist
SIPES #2318

5021 Graford Place • Corpus Christi, Texas 78413
(361) 991-7450 Fax (361) 991-5790

TOM DAVIDSON
GEOLOGIST



28550 IH-10 WEST SUITE #4
BOERNE, TEXAS 78006

BUS: (210) 844-8963
RES: (830) 981-5883
FAX: (830) 981-5567
CEL: (210) 844-8963



E-MAIL
tomgeo@gvctc.com

ONE APEX ENERGY, INC

CHRISTIAN DOHSE
GEOLOGIST

(361) 877-3431
CHRISTIAN.DOHSE@GMAIL.COM
CORPUS CHRISTI, TX



VENTEX
Oil & Gas, Inc.

Thomas V. Dubois
Geologist

2627 CR 312
Yoakum, Texas 77995

Phone (361) 215-0223
Email: tdubois@uswide.net

Fields Exploration, Inc.

545 N. Upper Broadway, Suite 1100 East
Corpus Christi, Texas 78476

Bruce W. Fields, President
Byron W. Fields, Vice President 361-883-4721
Craig B. Fields, Vice President 361-883-4715 Fax



VENTEX
Oil & Gas, Inc.

Email mfraney@uswide.net

MATTHEW FRANEY
Geologist

600 Leopard
Suite 904
Corpus Christi, Texas 78473

Phone (361) 888-6327
FAX (361) 882-8820

GISLER BROTHERS LOGGING Co., Inc.

P.O. BOX 485
106 E. MAIN

RUNGE, TX 78151



Wes Gisler
Bus. (830) 239-4651
Mobile (361) 676-1369

Home (830) 239-4914
Direct (830) 239-4693
wes@gislerbrotherslogging.com

Robert Graham
President
grexploration@gmail.com

Phone 361-882-7681
Fax 361-882-7685
Cell 361-774-3635

GrX Inc.

Exploratory Prospects & Production Development

Mail:
P. O. Box 1843
Corpus Christi, Texas
78403-1843

Office:
606 N. Carancahua, Ste. 610
Corpus Christi, Texas
78401-0634



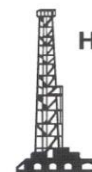
RAY GOVETT, Ph. D.
CONSULTING GEOLOGIST
361-855-0134

EPL
OIL & GAS, INC.

EPL Oil & Gas, Inc.
919 Milam
Suite 1600
Houston, TX 77002
www.eplweb.com

Kathy Hardy
Lead Asset Geoscientist

Direct: (713) 815-3292
Cell: (832) 236-7442
Fax: (713) 815-3391
khardy@eplweb.com



HART EXPLORATION, LLC.

RICK HART
Geologist / Owner

P.O. Box 729
Coldspring, Texas 77331

Cell: 512-626-3053
Email: hartexploration@aol.com

RIVIERA EXPLORATION, LLC

H. TONY HAUGLUM
President

600 LEOPARD ST.
SUITE 1704
CORPUS CHRISTI
TEXAS 78401

PHONE 361.884.1811
FAX 361.884.8071
E-MAIL THAUGLUM@SWBELL.NET

GEORGE H. HOBBS
Drilling and Completion Supervision
AFE and Well Design Preparation

P.O. Box 1711
San Benito, Texas 78586

Home (956) 399-9718
Mobile (956) 605-4563
george_hobbs@msn.com



BRENT F. HOPKINS
PRESIDENT AND CEO
GEOLOGIST

FROST BANK PLAZA
802 N. CARANCAHUA, SUITE 1000
CORPUS CHRISTI, TEXAS 78401-0015

OFFICE: (361) 884-8824
FAX: (361) 884-9623
RES: (361) 643-8373
CELL: (361) 215-4855
Email: brenth@suemaur.com

CHARGER EXPLORATION

MICHAEL L. JONES
PRESIDENT/GEOLOGIST

1001 MCKINNEY STREET
STE. 801
HOUSTON, TX 77002

MAIN (713) 654-0080
FAX (713) 654-0086
CELL (713) 398-3092

mjones@chargerexploration.com
www.chargerexploration.com



Louis R. Lambiotte
Geologist

LMP Petroleum, Inc.
615 N. Upper Broadway, Suite 1770
Corpus Christi, TX 78477
Tel: (361) 883-0923
Fax: (361) 883-7102
E-mail: geology@LMPexploration.com



Allen Lassiter, Geologist

711 N. Carancahua St., #906
Corpus Christi, TX 78401
alassiter@reveilleoilandgas.com

O: 361-884-6886
F: 361-884-9102
C: 361-960-5106



2209 N. Padre Island Drive, Suite W
Corpus Christi, Texas 78408
United States

Sara Leal
Core Evaluation Specialist

+1.361.884.0683 Main (24 Hr)
+1.361.249.0985 Direct
+1.361.884.8283 Fax

sara.leal@weatherfordlabs.com
www.weatherfordlabs.com



Tom Long
President

600 Leopard Street, Suite 1310
Corpus Christi, Texas 78473
Phone (361) 698-6060
Cell (361) 813-4002
Fax (361) 698-6066
Email tom@sevencs.com
www.sevencs.com



Vicki Marlett
Sr. Account Manager

972-690-1122 x132
Fax: 972-690-1163
Cell: 214-557-0815
e-mail: vmarlett@geotrace.com
2435 N. Central Expressway, Suite 1100
Richardson, Texas 75080
www.geotrace.com

CURTIS R. MAYO
GEOLOGICAL CONSULTANT

Reserve Analysis Prospect Evaluation
Expert Witness Prospect Generation

Fredericksburg, Texas 78624

Office: 830.992.2938 Cell: 830.765.0628 E-Mail: cmayo@crecsc.net

Dennis O. Moore
Formation Evaluation
Wireline Systems - Southern Area



800 N. Shoreline Blvd., Suite 700 N. Tower
Corpus Christi, Texas 78401-3771
Office: 361-883-1561
Fax: 361-883-4390
Cell: 361-816-5144
Email: dennis.moore@bakerhughes.com

www.bakerhughes.com



J. Mark Miller
President

Phone (361) 883-7700
Fax (361) 883-7701
mark@millersmithgas.com
545 N. Upper Broadway
Suite 400
Corpus Christi, Texas 78476

Wellhead Gas Marketing

Mailing Address
615 Leopard, Ste. 640
Corpus Christi, Texas 78401-0641
361.882.7888 phone
361.882.7889 fax
361.946.2581 mobile

Contact Address
1701 Southwest Parkway, Ste. 109
College Station, Texas 77840
866.946.2581 phone
866.946.2580 fax

pmueller@muclrexp.com
www.muclrexp.com



J. Paul Mueller, Jr.
President



Daniel J. Neuberger
Geologist and President

Austin Office:
712 Windsong Trail
West Lake Hills, Texas 78746

Office (361) 548-7723
Home (512) 306-1223
dan@neuoilandgas.com

Patrick Nye
President
patrick@nyexp.us

Office: (361) 452-1455
Cell: (361) 658-1089
Res: (361) 238-2146



802 N. Carancahua, Suite 1840
Frost Bank Plaza
Corpus Christi, TX 78401
www.nyexp.us



BRIAN E. O'BRIEN

Main: 713-783-4883
Fax: 713-783-3039
Res: 713-784-7911
Cell: 713-899-5164
E-mail: bobrien@saxetpetroleum.com

510 Bering Drive
Suite 600
Houston, Texas 77057

YOUR CARD COULD BE HERE!!!
\$30 FOR 10 ISSUES
AD PRICES PRO-RATED
EMAIL CHRISTIAN AT
CHRISTIAN.DOHSE@GMAIL.COM



Herradura
Petroleum, Inc.

JEFF OSBORN
Geologist

711 N. Carancahua, Ste. 1750
Corpus Christi, Texas 78475
e-mail: jeff@herradurapetroleum.com

Office: 361-884-6886
Fax: 361-884-9102
Cell: 361-537-2349

SWIFT ENERGY COMPANY



RICHARD M. PARKER P.G.
Manager / Geological Operations
TBPG License # 6056

(281) 874-2585
Mobile # 1 (713) 724-4380
Mobile # 2 (713) 206-3158
Home: (281) 412-0745

16825 NORTHCHASE DR., SUITE 400
HOUSTON, TEXAS 77060 E-mail: richard.parker@swiftenergy.com



3 Riverway, Suite 650
Houston, Texas 77056

office: 713-333-9200
cell: 832-418-3409
mprzywara@qstarllc.com

Mark S. Przywara
Vice President - Geosciences



EOG Resources, Inc.
19100 Ridgewood Pkwy
Building 2
San Antonio, TX 78259-1828
Direct: (210) 403-7852

Sara Reilly
Geologist

P. O. Box 592929
San Antonio, TX 78259-0196
Fax: (210) 403-7853
sara_reilly@eogresources.com

First Rock, Inc.

RGR Production

First Rock I, LLC

Gregg Robertson

Main Office:
600 Leopard, Suite 1800
Corpus Christi, TX 78401
361-884-0791

Field Office:
5574 FM 1344
Floresville, TX 78114
830-484-1122



Wireline Services

Weatherford International Ltd.
401 E. Sonterra Blvd., Suite 175
San Antonio, Texas 78258
USA

Sam Roach
US Gulf Coast Wireline Sales

+1.210.930.7588 Direct
+1.210.930.7610 Fax
+1.210.241.2463 Mobile

sam.roach@weatherford.com
www.weatherford.com



Douglas Sartoris
exploration geologist

DSX energy limited, LLP
One Shoreline Plaza, 800 North Shoreline Blvd.
South Tower, Suite 2570, Corpus Christi, TX 78401
bus. 361.884.1130 fax. 361.884.1171 email: dsartoris@aol.com

TOM SELMAN
selmanlog.com
tselman@selmanlog.com

Ofc. (432) 563-0084
(800) 578-1006
Cell (432) 288-2259



GEOLOGICAL CONSULTING / SURFACE LOGGING SERVICES

P.O. Box 61150 Midland, TX 79711 4833 Saratoga #624 Corpus Christi, TX 78413 P.O. Box 2993 Rock Springs, WY 82902

Crossroads Exploration

Gloria D. Sprague
Geologist

Timpson Building 189 N. First Street, Suite 111 Timpson, Texas 75975
Office: (936) 254-3600 Fax: (936) 254-3602
E-Mail: gsprague@usawide.net

THOMAS W. SWINBANK

CERTIFIED PETROLEUM GEOLOGIST
PRESIDENT

STRIKE OIL & MINERALS CORP. PHONE/FAX 512-863-7519
P.O. Box 1399 HOME 512-863-7903
GEORGETOWN, TEXAS 78627 CELL 512-876-9585

Dennis A. Taylor
Vice President of Geology
dennis@amshore.com

Off: (361) 888-4496
Fax: (361) 888-4588
Direct Line: (361) 844-6722
Cell: (972) 672-9916



AMERICAN SHORELINE, INC.

AMSHORE TEXAS WIND, LLC

802 N. Carancahua Street, Suite 1250
Corpus Christi, Texas 78401-0019
www.amshore.com

Environmental Exploration & Production

JEANIE TIMMERMANN

GEOSCIENTIST
TX LICENSE #2289

7214 Everhart #9 (361) 991-7451
Corpus Christi, TX 78413 jtimmermann74@ymail.com



Davis
Petroleum
Corp.

www.davispetroleumcorp.com

Jim Travillo
Senior Geoscientist

1330 Post Oak Boulevard
Suite 600
Houston, Texas 77056

Direct: 713.439.6773
Main: 713.626.7766
Fax: 713.626.7775
Cell: 713.823.9332

jtravillo@davcos.com



10001 Richmond Avenue
Houston, TX 77042-4299
P.O. Box 2469 (77252-2469)
Tel: 713-689-6552
Fax: 713-689-1089
Mobile: 281-615-6827
CTutt@slb.com

Chris O. Tutt
Sales Representative
NAM Sales



AUSTIN

512.457.8711
cell: 512.217.5192
fax: 512.457.8717

WILLIAM A. WALKER, JR.
Certified Petroleum Geologist
bwalker@stalkerenergy.com

HOUSTON

713.522.2733
cell: 512.217.5192
fax: 713.522.2879

1717 WEST 6th STREET, STE. 230 • AUSTIN, TX 78703
2001 KIRBY DR., STE. 950 • HOUSTON, TX 77019

SEBASTIAN P. WIEDMANN

GEOSCIENTIST

WILSON PLAZA WEST
606 N. CARANCAHUA, SUITE 500
CORPUS CHRISTI, TEXAS 78401

OFFICE (361) 884-4084
FAX (361) 882-7816
MOBILE (361) 946-4430

swiedmann@braytonc.com

JOHN C WORLEY-GEOLOGIST

Summer/Fall-
Bozeman, MT 59718
Winter/Spring-120 Sugar Cr
Rockport, TX 78382
406-388-0561 or 361-790-7900



10001 Richmond Avenue
Houston, Texas 77042-4299
P.O. Box 2469 (77252-2469)
Tel: 713-689-2757
Fax: 713-689-1089
Mobile: 281-658-5263
CYanez@slb.com

Charles Yanez
Manager
Shared Value Optimization



Amir Zaman

Vice President, Business Development

Ph: 713.278.0400
Cell: 832.576.1368
azaman@crescentgeo.com

2500 Wilcrest Drive, Suite 202
Houston, Texas 77042
www.crescentgeo.com

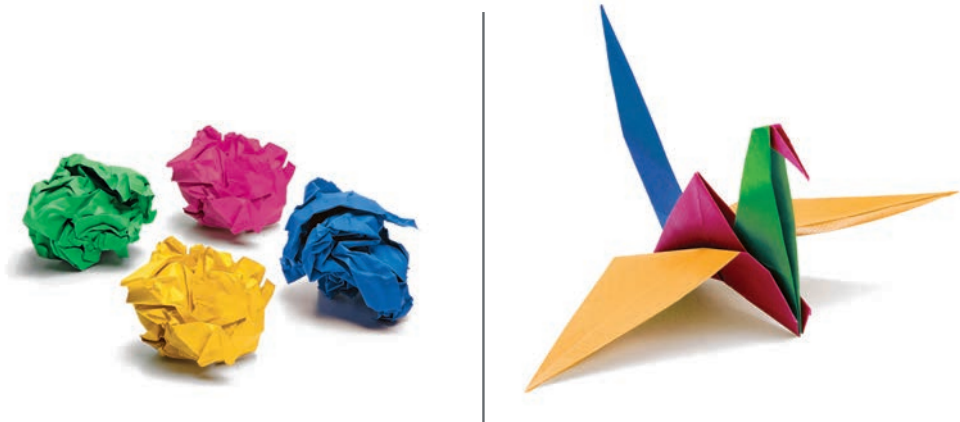


Nicola Coronis
Account Manager

431 Mason Park, Suite B
Katy, Texas 77450

Seismic Attribute Services Direct: 713-972-6209
Fax: 281-395-6999
www.resolvevegeo.com E-mail: ncoronis@resolvevegeo.com

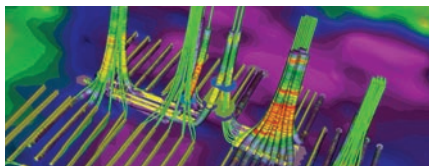
YOUR CARD COULD BE HERE!!!
\$30 FOR 10 ISSUES
AD PRICES PRO-RATED
EMAIL CHRISTIAN AT
CHRISTIAN.DOHSE@GMAIL.COM



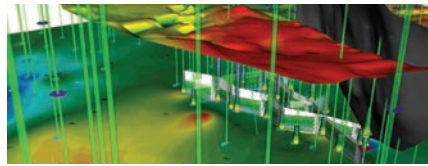
Build reservoir analyses. Watch your potential soar.

IHS PETRA® provides a unique solution to integration, analysis and manipulation of geological, geophysical, petrophysical and engineering information. With easy data loading and a powerful and flexible database, you can both effectively manage projects and quickly visualize results using interactive mapping, cross sections, log plots, cross plots and more—all within a single system. Superior technical support and proven integration of customer enhancements make PETRA the highest-ranked¹ geological interpretation tool in the E&P industry for both reliability and accuracy and ease of use. **Energy information, refined.**

¹Welling & Company Geological & Geophysical Software Study, 2009



Directional Well Module



3D Visualization Module

ihs.com/petra-ccgs-1



The Source
for Critical Information and Insight

©2010 IHS Inc. All rights reserved.