

BULLETIN

**Corpus Christi
Geological Society**



and

**Coastal Bend
Geophysical Society**



**September
2014
ISSN 0739 5620**

American Shoreline, Inc.



Specializing in
Oil & Gas Exploration
& Wind Energy

Compliments of

Paul Strunk, President

Jena Nelson, VP Finance & Administration

Dennis Taylor, VP Geology

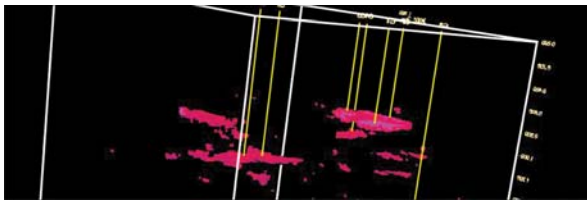
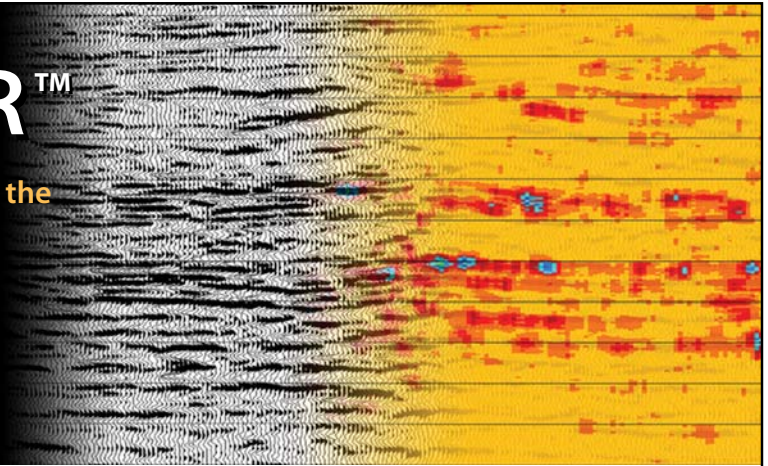
802 N. Carancahua
Frost Bank Plaza, Suite 1250
Corpus Christi, Texas 78401
(361) 888-4496

www.amshore.com

DRILL SMARTER™

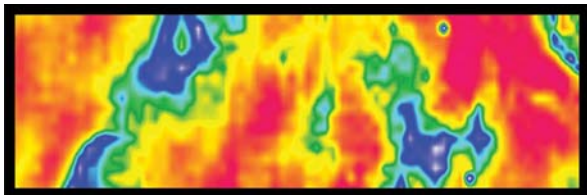
Proprietary Post-Stack Technologies to Aid in the Analysis of Seismic Data and Identification of Direct Hydrocarbon Indicators

Reduce risk • Increase exploration success
Stay ahead of the competition • Improve your ROI



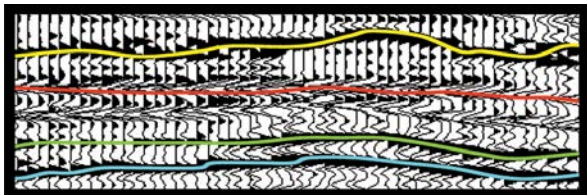
EnergyAbsorptionSM

Measures high frequency absorption indicating the location of increased porosity and potential gas accumulations



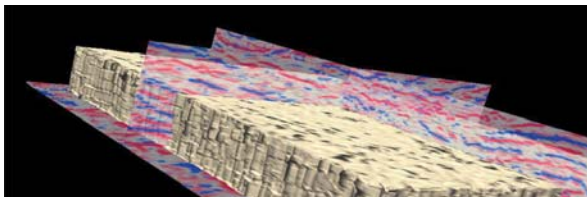
SpecViewSM

Spectral Decomposition identifying hidden stratigraphic information and subtle anomalies within a specific horizon



HiResSM

Recovers detail lost in the standard seismic response



SemCubeSM

Measures a semblance response indicating faulting, fracturing and other anomalous areas

SeismicVentures[®]

For more information, contact Sara Davis at s_davis@seismicventures.com or (281) 240-1234 x206

Seismic Ventures, Inc. • 12603 Southwest Freeway, Suite 600 • Stafford, Texas 77477
t: 281-240-1234 • f: 281-240-4997 • www.seismicventures.com



CORPUS CHRISTI GEOLOGICAL SOCIETY

P.O. BOX 1068 * C.C. TX. 78403

2014-2015

www.ccgeo.org

OFFICERS

President	Leighton Devine	361-510-8872	ldevine@suemaur.com
President Elect			
Vice President	Randy Bissell	361-885-0113	randyb@headington.com
Secretary	Allison Corcoran	361-882-8400	allison@aaoperating.com
Treasurer	Zachary Corcoran	361-658-5850	zcorcoran1982@gmail.com
Past President	Bob Critchlow	361-882-3046	bcritchlow@virtexoperating.com
Councilor I	Rick Paige	361-884-8824	rickp@suemaur.com
Councilor II	Mike Lucente	361-883-0923	mikel@impexploration.com

AAPG DELEGATES

2006-14	Dennis Moore	361-886-5144	dennis.moore@bakerhughes.com
---------	--------------	--------------	--

EDITORS

Bulletin Editor	Marian Wiedmann	361-855-2542	wiedgulf@aol.com
Bulletin Tech. Editor	Susan Stone	361-739-4759	stonesciences@yahoo.com
Web Master	Chris Davis	361-537-1508	cdavis@spurfire.com

GEOLOGICAL SOCIETY COMMITTEES & CHAIRPERSONS

Advertising	Sara Miller	361-887-2691	sara_miller@eogresources.com
Business Cards	Christian Dohse	361-877-3431	christian.dohse@gmail.com
Arrangements	Allison Corcoran	361-888-8288	allison@aaoperating.com
Bloodmobile	Mike Lucente	361-883-0923	mikel@impexploration.com
Earth Day	Alan Costello	361-888-4792	acostello@royalcctx.com
Continuing Ed.	Stephen Thomas	361-888-8880	stthomas@virtexoperating.com
Education & Scholarship	Dawn Bissell	361-960-2151	bissells@swbell.net
Fishing Tournament	Leighton Devine	361-882-8400	ldevine@suemaur.com
History	Ray Govett	361-855-0134	ray30@hotmail.com
Membership	Dorothy Jordan	361-885-0110	dorothyj@headington.com

Type Logs	Randy Bissell	361-885-0113	randyb@headington.com
University	Frank Cornish	361-883-0923	frank.cornish@gmail.com
Liaison	Zach Corcoran	361-902-2857	zcorcoran1982@gmail.com



COASTAL BEND GEOPHYSICAL SOCIETY
P.O. BOX 2741 * C.C. TX. 78403
2014-2015

OFFICERS

President	Lonnie Blake	361-883-2831	lonnie_blake@eogresources.com
Vice President	Bob Witherspoon	361-884-8824	bobw@suemaur.com
Secretary/ Treasurer	Matt Hammer	361-888-4792	mhammer@royalcctx.com

COMMITTEES AND CHAIRPERSONS

Membership	Dorothy Jordan	361-885-0110	dorothyj@headington.com
	Randy Bissell	361-885-0113	randyb@headington.com
Golf Chairman	Fermin Munoz	361 960-1126	fmunoz04@hotmail.com
Scholarship/ Chairman	Ed Egger	361-947-8400	edegger69@gmail.com
Education	Vicki Marlett	214-557-0815	vmarlett@geotrace.com

**Visit the geological
Web site at
www.ccgeo.org**

SPONSORS

WELLSITE GEOSCIENCE SERVICES



When time is money, Wellsite Geoscience is money well spent.

Whether you're exploring a basin, producing a well or completing a shale play, time is money. That's why Weatherford Laboratories brings a suite of formation evaluation technologies right to the wellsite. Utilizing mud gas and cuttings, these technologies provide detailed data on gas composition, organic richness, mineralogy and chemostratigraphy in near real time. As a result, operators now have an invaluable tool to assist with sweet spot identification, wellbore positioning, completion design and hydraulic fracturing. We call it Science At the Wellsite. You'll call it money well spent.

SCIENCE AT THE WELLSITE™
www.weatherfordlabs.com

Formation Evaluation | Well Construction | Completion | Production
©2011 Weatherford. All rights reserved.



Victor P. Smith
Oil Company, L.L.C.



Jackson, Mississippi

**Interested in Ideas and Prospects in Texas
Will Lease and Operate
Confidentiality Maintained**

Jeanne S. F. Phelps
281/398-5208 jspfhelps@yahoo.com
SIPES # 2509

CHARGER EXPLORATION

Michael L. Jones
President/Geologist

**Onshore Gulf Coast Prospect Generation and Consulting
Texas – Louisiana – Mississippi**

1001 McKinney Street, Suite 801, Houston, Texas 77002
Office: 713.654.0080 Mobile: 713.398.3091
Email: mjones@chargerexploration.com
www.chargerexploration.com

TABLE OF CONTENTS

Officers, Committees, and Chairpersons, CCGS, CBGS.....	2 & 3
Blood Drive.....	5
Calendar of Meetings and Events.....	6 & 7
CCGS President's Letter.....	9
Annual Kickoff Bar-B-Q.....	10
CBGS President's Letter.....	11
Membership Renewal.....	13
Ideas? Presentations? References? Volunteers?.....	15
GCAGS 2014 64th Annual Convention.....	17
Seismic Workshop (Geotrace).....	19
CBGS Golf Tournament.....	20 & 21
CCGS Scholarship Guidelines and Application.....	24 & 25
Scholarship Committee News.....	26
Blood Drive.....	28
Geologic Presentations.....	30,31&32
Geo Link Post.....	34
Type Logs of South Texas Fields.....	35
Order OIL MEN DVD.....	36
Wooden Rigs Iron Men.....	37
Professional Directory.....	38

CCGS/CBGS JOINT MEETING SCHEDULE 2014-2015

September 2014							October 2014							November 2014						
S	M	T	W	Th	F	S	S	M	T	W	Th	F	S	S	M	T	W	Th	F	S
	1	2	3	4	5	6				1	2	3	4							1
7	8	9	<u>10</u>	11	12	13	5	6	7	8	9	10	11	2	3	4	5	6	7	8
14	15	16	17	18	19	20	12	13	14	<u>15</u>	16	17	18	9	10	11	12	13	14	15
21	22	23	24	25	26	27	19	20	21	22	23	24	25	16	17	18	<u>19</u>	20	21	22
28	29	30					26	27	28	29	30	31		23	24	25	26	27	28	29
														30						

Sept. 10, 2014
 5:30p.m.—8:30p.m.
 Kickoff BBQ
 Howard’s BBQ & Catering
 1002 Antelope Street

Oct. 15—11:30a.m.—1:00p.m.
 Speaker: Ken Williams—
 Halliburton.
 “Barostratigraphy”

Nov. 19—11:30a.m.—1:00p.m.
 Speaker: Tony Hauglum--Rivera
 Exploration. “Eagleford Update”

December 2014							January 2015							February 2015						
S	M	T	W	Th	F	S	S	M	T	W	Th	F	S	S	M	T	W	Th	F	S
	1	2	3	4	5	6					1	2	3	1	2	3	4	5	6	7
7	8	9	<u>10</u>	11	12	13	4	5	6	7	8	9	10	8	9	10	11	12	13	14
14	15	16	17	18	19	20	11	12	13	14	15	16	17	15	16	17	<u>18</u>	19	20	21
21	22	23	24	25	26	27	18	19	20	<u>21</u>	22	23	24	22	23	24	25	26	27	28
28	29	30	31				25	26	27	28	29	30	31							

Dec. 10—11:30a.m.--1:00p.m.
 Speaker: Woodson Godfrey—
 PaleoSource. “Distinguishing a
 Resource Play

Feb. 18—11:30a.m.—1:00p.m.
 Speaker: Collegiate Month.
 “Presentation by TAMUCC,
 TAMUK and DelMar”

CCGS/CBGS JOINT MEETING SCHEDULE 2014-2015

March 2015							April 2015							May 2015						
S	M	T	W	Th	F	S	S	M	T	W	Th	F	S	S	M	T	W	Th	F	S
1	2	3	4	5	6	7				1	2	3	4						1	2
8	9	10	11	12	13	14	5	6	7	8	9	10	11	3	4	5	6	7	8	9
15	16	17	18	19	20	21	12	13	14	15	16	17	18	10	11	12	13	14	15	16
22	23	24	25	26	27	28	19	20	21	22	23	24	25	17	18	19	20	21	22	23
29	30	31					26	27	28	29	30			24	25	26	27	28	29	30
														31						

Special Guest Lecturer to be
Announced.

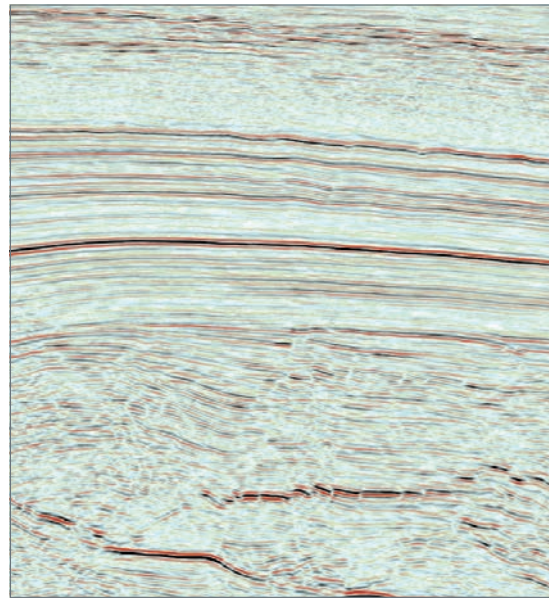
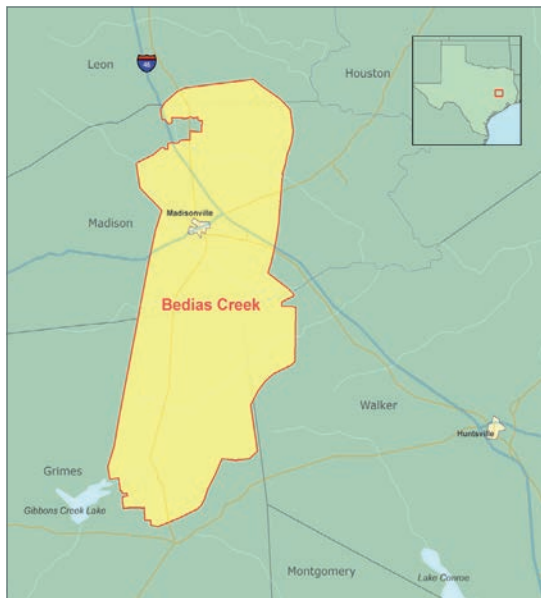
Calendar of Meetings and Events Calendar of Area Monthly Meetings

- Corpus Christi Geological/Geophysical Society.....Third Wed.—11:30a.m.
- SIPES Corpus Christi Luncheons..... Last Tuesday—11:30a.m.
- South Texas Geological Society Luncheons..... Second Wed—noon San Antonio
- San Antonio Geophysical Society Meetings..... Fourth Tuesday
- Austin Geological Society..... First Monday
- Austin Chapter of SIPES.....First Thursday
- Houston Geological Society Luncheons..... Last Wednesday
- Central Texas Section of Society of Mining, Metallurgy & Exp..... 2nd Tues every other month
In San Antonio



Bedias Creek 3D

Madison, Grimes, Walker,
and Leon Counties, Texas



- 323 mi² of high-quality, high-fold data (110-fold) acquired using cableless **UNITE** crews and a dynamite source
- State-of-the-art processing, including 5D Interpolation and Orthorhombic Pre-Stack Time Migration
- Data now available

For more detailed information contact us:

Scott Tinley +1 832 351 8544 scott.tinley@cgg.com
Cheryl Oxsheer +1 832 351 8463 cheryl.oxsheer@cgg.com

cgg.com/multi-client





CCGS PRESIDENT'S LETTER

Welcome to the 2014-2015 Corpus Christi Geological Society's New Year. It is truly an honor to be serving as President. It seems just a short while ago, I was passing out resumes at a monthly luncheon looking for my first job in the "real world". The society has been a blessing to me, and was truly instrumental in getting my career started. Therefore, I have always tried to stay involved and active. Thank you to everyone who has been part of my journey. A special thanks to Bob Critchlow for his great contributions as last years' president. I have a great line-up of board members and committee chair persons, and I am looking forward to working with you all.

The CCGS Annual Kickoff BBQ will be held September 10, 2014 from 5:30 to 8:30 pm. WE HAVE A NEW VENUE. This years' event will be held at HOWARD'S BBQ located downtown on 1002 Antelope St. Please come out and celebrate the beginning of a new society year. I encourage our student members to show up and be involved. This venue and social meeting style provides a great opportunity for you to meet professionals in the business.

We just wrapped-up our 5th annual CCGS Saltwater Fishing Tournament, and we had tremendous support this year from our sponsors. We had a great turn-out. It is nice to hear all of the positive feedback from our participants, and we are always open to any suggestions that would help us grow our tournament. We are currently closing out the books, and it looks like we raised over \$7,000.00 for the second year in a row. I plan on donating a majority of this money to the CCGS Scholarship Trust Fund. I'm sure the Scholarship Committee will continue to find deserving students and the next generation of young geologists.



I am looking forward to the year ahead. Our society is fiscally very healthy, and we have a unique opportunity to impact our communities and surrounding areas currently experiencing a boom in both economic strength and job growth. We have many community outreach programs, and I would like to encourage all of you to get involved. These are exciting times. Our History Committee has a new documentary in the works, we have some great new ideas and speakers lined up for our monthly meetings, multiple new professional continuing education opportunities, and we plan on hosting some fun after-hour events throughout the year. Also, the GCAGS Annual Convention will be held in Corpus Christi in the fall of 2016. Please volunteer. The CCGS is *your* society.

Leighton Devine—CCGS President



The Corpus Christi Geological Society
and
The Coastal Bend Geophysical Society



Invite you to join them for the 2014

Annual Kickoff Bar-B-Q

Wednesday, September 10, 2014

5:30 to 8:30 p.m.

at

Howard's BBQ & Catering

1002 Antelope Street

\$25 per person

Texas Home-Style Bar-B-Q Buffet

Complimentary Refreshments Courtesy of



Kindly RSVP by Monday, September 8, 2014

Allison Corcoran

Allison@aaoperating.com



CBGS PRESIDENT'S LETTER

Welcome back from summer. You need to put some dates on your calendar.

October 10th –CBGS Golf Tournament—Northshore Country Club. Flyer with details in the bulletin. Contact Fermin Munoz to play or sponsor. Scholarship applicants being reviewed.

October 22nd – CBGS Geophysical Workshop – Attributes of Attributes by Fred Hilterman. Free to CBGS members and students. Flyer with details in the bulletin. Contact Vicki Marlett for information.

Speakers are getting worked out, and it is looking like a good year. If you now of a good talk you would like to see, let Randy Bissell or I know especially if it is interpretation related. If you plan on going to GCAGS, SEG or AAPG let us know what good talks you heard.

Parting thought: “A good vacation is over when you begin to yearn for your work.”—
Morris Fishbein

Lonnie Blake—CBGS President

Seismic Crews - US Onshore	Current Month	Last Month	Difference	(Per SEG/Seismic Crew Reports Survey)
+	Onshore/Offshore	Onshore/Offshore		
	48/13	47/22	+10	
	Current Month	Last Month	Last Year - Monthly	(Per Texas RRC, last reported)
Texas Production	MMBO/BCF	MMBO/BCF	MMBO/BCF	
Oil	66.2	66.7	63	
Gas	617	624	701	
	Current Month	Yr to date - 2014	Yr to date - 2013	
Texas Drilling Permits	2,185	11,880	11,578	
Oil wells	639	3,424	3,705	
Gas wells	94	642	711	
Oil and Gas wells	1,345	7,302	6,720	
Other	22	98	93	
Total Completions	2,099	15,828	12,740	
Oil Completions	1,739	13,672	9,626	
Gas Completions	316	1,633	2,707	
New Field Discoveries	4	22	26	
Other	44	523	407	

SPONSORS

That old gas kick could be your next discovery!

Characterization of Unconventional Reservoirs

Traditional methods of core analysis cannot yield acceptable results when applied to unconventional reservoirs such as gas shales, tight gas sands, coals and thin bed formations.

Production controls on these reservoirs are not limited to hydrocarbons in place, permeability and porosity. Pay identification requires an understanding of complex lithologies and exotic mineralogies.

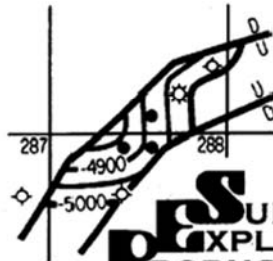
Only Core Lab offers the comprehensive range of unique technologies required to optimize your unconventional reservoirs.

Geological Petrophysical Geomechanical Geochemical



To learn more about our unique unconventional reservoir evaluation services contact Core Lab. (713) 328-2121 or (361) 289-5457 psinfo@corelab.com

© 2005 Core Laboratories. All rights reserved.



PSUEMAUR
EXPLORATION &
PRODUCTION, LLC

1000 Frost Bank Plaza
802 North Carancahua Street
Corpus Christi, TX 78470-0400
Phone: (361) 884-8824
Fax: (361) 884-9623

*Exploring Texas
since 1968*

RENEW...RENEW...RENEW...RENEW...RENEW...RENEW...RENEW...RENEW

Please RENEW for the 2014-15 Membership Period using those handy forms we mailed in August.

Everyone should have received their 2014-2015 Membership Renewal forms in the US Mail.

- **PRINTED BULLETINS** are available to any member for \$10/year. We must have a valid mailing address. Please confirm your mailing address on the renewal form.
- **Emails!** Please legibly re-write your preferred email address at the bottom of the form. We are striving to maintain **100%** of the Society reachable by email. Your email is vital if you've chosen not to receive the printed Bulletin.
- Please **return the form promptly**...yes, before (or at) the Kickoff party. Return of your form is *vital* to keeping our records in order, that's why we enclose a return envelope.
- **IMPORTANT:** Even if you plan to pay at the Kickoff, please bring your renewal form and payment in the envelope! Honorary and student members, please return your forms, too! Students need to update emails, employment, and contact info.
- **Pictures.** We're continuing to add pictures to our database, still not quite enough to justify a new photo directory. Send us a photo (email it to dorothyj@headington.com) – if we get enough pictures this renewal period, we'll plan on a photo directory in June.

We mailed **500 renewals** this year and it is very expensive for our Societies. Some Gulf Coast societies have abandoned mailings completely. Each year, we dig back a few years to catch those who may have simply forgotten to renew. Again, your prompt return of your renewal form is *your* part of this process. Please make this effort worthwhile for our Society.

RENEW...RENEW...RENEW...RENEW...RENEW...RENEW...RENEW...RENEW

For new members, active or student. Email **randyb@headington.com** to get a membership form. Just print it, fill it out and send it along with your check (no fee for students) to: CCGS Membership, 500 North Shoreline Blvd., Ste. 902N, Corpus Christi, Texas 78401-0343.

Contact Randy Bissell at **randyb@headington.com** or **(361) 885-0110** with any questions. Thanks for your quick response – earlier makes it much easier! And remember:

RENEW...RENEW...RENEW...RENEW...RENEW...RENEW...RENEW...RENEW

SPONSORS

Headington Oil Company LLC



Operating with excellence in South Texas since 1990.

902 North Tower – Bank of America Building – Corpus Christi, Texas
(361) 885-0110



Nueces Energy, Inc.

P.O. Box 252
Corpus Christi, Texas 78403
Office: (361) 884-0435
Fax: (361)-654-1436
www.nuecesland.com

Nueces Energy, Inc. is a complete land services company in the business of providing professional landmen and project management to various energy related jobs primarily in the oil and gas industry.

With over 30 years of industry experience, we specialize in determining surface and subsurface ownership and negotiating and acquiring contracts, rights of way agreements, and easements to provide our clients with the legal right to explore and develop oil and gas resources. We provide a full service land company capable of managing any project no matter how large or small.



THUNDER EXPLORATION, INC.

Celebrating 30+ years of prospect generation and exploration in the following South Texas plays and trends.

Frio	San Miguel	Edwards
Jackson	Austin Chalk	Pearsall
Yegua	Eagle Ford	Sligo
Wilcox	Buda	Cotton Valley
Olmos	Georgetown	Smackover

Thunder is currently seeking non-operated working interest participation in projects and prospects.

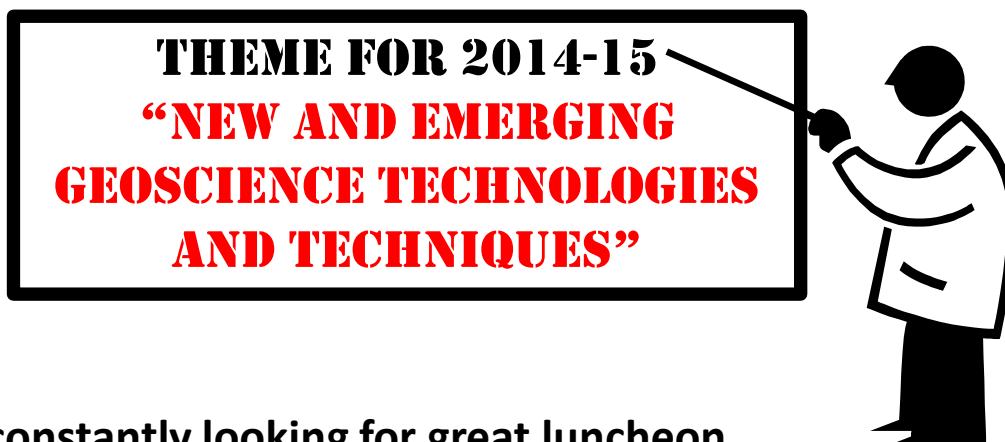
Contact **Walter S. Light Jr.**
President/Geologist

713.823.8288
EMAIL: wthunderx@aol.com



TALKS TALKS TALKS **TALKS!!!**

We want your presentations!



We are constantly looking for great luncheon presentations for our monthly events.

Some of the best talks are those from our membership – individuals and companies with fresh ideas and emerging technologies or new discoveries to showcase.

Or...Is there a presentation you've heard at SEG, SPE, AAPG, GCAGS, HGS, SIPES, TAMUCC, TAMUK, Del Mar or another forum? Please let us know. We may like it, too.

Ideas? Presentations? References? To Volunteer?

Please Contact: Randy Bissell, CCGS VP 2014-2015
randyb@headington.com or (361) 816-4920 or (361) 885-0113

sponsors



Winn Exploration Co., Inc.

Actively Seeking High Quality
Drilling Prospects

Contacts:

Mike Layman (Geophysicist)	361-844-6922
Tom Winn (Geologist)	361-844-6992
Southern Winn (Geologist)	361-844-6998

800 North Shoreline Blvd.
19th Floor, North Tower
Corpus Christi, Texas 78401

Office: 361-844-6900 Fax: 361-844-6901

WEL-LAB

HYDROCARBON LOGGING SERVICE



Operating in South Texas and Gulf Coast since 1961

Contact: Mike Bullard

P.O. Box 1011

Kingsville, Texas 78364

361-221-9717

Email: md_bullard@sbcglobal.net

A Great Place For Business

In the heart of the Business District
Broadway at Leopard

- Onsite Management
- Conference Room
- Deli & Vending Room
- Security Card Access
- High Speed Elevators
- View of Corpus Christi Bay

COMMITTED TO EXCELLENCE
Yesterday • Today • Tomorrow

The
600
BUILDING

Contact
Ellen Blasingame
698-6000

ecblasingame@netscape.net



Gulf Coast Association of Geological Societies
and Gulf Coast Section of SEPM

64th Annual Convention

October 5–7, 2014—Lafayette, Louisiana

ANNOUNCEMENT



www.gcags2014.com

Hosted by the Lafayette Geological Society

SPONSORS

KNOWLEDGE REVEALED

PURPOSE DRIVEN

- Unrivaled land seismic acquisition capabilities
- Specific solutions for all terrains and environments (land, shallow water/transition zone and OBC)
- Purpose driven crews with proven experience around the world
- Processing and Interpretation services revealing the project knowledge you need
- Full azimuth 3D and 3C coverage in unconventional resource plays
- Multi-Client opportunities in North America, Latin America and Australasia
- Proven experience in:
 - Azimuthal anisotropy resolution and fracture identification
 - Multicomponent processing
 - AVO processing and inversion



INNOVATIVE
GEOPHYSICAL
SOLUTIONS



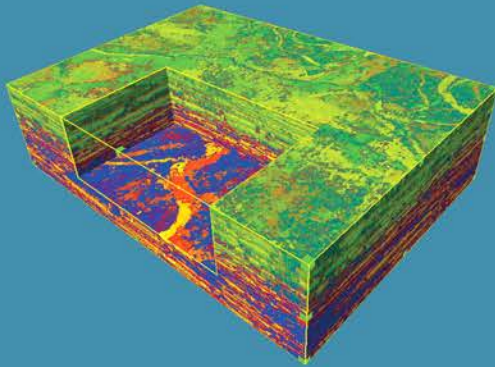
geokinetics.com



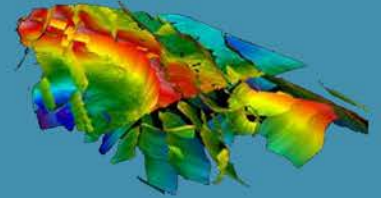
THE ATTRIBUTES OF ATTRIBUTES

-Seismic Workshop-

When: Wednesday, October 22nd, 8:30am-12:30pm
Registration begins at 8:00am



Where: EOG Resources
539 N Carancahua St., Suite 900
Corpus Christi, Texas, 78401



Speaker: Fred Hilterman

To register call or email Vicki Marlett:
972-690-1122 ext.132
vmarlett@geotrace.com

Continental Breakfast Sponsored by GeoTrace/Vicki Marlett



Geotrace®

Hello All!

We are less than 2 months from our society's annual golf tournament. This year it will be held at NorthShore Country Club in Portland on Friday October 10th. The format will be a 4-Player Scramble and will begin with a Shotgun Start at 1 p.m. This golf tournament is one of the society's oldest traditions, and the proceeds go directly to the scholarship fund. So dust off those sticks, get a team together and come on out and have some fun. Please consider sponsoring a hole, a beverage cart, closest to the pin, longest drive, door prize fund or just donate towards the tournament; everything is appreciated. This is also an excellent opportunity to advertise your business if you have printed (or non-printed) materials (tees, koozies, pens, golf balls, etc.) to hand out on the day of the tournament.

I apologize for the short fuse on this; your early response will be greatly appreciated. Thank you for your support.

Best Regards
Fermin Munoz
CBGS-Golf Chair



CBGS GOLF TOURNAMENT

Coastal Bend Geophysical Society
NorthShore Country Club
October 10, 2014
1:00 p.m. Shotgun Tee Time
Four-Man Scramble
100 Player Limit * Sign up Early



Name _____

Email _____

Company Name _____

Address _____

City, State, Zip _____

Phone _____

_____ Yes, Please Place on a Team

_____ I want to be on a Team with: (list below)

Player 2: _____

Player 3: _____

Player 4: _____

_____ \$100 per Golfer

_____ \$400 per Team (4 players)

_____ Sponsorship Total

_____ **TOTAL AMOUNT DUE**

PAYMENT INFORMATION

_____ Check Enclosed

Make Checks payable to:

Coastal Bend Geophysical Society

c/o Fermin Munoz

619 E. Broadway

Portland, TX 78374

361-960-1126

FMunoz04@hotmail.com

Sponsorships

#___ Golf Beverage Cart \$700 ea. _____

#___ Golf Holes (18) \$200 ea. _____

#___ Longest Drive
(2) \$100 ea. _____

___ Closest to the Pin
(2) \$100 ea. _____

Door Prize Sponsor _____

Total Sponsorship \$ _____

NorthShore Country Club

801 E. Broadway St.

Portland, TX 78374

Entry Fee Includes:

- Green Fees
- Range Balls
- Carts
- Beverages on the Golf Course
- Door Prizes
- Dinner Buffet

SPONSORS



WORLDWIDE LAND ACQUISITION CAPABILITIES

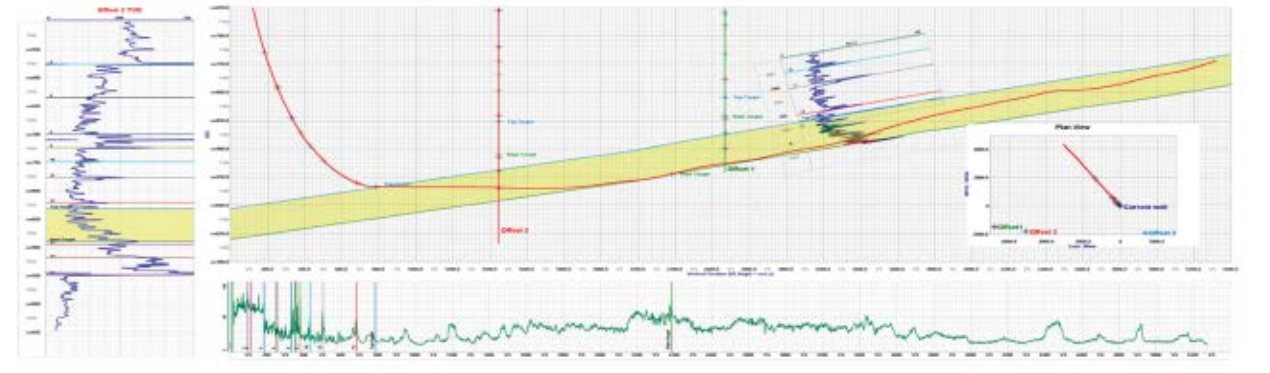
An expert provider of high-density Reservoir Grade 3D (RG3D) seismic data acquisition, Global Geophysical Services is a leader in acquisition technology. Using our AutoSeis® High Definition Recorder we are able to achieve record-setting production levels at a reduced cost.

With the largest single inventory of nodal recording stations, we can record cost-effective data sets with:

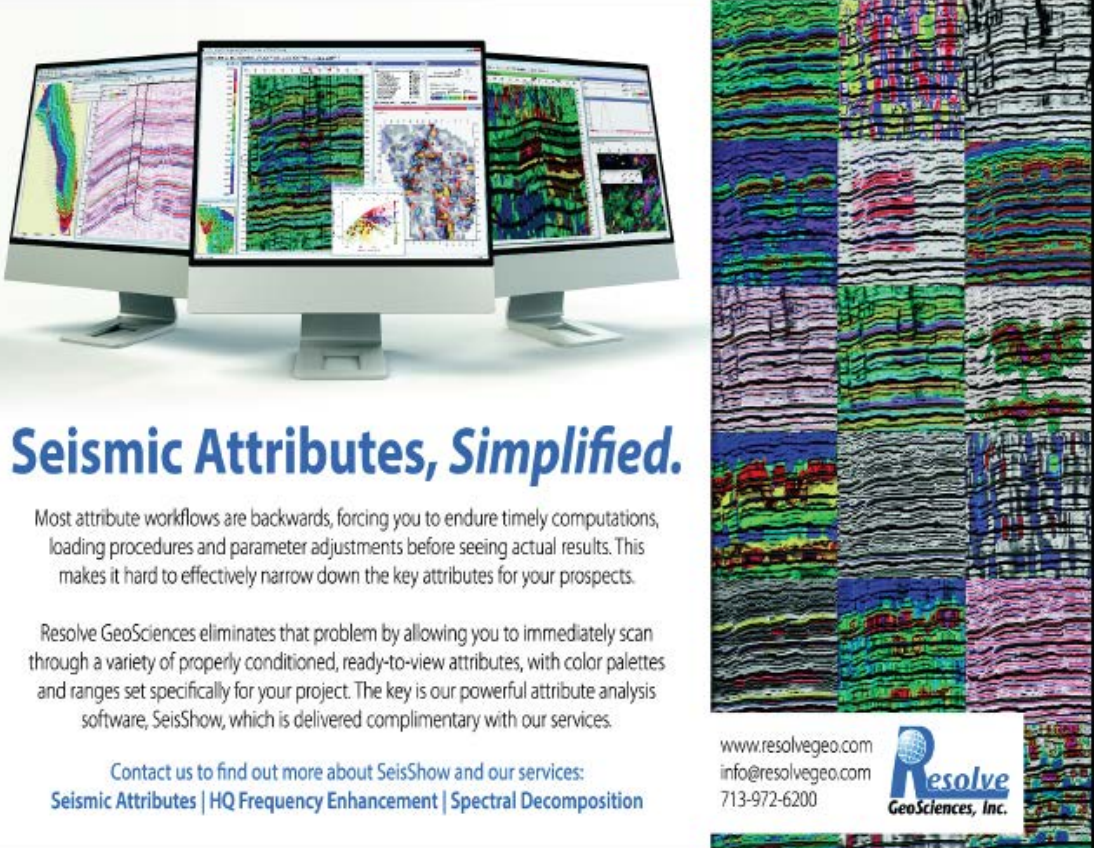
- High-Density, Long Offsets
- Rich Azimuth
- Improved Spatial Resolution
- Increased Signal-to-Noise Ratio

Global Geophysical Services, Inc.
 13927 S. Gessner Road • Missouri City, TX
 tel +1 713-972-9200

www.globalgeophysical.com

<p>www.GeoSteering.com</p> <p>281-573-0500 info@geosteering.com</p>	<p>Personnel with degrees & 20+ years of oilfield experience</p> <p>Proprietary software</p> <p>TST interpretation for GR only jobs</p> <p>Image displays / interpretation for jobs with azimuthal GR, resistivity or density</p> <p>Resistivity modelling / interpretation for jobs with LWD propagation resistivity</p> <p>Real-time (always)</p>
	

SPONSORS



Seismic Attributes, Simplified.

Most attribute workflows are backwards, forcing you to endure timely computations, loading procedures and parameter adjustments before seeing actual results. This makes it hard to effectively narrow down the key attributes for your prospects.

Resolve GeoSciences eliminates that problem by allowing you to immediately scan through a variety of properly conditioned, ready-to-view attributes, with color palettes and ranges set specifically for your project. The key is our powerful attribute analysis software, SeisShow, which is delivered complimentary with our services.

Contact us to find out more about SeisShow and our services:
Seismic Attributes | HQ Frequency Enhancement | Spectral Decomposition

www.resolvegeo.com
 info@resolvegeo.com
 713-972-6200

Resolve
 GeoSciences, Inc.


Serving Corpus Christi for over 20 years



501 S. Tanchua St.
 Corpus Christi, TX 78401

- We process 1st class mail with a direct discount to you
- No meter procedure change except for the amount you meter your envelopes

CALL 888-4332 for details - Ask for Anne



LMP PETROLEUM, INC.

EXPLORING SOUTH TEXAS

615 N. Upper Broadway
 Suite 1770
 Wells Fargo Bank Building
 Corpus Christi, Texas 78401-0773

361-883-0923
 Fax: 361-883-7102
 E-mail: geology@lmpexploration.com



Corpus Christi Geological Society Scholarship Application Guidelines Spring 2015 Semester

1. Applicant must be majoring in Earth Sciences and currently attending a college in the local area.
2. Fill out the application form clearly, completely, and sign it.
3. Short essay clearly explaining how this scholarship will assist you in achieving your geologic career goals and the reasons your application should be considered by the Committee.
4. Two (2) letters of recommendation - one must be from a geoscience faculty member or from a supervisor with whom applicant has worked with in a geoscience undertaking.
5. Applicant must provide a school transcript, please make sure it has your name on it. A web printout is acceptable.
- 6. Applications must be postmarked by: October 18, 2014**

Mail completed application to: Dawn Bissell, CCGS Scholarship Committee
Chairman, 253 Circle Drive, Corpus Christi, TX 78411

Please send an email to bissells@swbell.net once you've mailed your application.
Award notifications will be sent via email!!!

Please read requirements carefully and submit only complete applications.
Applicants who have received a CCGS scholarship in the past are eligible to apply again.

Scholarships will be awarded based on merit and need. The award amounts may vary with the minimum individual award being \$500.

Award recipients will be recognized at the monthly **luncheon November 18, 2014** and are encouraged to attend.

Board Members:

Dawn Bissell - Chairman
Brent Hopkins - Vice Chairman
Leighton Devine - CCGS President
Patrick Nye - Secretary/Treasurer

Bob Critchlow - Member
Beth Friday - Member
JR Jones - Member



Corpus Christi Geological Society
Scholarship Application Form
Spring 2015
(Must be postmarked by October 18, 2014)

Last Name: _____ First Name: _____

Mailing address: _____
(where award may be mailed if applicant is unable to attend award presentation)

City: _____ State: _____ Zip Code: _____

Active Email: _____

Award notifications will be sent via email!!! Please email bissells@swbell.net once you've submitted your application.

Daytime Phone: _____ Alternate Phone: _____

University Currently Attending: _____

Department: _____ Major: _____

Scholarship is for class level (circle one):

Freshman Sophomore Junior Senior Graduate Student

Total Hours Completed: _____ Overall GPA (Minimum 2.5): _____

Total Hours - Geology: _____ Geology GPA (Minimum 3.0) _____

Hours Planned for Scholarship Semester: _____ Geology Hours: _____

Will this scholarship be used toward field camp? Yes No

Prior recipient of CCGS Scholarship? Yes No

Applicant Signature Date

Mail application, along with essay, two letters of recommendation, and transcript to Dawn Bissell, CCGS Scholarship Committee Chairman
253 Circle Drive, Corpus Christi, TX 78411 **Must be postmarked by October 18, 2014.**
Email bissells@swbell.net once you've mailed your application. Award notifications will be made via email!!!

SCHOLARSHIP COMMITTEE NEWS

The Corpus Christi Geological Society awarded \$10,250 in scholarships to 15 local students in April 2014. Del Mar College, TAMU-CC, and TAMU-K were all represented with scholarship recipients.

Del Mar College students were: Payton Campbell, James Quisenberry, Guadalupe (Gigi) Roach,, Allyse Sanchez, and Hannah Youngblut. Hannah was our youngest (maybe ever) applicant. She attended Corpus Christi Collegiate High School and graduated in May of 2014 with an Associates in Liberal Arts from Del Mar College as well.

Texas A&M Corpus Christi Students were: Nargiz Dadashova, Robert Murphy, Ryan Reyna, Brittney Tamborello, and Ron Taylor.

Texas A&M Kingsville students were: Sara Beers, Damon Crutcher, John Dabney, Daniella Herrera, and Katelyn Wallace.

The CCGS Scholarship fund received donations from member contributions, the CCGS Fishing Tournament and the Corpus Christi Oilman's Tennis Tournament proceeds. These donations are vital to allow the committee to fund the scholarships for our deserving students. Every donation is very much appreciated.

The next awards will be given in November 2014 for the Spring 2015 semester.

Dawn S. Bissell--Scholarship Committee Chairman



DelMar College students with Bob Critchlow (CCGS Past President)



TAMUCC students with Bob Critchlow (CCGS Past President)



TAMUK students with Bob Critchlow (CCGS Past President)

SPONSORS



Since 1905

Royal Exploration Company, Inc.

Bank of America
500 N. Shoreline Blvd. Suite 807 N
Corpus Christi, Texas 78471-1008

Alan Costello - Geologist Robert Rice - Geologist
Matt Hammer - Exploration Manager

Telephone: 361-888-4792 Fax: 361-888-8190



EOG Resources Performance You Can Count On

■ The Dynamics of Performance

As EOG adds new plays to its portfolio, the company relies on the proven performance of its operations in the United States, Canada, Trinidad, the United Kingdom and China.

■ The Technology of Performance

Explorationists fuel EOG's penchant for "growth through the drillbit" by generating exciting new drilling opportunities.

■ The Consistency of Performance

EOG continues to focus on a long-term strategy that emphasizes financial returns, a strong balance sheet and organic production growth.



EOG Resources, Inc.
Corpus Christi

539 N. Carancahua, Suite 900
Corpus Christi, TX 78401

(361) 883-9231
www.eogresources.com

BLOOD DRIVE

SEPTEMBER - 2014

*Hurry, Hurry before a STORM comes....
Zoom out & give some Blood... YOU may need it!!*



THE BLOODMOBILE WILL BE AT SOME CONVENIENT
LOCATIONS – YOU CAN LOG ON TO:

www.coastalbendbloodcenter.com

When you give blood: They have us listed as C.C. Geological Society. Our number with them is 4254 & it would be helpful if you can please give them that number also.

There is a nationwide shortage of blood – and we appeal to our members to give the gift of life. Please tell the Blood Center that you are giving on behalf of the **C.C. Geological Society**. For info. their ph. no. is **855-4943**.

This message approved by Mike Lucente....

SPONSORS

SEI®

YOUR
Full Service
National
Seismic Data
Marketing Firm

Seismic Exchange, Inc.

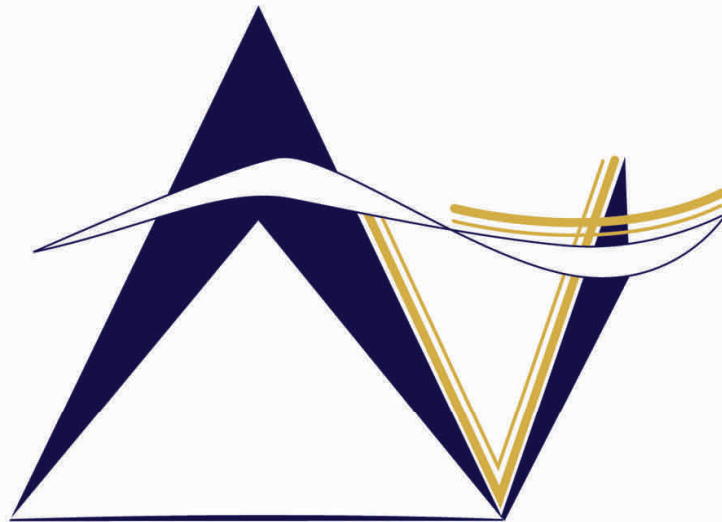
Strategic Speculative Surveys
Geophysical Data Marketing & Management

Corpus Marketing Contact:
Jeff Autrey
888-8122 (Direct to Houston)

Corpus Office
361-884-2936

CORPUS CHRISTI DALLAS DENVER HOUSTON NEW ORLEANS OKLAHOMA CITY

11050 Capital Park Dr., Houston, TX 77041 713-623-8300 FAX 832-590-5290



VirTex Operating Company, Inc.

615 North Upper Broadway, Suite 525, Corpus Christi, Texas 78477
(361) 882-3046

Geologic Presentations

There have been 17 educational and community outreach presentations to over 1,300 students so far in 2014! Below are some of the activities. Many folks were involved in more than one presentation and we appreciate all the time and effort that goes into the presentations

It is a great opportunity to be invited to these presentations and the children are always interested, excited, and engaged in Geology.

Topics covered included the *Rock Cycle* (Lisa McLaughlin), *Bring a Geologist to School* (Rett Fisher), *Science Fair Judges* (Sebastian Wiedmann, Ray Govett, David Kirk), *Science Nights* at elementary and middle schools (Alan Costello, Rett Fisher, Elia Gil, Lisa McLaughlin), *School Presentations* (Linda and Jerrold Simpson), *Summer Library Programs* (Alan Costello, Geoffrey Hopkins, Karen Linares).

A big thank you to Alan Costello for manning another successful Earth Day Bay Day table in April. He, Mike Lucente, and Sebastian Wiedmann supervised the table, but students from TAMUCC manned the wheel and made many of the presentations throughout the day.

We really appreciate the TAMUCC Students who helped with Earth Day Bay Day:

Marisa Austin
Ali Brown
Regan Elam
Miranda Fuqua
Serena Garcia
Marcie Hathaway
Ishmael Lara
Adam Morgan
Jasmine Orona
Rheba Reyna
Lauren Rodriguez
Sarah Serna
James Stanley
Garrett Thering
Lillian Vasquez

Ashley Bennett
Robbie Carte
Steven Flores
Danielle Garcia
Audrey Gonzalez
Jenna laSala
Maria Lopez
Carolina Nurz
Erica Pina
Ryan Reyna
Savannah Saenz
Sarah Sloan
Brittney Tamborello
Holly Thomas

If you are interested in being part of these presentations, contact Dawn Bissell, 361-960-2151 or bissells@swbell.net.

GEOLOGIC PRESENTATIONS



Geoffrey Hopkins, Scarlett Hopkins and Stella Hopkins give a geologic presentation for the Summer School Program at Gloria Hicks Elementary.



Dawn Bissell giving a Geologic Presentation at the Janet F. Harte Public Library.

GEOLOGIC PRESENTATIONS



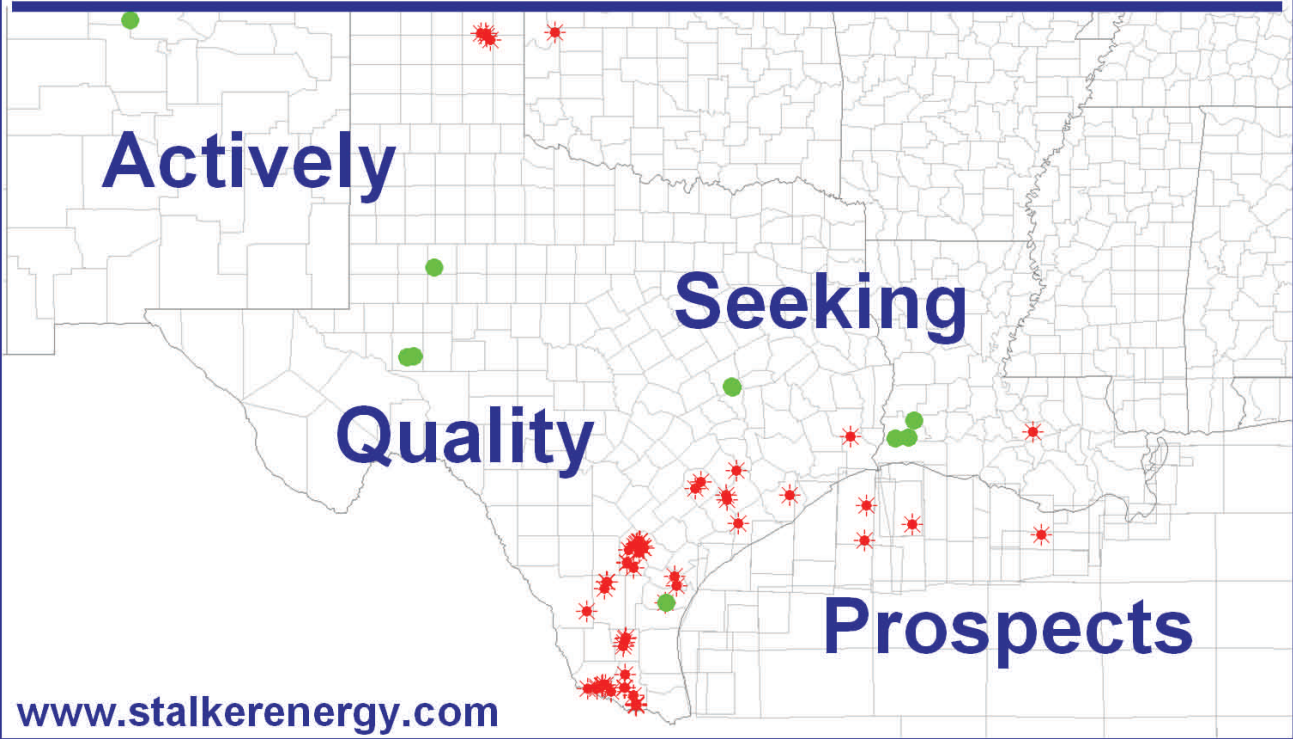
Alan Costello giving a Geologic Presentation at the Owen R. Hopkins Public Library.

SPONSORS

Austin Office:
1717 W. 6th Street, Ste 230
Austin, Texas 78703
512.457.8711
Contact: Bill Walker, Jr.
bwalker@stalkerenergy.com



Houston Office:
2001 Kirby Drive, Suite 950
Houston, Texas 77019
713.522.2733
Contact: Todd Sinex
tsinex@stalkerenergy.com



**AS GOOD AS OUR WORD
TAP INTO OUR RESERVOIR**



www.dawson3d.com
509 W Wall, Suite 800
Midland, Texas 79701
432-684-3000
800-D-DAWSON
Houston, Texas 713-917-6772
Denver, Colorado 303-723-0440
Oklahoma City, Oklahoma 405-848-7512
Michigan 248-446-9533

EXPERIENCE For over a half-century Dawson has helped its clients succeed. In both seismic acquisition and processing, we deliver high quality data that gets clear-cut results. From field equipment to software, we put the latest technologies into the hands of seasoned professionals who have geophysical knowledge specific to all major U.S. basins. Decades of acquiring data and imaging objectives to provide total subsurface picture. That's what our experience gives you.



Planning • Design • Acquisition • Processing • Results

GEO LINK POST

<http://www.lib.utexas.edu/books/landsapes/index.php> Free service. Rare, fragile, hard-to-find, public domain documents covering various topics about the landscape of Texas. Includes the Texas Geological Survey from 1887 until 1894.

USGS TAPESTRY OF TIME AND TERRAIN <http://tapestry.usgs.gov> The CCGS is donating to all of the 5th and 6th grade schools in the Coastal Bend. Check it out--it is a spectacular map. You might want to frame one for your own office. The one in my office has glass and a metal frame, and It cost \$400 and it does not look as good as the ones we are giving to the schools.

FREE TEXAS TOPOS'S <http://www.tnris.state.tx.us/digital.htm> these are TIFF files from your state government that can be downloaded and printed. You can ad them to SMT by converting them first in Globalmapper. Other digital data as well.

FREE NATIONAL TOPO'S [http://store.usgs.gov/b2c_usgs/b2c/start/\(xcm=r3standardpitrex_prd\)/do](http://store.usgs.gov/b2c_usgs/b2c/start/(xcm=r3standardpitrex_prd)/do) go to this webpage and look on the extreme right side to the box titled TOPO MAPS DOWNLOAD TOPO MAPS FREE.

<http://www.geographynetwork.com/> Go here and try their top 5 map services. My favorite is 'USGS Elevation Date.' Zoom in on your favorite places and see great shaded relief images. One of my favorites is the Great Sand Dunes National Park in south central Colorado. Nice Dunes.

<http://antwrp.gsfc.nasa.gov/apod/asropix.html> Astronomy picture of the day--awesome. I click this page everyday.

<http://www.spacimaging.com/gallery/ioweek/iow.htm> Amazing satellite images. Check out the gallery.

<http://www.ngdc.noaa.gov/seg/topo/globegal.shtml> More great maps to share with kids and students.

www.ccgeo.org Don't forget we have our own we page.

<http://terra.nasa.gov/gallery/> Great satellite images of Earth.

www.ermaper.com They have a great free downloadable viewer for TIFF and other graphic files called ER Viewer.

<http://terrasrver.com> Go here to download free aerial photo images that can be plotted under your digital land and well data. Images down to 1 meter resolution, searchable by Lat Long coordinate. Useful for resolving well location questions.

TYPE LOGS OF SOUTH TEXAS FIELDS by Corpus Christi Geological Society

NEW (2009-2010)TYPE LOGS IN RED; ***2011;**

lost now found

ARANSAS COUNTY

Aransas Pass/McCampbell Deep
Bartell Pass
Blackjack
Burgentine Lake
Copano Bay, South
Estes Cove
Fulton Beach
Goose Island
Half Moon Reef
Nine Mile Point
Rockport, West
St. Charles
Tally Island
Tract 831-G.O.M. (offshore)
Virginia

BEE COUNTY

Caesar
Mosca
Nomanna
Orangedale(2)
Ray-Wilcox
San Domingo

Tulsita Wilcox

Strauch_Wilcox

BROOKS COUNTY

Ann Mag
Boedecker
Cage Ranch
Encintas
ERF
Gyp Hill

Gyp Hill West

Loma Blanca
Mariposa
Mills Bennett
Pita
Tio Ayola
Tres Encinos

CALHOUN COUNTY

Appling
Coloma Creek, North
Heyser
Lavaca Bay
Long Mott
Magnolia Beach
Mosquito Point
Olivia
Panther Reef
Powderhorn
Seadrift, N.W.
Steamboat Pass
Webb Point
S.E. Zoller

CAMERON COUNTY

Holly Beach
Luttjes
San Martin (2)
Three Islands, East

Vista Del Mar

COLORADO COUNTY

E. Ramsey
Graceland N. Fault Bik
Graceland S. Fault Bik

DEWITT COUNTY

Anna Barre
Cook
*******Nordheim**
Smith Creek
Warmleys

Yorktown, South

DUVAL COUNTY

DCR-49
Four Seasons
Good Friday
Hagist Ranch
Herbst
Loma Novia
Petrox
Seven Sisters
Seventy Six, South
Starr Bright, West

GOLIAD COUNTY

Berclair
North Blanconia
Bombs
Boyce
Cabeza Creek, South
Goliad, West
St Armo

HIDALGO COUNTY

Alamo/Donna
Donna
Edinburg, West
Flores-Jeffress
Foy
Hidalgo

LA Blanca

McAllen& Pharr
McAllen Ranch
Mercedes
Monte Christo, North
Penitas
San Fordyce
San Carlos
San Salvador
S. Santallana
Shary
Tabasco
Weslaco, North
Weslaco, South

JACKSON COUNTY

Carancahua Creek
Francitas
Ganado & Ganado Deep
LaWard, North
Little Kentucky

Maurbro

StewartSwan Lake

Swan Lake, East

Texana, North

West Ranch

JIM HOGG COUNTY

Chaparosa
Thompsonville,N.E.

JIM WELLS COUNTY

Freebom
Hoelsher
Palito Blanco

Wade City

KARNES COUNTY

Burnell
Coy City

Person

Runge

KENEDY COUNTY

Candelaria
Julian
Julian, North

Laguna Madre

Rita

Stillman

KLEBERG COUNTY

Alazan
Alazan, North
Big Caesar
Borregos

Chevron (offshore)

Laguna Larga

Seeligson

Sprint (offshore)

LA SALLE COUNTY

*****Pearsall**

LAVACA COUNTY

Hallettsville
Hope
Southwest Speaks

Southwest Speaks Deep

LIVE OAK COUNTY

Atkinson

Braslau

Chapa

Clayton

Dunn

Harris

Houdman

Kittie West-Salt Creek

Lucille

Sierra Vista

Tom Lyne

White Creek

White Creek, East

MATAGORDA COUNTY

Collegeport

MCMULLEN COUNTY

Arnold-Weldon

Brazil

Devil's Waterhole

Hostetter

Hostetter, North

NUECES COUNTY

Agua Dulce (3)

Arnold-David

Arnold-David, North

Baldwin Deep

Calallen

Chapman Ranch

Corpus Christi, N.W.

Corpus Christi West C.C.

Encinal Channel

Flour Bluff/Flour Bluff, East

GOM St 9045(offshore)

Indian Point

Mustang Island

Mustang Island, West

Mustang Island St.

889S(offshore)

Nueces Bay/Nueces Bay

West

Perro Rojo

Pita Island

Ramada

Redfish Bay

Riverside

Riverside, South

Saxet

Shield

Stedman Island

Turkey Creek

REFUGIO COUNTY

Bonnieview/Packery Flats

Greta

La Rosa

Lake Pasture

Refugio, New

Tom O'Connor

SAN PATRICIO COUNTY

Angelita East

Commonwealth

Encino

Enos Cooper

Geronimo

Harvey

Hiberia

Hodges

Mathis, East

McC Campbell Deep/Aransas Pass

Midway

Midway, North

Odem

Plymouth

Portilla (2)

Taft

Taft, East

White Point, East

STARR COUNTY

El Tanque

Garcia

Hinde

La Reforma, S.W.

Lyda

Ricaby

Rincon

Rincon, North

Ross

San Roman

Sun

Yturria

VICTORIA COUNTY

Helen Gohike, S.W.

Keeran, North

Marcado Creek

McFaddin

Meyersville

Placedo

WEBB COUNTY

Aquilares/Glen Martin

Big Cowboy

Bruni, S.E.

Cabezon

Carr Lobo

Davis

Hirsch

Juanita

Las Tiendas

Nicholson

O'Hem

Olmitos

Tom Walsh

WHARTON COUNTY

Black Owl

WILLACY COUNTY

Chile Vieja

La Sal Vieja

Paso Real

Tenerias

Willamar

ZAPATA COUNTY

Benavides

Davis, South

Jennings/Jennings, West

Lopeno

M&F

Pok-A-Dot

ZAVALA COUNTY

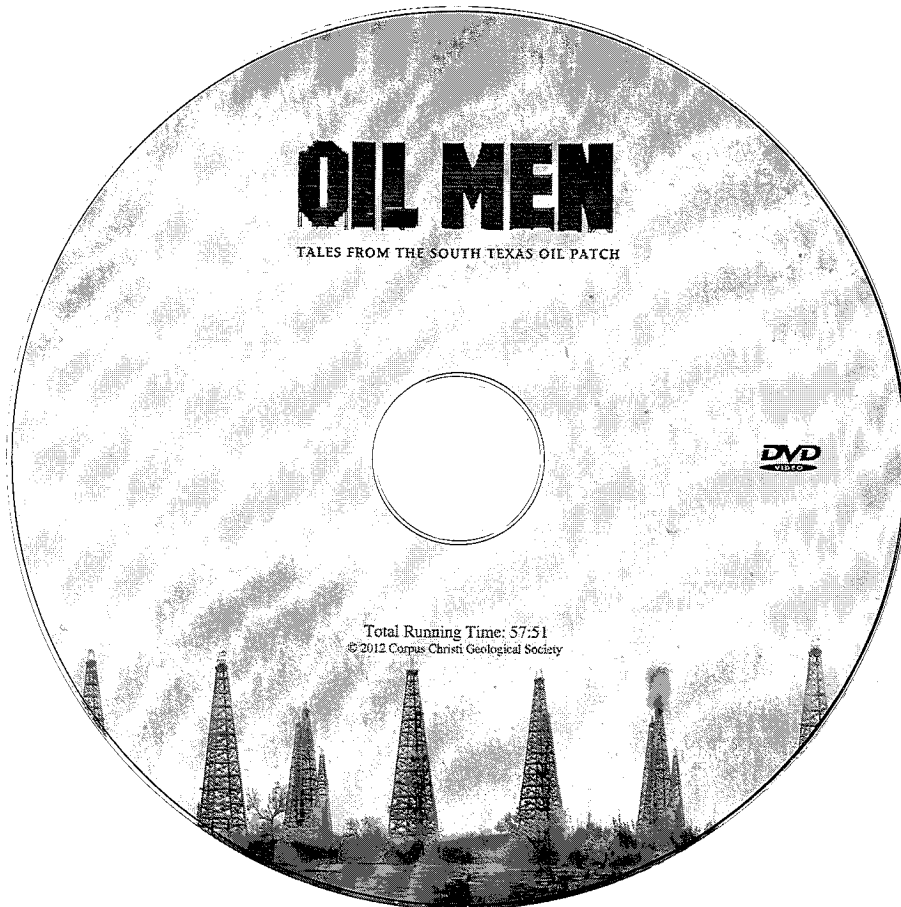
El Bano

Call Coastal Bend Geological Library, Maxine: 361-883-2736
1 log -- \$10 each, 5-10 logs \$9 each and 10 + logs \$8.00 each – plus postage

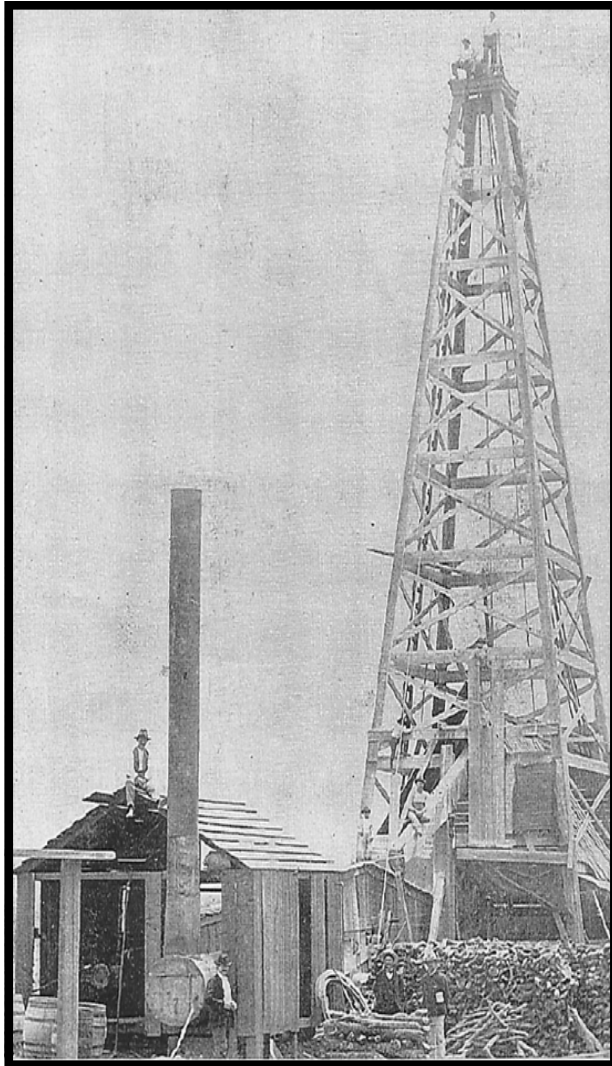
OIL MEN

TALES FROM THE SOUTH TEXAS OIL PATCH
DVD

MEMBER PRICE \$25
NONMEMBER \$30



To Order DVD
Sebastian Wiedmann
swiedmann@braytoncc.com
If mailed add \$5



Corpus Christi Geological Society
C/O Javelina Press
P. O. Box 60181
Corpus Christi, TX 78466

Order Form

Mail order form for Wooden rigs-Iron Men. The price is \$75 per copy, which includes sales tax, handling, and postage

Name _____

Address _____

City, State, Zip _____

No. of books _____ Amount enclosed _____

Send to Corpus Christi Geological Society Book Orders

P. O. Box 60181

Corpus Christi, TX. 78466 Tax exempt# if applicable _____

Wooden Rigs—Iron Men

The Story of Oil & Gas in South
Texas

By Bill & Marjorie K. Walraven

Published by the

Corpus Christi Geological Society



4201 FM 1960 West, Ste. 245
Houston, TX 77068
Office: 832-249-1000
Fax: 832-249-1007
Cell: 713-412-9133

8610 N. New Braunfels, Ste. 517
San Antonio, TX 78217
Office: 210-826-2553
Fax: 210-826-2570

520 Starr St.
Corpus Christi, TX 78401
Office: 361-888-8288
Fax: 361-888-4617
Cell: 361-816-6936

Randy Acock, P.E.
President
randy@aeaicc.com
www.aeaicc.com

david becker

David Becker
exploration
geologist

geologist

o: (361) 884-3613
f: (888) 869-2011

600 leopard st. ste 706

corpus christi. tx 78473

dkbecker1137@sbcglobal.net

Bergsma Consulting

Michael Bergsma
Geophysicist

Office: 615 Leopard, Suite 430
Corpus Christi, Texas 78476
Mailing: P.O. Box 955
Corpus Christi, Texas 78403

Cell: 361.537.6964
Home: 361.855.4515
Fax: 1.877.496.0316
e-mail: bergsmaconsulting@davlin.net



Bier Seis, Inc.
Geophysical Consulting

David Biersner, President
19446 Arrowood Place
Garden Ridge, Tx 78266
Cell: 281.744.7457
E-Mail: bierseis@yahoo.com

Field Quality Control
Program Management
Permit Management
Seismic Line Clearing
Supervision



Dawn S. Bissell
Geoscientist

Advent Geoscience Consulting, LLC

Phone: 361-960-2151
Fax: 961-854-2604
Email: bissells@swbell.net

253 Circle Drive
Corpus Christi, TX 78411
Home: 361-854-2635

MUD LOGGING SERVICE



Since 1961

MIKE BULLARD

(361) 221-9717 Office
(361) 522-1245 Cell
E-Mail md_bullard@sbcglobal.net

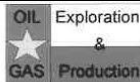
(361) 211-9715 Fax
P.O. Box 1011
Kingsville, Tx 78363

HYDROCARBON OPERATING, INC
HYDROCARBON HORIZONS, INC.
600 Leopard St., Suite 1724
Corpus Christi, Texas 78473

Brian S. Calhoun

Office 361-887-6655 Fax 361-887-6341
Cell 361-877-7557
Email: BCalhoun_HOI@sbcglobal.net

TEXAS LONE STAR
PETROLEUM CORPORATION

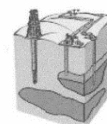


JEFF COBBS

President - Geologist

615 Leopard St., Suite 336 Office(361) 883-2911
Corpus Christi, Texas 78401-0610 Fax (361) 883-2151
jc@tlspc.com Cell (361) 960-0530

Jim Collins
Geoscientist



361.537.4034
jim@gulfcoastgas.com



SV Energy Company, LLC
Conventional Thinking. Unconventional Results.

Frank G. Cornish
Consulting Geologist
615 N. Upper Broadway, Suite 1770
Corpus Christi, TX 78401
frank.cornish@gmail.com

361-883-0923 (o)
1-800-510-5810 (f)
361-563-9184 (m)

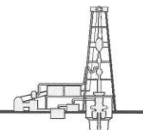


Croft Exploration

Wayne S. Croft
Geologist
SIPES #2318

5021 Graford Place • Corpus Christi, Texas 78413
(361) 991-7450 Fax (361) 991-5790

TOM DAVIDSON
GEOLOGIST



28550 IH-10 WEST SUITE #4
BOERNE, TEXAS 78006

BUS: (210) 844-8963
RES: (830) 981-5883
FAX: (830) 981-5567
CEL: (210) 844-8963



E-MAIL
tomgeo@gvctc.com

ONE APEX ENERGY, INC

CHRISTIAN DOHSE
GEOLOGIST

(361) 877-3431
CHRISTIAN.DOHSE@GMAIL.COM
CORPUS CHRISTI, TX



VENTEX
Oil & Gas, Inc.

Thomas V. Dubois
Geologist

2627 CR 312
Yoakum, Texas 77995

Phone (361) 215-0223
Email: tdubois@uswide.net

Fields Exploration, Inc.

545 N. Upper Broadway, Suite 1100 East
Corpus Christi, Texas 78476

Bruce W. Fields, President
Byron W. Fields, Vice President 361-883-4721
Craig B. Fields, Vice President 361-883-4715 Fax



VENTEX
Oil & Gas, Inc.

Email mfraney@uswide.net

MATTHEW FRANEY
Geologist

600 Leopard
Suite 904
Corpus Christi, Texas 78473

Phone (361) 888-6327
FAX (361) 882-8820

GISLER BROTHERS LOGGING Co., Inc.

P.O. BOX 485
106 E. MAIN

RUNGE, TX 78151



Wes Gisler
Bus. (830) 239-4651
Mobile (361) 676-1369

Home (830) 239-4914
Direct (830) 239-4693
wes@gislerbrotherslogging.com

Robert Graham
President
grexploration@gmail.com

Phone 361-882-7681
Fax 361-882-7685
Cell 361-774-3635

GrX Inc.

Exploratory Prospects & Production Development

Mail:
P. O. Box 1843
Corpus Christi, Texas
78403-1843

Office:
606 N. Carancahua, Ste. 610
Corpus Christi, Texas
78401-0634



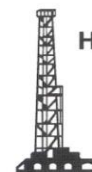
RAY GOVETT, Ph. D.
CONSULTING GEOLOGIST
361-855-0134

EPL
OIL & GAS, INC.

EPL Oil & Gas, Inc.
919 Milam
Suite 1600
Houston, TX 77002
www.eplweb.com

Kathy Hardy
Lead Asset Geoscientist

Direct: (713) 815-3292
Cell: (832) 236-7442
Fax: (713) 815-3391
khardy@eplweb.com



HART EXPLORATION, LLC.

RICK HART
Geologist / Owner

P.O. Box 729
Coldspring, Texas 77331

Cell: 512-626-3053
Email: hartexploration@aol.com

RIVIERA EXPLORATION, LLC

H. TONY HAUGLUM
President

600 LEOPARD ST.
SUITE 1704
CORPUS CHRISTI
TEXAS 78401

PHONE 361.884.1811
FAX 361.884.8071
E-MAIL THAUGLUM@SWBELL.NET

GEORGE H. HOBBS
Drilling and Completion Supervision
AFE and Well Design Preparation

P.O. Box 1711
San Benito, Texas 78586

Home (956) 399-9718
Mobile (956) 605-4563
george_hobbs@msn.com



BRENT F. HOPKINS
PRESIDENT AND CEO
GEOLOGIST

FROST BANK PLAZA
802 N. CARANCAHUA, SUITE 1000
CORPUS CHRISTI, TEXAS 78401-0015

OFFICE: (361) 884-8824
FAX: (361) 884-9623
RES: (361) 643-8373
CELL: (361) 215-4855
Email: brenth@suemaur.com



Louis R. Lambiotte
Geologist

LMP Petroleum, Inc.
615 N. Upper Broadway, Suite 1770
Corpus Christi, TX 78477
Tel: (361) 883-0923
Fax: (361) 883-7102
E-mail: geology@LMPexploration.com



REVEILLE OIL & GAS

Allen Lassiter, Geologist

711 N. Carancahua St., #906
Corpus Christi, TX 78401
alassiter@reveilleoilandgas.com

O: 361-884-6886
F: 361-884-9102
C: 361-960-5106

CHARGER EXPLORATION

MICHAEL L. JONES
PRESIDENT/GEOLOGIST

1001 MCKINNEY STREET
STE. 801
HOUSTON, TX 77002

MAIN (713) 654-0080
FAX (713) 654-0086
CELL (713) 398-3091

mjones@chargerexploration.com
www.chargerexploration.com



Vicki Marlett
Sr. Account Manager

972-690-1122 x132
Fax: 972-690-1163
Cell: 214-557-0815
e-mail: vmarlett@geotrace.com
2435 N. Central Expressway, Suite 1100
Richardson, Texas 75080
www.geotrace.com

CURTIS R. MAYO
GEOLOGICAL CONSULTANT

Reserve Analysis Prospect Evaluation
Expert Witness Prospect Generation

Fredericksburg, Texas 78624

Office: 830.992.2938 Cell: 830.765.0628 E-Mail: cmayo@cresc.net

Dennis O. Moore
Formation Evaluation
Wireline Systems - Southern Area



800 N. Shoreline Blvd., Suite 700 N. Tower
Corpus Christi, Texas 78401-3771
Office: 361-883-1561
Fax: 361-883-4390
Cell: 361-816-5144
Email: dennis.moore@bakerhughes.com

www.bakerhughes.com



J. Mark Miller
President

Phone (361) 883-7700
Fax (361) 883-7701
mark@millersmithgas.com
545 N. Upper Broadway
Suite 400
Corpus Christi, Texas 78476

Wellhead Gas Marketing

Mailing Address
615 Leopard, Ste. 640
Corpus Christi, Texas 78401-0641
361.882.7888 phone
361.882.7889 fax
361.946.2581 mobile

Contact Address
1701 Southwest Parkway, Ste. 109
College Station, Texas 77840
866.946.2581 phone
866.946.2580 fax

pmueller@muelrexp.com
www.muelrexp.com



J. Paul Mueller, Jr.
President



Daniel J. Neuberger
Geologist and President

Austin Office:
712 Windsong Trail
West Lake Hills, Texas 78746

Office (361) 548-7723
Home (512) 306-1223
dan@neuoilandgas.com

Patrick Nye
President
patrick@nyexp.us

Office: (361) 452-1455
Cell: (361) 658-1089
Res: (361) 238-2146

NYE
Exploration & Production, LLC

802 N. Carancahua, Suite 1840
Frost Bank Plaza
Corpus Christi, TX 78401
www.nyexp.us



SAXET
PETROLEUM INC.

BRIAN E. O'BRIEN

510 Bering Drive
Suite 600
Houston, Texas 77057

Main: 713-783-4883
Fax: 713-783-3039
Res: 713-784-7911
Cell: 713-899-5164

E-mail: bobrien@saxetpetroleum.com



Herradura
Petroleum, Inc.
JEFF OSBORN
Geologist

711 N. Carancahua, Ste. 1750
Corpus Christi, Texas 78475
e-mail: jeff@herradurapetroleum.com

Office: 361-884-6886
Fax: 361-884-9102
Cell: 361-537-2349

SWIFT ENERGY COMPANY



RICHARD M. PARKER P.G.
Manager / Geological Operations
TBPG License # 6056

(281) 874-2585
Mobile # 1 (713) 724-4380
Mobile # 2 (713) 206-3158

16825 NORTHCHASE DR., SUITE 400
HOUSTON, TEXAS 77060 E-mail: richard.parker@swiftenergy.com



3 Riverway, Suite 650
Houston, Texas 77056

office: 713-333-9200
cell: 832-418-3409
mprzywara@qstarllc.com

Mark S. Przywara
Vice President - Geosciences



EOG Resources, Inc.
19100 Ridgewood Pkwy
Building 2
San Antonio, TX 78259-1828
Direct: (210) 403-7852

Sara Reilly
Geologist

P. O. Box 592929
San Antonio, TX 78259-0196
Fax: (210) 403-7853
sara_reilly@eogresources.com

First Rock, Inc.

RGR Production

First Rock I, LLC

Gregg Robertson

Main Office:
600 Leopard, Suite 1800
Corpus Christi, TX 78401
361-884-0791

Field Office:
5574 FM 1344
Floresville, TX 78114
830-484-1122



Wireline Services

Weatherford International Ltd.
401 E. Sonterra Blvd., Suite 175
San Antonio, Texas 78258
USA

Sam Roach
US Gulf Coast Wireline Sales

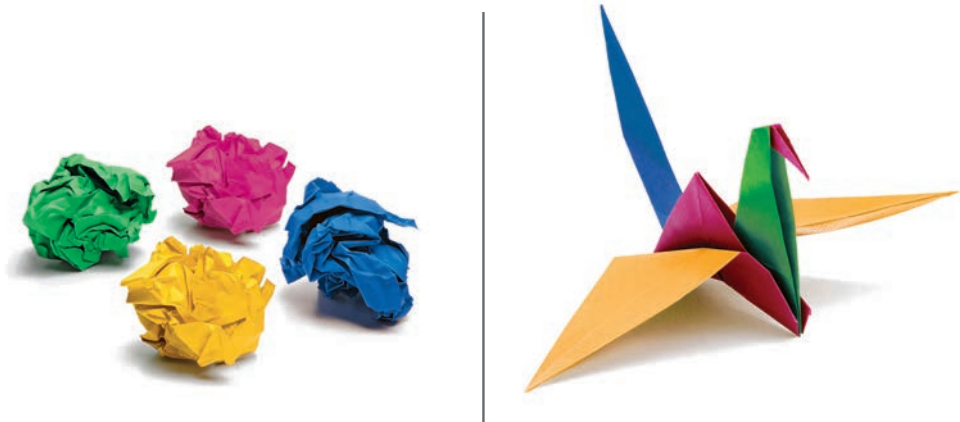
+1.210.930.7588 Direct
+1.210.930.7610 Fax
+1.210.241.2463 Mobile

sam.roach@weatherford.com
www.weatherford.com



Douglas Sartoris
exploration geologist

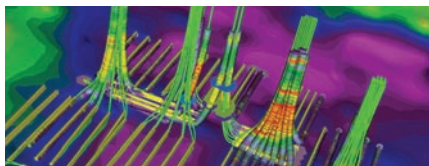
DSX energy limited, LLP
One Shoreline Plaza, 800 North Shoreline Blvd.
South Tower, Suite 2570, Corpus Christi, TX 78401
bus. 361.884.1130 fax. 361.884.1171 email: dsartoris@aol.com



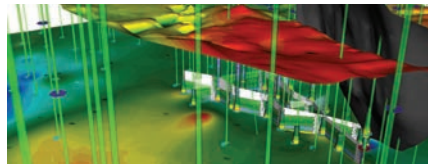
Build reservoir analyses. Watch your potential soar.

IHS PETRA® provides a unique solution to integration, analysis and manipulation of geological, geophysical, petrophysical and engineering information. With easy data loading and a powerful and flexible database, you can both effectively manage projects and quickly visualize results using interactive mapping, cross sections, log plots, cross plots and more—all within a single system. Superior technical support and proven integration of customer enhancements make PETRA the highest-ranked¹ geological interpretation tool in the E&P industry for both reliability and accuracy and ease of use. **Energy information, refined.**

¹Welling & Company Geological & Geophysical Software Study, 2009



Directional Well Module



3D Visualization Module

ihs.com/petra-ccgs-1



The Source
for Critical Information and Insight

©2010 IHS Inc. All rights reserved.