

# **BULLETIN**

**Corpus Christi  
Geological Society**



and

**Coastal Bend  
Geophysical Society**



**October  
2014  
ISSN 0739 5620**

# American Shoreline, Inc.



Specializing in  
Oil & Gas Exploration  
& Wind Energy

Compliments of

Paul Strunk, President

Jena Nelson, VP Finance & Administration

Dennis Taylor, VP Geology

802 N. Carancahua  
Frost Bank Plaza, Suite 1250  
Corpus Christi, Texas 78401  
(361) 888-4496

[www.amshore.com](http://www.amshore.com)

## SPONSORS

KNOWLEDGE REVEALED

# PURPOSE DRIVEN

- Unrivaled land seismic acquisition capabilities
- Specific solutions for all terrains and environments (land, shallow water/transition zone and OBC)
- Purpose driven crews with proven experience around the world
- Processing and Interpretation services revealing the project knowledge you need
- Full azimuth 3D and 3C coverage in unconventional resource plays
- Multi-Client opportunities in North America, Latin America and Australasia
- Proven experience in:
  - Azimuthal anisotropy resolution and fracture identification
  - Multicomponent processing
  - AVO processing and inversion



INNOVATIVE  
GEOPHYSICAL  
SOLUTIONS



[geokinetics.com](http://geokinetics.com)



## **CORPUS CHRISTI GEOLOGICAL SOCIETY**

**P.O. BOX 1068 \* C.C. TX. 78403**

**2014-2015**

[www.ccgeo.org](http://www.ccgeo.org)

### **OFFICERS**

President	Leighton Devine	361-510-8872	<a href="mailto:ldevine@suemaur.com">ldevine@suemaur.com</a>
President Elect			
Vice President	Randy Bissell	361-885-0113	<a href="mailto:randyb@headington.com">randyb@headington.com</a>
Secretary	Allison Corcoran	361-882-8400	<a href="mailto:allison@aaoperating.com">allison@aaoperating.com</a>
Treasurer	Zachary Corcoran	361-658-5850	<a href="mailto:zcorcoran1982@gmail.com">zcorcoran1982@gmail.com</a>
Past President	Bob Critchlow	361-882-3046	<a href="mailto:bcritchlow@virtexoperating.com">bcritchlow@virtexoperating.com</a>
Councilor I	Rick Paige	361-884-8824	<a href="mailto:rickp@suemaur.com">rickp@suemaur.com</a>
Councilor II	Mike Lucente	361-883-0923	<a href="mailto:mikel@impexploration.com">mikel@impexploration.com</a>

### **AAPG DELEGATES**

2006-14	Dennis Moore	361-886-5144	<a href="mailto:dennis.moore@bakerhughes.com">dennis.moore@bakerhughes.com</a>
---------	--------------	--------------	--

### **EDITORS**

Bulletin Editor	Marian Wiedmann	361-855-2542	<a href="mailto:wiedgulf@aol.com">wiedgulf@aol.com</a>
Bulletin Tech. Editor	Susan Stone	361-739-4759	<a href="mailto:stonesciences@yahoo.com">stonesciences@yahoo.com</a>
Web Master	Chris Davis	361-537-1508	<a href="mailto:cdavis@spurfire.com">cdavis@spurfire.com</a>

### **GEOLOGICAL SOCIETY COMMITTEES & CHAIRPERSONS**

Advertising	Sara Miller	361-887-2691	<a href="mailto:sara_miller@eogresources.com">sara_miller@eogresources.com</a>
Business Cards	Christian Dohse	361-877-3431	<a href="mailto:christian.dohse@gmail.com">christian.dohse@gmail.com</a>
Arrangements	Allison Corcoran	361-888-8288	<a href="mailto:allison@aaoperating.com">allison@aaoperating.com</a>
Bloodmobile	Mike Lucente	361-883-0923	<a href="mailto:mikel@impexploration.com">mikel@impexploration.com</a>
Earth Day	Alan Costello	361-888-4792	<a href="mailto:acostello@royalcctx.com">acostello@royalcctx.com</a>
Continuing Ed.	Stephen Thomas	361-888-8880	<a href="mailto:stthomas@virtexoperating.com">stthomas@virtexoperating.com</a>
Education & Scholarship	Dawn Bissell	361-960-2151	<a href="mailto:bissells@swbell.net">bissells@swbell.net</a>
Fishing Tournament	Leighton Devine	361-882-8400	<a href="mailto:ldevine@suemaur.com">ldevine@suemaur.com</a>
History	Ray Govett	361-855-0134	<a href="mailto:ray30@hotmail.com">ray30@hotmail.com</a>
Membership	Dorothy Jordan	361-885-0110	<a href="mailto:dorothyj@headington.com">dorothyj@headington.com</a>

Type Logs	Randy Bissell	361-885-0113	<a href="mailto:randyb@headington.com">randyb@headington.com</a>
University	Frank Cornish	361-883-0923	<a href="mailto:frank.cornish@gmail.com">frank.cornish@gmail.com</a>
Liaison	Zach Corcoran	361-902-2857	<a href="mailto:zcorcoran1982@gmail.com">zcorcoran1982@gmail.com</a>



**COASTAL BEND GEOPHYSICAL SOCIETY  
P.O. BOX 2741 \* C.C. TX. 78403  
2014-2015**

**OFFICERS**

President	Lonnie Blake	361-883-2831	<a href="mailto:lonnie_blake@eogresources.com">lonnie_blake@eogresources.com</a>
Vice President	Bob Witherspoon	361-884-8824	<a href="mailto:bobw@suemaur.com">bobw@suemaur.com</a>
Secretary/ Treasurer	Matt Hammer	361-888-4792	<a href="mailto:mhammer@royalcctx.com">mhammer@royalcctx.com</a>

**COMMITTEES AND CHAIRPERSONS**

Membership	Dorothy Jordan	361-885-0110	<a href="mailto:dorothyj@headington.com">dorothyj@headington.com</a>
	Randy Bissell	361-885-0113	<a href="mailto:randyb@headington.com">randyb@headington.com</a>
Golf Chairman	Fermin Munoz	361 960-1126	<a href="mailto:fmunoz04@hotmail.com">fmunoz04@hotmail.com</a>
Scholarship/ Chairman	Ed Egger	361-947-8400	<a href="mailto:edegger69@gmail.com">edegger69@gmail.com</a>
Education	Vicki Marlett	214-557-0815	<a href="mailto:vmarlett@geotrace.com">vmarlett@geotrace.com</a>

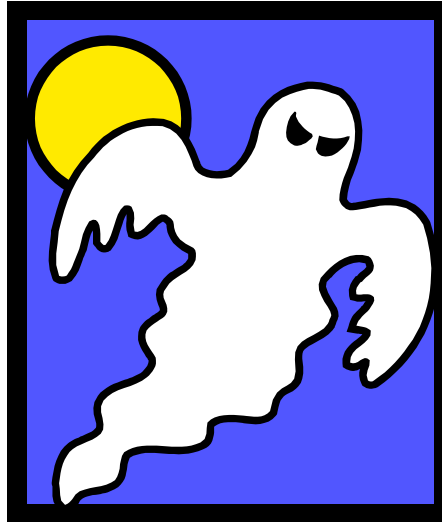
**Visit the geological  
Web site at  
[www.ccgeo.org](http://www.ccgeo.org)**

# TABLE OF CONTENTS

Officers, Committees, and Chairpersons, CCGS, CBGS.....	2 & 3
Blood Drive.....	5
Calendar of Meetings and Events.....	6 & 7
CCGS President’s Letter.....	8
CBGS President’s Letter.....	10
Ideas? Presentations? References? Volunteers?.....	12
Luncheon Meeting Announcement.....	14
Abstract “The use of barostratigraphy for identifying and categorizing pressure compartmentalization:.....	16
Seismic Workshop (Geotrace).....	17
CBGS Golf Tournament.....	19
CCGS Scholarship Guidelines and Application.....	20,21
GCAGS 2015—Houston.....	24,25,26
Geo Link Post.....	32
Type Logs of South Texas Fields.....	33
Order OIL MEN DVD.....	34
Wooden Rigs Iron Men.....	35
Professional Directory.....	36

# **\*\*\*BLOOD DRIVE\*\*\***

**OCTOBER - 2014**



*Don't be spooked! Go give Blood!  
You'll be glad you did!*

**THE BLOODMOBILE WILL BE AT SOME CONVENIENT  
LOCATIONS – YOU CAN LOG ON TO:**

[www.coastalbendbloodcenter.com](http://www.coastalbendbloodcenter.com)

**When you give blood: They have us listed as C.C. Geological Society. Our number with them is 4254 & it would be helpful if you can please give them that number also.**

There is a nationwide shortage of blood – and we appeal to our members to give the gift of life. Please tell the Blood Center that you are giving on behalf of the **C.C. Geological Society**. For info. their ph. no. is **855-4943**.

**This message approved by Mike Lucente....**

## CCGS/CBGS JOINT MEETING SCHEDULE 2014-2015

September 2014							October 2014							November 2014						
S	M	T	W	Th	F	S	S	M	T	W	Th	F	S	S	M	T	W	Th	F	S
	1	2	3	4	5	6				1	2	3	4							1
7	8	9	<u>10</u>	11	12	13	5	6	7	8	9	10	11	2	3	4	5	6	7	8
14	15	16	17	18	19	20	12	13	14	<u>15</u>	16	17	18	9	10	11	12	13	14	15
21	22	23	24	25	26	27	19	20	21	22	23	24	25	16	17	18	<u>19</u>	20	21	22
28	29	30					26	27	28	29	30	31		23	24	25	26	27	28	29
														30						

Sept. 10, 2014  
5:30p.m.—8:30p.m.  
Kickoff BBQ  
Howard’s BBQ & Catering  
1002 Antelope Street

Oct. 15—11:30a.m.—1:00p.m.  
Speaker: Ken Williams—  
Halliburton.  
“Barostratigraphy”

Nov. 19—11:30a.m.—1:00p.m.  
Speaker: Tony Hauglum--Rivera  
Exploration. “Eagleford Update”

December 2014							January 2015							February 2015						
S	M	T	W	Th	F	S	S	M	T	W	Th	F	S	S	M	T	W	Th	F	S
	1	2	3	4	5	6					1	2	3	1	2	3	4	5	6	7
7	8	9	<u>10</u>	11	12	13	4	5	6	7	8	9	10	8	9	10	11	12	13	14
14	15	16	17	18	19	20	11	12	13	14	15	16	17	15	16	17	<u>18</u>	19	20	21
21	22	23	24	25	26	27	18	19	20	<u>21</u>	22	23	24	22	23	24	25	26	27	28
28	29	30	31				25	26	27	28	29	30	31							

Dec. 10—11:30a.m.--1:00p.m.  
Speaker: Woodson Godfrey—  
PaleoSource. “Distinguishing a  
Resource Play

Feb. 18—11:30a.m.—1:00p.m.  
Speaker: Collegiate Month.  
“Presentation by TAMUCC,  
TAMUK and DelMar”



## CCGS/CBGS JOINT MEETING SCHEDULE 2014-2015

March 2015							April 2015							May 2015						
S	M	T	W	Th	F	S	S	M	T	W	Th	F	S	S	M	T	W	Th	F	S
1	2	3	4	5	6	7				1	2	3	4						1	2
8	9	10	11	12	13	14	5	6	7	8	9	10	11	3	4	5	6	7	8	9
15	16	17	18	19	20	21	12	13	14	15	16	17	18	10	11	12	13	14	15	16
22	23	24	25	26	27	28	19	20	21	22	23	24	25	17	18	19	20	21	22	23
29	30	31					26	27	28	29	30			24	25	26	27	28	29	30
														31						

Special Guest Lecturer to be  
Announced.

### Calendar of Meetings and Events Calendar of Area Monthly Meetings

- Corpus Christi Geological/Geophysical Society.....Third Wed.—11:30a.m.
- SIPES Corpus Christi Luncheons..... Last Tuesday—11:30a.m.
- South Texas Geological Society Luncheons..... Second Wed—noon San Antonio
- San Antonio Geophysical Society Meetings..... Fourth Tuesday
- Austin Geological Society..... First Monday
- Austin Chapter of SIPES.....First Thursday
- Houston Geological Society Luncheons..... Last Wednesday
- Central Texas Section of Society of Mining, Metallurgy & Exp..... 2<sup>nd</sup> Tues every other month  
In San Antonio



## **CCGS PRESIDENT'S LETTER**

Thanks to all the CCGS volunteers and the staff of Howard's BBQ we had another successful Annual Kickoff Event. I hope everyone enjoyed the new venue, and had a chance to catch-up with friends and colleagues. Thank you to Baker for sponsoring the "refreshments" and Core Lab for sponsoring our students. It was great to see everyone.

I love this time of year. The dog days of summer are over, and I finally have spent some time enjoying the perks of living in South Texas. My shotgun barrel has been warm for the first time in a long while, and I managed to have a few successful days of fishing mixed in. The kiddos are back in school and keeping my wife and I busy with all of their extra-curricular activities. Never a dull moment.




We have lots of things happening this month. Our Luncheon meeting will be October 15<sup>th</sup>. Kenneth E. Williams from Halliburton will be giving us a talk on Barostratigraphy. For all you students, completed scholarship applications are due October 18<sup>th</sup>. The scholarship committee will be announcing recipients at the November meeting. The Oilman's Tennis Tournament is October 10<sup>th</sup> and 11<sup>th</sup>. Finally, the 64<sup>th</sup> Annual GCAGS convention is in Lafayette, LA October 5-7, 2014. I encourage everyone to attend, especially those who have volunteered to be a part of GCAGS 2016 right here in Corpus Christi.

Once a week, on my favorite social media website, I receive a post outlining the weeks major discoveries in science and technology. It is some of my favorite reading material of the week. The articles are entertaining and are typically from one of the many weekly science journals. It is a reminder to keep challenging myself. People just like you and I are out there on the frontiers of science. The Oil and Gas Industry is one of the avenues. It is a great challenge to stay on top of the learning curve while focused on the task at hand. I wish everyone the best of luck.



**Leighton Devine—CCGS President**


## SPONSORS



**Nueces Energy, Inc.**  
P.O. Box 252  
Corpus Christi, Texas 78403  
Office: (361) 884-0435  
Fax: (361)-654-1436  
[www.nuecesland.com](http://www.nuecesland.com)

Nueces Energy, Inc. is a complete land services company in the business of providing professional landmen and project management to various energy related jobs primarily in the oil and gas industry.

With over 30 years of industry experience, we specialize in determining surface and subsurface ownership and negotiating and acquiring contracts, rights of way agreements, and easements to provide our clients with the legal right to explore and develop oil and gas resources. We provide a full service land company capable of managing any project no matter how large or small.



**THUNDER EXPLORATION, INC.**  
Celebrating 30+ years of prospect generation and exploration in the following South Texas plays and trends.

Frio	San Miguel	Edwards
Jackson	Austin Chalk	Pearsall
Yegua	Eagle Ford	Sligo
Wilcox	Buda	Cotton Valley
Olmos	Georgetown	Smackover

Thunder is currently seeking non-operated working interest participation in projects and prospects.

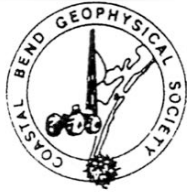
Contact Walter S. Light Jr.  
President/Geologist  
713.823.8288  
EMAIL: [wthunderx@aol.com](mailto:wthunderx@aol.com)

# Headington Energy Partners, LLC



---

902 North Tower – 500 N. Shoreline Blvd. – Corpus Christi, Texas  
Phone: (361) 885-0110



## CBGS PRESIDENT'S LETTER

You should still have time to sign up for the following: October 10<sup>th</sup>—CBGS Golf Tournament—Northshore Country Club. Flyer with details in the bulletin. Contact Fermin Munoz to play or sponsor. Scholarship applicants being reviewed.

October 22<sup>nd</sup>—CBGS Geophysical Workshop—Attributes of Attributes by Fred Hilterman. Free to CBGS members and students. Flyer with details in the bulletin. Contact Vicki Martlett for information.

SEG Annual Convention—Denver Oct. 26-31. Let Lonnie Blake know if you plan on attending, I would like your thoughts on the meeting Numerous Continuing Education opportunities <http://www.seg.org/professional-development/seg-on-demand>

SEG interpretation has articles on Karst interpretation, Microseismic monitoring/interpretation and CSEM interpretation/Integration Geophysical Society of Houston Webinar—Interpreters Guide to Depth Imaging—8A.M. to 12A.M. Oct 6<sup>th</sup>-Oct. 9<sup>th</sup> LJB—Good class.....

An opportunity to take a class on the web about practical approach to prestack depth migration--\$390.

**Parting thought:** I was thinking about using “more power” to solve a particularly difficult seismic problem when I happened to run across a saying from George Orwell: *In real life it is always the anvil that breaks the hammer – George Orwell* I quit thinking about it and had a beer instead. Till next month

**Lonnie Blake** – CBGS President, Geophysical Advisor, EOG Resources-Corpus Division

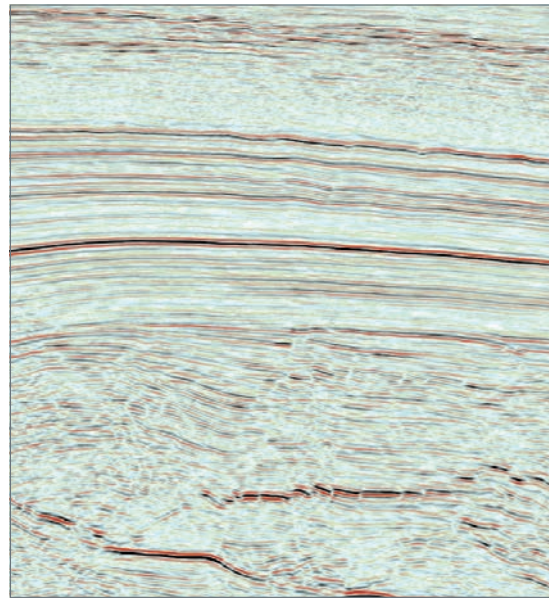
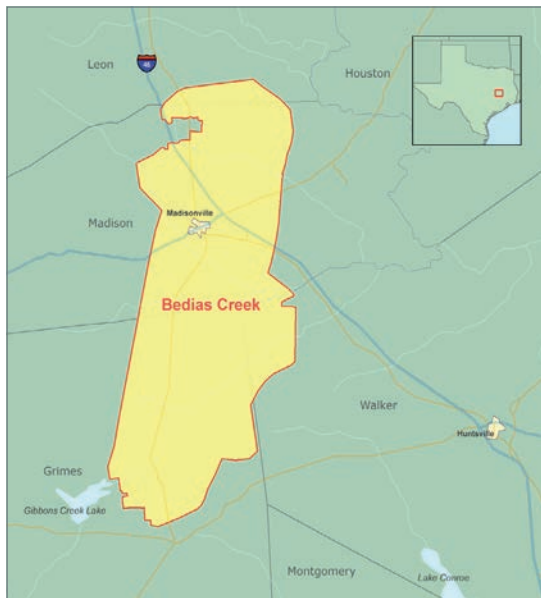
### Monthly Activity Summary

Seismic Crews - US Onshore	Current Month	Last Month	Difference	(Per SEG/Seismic Crew Reports Survey)
	Onshore/Offshore	Onshore/Offshore		
	43/11	48/13	-7	
	Current Month	Last Month	Last Year - Monthly	(Per Texas RRC, last reported)
Texas Production	MMBO/BCF	MMBO/BCF	MMBO/BCF	
Oil	69.8	69	63.2	
Gas	648	638	701	
	Current Month	Yr to date - 2014	Yr to date - 2013	
Texas Drilling Permits	2,440	16,719	15,027	
Oil wells	705	4,890	4,783	
Gas wells	136	912	946	
Oil and Gas wells	1,485	10,209	8,757	
Other	9	130	121	
Total Completions	2,556	20,657	17,221	
Oil Completions	2,157	17,787	13,062	
Gas Completions	303	2,170	3,677	
New Field Discoveries	3	27	38	
Other	96	700	482	



# Bedias Creek 3D

Madison, Grimes, Walker,  
and Leon Counties, Texas



- 323 mi<sup>2</sup> of high-quality, high-fold data (110-fold) acquired using cableless **UNITE** crews and a dynamite source
- State-of-the-art processing, including 5D Interpolation and Orthorhombic Pre-Stack Time Migration
- Data now available

For more detailed information contact us:

Scott Tinley +1 832 351 8544 scott.tinley@cgg.com  
Cheryl Oxsheer +1 832 351 8463 cheryl.oxsheer@cgg.com

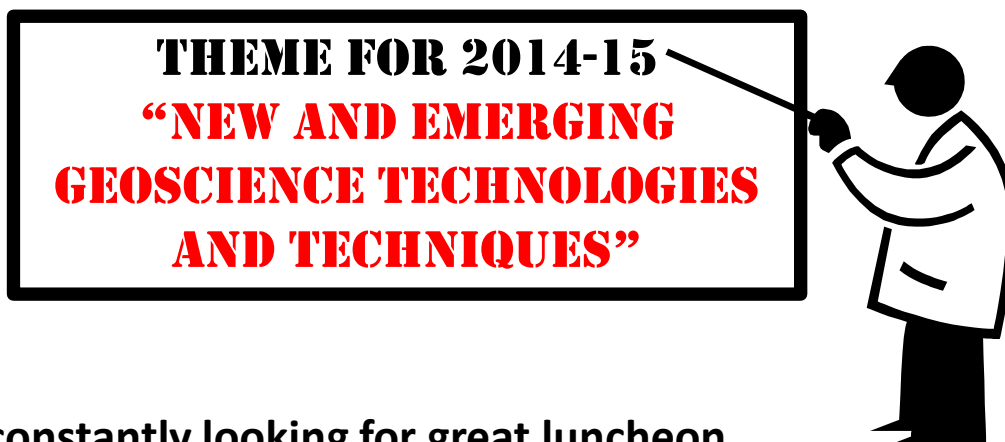
[cgg.com/multi-client](http://cgg.com/multi-client)





TALKS TALKS TALKS **TALKS!!!**

**We want your presentations!**



We are constantly looking for great luncheon presentations for our monthly events.

Some of the best talks are those from our membership – individuals and companies with fresh ideas and emerging technologies or new discoveries to showcase.

Or...Is there a presentation you've heard at SEG, SPE, AAPG, GCAGS, HGS, SIPES, TAMUCC, TAMUK, Del Mar or another forum? Please let us know. We may like it, too.

***Ideas? Presentations? References? To Volunteer?***

Please Contact: Randy Bissell, CCGS VP 2014-2015  
[randyb@headington.com](mailto:randyb@headington.com) or (361) 816-4920 or (361) 885-0113

SPONSORS

# That old gas kick could be your next discovery!

## Characterization of Unconventional Reservoirs

Traditional methods of core analysis cannot yield acceptable results when applied to unconventional reservoirs such as gas shales, tight gas sands, coals and thin bed formations.

Production controls on these reservoirs are not limited to hydrocarbons in place, permeability and porosity. Pay identification requires an understanding of complex lithologies and exotic mineralogies.

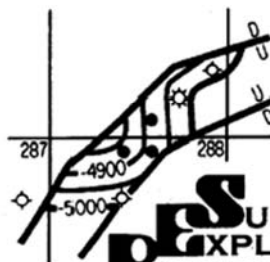
Only Core Lab offers the comprehensive range of unique technologies required to optimize your unconventional reservoirs.

Geological Petrophysical Geomechanical Geochemical



To learn more about our unique unconventional reservoir evaluation services contact Core Lab. (713) 328-2121 or (361) 289-5457 psinfo@corelab.com

© 2005 Core Laboratories. All rights reserved.



**PSUEMAUR**  
**EXPLORATION &**  
**PRODUCTION, LLC**

1000 Frost Bank Plaza  
802 North Carancahua Street  
Corpus Christi, TX 78470-0400  
Phone: (361) 884-8824  
Fax: (361) 884-9623

*Exploring Texas  
since 1968*

Corpus Christi Geological Society & Coastal Bend Geophysical Society

## **LUNCHEON MEETING ANNOUNCEMENT**

**Wednesday, October 15, 2014**

- Location:** Corpus Christi Town Club, 6<sup>th</sup> Floor (800 North Shoreline)
- Bar Sponsor:** Vicki Marlett with Geotrace
- Student Sponsor:** Core Lab (Juan Cabasos) and the CCGS
- Time:** 11:30 a.m. Bar, Lunch follows at 11:45 a.m., Speaker at Noon.
- Cost:** **\$25** (a \$3 surcharge if no reservation). No-shows will be billed.
- Reservations:** Please by Monday before – email [allison@aaoperating.com](mailto:allison@aaoperating.com)
- 

### **Luncheon Topic: The Use of Barostratigraphy for Identifying and Categorizing Pressure Compartmentalization**

Presented by Kenneth E. Williams, Halliburton

Permeability and geologic time are the primary controlling factors for the generation and dissipation of overpressures. With respect to increasing depth, pressure gradients within any layer may increase, decrease, or remain essentially constant. Pore pressure gradients also vary laterally as a response to changes in permeability, which do not always correspond to seismic or correlation surfaces. In some cases, pressure may not respond at all to the presence of a fault, indicating that the fault zone is permeable and that either vertical or lateral fluid flow has allowed pressure to equilibrate across the fault zone. Some faults act as pressure barriers where an overpressured seal does not allow for fluid flow across the fault zone. Barostratigraphy objectively describes the present-day results of the subsurface processes that create overpressures and those that allow abnormal pressures to be maintained and dissipate. Additionally, barostratigraphy provides a formal method to better categorize pressure compartmentalization by providing a framework for the analysis of the stratigraphic nature of subsurface pressure compartments. It is a classification that systematically arranges and partitions subsurface units based on their inherent properties and pressure attributes. These units are identifiable based on observable criteria. They are correlatable, mappable, and useful in identifying the current pressure conditions in all or part of a basin. The prediction of pore pressure at proposed well locations can be optimized by the use of barostratigraphy, which aids in the analysis of subsurface pressure magnitudes and variation, and in basin modeling. Additionally, an understanding of the hydrocarbon distribution in an area (and prospect risking) is



enhanced, as is the analysis of seismic velocities and their impact on imaging due to the close relationship between velocity and effective stress.

**Reference:**

Hall, Kevin B, Kenneth E. Williams, Joel L. Gevirtz and Matt J. Croy, 2014, The use of barostratigraphy for identifying and categorizing pressure compartmentalization, Interpretation, February 2014, pp. SB27-SB44

---

**About our presenter:** Ken Williams got into the oil business back in the third quarter of the last century (1974) and spent 28 years with Texaco. He moved to Midland in 1978 as a District Geologist, joined the WTGS and is still a member. Time at Texaco was well spent in various exploration and managerial roles including 6 years on the Worldwide Exploration Risk Committee. He got involved in basin modeling and petroleum systems analysis in the mid 1980's and used those tools in basins around the world trying to follow the oil from source to reservoir. After retiring from Texaco, he worked for 7 years using basin modeling for overpressure analysis before KSI was bought by Halliburton and the focus of the modeling turned around and began looking back at the source rock to model what was retained and not expelled and in trying to figure out how that works. He has 22 publications, 37 abstracts, 2 patents (with 7 pending).

## The use of barostratigraphy for identifying and categorizing pressure compartmentalization

Kevin B. Hall<sup>1</sup>, Kenneth E. Williams<sup>2</sup>, Joel L. Gevirtz<sup>1</sup>, and Matt J. Croy<sup>3</sup>

### Abstract

Permeability and geologic time are the primary controlling factors for the generation and dissipation of overpressures. With respect to increasing depth, pressure gradients within any layer may increase, decrease, or remain essentially constant. Pore pressure gradients also vary laterally as a response to changes in permeability, which do not always correspond to seismic or correlation surfaces. In some cases, pressure may not respond at all to the presence of a fault, indicating that the fault zone is permeable and that either vertical or lateral fluid flow has allowed pressure to equilibrate across the fault zone. Some faults act as pressure barriers where an overpressured seal does not allow for fluid flow across the fault zone. Barostratigraphy objectively describes the present-day results of the subsurface processes that create overpressures and those that allow abnormal pressures to be maintained and dissipate. Additionally, barostratigraphy provides a formal method to better categorize pressure compartmentalization by providing a framework for the analysis of the stratigraphic nature of subsurface pressure compartments. It is a classification that systematically arranges and partitions subsurface units based on their inherent properties and pressure attributes. These units are identifiable based on observable criteria. They are correlatable, mappable, and useful in identifying the current pressure conditions in all or part of a basin. The prediction of pore pressure at proposed well locations can be optimized by the use of barostratigraphy, which aids in the analysis of subsurface pressure magnitudes and variation, and in basin modeling. Additionally, an understanding of the hydrocarbon distribution in an area (and prospect risk) is enhanced, as is the analysis of seismic velocities and their impact on imaging due to the close relationship between velocity and effective stress.

To obtain a copy of this paper go to:

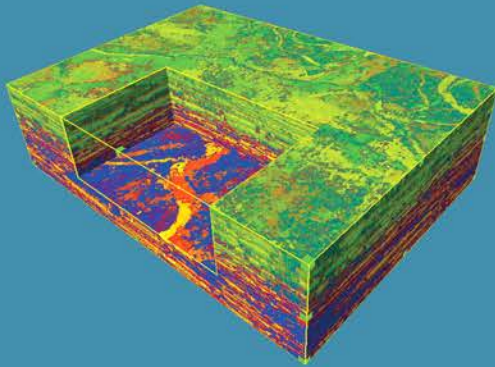
<http://dx.doi.org/10.1190/INT-2013-0079.1>



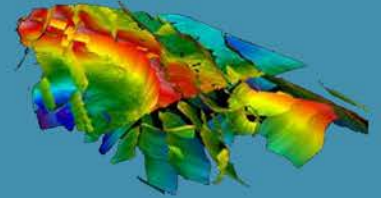
# THE ATTRIBUTES OF ATTRIBUTES

-Seismic Workshop-

When: Wednesday, October 22nd, 8:30am-12:30pm  
Registration begins at 8:00am



Where: EOG Resources  
539 N Carancahua St., Suite 900  
Corpus Christi, Texas, 78401



Speaker: Fred Hilterman

To register call or email Vicki Marlett:  
972-690-1122 ext.132  
[vmarlett@geotrace.com](mailto:vmarlett@geotrace.com)

Continental Breakfast Sponsored by GeoTrace/Vicki Marlett



Geotrace®

sponsors



# Winn Exploration Co., Inc.

Actively Seeking High Quality  
Drilling Prospects

### Contacts:

Mike Layman (Geophysicist)	361-844-6922
Tom Winn (Geologist)	361-844-6992
Southern Winn (Geologist)	361-844-6998

800 North Shoreline Blvd.  
19th Floor, North Tower  
Corpus Christi, Texas 78401

Office: 361-844-6900      Fax: 361-844-6901

## WEL-LAB

HYDROCARBON LOGGING SERVICE



*Operating in South Texas and Gulf Coast since 1961*

*Contact: Mike Bullard*

*P.O. Box 1011*

*Kingsville, Texas 78364*

*361-221-9717*

*Email: md\_bullard@sbcglobal.net*

## A Great Place For Business

In the heart of the Business District  
Broadway at Leopard

- Onsite Management
- Conference Room
- Deli & Vending Room
- Security Card Access
- High Speed Elevators
- View of Corpus Christi Bay

**COMMITTED TO EXCELLENCE**  
Yesterday • Today • Tomorrow

The  
**600**  
BUILDING

Contact  
Ellen Blasingame  
**698-6000**

ecblasingame@netscape.net





# CBGS GOLF TOURNAMENT

Coastal Bend Geophysical Society  
NorthShore Country Club  
October 10, 2014  
1:00 p.m. Shotgun Tee Time  
Four-Man Scramble  
100 Player Limit \* Sign up Early



Name \_\_\_\_\_  
Email \_\_\_\_\_  
Company Name \_\_\_\_\_  
Address \_\_\_\_\_  
City, State, Zip \_\_\_\_\_  
Phone \_\_\_\_\_  
\_\_\_\_ Yes, Please Place on a Team  
\_\_\_\_ I want to be on a Team with: (list below)  
Player 2: \_\_\_\_\_  
Player 3: \_\_\_\_\_  
Player 4: \_\_\_\_\_

\_\_\_\_\_ \$100 per Golfer  
\_\_\_\_\_ \$400 per Team (4 players)  
\_\_\_\_\_ Sponsorship Total  
\_\_\_\_\_ **TOTAL AMOUNT DUE**

**PAYMENT INFORMATION**  
\_\_\_\_ Check Enclosed  
Make Checks payable to:  
Coastal Bend Geophysical Society  
c/o Fermin Munoz  
619 E. Broadway  
Portland, TX 78374  
361-960-1126  
FMunoz04@hotmail.com

## Sponsorships

#\_\_\_ Golf Beverage Cart \$700 ea. \_\_\_\_\_  
#\_\_\_ Golf Holes (18) \$200 ea. \_\_\_\_\_  
#\_\_\_ Longest Drive  
(2) \$100 ea. \_\_\_\_\_  
# \_\_\_ Closest to the Pin  
(2) \$100 ea. \_\_\_\_\_  
Door Prize Sponsor \_\_\_\_\_

**Total Sponsorship \$** \_\_\_\_\_

## NorthShore Country Club

801 E. Broadway St.  
Portland, TX 78374

Entry Fee Includes:

- Green Fees
- Range Balls
- Carts
- Beverages on the Golf Course
- Door Prizes
- Dinner Buffet



# Corpus Christi Geological Society Scholarship Application Guidelines Spring 2015 Semester

1. Applicant must be majoring in Earth Sciences and currently attending a college in the local area.
2. Fill out the application form clearly, completely, and sign it.
3. Short essay clearly explaining how this scholarship will assist you in achieving your geologic career goals and the reasons your application should be considered by the Committee.
4. Two (2) letters of recommendation - one must be from a geoscience faculty member or from a supervisor with whom applicant has worked with in a geoscience undertaking.
5. Applicant must provide a school transcript, please make sure it has your name on it. A web printout is acceptable.
- 6. Applications must be postmarked by: October 18, 2014**

Mail completed application to: Dawn Bissell, CCGS Scholarship Committee  
Chairman, 253 Circle Drive, Corpus Christi, TX 78411

Please send an email to [bissells@swbell.net](mailto:bissells@swbell.net) once you've mailed your application.  
***Award notifications will be sent via email!!!***

Please read requirements carefully and submit only complete applications.  
Applicants who have received a CCGS scholarship in the past are eligible to apply again.

Scholarships will be awarded based on merit and need. The award amounts may vary with the minimum individual award being \$500.

Award recipients will be recognized at the monthly **luncheon November 18, 2014** and are encouraged to attend.

#### Board Members:

Dawn Bissell - Chairman  
Brent Hopkins - Vice Chairman  
Leighton Devine - CCGS President  
Patrick Nye - Secretary/Treasurer

Bob Critchlow - Member  
Beth Friday - Member  
JR Jones - Member



Corpus Christi Geological Society  
Scholarship Application Form  
Spring 2015  
(Must be postmarked by October 18, 2014)

Last Name: \_\_\_\_\_ First Name: \_\_\_\_\_

Mailing address: \_\_\_\_\_  
(where award may be mailed if applicant is unable to attend award presentation)

City: \_\_\_\_\_ State: \_\_\_\_\_ Zip Code: \_\_\_\_\_

**Active Email:** \_\_\_\_\_

*Award notifications will be sent via email!!! Please email [bissells@swbell.net](mailto:bissells@swbell.net) once you've submitted your application.*

Daytime Phone: \_\_\_\_\_ Alternate Phone: \_\_\_\_\_

University Currently Attending: \_\_\_\_\_

Department: \_\_\_\_\_ Major: \_\_\_\_\_

Scholarship is for class level (circle one):

Freshman    Sophomore    Junior    Senior    Graduate Student

Total Hours Completed: \_\_\_\_\_ Overall GPA (Minimum 2.5): \_\_\_\_\_

Total Hours - Geology: \_\_\_\_\_ Geology GPA (Minimum 3.0) \_\_\_\_\_

Hours Planned for Scholarship Semester: \_\_\_\_\_ Geology Hours: \_\_\_\_\_


Will this scholarship be used toward field camp?      Yes      No

Prior recipient of CCGS Scholarship?      Yes      No

\_\_\_\_\_  
Applicant Signature      Date

Mail application, along with essay, two letters of recommendation, and transcript to Dawn Bissell, CCGS Scholarship Committee Chairman  
253 Circle Drive, Corpus Christi, TX 78411 **Must be postmarked by October 18, 2014.**  
**Email [bissells@swbell.net](mailto:bissells@swbell.net) once you've mailed your application. Award notifications will be made via email!!!**

# SPONSOR




## SOUTH TEXAS is MEGA GRANDE

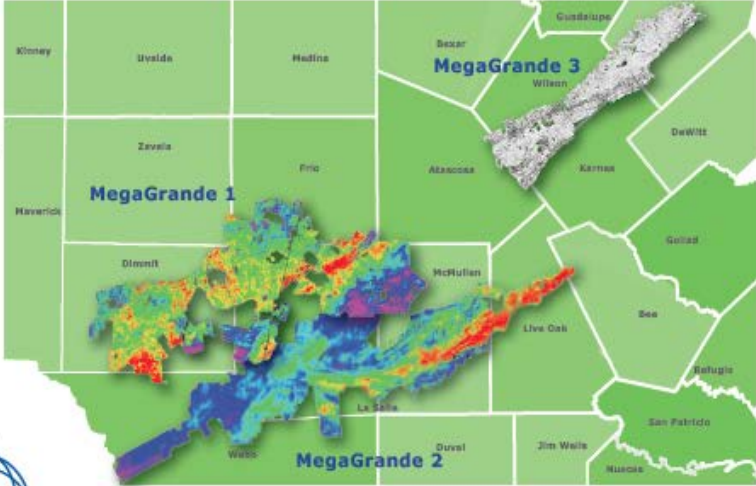
### NEW MERGED VOLUMES WITH PRESTACK VTI MIGRATION

Now our RG3D South Texas Multi Client data is better than ever. With over 4500 square miles of RG3D newly merged and reprocessed volumes you get:

- Common surface consistent processing solution including refraction statics covering the entire program area using input from all the individual surveys
- Flat PSTM gathers up to ~50 degrees (VTI correction included on PSTM)
- Continuous in-line/cross-line numbering processed on a single 3D CDP bin grid
- Wide azimuth superior data quality imaged seismic data
- Processing: VTI-Only Anisotropic Pre-Stack Time Migration
- Bin size 82.5 x 82.5 ft.



Global Geophysical Services, Inc.  
tel +1 713-972-9200 [www.globalgeophysical.com](http://www.globalgeophysical.com)



**CONTACT US at [SoTex@globalgeophysical.com](mailto:SoTex@globalgeophysical.com)**

Download the White Paper at: [www.globalgeophysical.com/SouthTexasMerge](http://www.globalgeophysical.com/SouthTexasMerge)

[www.GeoSteering.com](http://www.GeoSteering.com)

281-573-0500  
[info@geosteering.com](mailto:info@geosteering.com)

Free introductory consultation with modeling: let us demonstrate whether images or propagation resistivity could add value to your well.

**Personnel with degrees & 20+ years of oilfield experience**

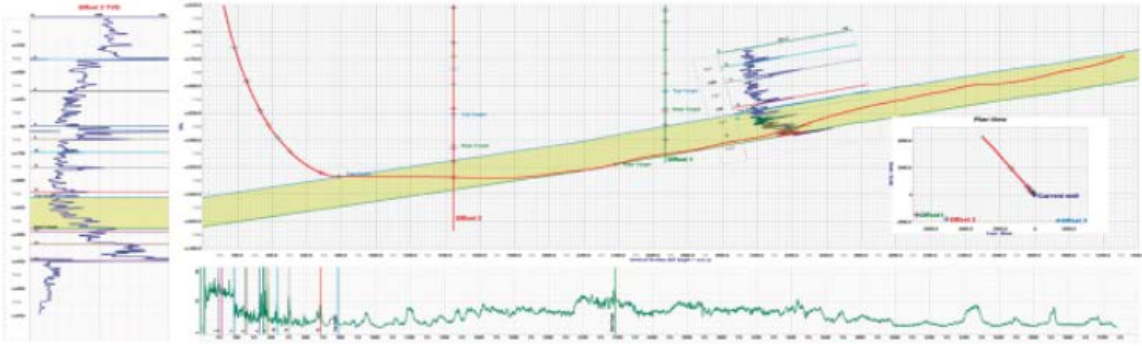
**Proprietary software**

**TST interpretation for GR only jobs**

**Image displays / interpretation for jobs with azimuthal GR, resistivity or density**

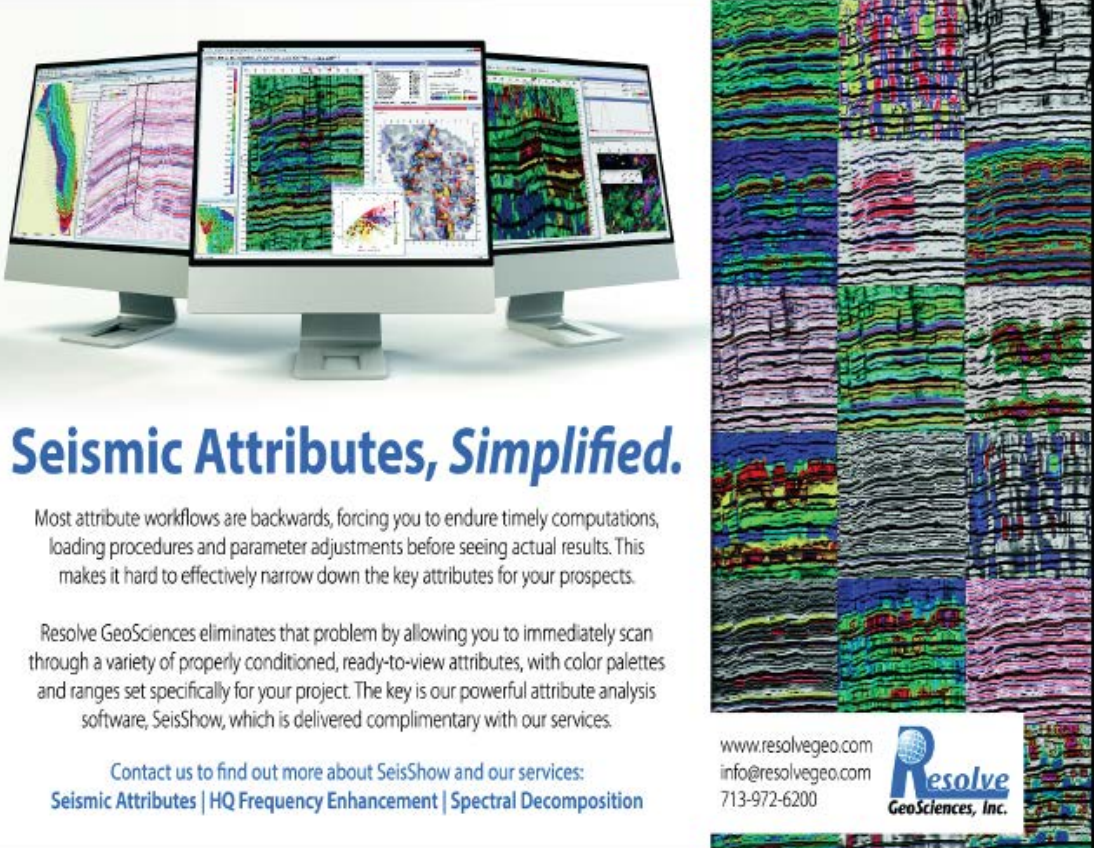
**Resistivity modelling / interpretation for jobs with LWD propagation resistivity**

**Real-time (always)**





# SPONSORS



**Seismic Attributes, Simplified.**

Most attribute workflows are backwards, forcing you to endure timely computations, loading procedures and parameter adjustments before seeing actual results. This makes it hard to effectively narrow down the key attributes for your prospects.

Resolve GeoSciences eliminates that problem by allowing you to immediately scan through a variety of properly conditioned, ready-to-view attributes, with color palettes and ranges set specifically for your project. The key is our powerful attribute analysis software, SeisShow, which is delivered complimentary with our services.

Contact us to find out more about SeisShow and our services:  
**Seismic Attributes | HQ Frequency Enhancement | Spectral Decomposition**

www.resolvegeo.com  
 info@resolvegeo.com  
 713-972-6200

**Resolve**  
 GeoSciences, Inc.

**Serving Corpus Christi for over 20 years**



501 S. Tanchua St.  
 Corpus Christi, TX 78401

- We process 1<sup>st</sup> class mail with a direct discount to you
- No meter procedure change except for the amount you meter your envelopes

**CALL 888-4332 for details - Ask for Anne**



**LMP PETROLEUM, INC.**

*EXPLORING SOUTH TEXAS*

615 N. Upper Broadway  
 Suite 1770  
 Wells Fargo Bank Building  
 Corpus Christi, Texas 78401-0773

361-883-0923  
 Fax: 361-883-7102  
 E-mail: geology@lmpexploration.com

## GCAGS Convention returns to Houston in September 2015 Call for Presentation and Posters ends December 13 2014

By Linda Sternbach , Technical Chair

Contact: [linda.sternbach@gmail.com](mailto:linda.sternbach@gmail.com) 281-679-7333

The Houston Geological Society will host the 65<sup>th</sup> Gulf Coast Association of Geological Societies (GCAGS) at the George R. Brown Convention Center, September 19-22, 2015. The Gulf Coast Section of SEPM (GCSSEPM) plans to co-host the GCAGS 2015 convention. GCSSEPM will be organizing oral talks, posters, judging and the SEPM awards program.

The Houston 2015 GCAGS convention is opening up a “Call for Papers” and inviting geoscientists to submit a short 250 word abstract with title and authors by December 13, 2014. Submit a short word document (250 words) to Technical Program chair Linda Sternbach at [linda.sternbach@gmail.com](mailto:linda.sternbach@gmail.com), or check the convention web page and blog, hosted by GCAGS Secretary Dianna Phu at [www.gcagshouston.com](http://www.gcagshouston.com).

The session themes are: New Oil and Gas Discoveries, Un-Conventional Plays, Development Field Studies, GOM Shelf and Onshore Plays , Salt Tectonics and Traps , Mexico and Caribbean Plays, Geophysical Technology , Gulf of Mexico Deepwater , Environmental Geology, Coastal Geology and Surface Impact ,Geology-Geophysics-Engineering , Business Portfolio Management, Climate/ Public Awareness Issues.

The 65<sup>th</sup> Annual GCAGS convention will feature Gulf Coast area oil, gas, and environmental topics, with the intent that Gulf Coast geoscientists will expand their technical training, knowledge and networking during the convention. The General Chair of the convention is Larry Bartell (Legends Exploration, email [ldbartell@legendsexpl.com](mailto:ldbartell@legendsexpl.com)). GCAGS President for the 2015 convention is Charles Sternbach (Star Creek Energy, [carbodude@gmail.com](mailto:carbodude@gmail.com)). GCAGS Non-Technical Chair is Deborah Sacrey, HGS President -Elect. The Technical Program is coordinated by Linda Sternbach (Star Creek Energy) and Paul Basinski (Burgundy Exploration- email [pbasinski@comcast.com](mailto:pbasinski@comcast.com)). Dianna Phu ([dianna@exabyte.org](mailto:dianna@exabyte.org)) is both Secretary for the convention and publicity, website and social media chair. Mike Erpenbeck is convention Treasurer.

The convention is proud to have the following hard working volunteers: Short Courses (Robert Pledger ([rpledger@hotmail.com](mailto:rpledger@hotmail.com)), Field Trips co -chairs Dr Julia Wellner ,University of Houston, email [jwellner@uh.edu](mailto:jwellner@uh.edu) , and Dr. Robert Wellner – [robert.w.wellner@exxonmobil.com](mailto:robert.w.wellner@exxonmobil.com).

Poster Sessions will be coordinated by Meredith Faber (Swift Energy- email [meredith.faber@swiftenergy.com](mailto:meredith.faber@swiftenergy.com)). Judging Co Chairs are Sandy Rushworth and David Risch ([sandyrushw@aol.com](mailto:sandyrushw@aol.com), and [davidlrish@aol.com](mailto:davidlrish@aol.com)). If you have ideas on Short Courses and Field Trips or want more information on participating, contact Robert Pledger and Julia Wellner.

The convention will start on Saturday, September 19, 2015. The opening weekend will have one and two day field trips leaving from the George R. Brown convention center. These will be open to professionals and university students. There will also be one and two day short courses on the weekend of Sept 19-20 2015. The technical program is anticipating 100 or more talks in concurrent sessions. The talks and poster sessions will occupy two full days on the third level of the George R Brown convention center September 21-22 , 2015 (Monday and Tuesday). Check the convention website [www.gcagshouston.com](http://www.gcagshouston.com) for more information on contacting all the volunteers and log on to the latest

news as the convention planning continues from now till mid- 2015. Convention registration will open in August 2015.

There are other projects initiated by GCAGS that deserve mention. There will be a GCAGS Transactions Publication of all the talks and posters at the 2015 convention. This editor of the 2015 Transactions is past HGS President, Steve Levine (email: [stephenlevine@sk.com](mailto:stephenlevine@sk.com)).

In addition, GCAGS has a peer-reviewed technical journal called GCAGS Journal that publishes full length geosciences papers each year in hard copy and online as pdfs. The 2015 GCAGS Journal Editor is HGS Past -President and former HGS Bulletin Editor, Barry Katz. Geoscientists will need to submit a 600 word abstract detailing their proposed Journal paper by December 2, 2014 to be included in the 2015 GCAGS Journal. Contact Barry Katz at [barrykatz@chevron.com](mailto:barrykatz@chevron.com) for more information. GCSSEPM editor will be Patricia Santogrossi, past HGS Bulletin editor.



**CALL FOR PAPERS**  
**65<sup>th</sup> GCAGS Convention**  
**September 19-22, 2015 •**  
**George R. Brown center**  
**Houston, Texas**



New Oil and Gas Discoveries  
Un-Conventional Plays  
Development Field Studies  
GOM Shelf and Onshore Plays  
Salt Tectonics and Traps  
Mexico and Caribbean Plays  
Geophysical Technology  
Gulf of Mexico Deepwater  
Environmental Geology  
Coastal Geology and Surface Impact  
Geology-Geophysics-Engineering  
Portfolio Management  
Climate/ Public Awareness Issues

**To participate in the 2015 GCAGS Convention**  
**Oral and Poster presentations**

An abstract of up to 250 words should be submitted no later than **December 13, 2014** to Technical Program Chair, Linda Sternbach ([linda.sternbach@gmail.com](mailto:linda.sternbach@gmail.com)).

After notification of acceptance on **January 20, 2015**, authors submit extended abstracts (1-2 pages) or full papers up to 12 pages to the GCAGS Transactions by **February 20, 2015** to GCAGS Transactions Editor, Steve Levine.

Full instructions for manuscript submissions will be posted online at [www.gcags2015.com](http://www.gcags2015.com).

---

**Publish your work in the upcoming GCAGS Journal !!**  
**(a new peer-reviewed journal of Gulf Coast Geoscience).**

Instructions: An extended abstract of at least 600 words, including 1–2 representative figures, Should be submitted by December 2, 2014 to Journal Editor, Barry Katz ([BarryKatz@chevron.com](mailto:BarryKatz@chevron.com)).

After acceptance, a full manuscript must be submitted by March 24, 2015.

Full instructions for manuscript submissions will be posted online at [www.gcags2015.com](http://www.gcags2015.com).

## SPONSORS



Since 1905

### Royal Exploration Company, Inc.

Bank of America  
500 N. Shoreline Blvd. Suite 807 N  
Corpus Christi, Texas 78471-1008

Alan Costello - Geologist   Robert Rice - Geologist  
Matt Hammer - Exploration Manager

Telephone: 361-888-4792   Fax: 361-888-8190



### EOG Resources Performance You Can Count On

#### ■ The Dynamics of Performance

As EOG adds new plays to its portfolio, the company relies on the proven performance of its operations in the United States, Canada, Trinidad, the United Kingdom and China.

#### ■ The Technology of Performance

Explorationists fuel EOG's penchant for "growth through the drillbit" by generating exciting new drilling opportunities.

#### ■ The Consistency of Performance

EOG continues to focus on a long-term strategy that emphasizes financial returns, a strong balance sheet and organic production growth.

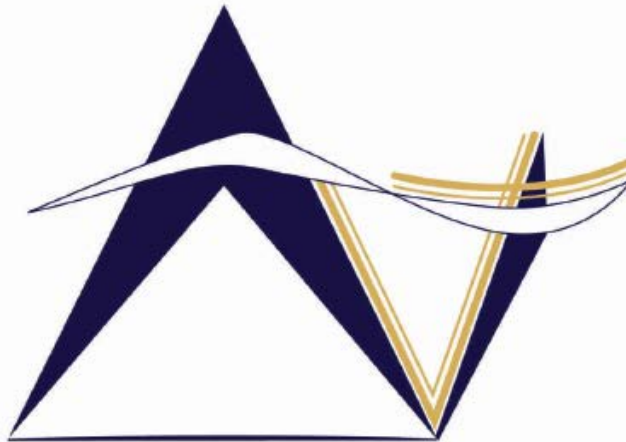


EOG Resources, Inc.  
Corpus Christi

539 N. Carancahua, Suite 900  
Corpus Christi, TX 78401

(361) 883-9231  
[www.eogresources.com](http://www.eogresources.com)

**SPONSORS**



**VirTex Operating Company, Inc.**

*615 North Upper Broadway, Suite 525, Corpus Christi, Texas 78477  
(361) 882-3046*

**SEI**®

*Seismic Exchange, Inc.*

**Strategic Speculative Surveys**  
Geophysical Data Marketing & Management

**YOUR**  
Full Service  
National  
Seismic Data  
Marketing Firm

Corpus Marketing Contact:  
Beau Patrick

Corpus Office  
361.884.2936

CORPUS CHRISTI DALLAS DENVER HOUSTON NEW ORLEANS TULSA

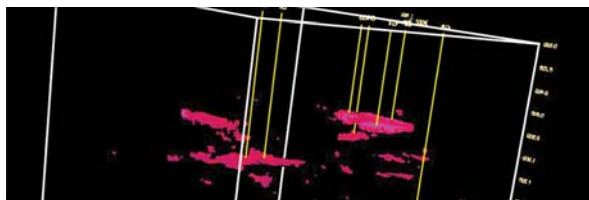
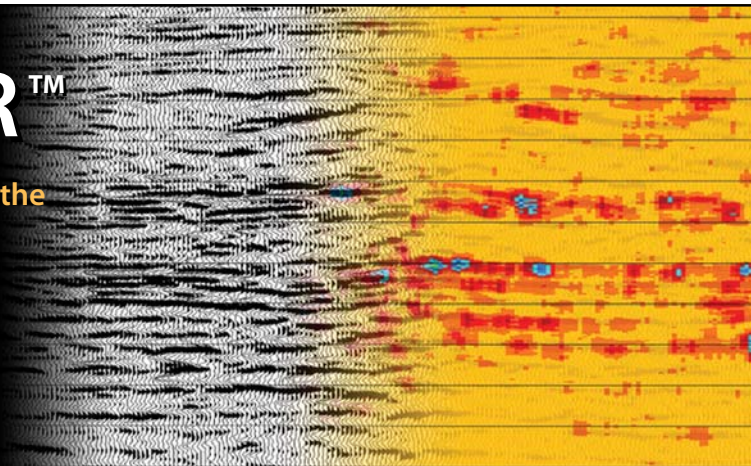
11050 Capital Park Dr., Houston, Texas 77041 832.590.5100

[www.seismicexchange.com](http://www.seismicexchange.com)

# DRILL SMARTER™

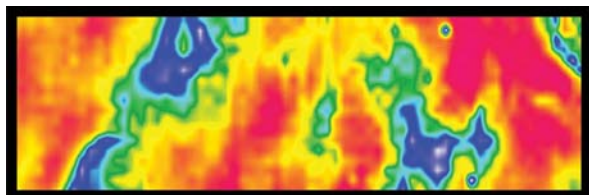
Proprietary Post-Stack Technologies to Aid in the Analysis of Seismic Data and Identification of Direct Hydrocarbon Indicators

Reduce risk • Increase exploration success  
Stay ahead of the competition • Improve your ROI



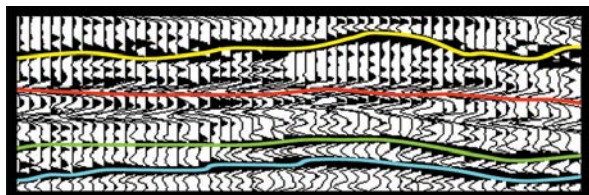
## EnergyAbsorption<sup>SM</sup>

Measures high frequency absorption indicating the location of increased porosity and potential gas accumulations



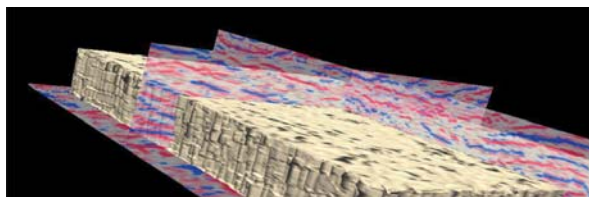
## SpecView<sup>SM</sup>

Spectral Decomposition identifying hidden stratigraphic information and subtle anomalies within a specific horizon



## HiRes<sup>SM</sup>

Recovers detail lost in the standard seismic response



## SemCube<sup>SM</sup>

Measures a semblance response indicating faulting, fracturing and other anomalous areas

# SeismicVentures<sup>®</sup>

For more information, contact Sara Davis at [s\\_davis@seismicventures.com](mailto:s_davis@seismicventures.com) or (281) 240-1234 x206

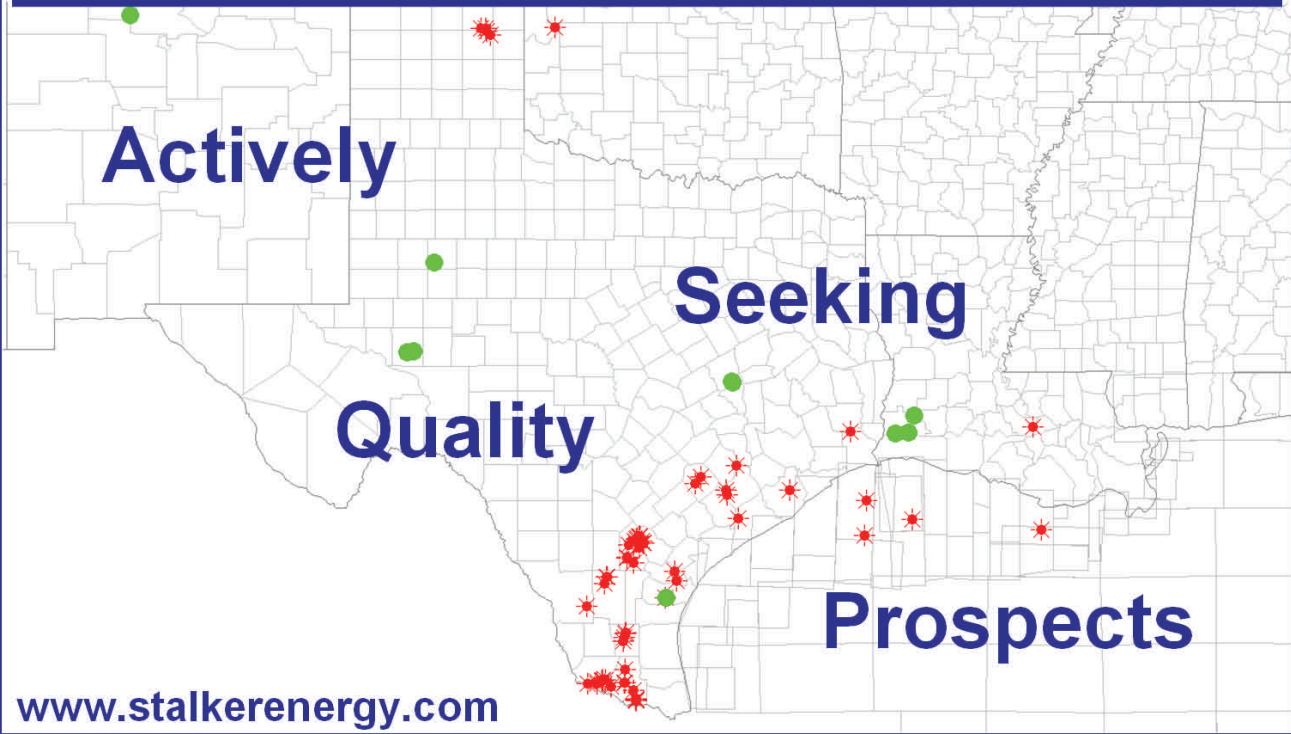
Seismic Ventures, Inc. • 12603 Southwest Freeway, Suite 600 • Stafford, Texas 77477  
t: 281-240-1234 • f: 281-240-4997 • [www.seismicventures.com](http://www.seismicventures.com)

**SPONSORS**

**Austin Office:**  
 1717 W. 6th Street, Ste 230  
 Austin, Texas 78703  
 512.457.8711  
 Contact: Bill Walker, Jr.  
 bwalker@stalkerenergy.com



**Houston Office:**  
 2001 Kirby Drive, Suite 950  
 Houston, Texas 77019  
 713.522.2733  
 Contact: Todd Sinex  
 tsinex@stalkerenergy.com



**AS GOOD AS OUR WORD  
 TAP INTO OUR RESERVOIR**



[www.dawson3d.com](http://www.dawson3d.com)  
 509 W Wall, Suite 800  
 Midland, Texas 79701  
 432-684-3000  
**800-D-DAWSON**  
 Houston, Texas 713-917-6772  
 Denver, Colorado 303-723-0440  
 Oklahoma City, Oklahoma 405-848-7512  
 Michigan 248-446-9533

**EXPERIENCE** For over a half-century Dawson has helped its clients succeed. In both seismic acquisition and processing, we deliver high quality data that gets clear-cut results. From field equipment to software, we put the latest technologies into the hands of seasoned professionals who have geophysical knowledge specific to all major U.S. basins. Decades of acquiring data and imaging objectives to provide total subsurface picture. That's what our experience gives you.




Planning • Design • Acquisition • Processing • Results



## SPONSORS

**WELLSITE GEOSCIENCE SERVICES**




**When time is money,  
Wellsite Geoscience is  
money well spent.**

Whether you're exploring a basin, producing a well or completing a shale play, time is money. That's why Weatherford Laboratories brings a suite of formation evaluation technologies right to the wellsite. Utilizing mud gas and cuttings, these technologies provide detailed data on gas composition, organic richness, mineralogy and chemostratigraphy in near real time. As a result, operators now have an invaluable tool to assist with sweet spot identification, wellbore positioning, completion design and hydraulic fracturing. We call it Science At the Wellsite. You'll call it money well spent.

**SCIENCE AT THE WELLSITE™**  
[www.weatherfordlabs.com](http://www.weatherfordlabs.com)

**Formation Evaluation | Well Construction | Completion | Production**  
©2011 Weatherford. All rights reserved.



## ***CHARGER EXPLORATION***

**Michael L. Jones  
President/Geologist**

**Onshore Gulf Coast Prospect Generation and Consulting  
Texas – Louisiana – Mississippi**

**1001 McKinney Street, Suite 801, Houston, Texas 77002  
Office: 713.654.0080      Mobile: 713.398.3091  
Email: [mjones@chargerexploration.com](mailto:mjones@chargerexploration.com)  
[www.chargerexploration.com](http://www.chargerexploration.com)**

# GEO LINK POST

<http://www.lib.utexas.edu/books/landsapes/index.php> Free service. Rare, fragile, hard-to-find, public domain documents covering various topics about the landscape of Texas. Includes the Texas Geological Survey from 1887 until 1894.

**USGS TAPESTRY OF TIME AND TERRAIN** <http://tapestry.usgs.gov> The CCGS is donating to all of the 5th and 6th grade schools in the Coastal Bend. Check it out--it is a spectacular map. You might want to frame one for your own office. The one in my office has glass and a metal frame, and It cost \$400 and it does not look as good as the ones we are giving to the schools.

**FREE TEXAS TOPOS'S** <http://www.tnris.state.tx.us/digital.htm> these are TIFF files from your state government that can be downloaded and printed. You can ad them to SMT by converting them first in Globalmapper. Other digital data as well.

**FREE NATIONAL TOPO'S** [http://store.usgs.gov/b2c\\_usgs/b2c/start/\(xcm=r3standardpitrex\\_prd\)/.do](http://store.usgs.gov/b2c_usgs/b2c/start/(xcm=r3standardpitrex_prd)/.do) go to this webpage and look on the extreme right side to the box titled TOPO MAPS DOWNLOAD TOPO MAPS FREE.

<http://www.geographynetwork.com/> Go here and try their top 5 map services. My favorite is 'USGS Elevation Date.' Zoom in on your favorite places and see great shaded relief images. One of my favorites is the Great Sand Dunes National Park in south central Colorado. Nice Dunes.

<http://antwrp.gsfc.nasa.gov/apod/asropix.html> Astronomy picture of the day--awesome. I click this page everyday.

<http://www.spacimaging.com/gallery/ioweek/iow.htm> Amazing satellite images. Check out the gallery.

<http://www.ngdc.noaa.gov/seg/topo/globegal.shtml> More great maps to share with kids and students.

[www.ccgeo.org](http://www.ccgeo.org) Don't forget we have our own we page.

<http://terra.nasa.gov/gallery/> Great satellite images of Earth.

[www.ermaper.com](http://www.ermaper.com) They have a great free downloadable viewer for TIFF and other graphic files called ER Viewer.

<http://terrasrver.com> Go here to download free aerial photo images that can be plotted under your digital land and well data. Images down to 1 meter resolution, searchable by Lat Long coordinate. Useful for resolving well location questions.

**TYPE LOGS OF SOUTH TEXAS FIELDS by Corpus Christi Geological Society**

**NEW (2009-2010)TYPE LOGS IN RED; \*\*\*\*\*2011;**

**lost now found**

**ARANSAS COUNTY**

Aransas Pass/McCampbell Deep  
Bartell Pass  
Blackjack  
Burgentine Lake  
Copano Bay, South  
Estes Cove  
Fulton Beach  
Goose Island  
Half Moon Reef  
Nine Mile Point  
Rockport, West  
St. Charles  
Tally Island  
Tract 831-G.O.M. (offshore)  
Virginia

**BEE COUNTY**

Caesar  
Mosca  
Nomanna  
Orangedale(2)  
Ray-Wilcox  
San Domingo

**Tulsita Wilcox**

Strauch\_Wilcox

**BROOKS COUNTY**

Ann Mag  
Boedecker  
Cage Ranch  
Encintas  
ERF  
Gyp Hill

**Gyp Hill West**

Loma Blanca

Mariposa

Mills Bennett

Pita

Tio Ayola

Tres Encinos

**CALHOUN COUNTY**

Appling  
Coloma Creek, North  
Heyser  
Lavaca Bay  
Long Mott  
Magnolia Beach  
Mosquito Point  
Olivia  
Panther Reef  
Powderhorn  
Seadrift, N.W.  
Steamboat Pass  
Webb Point

S.E. Zoller

**CAMERON COUNTY**

Holly Beach  
Luttes  
San Martin (2)  
Three Islands, East

Vista Del Mar

**COLORADO COUNTY**

E. Ramsey  
**Graceland N. Fault Bik**  
**Graceland S. Fault Bik**

**DEWITT COUNTY**

**Anna Barre**  
Cook  
**\*\*\*\*\*Nordheim**  
Smith Creek  
Warmsey

Yorktown, South

**DUVAL COUNTY**

DCR-49  
Four Seasons  
Good Friday  
Hagist Ranch  
Herbst  
Loma Novia  
Petrox

Seven Sisters

Seventy Six, South

Starr Bright, West

**GOLIAD COUNTY**

Berclair  
North Blanca  
Bombs  
Boyce  
Cabeza Creek, South  
Goliad, West

**St Armo**

Terrell Point

**HIDALGO COUNTY**

Alamo/Donna  
Donna  
Edinburg, West  
Flores-Jeffress

**Foy**

**Hidalgo**

LA Blanca

McAllen& Pharr

McAllen Ranch

Mercedes

Monte Christo, North

Penitas

San Fordyce

San Carlos

San Salvador

S. Santallana

Shary

Tabasco

Weslaco, North

Weslaco, South

**JACKSON COUNTY**

Carancahua Creek  
Francitas  
Ganado & Ganado Deep  
LaWard, North  
Little Kentucky

Maurbro

StewartSwan Lake

Swan Lake, East

Texana, North

West Ranch

**JIM HOGG COUNTY**

Chaparosa  
Thompsonville,N.E.

**JIM WELLS COUNTY**

Freebom  
Hoelsher  
Palito Blanco

Wade City

**KARNES COUNTY**

Burnell

Coy City

Person

Runge

**KENEDY COUNTY**

Candelaria

Julian

Julian, North

Laguna Madre

Rita

Stillman

**KLEBERG COUNTY**

Alazan

Alazan, North

Big Caesar

Borregos

Chevron (offshore)

Laguna Larga

Seeligson

Sprint (offshore)

**LA SALLE COUNTY**

**\*\*\*Pearsall**

**LAVACA COUNTY**

Hallettsville

Hope

Southwest Speaks

**Southwest Speaks Deep**

**LIVE OAK COUNTY**

Atkinson

Braslau

Chapa

Clayton

Dunn

Harris

Houdman

Kittie West-Salt Creek

Lucille

Sierra Vista

Tom Lyne

White Creek

White Creek, East

**MATAGORDA COUNTY**

Collegeport

**MCMULLEN COUNTY**

Arnold-Weldon

Brazil

Devil's Waterhole

Hostetter

Hostetter, North

**NUECES COUNTY**

Agua Dulce (3)

Arnold-David

Arnold-David, North

Baldwin Deep

Calallen

Chapman Ranch

Corpus Christi, N.W.

Corpus Christi West C.C.

Encinal Channel

Flour Bluff/Flour Bluff, East

GOM St 9045(offshore)

Indian Point

Mustang Island

Mustang Island, West

Mustang Island St.

889S(offshore)

Nueces Bay/Nueces Bay

West

**Perro Rojo**

Pita Island

Ramada

Redfish Bay

Riverside

Riverside, South

Saxet

Shield

Stedman Island

Turkey Creek

**REFUGIO COUNTY**

Bonnieview/Packery Flats

Greta

La Rosa

Lake Pasture

Refugio, New

Tom O'Connor

**SAN PATRICIO COUNTY**

**Angelita East**

Commonwealth

Encino

Enos Cooper

Geronimo

Harvey

Hiberia

Hodges

Mathis, East

McC Campbell Deep/Aransas Pass

Midway

Midway, North

Odem

Plymouth

Portilla (2)

Taft

Taft, East

White Point, East

**STARR COUNTY**

El Tanque

Garcia

Hinde

La Reforma, S.W.

**Lyda**

Ricaby

Rincon

Rincon, North

Ross

San Roman

Sun

Yturria

**VICTORIA COUNTY**

Helen Gohike, S.W.

Keeran, North

Marcado Creek

McFaddin

Meyersville

Placedo

**WEBB COUNTY**

Aquilares/Glen Martin

Big Cowboy

Bruni, S.E.

Cabezon

Carr Lobo

Davis

Hirsch

Juanita

Las Tiendas

Nicholson

O'Hem

Olmitos

Tom Walsh

**WHARTON COUNTY**

Black Owl

**WILLACY COUNTY**

**Chile Vieja**

La Sal Vieja

Paso Real

Tenerias

Willamar

**ZAPATA COUNTY**

Benavides

Davis, South

Jennings/Jennings, West

Lopeno

M&F

Pok-A-Dot

**ZAVALA COUNTY**

El Bano

Call Coastal Bend Geological Library, Maxine: 361-883-2736  
1 log -- \$10 each, 5-10 logs \$9 each and 10 + logs \$8.00 each – plus postage

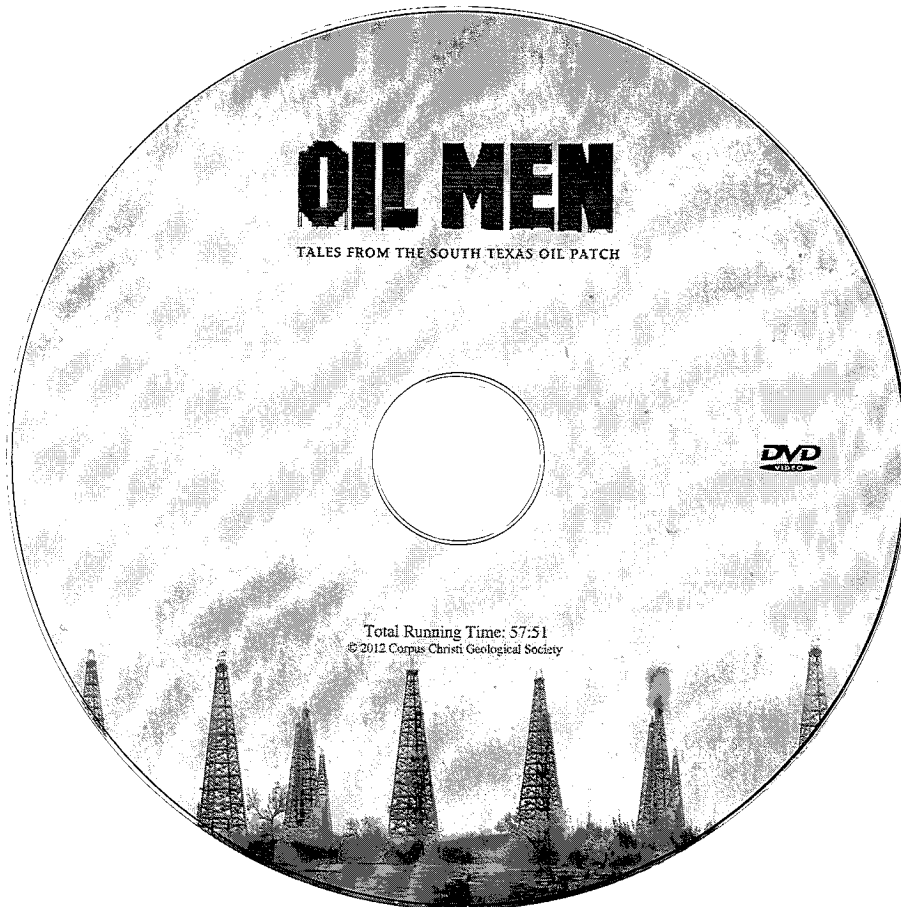
# OIL MEN

TALES FROM THE SOUTH TEXAS OIL PATCH

DVD

MEMBER PRICE \$25

NONMEMBER \$30

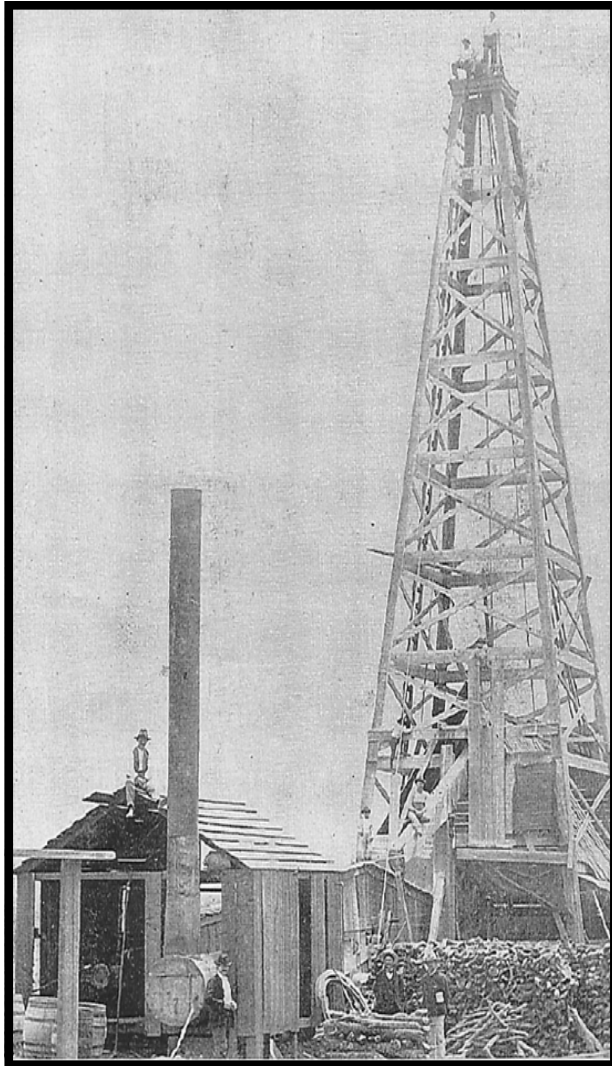


To Order DVD

Sebastian Wiedmann

[swiedmann@braytoncc.com](mailto:swiedmann@braytoncc.com)

If mailed add \$5



Corpus Christi Geological Society  
C/O Javelina Press  
P. O. Box 60181  
Corpus Christi, TX 78466

Order Form

Mail order form for Wooden rigs-Iron Men. The price is \$75 per copy, which includes sales tax, handling, and postage

Name \_\_\_\_\_

Address \_\_\_\_\_

City, State, Zip \_\_\_\_\_

No. of books \_\_\_\_\_ Amount enclosed \_\_\_\_\_

Send to Corpus Christi Geological Society Book Orders

P. O. Box 60181

Corpus Christi, TX. 78466 Tax exempt# if applicable \_\_\_\_\_

**Wooden Rigs—Iron Men**

The Story of Oil & Gas in South  
Texas

By Bill & Marjorie K. Walraven

Published by the  
Corpus Christi Geological Society



4201 FM 1960 West, Ste. 245  
Houston, TX 77068  
Office: 832-249-1000  
Fax: 832-249-1007  
Cell: 713-412-9133

8610 N. New Braunfels, Ste. 517  
San Antonio, TX 78217  
Office: 210-826-2553  
Fax: 210-826-2570

520 Starr St.  
Corpus Christi, TX 78401  
Office: 361-888-8288  
Fax: 361-888-4617  
Cell: 361-816-6936

**Randy Acock, P.E.**  
President  
randy@aeaicc.com  
www.aeaicc.com

david becker

*David Becker*  
exploration  
geologist

geologist

o: (361) 884-3613  
f: (888) 869-2011

600 leopard st. ste 706  
corpus christi, tx 78473

dkbecker1137@sbcglobal.net

## Bergsma Consulting

**Michael Bergsma**  
Geophysicist

Office: 615 Leopard, Suite 430  
Corpus Christi, Texas 78476  
Mailing: P.O. Box 955  
Corpus Christi, Texas 78403

Cell: 361.537.6964  
Home: 361.855.4515  
Fax: 1.877.496.0316  
e-mail: bergsmaconsulting@davlin.net



**Bier Seis, Inc.**  
Geophysical Consulting

David Biersner, President  
19446 Arrowood Place  
Garden Ridge, Tx 78266  
Cell: 281.744.7457  
E-Mail: bierseis@yahoo.com

Field Quality Control  
Program Management  
Permit Management  
Seismic Line Clearing  
Supervision



**Dawn S. Bissell**  
Geoscientist

**Advent Geoscience Consulting, LLC**

Phone: 361-960-2151  
Fax: 961-854-2604  
Email: bissells@swbell.net

253 Circle Drive  
Corpus Christi, TX 78411  
Home: 361-854-2635

MUD LOGGING SERVICE



Since 1961

**MIKE BULLARD**

(361) 221-9717 Office  
(361) 522-1245 Cell  
E-Mail md\_bullard@sbcglobal.net

(361) 211-9715 Fax  
P.O. Box 1011  
Kingsville, Tx 78363

**HYDROCARBON OPERATING, INC**  
**HYDROCARBON HORIZONS, INC.**  
600 Leopard St., Suite 1724  
Corpus Christi, Texas 78473

*Brian S. Calhoun*

Office 361-887-6655 Fax 361-887-6341  
Cell 361-877-7557  
Email: BCalhoun\_HOI@sbcglobal.net

**James L. Claughton**  
CONSULTING GEOLOGIST

Office | 361-887-2991  
Fax | 361-883-4790  
Cell | 361-960-2014  
clausoie@sbcglobal.net

615 North Upper Broadway  
Suite 1935  
Corpus Christi, Texas  
78401-0779

**TEXAS LONE STAR**  
**PETROLEUM CORPORATION**



**JEFF COBBS**  
President - Geologist

615 Leopard St., Suite 336  
Corpus Christi, Texas 78401-0610  
jc@tlspc.com

Office (361) 883-2911  
Cell (361) 960-0530

**Jim Collins**  
Geoscientist



361.537.4034  
jim@gulfcoastgas.com



SV Energy Company, LLC  
Conventional Thinking. Unconventional Results.

Frank G. Cornish  
Consulting Geologist  
615 N. Upper Broadway, Suite 1770  
Corpus Christi, TX 78401  
frank.cornish@gmail.com

361-883-0923 (o)  
1-800-510-5810 (f)  
361-563-9184 (m)

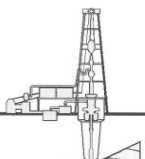


**Croft Exploration**

**Wayne S. Croft**  
Geologist  
SIPES #2318

5021 Graford Place • Corpus Christi, Texas 78413  
(361) 991-7450 Fax (361) 991-5790

**TOM DAVIDSON**  
GEOLOGIST



28550 IH-10 WEST SUITE #4  
BOERNE, TEXAS 78006

BUS: (210) 844-8963  
RES: (830) 981-5883  
FAX: (830) 981-5567  
CEL: (210) 844-8963

E-MAIL  
tomgeo@gvtc.com

ONE APEX ENERGY, INC.

**CHRISTIAN DOHSE**  
Consulting Geologist

(361) 877-3431  
CHRISTIAN.DOHSE@GMAIL.COM  
CORPUS CHRISTI, TX



**Tommy Dubois**  
Geologist

2627 CR 312  
Yoakum, Texas 77995

361-215-0223

tvdubois@yahoo.com

**Fields Exploration, Inc.**

545 N. Upper Broadway, Suite 1100 East  
Corpus Christi, Texas 78476

**Bruce W. Fields, President**  
**Byron W. Fields, Vice President** 361-883-4721  
**Craig B. Fields, Vice President** 361-883-4715 Fax



**VENTEX**  
Oil & Gas, Inc.

Email mfraney@usawide.net

**MATTHEW FRANEY**  
Geologist

600 Leopard  
Suite 904  
Corpus Christi, Texas 78473

Phone (361) 888-6327  
FAX (361) 882-8820

**GISLER BROTHERS LOGGING CO., INC.**

P.O. BOX 485  
106 E. MAIN

RUNGE, TX 78151



**Wes Gisler**  
Bus. (830) 239-4651  
Mobile (361) 676-1369

Home (830) 239-4914  
Direct (830) 239-4693  
wes@gislerbrotherslogging.com

**Robert Graham**  
President  
grexploration@gmail.com

Phone 361-882-7681  
Fax 361-882-7685  
Cell 361-774-3635

**GrX Inc.**

Exploratory Prospects & Production Development

Mail: P. O. Box 1843  
Corpus Christi, Texas  
78403-1843

Office: 606 N. Carancahua, Ste. 610  
Corpus Christi, Texas  
78401-0634



**RAY GOVETT, Ph. D.**  
CONSULTING GEOLOGIST  
361-855-0134

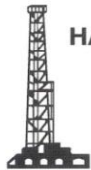
**EPL**

OIL & GAS, INC.

**Kathy Hardy**  
Lead Asset Geoscientist

**EPL Oil & Gas, Inc.**  
919 Milam  
Suite 1600  
Houston, TX 77002  
www.eplweb.com

Direct: (713) 815-3292  
Cell: (832) 236-7442  
Fax: (713) 815-3391  
khardy@eplweb.com



### HART EXPLORATION, LLC.

**RICK HART**  
Geologist / Owner

P.O. Box 729  
Coldspring, Texas 77331  
Cell: 512-626-3053  
Email: hartexploration@aol.com

### RIVIERA EXPLORATION, LLC

**H. TONY HAUGLUM**  
President

600 LEOPARD ST.  
SUITE 1704  
CORPUS CHRISTI  
TEXAS 78401  
PHONE 361.884.1811  
FAX 361.884.8071  
E-MAIL THAUGLUM@SWBELL.NET

**GEORGE H. HOBBS**  
Drilling and Completion Supervision  
AFE and Well Design Preparation

P.O. Box 1711  
San Benito, Texas 78586

Home (956) 399-9718  
Mobile (956) 605-4563  
george\_hobbs@msn.com



### SUEMAUR EXPLORATION & PRODUCTION, LLC

FROST BANK PLAZA  
802 N. CARANCAHUA, SUITE 1000  
CORPUS CHRISTI, TEXAS 78401-0015

**BRENT F. HOPKINS**  
PRESIDENT AND CEO  
GEOLOGIST  
OFFICE: (361) 884-8824  
FAX: (361) 884-9623  
RES: (361) 643-8373  
CELL: (361) 215-4855  
Email: brenth@suemaur.com



**Louis R. Lambiotte**  
Geologist

**LMP Petroleum, Inc.**  
615 N. Upper Broadway, Suite 1770  
Corpus Christi, TX 78477  
Tel: (361) 883-0923  
Fax: (361) 883-7102  
E-mail: geology@LMPexploration.com



### REVEILLE OIL & GAS

**Allen Lassiter, Geologist**

711 N. Carancahua St., #906  
Corpus Christi, TX 78401  
alassiter@reveilleoilandgas.com

O: 361-884-6886  
F: 361-884-9102  
C: 361-960-5106

**James R. Jones**  
Geologist

7434 Long S Drive  
Corpus Christi, TX 78414  
361-779-0537  
jrjones5426@aol.com

### CHARGER EXPLORATION

**MICHAEL L. JONES**  
PRESIDENT/GEOLOGIST

1001 MCKINNEY STREET  
STE. 801  
HOUSTON, TX 77002

MAIN (713) 654-0080  
FAX (713) 654-0086  
CELL (713) 398-3091

mjones@chargerexploration.com  
www.chargerexploration.com



**Vicki Marlett**  
Sr. Account Manager

972-690-1122 x132  
Fax: 972-690-1163  
Cell: 214-557-0815  
e-mail: vmarlett@geotrace.com  
2435 N. Central Expressway, Suite 1100  
Richardson, Texas 75080  
www.geotrace.com

**CURTIS R. MAYO**  
GEOLOGICAL CONSULTANT

Reserve Analysis Prospect Evaluation  
Expert Witness Prospect Generation

Fredericksburg, Texas 78624

Office: 830.992.2938 Cell: 830.765.0628 E-Mail: cmayo@crecsc.net

**Dennis O. Moore**  
Formation Evaluation  
Wireline Systems - Southern Area



800 N. Shoreline Blvd., Suite 700 N. Tower  
Corpus Christi, Texas 78401-3771  
Office: 361-883-1561  
Fax: 361-883-4390  
Cell: 361-816-5144  
Email: dennis.moore@bakerhughes.com

www.bakerhughes.com



**J. Mark Miller**  
President

Phone (361) 883-7700  
Fax (361) 883-7701  
mark@millersmithgas.com  
545 N. Upper Broadway  
Suite 400  
Corpus Christi, Texas 78476

Wellhead Gas Marketing

Mailing Address  
615 Leopard, Ste. 640  
Corpus Christi, Texas 78401-0641  
361.882.7888 phone  
361.882.7889 fax  
361.946.2581 mobile

Contact Address  
1701 Southwest Parkway, Ste. 109  
College Station, Texas 77840  
866.946.2581 phone  
866.946.2580 fax

pmueller@muelexp.com  
www.muelexp.com



**J. Paul Mueller, Jr.**  
President



### NEU OIL & GAS, L.L.C.

**Daniel J. Neuberger**  
Geologist and President

Austin Office:  
712 Windsong Trail  
West Lake Hills, Texas 78746

Office (361) 548-7723  
Home (512) 306-1223  
dan@neuoilandgas.com

Patrick Nye  
President  
patrick@nyexp.us

Office: (361) 452-1455  
Cell: (361) 658-1089  
Res: (361) 258-2146

### NYE

Exploration & Production, LLC

802 N. Carancahua, Suite 1840  
Frost Bank Plaza  
Corpus Christi, TX 78401  
www.nyexp.us



### SAXET PETROLEUM INC.

**BRIAN E. O'BRIEN**

Main: 713-783-4883  
Fax: 713-783-3039  
Res: 713-784-7911  
Cell: 713-899-5164  
E-mail: bobrien@saxetpetroleum.com

510 Bering Drive  
Suite 600  
Houston, Texas 77057



### Herradura Petroleum, Inc.

**JEFF OSBORN**  
Geologist

711 N. Carancahua, Ste. 1750  
Corpus Christi, Texas 78475  
e-mail: jeff@herradurapetroleum.com

Office: 361-884-6886  
Fax: 361-884-9102  
Cell: 361-537-2349

### SWIFT ENERGY COMPANY



**RICHARD M. PARKER P.G.**  
Manager / Geological Operations  
TBPG License # 6056

(281) 874-2585  
Mobile # 1 (713) 724-4380  
Mobile # 2 (713) 206-3158  
Home: (281) 412-0745  
16825 NORTHCHASE DR., SUITE 400  
HOUSTON, TEXAS 77060 E-mail: richard.parker@swiftenergy.com



3 Riverway, Suite 650  
Houston, Texas 77056

office: 713-333-9200  
cell: 832-418-3409  
mprzywara@qstarllc.com

**Mark S. Przywara**  
Vice President - Geosciences



**Beth Priday**  
Senior Geologist

615 North Upper Broadway  
Suite 525, WF168  
Corpus Christi, Texas 78477  
Bus (361) 882-3046  
Fax (361) 882-7427

Mobile: (361)443-5593 • E-mail: bpriday@virtexoperating.com



**EOG Resources, Inc.**  
19100 Ridgeway Pkwy  
Building 2  
San Antonio, TX 78259-1828  
Direct: (210) 403-7852

**Sara Reilly**  
Geologist

P. O. Box 592929  
San Antonio, TX 78259-0196  
Fax: (210) 403-7853  
sara\_reilly@egresources.com

## First Rock, Inc.

RGR Production

First Rock I, LLC

Gregg Robertson

Main Office:  
600 Leopard, Suite 1800  
Corpus Christi, TX 78401  
361-884-0791

Field Office:  
5574 FM 1344  
Floresville, TX 78114  
830-484-1122



### Wireline Services

Weatherford International Ltd.  
401 E. Sonterra Blvd., Suite 175  
San Antonio, Texas 78258  
USA

**Sam Roach**  
US Gulf Coast Wireline Sales

+1.210.930.7588 Direct  
+1.210.930.7610 Fax  
+1.210.241.2463 Mobile

sam.roach@weatherford.com  
www.weatherford.com



Douglas Sartoris  
exploration geologist

DSX energy limited, LLP  
One Shoreline Plaza, 800 North Shoreline Blvd.  
South Tower, Suite 2570, Corpus Christi, TX 78401  
bus. 361.884.1130 fax. 361.884.1171 email: dsartoris@aol.com

**TOM SELMAN**  
selmanlog.com  
tselman@selmanlog.com

Ofc. (432) 563-0084  
(800) 578-1006  
Cell (432) 288-2259



GEOLOGICAL CONSULTING / SURFACE LOGGING SERVICES

P.O. Box 61150 Midland, TX 79711 4833 Saratoga #624 Corpus Christi, TX 78413 P.O. Box 2993 Rock Springs, WY 82902

## Crossroads Exploration

**Gloria D. Sprague**  
Geologist

Timpson Building  
189 N. First Street, Suite 111  
Timpson, Texas 75975

Office: (936) 254-3600  
Fax: (936) 254-3602  
Mobile: (936) 488-9428

E-Mail: gsprague@usawide.net

**Charles A. Sternbach, Ph.D**  
President

**Star Creek Energy Company**  
Oil and Gas Exploration

800 Wilcrest Drive, Suite 230  
Houston, Texas 77042  
office: 281.679.7333  
cell: 832.567.7333  
carbodude@gmail.com



www.starcreekenergy.com

## THOMAS W. SWINBANK

CERTIFIED PETROLEUM GEOLOGIST  
PRESIDENT

STRIKE OIL & MINERALS CORP.  
P.O. Box 1339  
GEORGETOWN, TEXAS 78627

PHONE/FAX 512-863-7519  
HOME 512-863-7903  
CELL 512-876-9565

**Dennis A. Taylor**  
Vice President of Geology  
dennis@amshore.com

Off: (361) 888-4496  
Fax: (361) 888-4588  
Direct Line: (361) 844-6722  
Cell: (972) 672-9916



### AMERICAN SHORELINE, INC.

AMSHORE TEXAS WIND, LLC  
802 N. Carancahua Street, Suite 1250  
Corpus Christi, Texas 78401-0019  
www.amshore.com

Environmental

Exploration & Production

## JEANIE TIMMERMANN

GEOSCIENTIST

TX LICENSE #2289

7214 Everhart #9  
Corpus Christi, TX 78413

(361) 991-7451  
jtimmermann74@msn.com



**Davis Petroleum Corp.**

www.davispetroleumcorp.com

**Jim Travillo**  
Senior Geoscientist

1330 Post Oak Boulevard  
Suite 600  
Houston, Texas 77056

Direct: 713.439.6773  
Main: 713.626.7766  
Fax: 713.626.7775  
Cell: 713.829.9332

jtravillo@davcos.com



10001 Richmond Avenue  
Houston, TX 77042-4299  
P.O. Box 2469 (77252-2469)  
Tel: 713-689-6562  
Fax: 713-689-1089  
Mobile: 281-615-6827  
CTutt@slb.com

**Chris O. Tutt**  
Sales Representative  
NAM Sales



**WILLIAM A. WALKER, JR.**  
Certified Petroleum Geologist  
bwalker@stalkerenergy.com

1717 WEST 6<sup>th</sup> STREET, STE. 230 • AUSTIN, TX 78703  
2001 KIRBY DR., STE. 950 • HOUSTON, TX 77019

AUSTIN  
512.457.8711  
cell: 512.217.5192  
fax: 512.457.8717  
HOUSTON  
713.522.2733  
cell: 512.217.5192  
fax: 713.522.2879

## SEBASTIAN P. WIEDMANN

GEOSCIENTIST

WILSON PLAZA WEST  
606 N. CARANCAHUA, SUITE 500  
CORPUS CHRISTI, TEXAS 78401

OFFICE (361) 884-4084  
FAX (361) 882-7816  
MOBILE (361) 946-4430  
swiedmann@braytoncc.com

## JOHN C WORLEY-GEOLOGIST

Summer/Fall-  
Bozeman, MT 59718  
Winter/Spring-120 Sugar Cr  
Rockport, TX 78382  
406-388-0561 or 361-790-7900



10001 Richmond Avenue  
Houston, Texas 77042-4299  
P.O. Box 2469 (77252-2469)  
Tel: 713-689-2757  
Fax: 713-689-1089  
Mobile: 281-658-5263  
CYanez@slb.com

**Charles Yanez**  
Manager  
Shared Value Optimization



**Amir Zaman**

Vice President, Business Development

Ph: 713.278.0400  
Cell: 832.576.1368  
azaman@crescentgeo.com

2500 Wilcrest Drive, Suite 202  
Houston, Texas 77042  
www.crescentgeo.com

YOUR CARD COULD BE HERE!!!  
\$30 FOR 10 ISSUES  
AD PRICES PRO-RATED  
EMAIL CHRISTIAN AT  
CHRISTIAN.DOHSE@GMAIL.COM

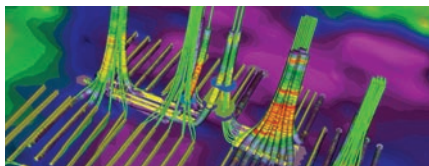




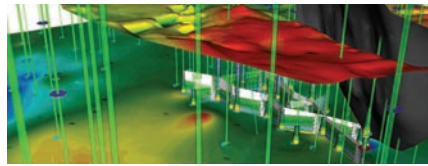
## Build reservoir analyses. Watch your potential soar.

IHS PETRA® provides a unique solution to integration, analysis and manipulation of geological, geophysical, petrophysical and engineering information. With easy data loading and a powerful and flexible database, you can both effectively manage projects and quickly visualize results using interactive mapping, cross sections, log plots, cross plots and more—all within a single system. Superior technical support and proven integration of customer enhancements make PETRA the highest-ranked<sup>1</sup> geological interpretation tool in the E&P industry for both reliability and accuracy and ease of use. **Energy information, refined.**

<sup>1</sup>Welling & Company Geological & Geophysical Software Study, 2009



Directional Well Module



3D Visualization Module

[ihs.com/petra-ccgs-1](http://ihs.com/petra-ccgs-1)



**The Source**  
for Critical Information and Insight

©2010 IHS Inc. All rights reserved.