

BULLETIN

**Corpus Christi
Geological Society**



and

**Coastal Bend
Geophysical Society**



**December
2014
ISSN 0739 5620**

American Shoreline, Inc.



Specializing in
Oil & Gas Exploration
& Wind Energy

Compliments of

Paul Strunk, President

Jena Nelson, VP Finance & Administration

Dennis Taylor, VP Geology

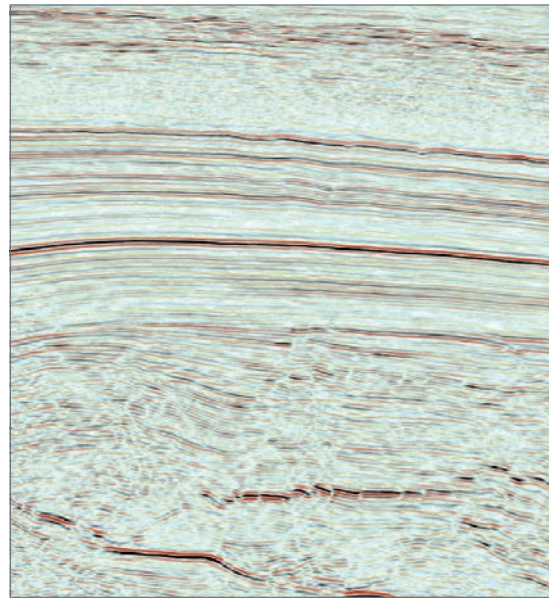
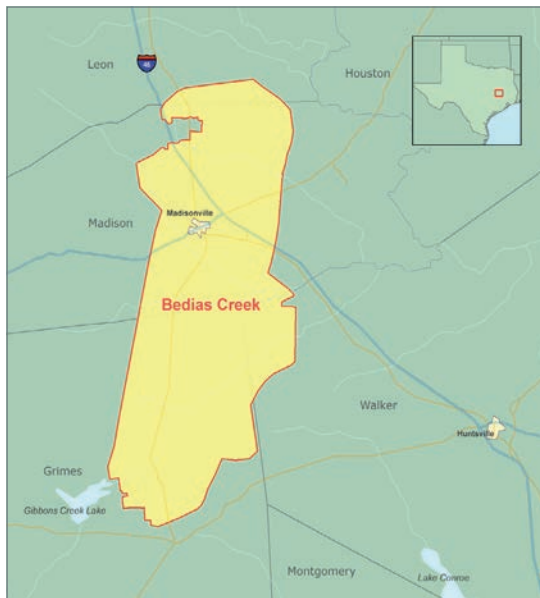
802 N. Carancahua
Frost Bank Plaza, Suite 1250
Corpus Christi, Texas 78401
(361) 888-4496

www.amshore.com



Bedias Creek 3D

Madison, Grimes, Walker,
and Leon Counties, Texas



- 323 mi² of high-quality, high-fold data (110-fold) acquired using cableless **UNITE** crews and a dynamite source
- State-of-the-art processing, including 5D Interpolation and Orthorhombic Pre-Stack Time Migration
- Data now available

For more detailed information contact us:

Scott Tinley +1 832 351 8544 scott.tinley@cgg.com
Cheryl Oxsheer +1 832 351 8463 cheryl.oxsheer@cgg.com

cgg.com/multi-client





CORPUS CHRISTI GEOLOGICAL SOCIETY

P.O. BOX 1068 * C.C. TX. 78403

2014-2015

www.ccgeo.org

OFFICERS

President	Leighton Devine	361-510-8872	ldevine@suemaur.com
President Elect			
Vice President	Randy Bissell	361-885-0113	randyb@headington.com
Secretary	Allison Corcoran	361-882-8400	allison@aaoperating.com
Treasurer	Zachary Corcoran	361-658-5850	zcorcoran1982@gmail.com
Past President	Bob Critchlow	361-882-3046	bcritchlow@virtexoperating.com
Councilor I	Rick Paige	361-884-8824	rickp@suemaur.com
Councilor II	Mike Lucente	361-883-0923	mikel@impexploration.com

AAPG DELEGATES

2006-14	Dennis Moore	361-886-5144	dennis.moore@bakerhughes.com
---------	--------------	--------------	--

EDITORS

Bulletin Editor	Marian Wiedmann	361-855-2542	wiedgulf@aol.com
Bulletin Tech. Editor	Susan Stone	361-739-4759	stonesciences@yahoo.com
Web Master	Chris Davis	361-537-1508	cdavis@spurfire.com

GEOLOGICAL SOCIETY COMMITTEES & CHAIRPERSONS

Advertising	Sara Miller	361-887-2691	sara_miller@eogresources.com
Business Cards	Christian Dohse	361-877-3431	christian.dohse@gmail.com
Arrangements	Allison Corcoran	361-888-8288	allison@aaoperating.com
Bloodmobile	Mike Lucente	361-883-0923	mikel@impexploration.com
Earth Day	Alan Costello	361-888-4792	acostello@royalcctx.com
Continuing Ed.	Stephen Thomas	361-888-8880	sthomas@virtexoperating.com
Education & Scholarship	Dawn Bissell	361-960-2151	bissells@swbell.net
Fishing Tournament	Leighton Devine	361-882-8400	ldevine@suemaur.com
History	Ray Govett	361-855-0134	ray30@hotmail.com
Membership	Dorothy Jordan	361-885-0110	dorothyj@headington.com

Type Logs	Randy Bissell	361-885-0113	randyb@headington.com
University	Frank Cornish	361-883-0923	frank.cornish@gmail.com
Liaison	Zach Corcoran	361-902-2857	zcorcoran1982@gmail.com



COASTAL BEND GEOPHYSICAL SOCIETY
P.O. BOX 2741 * C.C. TX. 78403
2014-2015

OFFICERS

President	Lonnie Blake	361-883-2831	lonnie_blake@eogresources.com
Vice President	Bob Witherspoon	361-884-8824	bobw@suemaur.com
Secretary/ Treasurer	Matt Hammer	361-888-4792	mhammer@royalcctx.com

COMMITTEES AND CHAIRPERSONS

Membership	Dorothy Jordan	361-885-0110	dorothyj@headington.com
	Randy Bissell	361-885-0113	randyb@headington.com
Golf Chairman	Fermin Munoz	361 960-1126	fmunoz04@hotmail.com
Scholarship/ Chairman	Ed Egger	361-947-8400	edegger69@gmail.com
Education	Vicki Marlett	214-557-0815	vmarlett@geotrace.com

**Visit the geological
Web site at
www.ccgeo.org**

TABLE OF CONTENTS

Officers, Committees, and Chairpersons, CCGS, CBGS.....	2 & 3
Blood Drive.....	5
Calendar of Meetings and Events.....	6 & 7
CCGS President's Letter.....	9
CBGS President's Letter.....	12
Luncheon Meeting Announcement.....	14
Gulf Coast Association of Geological Societies.....	18
Climate Corner - An Open Discussion.....	20
Geo Link Post.....	31
Type Logs of South Texas Fields.....	32
Order OIL MEN DVD.....	33
Wooden Rigs Iron Men.....	34
Professional Directory.....	35

BLOOD DRIVE

THE BLOODMOBILE – IN **DECEMBER, 2014**
WILL BE AT SOME CONVENIENT LOCATIONS
PLEASE CALL 855-4943 for those locations or go to
www.coastalbendbloodcenter.com



Don't be a Scrooge- play Santa Claus & Give some Blood!!

ATTENTION!!!

When you give blood: They have us listed as C.C. Geological Society. Our number with them is 4254 & it would be helpful if you can give them that number also.

This message approved by Mike Lucente

CCGS/CBGS JOINT MEETING SCHEDULE 2014-2015

September 2014							October 2014							November 2014						
S	M	T	W	Th	F	S	S	M	T	W	Th	F	S	S	M	T	W	Th	F	S
	1	2	3	4	5	6				1	2	3	4							1
7	8	9	<u>10</u>	11	12	13	5	6	7	8	9	10	11	2	3	4	5	6	7	8
14	15	16	17	18	19	20	12	13	14	<u>15</u>	16	17	18	9	10	11	12	13	14	15
21	22	23	24	25	26	27	19	20	21	22	23	24	25	16	17	18	<u>19</u>	20	21	22
28	29	30					26	27	28	29	30	31		23	24	25	26	27	28	29
														30						

Sept. 10, 2014
5:30p.m.—8:30p.m.
Kickoff BBQ
Howard’s BBQ & Catering
1002 Antelope Street

Oct. 15—11:30a.m.—1:00p.m.
Speaker: Ken Williams—
Halliburton.
“Barostratigraphy”

Nov. 19—11:30a.m.—1:00p.m.
Speaker: Tony Hauglum--Rivera
Exploration. “Eagleford Update”

December 2014							January 2015							February 2015						
S	M	T	W	Th	F	S	S	M	T	W	Th	F	S	S	M	T	W	Th	F	S
	1	2	3	4	5	6					1	2	3	1	2	3	4	5	6	7
7	8	9	<u>10</u>	11	12	13	4	5	6	7	8	9	10	8	9	10	11	12	13	14
14	15	16	17	18	19	20	11	12	13	14	15	16	17	15	16	17	<u>18</u>	19	20	21
21	22	23	24	25	26	27	18	19	20	<u>21</u>	22	23	24	22	23	24	25	26	27	28
28	29	30	31				25	26	27	28	29	30	31							

Dec. 10—11:30a.m.--1:00p.m.
Speaker: Woodson Godfrey—
PaleoSource. “Distinguishing a
Resource Play

Jan. 21--11:30a.m.—1:00p.m.
Speaker: Lei Zhang—
Schlumberger. “Seismic
Inversion to Reservoir
Simulation”

Feb. 18—11:30a.m.—1:00p.m.
Speaker: Collegiate Month.
“Presentation by TAMUCC,
TAMUK and DelMar”

CCGS/CBGS JOINT MEETING SCHEDULE 2014-2015

March 2015							April 2015							May 2015						
S	M	T	W	Th	F	S	S	M	T	W	Th	F	S	S	M	T	W	Th	F	S
1	2	3	4	5	6	7				1	2	3	4						1	2
8	9	10	11	12	13	14	5	6	7	8	9	10	11	3	4	5	6	7	8	9
15	16	17	18	19	20	21	12	13	14	15	16	17	18	10	11	12	13	14	15	16
22	23	24	25	26	27	28	19	20	21	22	23	24	25	17	18	19	20	21	22	23
29	30	31					26	27	28	29	30			24	25	26	27	28	29	30
														31						

March 11—11:30a.m.—1:00p.m.
 Speaker: Fred Hilterman
 “Seismic Attribute analysis for
 the Gulf of Mexico”

April 15—11:30a.m.—1:00p.m.
 Speaker: Richard Adams—Carr
 Resources. The Lower Woodbine
 Organic Shale of Burlenon and
 Brazos Counties, Texas: Anatomy
 of a New “Old” Play

Distinguished Speaker--Mark
 Papa

Calendar of Meetings and Events

Calendar of Area Monthly Meetings

- Corpus Christi Geological/Geophysical Society.....Third Wed.—11:30a.m.
- SIPES Corpus Christi Luncheons..... Last Tuesday—11:30a.m.
- South Texas Geological Society Luncheons..... Second Wed—noon San Antonio
- San Antonio Geophysical Society Meetings..... Fourth Tuesday
- Austin Geological Society..... First Monday
- Austin Chapter of SIPES.....First Thursday
- Houston Geological Society Luncheons..... Last Wednesday
- Central Texas Section of Society of Mining, Metallurgy & Exp..... 2nd Tues every other month
 In San Antonio

SPONSORS

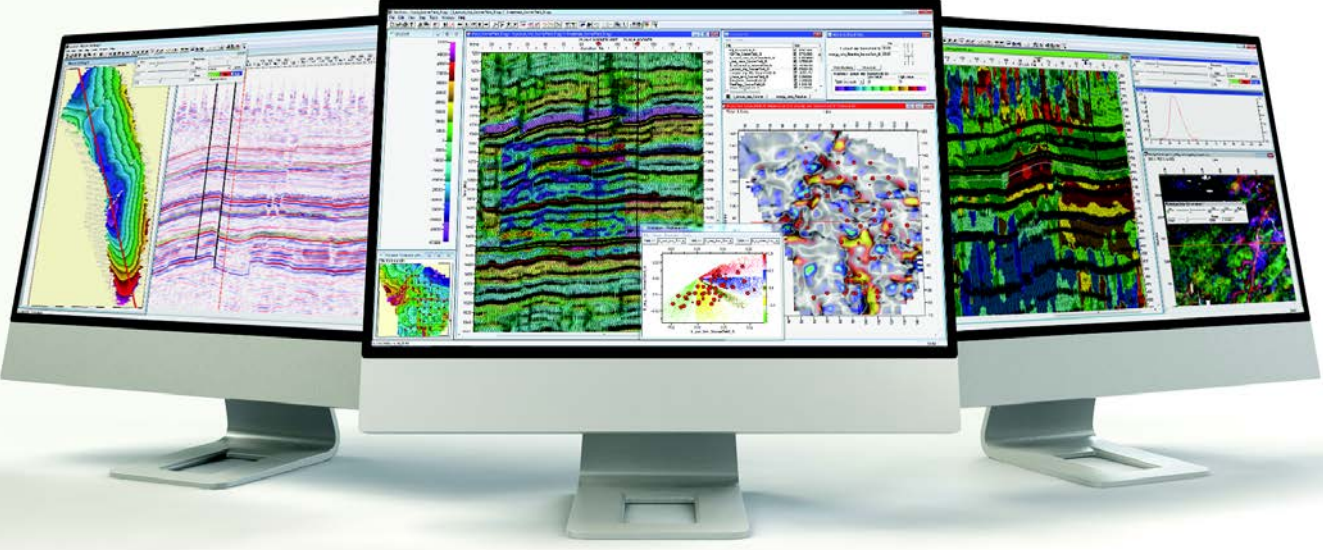


The logo for Sue Maur Exploration & Production, LLC features a stylized wellhead and seismic data lines. The company name is written in a bold, sans-serif font. To the left of the logo is a map of Texas composed of several smaller images: an oil pumpjack, a flare stack, a modern office building, and a sunset over a field.

**SUE MAUR
EXPLORATION &
PRODUCTION, LLC**

802 N Carancahua St
Suite 1000
Corpus Christi, TX 78401-0015
Phone: (361) 884-8824
Fax: (361) 884-9623

**Exploring Texas
since 1968**



Three computer monitors are shown, each displaying different views of seismic data analysis software. The central monitor shows a large seismic volume with various color-coded attributes. The left and right monitors show smaller, more detailed views of the data, including cross-sections and attribute maps.

Seismic Attributes *Simplified*

Resolve GeoSciences delivers a complete attribute workflow with properly conditioned volumes, data dependent color palettes and realistic ranges. Every project is ready to load into your interpretation workstation and to view and analyze with SeisShow, our powerful attribute analysis software provided complimentary with our services.

Learn More at ResolveGeo.com | info@resolvegeo.com | 713-972-6200

**Resolve
GeoSciences, Inc.**

Seismic Attributes - HQ Frequency Enhancement - Spectral Decomposition - Complimentary Viewing Software



CCGS PRESIDENT'S LETTER

The Holidays are here! It is funny how these things can sneak up on you. The last month has been a whirlwind for me both personally and professionally. Just recently I've had the opportunity to take my blinders off, and I look up to find Christmas trees and Holiday decorations going up everywhere. My inbox is filling up with invites to the local Christmas parties, and I'm looking forward to spending some time with my family. I truly have a lot to be thankful for.

I would like to thank everyone who came out to hear Tony Hauglum and David Kirk give us their "Eagleford Update". Our local professionals always draw a good crowd, and thanks to them we had one of the most well attended meetings in the last couple of years. This month, our luncheon has been moved up to December 10th. Please mark your calendars, and join us to hear Woodson Godfrey with Paleosource give a talk on "Distinguishing a Resource Play".

November was a great month for the CCGS. We held our second short course of the year, we had our inaugural "CCGS Pint Nite", and our Scholarship Committee was able to award scholarships to 9 deserving young geoscientists. I appreciate all of our sponsors, members, and volunteers that help make all this possible.

Keep an eye out for upcoming announcements. The CCGS has a great schedule of events coming up during and after the Holidays. Stay involved and VOLUNTEER. I wish everyone a happy holiday season and safe travels wherever your plans may take you.

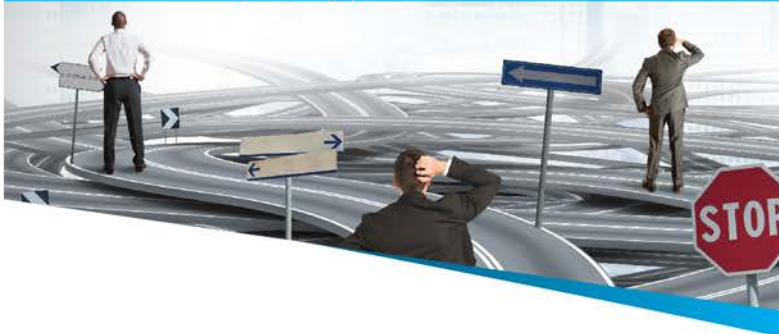
Leighton L. Devine

CCGS President



Licensing Data?

Don't Let Tape Copy Costs - Drive Your Decision



NEGOTIATE
your tape copies of field data
BEFORE signing contract.

OUR SERVICES

- Onshore and OBC Controlled Amplitude & Controlled Phase (CA/CP) Processing
- Surface Consistent Processing
- Seamless Multi-Survey Merge
- Gather Conditioning with AVO Attributes
- Inversion and Fluid / Lithology Prediction

SENIOR PROCESSING GEOPHYSICISTS

- Daniela Smoleanu / Partner
- Karen Chevis-McCoy / Partner
- Steven Larson / Partner

INTEGRITY
SEISMIC SERVICES
(713)357-4706
www.integrityseismic.com

Zane Swope
President - Partner
(713)357-4706 Ext 7006
(281)635-9162 (Cell)
zswope@integrityseismic.com

James Bloomquist
Business Development Manager
(713)357-4706 Ext 7008
(281)660-9695 (Cell)
Jbloomquist@integrityseismic.com

What are your well costs?

\$3 MM, \$5 MM, \$10 MM

100 Square miles of true
CA/CP PSTM re-processing
≈ **\$150,000**

100 Square miles of tape
copy charges
≈ **\$20,000 - \$40,000**

DON'T YOU OWE IT

to **YOURSELF** and
YOUR COMPANY

to have the best image
before drilling?



Performance You Can Count On

An acknowledged leader in today's exploration and production industry, EOG Resources looks ahead.

Annually, EOG is one of the most active drillers in the United States. We grow through the drill bit, rather than seeking major acquisitions or mergers to bolster our reserves and production. This unrelenting focus on organic production growth has proven successful because we have identified significant North American resource plays for tomorrow. Our creative, hardworking explorationists and those who support them utilize the latest technology available in the marketplace, adapting and modifying it to meet the challenges EOG faces. With a focus on returns, EOG continues to produce peer-leading financial and operational results.

In 2013, EOG became the largest onshore oil producer in the Lower 48, and we're still growing.

EOG Resources, Inc.

539 N. Carancahua
Suite 900
Corpus Christi, TX 78401-0908
361-883-9231
www.eogresources.com



AS GOOD AS OUR WORD TAP INTO OUR RESERVOIR



www.dawson3d.com

509 W Wall, Suite 800

Midland, Texas 79701

432-884-3000

800-D-DAWSON

Houston, Texas 713-917-6772

Denver, Colorado 303-723-0440

Oklahoma City, Oklahoma 405-848-7512

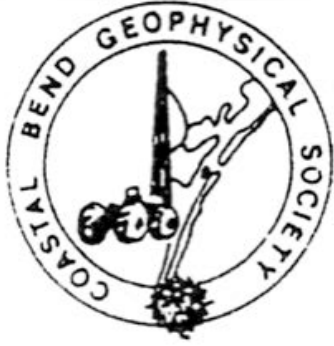
Michigan 248-448-9533

EXPERIENCE For over a half-century Dawson has helped its clients succeed. In both seismic acquisition and processing, we deliver high quality data that gets clear-cut results. From field equipment to software, we put the latest technologies into the hands of seasoned professionals who have geophysical knowledge specific to all major U.S. basins. Decades of acquiring data and imaging objectives to provide total subsurface picture. That's what our experience gives you.



Dawson Geophysical Company

Planning • Design • Acquisition • Processing • Results



CBGS PRESIDENT'S LETTER

News - We had some issues develop getting Fred Hilterman to the Seismic Workshop, but Deborah Sacrey stepped up at the last minute and filled in with a couple of excellent discussions. Thank you Deborah, and thanks to Geotrace and Vicki Martlett for supporting the event. We had 42 pre-registered with 29 participating after the cancellation/restart with Deborah. Both of the presentations will be uploaded to the CCGS website and available to download. Fred Hilterman has been re-scheduled for the March 2015 luncheon talk. Plans are being made for the 2015 Seismic Workshop. Stay tuned.

Business - The 2014 SEG Convention in Denver had 8500 attendees compared to 8400 in 2013 in Houston. They had about the same floor space as last year--1000+ technical presentations. The convention will be in New Orleans next year. Heard that oil prices and some projected budgets were causing some frowns. Report is that business activity (ie contracts) at the convention was up from last year. I have ordered the complete set of technical talks on DVD and have about a dozen I want to review. Will see if we can get the good ones into Corpus.

Education -

GSH Webinar: "Understanding Seismic Anisotropy in Exploration and Exploitation" Find the registration on the GSH website. Don't forget to mention that you heard it from CBGS

The SEG has released 2 new virtual courses as follows. Go to the SEG Website/Education to access

- "Integrated Interpretation of Seismic, CSEM and Well Log Data for Reservoir Characterization"

- "Geostatistics for Seismic". I have taken a version of the geostats course by Dubrule, its good.

Parting Thought - (Its 45 degrees and raining outside right now as I write this)
 It doesn't matter how big a ranch you own or how many cows you brand, the size of your Funeral is still gonna depend on the weather—Harry Truman

Monthly O&G Statistics

Seismic Crews - US Onshore	Current Month	Last Month	Difference	(Per SEG/Seismic Crew Reports Survey)
	Onshore/Offshore	Onshore/Offshore		
	41/18	41/13	+5	
	Current Month	Last Month	Last Year - Monthly	(Per Texas RRC, last reported)
Texas Production	MMBO/BCF	MMBO/BCF	MMBO/BCF	
Oil	69.2	73.3	67	
Gas	621	662	703	
	Current Month	Yr to date - 2014	Yr to date - 2013	(Sept 2014 - Last Summary Report)
Texas Drilling Permits	3,013	19,732	16,558	
Oil wells	934	5,824	5,280	
Gas wells	173	1,085	1,037	
Oil and Gas wells	1,811	12,020	9,593	
Other	12	142	151	
Total Completions	2,492	23,149	19,114	
Oil Completions	2,048	19,835	14,518	
Gas Completions	328	2,498	4,101	
New Field Discoveries	4	31	40	
Other	118	816	495	

Lonnie Blake
CBGS President

Corpus Christi Geological Society & Coastal Bend Geophysical Society

LUNCHEON MEETING ANNOUNCEMENT

Wednesday, December 10, 2014 (2nd Wed. of December)

- Location:** Corpus Christi Town Club, 6th Floor (800 North Shoreline)
- Bar Sponsor:** Pete Graham, Schlumberger
- Student Sponsor:** Core Lab (Juan Cabasos) and the CCGS
- Time:** 11:30 a.m. Bar, Lunch follows at 11:45 a.m., Speaker at Noon.
- Cost:** **\$25** (a \$3 surcharge if no reservation). No-shows will be billed.
- Reservations:** Please by Monday before – email allison@aaoperating.com
-

**Luncheon Topic: What makes a Shale Play?
Autochthonously charged shale trends as environmental systems:
the living basin and kerogen source analysis.**

Presented by Woodson Godfrey, Paleosource

Compiling results from several years of basin sourcing projects it became evident that the most effective and accurate way of predicting and finding the desired hydrocarbon product was the reconstruction of the living basin. An environmental “checklist” was derived of features common to known successful resource plays. All of the criteria for energy production, fixation, conversion and storage correspond to the convergence of larger scale paleoenvironmental trends and conditions, which form a powerful tool for predicting new and better exploiting known resource plays..

About Woodson Godfrey: “While still in graduate school, my first professional work in the energy industry was as a consultant on the Paleogene Project for Amoco, where I was supervised by the incomparable Ted Karmen. Thereafter, a freshly minted MS from LSU in hand, I joined Shell Offshore in New Orleans, which served as a ten year apprenticeship in deep-water Plio-Pleistocene and Miocene, the offshore Mesozoic and the onshore Paleogene. Ten years later, I did a brief stint as internal Consulting Biostratigrapher for Conoco which, while it afforded a wide scope of possible


assignments, was too far removed from direct contact with the work of my profession for my liking. I became a self-employed consultant twenty three years ago and have since then worked extensively not only the ages and trends above, but also the Jurassic, Permian, Pennsylvanian, Mississippian and Devonian in the Appalachian fold-belt, southwestern United States and, of course, the Gulf of Mexico. I would like to think the fun is just beginning.”

Note for this month: The presenter wants to have a format that allows for audience discussion and participation in the presentation! Bring your best questions, here are a few::

- *Is the Jackson Shale a promising resource play?*
- *Is TOC enough?*
- *And anything you want to ask...*

If you would like to contact Woodson Godfrey before the luncheon (or after), his email is paleosource@oplink.net

SPONSORS



Nueces Energy, Inc.
P.O. Box 252
Corpus Christi, Texas 78403
Office: (361) 884-0435
Fax: (361)-654-1436
www.nuecesland.com

Nueces Energy, Inc. is a complete land services company in the business of providing professional landmen and project management to various energy related jobs primarily in the oil and gas industry.

With over 30 years of industry experience, we specialize in determining surface and subsurface ownership and negotiating and acquiring contracts, rights of way agreements, and easements to provide our clients with the legal right to explore and develop oil and gas resources. We provide a full service land company capable of managing any project no matter how large or small.



THUNDER EXPLORATION, INC.
Celebrating 30+ years of prospect generation and exploration in the following South Texas plays and trends.

Frio	San Miguel	Edwards
Jackson	Austin Chalk	Pearsall
Yegua	Eagle Ford	Sligo
Wilcox	Buda	Cotton Valley
Olmos	Georgetown	Smackover

Thunder is currently seeking non-operated working interest participation in projects and prospects.

Contact Walter S. Light Jr.
President/Geologist
713.823.8288
EMAIL: wthunderx@aol.com

Headington Energy Partners, LLC



902 North Tower – 500 N. Shoreline Blvd. – Corpus Christi, Texas
Phone: (361) 885-0110

SPONSORS

STALKER ENERGY, L.P.

Austin Office:

1717 W. 6th Street, Ste 230
Austin, Texas 78703
512.457.8711

Contact: Bill Walker, Jr.
bwalker@stalkerenergy.com

Houston Office:

2001 Kirby Drive, Suite 950
Houston, Texas 77019
713.522.2733

Contact: Todd Sinex
tsinex@stalkerenergy.com

www.stalkerenergy.com



LMP PETROLEUM, INC.

EXPLORING SOUTH TEXAS

615 N. Upper Broadway
Suite 1770
Wells Fargo Bank Building
Corpus Christi, Texas 78401-0773

361-883-0923
Fax: 361-883-7102
E-mail: geology@lmpexploration.com

WELLSITE GEOSCIENCE SERVICES



**When time is money,
Wellsite Geoscience is
money well spent.**

Whether you're exploring a basin, producing a well or completing a shale play, time is money. That's why Weatherford Laboratories brings a suite of formation evaluation technologies right to the wellsite. Utilizing mud gas and cuttings, these technologies provide detailed data on gas composition, organic richness, mineralogy and chemostratigraphy in near real time. As a result, operators now have an invaluable tool to assist with sweet spot identification, wellbore positioning, completion design and hydraulic fracturing. We call it Science At the WellSite. You'll call it money well spent.

SCIENCE AT THE WELLSITE™
www.weatherfordlabs.com

Formation Evaluation | Well Construction | Completion | Production

©2013 Weatherford. All rights reserved.





GULF COAST ASSOCIATION OF GEOLOGICAL SOCIETIES

www.gcags.org



1. 65th Annual Convention and Exhibition hosted by the Houston Geological Society, Sept 20-22, 2015, George R. Brown Conv. Center, Houston, Texas

Paper themes:

- New Oil and Gas Discoveries
- Un-Conventional Plays
- Development Field Studies
- GOM Shelf and Onshore Plays
- Salt Tectonics and Traps
- Mexico and Caribbean Plays
- Gulf of Mexico Deepwater
- Environmental Geology
- Coastal Geology and Surface Impact
- Geology-Geophysics-Engineering
- Portfolio Management
- Geophysical Technology

Call for Papers deadline December 13, 2014 webpage: www.gcagshouston.com or contact Linda Sternbach, Technical Program Chair, at linda.sternbach@gmail.com.

2. Society Representative on the GCAGS Board of Directors: The Gulf Coast Association of Geological Societies (GCAGS) has 13 affiliated societies. The affiliated societies are the core of the GCAGS. The President of each affiliated society (or his or her representative) is a voting member of the GCAGS Board of Directors. As such, the societies have a strong voice in the decisions made by the GCAGS Board of Directors.

3. AAPG Advisory Council Representation: The Gulf Coast Section is the largest AAPG Section with close to 9000 members. Because of its size, the GCAGS has two Advisory Council Section Representatives while the other Sections have only one. "The AAPG Advisory Council serves in an advisory capacity to the AAPG Executive Committee. They report on matters involving ethics and discipline, long-range planning, constitutional review, nominations for officers and honors and awards and other special projects as requested by the Executive Committee."

4. GCAGS Student and Faculty Grants: Each year the GCAGS awards \$20,000 in scholarship grant money to approximately 20 deserving graduate or PhD students in the Gulf Coast area. In addition, the GCAGS awards \$10,000 to two faculty members to support their research on Gulf Coast geology.

GCAGS PRESIDENT Charles Sternbach 281-679-7333 carbodude@gmail.com	GCAGS VICE PRESIDENT Brent Hopkins 361-884-8824 brenth@suemaur.com	GCAGS PAST PRESIDENT Mary Broussard 337-354-5041 Mary_Broussard@fmi.com
2015 GCAGS CONVENTION GENERAL CHAIRMAN Larry Bartell 713-781-6974 ldbartell@legendsexpl.com	GCAGS TREASURER Steve Hill 713-880-4343 steve.hill@LSDecker.com	GCAGS EXECUTIVE DIRECTOR Kate Kipper 512-925-1200 gcags.mail@gmail.com

5. GCAGS Scholarship Fund Matching Program: The GCAGS periodically initiates a Scholarship Fund-Matching Program for the societies. This is a great opportunity for the societies to double the value of donations going to their scholarship foundations, and in turn, help deserving geoscience students in their local areas. The total value of the donations from the GCAGS is \$195,500.

6. Travel to Student Chapter Leadership Summit: Each year the GCAGS provides \$1000 in support for student travel to the AAPG Student Chapter Leadership Summit. Summit attendees participate in training, interact with AAPG leadership, and establish mentoring relationships.

7. Advertising: Every year each GCAGS Affiliated Society receives a free ¼ page of advertising space (black & white) in the AAPG Explorer.

8. Sponsorship of Section Level Imperial Barrel Award Competition: If sufficient corporate funding is not raised, the GCAGS will donate \$5000 (on an annual basis) to sponsor the Gulf Coast Section IBA competition. The GCAGS also volunteers to host the Gulf Coast Section university IBA teams and administer the entire event including one-day training for all participants. The IBA program is hugely popular with the students and industry support has grown immensely over the last few years. Two Gulf Coast Universities have won the Global IBA competition: The University of Texas, Austin (1 victory), and the University of Louisiana, Lafayette (2 victories).

9. Honors and Awards: Every year members of GCAGS' affiliated societies are nominated by their peers for awards for their service and accomplishments at the Society, Section and the National AAPG levels. Winners are recognized with an award plaque at the GCAGS Convention.

10. Teacher of the Year Award: In addition to an award plaque, the GCAGS gives the winner of the Owen R. Hopkins Outstanding Earth Science Teacher Award \$2000 (\$1500 for personal use and \$500 for use by their school) and an expense paid trip to the Annual GCAGS Convention.

11. GCAGS Transactions: Professional registrants for the GCAGS Convention receive an electronic version (CD, flash drive) of the GCAGS *Transactions* with their registration fee.

12. GCAGS Journal: The *GCAGS Journal* is a peer-reviewed premier publication dedicated to Gulf Coast geoscience research and concepts, Contact Barry J. Katz BarryKatz@chevron.com

13. WWW.GCAGS.ORG: The GCAGS website is linked to local society websites. New material, comments, updates, etc. are welcome.

14. Social Media, ability to send out updates on GCAGS events, contact Dianna Phu dianna.phu@intecsea.com

Climate Corner – An Open Discussion

Several members of the CCGS have recently expressed opinions and concerns regarding the “debate” around the topic of man-caused global warming. Within fellow geological societies across the Gulf Coast, there is a populist push-back because of the recent reports and accusations of sensationalized, misinterpreted, or (in the worst case) altered climate and temperature data used to underpin climate change advocates and policy-makers. For many scientists, the debate is already settled – that mankind is the principle cause of warming because the data, no matter the source or version, is so convincing. So convinced, the time to act is now.

Most geologists will agree that the Earth’s climatic history is very complicated. It is multi-cyclic and often punctuated by terrestrial and extraterrestrial cataclysm. Given the Earth’s long history, looking to the last 200 years of climate history to determine patterns, exact causes and predict future trends is worth discussion.

In reality, our “climate” is not political. As responsible scientists, we need to approach the topic of “climate change” in a way that satisfies our natural inquisitiveness, informs society, and expands our collective understanding. To be fair to all, we must ask ourselves and others the tough questions. The Society is committed to provide an outlet for the exchange and discussions of thoughts and ideas, no matter your “side” of the debate.

In that spirit, all member submissions are welcomed. Send your thoughts to Randy Bissell, bissellr@swbell.net

Members of the Geological Society:

I think that member participation and input to the bulletin on subjects such as this is a great idea, and I am happy to initiate such efforts.

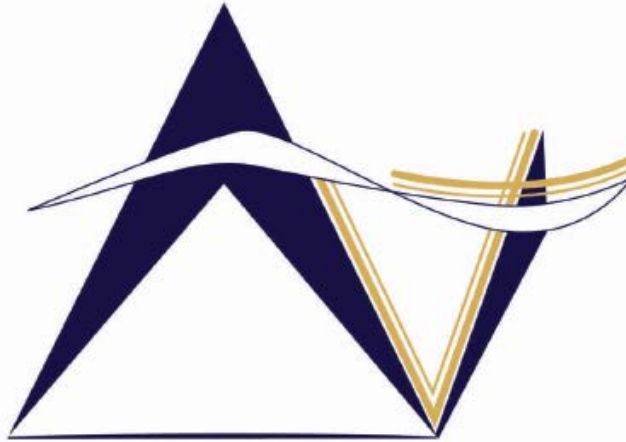
I have been concerned that the current mood of “political correctness” in our country has overridden the desire by many to speak out when they do not agree with comments by a speaker or person “of authority”—however, the comments by Dr. Peter Sale which claim all forms of climate aberration (storms, droughts, floods, etc.) are due to mankind are right up there with earthquakes and floods being caused by an angry God 2,000 years ago!

I would further submit that the “global environmental crisis” as noted in the announcement of the talk by Dr. Peter Sale at Texas A&M Corpus Christi, on Friday October 31, may be more in the minds of a certain group with an agenda, and that the “environmental crisis” is more of a means to an end. The similarity between some climate alarmists and cult religion is disturbing.

There is certainly adequate data to demonstrate that on a geologic time scale the earth undergoes periodic warming and cooling cycles related to a number of variables, only some of which are sun cycles and perturbations in the orbit of the earth around the sun (Milankovitch Cycles). There are likely additional causes as yet unidentified.

Please note the following three graphs:

SPONSORS



VirTex Operating Company, Inc.

*615 North Upper Broadway, Suite 525, Corpus Christi, Texas 78477
(361) 882-3046*

SEI®

Seismic Exchange, Inc.

Strategic Speculative Surveys
Geophysical Data Marketing & Management

YOUR
Full Service
National
Seismic Data
Marketing Firm

Corpus Marketing Contact:
Beau Patrick

Corpus Office
361.884.2936

CORPUS CHRISTI DALLAS DENVER HOUSTON NEW ORLEANS TULSA

11050 Capital Park Dr., Houston, Texas 77041 832.590.5100

www.seismicexchange.com

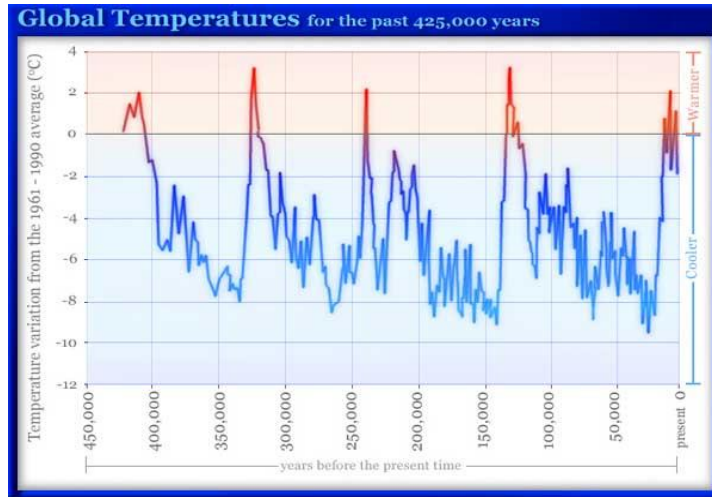
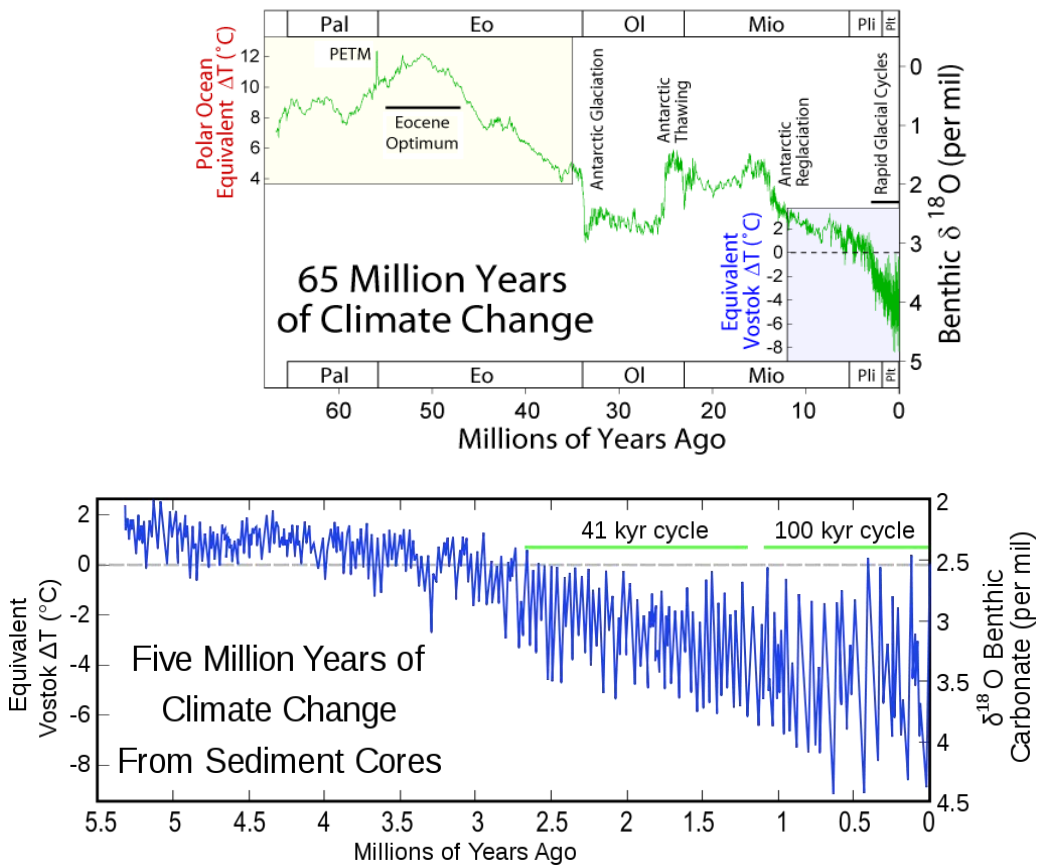


Figure 1. Global temperatures measured from the Antarctic ice showing stable, cyclic chaos and self-similarity.

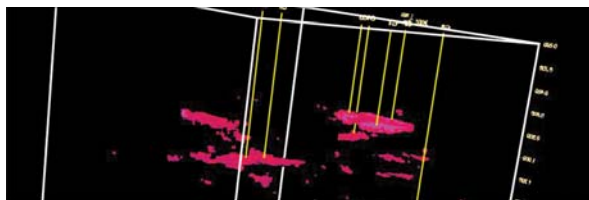
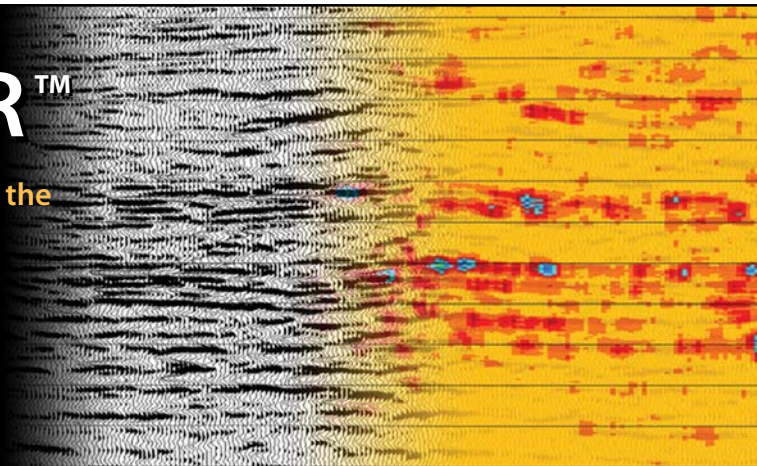


Figures 2 and 3. Oxygen isotope levels indicating that current climatic conditions are below historical levels and normally cyclic.

DRILL SMARTER™

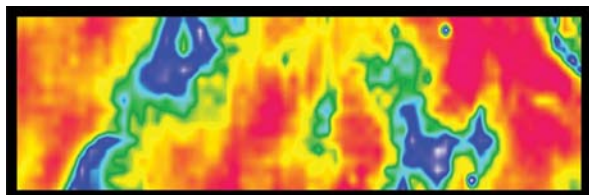
Proprietary Post-Stack Technologies to Aid in the Analysis of Seismic Data and Identification of Direct Hydrocarbon Indicators

Reduce risk • Increase exploration success
Stay ahead of the competition • Improve your ROI



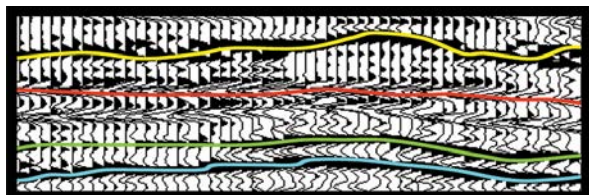
EnergyAbsorptionSM

Measures high frequency absorption indicating the location of increased porosity and potential gas accumulations



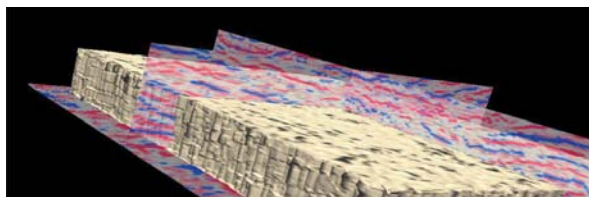
SpecViewSM

Spectral Decomposition identifying hidden stratigraphic information and subtle anomalies within a specific horizon



HiResSM

Recovers detail lost in the standard seismic response



SemCubeSM

Measures a semblance response indicating faulting, fracturing and other anomalous areas

SeismicVentures[®]

For more information, contact Sara Davis at s_davis@seismicventures.com or (281) 240-1234 x206

Seismic Ventures, Inc. • 12603 Southwest Freeway, Suite 600 • Stafford, Texas 77477
t: 281-240-1234 • f: 281-240-4997 • www.seismicventures.com

While the first graph above clearly shows the periodicity of warming and cooling trends over a 425,000 year period, if history repeats we may be on the verge of dropping into another period of cooling and advancing ice sheets. How will advancing ice sheets affect the ability of man to provide food for growing populations? The answer is the potential for widespread famine due to loss of cropland and shorter growing seasons.

The second and third graphs also clearly show that since early Eocene time the Earth has undergone gradual cooling, leading to the current “ice age” of actually having polar ice caps. Approximately 80% of the Earth’s climate history has been a time of no polar ice caps, and the current “ice age” is one of four documented “ice ages” in the history of the earth. At what point in time will the Earth seek to re-establish its normal temperature range, which is warmer than temperatures experienced today, as evidenced by the preceding graphs?

The Earth has been warming since the last glacial maximum, without the benefit of help from mankind. Sea level along the Texas coast was previously 550-600’ lower than the sea level today, as evidenced by the location of the continental shelf in the Gulf of Mexico. Sea level has been rising for many years, so for climate alarmists to say that rising sea level today is a global threat borders on hysteria and ignores available history of sea level fluctuations.

The climate of the Earth has been aptly demonstrated to show that periodic warming and cooling phases are part of Earth’s natural history, and the current “global warming position of the United Nations” that our climate is in crisis, is mis-guided and ignores the history of our planet. One cannot describe an elephant by seeing a picture of only its trunk, and one cannot honestly understand our planet’s climate model with the analysis of a couple hundred years of data, some of which is dubious at best.

Dr. Sale has a website (<http://www.petersalebooks.com/>) selling his book Our Dying Planet with the following description:

“Our environmental crisis is multi-faceted, pervasive and very serious. Coral reefs are particularly hard hit, and stand a real chance of being the first ecosystem ever eliminated by humanity – for us that’s quite a step up from causing extinctions of single species, a step up in irresponsibility. The Arctic is thawing so rapidly that scientists have trouble imagining what it will be like in 10 or 20 years. Floods in Pakistan, droughts in Australia and in East Africa, giant dust storms in Arizona are all parts of this crisis. So too are our dwindling catches of fish, the growing number of dead zones in the oceans, the outbreaks of new pest species and new diseases, growing restlessness and strife in many parts of the world, and the growing prices for food, water, and fuel. The crisis is an ecological one, but we are not immune to ecology. The crisis is also well under way, and it is getting much worse, very quickly.”

I sincerely hope the planet is still here by the time this gets published. I regret that I was not in town to pose questions regarding this rather controversial subject. Moreover, I would welcome a response from the alarmist group that addresses the question of how the current warming trend of several hundred years fits into the historical variations of our climate, or more importantly how it fits into the warming trend that Earth has been experiencing for thousands of years since the last glacial maximum. Thousands of years of warming has been ignored while the alarmists concentrate on several hundred years.

Please note that this response is my opinion based on my independent research of available data, and I make no attempt to represent any society or organization other than my own.

H. Tony Hauglum, Riviera Exploration, LLC

References:

(Figure 1) Dr. Robert E. Buxbaum, *THE GIFT OF CHAOS*,

<http://www.rebresearch.com/blog/the-gift-of-chaos/>.

Graph from Petit, J.R., J. Jouzel, D. Raynaud, N.I. Barkov, J.M. Barnola, I. Basile, M. Bender, J. Chappellaz, J. Davis, G. Delaygue, M. Delmotte, V.M. Kotlyakov, M. Legrand, V. Lipenkov, C. Lorius, L. Pépin, C. Ritz, E. Saltzman, and M. Stievenard. 1999. Climate and atmospheric history of the past 420,000 years from the Vostok Ice Core, Antarctica. *Nature* 399:429-436

(Figures 2/3) http://commons.wikimedia.org/wiki/File:Five_Myr_Climate_Change.png

(Quotation) (<http://www.petersalebooks.com/>)

SPONSORS

CHARGER EXPLORATION

Michael L. Jones
President/Geologist

Onshore Gulf Coast Prospect Generation and Consulting

1001 McKinney Street, Suite 801 Houston, TX 77002
Ofc: 713.654.0080 Cell: 713.398.3091
Email: mjones@chargerexploration.com
www.chargerexploration.com

Serving Corpus Christi for over 20 years



- We process 1st class mail with a direct discount to you
- No meter procedure change except for the amount you meter your envelopes

CALL 888-4332 for details - Ask for Anne

That old gas kick could be your next discovery!

Characterization of Unconventional Reservoirs

Traditional methods of core analysis cannot yield acceptable results when applied to unconventional reservoirs such as gas shales, tight gas sands, coals and thin bed formations.

Production controls on these reservoirs are not limited to hydrocarbons in place, permeability and porosity. Pay identification requires an understanding of complex lithologies and exotic mineralogies.

Only Core Lab offers the comprehensive range of unique technologies required to optimize your unconventional reservoirs.

Geological Petrophysical Geomechanical Geochemical



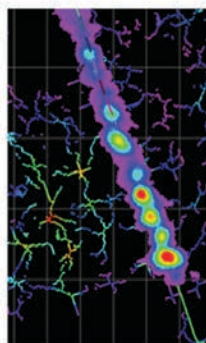
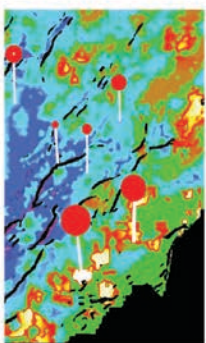
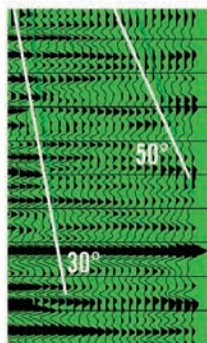
To learn more about our unique unconventional reservoir evaluation services contact Core Lab. (713) 328-2121 or (361) 289-5457 psinfo@corelab.com

© 2005 Core Laboratories. All rights reserved.

SPONSOR

<p>www.GeoSteering.com</p> <p>281-573-0500 info@geosteering.com</p>	<p>Personnel with degrees & 20+ years of oilfield experience</p> <p>Proprietary software</p> <p>TST interpretation for GR only jobs</p> <p>Image displays / interpretation for jobs with azimuthal GR, resistivity or density</p> <p>Resistivity modelling / interpretation for jobs with LWD propagation resistivity</p> <p>Real-time (always)</p>
<p>Free introductory consultation with modeling: let us demonstrate whether images or propagation resistivity could add value to your well.</p>	

SEIZE THE CUMULATIVE ADVANTAGE



Unique value comes from the cumulative impact of the combined application of technologies, workflows and experience. Global's seismic solutions include data acquisition, processing, analysis and microseismic. Our objective is to help oil and gas companies identify and characterize prospectivity and productivity, reduce risk, optimize well completions and monitor changes in hydrocarbon reservoirs.

We encourage you to seize the cumulative advantage of our technologies, workflows and experience.

ACQUISITION



PROCESSING



ANALYSIS



MICROSEISMIC



Global Geophysical Services, Inc.
ADVANTAGE@globalgeophysical.com
www.globalgeophysical.com
+1 713.972.9200



DOWNLOAD THE WHITE PAPER AT

www.globalgeophysical.com/advantage

SPONSORS

KNOWLEDGE REVEALED

PURPOSE DRIVEN

- Unrivaled land seismic acquisition capabilities
- Specific solutions for all terrains and environments (land, shallow water/transition zone and OBC)
- Purpose driven crews with proven experience around the world
- Processing and Interpretation services revealing the project knowledge you need
- Full azimuth 3D and 3C coverage in unconventional resource plays
- Multi-Client opportunities in North America, Latin America and Australasia
- Proven experience in:
 - Azimuthal anisotropy resolution and fracture identification
 - Multicomponent processing
 - AVO processing and inversion



INNOVATIVE
GEOPHYSICAL
SOLUTIONS



geokinetics.com

SPONSORS



Since 1905

Royal Exploration Company, Inc.

Bank of America

**500 N. Shoreline Blvd. Suite 807 N
Corpus Christi, Texas 78471-1008**

**Alan Costello - Geologist Robert Rice - Geologist
Matt Hammer - Exploration Manager**

Telephone: 361-888-4792 Fax: 361-888-8190

sponsors



Winn Exploration Co., Inc.

Actively Seeking High Quality
Drilling Prospects

Contacts:

Mike Layman (Geophysicist)	361-844-6922
Tom Winn (Geologist)	361-844-6992
Southern Winn (Geologist)	361-844-6998

800 North Shoreline Blvd.
19th Floor, North Tower
Corpus Christi, Texas 78401

Office: 361-844-6900 Fax: 361-844-6901

WEL-LAB

HYDROCARBON LOGGING SERVICE



Operating in South Texas and Gulf Coast since 1961

Contact: Mike Bullard

P.O. Box 1011

Kingsville, Texas 78364

361-221-9717

Email: md_bullard@sbcglobal.net

A Great Place For Business

In the heart of the Business District
Broadway at Leopard

- Onsite Management
- Conference Room
- Deli & Vending Room
- Security Card Access
- High Speed Elevators
- View of Corpus Christi Bay

COMMITTED TO EXCELLENCE
Yesterday • Today • Tomorrow

The
600
BUILDING

Contact
Ellen Blasingame
698-6000

ecblasingame@netscape.net



GEO LINK POST

<http://www.lib.utexas.edu/books/landsapes/index.php> Free service. Rare, fragile, hard-to-find, public domain documents covering various topics about the landscape of Texas. Includes the Texas Geological Survey from 1887 until 1894.

USGS TAPESTRY OF TIME AND TERRAIN <http://tapestry.usgs.gov> The CCGS is donating to all of the 5th and 6th grade schools in the Coastal Bend. Check it out--it is a spectacular map. You might want to frame one for your own office. The one in my office has glass and a metal frame, and It cost \$400 and it does not look as good as the ones we are giving to the schools.

FREE TEXAS TOPOS'S <http://www.tnris.state.tx.us/digital.htm> these are TIFF files from your state government that can be downloaded and printed. You can ad them to SMT by converting them first in Globalmapper. Other digital data as well.

FREE NATIONAL TOPO'S [http://store.usgs.gov/b2c_usgs/b2c/start/\(xcm=r3standardpitrex_prd\)/.do](http://store.usgs.gov/b2c_usgs/b2c/start/(xcm=r3standardpitrex_prd)/.do) go to this webpage and look on the extreme right side to the box titled TOPO MAPS DOWNLOAD TOPO MAPS FREE.

<http://www.geographynetwork.com/> Go here and try their top 5 map services. My favorite is 'USGS Elevation Date.' Zoom in on your favorite places and see great shaded relief images. One of my favorites is the Great Sand Dunes National Park in south central Colorado. Nice Dunes.

<http://antwrp.gsfc.nasa.gov/apod/asropix.html> Astronomy picture of the day--awesome. I click this page everyday.

<http://www.spacimaging.com/gallery/ioweek/iow.htm> Amazing satellite images. Check out the gallery.

<http://www.ngdc.noaa.gov/seg/topo/globegal.shtml> More great maps to share with kids and students.

www.ccgeo.org Don't forget we have our own we page.

<http://terra.nasa.gov/gallery/> Great satellite images of Earth.

www.ermaper.com They have a great free downloadable viewer for TIFF and other graphic files called ER Viewer.

<http://terrasrver.com> Go here to download free aerial photo images that can be plotted under your digital land and well data. Images down to 1 meter resolution, searchable by Lat Long coordinate. Useful for resolving well location questions.

TYPE LOGS OF SOUTH TEXAS FIELDS by Corpus Christi Geological Society

NEW (2009-2010)TYPE LOGS IN RED; ***2011;**

lost now found

ARANSAS COUNTY

Aransas Pass/McCampbell Deep
Bartell Pass
Blackjack
Burgentine Lake
Copano Bay, South
Estes Cove
Fulton Beach
Goose Island
Half Moon Reef
Nine Mile Point
Rockport, West
St. Charles
Tally Island
Tract 831-G.O.M. (offshore)
Virginia

BEE COUNTY

Caesar
Mosca
Nomanna
Orangedale(2)
Ray-Wilcox
San Domingo

Tulsita Wilcox

Strauch_Wilcox

BROOKS COUNTY

Ann Mag
Boedecker
Cage Ranch
Encintas
ERF
Gyp Hill

Gyp Hill West

Loma Blanca
Mariposa
Mills Bennett
Pita
Tio Ayola
Tres Encinos

CALHOUN COUNTY

Appling
Coloma Creek, North
Heyser
Lavaca Bay
Long Mott
Magnolia Beach
Mosquito Point
Olivia
Panther Reef
Powderhorn
Seadrift, N.W.
Steamboat Pass
Webb Point
S.E. Zoller

CAMERON COUNTY

Holly Beach
Luttes
San Martin (2)
Three Islands, East

Vista Del Mar

COLORADO COUNTY

E. Ramsey
Graceland N. Fault Bik
Graceland S. Fault Bik

DEWITT COUNTY

Anna Barre
Cook
*******Nordheim**
Smith Creek
Warmleys

Yorktown, South

DUVAL COUNTY

DCR-49
Four Seasons
Good Friday
Hagist Ranch
Herbst
Loma Novia
Petrox

Seven Sisters
Seventy Six, South
Starr Bright, West

GOLIAD COUNTY

Berclair
North Blanca
Bombs
Boyce
Cabeza Creek, South
Goliad, West
St Armo

HIDALGO COUNTY

Alamo/Donna
Donna
Edinburg, West
Flores-Jeffress
Foy
Hidalgo

LA Blanca

McAllen& Pharr
McAllen Ranch
Mercedes
Monte Christo, North
Penitas
San Fordyce
San Carlos
San Salvador
S. Santallana
Shary
Tabasco
Weslaco, North
Weslaco, South

JACKSON COUNTY

Carancahua Creek
Francitas
Ganado & Ganado Deep
LaWard, North
Little Kentucky

Maurbro

StewartSwan Lake

Swan Lake, East
Texana, North
West Ranch

JIM HOGG COUNTY

Chaparosa
Thompsonville,N.E.

JIM WELLS COUNTY

Freebom
Hoelsher
Palito Blanco
Wade City

KARNES COUNTY

Burnell
Coy City
Person
Runge

KENEDY COUNTY

Candelaria
Julian
Julian, North
Laguna Madre
Rita

KLEBERG COUNTY

Alazan
Alazan, North
Big Caesar
Borregos
Chevron (offshore)
Laguna Larga
Seeligson
Sprint (offshore)

LA SALLE COUNTY

*****Pearsall**

LAVACA COUNTY

Hallettsville
Hope
Southwest Speaks
Southwest Speaks Deep
LIVE OAK COUNTY

Atkinson

Braslau
Chapa
Clayton
Dunn

Harris
Houdman
Kittie West-Salt Creek
Lucille
Sierra Vista

Tom Lyne
White Creek

White Creek, East

MATAGORDA COUNTY

Collegeport

MCMULLEN COUNTY

Arnold-Weldon

Brazil
Devil's Waterhole
Hostetter
Hostetter, North

NUECES COUNTY

Agua Dulce (3)
Arnold-David
Arnold-David, North
Baldwin Deep
Calallen
Chapman Ranch
Corpus Christi, N.W.
Corpus Christi West C.C.
Encinal Channel
Flour Bluff/Flour Bluff, East
GOM St 9045(offshore)
Indian Point
Mustang Island
Mustang Island, West
Mustang Island St.
889S(offshore)
Nueces Bay/Nueces Bay
West

Perro Rojo

Pita Island
Ramada
Redfish Bay
Riverside
Riverside, South
Saxet
Shield
Stedman Island

Turkey Creek

REFUGIO COUNTY

Bonnieview/Packery Flats
Greta
La Rosa
Lake Pasture
Refugio, New

Tom O'Connor

SAN PATRICIO COUNTY

Angelita East

Commonwealth
Encino
Enos Cooper
Geronimo
Harvey
Hiberia
Hodges
Mathis, East
McC Campbell Deep/Aransas Pass
Midway
Midway, North
Odem

Plymouth

Portilla (2)

Taft
Taft, East
White Point, East

STARR COUNTY

El Tanque
Garcia
Hinde
La Reforma, S.W.

Lyda

Ricaby
Rincon
Rincon, North
Ross
San Roman
Sun
Yturria

VICTORIA COUNTY

Helen Gohike, S.W.
Keeran, North
Marcado Creek
McFaddin
Meyersville
Placedo

WEBB COUNTY

Aquilares/Glen Martin
Big Cowboy
Bruni, S.E.
Cabezon
Carr Lobo
Davis
Hirsch
Juanita

Las Tiendas

Nicholson

O'Hem

Olmitos

Tom Walsh

WHARTON COUNTY

Black Owl

WILLACY COUNTY

Chile Vieja

La Sal Vieja

Paso Real

Tenerias

Willamar

ZAPATA COUNTY

Benavides

Davis, South

Jennings/Jennings, West

Lopeno

M&F

Pok-A-Dot

ZAVALA COUNTY

El Bano

Call Coastal Bend Geological Library, Maxine: 361-883-2736
1 log -- \$10 each, 5-10 logs \$9 each and 10 + logs \$8.00 each – plus postage

OIL MEN

TALES FROM THE SOUTH TEXAS OIL PATCH

DVD

MEMBER PRICE \$25

NONMEMBER \$30

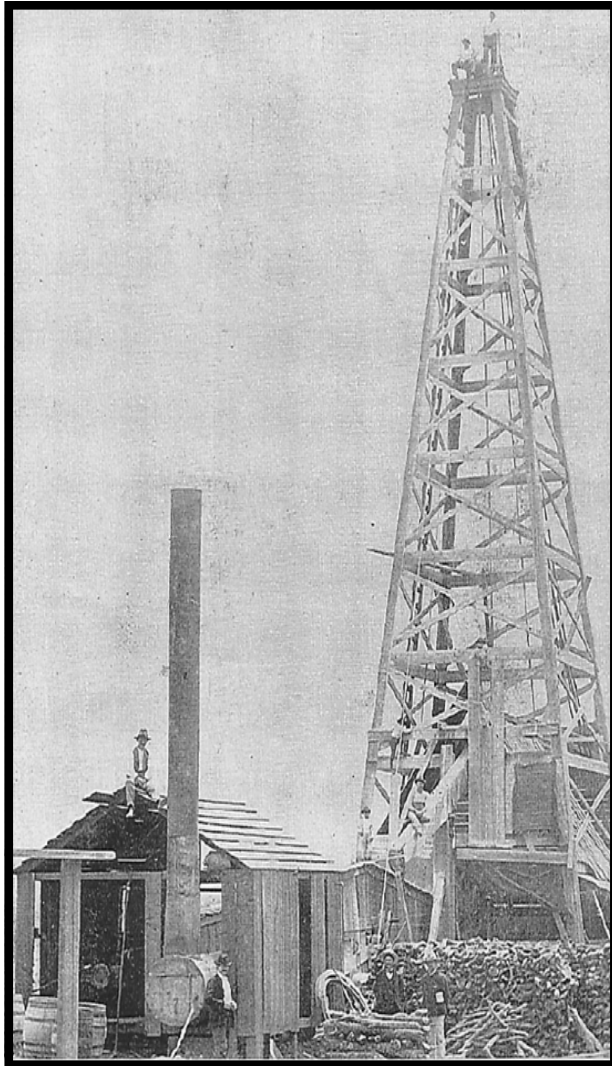


To Order DVD

Sebastian Wiedmann

swiedmann@braytoncc.com

If mailed add \$5



Corpus Christi Geological Society
C/O Javelina Press
P. O. Box 60181
Corpus Christi, TX 78466

Order Form

Mail order form for Wooden rigs-Iron Men. The price is \$75 per copy, which includes sales tax, handling, and postage

Name _____

Address _____

City, State, Zip _____

No. of books _____ Amount enclosed _____

Send to Corpus Christi Geological Society Book Orders

P. O. Box 60181

Corpus Christi, TX. 78466 Tax exempt# if applicable _____

Wooden Rigs—Iron Men

The Story of Oil & Gas in South
Texas

By Bill & Marjorie K. Walraven

Published by the
Corpus Christi Geological Society

david becker
geologist

David Becker
exploration
geologist

o: (361) 884-3613
f: (888) 869-2011

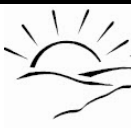
600 leopard st. ste 706
corpus christi, tx 78473

dkbecker1137@sbcglobal.net

 **Bief Seis, Inc.**
Geophysical Consulting

David Biersner, President
19446 Arrowood Place
Garden Ridge, Tx 78266
Cell: 281.744.7457
E-Mail: bierseis@yahoo.com

Field Quality Control
Program Management
Permit Management
Seismic Line Clearing
Supervision

 **Dawn S. Bissell**
Geoscientist

Advent Geoscience Consulting, LLC

Phone: 361-960-2151
Fax: 961-854-2604
Email: bissells@swbell.net

253 Circle Drive
Corpus Christi, TX 78411
Home: 361-854-2635

James L. Claughton
CONSULTING GEOLOGIST

Office | 361-887-2991
Fax | 361-883-4790
Cell | 361-960-2014
clausoie@sbcglobal.net

615 North Upper Broadway
Suite 1935
Corpus Christi, Texas
78401-0779

TEXAS LONE STAR  **OIL Exploration & GAS Production**

PETROLEUM CORPORATION


JEFF COBBS
President - Geologist

615 Leopard St., Suite 336 Office (361) 883-2911
Corpus Christi, Texas 78401-0610
jc@tlspc.com Cell (361) 960-0530

Jim Collins
Geoscientist



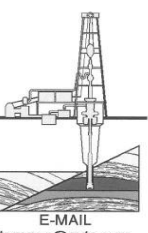
361.537.4034
jim@gulfcoastgas.com

 **SV Energy Company, LLC**
Conventional Thinking. Unconventional Results.

Frank G. Cornish
Consulting Geologist
615 N. Upper Broadway, Suite 1770
Corpus Christi, TX 78401
frank.cornish@gmail.com

361-883-0923 (o)
1-800-510-5810 (f)
361-563-9184 (m)

TOM DAVIDSON
GEOLOGIST



28550 IH-10 WEST SUITE #4
BOERNE, TEXAS 78006

BUS: (210) 844-8963
RES: (830) 981-5883
FAX: (830) 981-5567
CEL: (210) 844-8963

E-MAIL
tomgeo@gvtc.com

SeismicVentures

Sara Davis
Business Development Manager
s_davis@seismicventures.com


Seismic Ventures, LLC
4805 Westway Park Blvd.
Suite 100
Houston, Texas 77041

tel: 281-240-1234 (x3206)
cel: 713-256-8737
fax: 281-240-4997
www.seismicventures.com

ONE APEX ENERGY, INC.

CHRISTIAN DOHSE
Consulting Geologist

(361) 877-3431
CHRISTIAN.DOHSE@GMAIL.COM
CORPUS CHRISTI, TX



Tommy Dubois
Geologist

2627 CR 312
Yoakum, Texas 77995

361-215-0223 tvdubois@yahoo.com


Enrique (Rick) Garza
Operation Supervisor
US Land

 **Global Geoscience Solutions**

Rick.Garza@GlobalGeophysical.com
DIRECT +1 713-908-7428
WORK +1 361-701-6480
FAX +1 713-808-7928
13927 South Gessner Road
Missouri City, Texas 77489 USA
www.GlobalGeophysical.com

GISLER BROTHERS LOGGING Co., Inc.

P.O. BOX 485
106 E. MAIN RUNGE, TX 78151



Wes Gisler
Bus. (830) 239-4651
Mobile (361) 676-1369
Home (830) 239-4914
Direct (830) 239-4693
wes@gislerbrotherslogging.com


Robert Graham
President
grexploration@gmail.com

Phone 361-882-7681
Fax 361-882-7685
Cell 361-774-3635


GrX Inc.
Exploratory Prospects & Production Development

Mail: P. O. Box 1843
Corpus Christi, Texas
78403-1843

Office: 606 N. Carancahua, Ste. 610
Corpus Christi, Texas
78401-0634



RAY GOVETT, Ph. D.
CONSULTING GEOLOGIST
361-855-0134

 **HART EXPLORATION, LLC.**

RICK HART
Geologist / Owner

P.O. Box 729
Coldspring, Texas 77331


Cell: 512-626-3053
Email: hartexploration@aol.com

RIVIERA EXPLORATION, LLC

H. TONY HAUGLUM
President

600 LEOPARD ST.
SUITE 1704
CORPUS CHRISTI
TEXAS 78401

PHONE 361.884.1811
FAX 361.884.8071
E-MAIL THAUGLUM@SWBELL.NET




BRENT F. HOPKINS
PRESIDENT AND CEO
GEOLOGIST

SUEMAUR EXPLORATION & PRODUCTION, LLC

OFFICE: (361) 884-8824
FAX: (361) 884-9623
RES: (361) 643-8373
CELL: (361) 215-4855
Email: brenth@suemaur.com


FROST BANK PLAZA
802 N. CARANCAHUA, SUITE 1000
CORPUS CHRISTI, TEXAS 78401-0015

 **Eog resources**

Randy Lambert
Geological Advisor

EOG Resources, Inc.
539 N. Carancahua Suite 900
Corpus Christi, TX 78401-0908
Direct: (361) 887-2681

Fax: (361) 844-1546
randy_lambert@eogresources.com

 **LMP**

Louis R. Lambiotte
Geologist

LMP Petroleum, Inc.
615 N. Upper Broadway, Suite 1770
Corpus Christi, TX 78477
Tel: (361) 883-0923
Fax: (361) 883-7102
E-mail: geology@LMPexploration.com

James R. Jones
Geologist

7434 Long S Drive
Corpus Christi, TX 78414
361-779-0537
jrjones5426@aol.com

"The Mud Stops Here"




LUKE KINGSBURY
Field Engineer - Gulf Region

STRATA-VANGUARD® - STRATA-FLEX® - FRAC-ATTACK®
STRATA-TROL® - FOAM-BLAST® - STRATA-LUBE®

P.O. Box 272
Crowley, LA 70527-0272
Toll Free 1-888-856-0001
www.stratacontrol.com

Office (337) 785-0000
Fax (337) 785-0004
Mobile (361) 739-9667
Email luke@stratacontrol.com



Vicki Marlett
Sr. Account Manager

972-690-1122 x132
Fax: 972-690-1163
Cell: 214-557-0815
e-mail: vmarlett@geotrace.com

2435 N. Central Expressway, Suite 1100
Richardson, Texas 75080
www.geotrace.com

CURTIS R. MAYO
GEOLOGICAL CONSULTANT

Reserve Analysis Prospect Evaluation
Expert Witness Prospect Generation

Fredericksburg, Texas 78624
Office: 830.992.2938 Cell: 830.765.0628 E-Mail: cmayo@crscs.net

HOLLIMON OIL CORPORATION

ARMANDO (MANDY) MEDINA
EXPLORATION MANAGER

8610 N. NEW BRAUNFELS
SUITE 705
SAN ANTONIO, TEXAS 78217

amedina@hollimonoil.com
OFF: (210) 829-8822
FAX: (210) 829-8833



Dennis O. Moore
Formation Evaluation
Wireline Systems - Southern Area

800 N. Shoreline Blvd., Suite 700 N. Tower
Corpus Christi, Texas 78401-3771
Office: 361-883-1561
Fax: 361-883-4390
Cell: 361-816-5144
Email: dennis.moore@bakerhughes.com

www.bakerhughes.com



J. Mark Miller
President

Phone (361) 883-7700
Fax (361) 883-7701
mark@millersmithgas.com

545 N. Upper Broadway
Suite 400
Corpus Christi, Texas 78476

Wellhead Gas Marketing

Mailing Address
615 Leopard, Ste. 640
Corpus Christi, Texas 78401-0641
361.882.7888 phone
361.882.7889 fax
361.946.2581 mobile

Contact Address
1701 Southwest Parkway, Ste. 109
College Station, Texas 77840
866.946.2581 phone
866.946.2580 fax


pmueller@muclrexp.com
www.muclrexp.com



J. Paul Mueller, Jr.
President


Patrick Nye
President
patrick@nyexp.us

Office: (361) 452-1435
Cell: (361) 658-1089
Res: (361) 238-2146



NYE
Exploration & Production, LLC

802 N. Carancahua, Suite 1840
Frost Bank Plaza
Corpus Christi, TX 78401
www.nyexp.us




Herradura Petroleum, Inc.
JEFF OSBORN
Geologist

711 N. Carancahua, Ste. 1750
Corpus Christi, Texas 78475
e-mail: jeff@herradurapetroleum.com

Office: 361-884-6886
Fax: 361-884-9102
Cell: 361-537-2349

SWIFT ENERGY COMPANY



RICHARD M. PARKER P.G.
Manager / Geological Operations
TBPG License # 6056

(281) 874-2585
Mobile # 1 (713) 724-4380
Mobile # 2 (713) 206-3158
Home: (281) 412-0745

16825 NORTHCHASE DR., SUITE 400
HOUSTON, TEXAS 77060 E-mail: richard.parker@swiftenergy.com



Beth Priday
Senior Geologist

VirTex Operating Co., Inc.

615 North Upper Broadway
Suite 525, WF168
Corpus Christi, Texas 78477
Bus (361) 882-3046
Fax (361) 882-7427
Mobile: (361)443-5593 • E-mail: bpriday@virtexoperating.com

Minerals Exploration and Mining
Uranium In Situ Leach

Richard M. Rathbun, Jr.
Certified Professional Geologist 9544 / AIPG
Texas Board of Prof. Geoscientists / Lisc. No. 4679

921 Barracuda Pl.
Corpus Christi, Texas 78411

(361) 903-8207
rathbunassoc@msn.com



Weatherford

Wireline Services

Weatherford International Ltd.
401 E. Sonterra Blvd., Suite 1
San Antonio, Texas 78258
USA

Sam Roach
US Guld Coast Wireline Sales

+1.210.930.7588 Direct
+1.210.930.7610 Fax
+1.210.241.2463 Mobile

sam.roach@weatherford.com
www.weatherford.com


First Rock, Inc.

RGR Production First Rock I, LLC

Gregg Robertson

Main Office:
600 Leopard, Suite 1800
Corpus Christi, TX 78401
361-884-0791

Field Office:
5574 FM 1344
Floresville, TX 78114
830-484-1122



ION
GEOVENTURES®

Alvin Rowbatham
Sales, Gulf of Mexico

Main +1 713 789 7250
Direct +1 281 781 1065
Fax +1 713 789 7201
Mobile +1 832 372 2366
alvin.rowbatham@iongeo.com

2105 CityWest Blvd. | Suite 900
Houston, TX 77042-2839 USA

TOM SELMAN
selmanlog.com
tselman@selmanlog.com

Ofc. (432) 563-0084
(800) 578-1006
Cell (432) 288-2259



SELMAN
AND ASSOCIATES, LTD.

GEOLOGICAL CONSULTING / SURFACE LOGGING SERVICES

P.O. Box 61150 Midland, TX 79711 4833 Saratoga #624 Corpus Christi, TX 78413 P.O. Box 2993 Rock Springs, WY 82902



Petrophysics, Inc.
Velocity Surveys - Synthetics - Sonic Log Data

Joe H. Smith
President

713.560.9733
jsmith@petrophysics.com
www.petrophysics.com

P.O. Box 863323
Plano, Texas 75086

Crossroads Exploration

Gloria D. Sprague
Geologist

Timpson Building
189 N. First Street, Suite 111
Timpson, Texas 75975

Office: (936) 254-3600
Fax: (936) 254-3602
Mobile: (936) 488-9428
E-Mail: gsprague@usawide.net

Charles A. Sternbach, Ph.D.
President

Star Creek Energy Company
Oil and Gas Exploration

800 Wilcrest Drive, Suite 230
Houston, Texas 77042
office: 281.679.7333
cell: 832.567.7333
carbodude@gmail.com



www.starckenergy.com

THOMAS W. SWINBANK
CERTIFIED PETROLEUM GEOLOGIST
PRESIDENT

STRIKE OIL & MINERALS CORP.

P.O. Box 1399
GEORGETOWN, TEXAS 78627

PHONE/FAX 512-863-7519
HOME 512-863-7903
CELL 512-876-9585

Dennis A. Taylor
Vice President of Geology
dennis@amshore.com



AMERICAN SHORELINE, INC.
AMSHORE TEXAS WIND, LLC

802 N. Carancahua Street, Suite 1250
Corpus Christi, Texas 78401-0019
www.amshore.com

Off: (361) 888-4496
Fax: (361) 888-4588
Direct Line: (361) 844-6722
Cell: (972) 672-9916

Environmental Exploration & Production

JEANIE TIMMERMANN
GEOSCIENTIST
TX LICENSE #2289

7214 Everhart #9 (361) 991-7451
Corpus Christi, TX 78413 jtimmermann74@msn.com



**Davis
Petroleum
Corp.**

www.davispetroleumcorp.com

Jim Travillo
Senior Geoscientist

1330 Post Oak Boulevard
Suite 600
Houston, Texas 77056

Direct: 713.439.6773
Main: 713.626.7766
Fax: 713.626.7775
Cell: 713.823.9332

jtravillo@davcos.com



10001 Richmond Avenue
Houston, TX 77042-4299
P.O. Box 2469 (77252-2469)
Tel: 713-689-6552
Fax: 713-689-1089
Mobile: 281-615-6827
CTutt@slb.com

Chris O. Tutt
Sales Representative
NAM Sales

SEBASTIAN P. WIEDMANN
GEOSCIENTIST

WILSON PLAZA WEST OFFICE (361) 884-4084
606 N. CARANCAHUA, SUITE 500 FAX (361) 882-7816
CORPUS CHRISTI, TEXAS 78401 MOBILE (361) 946-4430
swiedmann@braytoncc.com



Dave Willis
Onshore Sales

Main +1 713 789 7250
Direct +1 281 781 1035
Mobile +1 281 543 6189
Fax +1 713 789 7201
dave.willis@iongeo.com

2105 CityWest Blvd. | Suite 900
Houston, TX 77042-2839 USA



10001 Richmond Avenue
Houston, Texas 77042-4299
P.O. Box 2469 (77252-2469)
Tel: 713-689-2757
Fax: 713-689-1089
Mobile: 281-658-5263
CYanez@slb.com

Charles Yanez
Manager
Shared Value Optimization



WILLIAM A. WALKER, JR.
Certified Petroleum Geologist
bwalker@stalkerenergy.com

1717 WEST 6th STREET, STE. 230 • AUSTIN, TX 78703
2001 KIRBY DR., STE. 950 • HOUSTON, TX 77019

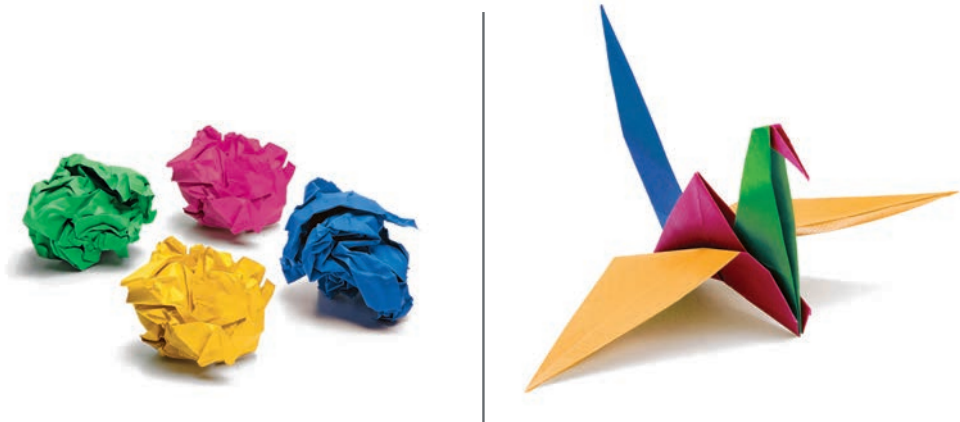
AUSTIN

512.457.8711
cell: 512.217.5192
fax: 512.457.8717

HOUSTON

713.522.2733
cell: 512.217.5192
fax: 713.522.2879

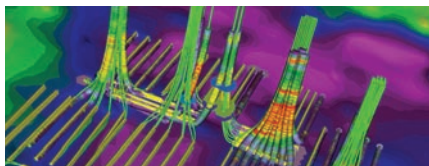
YOUR CARD COULD BE HERE!!!
\$30 FOR 10 ISSUES
AD PRICES PRO-RATED
EMAIL CHRISTIAN AT
CHRISTIAN.DOHSE@GMAIL.COM



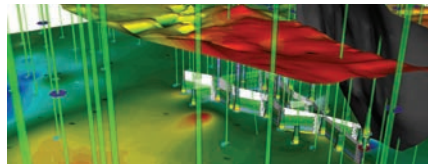
Build reservoir analyses. Watch your potential soar.

IHS PETRA® provides a unique solution to integration, analysis and manipulation of geological, geophysical, petrophysical and engineering information. With easy data loading and a powerful and flexible database, you can both effectively manage projects and quickly visualize results using interactive mapping, cross sections, log plots, cross plots and more—all within a single system. Superior technical support and proven integration of customer enhancements make PETRA the highest-ranked¹ geological interpretation tool in the E&P industry for both reliability and accuracy and ease of use. **Energy information, refined.**

¹Welling & Company Geological & Geophysical Software Study, 2009



Directional Well Module



3D Visualization Module

ihs.com/petra-ccgs-1



The Source
for Critical Information and Insight

©2010 IHS Inc. All rights reserved.