

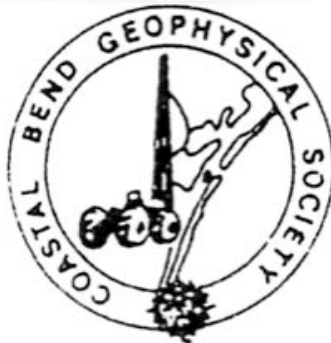
BULLETIN

**Corpus Christi
Geological Society**



and

**Coastal Bend
Geophysical Society**



**January
2015
ISSN 0739 5620**

American Shoreline, Inc.



Specializing in
Oil & Gas Exploration
& Wind Energy

Compliments of

Paul Strunk, President

Jena Nelson, VP Finance & Administration

Dennis Taylor, VP Geology

802 N. Carancahua
Frost Bank Plaza, Suite 1250
Corpus Christi, Texas 78401
(361) 888-4496

www.amshore.com

SPONSORS



Austin Office:

1717 W. 6th Street, Ste 230
Austin, Texas 78703
512.457.8711

Contact: Bill Walker, Jr.
bwalker@stalkerenergy.com

Houston Office:

2001 Kirby Drive, Suite 950
Houston, Texas 77019
713.522.2733

Contact: Todd Sinex
tsinex@stalkerenergy.com

www.stalkerenergy.com



LMP PETROLEUM, INC.

EXPLORING SOUTH TEXAS

615 N. Upper Broadway
Suite 1770
Wells Fargo Bank Building
Corpus Christi, Texas 78401-0773

361-883-0923
Fax: 361-883-7102
E-mail: geology@lmpexploration.com

WELLSITE GEOSCIENCE SERVICES



**When time is money,
Wellsite Geoscience is
money well spent.**

Whether you're exploring a basin, producing a well or completing a shale play, time is money. That's why Weatherford Laboratories brings a suite of formation evaluation technologies right to the wellsite. Utilizing mud gas and cuttings, these technologies provide detailed data on gas composition, organic richness, mineralogy and chemostratigraphy in near real time. As a result, operators now have an invaluable tool to assist with sweet spot identification, wellbore positioning, completion design and hydraulic fracturing. We call it Science At the WellSite. You'll call it money well spent.

SCIENCE AT THE WELLSITE™
www.weatherfordlabs.com

Formation Evaluation | Well Construction | Completion | Production

©2013 Weatherford. All rights reserved.





CORPUS CHRISTI GEOLOGICAL SOCIETY

P.O. BOX 1068 * C.C. TX. 78403

2014-2015

www.ccgeo.org

OFFICERS

President	Leighton Devine	361-510-8872	ldevine@suemaur.com
President Elect			
Vice President	Randy Bissell	361-885-0113	randyb@headington.com
Secretary	Allison Corcoran	361-882-8400	allison@aaoperating.com
Treasurer	Zachary Corcoran	361-658-5850	zcorcoran1982@gmail.com
Past President	Bob Critchlow	361-882-3046	bcritchlow@virtexoperating.com
Councilor I	Rick Paige	361-884-8824	rickp@suemaur.com
Councilor II	Mike Lucente	361-883-0923	mikel@impexploration.com

AAPG DELEGATES

2006-14	Dennis Moore	361-886-5144	dennis.moore@bakerhughes.com
---------	--------------	--------------	--

EDITORS

Bulletin Editor	Marian Wiedmann	361-855-2542	wiedgulf@aol.com
Bulletin Tech. Editor	Susan Stone	361-739-4759	stonesciences@yahoo.com
Web Master	Chris Davis	361-537-1508	cdavis@spurfire.com

GEOLOGICAL SOCIETY COMMITTEES & CHAIRPERSONS

Advertising	Sara Miller	361-887-2691	sara_miller@eogresources.com
Business Cards	Christian Dohse	361-877-3431	christian.dohse@gmail.com
Arrangements	Allison Corcoran	361-888-8288	allison@aaoperating.com
Bloodmobile	Mike Lucente	361-883-0923	mikel@impexploration.com
Earth Day	Alan Costello	361-888-4792	acostello@royalcctx.com
Continuing Ed.	Stephen Thomas	361-888-8880	sthomas@virtexoperating.com
Education & Scholarship	Dawn Bissell	361-960-2151	bissells@swbell.net
Fishing Tournament	Leighton Devine	361-882-8400	ldevine@suemaur.com
History	Ray Govett	361-855-0134	ray30@hotmail.com
Membership	Dorothy Jordan	361-885-0110	dorothyj@headington.com

Type Logs	Randy Bissell	361-885-0113	randyb@headington.com
University	Frank Cornish	361-883-0923	frank.cornish@gmail.com
Liaison	Zach Corcoran	361-902-2857	zcorcoran1982@gmail.com



COASTAL BEND GEOPHYSICAL SOCIETY
P.O. BOX 2741 * C.C. TX. 78403
2014-2015

OFFICERS

President	Lonnie Blake	361-883-2831	lonnie_blake@eogresources.com
Vice President	Bob Witherspoon	361-884-8824	bobw@suemaur.com
Secretary/ Treasurer	Matt Hammer	361-888-4792	mhammer@royalcctx.com

COMMITTEES AND CHAIRPERSONS

Membership	Dorothy Jordan	361-885-0110	dorothyj@headington.com
	Randy Bissell	361-885-0113	randyb@headington.com
Golf Chairman	Fermin Munoz	361 960-1126	fmunoz04@hotmail.com
Scholarship/ Chairman	Ed Egger	361-947-8400	edegger69@gmail.com
Education	Vicki Marlett	214-557-0815	vmarlett@geotrace.com

**Visit the geological
Web site at
www.ccgeo.org**

TABLE OF CONTENTS

Officers, Committees, and Chairpersons, CCGS, CBGS.....	2 & 3
Blood Drive.....	5
Calendar of Meetings and Events.....	6 & 7
CCGS President's Letter.....	9
CBGS President's Letter.....	11
Luncheon Meeting Announcement.....	13
CCGS Scholarship Awards.....	16,17
Notes from CCGS Scholarship Recipients.....	19
Scholarship Contributions.....	21
Advertise in the bulletin.....	27
Geo Link Post.....	28
Type Logs of South Texas Fields.....	29
Order OIL MEN DVD.....	30
Wooden Rigs Iron Men.....	31
Professional Directory.....	32

*****BLOOD DRIVE*****

THE BLOODMOBILE – IN JANUARY, 2015
WILL BE AT SOME CONVENIENT LOCATIONS
PLEASE CALL 855-4943 for those locations or go to
www.coastalbendbloodcenter.com



*Plan to be Healthy this New Year – and Go out and
Give some Blood!!*

ATTENTION!!!

When you give blood: They have us listed as C.C. Geological Society. Our number with them is 4254 & it would be helpful if you can give them that number also.

This message approved by Mike Lucente

CCGS/CBGS JOINT MEETING SCHEDULE 2014-2015

September 2014							October 2014							November 2014						
S	M	T	W	Th	F	S	S	M	T	W	Th	F	S	S	M	T	W	Th	F	S
	1	2	3	4	5	6				1	2	3	4							1
7	8	9	10	11	12	13	5	6	7	8	9	10	11	2	3	4	5	6	7	8
14	15	16	17	18	19	20	12	13	14	15	16	17	18	9	10	11	12	13	14	15
21	22	23	24	25	26	27	19	20	21	22	23	24	25	16	17	18	19	20	21	22
28	29	30					26	27	28	29	30	31		23	24	25	26	27	28	29
														30						

Sept. 10, 2014
5:30p.m.—8:30p.m.
Kickoff BBQ
Howard’s BBQ & Catering
1002 Antelope Street

Oct. 15—11:30a.m.—1:00p.m.
Speaker: Ken Williams—
Halliburton.
“Barostratigraphy”

Nov. 19—11:30a.m.—1:00p.m.
Speaker: Tony Hauglum--Rivera
Exploration. “Eagleford Update”

December 2014							January 2015							February 2015						
S	M	T	W	Th	F	S	S	M	T	W	Th	F	S	S	M	T	W	Th	F	S
	1	2	3	4	5	6					1	2	3	1	2	3	4	5	6	7
7	8	9	10	11	12	13	4	5	6	7	8	9	10	8	9	10	11	12	13	14
14	15	16	17	18	19	20	11	12	13	14	15	16	17	15	16	17	18	19	20	21
21	22	23	24	25	26	27	18	19	20	21	22	23	24	22	23	24	25	26	27	28
28	29	30	31				25	26	27	28	29	30	31							

Dec. 10—11:30a.m.--1:00p.m.
Speaker: Woodson Godfrey—
PaleoSource. “Distinguishing a
Resource Play

Jan. 21--11:30a.m.—1:00p.m.
Speaker: Lei Zhang—
Schlumberger. “Seismic
Inversion to Reservoir
Simulation”

Feb. 18—11:30a.m.—1:00p.m.
Speaker: Collegiate Month.
“Presentation by TAMUCC,
TAMUK and DelMar”

CCGS/CBGS JOINT MEETING SCHEDULE 2014-2015

March 2015							April 2015							May 2015						
S	M	T	W	Th	F	S	S	M	T	W	Th	F	S	S	M	T	W	Th	F	S
1	2	3	4	5	6	7				1	2	3	4						1	2
8	9	10	11	12	13	14	5	6	7	8	9	10	11	3	4	5	6	7	8	9
15	16	17	18	19	20	21	12	13	14	15	16	17	18	10	11	12	13	14	15	16
22	23	24	25	26	27	28	19	20	21	22	23	24	25	17	18	19	20	21	22	23
29	30	31					26	27	28	29	30			24	25	26	27	28	29	30
														31						

March 11—11:30a.m.—1:00p.m.
 Speaker: Fred Hilterman
 “Seismic Attribute analysis for
 the Gulf of Mexico”

April 15—11:30a.m.—1:00p.m.
 Speaker: Richard Adams—Carr
 Resources. The Lower Woodbine
 Organic Shale of Burlenson and
 Brazos Counties, Texas: Anatomy
 of a New “Old” Play

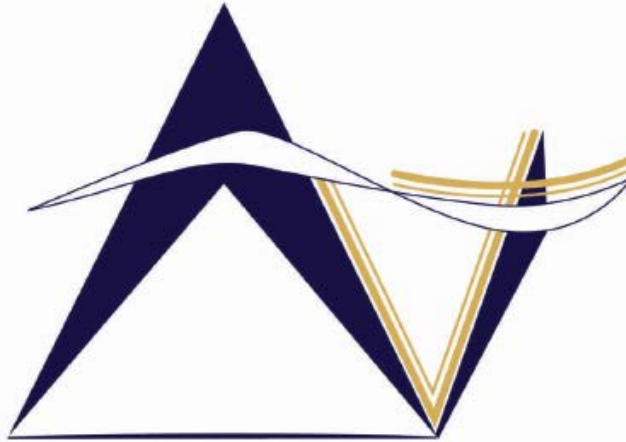
Distinguished Speaker--Mark
 Papa

Calendar of Meetings and Events

Calendar of Area Monthly Meetings

- Corpus Christi Geological/Geophysical Society.....Third Wed.—11:30a.m.
- SIPES Corpus Christi Luncheons..... Last Tuesday—11:30a.m.
- South Texas Geological Society Luncheons..... Second Wed—noon San Antonio
- San Antonio Geophysical Society Meetings..... Fourth Tuesday
- Austin Geological Society..... First Monday
- Austin Chapter of SIPES.....First Thursday
- Houston Geological Society Luncheons..... Last Wednesday
- Central Texas Section of Society of Mining, Metallurgy & Exp..... 2nd Tues every other month
 In San Antonio

SPONSORS



VirTex Operating Company, Inc.

*615 North Upper Broadway, Suite 525, Corpus Christi, Texas 78477
(361) 882-3046*

SEI®

Seismic Exchange, Inc.

Strategic Speculative Surveys
Geophysical Data Marketing & Management

YOUR
Full Service
National
Seismic Data
Marketing Firm

Corpus Marketing Contact:
Beau Patrick

Corpus Office
361.884.2936

CORPUS CHRISTI DALLAS DENVER HOUSTON NEW ORLEANS TULSA

11050 Capital Park Dr., Houston, Texas 77041 832.590.5100

www.seismicexchange.com



CCGS PRESEIDENT'S LETTER

Happy New Year from the CCGS! I trust everyone had a wonderful Christmas and is looking forward to 2015. We have a great schedule of events in 2015. This month on January 21st we will have Lei Zhang with Schlumberger down to give us a talk on "Seismic Inversion to Reservoir Simulation". Upcoming events are highlighted by "Collegiate Month" in February, former EOG Resources CEO Mark Papa in May, and the 6th Annual CCGS Fishing Tournament sometime in Late July. Once again I must thank all of our volunteers and sponsors that make all this possible.

As I write this letter it is 75 degrees down here in beautiful Corpus Christi, and oil is below \$60 a barrel. I love the warm weather, but a visit from Old Man Winter would be a welcome site. As for oil prices, I am still unsure what to expect. I believe we are near the bottom, but a look at the chart over the last week shows that prices are still in freefall. A quick glance at the worldwide oil consumption chart reassures me that whenever it turns we should see a nice rebound. But at what cost?

It will be interesting walking around the convention floor at NAPE next month. Fortunately, I have attended every winter NAPE over the last 14 years. Good times and bad. The energy in that room is tremendous. I find it amazing how you can get a feel for the upcoming year in just a day and a half. What will it be this year? I will walk in this year with a sense of guarded optimism.

Join us around 5:30pm Tuesday January 20th for Pint Nite at the Surf Club. Pete Graham with Schlumberger has agreed to sponsor, so come out join us for happy hour. We are constantly looking for good technical content for our bulletin. Please contact me if you have come across a paper you would like to share with the membership. The CCGS is *your* society.

Leighton L. Devine

CCGS President

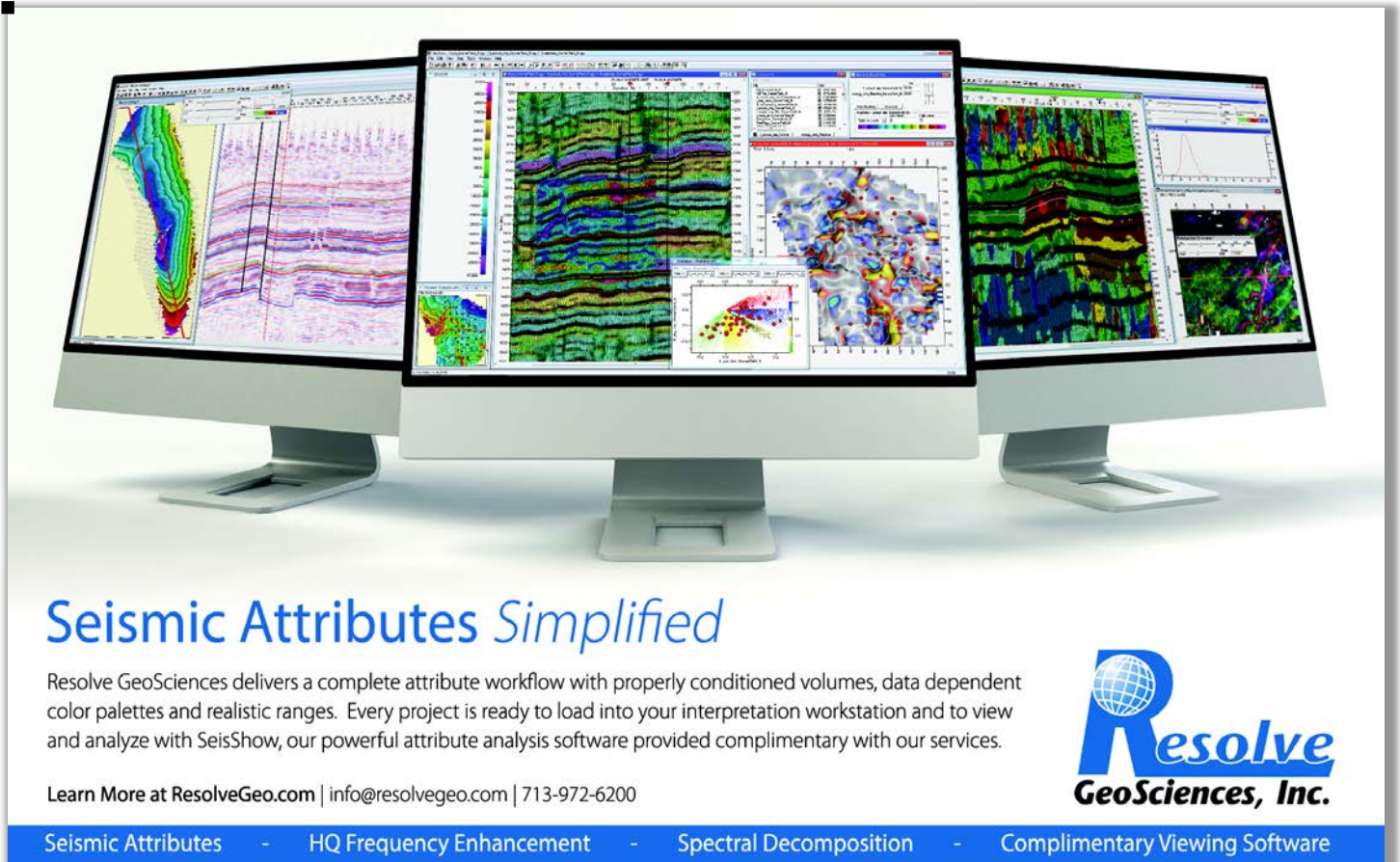
SPONSORS



**SUE MAUR
EXPLORATION &
PRODUCTION, LLC**

802 N Carancahua St
Suite 1000
Corpus Christi, TX 78401-0015
Phone: (361) 884-8824
Fax: (361) 884-9623

**Exploring Texas
since 1968**



Seismic Attributes *Simplified*

Resolve GeoSciences delivers a complete attribute workflow with properly conditioned volumes, data dependent color palettes and realistic ranges. Every project is ready to load into your interpretation workstation and to view and analyze with SeisShow, our powerful attribute analysis software provided complimentary with our services.

Learn More at ResolveGeo.com | info@resolvegeo.com | 713-972-6200

**Resolve
GeoSciences, Inc.**

Seismic Attributes - HQ Frequency Enhancement - Spectral Decomposition - Complimentary Viewing Software



CBGS PRESIDENT'S LETTER

News - Oil prices were headed down as I write this. Several seismic companies are moth balling seismic vessels/crews.

Business - none

Education -

SEG - New virtual course on Seismic Modeling, migration and velocity analysis

SEG - New virtual course: Geostatistics for Seismic

SEG - 23 Feb 2105: Rock Physics: Seismic Reflections of Rock Properties, Dr Jack Dvorkin

Parting Thought - The large print giveth, but the small print taketh away. Tom Waits, *Small Change*

Monthly O&G Statistics

Seismic Crews - US Onshore	Current Month	Last Month	Difference	(Per SEG/Seismic Crew Reports Survey)
	Onshore/Offshore	Onshore/Offshore		
	44/21	41/18	+6	
	Current Month	Last Month	Last Year - Monthly	(Per Texas RRC, last reported)
Texas Production	MMBO/BCF	MMBO/BCF	MMBO/BCF	
Oil	75.7	76.1	67	Aug
Gas	668	676	704	
	Current Month	Yr to date - 2014	Yr to date - 2013	Oct
Texas Drilling Permits	3,046	22,778	18,293	
Oil wells	885	6,709	5,827	
Gas wells	181	1,266	1,129	
Oil and Gas wells	1,829	3,849	10,618	
Other	34	176	162	
Total Completions	2,492	23,149	19,114	
Oil Completions	2,035	21,870	16,276	
Gas Completions	354	2,518	4,594	
New Field Discoveries	5	36	41	
Other	66	882	562	

Lonnie Blake—CBGS President

SPONSORS



Since 1905

Royal Exploration Company, Inc.

Bank of America

500 N. Shoreline Blvd. Suite 807 N
Corpus Christi, Texas 78471-1008

Alan Costello - Geologist Robert Rice - Geologist
Matt Hammer - Exploration Manager

Telephone: 361-888-4792 Fax: 361-888-8190

www.**GeoSteering**.com

281-573-0500
info@geosteering.com

Free introductory consultation
with modeling:
let us demonstrate whether
images or propagation resistivity
could add value to your well.

Personnel with degrees & 20+ years of oilfield experience

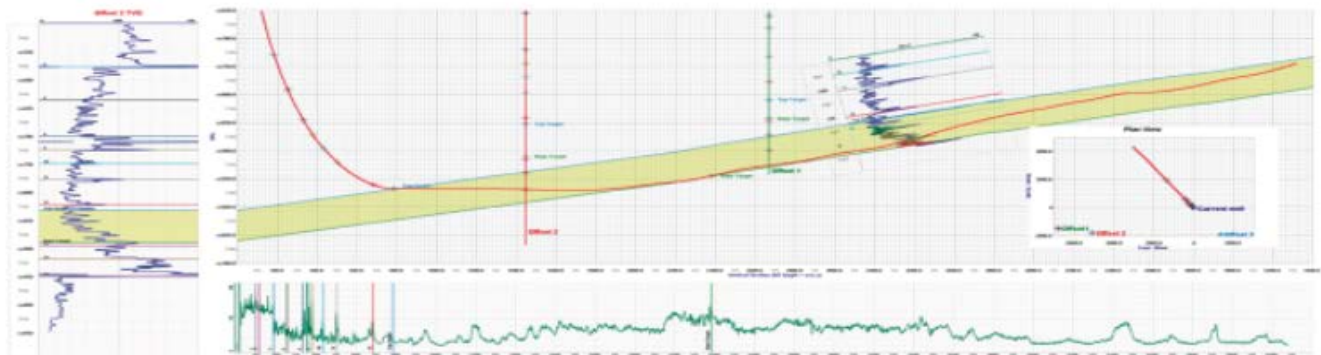
Proprietary software

TST interpretation for GR only jobs

**Image displays / interpretation for jobs with azimuthal GR,
resistivity or density**

**Resistivity modelling / interpretation for jobs with LWD
propagation resistivity**

Real-time (always)



Corpus Christi Geological Society & Coastal Bend Geophysical Society

LUNCHEON MEETING ANNOUNCEMENT

Wednesday, January 21, 2014

- Location:** Corpus Christi Town Club, 6th Floor (800 North Shoreline)
- Bar Sponsor:** TBA
- Student Sponsor:** Core Lab (Juan Cabasos) and the CCGS
- Time:** 11:30 a.m. Bar, Lunch follows at 11:45 a.m., Speaker at Noon.
- Cost:** \$25 (a \$3 surcharge if no reservation). No-shows will be billed.
- Reservations:** Please by Monday before – email allison@aaoperating.com
-

Luncheon Topic: A CASE STUDY: SEISMIC INVERSION TO RESERVOIR SIMULATION

Presented by Lei Zhang, Schlumberger

This presentation focuses on the reservoir modeling and simulation of Energy XXI's Gulf of Mexico Main Pass 61, Pod B Oil Field using integrated seismic elastic properties and discontinuity analysis to improve reservoir definition, lithology distribution, and to identify compartments and fluid flow pathways. The results provided key basis for improving the estimation of recoverable oil, field management decisions involving water injection and work-over completions, and the identification of un-swept potential for new drilling opportunities. The reservoir model integrated estimates of litho-fluid properties derived from pre-stack seismic inversion employing Bayesian classification methods. Reservoir boundaries and facies distributions were identified from shale and sand classification probabilities. Porosity distribution in the reservoir utilized acoustic impedance as a proxy. Seismic discontinuity analyses also provided a means to identify compartment boundaries, baffles and lithologic barriers to fluid flow. Together, the integration of these seismic properties improved the accuracy of the geologic model and provided better understanding of reservoir production mechanisms.

continued on page 14

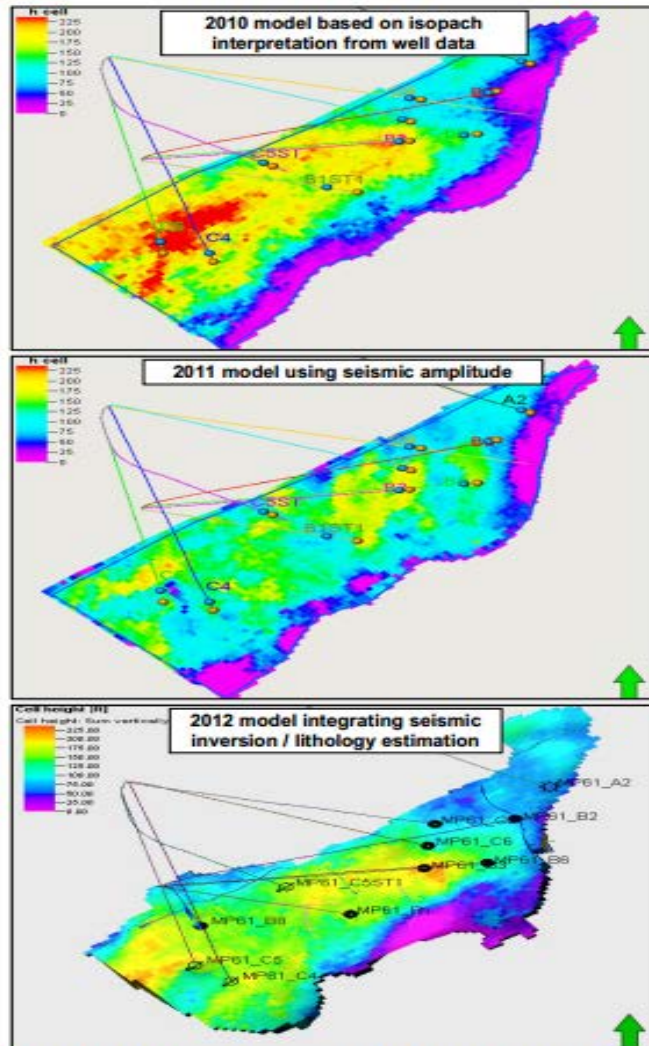


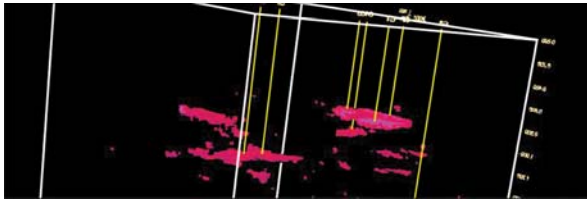
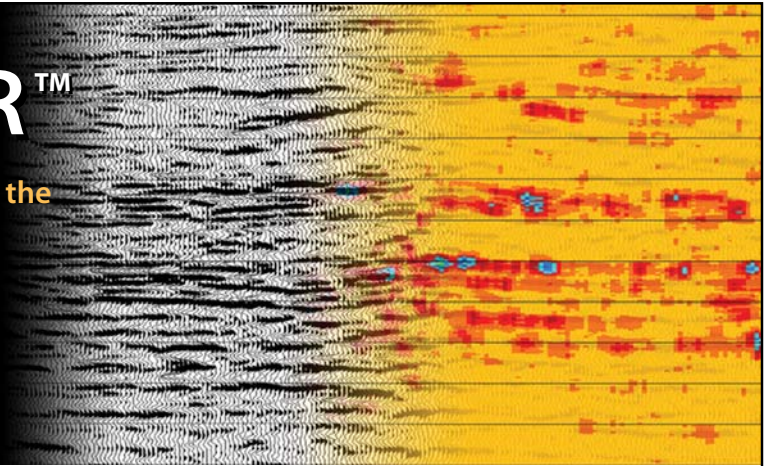
Figure 1: Comparison of net sand thickness from the 2010, 2011 and 2012 models. The upper model is obtained using contoured reservoir thicknesses from well data, the middle 2011 model utilizes seismic amplitude information (relative acoustic impedance) and the lower model integrates seismic inversion and the lithology prediction results.

About our Speaker: Lei Zhang is senior reservoir geophysicist, seismic reservoir characterization team manager for (Geosolutions Schlumberger) based in Houston, Texas, with more than 20 years of worldwide onshore and offshore industry experience and 9 years in Schlumberger. His oil and gas expertise includes 2D, 3D seismic interpretation, reservoir characterization studies and structural/stratigraphic modeling; comprehensive geophysical and geologic data interpretation in a 3D visualization environment; AVO study, rock physics study, well logging analysis, post-stack & pre-stack simultaneous AVO inversion, 4D inversion, multiple component inversion, multiple azimuth AVO inversion and multiple seismic attribute analysis; ability to evaluate technical risks relating to trap, reservoir, charge and seal, and combine them with engineering data to develop a comprehensive business picture for decision making; international experience in both exploration and production; proficient in the industry G&G software application.

DRILL SMARTER™

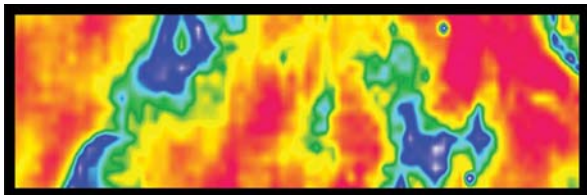
Proprietary Post-Stack Technologies to Aid in the Analysis of Seismic Data and Identification of Direct Hydrocarbon Indicators

Reduce risk • Increase exploration success
Stay ahead of the competition • Improve your ROI



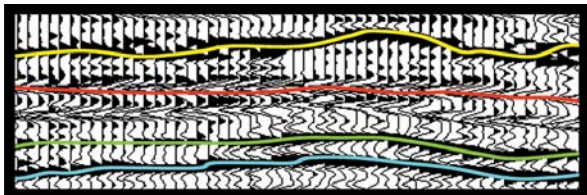
EnergyAbsorptionSM

Measures high frequency absorption indicating the location of increased porosity and potential gas accumulations



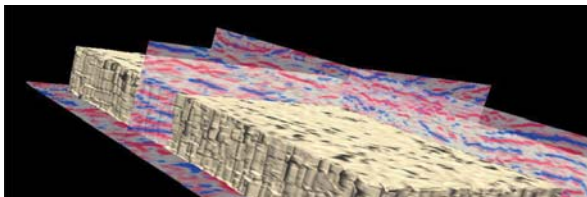
SpecViewSM

Spectral Decomposition identifying hidden stratigraphic information and subtle anomalies within a specific horizon



HiResSM

Recovers detail lost in the standard seismic response



SemCubeSM

Measures a semblance response indicating faulting, fracturing and other anomalous areas



For more information, contact Sara Davis at s_davis@seismicventures.com or (281) 240-1234 x206

Seismic Ventures, Inc. • 12603 Southwest Freeway, Suite 600 • Stafford, Texas 77477
t: 281-240-1234 • f: 281-240-4997 • www.seismicventures.com

The Corpus Christi Geological Society awarded \$9,000 in scholarships to 9 local students in November 2014.

TAMU-CC, and TAMU-K were both represented with scholarship recipients



Texas A&M Corpus Christi Students -- Sajjad Abdullajintakan, Nargiz Dadashova, Gracie Davila, Melinda Martinez, and Holly Thomas.



Students from Texas A&M Kingsville -- Sara Beers, John Dabney, Jonathan Tuck, and Daniella Herrera.

The CCGS Scholarship fund received donations from member contributions, the CCGS Fishing Tournament and the Corpus Christi Oilman's Tennis Tournament proceeds. These donations are vital to allow the committee to fund the scholarships for our deserving students. Every donation is very much appreciated.

The next awards will be given in April 2015 for the Summer/Fall 2015 semesters.

Dawn S. Bissell
Scholarship Committee Chairman

continued on page 19

SPONSORS

CHARGER EXPLORATION

Michael L. Jones
President/Geologist

Onshore Gulf Coast Prospect Generation and Consulting

1001 McKinney Street, Suite 801 Houston, TX 77002
Ofc: 713.654.0080 Cell: 713.398.3091
Email: mjones@chargerexploration.com
www.chargerexploration.com

Serving Corpus Christi for over 20 years

 **mail express**
501 S. Tancahua St.
Corpus Christi, TX 78401

- We process 1st class mail with a direct discount to you
- No meter procedure change except for the amount you meter your envelopes

CALL 888-4332 for details - Ask for Anne

That old gas kick could be your next discovery!

Characterization of Unconventional Reservoirs

Traditional methods of core analysis cannot yield acceptable results when applied to unconventional reservoirs such as gas shales, tight gas sands, coals and thin bed formations.

Production controls on these reservoirs are not limited to hydrocarbons in place, permeability and porosity. Pay identification requires an understanding of complex lithologies and exotic mineralogies.

Only Core Lab offers the comprehensive range of unique technologies required to optimize your unconventional reservoirs.

Geological Petrophysical Geomechanical Geochemical



To learn more about our unique unconventional reservoir evaluation services contact Core Lab.
(713) 328-2121 or (361) 289-5457 psinfo@corelab.com

© 2005 Core Laboratories. All rights reserved.

Notes from CCGS Scholarship recipients, November 2014

My name is Holly Thomas and I would like to personally thank the Corpus Christi Geological Society for awarding me a scholarship for the 2015 spring semester. Without your support my dreams and many opportunities would never be a reality. I am very thankful for the awarding of this scholarship, and I feel honored to have you and your members support behind me on my exciting journey through college. Thank you so much for the recognition of my hard work!

Holly attends Texas A&M University Corpus Christi majoring in Geology, with a minor in Communication. She is very active member in the TAMUCC Geology Club and part of the TAMUCC Sea Turtle Club. She helped the Geology department with Island Days and the Science Olympiad in the spring of 2014. She has been Supplemental Instructor for Dr. Anders. Holly regularly attends our CCGS luncheons, where she enjoys discussing and learning about important geological advances in the community.

From Daniella Herrera, Class of 2015, Geology Major at A&M Kingsville:

I am sincerely honored to have been selected as the recipient of the CCGS Scholarship. Thank you for your generosity, which will allow me to keep pursuing my Masters Degree.

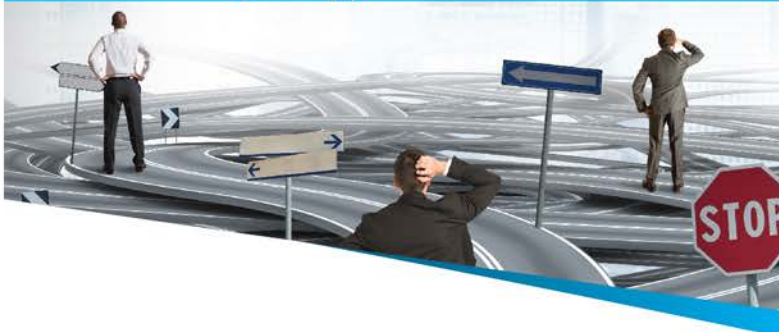
I am very thankful for all your help these past few years of my undergraduate career. Thank you for believing in me and all the other students you have rewarded.

Daniella will graduate with Honors from Texas A&M Kingsville in May 2015 with a B.S. in Geology and minor in Geography and Mathematics. She is a Presidential Scholar while being involved in multiple organizations. She has been a Teaching Assistant in several GIS and Remote Sensing classes. She is a GIS Technician for the city of Kingsville. She plans to attend graduate school after graduation from TAMUK.

continued on page 21

Licensing Data?

Don't Let Tape Copy Costs - Drive Your Decision



NEGOTIATE
your tape copies of field data
BEFORE signing contract.

OUR SERVICES

- Onshore and OBC Controlled Amplitude & Controlled Phase (CA/CP) Processing
- Surface Consistent Processing
- Seamless Multi-Survey Merge
- Gather Conditioning with AVO Attributes
- Inversion and Fluid / Lithology Prediction

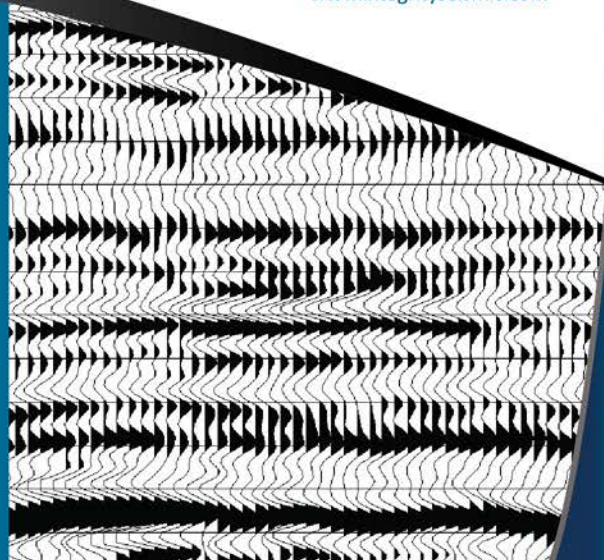
SENIOR PROCESSING GEOPHYSICISTS

- Daniela Smoleanu / Partner
- Karen Chevis-McCoy / Partner
- Steven Larson / Partner

INTEGRITY
SEISMIC SERVICES
(713)357-4706
www.integrityseismic.com

Zane Swope
President - Partner
(713)357-4706 Ext 7006
(281)635-9162 (Cell)
zswope@integrityseismic.com

James Bloomquist
Business Development Manager
(713)357-4706 Ext 7008
(281)660-9695 (Cell)
Jbloomquist@integrityseismic.com



What are your well costs?

\$3 MM, \$5 MM, \$10 MM

100 Square miles of true
CA/CP PSTM re-processing
≈ **\$150,000**

100 Square miles of tape
copy charges
≈ **\$20,000 - \$40,000**

DON'T YOU OWE IT

to **YOURSELF** and
YOUR COMPANY

to have the best image
before drilling?

All of our scholarship applicants are very accomplished and impressive young folks. It is an honor and privilege to be involved with the scholarship committee and get to know these students. A commitment to serve on the scholarship committee is for one to four years. There will be openings on the committee in the upcoming year. If you are interested in serving on the scholarship committee, talk to Leighton Devine, as members are appointed by the CCGS executive board. If you don't have time to serve on the committee, but still want to be involved, a donation to the scholarship fund is a wonderful way to help.

Corpus Christi Geological Society

2014 Year End Scholarship Contribution

As you consider year-end charitable giving, remember that gifts made before December 31 could generate income tax deductions that may help reduce your tax bill for 2014.

Please mail your donation to:

**Dawn Bissell, CCGS Scholarship Chairman
253 Circle Drive · Corpus Christi, Texas 78411**

Donation made by: _____
First Name MI Last Name Date

Company Name: _____

To mail acknowledgement: Address _____

City _____ State _____ Zip _____


Phone _____

CCGS Scholarship Donation \$ _____

Provides scholarships to Geology/Earth Science majors attending TAMUCC, TAMUK, and Del Mar.

Other, Please specify: _____ \$ _____


SPONSORS



NEI
Nueces Energy, Inc.
P.O. Box 252
Corpus Christi, Texas 78403
Office: (361) 884-0435
Fax: (361)-654-1436
www.nuecesland.com

Nueces Energy, Inc. is a complete land services company in the business of providing professional landmen and project management to various energy related jobs primarily in the oil and gas industry.

With over 30 years of industry experience, we specialize in determining surface and subsurface ownership and negotiating and acquiring contracts, rights of way agreements, and easements to provide our clients with the legal right to explore and develop oil and gas resources. We provide a full service land company capable of managing any project no matter how large or small.



THUNDER EXPLORATION, INC.
Celebrating 30+ years of prospect generation and exploration in the following South Texas plays and trends.

Frio	San Miguel	Edwards
Jackson	Austin Chalk	Pearsall
Yegua	Eagle Ford	Sligo
Wilcox	Buda	Cotton Valley
Olmos	Georgetown	Smackover

Thunder is currently seeking non-operated working interest participation in projects and prospects.

Contact Walter S. Light Jr.
President/Geologist
713.823.8288
EMAIL: wthunderx@aol.com

Headington Energy Partners, LLC



902 North Tower – 500 N. Shoreline Blvd. – Corpus Christi, Texas
Phone: (361) 885-0110

SPONSORS

KNOWLEDGE REVEALED

PURPOSE DRIVEN

- Unrivaled land seismic acquisition capabilities
- Specific solutions for all terrains and environments (land, shallow water/transition zone and OBC)
- Purpose driven crews with proven experience around the world
- Processing and Interpretation services revealing the project knowledge you need
- Full azimuth 3D and 3C coverage in unconventional resource plays
- Multi-Client opportunities in North America, Latin America and Australasia
- Proven experience in:
 - Azimuthal anisotropy resolution and fracture identification
 - Multicomponent processing
 - AVO processing and inversion



INNOVATIVE
GEOPHYSICAL
SOLUTIONS



geokinetics.com

sponsors



Winn Exploration Co., Inc.

Actively Seeking High Quality
Drilling Prospects

Contacts:

Mike Layman (Geophysicist)	361-844-6922
Tom Winn (Geologist)	361-844-6992
Southern Winn (Geologist)	361-844-6998

800 North Shoreline Blvd.
19th Floor, North Tower
Corpus Christi, Texas 78401

Office: 361-844-6900 Fax: 361-844-6901

WEL-LAB

HYDROCARBON LOGGING SERVICE



Operating in South Texas and Gulf Coast since 1961

Contact: Mike Bullard

P.O. Box 1011

Kingsville, Texas 78364

361-221-9717

Email: md_bullard@sbcglobal.net

A Great Place For Business

In the heart of the Business District
Broadway at Leopard

- Onsite Management
- Conference Room
- Deli & Vending Room
- Security Card Access
- High Speed Elevators
- View of Corpus Christi Bay

COMMITTED TO EXCELLENCE
Yesterday • Today • Tomorrow

The
600
BUILDING

Contact
Ellen Blasingame
698-6000

ecblasingame@netscape.net





Performance You Can Count On

An acknowledged leader in today's exploration and production industry, EOG Resources looks ahead.

Annually, EOG is one of the most active drillers in the United States. We grow through the drill bit, rather than seeking major acquisitions or mergers to bolster our reserves and production. This unrelenting focus on organic production growth has proven successful because we have identified significant North American resource plays for tomorrow. Our creative, hardworking explorationists and those who support them utilize the latest technology available in the marketplace, adapting and modifying it to meet the challenges EOG faces. With a focus on returns, EOG continues to produce peer-leading financial and operational results.

In 2013, EOG became the largest onshore oil producer in the Lower 48, and we're still growing.

EOG Resources, Inc.

539 N. Carancahua
 Suite 900
 Corpus Christi, TX 78401-0908
 361-883-9231
www.eogresources.com



AS GOOD AS OUR WORD TAP INTO OUR RESERVOIR



www.dawson3d.com

509 W Wall, Suite 800

Midland, Texas 79701

432-884-3000

800-D-DAWSON

Houston, Texas 713-917-6772

Denver, Colorado 303-723-0440

Oklahoma City, Oklahoma 405-848-7512

Michigan 248-448-9533

EXPERIENCE For over a half-century Dawson has helped its clients succeed. In both seismic acquisition and processing, we deliver high quality data that gets clear-cut results. From field equipment to software, we put the latest technologies into the hands of seasoned professionals who have geophysical knowledge specific to all major U.S. basins. Decades of acquiring data and imaging objectives to provide total subsurface picture. That's what our experience gives you.



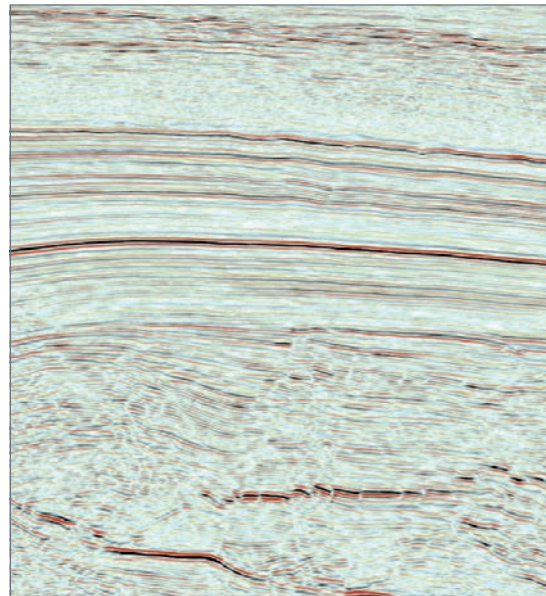
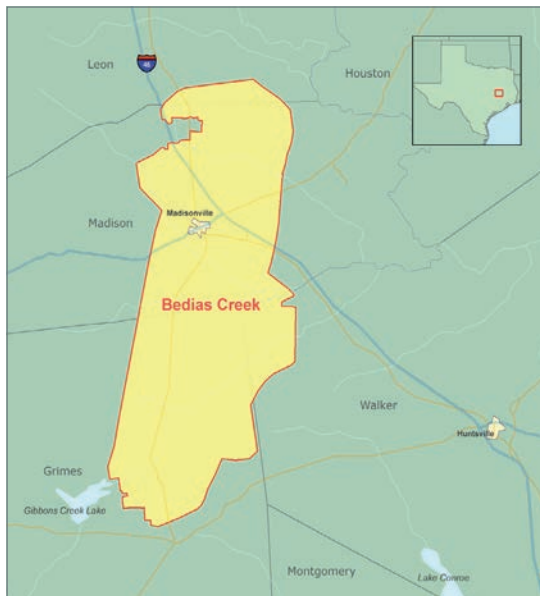
Dawson Geophysical Company

Planning • Design • Acquisition • Processing • Results



Bedias Creek 3D

Madison, Grimes, Walker,
and Leon Counties, Texas



- 323 mi² of high-quality, high-fold data (110-fold) acquired using cableless **UNITE** crews and a dynamite source
- State-of-the-art processing, including 5D Interpolation and Orthorhombic Pre-Stack Time Migration
- Data now available

For more detailed information contact us:

Scott Tinley +1 832 351 8544 scott.tinley@cgg.com
Cheryl Oxsheer +1 832 351 8463 cheryl.oxsheer@cgg.com

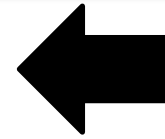
cgg.com/multi-client



SUPPORT YOUR SOCIETY

Advertise !!!

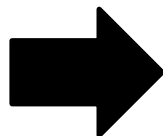
with the CCGS - CBGS



****NOW OFFERING****
WEBSITE ADS @
WWW.CCGEO.ORG

BANNER AD \$2500/YR
SIDE PAGE AD \$1500/YR

**MONTHLY
 BULLETIN
 ADS**



1.65" x 2.4" \$75	1.65" x 4.8" \$150
1/8 page 2.2" x 3.6" \$250	CCGS - CBGS Bulletin Ad Space Available: Annual Rates (9 issues + directory)
1/4 page 3.6" x 4.3" \$375	
1/2 page 7.2" x 4.3" \$500	Full page 7.2" x 8.6" \$850
	Inside Front or Back Cover \$1000

FOR MORE DETAILS:

EMAIL ADS@CCGEO.ORG OR CALL (361) 887-2691

GEO LINK POST

<http://www.lib.utexas.edu/books/landsapes/index.php> Free service. Rare, fragile, hard-to-find, public domain documents covering various topics about the landscape of Texas. Includes the Texas Geological Survey from 1887 until 1894.

USGS TAPESTRY OF TIME AND TERRAIN <http://tapestry.usgs.gov> The CCGS is donating to all of the 5th and 6th grade schools in the Coastal Bend. Check it out--it is a spectacular map. You might want to frame one for your own office. The one in my office has glass and a metal frame, and It cost \$400 and it does not look as good as the ones we are giving to the schools.

FREE TEXAS TOPOS'S <http://www.tnris.state.tx.us/digital.htm> these are TIFF files from your state government that can be downloaded and printed. You can ad them to SMT by converting them first in Globalmapper. Other digital data as well.

FREE NATIONAL TOPO'S [http://store.usgs.gov/b2c_usgs/b2c/start/\(xcm=r3standardpitrex_prd\)/do](http://store.usgs.gov/b2c_usgs/b2c/start/(xcm=r3standardpitrex_prd)/do) go to this webpage and look on the extreme right side to the box titled TOPO MAPS DOWNLOAD TOPO MAPS FREE.

<http://www.geographynetwork.com/> Go here and try their top 5 map services. My favorite is 'USGS Elevation Date.' Zoom in on your favorite places and see great shaded relief images. One of my favorites is the Great Sand Dunes National Park in south central Colorado. Nice Dunes.

<http://antwrp.gsfc.nasa.gov/apod/asropix.html> Astronomy picture of the day--awesome. I click this page everyday.

<http://www.spacimaging.com/gallery/ioweek/iow.htm> Amazing satellite images. Check out the gallery.

<http://www.ngdc.noaa.gov/seg/topo/globegal.shtml> More great maps to share with kids and students.

www.ccgeo.org Don't forget we have our own we page.

<http://terra.nasa.gov/gallery/> Great satellite images of Earth.

www.ermaper.com They have a great free downloadable viewer for TIFF and other graphic files called ER Viewer.

<http://terrasrver.com> Go here to download free aerial photo images that can be plotted under your digital land and well data. Images down to 1 meter resolution, searchable by Lat Long coordinate. Useful for resolving well location questions.

TYPE LOGS OF SOUTH TEXAS FIELDS by Corpus Christi Geological Society

NEW (2009-2010)TYPE LOGS IN RED; ***2011;**

lost now found

ARANSAS COUNTY

Aransas Pass/McCampbell Deep
Bartell Pass
Blackjack
Burgentine Lake
Copano Bay, South
Estes Cove
Fulton Beach
Goose Island
Half Moon Reef
Nine Mile Point
Rockport, West
St. Charles
Tally Island
Tract 831-G.O.M. (offshore)
Virginia

BEE COUNTY

Caesar
Mosca
Nomanna
Orangedale(2)
Ray-Wilcox
San Domingo

Tulsita Wilcox

Strauch_Wilcox

BROOKS COUNTY

Ann Mag
Boedecker
Cage Ranch
Encintas
ERF
Gyp Hill

Gyp Hill West

Loma Blanca
Mariposa
Mills Bennett
Pita
Tio Ayola
Tres Encinos

CALHOUN COUNTY

Appling
Coloma Creek, North
Heyser
Lavaca Bay
Long Mott
Magnolia Beach
Mosquito Point
Olivia
Panther Reef
Powderhorn
Seadrift, N.W.
Steamboat Pass
Webb Point
S.E. Zoller

CAMERON COUNTY

Holly Beach
Luttes
San Martin (2)
Three Islands, East

Vista Del Mar

COLORADO COUNTY

E. Ramsey
Graceland N. Fault Bik
Graceland S. Fault Bik

DEWITT COUNTY

Anna Barre
Cook
*******Nordheim**
Smith Creek
Warmley

Yorktown, South

DUVAL COUNTY

DCR-49
Four Seasons
Good Friday
Hagist Ranch
Herbst
Loma Novia
Petrox
Seven Sisters
Seventy Six, South
Starr Bright, West

GOLIAD COUNTY

Berclair
North Blanca
Bombs
Boyce
Cabeza Creek, South
Goliad, West
St Armo

HIDALGO COUNTY

Terrell Point
Alamo/Donna
Donna
Edinburg, West
Flores-Jeffress
Foy
Hidalgo

LA Blanca

McAllen& Pharr
McAllen Ranch
Mercedes
Monte Christo, North
Penitas
San Fordyce
San Carlos
San Salvador
S. Santallana
Shary
Tabasco
Weslaco, North
Weslaco, South

JACKSON COUNTY

Carancahua Creek
Francitas
Ganado & Ganado Deep
LaWard, North
Little Kentucky

Maurbro

StewartSwan Lake

Swan Lake, East
Texana, North
West Ranch

JIM HOGG COUNTY

Chaparosa
Thompsonville,N.E.

JIM WELLS COUNTY

Freebom
Hoelsher
Palito Blanco
Wade City

KARNES COUNTY

Burnell
Coy City
Person
Runge

KENEDY COUNTY

Candelaria
Julian
Julian, North
Laguna Madre
Rita
Stillman

KLEBERG COUNTY

Alazan
Alazan, North
Big Caesar
Borregos
Chevron (offshore)
Laguna Larga
Seeligson
Sprint (offshore)

LA SALLE COUNTY

*****Pearsall**

LAVACA COUNTY

Hallettsville
Hope
Southwest Speaks
Southwest Speaks Deep

LIVE OAK COUNTY

Atkinson
Braslau
Chapa
Clayton
Dunn
Harris
Houdman
Kittie West-Salt Creek
Lucille
Sierra Vista
Tom Lyne
White Creek
White Creek, East

MATAGORDA COUNTY

Collegeport

MCMULLEN COUNTY

Arnold-Weldon

Brazil
Devil's Waterhole
Hostetter
Hostetter, North

NUECES COUNTY

Agua Dulce (3)
Arnold-David
Arnold-David, North
Baldwin Deep
Calallen
Chapman Ranch
Corpus Christi, N.W.
Corpus Christi West C.C.
Encinal Channel
Flour Bluff/Flour Bluff, East
GOM St 9045(offshore)
Indian Point
Mustang Island
Mustang Island, West
Mustang Island St.
889S(offshore)
Nueces Bay/Nueces Bay
West

Perro Rojo

Pita Island
Ramada
Redfish Bay
Riverside
Riverside, South
Saxet
Shield
Stedman Island

Turkey Creek

REFUGIO COUNTY

Bonnieview/Packery Flats
Greta
La Rosa
Lake Pasture
Refugio, New
Tom O'Connor

SAN PATRICIO COUNTY

Angelita East
Commonwealth
Encino
Enos Cooper
Geronimo
Harvey
Hiberia
Hodges
Mathis, East
McC Campbell Deep/Aransas Pass
Midway
Midway, North
Odem

Plymouth

Portilla (2)
Taft
Taft, East

White Point, East

STARR COUNTY

El Tanque
Garcia
Hinde
La Reforma, S.W.

Lyda

Ricaby
Rincon
Rincon, North
Ross
San Roman
Sun
Yturria

VICTORIA COUNTY

Helen Gohike, S.W.
Keeran, North
Marcado Creek
McFaddin
Meyersville
Placedo

WEBB COUNTY

Aquilares/Glen Martin
Big Cowboy
Bruni, S.E.
Cabezon
Carr Lobo
Davis
Hirsch
Juanita
Las Tiendas
Nicholson
O'Hem
Olmitos
Tom Walsh

WHARTON COUNTY

Black Owl

WILLACY COUNTY

Chile Vieja

La Sal Vieja
Paso Real
Tenerias
Willamar

ZAPATA COUNTY

Benavides
Davis, South
Jennings/Jennings, West
Lopeno
M&F

Pok-A-Dot

ZAVALA COUNTY

El Bano

Call Coastal Bend Geological Library, Maxine: 361-883-2736
1 log -- \$10 each, 5-10 logs \$9 each and 10 + logs \$8.00 each – plus postage

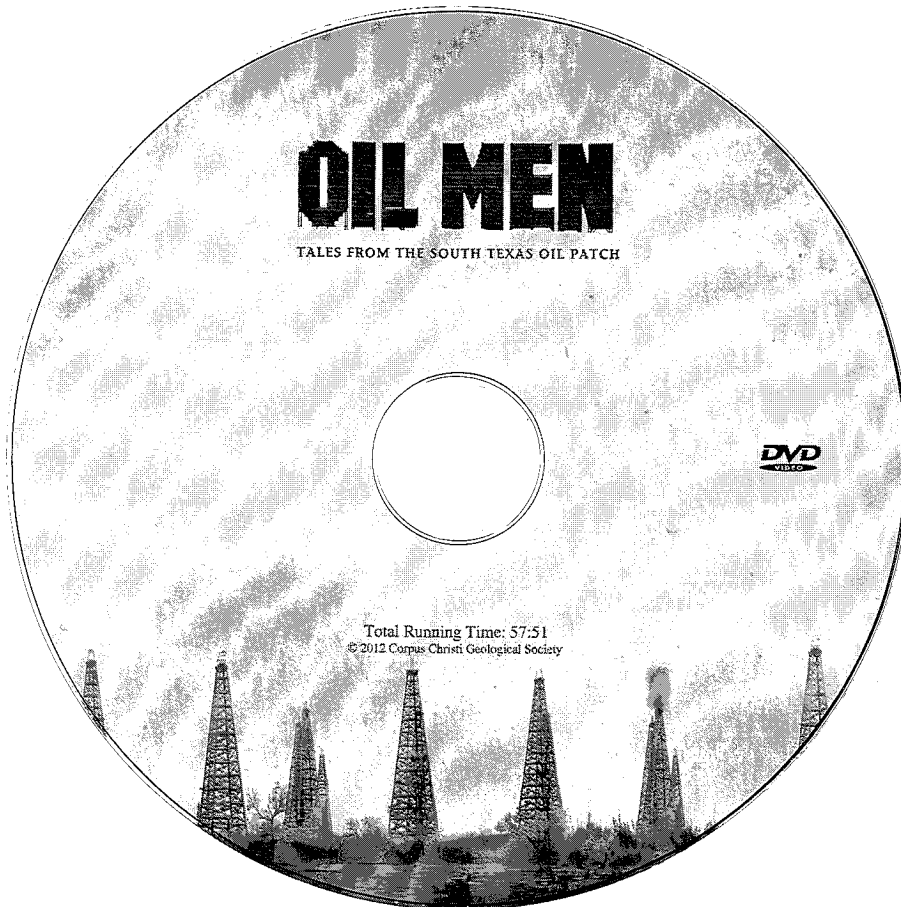
OIL MEN

TALES FROM THE SOUTH TEXAS OIL PATCH

DVD

MEMBER PRICE \$25

NONMEMBER \$30

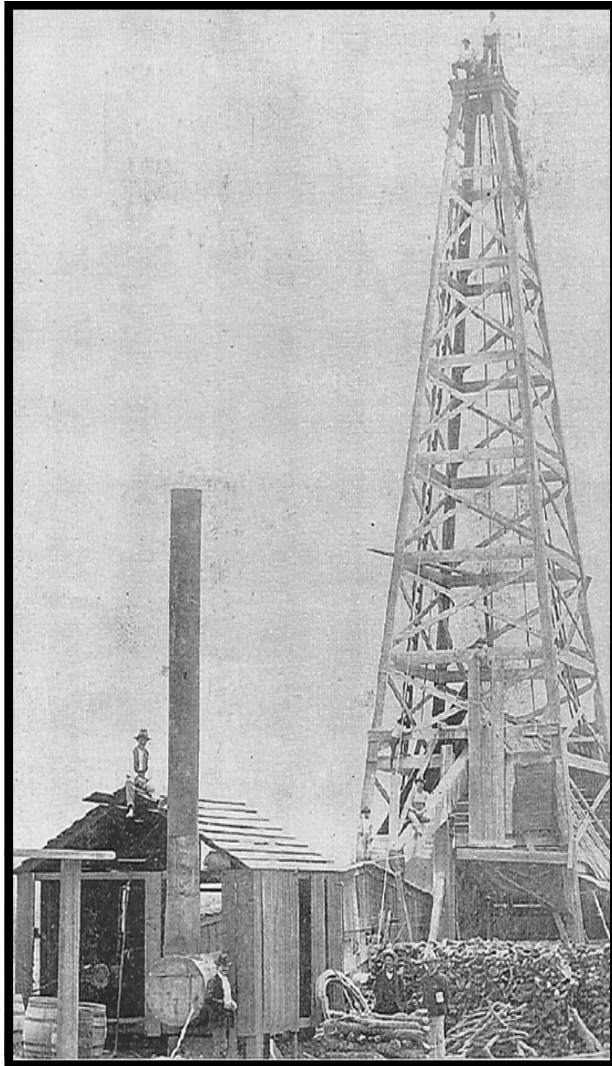


To Order DVD

Sebastian Wiedmann

swiedmann@braytoncc.com

If mailed add \$5



Corpus Christi Geological Society
C/O Javelina Press
P. O. Box 60181
Corpus Christi, TX 78466

Order Form

Mail order form for Wooden rigs-Iron Men. The price is \$75 per copy, which includes sales tax, handling, and postage

Name _____

Address _____

City, State, Zip _____

No. of books _____ Amount enclosed _____

Send to Corpus Christi Geological Society Book Orders

P. O. Box 60181

Corpus Christi, TX. 78466 Tax exempt# if applicable _____

Wooden Rigs—Iron Men

The Story of Oil & Gas in South
Texas

By Bill & Marjorie K. Walraven

Published by the
Corpus Christi Geological Society

david becker
geologist

David Becker
exploration
geologist

o: (361) 884-3613
f: (888) 869-2011

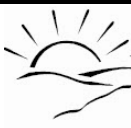
600 leopard st. ste 706
corpus christi, tx 78473

dkbecker1137@sbcglobal.net

 **Bief Seis, Inc.**
Geophysical Consulting

David Biersner, President
19446 Arrowood Place
Garden Ridge, Tx 78266
Cell: 281.744.7457
E-Mail: bierseis@yahoo.com

Field Quality Control
Program Management
Permit Management
Seismic Line Clearing
Supervision

 **Dawn S. Bissell**
Geoscientist

Advent Geoscience Consulting, LLC

Phone: 361-960-2151
Fax: 961-854-2604
Email: bissells@swbell.net

253 Circle Drive
Corpus Christi, TX 78411
Home: 361-854-2635

James L. Claughton
CONSULTING GEOLOGIST

Office | 361-887-2991
Fax | 361-883-4790
Cell | 361-960-2014
clausoie@sbcglobal.net

615 North Upper Broadway
Suite 1935
Corpus Christi, Texas
78401-0779

TEXAS LONE STAR  OIL Exploration & GAS Production

PETROLEUM CORPORATION


JEFF COBBS
President - Geologist

615 Leopard St., Suite 336 Office (361) 883-2911
Corpus Christi, Texas 78401-0610
jc@tlspc.com Cell (361) 960-0530

Jim Collins
Geoscientist



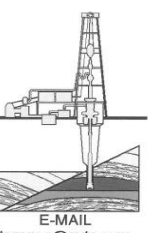
361.537.4034
jim@gulfcoastgas.com

 **SV Energy Company, LLC**
Conventional Thinking. Unconventional Results.

Frank G. Cornish
Consulting Geologist
615 N. Upper Broadway, Suite 1770
Corpus Christi, TX 78401
frank.cornish@gmail.com

361-883-0923 (o)
1-800-510-5810 (f)
361-563-9184 (m)

TOM DAVIDSON
GEOLOGIST



28550 IH-10 WEST SUITE #4
BOERNE, TEXAS 78006

BUS: (210) 844-8963
RES: (830) 981-5883
FAX: (830) 981-5567
CEL: (210) 844-8963

E-MAIL
tomgeo@gvtc.com

SeismicVentures

Sara Davis
Business Development Manager
s_davis@seismicventures.com


Seismic Ventures, LLC
4805 Westway Park Blvd.
Suite 100
Houston, Texas 77041

tel: 281-240-1234 (x3206)
cel: 713-256-8737
fax: 281-240-4997
www.seismicventures.com

ONE APEX ENERGY, INC.

CHRISTIAN DOHSE
Consulting Geologist

(361) 877-3431
CHRISTIAN.DOHSE@GMAIL.COM
CORPUS CHRISTI, TX



Tommy Dubois
Geologist

2627 CR 312
Yoakum, Texas 77995

361-215-0223 tvdubois@yahoo.com


Enrique (Rick) Garza
Operation Supervisor
US Land

 **Global Geoscience Solutions**

Rick.Garza@GlobalGeophysical.com
DIRECT +1 713-908-7428
WORK +1 361-701-6480
FAX +1 713-808-7928
13927 South Gessner Road
Missouri City, Texas 77489 USA
www.GlobalGeophysical.com

GISLER BROTHERS LOGGING Co., Inc.

P.O. BOX 485
106 E. MAIN RUNGE, TX 78151



Wes Gisler
Bus. (830) 239-4651
Mobile (361) 676-1369
Home (830) 239-4914
Direct (830) 239-4693
wes@gislerbrotherslogging.com


Robert Graham
President
grexploration@gmail.com

Phone 361-882-7681
Fax 361-882-7685
Cell 361-774-3635


GrX Inc.
Exploratory Prospects & Production Development

Mail: P. O. Box 1843
Corpus Christi, Texas
78403-1843

Office: 606 N. Carancahua, Ste. 610
Corpus Christi, Texas
78401-0634



RAY GOVETT, Ph. D.
CONSULTING GEOLOGIST
361-855-0134

 **HART EXPLORATION, LLC.**

RICK HART
Geologist / Owner

P.O. Box 729
Coldspring, Texas 77331


Cell: 512-626-3053
Email: hartexploration@aol.com

RIVIERA EXPLORATION, LLC

H. TONY HAUGLUM
President

600 LEOPARD ST.
SUITE 1704
CORPUS CHRISTI
TEXAS 78401

PHONE 361.884.1811
FAX 361.884.8071
E-MAIL THAUGLUM@SWBELL.NET




BRENT F. HOPKINS
PRESIDENT AND CEO
GEOLOGIST

SUEMAUR EXPLORATION & PRODUCTION, LLC


FROST BANK PLAZA
802 N. CARANCAHUA, SUITE 1000
CORPUS CHRISTI, TEXAS 78401-0015

OFFICE: (361) 884-8824
FAX: (361) 884-9623
RES: (361) 643-8373
CELL: (361) 215-4855
Email: brenth@suemaur.com

 **EOG Resources, Inc.**
539 N. Carancahua Suite 900
Corpus Christi, TX 78401-0908
Direct: (361) 887-2681

Randy Lambert
Geological Advisor

Fax: (361) 844-1546
randy_lambert@eogresources.com

 **LMP Petroleum, Inc.**

Louis R. Lambiotte
Geologist

615 N. Upper Broadway, Suite 1770
Corpus Christi, TX 78477
Tel: (361) 883-0923
Fax: (361) 883-7102
E-mail: geology@LMPexploration.com

James R. Jones
Geologist

7434 Long S Drive
Corpus Christi, TX 78414
361-779-0537
jrjones5426@aol.com

"The Mud Stops Here"




LUKE KINGSBURY
Field Engineer - Gulf Region

STRATA-VANGUARD® - STRATA-FLEX® - FRAC-ATTACK®
STRATA-TROL® - FOAM-BLAST® - STRATA-LUBE®

P.O. Box 272
Crowley, LA 70527-0272
Toll Free 1-888-856-0001
www.stratacontrol.com

Office (337) 785-0000
Fax (337) 785-0004
Mobile (361) 739-9667
Email luke@stratacontrol.com



Vicki Marlett
Sr. Account Manager

972-690-1122 x132
Fax: 972-690-1163
Cell: 214-557-0815
e-mail: vmarlett@geotrace.com

2435 N. Central Expressway, Suite 1100
Richardson, Texas 75080
www.geotrace.com

CURTIS R. MAYO
GEOLOGICAL CONSULTANT

Reserve Analysis Prospect Evaluation
Expert Witness Prospect Generation

Fredericksburg, Texas 78624
Office: 830.992.2938 Cell: 830.765.0628 E-Mail: cmayo@crecsc.net

HOLLIMON OIL CORPORATION

ARMANDO (MANDY) MEDINA
EXPLORATION MANAGER

8610 N. NEW BRAUNFELS
SUITE 705
SAN ANTONIO, TEXAS 78217

amedina@hollimonoil.com
OFF: (210) 829-8822
FAX: (210) 829-8833



Dennis O. Moore
Formation Evaluation
Wireline Systems - Southern Area

800 N. Shoreline Blvd., Suite 700 N. Tower
Corpus Christi, Texas 78401-3771
Office: 361-883-1561
Fax: 361-883-4390
Cell: 361-816-5144
Email: dennis.moore@bakerhughes.com

www.bakerhughes.com



J. Mark Miller
President

Phone (361) 883-7700
Fax (361) 883-7701
mark@millersmithgas.com

545 N. Upper Broadway
Suite 400
Corpus Christi, Texas 78476

Wellhead Gas Marketing

Mailing Address
615 Leopard, Ste. 640
Corpus Christi, Texas 78401-0641
361.882.7888 phone
361.882.7889 fax
361.946.2581 mobile

Contact Address
1701 Southwest Parkway, Ste. 109
College Station, Texas 77840
866.946.2581 phone
866.946.2580 fax

pmueller@muclrexp.com
www.muclrexp.com



J. Paul Mueller, Jr.
President


Patrick Nye
President
patrick@nyexp.us

Office: (361) 452-1435
Cell: (361) 658-1089
Res: (361) 238-2146



NYE
Exploration & Production, LLC

802 N. Carancahua, Suite 1840
Frost Bank Plaza
Corpus Christi, TX 78401
www.nyexp.us




Herradura Petroleum, Inc.
JEFF OSBORN
Geologist

711 N. Carancahua, Ste. 1750
Corpus Christi, Texas 78475
e-mail: jeff@herradurapetroleum.com

Office: 361-884-6886
Fax: 361-884-9102
Cell: 361-537-2349

SWIFT ENERGY COMPANY



RICHARD M. PARKER P.G.
Manager / Geological Operations
TBPG License # 6056

(281) 874-2585
Mobile # 1 (713) 724-4380
Mobile # 2 (713) 206-3158
Home: (281) 412-0745

16825 NORTHCHASE DR., SUITE 400
HOUSTON, TEXAS 77060 E-mail: richard.parker@swiftenergy.com



Beth Priday
Senior Geologist

VirTex Operating Co., Inc.

615 North Upper Broadway
Suite 525, WF168
Corpus Christi, Texas 78477
Bus (361) 882-3046
Fax (361) 882-7427
Mobile: (361)443-5593 • E-mail: bpriday@virtexoperating.com

Minerals Exploration and Mining
Uranium In Situ Leach

Richard M. Rathbun, Jr.
Certified Professional Geologist 9544 / AIPG
Texas Board of Prof. Geoscientists / Lisc. No. 4679

921 Barracuda Pl.
Corpus Christi, Texas 78411

(361) 903-8207
rathbunassoc@msn.com



Weatherford

Wireline Services

Weatherford International Ltd.
401 E. Sonterra Blvd., Suite 1
San Antonio, Texas 78258
USA

Sam Roach
US Gulf Coast Wireline Sales

+1.210.930.7588 Direct
+1.210.930.7610 Fax
+1.210.241.2463 Mobile

sam.roach@weatherford.com
www.weatherford.com

First Rock, Inc.

RGR Production First Rock I, LLC

Gregg Robertson

Main Office:
600 Leopard, Suite 1800
Corpus Christi, TX 78401
361-884-0791

Field Office:
5574 FM 1344
Floresville, TX 78114
830-484-1122



Alvin Rowbatham
Sales, Gulf of Mexico

Main +1 713 789 7250
Direct +1 281 781 1065
Fax +1 713 789 7201
Mobile +1 832 372 2366
alvin.rowbatham@iongeo.com

2105 CityWest Blvd. | Suite 900
Houston, TX 77042-2839 USA

TOM SELMAN
selmanlog.com
tselman@selmanlog.com

Ofc. (432) 563-0084
(800) 578-1006
Cell (432) 288-2259



SELMAN
AND ASSOCIATES, LTD.

GEOLOGICAL CONSULTING / SURFACE LOGGING SERVICES

P.O. Box 61150 4833 Saratoga #624 P.O. Box 2993
Midland, TX 79711 Corpus Christi, TX 78413 Rock Springs, WY 82902



Petrophysics, Inc.
Velocity Surveys - Synthetics - Sonic Log Data

Joe H. Smith
President

713.560.9733
jsmith@petrophysics.com
www.petrophysics.com

P.O. Box 863323
Plano, Texas 75086

Crossroads Exploration

Gloria D. Sprague
Geologist

Timpson Building
189 N. First Street, Suite 111
Timpson, Texas 75975

Office: (936) 254-3600
Fax: (936) 254-3602
Mobile: (936) 488-9428
E-Mail: gsprague@usawide.net

Charles A. Sternbach, Ph.D.
President

Star Creek Energy Company
Oil and Gas Exploration

800 Wilcrest Drive, Suite 230
Houston, Texas 77042
office: 281.679.7333
cell: 832.567.7333
carbodude@gmail.com



www.starckenergy.com

THOMAS W. SWINBANK
CERTIFIED PETROLEUM GEOLOGIST
PRESIDENT

STRIKE OIL & MINERALS CORP.

P.O. Box 1399
GEORGETOWN, TEXAS 78627

PHONE/FAX 512-863-7519
HOME 512-863-7903
CELL 512-876-9585

Dennis A. Taylor
Vice President of Geology
dennis@amshore.com



Off: (361) 888-4496
Fax: (361) 888-4588
Direct Line: (361) 844-6722
Cell: (972) 672-9916

AMERICAN SHORELINE, INC.
AMSHORE TEXAS WIND, LLC

802 N. Carancahua Street, Suite 1250
Corpus Christi, Texas 78401-0019
www.amshore.com

Environmental Exploration & Production

JEANIE TIMMERMANN
GEOSCIENTIST
TX LICENSE #2289

7214 Everhart #9 (361) 991-7451
Corpus Christi, TX 78413 jtimmermann74@msn.com



**Davis
Petroleum
Corp.**

www.davispetroleumcorp.com

Jim Travillo
Senior Geoscientist

1330 Post Oak Boulevard
Suite 600
Houston, Texas 77056

Direct: 713.439.6773
Main: 713.626.7766
Fax: 713.626.7775
Cell: 713.823.9332

jtravillo@davcos.com



10001 Richmond Avenue
Houston, TX 77042-4299
P.O. Box 2469 (77252-2469)
Tel: 713-689-6552
Fax: 713-689-1089
Mobile: 281-615-6827
CTutt@slb.com

Chris O. Tutt
Sales Representative
NAM Sales

SEBASTIAN P. WIEDMANN
GEOSCIENTIST

WILSON PLAZA WEST OFFICE (361) 884-4084
606 N. CARANCAHUA, SUITE 500 FAX (361) 882-7816
CORPUS CHRISTI, TEXAS 78401 MOBILE (361) 946-4430
swiedmann@braytoncc.com



Dave Willis
Onshore Sales

Main +1 713 789 7250
Direct +1 281 781 1035
Mobile +1 281 543 6189
Fax +1 713 789 7201
dave.willis@iongeo.com

2105 CityWest Blvd. | Suite 900
Houston, TX 77042-2839 USA



10001 Richmond Avenue
Houston, Texas 77042-4299
P.O. Box 2469 (77252-2469)
Tel: 713-689-2757
Fax: 713-689-1089
Mobile: 281-658-5263
CYanez@slb.com

Charles Yanez
Manager
Shared Value Optimization

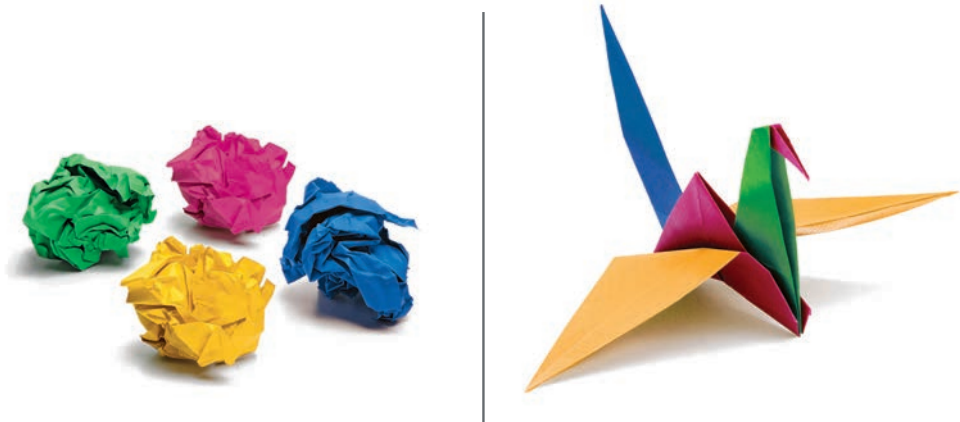


WILLIAM A. WALKER, JR.
Certified Petroleum Geologist
bwalker@stalkerenergy.com

1717 WEST 6th STREET, STE. 230 • AUSTIN, TX 78703
2001 KIRBY DR., STE. 950 • HOUSTON, TX 77019

AUSTIN
512.457.8711
cell: 512.217.5192
fax: 512.457.8717
HOUSTON
713.522.2733
cell: 512.217.5192
fax: 713.522.2879

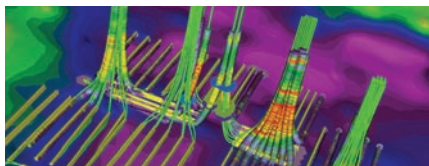
YOUR CARD COULD BE HERE!!!
\$30 FOR 10 ISSUES
AD PRICES PRO-RATED
EMAIL CHRISTIAN AT
CHRISTIAN.DOHSE@GMAIL.COM



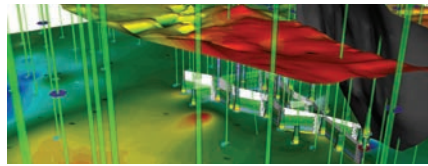
Build reservoir analyses. Watch your potential soar.

IHS PETRA® provides a unique solution to integration, analysis and manipulation of geological, geophysical, petrophysical and engineering information. With easy data loading and a powerful and flexible database, you can both effectively manage projects and quickly visualize results using interactive mapping, cross sections, log plots, cross plots and more—all within a single system. Superior technical support and proven integration of customer enhancements make PETRA the highest-ranked¹ geological interpretation tool in the E&P industry for both reliability and accuracy and ease of use. **Energy information, refined.**

¹Welling & Company Geological & Geophysical Software Study, 2009



Directional Well Module



3D Visualization Module

ihs.com/petra-ccgs-1



The Source
for Critical Information and Insight

©2010 IHS Inc. All rights reserved.