

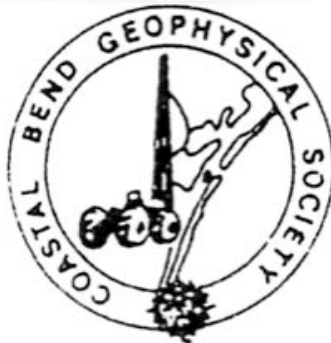
BULLETIN

**Corpus Christi
Geological Society**



and

**Coastal Bend
Geophysical Society**



**May
2015
ISSN 0739 5620**

American Shoreline, Inc.



Specializing in
Oil & Gas Exploration
& Wind Energy

Compliments of

Paul Strunk, Chief Executive Officer
Dennis Taylor, President & Chief Geologist
Jena Nelson, VP Finance & Administration

802 N. Carancahua
Frost Bank Plaza, Suite 1250
Corpus Christi, Texas 78401
(361) 888-4496

www.amshore.com

SPONSORS

KNOWLEDGE REVEALED

PURPOSE DRIVEN

- Unrivaled land seismic acquisition capabilities
- Specific solutions for all terrains and environments (land, shallow water/transition zone and OBC)
- Purpose driven crews with proven experience around the world
- Processing and Interpretation services revealing the project knowledge you need
- Full azimuth 3D and 3C coverage in unconventional resource plays
- Multi-Client opportunities in North America, Latin America and Australasia
- Proven experience in:
 - Azimuthal anisotropy resolution and fracture identification
 - Multicomponent processing
 - AVO processing and inversion



INNOVATIVE
GEOPHYSICAL
SOLUTIONS



geokinetics.com



CORPUS CHRISTI GEOLOGICAL SOCIETY

P.O. BOX 1068 * C.C. TX. 78403

2014-2015

www.ccgeo.org

OFFICERS

President	Leighton Devine	361-510-8872	ldevine@suemaur.com
President Elect			
Vice President	Randy Bissell	361-885-0113	randyb@headington.com
Secretary	Allison Corcoran	361-882-8400	allison@aaoperating.com
Treasurer	Zachary Corcoran	361-658-5850	zcorcoran1982@gmail.com
Past President	Bob Critchlow	361-882-3046	bcritchlow@virtexoperating.com
Councilor I	Rick Paige	361-884-8824	rickp@suemaur.com
Councilor II	Mike Lucente	361-883-0923	mikel@lpexploration.com

AAPG DELEGATES

2006-14	Dennis Moore	361-886-5144	dennis.moore@bakerhughes.com
---------	--------------	--------------	--

EDITORS

Bulletin Editor	Marian Wiedmann	361-855-2542	wiedgulf@aol.com
Bulletin Tech. Editor	Susan Stone	361-739-4759	stonesciences@yahoo.com
Web Master	Chris Davis	361-537-1508	cdavis@spurfire.com

GEOLOGICAL SOCIETY COMMITTEES & CHAIRPERSONS

Advertising	Sara Miller	361-887-2691	sara_miller@eogresources.com
Business Cards	Christian Dohse	361-877-3431	christian.dohse@gmail.com
Arrangements	Allison Corcoran	361-888-8288	allison@aaoperating.com
Bloodmobile	Mike Lucente	361-883-0923	mikel@lpexploration.com
Earth Day	Alan Costello	361-888-4792	acostello@royalcctx.com
Continuing Ed.	Stephen Thomas	361-888-8880	stthomas@virtexoperating.com
Education & Scholarship	Dawn Bissell	361-960-2151	bissells@swbell.net
Fishing Tournament	Leighton Devine	361-882-8400	ldevine@suemaur.com
History	Ray Govett	361-855-0134	ray30@hotmail.com
Membership	Dorothy Jordan	361-885-0110	dorothyj@headington.com

Type Logs	Randy Bissell	361-885-0113	randyb@headington.com
University	Frank Cornish	361-883-0923	frank.cornish@gmail.com
Liaison	Zach Corcoran	361-902-2857	zcorcoran1982@gmail.com



COASTAL BEND GEOPHYSICAL SOCIETY
P.O. BOX 2741 * C.C. TX. 78403
2014-2015

OFFICERS

President	Lonnie Blake	361-883-2831	lonnie_blake@eogresources.com
Vice President	Bob Witherspoon	361-884-8824	bobw@suemaur.com
Secretary/ Treasurer	Matt Hammer	361-888-4792	mhammer@royalcctx.com

COMMITTEES AND CHAIRPERSONS

Membership	Dorothy Jordan	361-885-0110	dorothyj@headington.com
	Randy Bissell	361-885-0113	randyb@headington.com
Golf Chairman	Fermin Munoz	361 960-1126	fmunoz04@hotmail.com
Scholarship/ Chairman	Ed Egger	361-947-8400	edegger69@gmail.com
Education	Vicki Marlett	214-557-0815	vmarlett@geotrace.com

**Visit the geological
Web site at
www.ccgeo.org**

TABLE OF CONTENTS

Officers, Committees, and Chairpersons, CCGS, CBGS.....	2 & 3
Blood Drive.....	5
Calendar of Meetings and Events.....	6 & 7
CCGS President's Letter.....	9
CBGS President's Letter.....	11
Luncheon Meeting Announcement.....	12
Gulf Coast Association of Geological Societies 65th Annual Convention.....	14,15
6th Annual CCGS Saltwater Fishing Tournament.....	18
CCGS awarded scholarships to 14 local students.....	24
CBGS Golf Tournament.....	27
Slides—Seismic Attribute Analysis for the Gulf of Mexico(Fred Hilterman.....	28
Advertise in the bulletin.....	55
Geo Link Post.....	56
Type Logs of South Texas Fields.....	57
Order OIL MEN DVD.....	58
Wooden Rigs Iron Men.....	59
Professional Directory.....	60

*****BLOOD DRIVE*****

THE BLOODMOBILE – IN MAY, 2015
WILL BE AT SOME CONVENIENT LOCATIONS
PLEASE CALL 855-4943 for those locations or –

**FOR CURRENT SCHEDULES & LOCATIONS OF THE
BLOODMOBILES YOU CAN LOG ON TO:**

www.coastalbendbloodcenter.com



*Check out the wild flowers in our great State!
They are Everywhere this Year...
Then - Zoom over to the Bloodmobile!!
Please Donate your Blood!!
You'll be glad you did!*

ATTENTION!!!

When you give blood: They have us listed as C.C. Geological Society. Our number with them is 4254 & it would be helpful if you can give them that number also. Thanks! Mike Lucente

CCGS/CBGS JOINT MEETING SCHEDULE 2014-2015

September 2014							October 2014							November 2014						
S	M	T	W	Th	F	S	S	M	T	W	Th	F	S	S	M	T	W	Th	F	S
	1	2	3	4	5	6				1	2	3	4							1
7	8	9	<u>10</u>	11	12	13	5	6	7	8	9	10	11	2	3	4	5	6	7	8
14	15	16	17	18	19	20	12	13	14	<u>15</u>	16	17	18	9	10	11	12	13	14	15
21	22	23	24	25	26	27	19	20	21	22	23	24	25	16	17	18	<u>19</u>	20	21	22
28	29	30					26	27	28	29	30	31		23	24	25	26	27	28	29
														30						

Sept. 10, 2014
5:30p.m.—8:30p.m.
Kickoff BBQ
Howard’s BBQ & Catering
1002 Antelope Street

Oct. 15—11:30a.m.—1:00p.m.
Speaker: Ken Williams—
Halliburton.
“Barostratigraphy”

Nov. 19—11:30a.m.—1:00p.m.
Speaker: Tony Hauglum--Rivera
Exploration. “Eagleford Update”

December 2014							January 2015							February 2015						
S	M	T	W	Th	F	S	S	M	T	W	Th	F	S	S	M	T	W	Th	F	S
	1	2	3	4	5	6					1	2	3	1	2	3	4	5	6	7
7	8	9	<u>10</u>	11	12	13	4	5	6	7	8	9	10	8	9	10	11	12	13	14
14	15	16	17	18	19	20	11	12	13	14	15	16	17	15	16	17	<u>18</u>	19	20	21
21	22	23	24	25	26	27	18	19	20	<u>21</u>	22	23	24	22	23	24	25	26	27	28
28	29	30	31				25	26	27	28	29	30	31							

Dec. 10—11:30a.m.--1:00p.m.
Speaker: Woodson Godfrey—
PaleoSource. “Distinguishing a
Resource Play

Jan. 21--11:30a.m.—1:00p.m.
Speaker: Lei Zhang—
Schlumberger. “Seismic
Inversion to Reservoir
Simulation”

Feb. 18—11:30a.m.—1:00p.m.
Speaker: Collegiate Month.
“Presentation by TAMUCC,
TAMUK and DelMar”

CCGS/CBGS JOINT MEETING SCHEDULE 2014-2015

March 2015							April 2015							May 2015						
S	M	T	W	Th	F	S	S	M	T	W	Th	F	S	S	M	T	W	Th	F	S
1	2	3	4	5	6	7				1	2	3	4						1	2
8	9	10	11	12	13	14	5	6	7	8	9	10	11	3	4	5	6	7	8	9
15	16	17	18	19	20	21	12	13	14	15	16	17	18	10	11	12	13	14	15	16
22	23	24	25	26	27	28	19	20	21	22	23	24	25	17	18	19	20	21	22	23
29	30	31					26	27	28	29	30			24	25	26	27	28	29	30
														31						

March 11—11:30a.m.—1:00p.m. Speaker: Fred Hilterman “Seismic Attribute analysis for the Gulf of Mexico”	April 15—11:30a.m.—1:00p.m. Speaker: Richard Adams—Carr Resources. The Lower Woodbine Organic Shale of Burlenon and Brazos Counties, Texas: Anatomy of a New “Old” Play	Distinguished Speaker--Mark Papa
--	--	-------------------------------------

Calendar of Meetings and Events

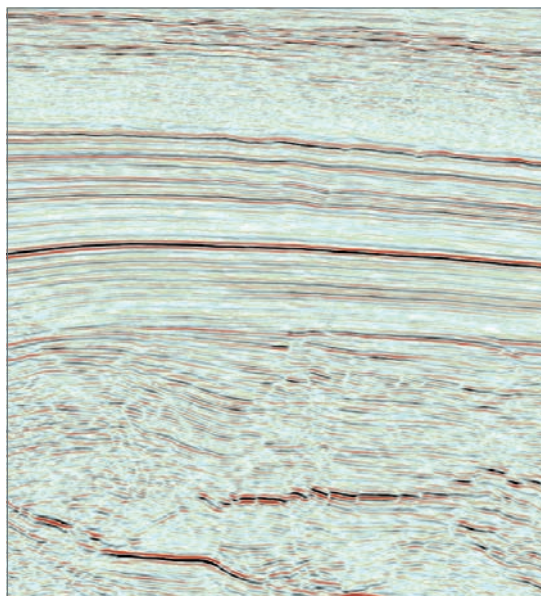
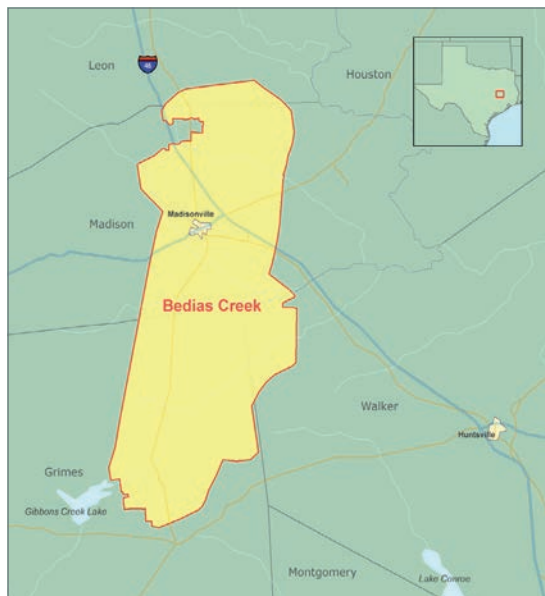
Calendar of Area Monthly Meetings

Corpus Christi Geological/Geophysical Society.....	Third Wed.—11:30a.m.
SIPES Corpus Christi Luncheons.....	Last Tuesday—11:30a.m.
South Texas Geological Society Luncheons.....	Second Wed—noon San Antonio
San Antonio Geophysical Society Meetings.....	Fourth Tuesday
Austin Geological Society.....	First Monday
Austin Chapter of SIPES.....	First Thursday
Houston Geological Society Luncheons.....	Last Wednesday
Central Texas Section of Society of Mining, Metallurgy & Exp.....	2 nd Tues every other month In San Antonio



Bedias Creek 3D

Madison, Grimes, Walker,
and Leon Counties, Texas



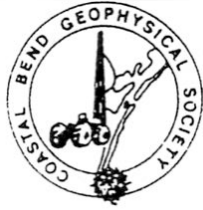
- 323 mi² of high-quality, high-fold data (110-fold) acquired using cableless **UNITE** crews and a dynamite source
- State-of-the-art processing, including 5D Interpolation and Orthorhombic Pre-Stack Time Migration
- Data now available

For more detailed information contact us:

Scott Tinley +1 832 351 8544 scott.tinley@cgg.com
Cheryl Oxsheer +1 832 351 8463 cheryl.oxsheer@cgg.com

cgg.com/multi-client





CCGS PRESIDENT'S LETTER

Well, here we are at the close of another successful year for the CCGS. It is truly an honor to have served as your President. I have been involved in the society since 2002. I thought I had a pretty good idea of how everything worked, but this year has been enlightening. We have a great group and the dedication of our Volunteers is tremendous. Thanks to everyone who contributed both large and small.

The luncheon speaker for this month is Mr. Mark G. Papa former/retired CEO of EOG Resources, Inc. Mr. Papa served as the Chief Executive Officer of EOG Resources Inc. from September 1998 to July 1, 2013. He will be speaking on how the emergence of unconventional oil and gas has impacted the energy industry and the US economy. Please join us at the Town Club May 20th for our final luncheon before the summer break. Our bar sponsor for this month is Gisler Brothers Logging Co., Inc. Thank you for your generosity.

Elizabeth Chapman with Flamingo Seismic Solutions has kindly agreed to sponsor our May Pint Night. Please come out and join us Tuesday, May 19th at 5:30 for our monthly happy hour. We have the back room at the Executive Surf Club booked for this event as well as every third Tuesday for the rest of the year.

Just a few reminders. The CCGS Fishing Tournament will be August 14th in Port Aransas, Texas. Please come out and help raise funds for the CCGS Scholarship Trust Fund. Also, keep an eye out for email announcements regarding the BBQ Kickoff in September.

Once again, I need to thank the CCGS Board of Directors and Committee Members for all of your support. I hope everyone had a fun and rewarding year. When my term started the price of oil was around \$92/bbl, and since then we have seen a 50% price reduction. Yea, I know. It's all my fault. Although our industry is once again in flux our Society remains fiscally healthy and active. These are exciting times for us. We have an expanding young member base, and our relationships with the local colleges is stronger than ever before. We have many exciting educational initiatives that are funded and ongoing. Our GCACS committee, headed by Dawn Bissell, is staffed and ready for the challenges ahead. I look forward to the next couple of years, and I know our Society will take advantage of this opportunity. I encourage all members to stay active and involved in the society. The CCGS is your society.

Thank you,

Leighton Devine

CCGS President

Performance You Can Count On

An acknowledged leader in today's exploration and production industry, EOG Resources looks ahead.

Annually, EOG is one of the most active drillers in the United States. We grow through the drill bit, rather than seeking major acquisitions or mergers to bolster our reserves and production. This unrelenting focus on organic production growth has proven successful because we have identified significant North American resource plays for tomorrow. Our creative, hardworking explorationists and those who support them utilize the latest technology available in the marketplace, adapting and modifying it to meet the challenges EOG faces. With a focus on returns, EOG continues to produce peer-leading financial and operational results.

In 2013, EOG became the largest onshore oil producer in the Lower 48, and we're still growing.

EOG Resources, Inc.

539 N. Carancahua
Suite 900
Corpus Christi, TX 78401-0908
361-883-9231
www.eogresources.com



AS GOOD AS OUR WORD TAP INTO OUR RESERVOIR



www.dawson3d.com

509 W Wall, Suite 800

Midland, Texas 79701

432-884-3000

800-D-DAWSON

Houston, Texas 713-917-6772

Denver, Colorado 303-723-0440

Oklahoma City, Oklahoma 405-848-7512

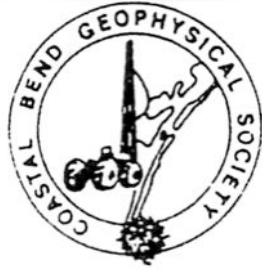
Michigan 248-448-9533

EXPERIENCE For over a half-century Dawson has helped its clients succeed. In both seismic acquisition and processing, we deliver high quality data that gets clear-cut results. From field equipment to software, we put the latest technologies into the hands of seasoned professionals who have geophysical knowledge specific to all major U.S. basins. Decades of acquiring data and imaging objectives to provide total subsurface picture. That's what our experience gives you.



Dawson Geophysical Company

Planning • Design • Acquisition • Processing • Results



CBGS President's Letter

News - CBGS Scholarship Golf Tournament - October 23, 2015. Oil prices hold about \$50/bbl. In March, 2015 US oil production dropped (36,000 bopd) for the first time since Nov 2014.

Business - Tom Harrington (EOG Geophysicist) "volunteered" to be VP of CBGS. Thanks Tom, it will be great to get a fresh perspective on society activities. CBGS still needs a volunteer to organize CBGS education events. This role takes little time, only is done once a year and it keeps you connected with the geophysical community. Let me know if you are interested. CBGS finalized the revenue sharing agreement with GSH for training courses. CBGS will get 10% of any attendee's registration fees, so please mention CBGS if you register for any GSH events. **Education** - - HGS Depositional System and Facies Variability in the Wilcox Group Core Workshop - Free(limited attendance) *State of Texas Advanced Oil and Gas Resource Recovery (STARR) Program*, Tuesday, May 5th, 2015, 9:00 a.m. - 3:00 p.m., Houston Research Center, 11611 West Little York Rd, Houston, Texas 77041 (713) 466-8346 - 2014 SEG Convention Technical Program Recording: Available at the following link - [SEG Convention Technical Program Recordings](#) - SEG has 450+ eLearning courses online from \$0.99 to \$150.00(most expensive I saw) <http://www.seg.org/professional-development/seg-on-demand>

Parting Thought - When you come to the end of your rope, tie a knot and hang on. - Franklin D. Roosevelt **Monthly O&G Statistics**

Seismic Crews - US Onshore	Current Month	Last Month	Difference	(Per SEG/Seismic Crew Reports Survey)
	Onshore/Offshore	Onshore/Offshore		
	44/22	47/21	-2	Mar
	Current Month	Last Month	Last Year - Monthly	(Per Texas RRC, last reported)
Texas Production	MMBO/BCF	MMBO/BCF	MMBO/BCF	
Oil	68.9	77.6	72.5	Jan
Gas	607	674	690	Jan
	Current Month	Yr to date - 2015	Yr to date - 2014	Jan
Texas Drilling Permits	923	2,949	5,367	Mar
Oil wells	239	699	1,508	
Gas wells	75	227	330	
Oil and Gas wells	556	1,878	3,303	
Other	9	42	42	
Total Completions	1,970	5,946	9,555	Mar
Oil Completions	1,547	4,518	8,864	
Gas Completions	305	859	902	
New Field Discoveries	6	10	10	
Other	28	96	129	

Lonnie Blake—CBGS President

Corpus Christi Geological Society & Coastal Bend Geophysical Society

LUNCHEON MEETING ANNOUNCEMENT

Wednesday, May 20, 2015

- Location:** Corpus Christi Town Club, 6th Floor (800 North Shoreline)
- Student Sponsor:** Core Lab (Juan Cabasos) and the CCGS
- Time:** 11:30 a.m. Bar, Lunch follows at 11:45 a.m., Speaker at Noon.
- Cost:** **\$25** (a \$3 surcharge if no reservation). No-shows will be billed.
- Bar:** Cash Bar or Sponsor TBA – email Allison@aaoperating.com
- Reservations:** Please by Monday before – email Allison@aaoperating.com
-

The Effect Of Shale Plays On The Industry and The US Economy

By Mark Papa

The emergence of unconventional oil and gas will have tremendous impacts on both the energy industry and the US economy. The outlook for unconventional gas is exceptionally bright—with expectations for relatively low future natural gas prices, enough supply to meet domestic needs, and surplus enough to export to other countries. While the unconventional oil story continues to unfold and evolve, an abundance of domestic crude oil is expected. And, thus, an opportunity to not only significantly reduce the country's dependence on oil imports, but to also increase energy security.

ABOUT OUR PRESENTER

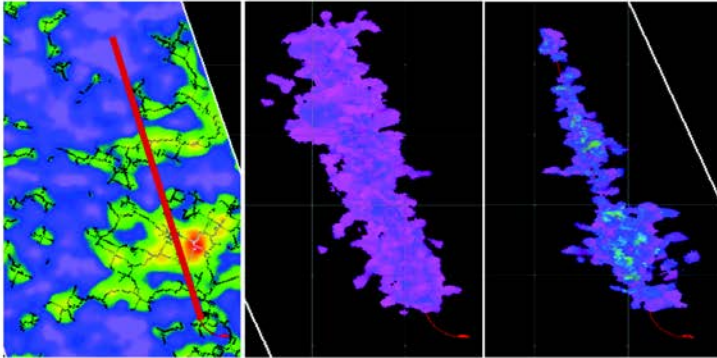
Mr. Papa is currently a Partner of Riverstone Holdings. He is based in Houston. Prior to joining Riverstone in 2015, Mr. Papa was Chairman and CEO of EOG Resources from 1999 to 2013. Mr. Papa worked 32 years for EOG in various management positions. Prior to that, he worked 13 years for Conoco in various engineering and management positions. In February 2013, the Harvard Business Review denoted Mr. Papa as one of the 100 Best Performing CEO's in the World and ranked him as the Best in the US Energy Industry. Additionally, Institutional Investor magazine repeatedly ranked him as the Top Independent E&P CEO. Mr. Papa also serves on the board of Oil States Industries and Casa de Esperanza. He received his BS in Petroleum Engineering from the University of Pittsburgh and an MBA from the University of Houston.

Mark has ties to South Texas. Mark worked and lived in South Texas for Conoco. Mark still has a condo in Port Aransas where he is an avid fisherman. Mark's mother in law still lives in Corpus Christi.

SPONSORS

the ACOUSTIC VIEW

BEFORE. DURING. AFTER.



Before: Quiet Time recording before the frac images natural fractures and faults. **During:** Pumping time recording images the microseismically active volume during stimulation. **After:** Quiet time recording post-frac reveals the microseismically active production volume.

For more information:

www.globalgeophysical.com/MONITORING or
Contact us at MONITORING@globalgeophysical.com

Global Geophysical's innovative approach to microseismic provides direct imaging of acoustic activity in the subsurface. This allows us to identify areas or zones that are acoustically active due to naturally-occurring activity, hydraulic stimulation or production-related activities. Our microseismic results can be presented as 3D attributes such as semblance, as discrete volumes of acoustic activity or as Tomographic Fracture Images™. A key and differentiating capability of our approach is that we capture acoustic activity before, during and after stimulation; providing you with knowledge of natural fractures and faults, stimulated rock volume and the active production volume. This Before, During and After approach allows you to discern the impact of both natural and induced fractures and to determine the cumulative affect they have on actual well productivity.

Our seismic solutions include data acquisition, microseismic, data processing, reservoir geophysics and integrated interpretation & consulting services.

Global Geophysical Services, Inc.
tel +1 713-972-9200 www.globalgeophysical.com

Global
Geophysical Services

Gulf Coast Association of Geological Societies

65th Annual Convention - September 20-22, 2015



George R. Brown Convention Center, Houston, TX

www.gcagshouston.com

continued on page 15



GULF COAST ASSOCIATION OF GEOLOGICAL SOCIETIES

www.gcags.org



1. 65th Annual Convention and Exhibition hosted by the Houston Geological Society, Sept 20-22, 2015, George R. Brown Conv. Center, Houston, Texas

Paper themes:

- New Oil and Gas Discoveries
- Un-Conventional Plays
- Development Field Studies
- GOM Shelf and Onshore Plays
- Salt Tectonics and Traps
- Mexico and Caribbean Plays
- Gulf of Mexico Deepwater
- Environmental Geology
- Coastal Geology and Surface Impact
- Geology-Geophysics-Engineering
- Portfolio Management
- Geophysical Technology

Call for Papers webpage: www.gcagshouston.com or contact Linda Sternbach, Technical Program Chair, at linda.sternbach@gmail.com.

2. Society Representative on the GCAGS Board of Directors: The Gulf Coast Association of Geological Societies (GCAGS) has 13 affiliated societies. The affiliated societies are the core of the GCAGS. The President of each affiliated society (or his or her representative) is a voting member of the GCAGS Board of Directors. As such, the societies have a strong voice in the decisions made by the GCAGS Board of Directors.

3. AAPG Advisory Council Representation: The Gulf Coast Section is the largest AAPG Section with close to 9000 members. Because of its size, the GCAGS has two Advisory Council Section Representatives while the other Sections have only one. "The AAPG Advisory Council serves in an advisory capacity to the AAPG Executive Committee. They report on matters involving ethics and discipline, long-range planning, constitutional review, nominations for officers and honors and awards and other special projects as requested by the Executive Committee."

4. GCAGS Student and Faculty Grants: Each year the GCAGS awards \$20,000 in scholarship grant money to approximately 20 deserving graduate or PhD students in the Gulf Coast area. In addition, the GCAGS awards \$10,000 to two faculty members to support their research on Gulf Coast geology.

GCAGS PRESIDENT Charles Sternbach 281-679-7333 carbodude@gmail.com	GCAGS VICE PRESIDENT Brent Hopkins 361-884-8824 brenth@suemaur.com	GCAGS PAST PRESIDENT Mary Broussard 337-354-5041 Mary_Broussard@fmi.com
2015 GCAGS CONVENTION GENERAL CHAIRMAN Larry Bartell 713-781-6974 ldbartell@legendsexpl.com	GCAGS TREASURER Steve Hill 713-880-4343 steve.hill@LSDecker.com	GCAGS EXECUTIVE DIRECTOR Kate Kipper 512-925-1200 gcags.mail@gmail.com

5. GCAGS Scholarship Fund Matching Program: The GCAGS periodically initiates a Scholarship Fund-Matching Program for the societies. This is a great opportunity for the societies to double the value of donations going to their scholarship foundations, and in turn, help deserving geoscience students in their local areas. The total value of the donations from the GCAGS is \$195,500.

6. Travel to Student Chapter Leadership Summit: Each year the GCAGS provides \$1000 in support for student travel to the AAPG Student Chapter Leadership Summit. Summit attendees participate in training, interact with AAPG leadership, and establish mentoring relationships.

7. Advertising: Every year each GCAGS Affiliated Society receives a free ¼ page of advertising space (black & white) in the AAPG Explorer.

8. Sponsorship of Section Level Imperial Barrel Award Competition: If sufficient corporate funding is not raised, the GCAGS will donate \$5000 (on an annual basis) to sponsor the Gulf Coast Section IBA competition. The GCAGS also volunteers to host the Gulf Coast Section university IBA teams and administer the entire event including one-day training for all participants. The IBA program is hugely popular with the students and industry support has grown immensely over the last few years. Two Gulf Coast Universities have won the Global IBA competition: The University of Texas, Austin (1 victory), and the University of Louisiana, Lafayette (2 victories).

9. Honors and Awards: Every year members of GCAGS' affiliated societies are nominated by their peers for awards for their service and accomplishments at the Society, Section and the National AAPG levels. Winners are recognized with an award plaque at the GCAGS Convention.

10. Teacher of the Year Award: In addition to an award plaque, the GCAGS gives the winner of the Owen R. Hopkins Outstanding Earth Science Teacher Award \$2000 (\$1500 for personal use and \$500 for use by their school) and an expense paid trip to the Annual GCAGS Convention.

11. GCAGS Transactions: Professional registrants for the GCAGS Convention receive an electronic version (CD, flash drive) of the GCAGS *Transactions* with their registration fee.

12. GCAGS Journal: The *GCAGS Journal* is a peer-reviewed premier publication dedicated to Gulf Coast geoscience research and concepts, Contact Barry J. Katz BarryKatz@chevron.com

13. WWW.GCAGS.ORG: The GCAGS website is linked to local society websites. New material, comments, updates, etc. are welcome.

14. Social Media, ability to send out updates on GCAGS events, contact Dianna Phu dianna.phu@intecsea.com



6th Annual CCGS Saltwater Fishing Tournament



When: Friday, August 14, 2015

Where: Roberts Point Pavilion in beautiful Port Aransas, TX

Why: Raise money for the CCGS Scholarship Trust Fund

Please Come Join Us!!!!

continued on page 18



6th ANNUAL CORPUS CHRISTI GEOLOGICAL SOCIETY SALTWATER FISHING TOURNAMENT



The 2015 Saltwater fishing tournament will be held Friday, August 14, 2015 for you and your guests at the **Roberts Point Pavilion** located in Port Aransas, Texas. *Please note the venue change.* We invite you to join us in support of the **CCGS Scholarship Trust Fund**.

Fishing Hours will be from:

Offshore Division 12:01 AM to 7:00 PM Friday, August 14, 2015

Bay Division 6:00 AM to 6:00 PM Friday, August 14, 2015

Dock/Ramp departure time:

Offshore Division Boats may leave after Captain's Meeting Thursday, August 13, 2015

Bay Division 5:00 AM Friday, August 14, 2015

Weigh-In Time & Location will be:

Offshore Division 4:00 PM to 7:00 PM Friday, August 14, 2015 at the Roberts Point Pavilion

Bay Division 3:00 PM to 6:00 PM Friday, August 14, 2015 at the Roberts Point Pavilion

REGISTRATION:

Early Registration will be by mail/e-mail with on-site registration available at the Roberts Point Pavilion from 3:00 PM to 7:00 PM Thursday, August 13, 2015 before the Captain's Meeting.

DOCK PARTY & CAPTAIN'S MEETING:

At least one team member must check-in and attend the Captain's meeting Thursday, August 13, 2015 at the Roberts Point Pavilion. Dinner and drinks will be available Thursday and Friday night for all anglers. All anglers are encouraged to participate.

COST:

Early tournament registration fee per Team/boat on or before July 24, 2015:

Offshore Division: \$375.00

Bay Division: \$300.00

Tournament registration fee per Team/Boat during Captain's Meeting:

Offshore Division: \$425.00

Bay Division: \$350.00

TOURNAMENT DINNERS:

Shrimp Boil will be served from 6:30-8:00 PM August 13, 2015

Dinner will be served from 6:30-8:00 PM the day of the tournament.

TEAM AWARDS:

The awards presentation for the Bay Division will start at/about 7:00 PM. Awards for the Offshore Division will start at/about 7:30 PM. **Cash Prizes will be awarded this year for Heaviest Stringer (Bay Division) and Offshore Grand Champion (Offshore Division). Amount TBD.** The following categories will be presented to 1st & 2nd place teams:

Bay Division:

Heaviest Stringer
(1 Red Drum, 1 Speckled Trout, 1 Flounder)
Heaviest Speckled Trout
Heaviest Red Drum (Redfish)
Heaviest Flounder
Heaviest Black Drum

Offshore Division:

Offshore Grand Champion
Catch and Release Champion
Heaviest Wahoo
Heaviest Dolphin (Dorado/Mahi)
Heaviest Blackfin Tuna
Heaviest Yellowfin Tuna
Heaviest King Mackerel (Kingfish)

DOOR PRIZES:

Door prizes will be given away immediately after each Division's awards. **You must be present to win.**

FISH POTS:

Offshore and Bay Division fish pots are available and payments can be submitted via your registration forms, or at the on-site registration. **15% OF ALL FISH POTS WILL GO TO THE CCGS Scholarship Trust Fund.**

CONTACT:

Leighton Devine 361-510-8872

CCGS Saltwater Fishing Tournament Rules

This year's tournament will be open to any and all Oilfield affiliated members and their guests. This is a **TEAM TOURNAMENT** with both bay and offshore fishing divisions. In hopes of accommodating more anglers we have modified the rules for both fishing divisions. We will review the rules during the Captain's Meeting.

OFFSHORE AND BAY DIVISIONS:

- All fish must be caught on Friday, August 14, 2015 during specified tournament fishing hours.
- No contestant will be eligible for awards unless registered in advance. Please make all angler substitutions by August 13, 2015 during the Captain's meeting.
- Changing of fishing divisions must be done by Thursday, August 13, 2015 during the Captain's Meeting.
- **Live, Dead and Artificial baits are legal.** All fish must be caught by rod and reel only. The use of trotlines, seines, dynamite, spear fishing, or any other illegal means of fishing are strictly prohibited. All Federal, and State recreational fishing and Boating Laws apply.
- **Weigh-In Station:** All fish weighed must be legal according to Federal and State game laws. Any team/boat attempting to weigh a fish that is not legal will be disqualified. Fish that are frozen, gutted, or otherwise mutilated will not be eligible and the team attempting to weigh such a fish will be disqualified. All fish are subject to further inspection if deemed necessary by the Weighmaster. Please be aware of your fishing division's weigh-in time as no fish will be weighed in before or after each division's allotted weigh-in time. **No sorting or substituting fish** while in the weigh-in line.
- All contestants are personally/solely responsible for any fines/actions resulting from any violations of Federal or State game laws, boating laws, or any other law relevant to boating and/or fishing. You are strongly encouraged to practice safe boating and use common sense.
- **ONE TEAM MEMBER MUST CHECK-IN AND ATTEND THE CAPTAIN'S MEETING THE DAY BEFORE THE TOURNAMENT AT THE EVENT TENT IN THE ROBERTS POINT PAVILION. THE OFFSHORE DIVISION'S OBJECT OF THE DAY, AND CATCH & RELEASE SHEETS WILL BE AVAILABLE AT THIS TIME. FISH POTS WILL ALSO BE AVAILABLE TO ENTER.**
- Only one boat per team is allowed, any team found fishing from multiple boats will be disqualified.
- Transfer of fish from one boat to another is not allowed.
- Teams are subject to disqualification from the tournament, and may be administered a polygraph test, in the event of any violation of tournament rules or suspected of foul play, including the weighing-in of fish which appear to have been caught prior to the day of the tournament. Contestants will be responsible for the cost of polygraph testing if they fail.
- The Tournament Chairman or Weighmaster will act as judge, and will handle all disputes or interpretations of the rules. **THE DECISIONS OF THE JUDGES ARE FINAL!**
- **In case of bad weather and tournament cancelation, registration fees and 15% of fish pots will be donated to the CCGS Continuing Education Programs. Tournament will not be rescheduled. The CCGS Fishing Tournament Board will make any/all decisions regarding tournament cancelation during the Captain's Meeting Thursday, August 13, 2015.**

OFFSHORE DIVISION:

- Boats entered in the Offshore Division may leave the dock/boat ramp after the Captain's Meeting, with lines in the water no earlier than 12:01 AM. **YOU MUST BE IN THE WEIGH-IN LINE** (visible to the tournament Weighmaster) no later than 7:00 PM. **NO EXCEPTIONS!**

Offshore division dock/ramp departure time: After Captain's Meeting

Offshore division fishing hours: 12:01 AM to 7:00 PM

Offshore division Weigh-In time: 4:00 PM to 7:00 PM

- **BOAT CHARTERS ARE ALLOWED. IGFA RULES APPLY, WITH ONE RULE MODIFICATION REGARDING ANGLING REGULATIONS. DECKHANDS ARE ALLOWED TO REMOVE ROD, STRIKE AND HOOK FISH THEN PASS THE ROD TO THE ANGLER.**

CCGS Saltwater Fishing Tournament Rules

OFFSHORE DIVISION: (cont.)

- **All Billfish will be released.** To qualify for catch and release points, a Polaroid picture, color printed photo, or a digital image from a camera clearly showing both the dorsal fin of the fish, and the object of the day must be present, and visible. The photo/digital image and Catch & Release Sheet must be submitted to the weigh station at the time of weigh-in. All Billfish must remain in the water. Photos showing the fish in the boat WILL NOT be eligible for points, and will disqualify the team/boat. All photos submitted must have the boat/team name as well as the date and time of catch on the back of the photo. In order to receive points for a blue marlin, the picture must clearly show it is a blue marlin; otherwise the fish will be scored as a white marlin. **LAPTOP WITH A USB CONNECTION WILL BE AVAILABLE; IT IS THE BOAT/TEAM'S RESPONSIBILITY TO PROVIDE ANY NECESSARY CABLES OR CORDS TO UPLOAD DIGITAL IMAGES.**
- **Offshore Catch & Release points are as follows:**

Blue Marlin 500 Points
White Marlin 300 Points
Sailfish 200 Points
- **All boats registered in the tournament will act as committee boats.** All catch and release fish must be reported on VHF channel 68, stating the Boat name, species of billfish released, and time of the release. When the catch and release report is received by another boat in the tournament, the receipt of time will be recorded. If you are unable to reach another boat in the tournament to record release, you may proceed to the weigh-in and report the catch and release. It is important to report as soon as possible as the time the report is received by another tournament boat or the Weigh master is the time recorded. A release sheet will be provided to all boats. It is the sole responsibility of the team/boat to turn in their release sheet to the weigh master during weigh-in.
- All other eligible offshore fish may be weighed in and scored (1) point per pound. Eligible offshore fish species include: **Wahoo, Dolphin (Dorado/Mahi), Yellowfin Tuna, Blackfin Tuna, & King Mackerel (Kingfish).** Only these fish species will be weighed in. **EACH BOAT/TEAM MAY ONLY WEIGH-IN ONE FISH PER ELIGIBLE SPECIES.** Remember Weigh-In time for the Offshore Division is from 4:00 PM to 7:00 PM.
- In the event of a tie, the first team to accumulate points by earliest time will be declared the winner.

BAY DIVISION:

- Boats entered in the Bay Division may not leave the dock/boat ramp earlier than 5:00 AM with lines in the water no earlier than 6:00 AM. **YOU MUST BE IN THE WEIGH-IN LINE** (visible to the tournament Weigh Master) no later than 6:00 PM. **NO EXCEPTIONS!**
 - Bay division dock/ramp departure time: 5:00 AM
 - Bay division fishing hours: 6:00 AM to 6:00 PM
 - Bay division Weigh-In time: 3:00 PM to 6:00 PM
- Bay Division Teams may launch and fish anywhere on the bays, as long as the weigh-in deadlines are made at the Island Moorings Marina. No Bay Division Team is allowed to fish past the end of the jetties, or anywhere offshore. Wade fishing is allowed.
- Each Team member is allowed to have only one line in the water at any time during tournament fishing hours.
- All fish must be caught by rod and reel in adherence to Texas State Law.
- **FISHING GUIDES ARE ALLOWED.** However, all fish weighed in must be caught by registered anglers.
- Eligible Bay Division fish species include: **Speckled Trout, Red Drum (Redfish), Flounder, & Black Drum.** Only these fish species will be weighed in. No oversized, tagged Redfish will be weighed in. The Weigh-in of any undersized fish will disqualify the team. Remember Weigh-In time for the Bay Division is from 3:00 PM to 6:00 PM.
- **EACH TEAM/BOAT MAY ONLY WEIGH-IN ONE FISH PER ELIGIBLE SPECIES.**
- In the event of a tie by fish weight, length and girth will determine the winner.



6th ANNUAL CORPUS CHRISTI GEOLOGICAL SOCIETY SALTWATER FISHING TOURNAMENT



TEAM REGISTRATION FORM

Tournament registration fee on or before July 24, 2015: Offshore Division: \$375.00, Bay Division: \$300.00. Tournament registration fee during on-site registration: Offshore Division: \$425.00, Bay Division: \$350.00. **Registration fee includes Team entry into the tournament, Dinner, awards, tournament t-shirt, & a chance to win door prizes.** Additional dinner tickets: \$20.00 per person. **Official Tournament Fishing Shirts: \$45.00 (pre-order only).** By participating in the fishing tournament you are helping to support the CCGS Scholarship Trust Fund. We look forward to seeing you there.

TEAM REGISTRATION:

Boat/Team Name: _____		Division: Offshore _____	Bay _____ (Check one)
TX No.: _____	Make: _____	Length: _____	
Angler #1: _____ <i>(Team Captain)</i>		Company: _____	
Address: _____			
Phone: _____		Email: _____	
Angler #2: _____		Angler #3: _____	
Angler #4: _____		Angler #5: _____ <i>(Applies for Offshore Division only)</i>	
<p><i>*Please note Bay Division teams may have up to 4 anglers, and Offshore Division teams may have up to 5 anglers.</i></p> <p>By entering the "CORPUS CHRISTI GEOLOGICAL SOCIETY SALTWATER FISHING TOURNAMENT" We hereby waive all liability claims against tournament sponsors, hosts, officials and all persons associated with said tournament. We acknowledge that we have received a copy of, understand and agree to abide by all tournament rules, and understand my team will be disqualified for violation of any rules. We agree to abide by tournament official's rulings. We understand our entry fee is non-refundable.</p>			
Team Captain: _____		_____	_____
<i>Sign</i>		<i>Date</i>	

FISH POTS : (optional)

To participate in the fish pots please indicate which categories the team wants to enter. Teams will be able to enter into the fish pots until the end of the Captain's Meeting 7:00 PM August 13, 2015. **15% of the fish pots will be donated to the CCGS Scholarship Trust Fund.**

Bay Division

Heaviest Team Fish				
Red Drum	Speckled Trout	Flounder	Black Drum	Spot Pot
\$100.00	\$100.00	\$100.00	\$100.00	\$100.00

Offshore Division

Total Catch and Release points			Heaviest Team Fish				
Blue	White	Sail	Wahoo	Dolphin	Blackfin Tuna	Yellowfin Tuna	Kingfish
\$250.00	\$250.00	\$250.00	\$100.00	\$100.00	\$100.00	\$100.00	\$100.00

Payment Information:

Email with Credit Card Authorization Form to ldevine@suemaur.com or,

Please enclose registration form with a check payable to:

Registration fee: _____

(Registration fee does not apply for Platinum or Gold sponsors)

Corpus Christi Geological Society
C/O Suemaur Expl. & Prod.
1000 Frost Bank Plaza
802 N. Carancahua St.
Corpus Christi, Texas 78401

Fish Pot total: _____

Additional Dinner Tickets: _____

Tournament Fishing Shirt: _____

Sizes: XXL _____ XL _____ L _____ M _____

Total Amount: _____



6th ANNUAL CORPUS CHRISTI GEOLOGICAL SOCIETY SALTWATER FISHING TOURNAMENT



SPONSORSHIP FORM

The Corpus Christi Geological Society (CCGS) is pleased to announce the 6th annual saltwater fishing tournament. The fishing tournament is being held Friday August 14, 2015 in Port Aransas, at the Roberts Point Pavilion, and will consist of two fishing divisions (offshore/bay). The goal of the CCGS is to conduct a quality industry event that more importantly provides the CCGS with funds to support the Continuing Education and Scholarship Programs. Sponsorships are needed to maintain these programs, and your sponsorship will continue to allow the CCGS to provide Educational initiatives.

Registration can be made until August 13th during the Captain's Meeting, with the tournament on August 14, 2015. We look forward to seeing you there.

Name of Business/Organization: _____

Contact Person: _____ Phone: _____

Address: _____

Sponsorships:

- \$2000.00 & up Platinum Sponsor**
Sponsorship recognition of Business/Organization at Tournament, and on tournament t-shirts
Plus **two** team entry fees, **8 Official Tournament Fishing Shirts for teams**, and \$300 Fish pot credit.
- \$1000.00 Gold Sponsor**
Sponsorship recognition of Business/Organization at Tournament, and on tournament t-shirts
Plus **one** team entry fee, and **4 Official Tournament Fishing Shirts for team.**
- \$500.00 Silver Sponsor**
Sponsorship recognition of Business/Organization at Tournament, and on tournament t-shirts
- \$250.00 Bronze Sponsor**
Sponsorship recognition of Business/Organization at Tournament
- \$100.00 Door Prize Sponsor**
Sponsorship recognition of Business/Organization at Tournament
- Donation of Services/Time** *(Please contact Fishing Tournament Committee Member)*
Sponsorship recognition of Business/Organization at Tournament

*** ALL SPONSORS ARE WELCOMED TO DISPLAY THEIR OWN COMPANY BANNERS THURSDAY, AND FRIDAY DURING THE EVENT.**

Please mail this form along with a check payable to:

Corpus Christi Geological Society

C/O Suemaur Expl. & Prod.
1000 Frost Bank Plaza
802 N. Carancahua St.
Corpus Christi, Texas 78401

For more information regarding sponsorship please contact:
Patrick McCullough 361-876-7881
Leighton Devine 361-510-8872

continued on page 23



Corpus Christi Geological Society

Credit Card Authorization Form

Please Return Authorization Form to Leighton Devine via fax (361) 884-9623 or e-mail to ldevine@suemaur.com

Event Sponsorships: Platnum: \$2000 Gold: \$1000 Silver: \$500 Bronze: \$250 DoorPrize: \$100

Team Entry Fee: Bay Division: \$300 Offshore Divison: \$375

***** IF PAYING BY CREDIT CARD PLEASE ADD 5% CONVENIENCE FEE *****

Total Invoice Amount: _____

Company Name: _____

Name on Credit Card: _____

Billing Address of Credit Card: _____

Contact Phone Number: _____

Fax Number or Email Address: _____

Credit Card Number: _____

Type of Card: VISA MASTERCARD AMEX DISCOVER

Expiration Date: ____/____

Security Code: _____

Authorized Signature: _____ Date: _____

Printed Name: _____

DON'T FORGET TO SEND IN THE TEAM REGISTRATION FORM

The Corpus Christi Geological Society awarded \$10,000 in scholarships to 14 local students in April 2015

TAMU-CC, TAMU-K, and Del Mar were all represented with scholarship recipients.



Texas A&M Corpus Christi Students: Leighton Devine, CCGS President; Nargiz Dadashova, Meldina Martinez, and Brittney Tamborello. Not pictured- Allyse Sanchez



Del Mar Students: Leighton Devine, CCGS President; Kasondra Maleski and Jason Martinez



Leighton Devine, CCGS President; Noelia Arredondo, Holden Butler, John Dabney, Sarah Dillon, Blanca Garza, Justin Kelley, James Quisenberry, and Dawn Bissell CCGS Scholarship Chairman. Not pictured-Payton Campbell

The CCGS Scholarship fund received donations from member contributions, the CCGS Fishing Tournament and the Corpus Christi Oilman's Tennis Tournament. These donations are vital to allow the committee to fund the scholarships for our deserving students. Every donation is very much appreciated.

The next awards will be given in November 2015 for the Spring 2016 semester.

Dawn S. Bissell – Scholarship Committee Chairman

Brent Hopkins – Vice Chairman

Leighton Devine – CCGS President

Beth Priday – Member

Patrick Nye – Secretary/Treasurer

Bob Critchlow – Member

JR Jones -- Member

sponsors



Winn Exploration Co., Inc.

Actively Seeking High Quality
Drilling Prospects

Contacts:

Mike Layman (Geophysicist)	361-844-6922
Tom Winn (Geologist)	361-844-6992
Southern Winn (Geologist)	361-844-6998

800 North Shoreline Blvd.
19th Floor, North Tower
Corpus Christi, Texas 78401

Office: 361-844-6900 Fax: 361-844-6901

WEL-LAB

HYDROCARBON LOGGING SERVICE



Operating in South Texas and Gulf Coast since 1961

Contact: Mike Bullard

P.O. Box 1011

Kingsville, Texas 78364

361-221-9717

Email: md_bullard@sbcglobal.net

A Great Place For Business

In the heart of the Business District
Broadway at Leopard

- Onsite Management
- Conference Room
- Deli & Vending Room
- Security Card Access
- High Speed Elevators
- View of Corpus Christi Bay

COMMITTED TO EXCELLENCE
Yesterday • Today • Tomorrow

The
600
BUILDING

Contact
Ellen Blasingame
698-6000

ecblasingame@netscape.net





CBGS GOLF TOURNAMENT

Coastal Bend Geophysical Society
NorthShore Country Club
October 23, 2015
12:30 p.m. Shotgun Tee Time
Four-Man Scramble
100 Player Limit * Sign up Early



Name _____
Email _____
Company Name _____
Address _____
City, State, Zip _____
Phone _____
____ Yes, Please Place on a Team
____ I want to be on a Team with: (list below)
Player 2: _____
Player 3: _____
Player 4: _____
_____ \$100 per Golfer
_____ \$400 per Team (4 players)
_____ Sponsorship Total

_____ **TOTAL AMOUNT DUE**

PAYMENT INFORMATION

____ Check Enclosed
Make Checks payable to:
Coastal Bend Geophysical Society
c/o Fermin Munoz
619 E. Broadway
Portland, TX 78374
361-960-1126
FMunoz04@hotmail.com

Sponsorships

___ Golf Beverage Cart \$700 ea. _____
___ Golf Holes (18) \$200 ea. _____
___ Longest Drive
(2) \$100 ea. _____
___ Closest to the Pin
(2) \$100 ea. _____
Door Prize Sponsor _____

Total Sponsorship \$ _____

NorthShore Country Club

801 E. Broadway St.

Portland, TX 78374

Entry Fee Includes:

- Green Fees
- Range Balls
- Carts
- Beverages on the Golf Course
- Door Prizes
- Dinner Buffet

**Corpus Christi Geological Society /
Coastal Bend Geophysical Society
Luncheon Meeting
March 11, 2015**

**Seismic Attribute Analysis
for the Gulf of Mexico***

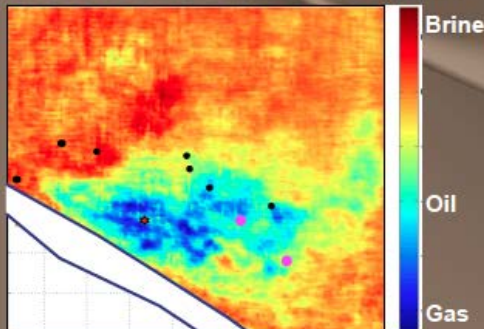
*Based on PhD Research
Zhengyun (Jenny) Zhou

Fred Hilterman
Chief Scientist - Geokinetics Processing & Integrated
Reservoir Geosciences
Distinguished Research Professor – University of Houston




**Reservoir limits after
25 years of production.**

**Quantifying Seismic Attributes
to Reduce Risk**



Continued on page 30C


SPONSORS



Nueces Energy, Inc.
P.O. Box 252
Corpus Christi, Texas 78403
Office: (361) 884-0435
Fax: (361)-654-1436
www.nuecesland.com

Nueces Energy, Inc. is a complete land services company in the business of providing professional landmen and project management to various energy related jobs primarily in the oil and gas industry.

With over 30 years of industry experience, we specialize in determining surface and subsurface ownership and negotiating and acquiring contracts, rights of way agreements, and easements to provide our clients with the legal right to explore and develop oil and gas resources. We provide a full service land company capable of managing any project no matter how large or small.



THUNDER EXPLORATION, INC.
Celebrating 30+ years of prospect generation and exploration in the following South Texas plays and trends.

Frio	San Miguel	Edwards
Jackson	Austin Chalk	Pearsall
Yegua	Eagle Ford	Sligo
Wilcox	Buda	Cotton Valley
Olmos	Georgetown	Smackover

Thunder is currently seeking non-operated working interest participation in projects and prospects.

Contact Walter S. Light Jr.
President/Geologist
713.823.8288
EMAIL: wthunderx@aol.com

Headington Energy Partners, LLC



902 North Tower – 500 N. Shoreline Blvd. – Corpus Christi, Texas
Phone: (361) 885-0110



Objective

Seismic Attribute Analysis for GoM

Technical Aspect

Borehole-to-seismic quantitative calibration of seismic attributes for estimating pore fluid.

- Fluid factor (ΔF) - boundary attribute
- Poisson impedance (PI) - layer attribute
- Lambda-rho ($\lambda\rho$) - layer attribute

Field Application

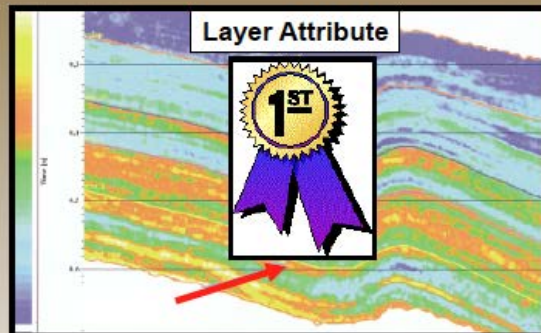
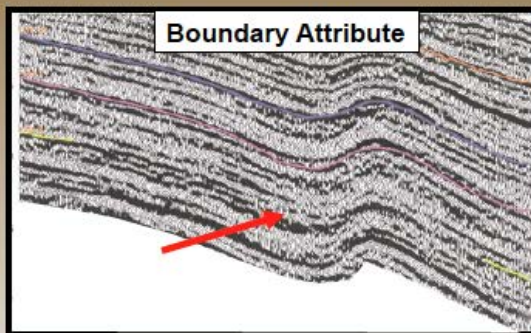
Map gas and oil reservoirs in a depleting field using the 3 seismic attributes.

Boundary attribute ... ex. PSTM amplitude

Layer attribute ... ex. Inversion: Acoustic Impedance



Boundary vs. Layer Attributes



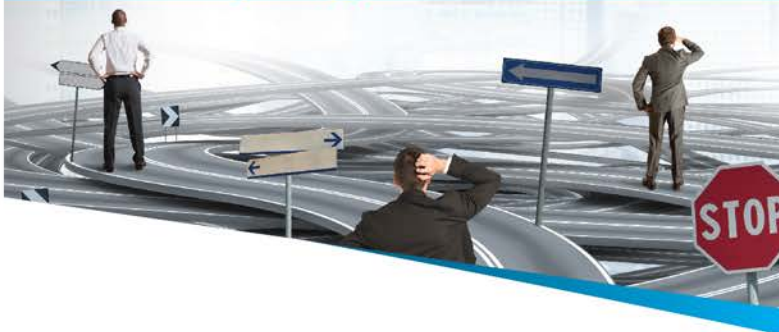
- Channel hidden on conventional seismic while inversion with low-frequency better images channel.
- Impedance (layer attribute) is more appropriate than seismic reflections (boundary attribute) for quantitative analyses.
- Is this always true?

What if boundary attributes are calibrated to geology?

Latimer, 2000 TLE

Licensing Data?

Don't Let Tape Copy Costs - Drive Your Decision



NEGOTIATE
your tape copies of field data
BEFORE signing contract.

OUR SERVICES

- Onshore and OBC Controlled Amplitude & Controlled Phase (CA/CP) Processing
- Surface Consistent Processing
- Seamless Multi-Survey Merge
- Gather Conditioning with AVO Attributes
- Inversion and Fluid / Lithology Prediction

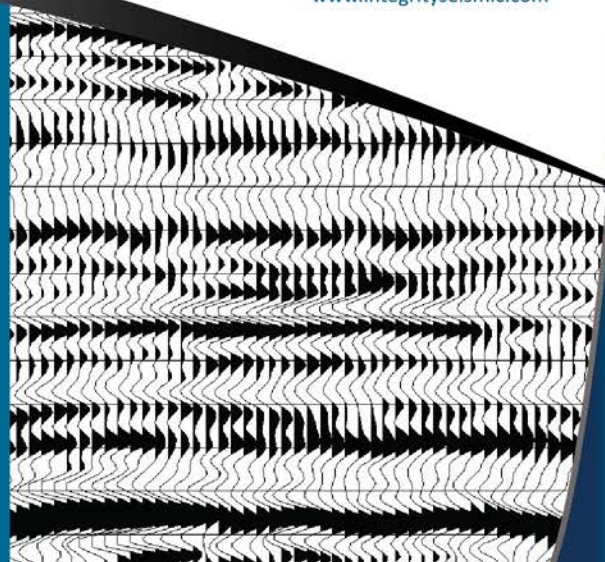
SENIOR PROCESSING GEOPHYSICISTS

- Daniela Smoleanu / Partner
- Karen Chevis-McCoy / Partner
- Steven Larson / Partner

INTEGRITY
SEISMIC SERVICES
(713)357-4706
www.integrityseismic.com

Zane Swope
President - Partner
(713)357-4706 Ext 7006
(281)635-9162 (Cell)
zswope@integrityseismic.com

James Bloomquist
Business Development Manager
(713)357-4706 Ext 7008
(281)660-9695 (Cell)
Jbloomquist@integrityseismic.com



What are your well costs?

\$3 MM, \$5 MM, \$10 MM


100 Square miles of true
CA/CP PSTM re-processing
≈ **\$150,000**

100 Square miles of tape
copy charges
≈ **\$20,000 - \$40,000**

DON'T YOU OWE IT

to **YOURSELF** and
YOUR COMPANY


to have the best image
before drilling?



Outline

Seismic Attribute Analysis for GoM

- **Attribute list**
- Pore-fluid attributes
- Boundary attribute: Fluid factor
- Well-to-seismic calibration
- Seismic 3D field study
- Conclusions



Sheriff's Comments on Attributes

Attribute
Seismic time, amplitude, frequency, and/or attenuation; from pre-stack or post stack data.

Early Qualitative Attributes
1973 Direct Detection Symposium: Miller Quarles presented numerous processing attributes to enhance hydrocarbon detection; in response to a question about the "scientific basis of all these attributes", he responded, "we don't know yet, but remember, we invented them."

Today ... Quantitative Interpretation
QI involves transforming attributes, such as Miller's, to petrophysical properties (porosity, **pore-fluid saturation**, lithology, etc.) by calibrating with local crossplots, trend statistics or other procedures from well control.

Conventional Wisdom (?)
Reflection coefficients are mainly qualitative **boundary** attributes that are normally converted into quantitative **layer** attributes by inversion.

Let's examine familiar attributes!

Sheriff, 2002, Dictionary

Continued on page 34

SPONSORS

CHARGER EXPLORATION

Michael L. Jones
President/Geologist

Onshore Gulf Coast Prospect Generation and Consulting

1001 McKinney Street, Suite 801 Houston, TX 77002
Ofc: 713.654.0080 Cell: 713.398.3091
Email: mjones@chargerexploration.com
www.chargerexploration.com

Serving Corpus Christi for over 20 years

 **mail express**
501 S. Tanchua St.
Corpus Christi, TX 78401

- We process 1st class mail with a direct discount to you
- No meter procedure change except for the amount you meter your envelopes

CALL 888-4332 for details - Ask for Anne

That old gas kick could be your next discovery!

Characterization of Unconventional Reservoirs

Traditional methods of core analysis cannot yield acceptable results when applied to unconventional reservoirs such as gas shales, tight gas sands, coals and thin bed formations.

Production controls on these reservoirs are not limited to hydrocarbons in place, permeability and porosity. Pay identification requires an understanding of complex lithologies and exotic mineralogies.


Only Core Lab offers the comprehensive range of unique technologies required to optimize your unconventional reservoirs.

Geological Petrophysical Geomechanical Geochemical



To learn more about our unique unconventional reservoir evaluation services contact Core Lab.
(713) 328-2121 or (361) 289-5457 psinfo@corelab.com

© 2005 Core Laboratories. All rights reserved.




Impedance & Reflectivity Attributes

Layer & Boundary

Layer	Boundary
<ul style="list-style-type: none">• Acoustic impedance• Shear impedance• Density• Lambda Rho and Mu Rho• Poisson's impedance• VP/VS• EEI Rock properties• Anisotropy	<ul style="list-style-type: none">• Amplitude<ul style="list-style-type: none">Full stackPartial angle stack(Far-Near)*Far• AVO inversion<ul style="list-style-type: none">NI_p and NI_sGradientLMRPoissonFluid factor• Anisotropy

Popular Pore-Fluid Discriminators



Outline

Seismic Attribute Analysis for GoM

<ul style="list-style-type: none">• Attribute list• Pore-fluid attributes• Boundary attribute: Fluid factor• Well-to-seismic calibration• Seismic 3D field study• Conclusions

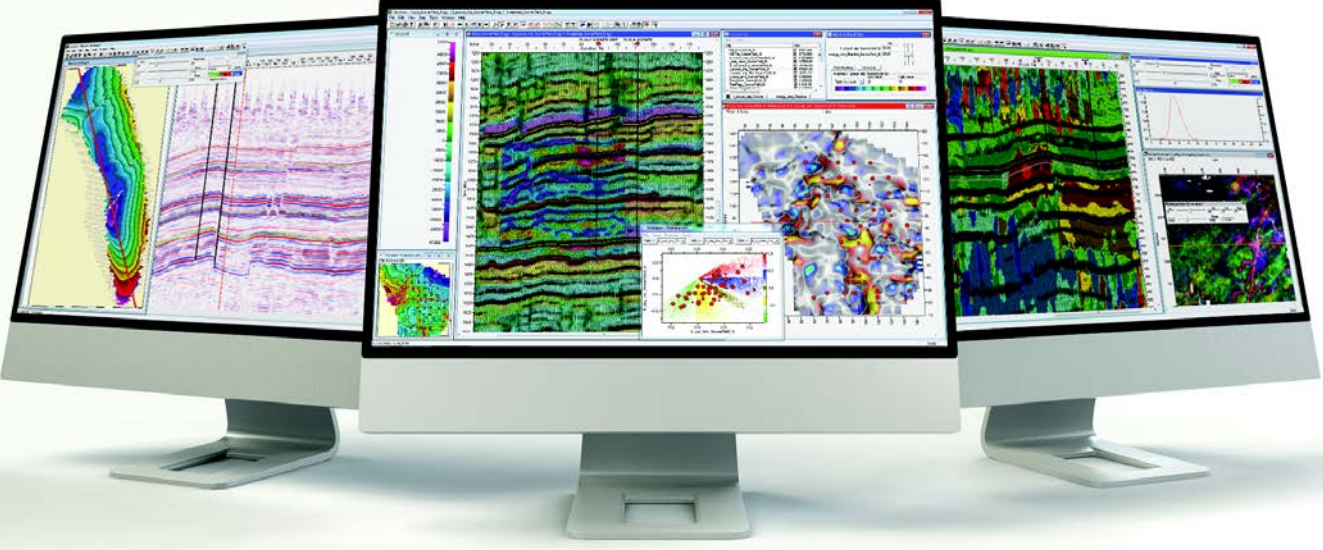
SPONSORS



**SUE MAUR
EXPLORATION &
PRODUCTION, LLC**

802 N Carancahua St
Suite 1000
Corpus Christi, TX 78401-0015
Phone: (361) 884-8824
Fax: (361) 884-9623


Exploring Texas since 1968



Seismic Attributes *Simplified*

Resolve GeoSciences delivers a complete attribute workflow with properly conditioned volumes, data dependent color palettes and realistic ranges. Every project is ready to load into your interpretation workstation and to view and analyze with SeisShow, our powerful attribute analysis software provided complimentary with our services.

Learn More at ResolveGeo.com | info@resolvegeo.com | 713-972-6200



Seismic Attributes - HQ Frequency Enhancement - Spectral Decomposition - Complimentary Viewing Software

Geokinetics

Pore-Fluid Seismic Attributes

3 Popular Discriminators

Derived from seismic

Fluid factor	$= NI_P - \gamma_1 NI_S$
Poisson impedance	$= \rho\alpha - \gamma_2 \rho\beta$
Lambda-rho	$= (\rho\alpha)^2 - \gamma_3 (\rho\beta)^2$

NI = Normal incidence
 α = P-wave velocity
 β = S-wave velocity
 ρ = Density
 γ_1 = Calibration factors derived from well-logs or seismic data.

Smith and Gidlow suggest:
 Calculate γ_1 so that
 $NI_P = \gamma_1 NI_S$ at the top of a brine sand

Geokinetics ΔF = Fluid Factor: Boundary or Layer Property?

Calibration: $NI_{WET} = \gamma NI_S$ leads to ...

$NI_{GAS} - NI_{WET} = \Delta F$

$$\Delta F \approx \frac{(AI_{GAS\ SAND} - AI_{WET\ SAND})}{(AI_{GAS\ SAND} + AI_{WET\ SAND})}$$

ΔF relates to gas/water contact $-NI_{GWC}$... not encasing shale.

SPONSORS



Since 1905

Royal Exploration Company, Inc.

Bank of America

500 N. Shoreline Blvd. Suite 807 N
Corpus Christi, Texas 78471-1008

Alan Costello - Geologist Robert Rice - Geologist
Matt Hammer - Exploration Manager

Telephone: 361-888-4792 Fax: 361-888-8190

www.**GeoSteering**.com

281-573-0500
info@geosteering.com

Free introductory consultation
with modeling:
let us demonstrate whether
images or propagation resistivity
could add value to your well.

Personnel with degrees & 20+ years of oilfield experience

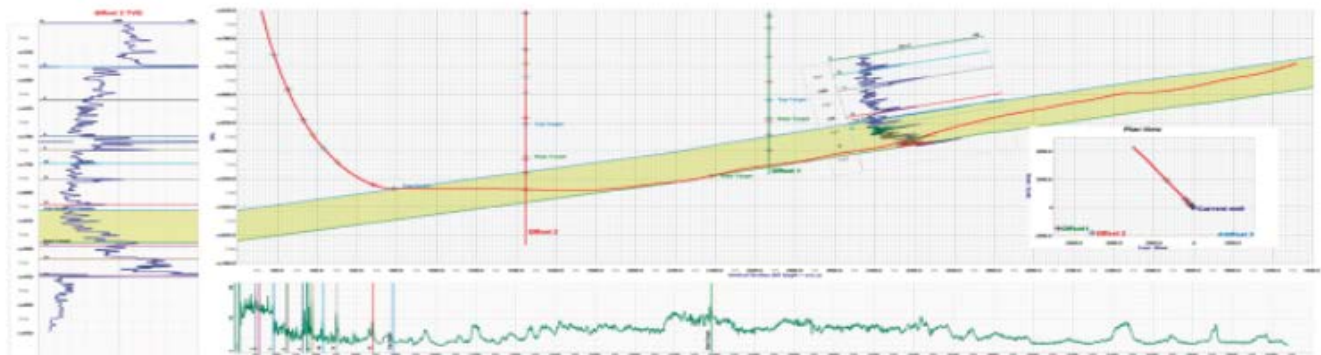
Proprietary software


TST interpretation for GR only jobs

**Image displays / interpretation for jobs with azimuthal GR,
resistivity or density**

**Resistivity modelling / interpretation for jobs with LWD
propagation resistivity**

Real-time (always)



 **AI Relationship of Pore-Fluid Attributes**


Shale	Shale
Wet Sand AI_{WET}	Gas Sand AI_{GAS}

$AI_{DIFF} = AI_{GAS} - AI_{WET}$
 $AI_{SUM} = AI_{GAS} + AI_{WET}$

← Sensitivity term
← Damping term

Fluid Factor = $AI_{DIFF} \times (AI_{SUM})^{-1}$
Poisson Impedance = $AI_{DIFF} \times (AI_{SUM})^0$
Lambda-Rho = $AI_{DIFF} \times (AI_{SUM})^{+1}$

Sensitivity of 3 pore-fluid attributes are related to $(AI_{GAS} - AI_{WET})$ of sand reservoir

 **Outline**

Seismic Attribute Analysis for GoM

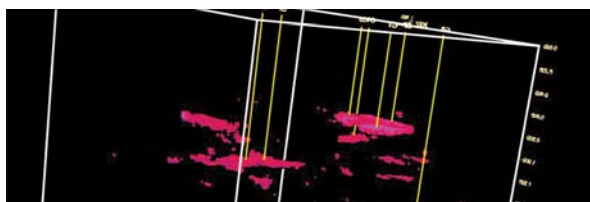
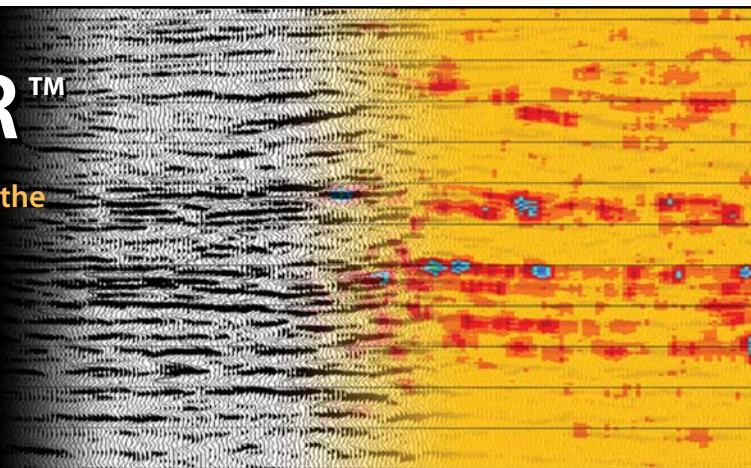
- Attribute list
- Pore-fluid attributes
- **Boundary attribute: Fluid factor**
- Well-to-seismic calibration
- Seismic 3D field study
- Conclusions

Continued on page 40

DRILL SMARTER™

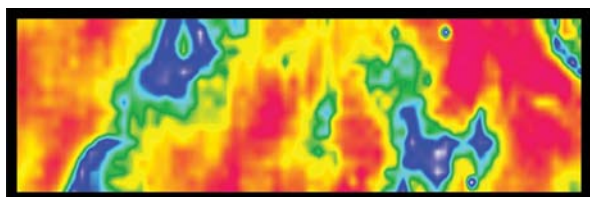
Proprietary Post-Stack Technologies to Aid in the Analysis of Seismic Data and Identification of Direct Hydrocarbon Indicators

Reduce risk • Increase exploration success
Stay ahead of the competition • Improve your ROI



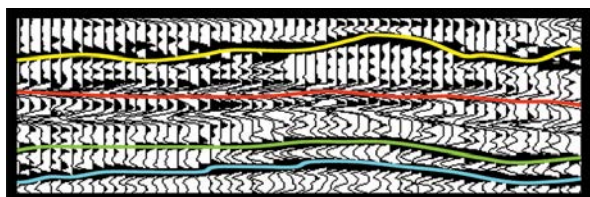
EnergyAbsorptionSM

Measures high frequency absorption indicating the location of increased porosity and potential gas accumulations



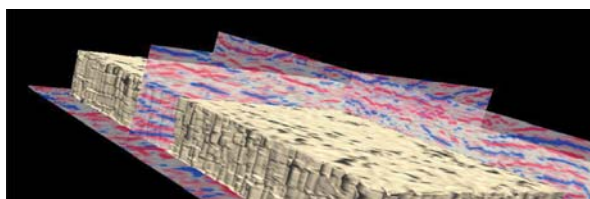
SpecViewSM

Spectral Decomposition identifying hidden stratigraphic information and subtle anomalies within a specific horizon



HiResSM

Recovers detail lost in the standard seismic response



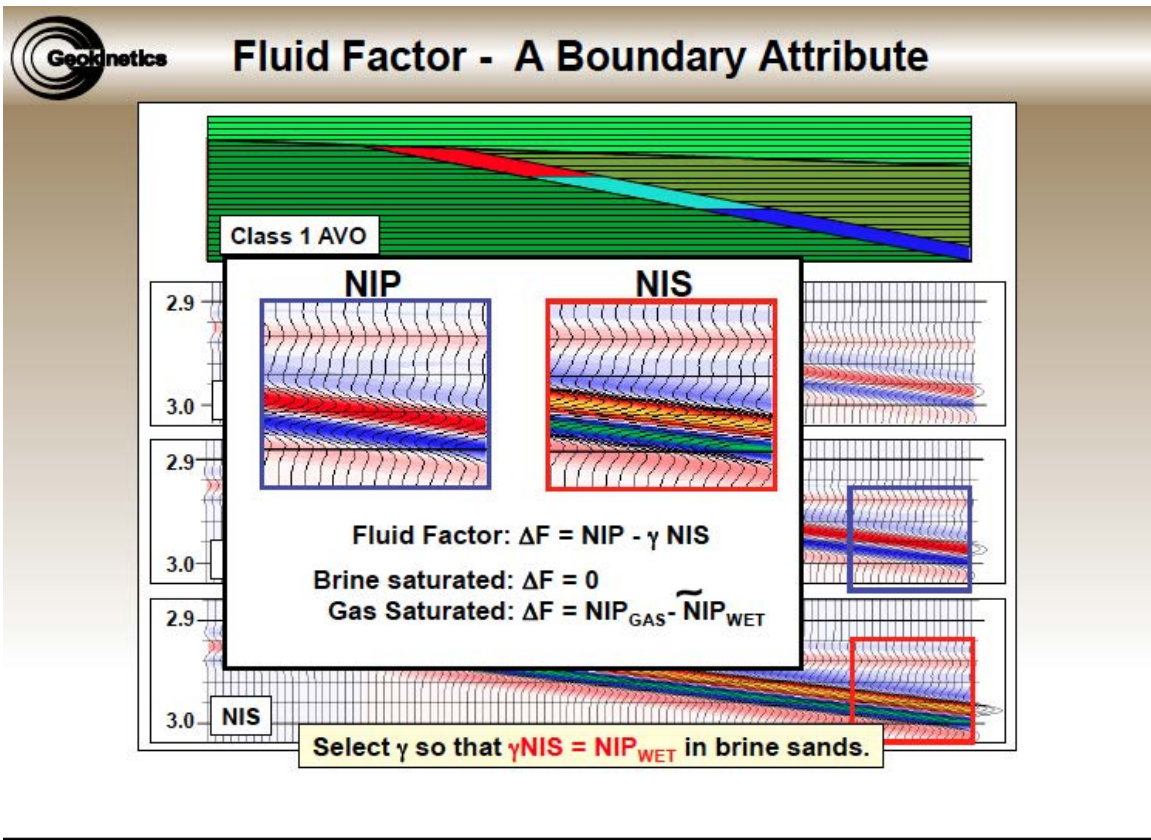
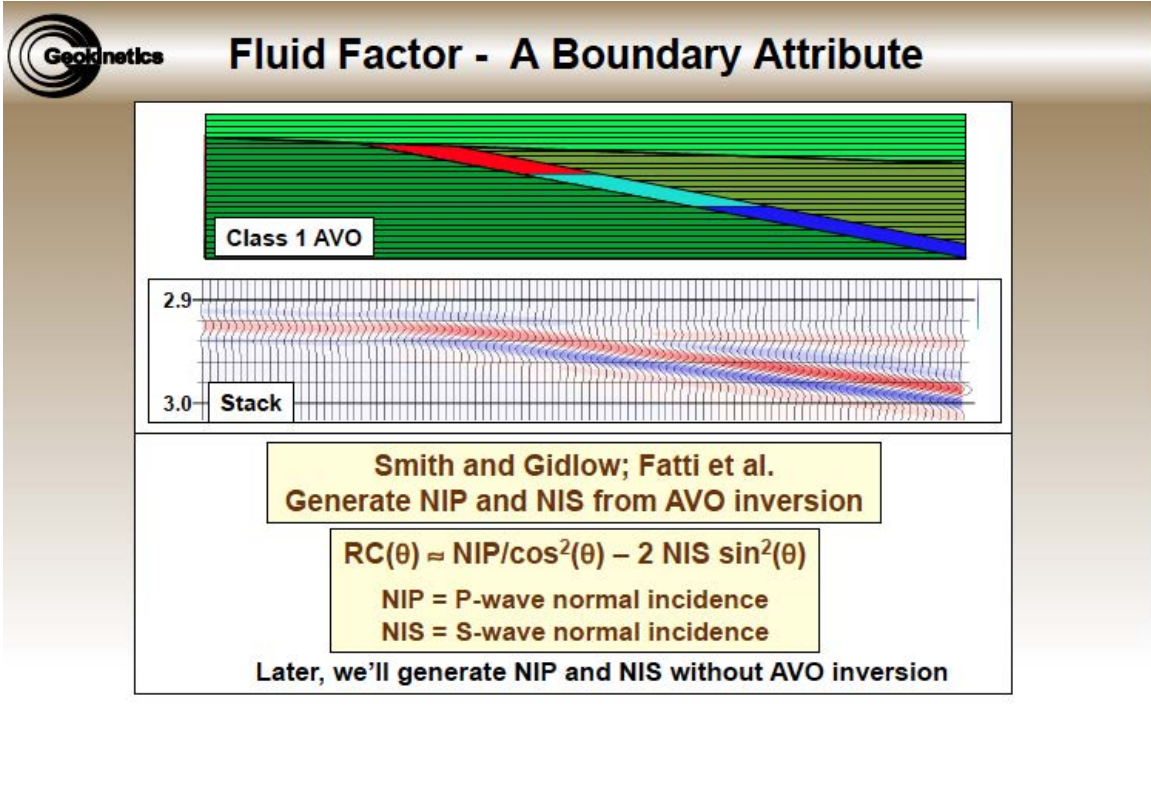
SemCubeSM

Measures a semblance response indicating faulting, fracturing and other anomalous areas

SeismicVentures[®]

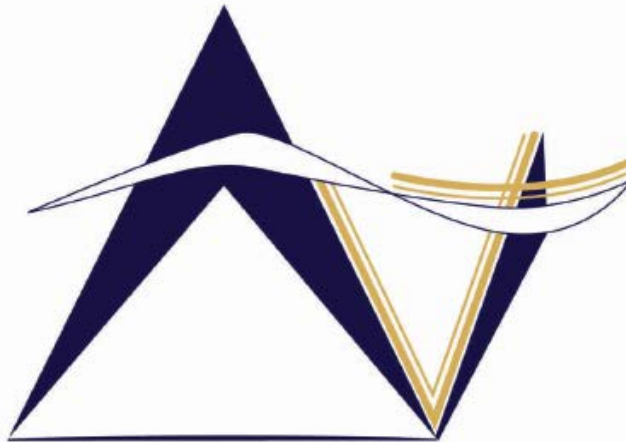
For more information, contact Sara Davis at s_davis@seismicventures.com or (281) 240-1234 x206

Seismic Ventures, Inc. • 12603 Southwest Freeway, Suite 600 • Stafford, Texas 77477
t: 281-240-1234 • f: 281-240-4997 • www.seismicventures.com



Continued on page 42

SPONSORS



VirTex Operating Company, Inc.

*615 North Upper Broadway, Suite 525, Corpus Christi, Texas 78477
(361) 882-3046*

SEI®

Seismic Exchange, Inc.

Strategic Speculative Surveys
Geophysical Data Marketing & Management

YOUR
Full Service
National
Seismic Data
Marketing Firm

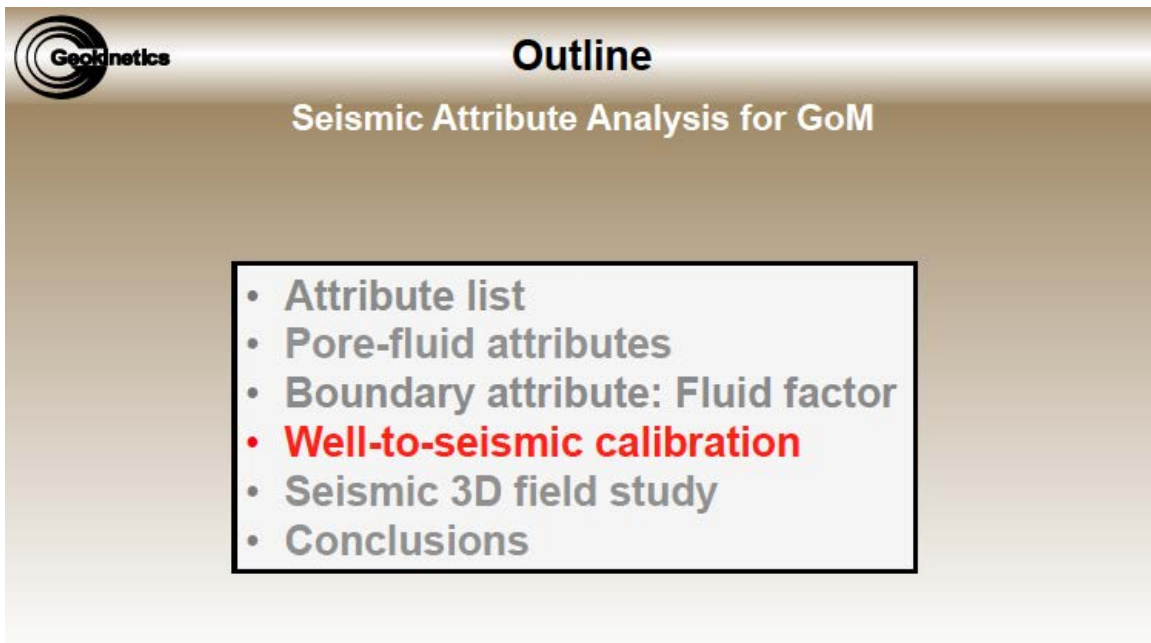
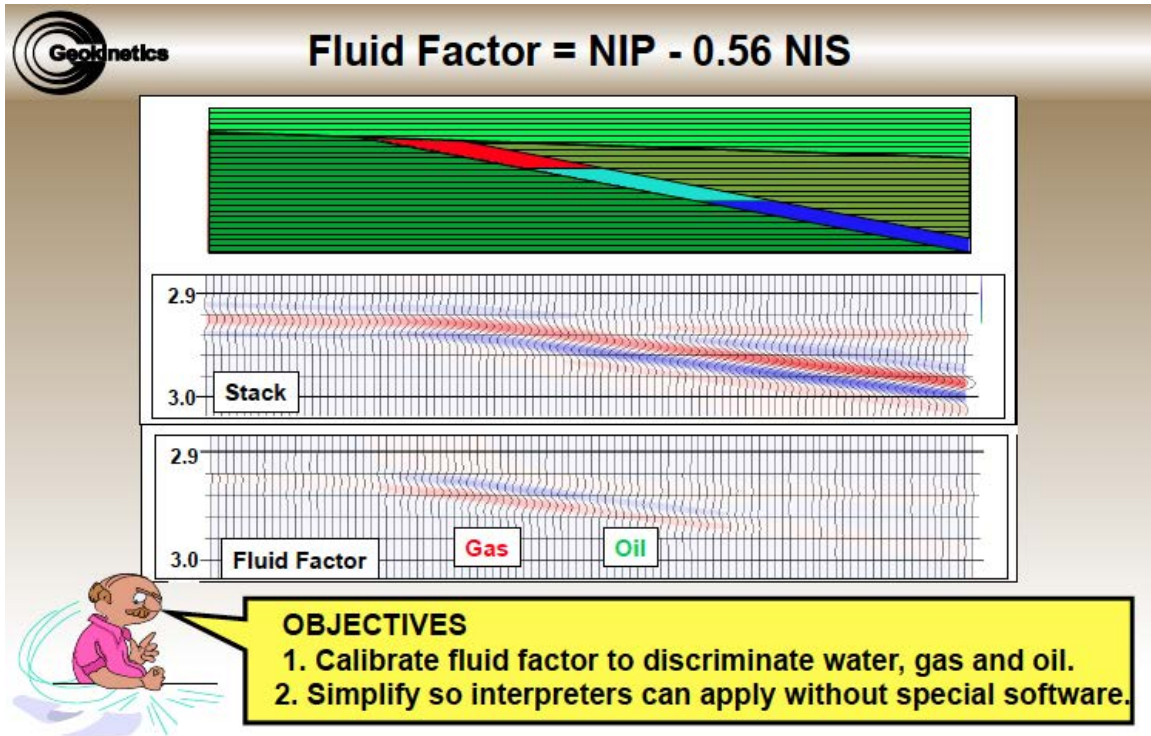
Corpus Marketing Contact:
Beau Patrick

Corpus Office
361.884.2936

CORPUS CHRISTI DALLAS DENVER HOUSTON NEW ORLEANS TULSA

11050 Capital Park Dr., Houston, Texas 77041 832.590.5100

www.seismicexchange.com



Continued on page 44

SPONSORS

STALKER ENERGY, L.P.

Austin Office:

1717 W. 6th Street, Ste 230
Austin, Texas 78703
512.457.8711

Contact: Bill Walker, Jr.
bwalker@stalkerenergy.com

Houston Office:

2001 Kirby Drive, Suite 950
Houston, Texas 77019
713.522.2733

Contact: Todd Sinex
tsinex@stalkerenergy.com

www.stalkerenergy.com



LMP PETROLEUM, INC.

EXPLORING SOUTH TEXAS

615 N. Upper Broadway
Suite 1770
Wells Fargo Bank Building
Corpus Christi, Texas 78401-0773

361-883-0923
Fax: 361-883-7102
E-mail: geology@lmpexploration.com

WELLSITE GEOSCIENCE SERVICES



**When time is money,
Wellsite Geoscience is
money well spent.**

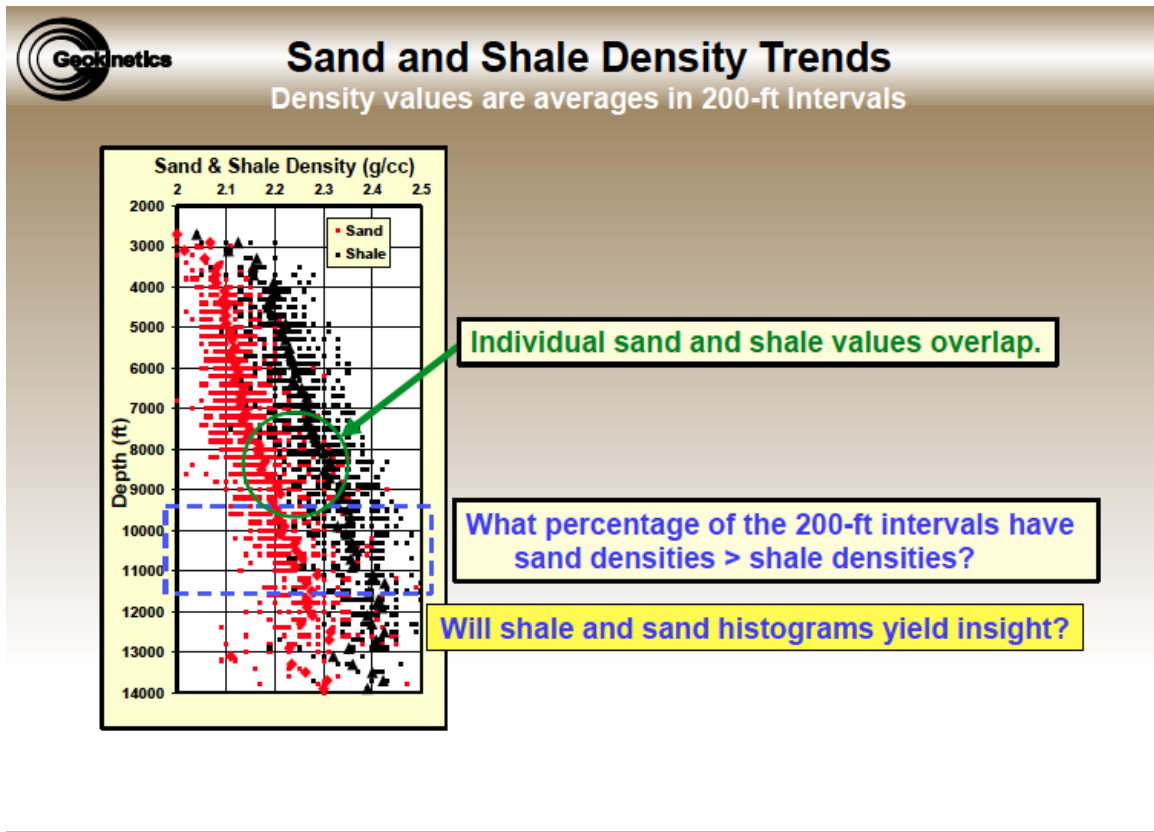
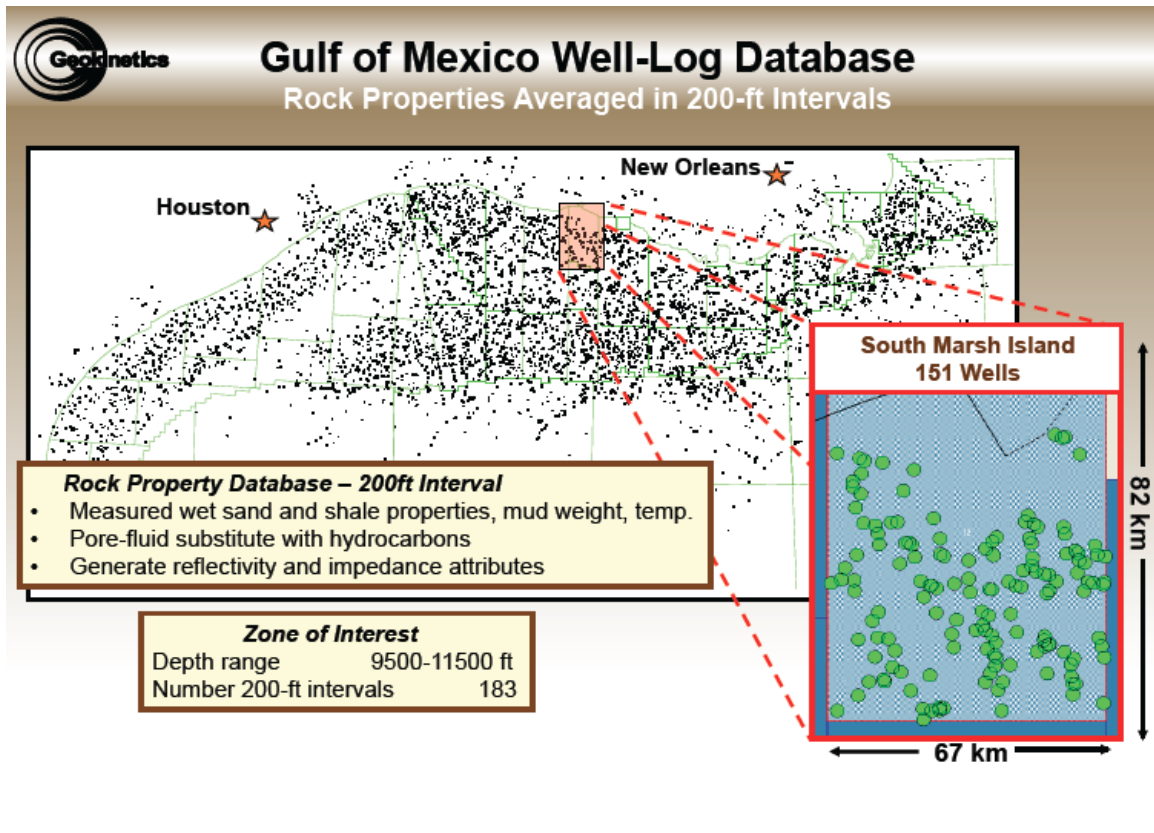
Whether you're exploring a basin, producing a well or completing a shale play, time is money. That's why Weatherford Laboratories brings a suite of formation evaluation technologies right to the wellsite. Utilizing mud gas and cuttings, these technologies provide detailed data on gas composition, organic richness, mineralogy and chemostratigraphy in near real time. As a result, operators now have an invaluable tool to assist with sweet spot identification, wellbore positioning, completion design and hydraulic fracturing. We call it Science At the WellSite. You'll call it money well spent.

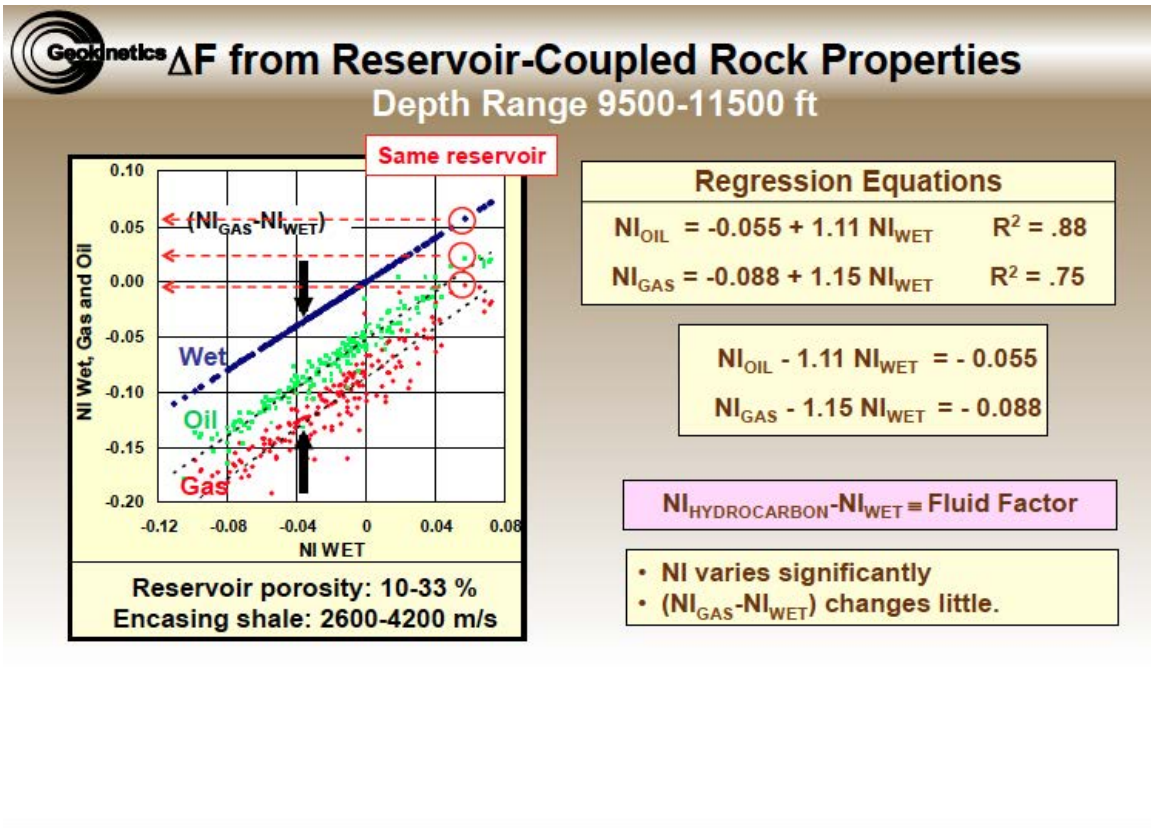
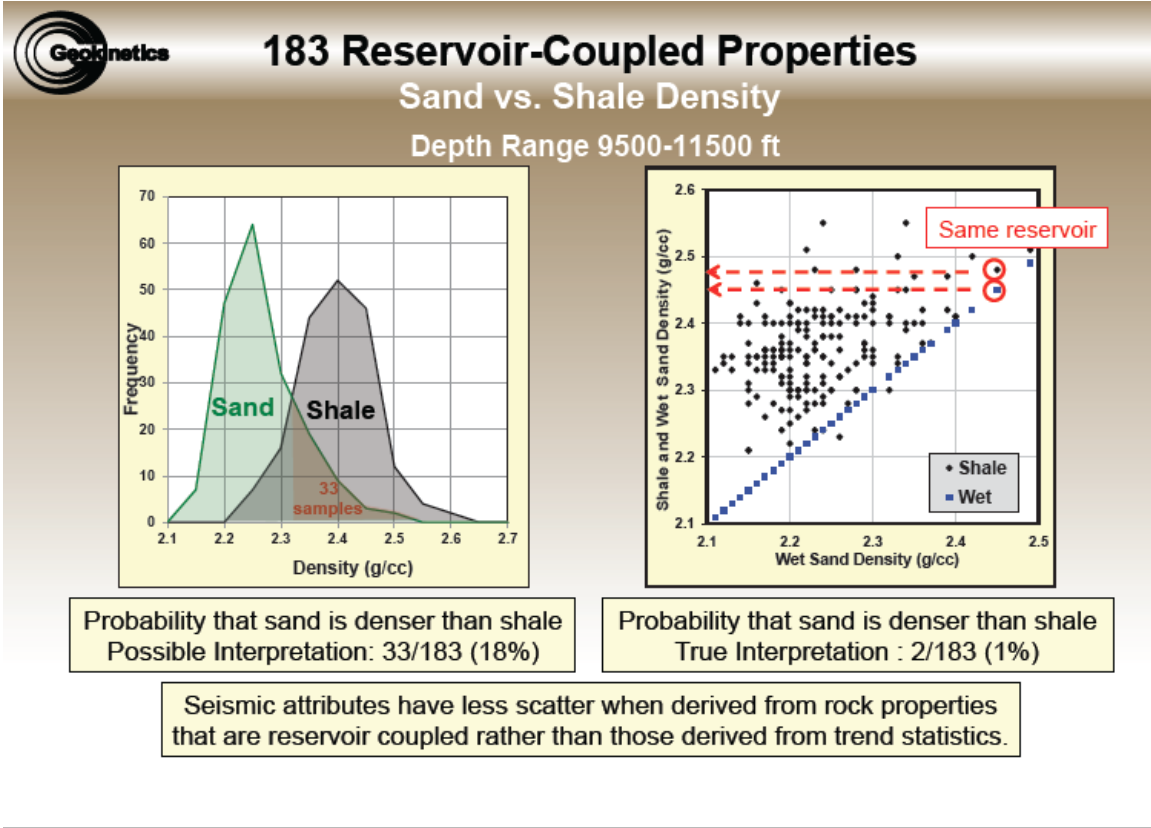
SCIENCE AT THE WELLSITE™
www.weatherfordlabs.com

Formation Evaluation | Well Construction | Completion | Production

©2013 Weatherford. All rights reserved.









Fluid Factor vs. NI

Normal-Incident Reflectivity

$$NI = f(VP_1, VP_2, Rho_1, Rho_2)$$

Fluid Factor

Wet	$\Delta F \approx 0$	} SMI Properties Depth: 9500 – 11500 ft
Oil, Fizz.....	$\Delta F \approx -.055$	
Gas	$\Delta F \approx -.088$	

Fluid Factor

- Independent of reservoir porosity
- Independent of shale properties



Fluid Factor Projection

$$\Delta F \equiv NIP(t) - \gamma NIS(t)$$

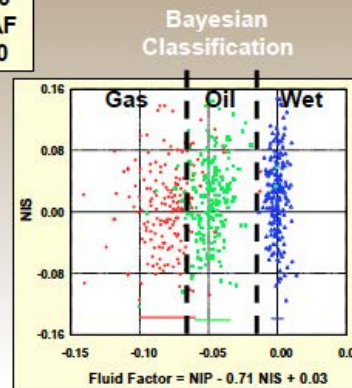
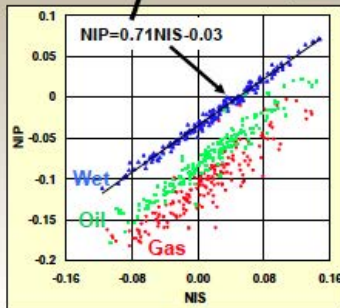
Brine saturated $\Delta F \Rightarrow 0$

Gas saturated $\Delta F \Rightarrow NIP(t)_{GAS} - NIP(t)_{BRINE}$

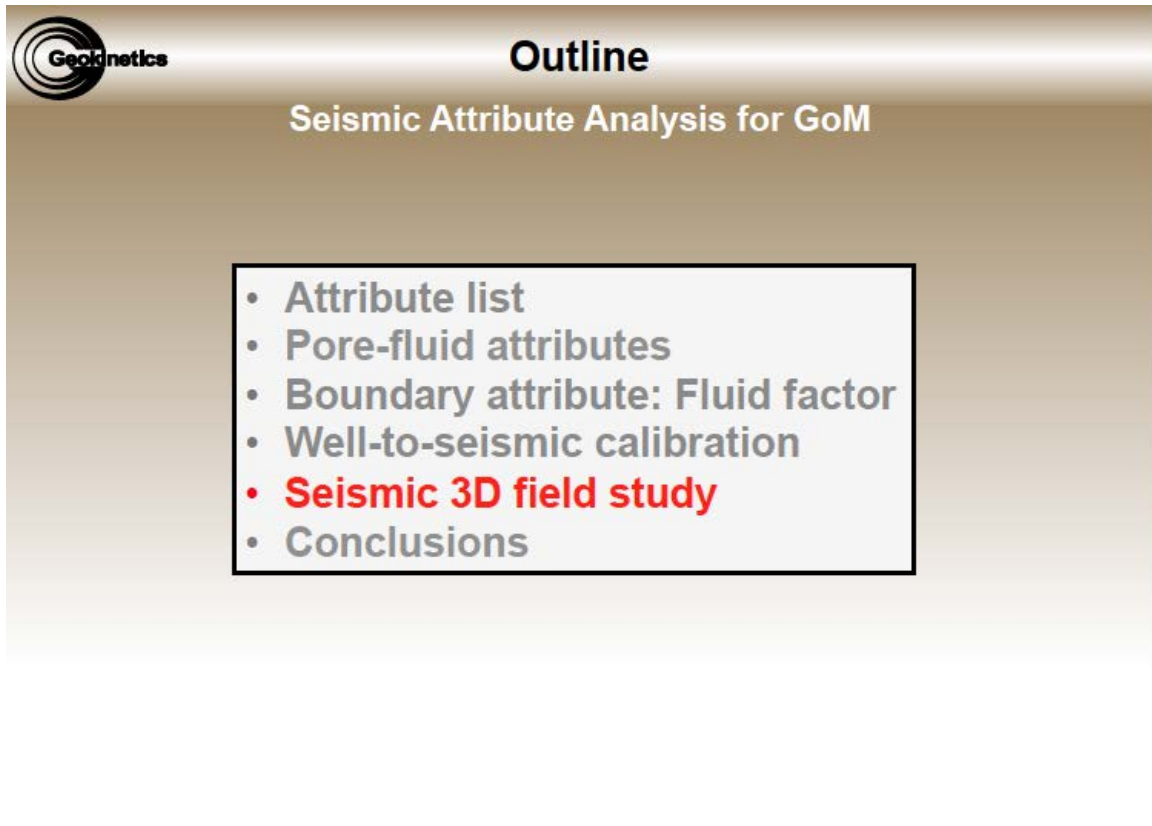
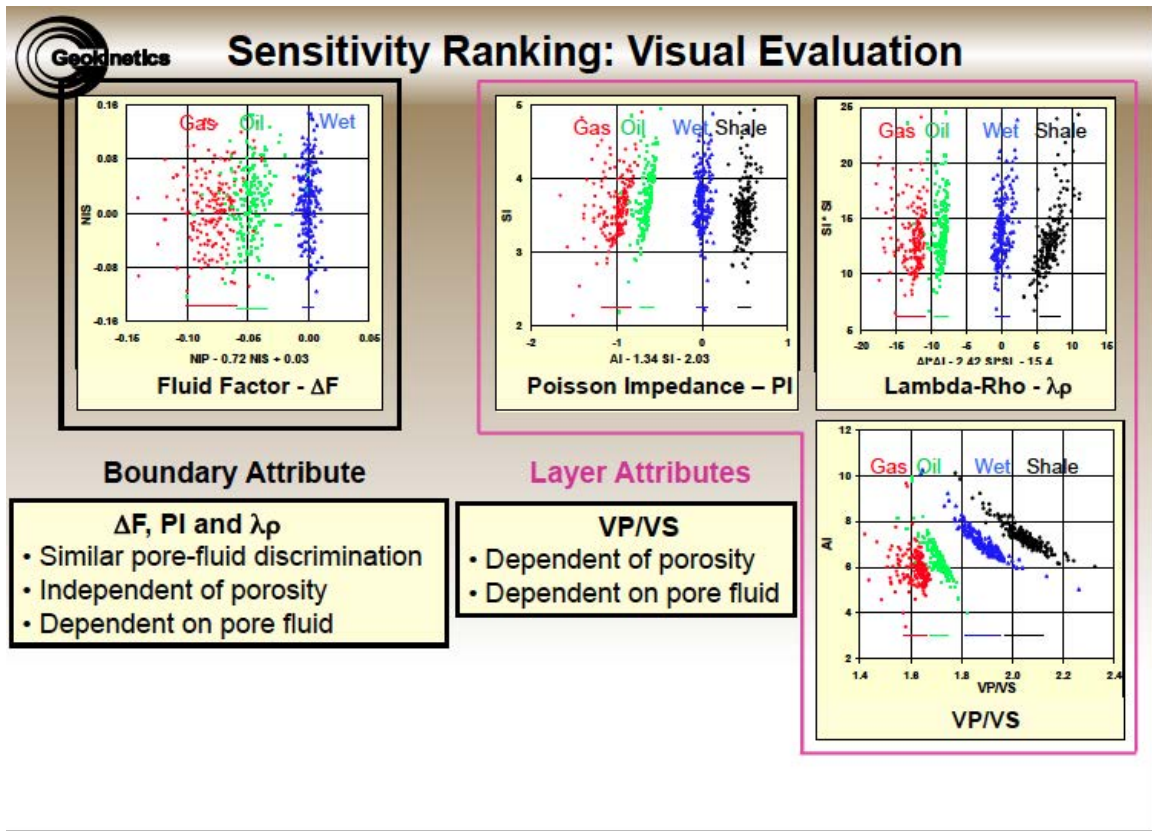
$$NIP - 0.71 NIS + 0.03 = 0$$

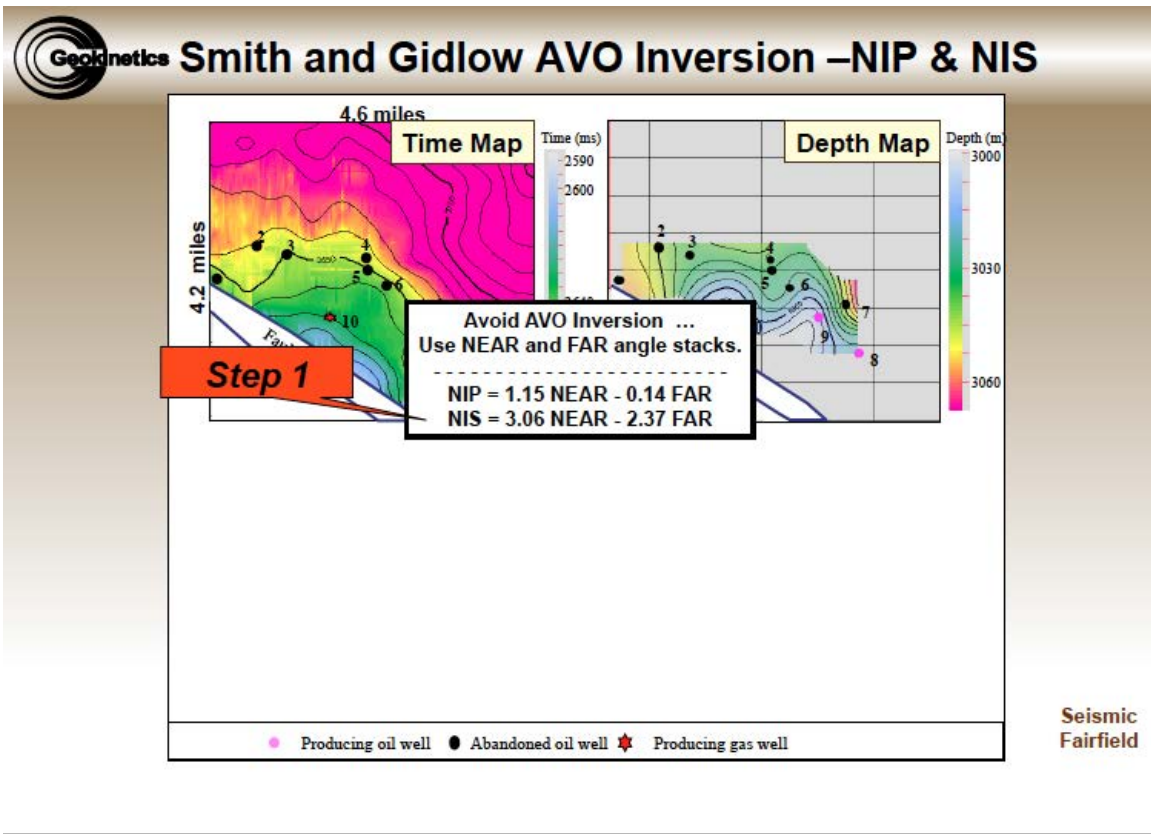
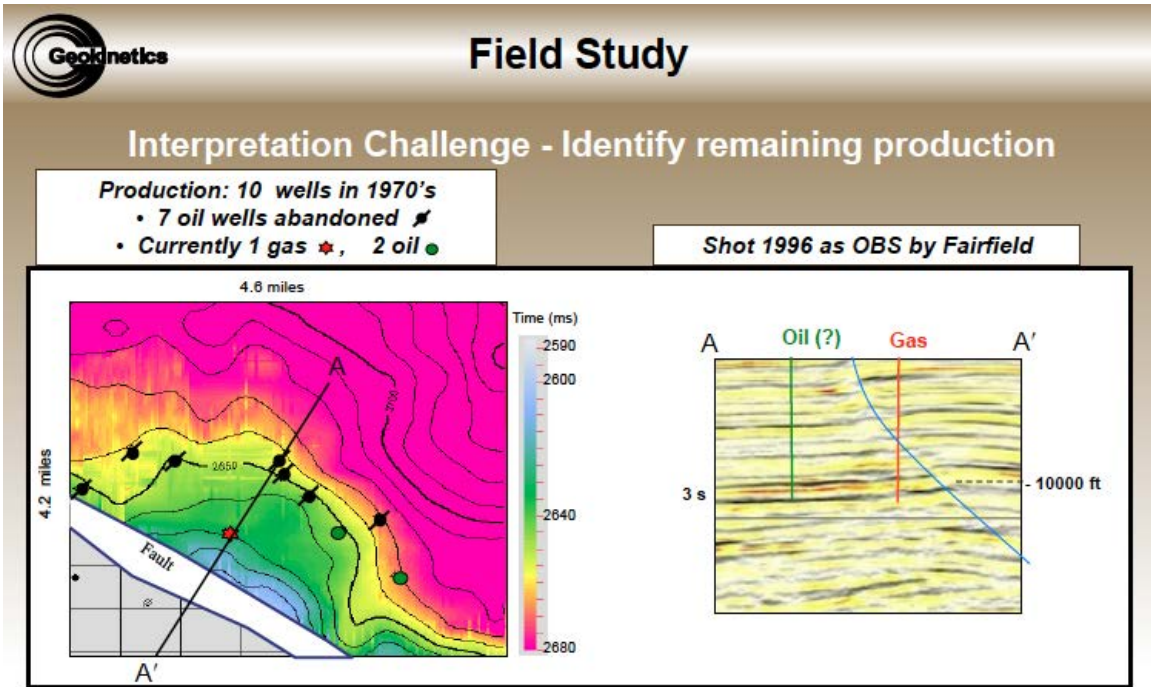
$$NIP - 0.71 NIS + 0.03 = \Delta F$$

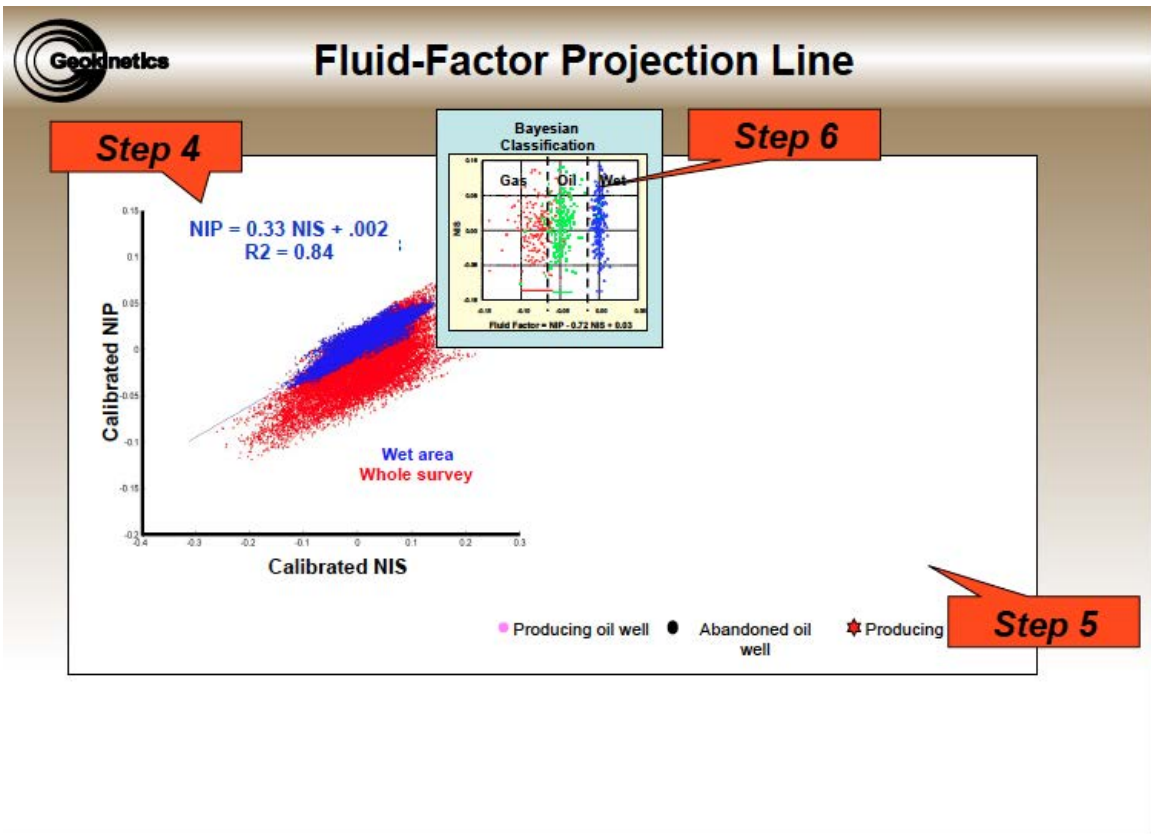
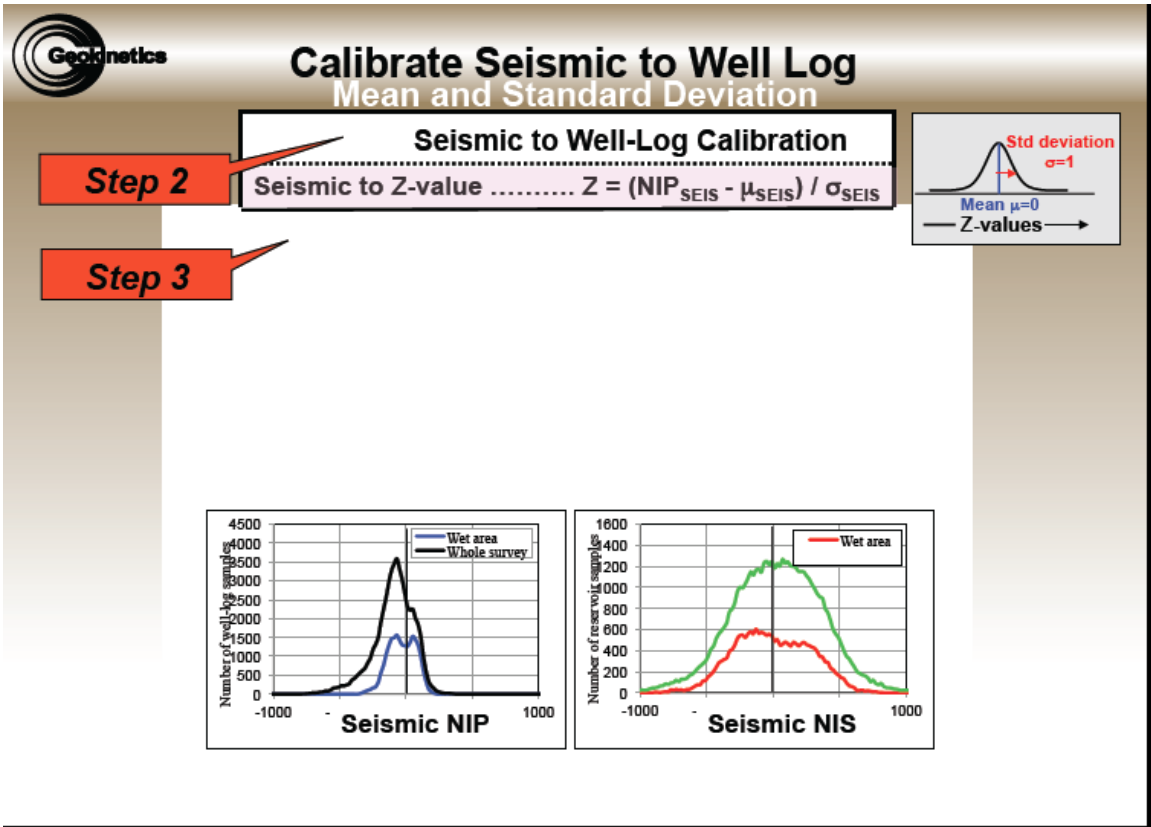
Insures $E\{\Delta F_{WET}\} = 0$

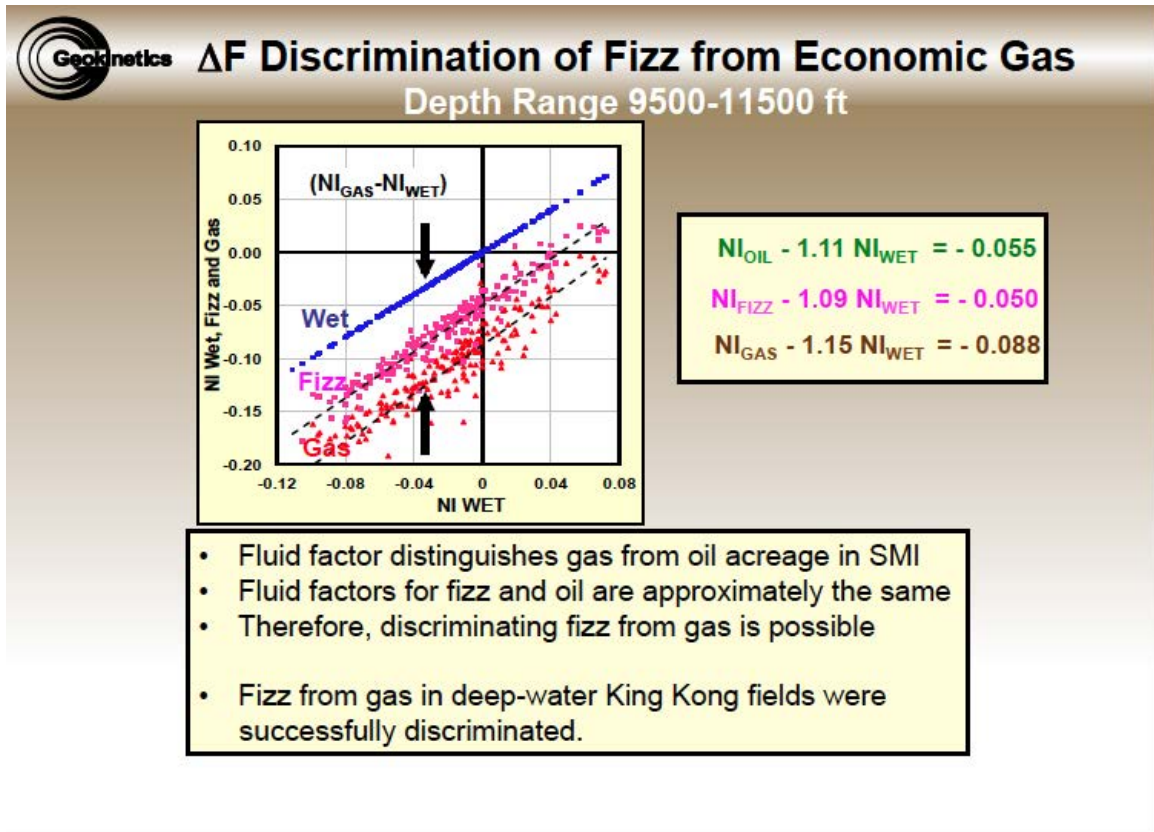
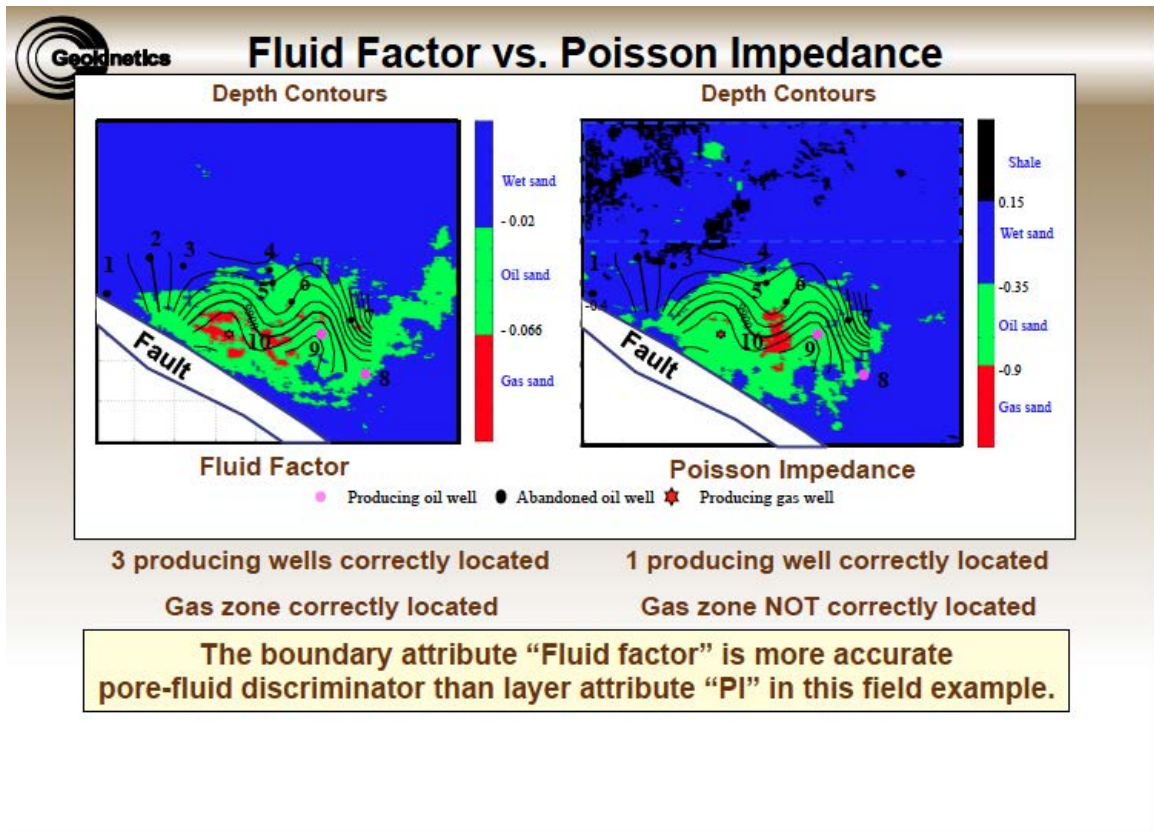


Compare fluid-factor sensitivity to layer attributes











Outline

Seismic Attribute Analysis for GoM

- Attribute list
- Pore-fluid attributes
- Boundary attribute: Fluid factor
- Well-to-seismic calibration
- Seismic 3D field study
- **Conclusions**



Summary of Calibration Properties

- ΔF , PI and $\lambda\rho$ relate to reservoir's AI
- Seismic calibration with reservoir-coupled rock properties sharpens the discrimination between brine & hydrocarbon fluids.

Continued on page 52



Summary of Fluid-Factor Properties

- Independent of shale properties.
- Independent of reservoir porosity.
- Independent of wavelet shape.
- ΔF quantifies pore-fluid type.



Field Study Conclusions

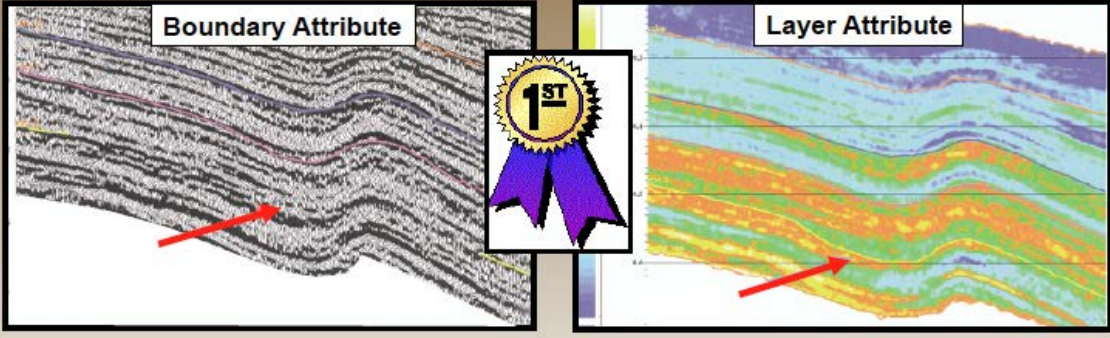
Fluid Factor

- Predicted oil and gas zones
- Measured from near and far angle stacks
No inversion to impedances
No AVO inversion to NIP & NIS
- Seismically calibrated to regional trend
... independent of field wells
- Valid for regional exploration

Answer to initial question ...
Reflectivity attributes can be quantified and normally require less time and expense to generate.

Continued on page 53

Geokinetics **Boundary vs. Layer Attributes**



Boundary Attribute

Layer Attribute

1ST

Calibrated boundary attributes yield “Quick Look” interpretations.

Latimer, 2000 TLE

Geokinetics

... a little bit more ...

**Validating interpretation success
of seismic attributes**

Continued on page 54



Important DHI Validations for Risk

Rose and Associates' DHI Consortium

DHI Characteristics

A. Amplitude and downdip structural conformance

- B. Phase or character change at downdip anomaly edge
- C. Amplitude consistency in mapped anomaly
 - D. Flat spots
- E. AVO response anomalous to events above and below
- F. AVO observations in gathers or offset stacks
- G. AVO event anomalous to events outside the closure

H. AVO brine/hydrocarbon synthetics compared to field data

Top DHI Validations

Class 3: **A** (Full angle stack)

Class 2: **A** (Far angle stack)

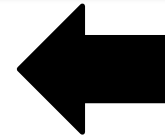
H (AVO modeling \Rightarrow Quantification)

Roden et al., 2014, AAPG & SEG Interpretation Journal

SUPPORT YOUR SOCIETY

Advertise !!!

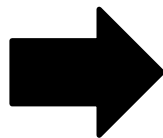
with the CCGS - CBGS



****NOW OFFERING****
WEBSITE ADS @
WWW.CCGEO.ORG

BANNER AD \$2500/YR
SIDE PAGE AD \$1500/YR

**MONTHLY
 BULLETIN
 ADS**



1.65" x 2.4" \$75	1.65" x 4.8" \$150
1/8 page 2.2" x 3.6" \$250	CCGS - CBGS Bulletin Ad Space Available: Annual Rates (9 issues + directory)
1/4 page 3.6" x 4.3" \$375	1/2 page 7.2" x 4.3" \$500
1/4 page 3.6" x 4.3" \$375	Full page 7.2" x 8.6" \$850
1/4 page 3.6" x 4.3" \$375	Inside Front or Back Cover \$1000

FOR MORE DETAILS:

EMAIL ADS@CCGEO.ORG OR CALL (361) 887-2691

GEO LINK POST

<http://www.lib.utexas.edu/books/landsapes/index.php> Free service. Rare, fragile, hard-to-find, public domain documents covering various topics about the landscape of Texas. Includes the Texas Geological Survey from 1887 until 1894.

USGS TAPESTRY OF TIME AND TERRAIN <http://tapestry.usgs.gov> The CCGS is donating to all of the 5th and 6th grade schools in the Coastal Bend. Check it out--it is a spectacular map. You might want to frame one for your own office. The one in my office has glass and a metal frame, and It cost \$400 and it does not look as good as the ones we are giving to the schools.

FREE TEXAS TOPOS'S <http://www.tnris.state.tx.us/digital.htm> these are TIFF files from your state government that can be downloaded and printed. You can ad them to SMT by converting them first in Globalmapper. Other digital data as well.

FREE NATIONAL TOPO'S [http://store.usgs.gov/b2c_usgs/b2c/start/\(xcm=r3standardpitrex_prd\)/do](http://store.usgs.gov/b2c_usgs/b2c/start/(xcm=r3standardpitrex_prd)/do) go to this webpage and look on the extreme right side to the box titled TOPO MAPS DOWNLOAD TOPO MAPS FREE.

<http://www.geographynetwork.com/> Go here and try their top 5 map services. My favorite is 'USGS Elevation Date.' Zoom in on your favorite places and see great shaded relief images. One of my favorites is the Great Sand Dunes National Park in south central Colorado. Nice Dunes.

<http://antwrp.gsfc.nasa.gov/apod/asropix.html> Astronomy picture of the day--awesome. I click this page everyday.

<http://www.spacimaging.com/gallery/ioweek/iow.htm> Amazing satellite images. Check out the gallery.

<http://www.ngdc.noaa.gov/seg/topo/globegal.shtml> More great maps to share with kids and students.

www.ccgeo.org Don't forget we have our own we page.

<http://terra.nasa.gov/gallery/> Great satellite images of Earth.

www.ermaper.com They have a great free downloadable viewer for TIFF and other graphic files called ER Viewer.

<http://terrasrver.com> Go here to download free aerial photo images that can be plotted under your digital land and well data. Images down to 1 meter resolution, searchable by Lat Long coordinate. Useful for resolving well location questions.

TYPE LOGS OF SOUTH TEXAS FIELDS by Corpus Christi Geological Society

NEW (2009-2010)TYPE LOGS IN RED; ***2011;**

lost now found

ARANSAS COUNTY

Aransas Pass/McCampbell Deep
Bartell Pass
Blackjack
Burgentine Lake
Copano Bay, South
Estes Cove
Fulton Beach
Goose Island
Half Moon Reef
Nine Mile Point
Rockport, West
St. Charles
Tally Island
Tract 831-G.O.M. (offshore)
Virginia

BEE COUNTY

Caesar
Mosca
Nomanna
Orangedale(2)
Ray-Wilcox
San Domingo
Tulsita Wilcox

BROOKS COUNTY

Ann Mag
Boedecker
Cage Ranch
Encintas
ERF
Gyp Hill
Gyp Hill West
Loma Blanca
Mariposa
Mills Bennett
Pita
Tio Ayola
Tres Encinos

CALHOUN COUNTY

Appling
Coloma Creek, North
Heyser
Lavaca Bay
Long Mott
Magnolia Beach
Mosquito Point
Olivia
Panther Reef
Powderhorn
Seadrift, N.W.
Steamboat Pass
Webb Point
S.E. Zoller

CAMERON COUNTY

Holly Beach
Luttes
San Martin (2)
Three Islands, East

Vista Del Mar

COLORADO COUNTY

E. Ramsey
Graceland N. Fault Bik
Graceland S. Fault Bik

DEWITT COUNTY

Anna Barre
Cook
*******Nordheim**
Smith Creek
Warmley
Yorktown, South

DUVAL COUNTY

DCR-49
Four Seasons
Good Friday
Hagist Ranch
Herbst
Loma Novia
Petrox
Seven Sisters
Seventy Six, South
Starr Bright, West

GOLIAD COUNTY

Berclair
North Blanca
Bombs
Boyce
Cabeza Creek, South
Goliad, West
St Armo

HIDALGO COUNTY

Alamo/Donna
Donna
Edinburg, West
Flores-Jeffress
Foy
Hidalgo

LA BLANCA

LA Blanca
McAllen & Pharr
McAllen Ranch
Mercedes
Monte Christo, North
Penitas
San Fordyce
San Carlos
San Salvador
S. Santallana
Shary
Tabasco
Weslaco, North
Weslaco, South

JACKSON COUNTY

Carancahua Creek
Francitas
Ganado & Ganado Deep
LaWard, North
Little Kentucky

Maurbro

StewartSwan Lake

Swan Lake, East
Texana, North
West Ranch

JIM HOGG COUNTY

Chaparosa
Thompsonville,N.E.
JIM WELLS COUNTY

Freebom

Hoelsher
Palito Blanco
Wade City

KARNES COUNTY

Burnell
Coy City
Person
Runge

KENEDY COUNTY

Candelaria
Julian
Julian, North
Laguna Madre
Rita
Stillman

KLEBERG COUNTY

Alazan
Alazan, North
Big Caesar
Borregos
Chevron (offshore)
Laguna Larga
Seeligson
Sprint (offshore)

LA SALLE COUNTY

*****Pearsall**

LAVACA COUNTY

Hallettsville
Hope
Southwest Speaks
Southwest Speaks Deep
LIVE OAK COUNTY

Atkinson

Braslau
Chapa
Clayton
Dunn
Harris

Houdman
Kittie West-Salt Creek
Lucille
Sierra Vista
Tom Lyne

White Creek
White Creek, East

MATAGORDA COUNTY

Collegeport

MCMULLEN COUNTY

Arnold-Weldon

Brazil
Devil's Waterhole
Hostetter
Hostetter, North

NUECES COUNTY

Agua Dulce (3)
Arnold-David
Arnold-David, North
Baldwin Deep
Calallen
Chapman Ranch
Corpus Christi, N.W.
Corpus Christi West C.C.
Encinal Channel
Flour Bluff/Flour Bluff, East
GOM St 9045(offshore)
Indian Point
Mustang Island
Mustang Island, West
Mustang Island St.
889S(offshore)
Nueces Bay/Nueces Bay
West

Perro Rojo

Pita Island
Ramada
Redfish Bay
Riverside
Riverside, South
Saxet
Shield
Stedman Island

Turkey Creek

REFUGIO COUNTY

Bonnieview/Packery Flats
Greta
La Rosa
Lake Pasture
Refugio, New
Tom O'Connor
SAN PATRICIO COUNTY
Angelita East

Commonwealth
Encino
Enos Cooper
Geronimo
Harvey

Hiberia
Hodges
Mathis, East
McC Campbell Deep/Aransas Pass
Midway
Midway, North
Odem

Plymouth

Portilla (2)
Taft
Taft, East

STARR COUNTY

El Tanque
Garcia
Hinde
La Reforma, S.W.

Lyda

Ricaby
Rincon
Rincon, North
Ross
San Roman
Sun
Yturria

VICTORIA COUNTY

Helen Gohike, S.W.
Keeran, North
Marcado Creek
McFaddin
Meyersville
Placedo

WEBB COUNTY

Aquilares/Glen Martin
Big Cowboy
Bruni, S.E.
Cabezon
Carr Lobo
Davis
Hirsch
Juanita
Las Tiendas
Nicholson
O'Hem
Olmitos
Tom Walsh

WHARTON COUNTY

Black Owl

WILLACY COUNTY

Chile Vieja
La Sal Vieja
Paso Real
Tenerias

Willamar

ZAPATA COUNTY

Benavides
Davis, South
Jennings/Jennings, West
Lopeno
M&F
Pok-A-Dot

ZAVALA COUNTY

El Bano

Call Coastal Bend Geological Library, Maxine: 361-883-2736
1 log -- \$10 each, 5-10 logs \$9 each and 10 + logs \$8.00 each – plus postage

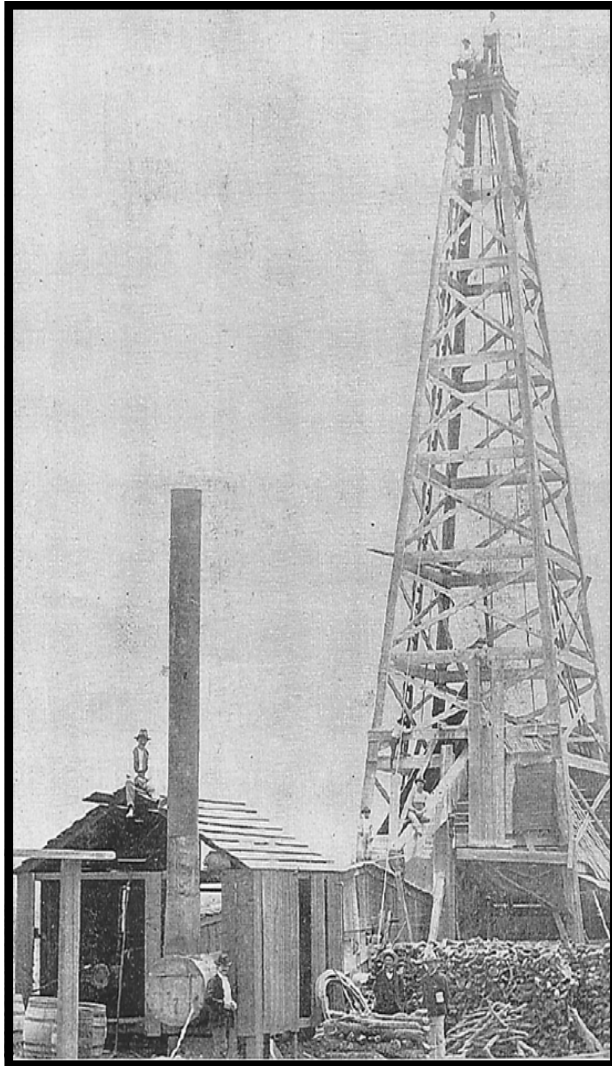
OIL MEN

TALES FROM THE SOUTH TEXAS OIL PATCH
DVD

MEMBER PRICE \$25
NONMEMBER \$30



To Order DVD
Sebastian Wiedmann
swiedmann@braytoncc.com
If mailed add \$5



Corpus Christi Geological Society
C/O Javelina Press
P. O. Box 60181
Corpus Christi, TX 78466

Order Form

Mail order form for Wooden rigs-Iron Men. The price is \$75 per copy, which includes sales tax, handling, and postage

Name _____

Address _____

City, State, Zip _____

No. of books _____ Amount enclosed _____

Send to Corpus Christi Geological Society Book Orders

P. O. Box 60181

Corpus Christi, TX. 78466 Tax exempt# if applicable _____

Wooden Rigs—Iron Men

The Story of Oil & Gas in South
Texas

By Bill & Marjorie K. Walraven

Published by the
Corpus Christi Geological Society

David Becker
exploration geologist

david becker
geologist

o: (361) 884-3613
f: (888) 869-2011


600 leopard st. ste 706
corpus christi, tx 78473

dkbecker1137@sbcglobal.net

 **Bief Seis, Inc.**
Geophysical Consulting

David Biersner, President
19446 Arrowood Place
Garden Ridge, Tx 78266
Cell: 281.744.7457
E-Mail: bierseis@yahoo.com

Field Quality Control
Program Management
Permit Management
Seismic Line Clearing
Supervision

 **Dawn S. Bissell**
Geoscientist

Advent Geoscience Consulting, LLC

Phone: 361-960-2151
Fax: 961-854-2604
Email: bissells@swbell.net

253 Circle Drive
Corpus Christi, TX 78411
Home: 361-854-2635

 Elizabeth Chapman
Business development/marketing

11777 Katy Freeway, Ste 570 Houston, TX 77079
office: 281.977.7432 ext 109 fax: 281.829.1788
cell: 713.817.4232 email: elizabeth@flamingoseismic.com


www.flamingoseismic.com

James L. Claughton
CONSULTING GEOLOGIST

Office | 361-887-2991
Fax | 361-883-4790
Cell | 361-960-2014
clausoie@sbcglobal.net

615 North Upper Broadway
Suite 1935
Corpus Christi, Texas
78401-0779

TEXAS LONE STAR
PETROLEUM CORPORATION



JEFF COBBS
President - Geologist


615 Leopard St., Suite 336
Corpus Christi, Texas 78401-0610
jc@tlspc.com

Office (361) 883-2911
Cell (361) 960-0530

Jim Collins
Geoscientist



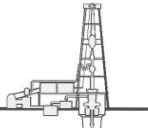
361.537.4034
jim@gulfcoastgas.com

 **SV Energy Company, LLC**
Conventional Thinking. Unconventional Results.

Frank G. Cornish
Consulting Geologist
615 N. Upper Broadway, Suite 1770
Corpus Christi, TX 78401
frank.cornish@gmail.com

361-883-0923 (o)
1-800-510-5810 (f)
361-563-9184 (m)

TOM DAVIDSON
GEOLOGIST



28550 IH-10 WEST SUITE #4
BOERNE, TEXAS 78006

BUS: (210) 844-8963
RES: (830) 981-5883
FAX: (830) 981-5567
CEL: (210) 844-8963

E-MAIL
tomgeo@gvfc.com

SeismicVentures

Sara Davis
Business Development Manager
s_davis@seismicventures.com


Seismic Ventures, LLC
4805 Westway Park Blvd.
Suite 100
Houston, Texas 77041

tel: 281-240-1234 (x3206)
cel: 713-256-8737
fax: 281-240-4997
www.seismicventures.com

ONE APEX ENERGY, INC.

CHRISTIAN DOHSE
Consulting Geologist

(361) 877-3431
CHRISTIAN.DOHSE@GMAIL.COM
CORPUS CHRISTI, TX



Tommy Dubois
Geologist

2627 CR 312
Yoakum, Texas 77995

361-215-0223
tvdubois@yahoo.com

Enrique (Rick) Garza
Operation Supervisor
US Land

 **Global Geophysical Solutions**

Rick.Garza@GlobalGeophysical.com
direct +1 713-808-7428
mobile +1 361-701-6480
fax +1 713-808-7928
13927 South Gessner Road
Missouri City, Texas 77489 USA
www.GlobalGeophysical.com

GISLER BROTHERS LOGGING Co., Inc.

P.O. BOX 485
106 E. MAIN
RUNGE, TX 78151



Wes Gisler
Bus. (830) 239-4651
Mobile (361) 676-1369
wes@gislerbrotherslogging.com

Home (830) 239-4914
Direct (830) 239-4693

Robert Graham
President
grexploration@gmail.com

Phone 361-882-7681
Fax 361-882-7685
Cell 361-774-3635


GrX Inc.
Exploratory Prospects & Production Development

Mail: P. O. Box 1843
Corpus Christi, Texas
78403-1843

Office: 606 N. Carancahua, Ste. 610
Corpus Christi, Texas
78401-0634

 **RAY GOVETT, Ph. D.**
CONSULTING GEOLOGIST

361-855-0134

 **HART EXPLORATION, LLC.**

RICK HART
Geologist / Owner

P.O. Box 729
Coldspring, Texas 77331


Cell: 512-626-3053
Email: hartexploration@aol.com

RIVIERA EXPLORATION, LLC

H. TONY HAUGLUM
President

600 LEOPARD ST.
SUITE 1704
CORPUS CHRISTI
TEXAS 78401


PHONE 361.884.1811
FAX 361.884.8071
E-MAIL THAUGLUM@SWBELL.NET

 **PES SUEMAUR EXPLORATION & PRODUCTION, LLC**

BRENT F. HOPKINS
PRESIDENT AND CEO
GEOLOGIST

OFFICE: (361) 884-8824
FAX: (361) 884-9623
RES: (361) 643-8373
CELL: (361) 215-4855
Email: brenth@suemaur.com


FROST BANK PLAZA
802 N. CARANCAHUA, SUITE 1000
CORPUS CHRISTI, TEXAS 78401-0015

 **eogresources**

EOG Resources, Inc.
539 N. Carancahua
Suite 900
Corpus Christi, TX 78401-0908
Direct: (361) 887-2681

Randy Lambert
Geological Advisor

Fax: (361) 844-1546
randy_lambert@eogresources.com

 **LMP Petroleum, Inc.**

615 N. Upper Broadway, Suite 1770
Corpus Christi, TX 78477
Tel: (361) 883-0923
Fax: (361) 883-7102
E-mail: geology@LMPexploration.com

**James R. Jones
Geologist**

7434 Long S Drive
Corpus Christi, TX 78414
361-779-0537
jrjones5426@aol.com

"The Mud Stops Here"



STRATA CONTROL
an innospec® company

**STRATA-VANGUARD® - STRATA-FLEX® - FRAC-ATTACK®
STRATA-TROL® - FOAM-BLAST® - STRATA-LUBE®**

P.O. Box 272 Crowley, LA 70527-0272
Toll Free 1-888-856-0001
www.stratacontrol.com

Office (337) 785-0000
Fax (337) 785-0004
Mobile (361) 739-9667
Email luke@stratacontrol.com

Nicola Maitland
Client Training and Support Manager



431 Mason Park, Suite B
Katy, Texas 77450

Direct: 713-972-6209
Cell: 281-507-6552
Fax: 281-395-6999

www.resolvegeo.com Email: nmaitland@resolvegeo.com

CURTIS R. MAYO
GEOLOGICAL CONSULTANT

Reserve Analysis Prospect Evaluation
Expert Witness Prospect Generation

Fredericksburg, Texas 78624
Office: 830.992.2938 Cell: 830.765.0628 E-Mail: cmayo@cresc.net

**HOLLIMON
OIL
CORPORATION**

ARMANDO (MANDY) MEDINA
EXPLORATION MANAGER

8610 N. NEW BRAUNFELS SUITE 705 SAN ANTONIO, TEXAS 78217
amedina@hollimonoil.com
OFF: (210) 829-8822 FAX: (210) 829-8833

Dennis O. Moore
Formation Evaluation
Wireline Systems - Southern Area



800 N. Shoreline Blvd., Suite 700 N. Tower
Corpus Christi, Texas 78401-3771
Office: 361-883-1561
Fax: 361-883-4390
Cell: 361-816-5144
Email: dennis.moore@bakerhughes.com

www.bakerhughes.com



J. Mark Miller
President

Phone (361) 883-7700
Fax (361) 883-7701
mark@millersmithgas.com
545 N. Upper Broadway
Suite 400
Corpus Christi, Texas 78476

Wellhead Gas Marketing

**YOUR CARD COULD BE HERE!!!
\$30 FOR 10 ISSUES
AD PRICES PRO-RATED
EMAIL CHRISTIAN AT
CHRISTIAN.DOHSE@GMAIL.COM**

Mailing Address
615 Leopard, Ste. 640
Corpus Christi, Texas 78401-0641
361.882.7889 phone
361.882.7889 fax
361.946.2581 mobile

Contact Address
1701 Southwest Parkway, Ste. 109
College Station, Texas 77840
866.946.2581 phone
866.946.2580 fax

pmueller@muelrexp.com
www.muelrexp.com



J. Paul Mueller, Jr.
President

NEU OIL & GAS, L.L.C.

Daniel J. Neuberger
Geologist and President

Austin Office: 712 Windsong Trail West Lake Hills, Texas 78746
Office (361) 548-7723
Home (512) 306-1223
dan@neuoilandgas.com

Patrick Nye
President
patrick@nyexp.us

Office: (361) 452-1435
Cell: (361) 658-1089
Res: (361) 238-2146

NYE
Exploration & Production, LLC

802 N. Carancahua, Suite 1840
Frost Bank Plaza
Corpus Christi, TX 78401
www.nyexp.us



Ken Oriaska
Account Manager



281-497-8440
Direct: 281-249-5051
Fax: 281-558-8096
Cell: 832-455-1818
e-mail: korlaska@geotrace.com
12141 Wickchester Lane, Suite 200
Houston, Texas 77079
www.geotrace.com



**Herradura
Petroleum, Inc.**

JEFF OSBORN
Geologist

711 N. Carancahua, Ste. 1750
Corpus Christi, Texas 78475
e-mail: jeff@herradurapetroleum.com

Office: 361-884-6886
Fax: 361-884-9102
Cell: 361-537-2349

SWIFT ENERGY COMPANY



RICHARD M. PARKER P.G.
Manager / Geological Operations
TBPG License # 6056

(281) 874-2585
Mobile # 1 (713) 794-4380
Mobile # 2 (713) 906-3158
Home: (281) 412-0745
16825 NORTHCHASE DR., SUITE 400
HOUSTON, TEXAS 77060 E-mail: richard.parker@swiftenergy.com



Beth Priday
Senior Geologist

615 North Upper Broadway
Suite 525, WF168
Corpus Christi, Texas 78477
Bus (361) 882-3046
Fax (361) 882-7427
Mobile: (361)443-5593 • E-mail: bpriday@virtexoperating.com

**Minerals Exploration and Mining
Uranium In Situ Leach**

Richard M. Rathbun, Jr.
Certified Professional Geologist 9544 / AIPG
Texas Board of Prof. Geoscientists / Lisc. No. 4679

921 Barracuda Pl.
Corpus Christi, Texas 78411

(361) 903-8207
rathbunassoc@msn.com



Wireline Services

Weatherford International Ltd.
401 E. Sonterra Blvd., Suite 1
San Antonio, Texas 78258
USA

Sam Roach
US Guld Coast Wireline Sales

+1.210.930.7588 Direct
+1.210.930.7610 Fax
+1.210.241.2463 Mobile

sam.roach@weatherford.com
www.weatherford.com

First Rock, Inc.

RGR Production First Rock I, LLC

Gregg Robertson

Main Office:
600 Leopard, Suite 1800
Corpus Christi, TX 78401
361-884-0791

Field Office:
5574 FM 1344
Floresville, TX 78114
830-484-1122



Alvin Rowbatham
Sales, Gulf of Mexico

Main +1 713 789 7250
Direct +1 281 781 1065
Fax +1 713 789 7201
Mobile +1 832 372 2366
alvin.rowbatham@iongeo.com

2105 CityWest Blvd. | Suite 900
Houston, TX 77042-2839 USA

TOM SELMAN
selmanlog.com
tselman@selmanlog.com

Ofc. (432) 563-0084
(800) 578-1006
Cell (432) 288-2259



GEOLOGICAL CONSULTING / SURFACE LOGGING SERVICES

P.O. Box 61150 Midland, TX 79711 4833 Saratoga #624 Corpus Christi, TX 78413 P.O. Box 2993 Rock Springs, WY 82902



Petrophysics, Inc.
Velocity Surveys • Synthetics • Sonic Log Data

P.O. Box 863323
Plano, Texas 75086

Joe H. Smith
President

713.560.9733
jsmith@petrophysics.com
www.petrophysics.com

Crossroads Exploration

Gloria D. Sprague
Geologist

Timpson Building
189 N. First Street, Suite 111
Timpson, Texas 75975
E-Mail: gsprague@usawide.net

Office: (936) 254-3600
Fax: (936) 254-3602
Mobile: (936) 488-9428

Charles A. Sternbach, Ph.D
President

Star Creek Energy Company
Oil and Gas Exploration

800 Wilcrest Drive, Suite 230
Houston, Texas 77042
office: 281.679.7333
cell: 832.567.7333
carbodude@gmail.com



www.starcreekenergy.com

THOMAS W. SWINBANK

CERTIFIED PETROLEUM GEOLOGIST
PRESIDENT

STRIKE OIL & MINERALS CORP.
P.O. Box 1399
GEORGETOWN, TEXAS 78627

PHONE/FAX 512-863-7519
HOME 512-863-7903
CELL 512-876-9565

Dennis A. Taylor
President & Chief Geologist
dennis@amshore.com

Off: (361) 888-4496
Fax: (361) 888-4588
Direct Line: (361) 844-6728
Cell: (972) 672-9916



AMERICAN SHORELINE, INC.

AMSHORE US WIND, L.L.C.
802 N. Carancahua Street, Suite 1250
Corpus Christi, Texas 78401-0019
www.amshore.com

Environmental

Exploration & Production

JEANIE TIMMERMANN
GEOSCIENTIST
TX LICENSE #2289

7214 Everhart #9 (361) 991-7451
Corpus Christi, TX 78413 jtimmermann74@msn.com



Davis Petroleum Corp.

www.davispetroleumcorp.com

Jim Trevillo
Senior Geoscientist

1330 Post Oak Boulevard
Suite 600
Houston, Texas 77056

Direct: 713.439.6773
Main: 713.626.7766
Fax: 713.626.7775
Cell: 713.823.9392

jtrevillo@davcos.com



10001 Richmond Avenue
Houston, TX 77042-4299
P.O. Box 2469 (77252-2469)
Tel: 713-689-6562
Fax: 713-689-1089
Mobile: 281-615-6827
CTutt@slb.com

Chris O. Tutt
Sales Representative
NAM Sales

SEBASTIAN P. WIEDMANN
GEOSCIENTIST

WILSON PLAZA WEST
606 N. CARANCAHUA, SUITE 500
CORPUS CHRISTI, TEXAS 78401
swiedmann@braytoncc.com

OFFICE (361) 884-4084
FAX (361) 882-7816
MOBILE (361) 946-4430



Dave Willis
Onshore Sales

Main +1 713 789 7250
Direct +1 281 781 1035
Mobile +1 281 543 6189
Fax +1 713 789 7201
dave.willis@iongeo.com

2105 CityWest Blvd. | Suite 900
Houston, TX 77042-2839 USA



10001 Richmond Avenue
Houston, Texas 77042-4299
P.O. Box 2469 (77252-2469)
Tel: 713-689-2757
Fax: 713-689-1089
Mobile: 281-658-5263
CYanez@slb.com

Charles Yanez
Manager
Shared Value Optimization



WILLIAM A. WALKER, JR.
Certified Petroleum Geologist
bwalker@stalkerenergy.com

1717 WEST 6TH STREET, STE. 230 • AUSTIN, TX 78703
2001 KIRBY DR., STE. 950 • HOUSTON, TX 77019

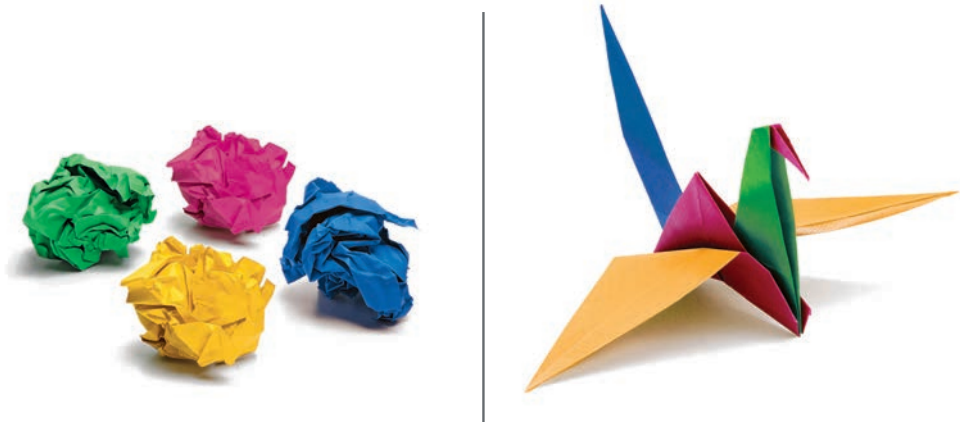
AUSTIN

512.457.8711
cell: 512.217.5192
fax: 512.457.8717

HOUSTON

713.522.2733
cell: 512.217.5192
fax: 713.522.2879

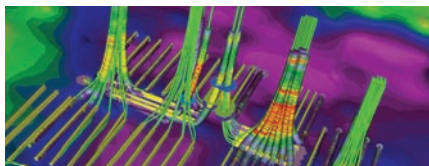
YOUR CARD COULD BE HERE!!!
\$30 FOR 10 ISSUES
AD PRICES PRO-RATED
EMAIL CHRISTIAN AT
CHRISTIAN.DOHSE@GMAIL.COM



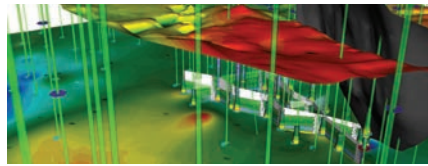
Build reservoir analyses. Watch your potential soar.

IHS PETRA® provides a unique solution to integration, analysis and manipulation of geological, geophysical, petrophysical and engineering information. With easy data loading and a powerful and flexible database, you can both effectively manage projects and quickly visualize results using interactive mapping, cross sections, log plots, cross plots and more—all within a single system. Superior technical support and proven integration of customer enhancements make PETRA the highest-ranked¹ geological interpretation tool in the E&P industry for both reliability and accuracy and ease of use. **Energy information, refined.**

¹Welling & Company Geological & Geophysical Software Study, 2009



Directional Well Module



3D Visualization Module

ihs.com/petra-ccgs-1



The Source
for Critical Information and Insight

©2010 IHS Inc. All rights reserved.