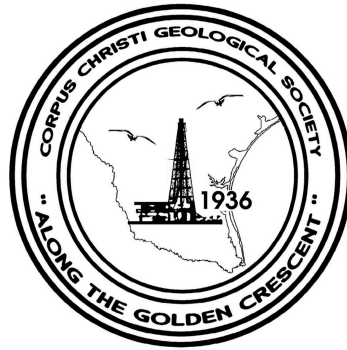


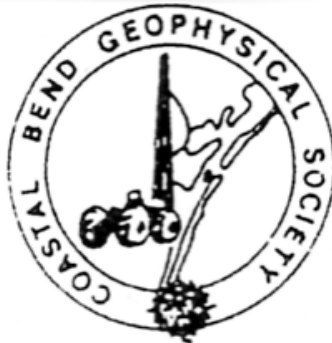
BULLETIN

**Corpus Christi
Geological Society**



and

**Coastal Bend
Geophysical Society**



**January
2016
ISSN 0739 5620**

American Shoreline, Inc.



Specializing in
Oil & Gas Exploration
& Wind Energy

Compliments of

Paul Strunk, Chief Executive Officer
Dennis Taylor, President & Chief Geologist
Jena Nelson, VP Finance & Administration

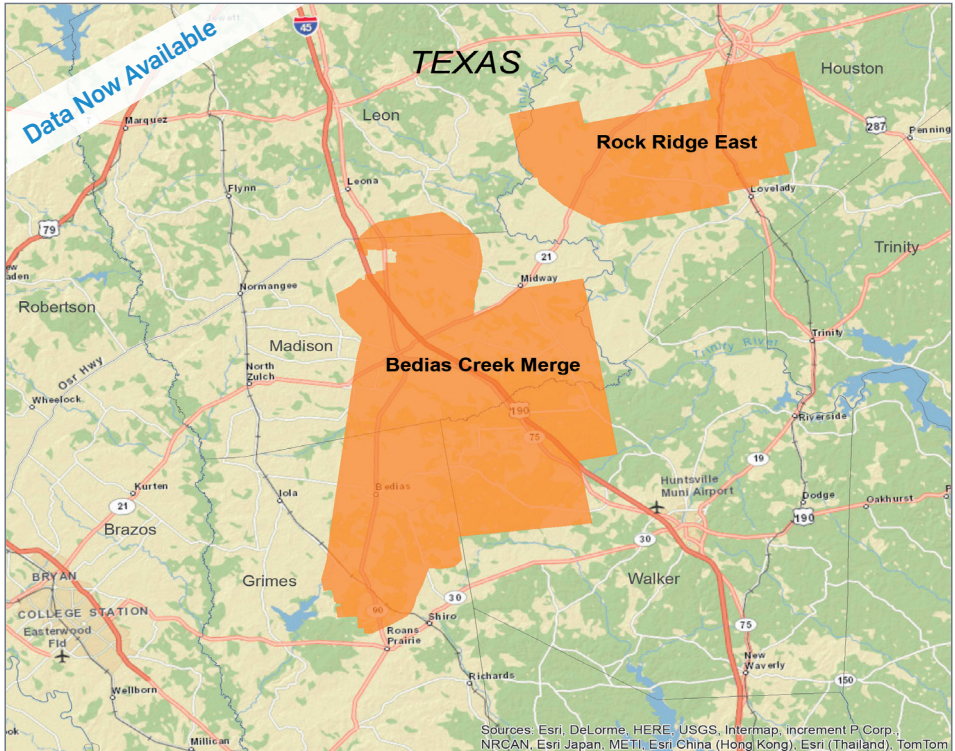
802 N. Carancahua
Frost Bank Plaza, Suite 1250
Corpus Christi, Texas 78401
(361) 888-4496

www.amshore.com



Bedias Creek Merge Madison, Grimes, Walker, and Leon Counties, Texas

YOU'VE ARRIVED



CGG offers the industry's most recent and technologically advanced multi-client data library in the world's key locations. Here is what Bedias Creek has in store:

- 110-fold data acquired using cableless **Sercel UNITE** crews and a dynamite source
- State-of-the-art processing, including 5D Interpolation and Orthorhombic Pre-Stack Time Migration

The best data, the right location, the right time!

Scott Tinley
 +1 832 351 8544
 scott.tinley@cgg.com

Cheryl Oxsheer
 +1 832 351 8463
 cheryl.oxsheer@cgg.com



cgg.com/multi-client



CORPUS CHRISTI GEOLOGICAL SOCIETY

P.O. BOX 1068 * C.C. TX. 78403

2015-2016

www.ccgeo.org

OFFICERS

President	Mike Lucente	361-883-0923	mikel@impexploration.com
President Elect	Barbara Beynon	361-387-9400	bbeynon77@yahoo.com
Vice President	William Thompson	361-242-3113	William.Thompson@rrc.texas.gov
Secretary	Casey Mibb	361-726-1092	clmibb@yahoo.com
Treasurer	Austin Nye	361-452-1435	austin@nyexp.us
Past President	Leighton Devine	361-510-8872	ldevine@suemaur.com
Councilor I	Rick Paige	361-884-8824	rickp@suemaur.com
Councilor II	Randy Bissell	361-885-0113	randyb@headington.com

AAPG DELEGATE

2006-2016	Dennis Moore	361-886-5144	dennis.moore@bakerhughes.com
-----------	--------------	--------------	--

EDITORS

Bulletin Editor	Marian Wiedmann	361-855-2542	wiedgulf@gmail.com
Bulletin Tech. Editor	Sebastian Wiedmann	361-946-4430	swiedmann.geo@gmail.com
Web Master	Josh Pollard	361-654-3100	support@interconnect.net

GEOLOGICAL SOCIETY COMMITTEES & CHAIRPERSONS

Advertising/ Business Cards	Robert Sterett	361- 739-5618	robert.sterett@gmail.com
Arrangements	Wes Gisler & Will Graham	830-239-4651 361-885-0110	wes@gislerbrotherslogging.com willg@headingtonenergy.com
Bloodmobile	Mike Lucente	361-883-0923	mikel@impexploration.com
Earth Day	Alan Costello	361-888-4792	acostello@royalcctx.com
Continuing Ed.	Stephen Thomas	361-660-8694	stthomas@spnaturalresources.com
Education	J. R. Jones	361-779-0537	jrjones5426@aol.com
Scholarship	Dawn Bissell	361-960-2151	bissells@swbell.net
Fishing Tournament	Leighton Devine	361-882-8400	ldevine@suemaur.com

History	Ray Govett	361-855-0134	ray30@hotmail.com
Membership	Dorothy Jordan	361-885-0110	dorothyj@headington.com
	Randy Bissell	361-885-0113	randyb@headington.com
Type Logs	Frank Cornish	361-883-0923	frank.cornish@gmail.com
University Liaison	Zach Corcoran	361-902-2857	zcorcoran1982@gmail.com



COASTAL BEND GEOPHYSICAL SOCIETY
P.O. BOX 2741 * C.C. TX. 78403
2015-2016

OFFICERS

President	Lonnie Blake	361-883-2831	lonnie_blake@eogresources.com
Vice President	Tom Harrington	361-902-2886	tom_harrington@eogresources.com
Secretary/ Treasurer	Matt Hammer	361-888-4792	mhammer@royalcctx.com

COMMITTEES AND CHAIRPERSONS

Membership	Dorothy Jordan	361-885-0110	dorothyj@headington.com
	Randy Bissell	361-885-0113	randyb@headington.com
Golf Chairman	Fermin Munoz	361 960-1126	fmunoz04@hotmail.com
Scholarship/ Chairman	Ed Egger	361-947-8400	edegger69@gmail.com
Education			

**Visit the geological
Web site at
www.ccgeo.org**

SPONSORS

Performance You Can Count On

An acknowledged leader in today's exploration and production industry, EOG Resources looks ahead.

Annually, EOG is one of the most active drillers in the United States. We grow through the drill bit, rather than seeking major acquisitions or mergers to bolster our reserves and production. This unrelenting focus on organic production growth has proven successful because we have identified significant North American resource plays for tomorrow. Our creative, hardworking explorationists and those who support them utilize the latest technology available in the marketplace, adapting and modifying it to meet the challenges EOG faces. With a focus on returns, EOG continues to produce peer-leading financial and operational results.

In 2013, EOG became the largest onshore oil producer in the Lower 48, and we're still growing.

EOG Resources, Inc.

539 N. Carancahua
Suite 900
Corpus Christi, TX 78401-0908
361-883-9231
www.eogresources.com



EXPLORING SINCE 1968



802 N. Carancahua St
Suite 1000
Corpus Christi, TX 78401-0015
Phone: (361) 884-8824
Fax: (361) 884-9623

TABLE OF CONTENTS

Officers, Committees, and Chairpersons, CCGS, CBGS.....	2 & 3
Calendar of Meetings and Events.....	6 & 7
CCGS President's Letter.....	9
Blood Drive.....	10
CBGS President's Letter.....	11
Luncheon Meeting Announcement.....	14
GCAGS 2016 Explore the Future.....	18
Scholarships.....	19
The Shale Revolution - The Impact on North American Hydrocarbon Prices.....	20
CCGS papers available for purchase at the Bureau of Economic Geology.....	40
Geo Link Post.....	41
Type Logs of South TexasFields.....	42
Wooden Rigs Iron Men.....	43
Order OIL MEN DVD.....	44
Professional Directory.....	45

CCGS/CBGS JOINT MEETING SCHEDULE 2015-2016

September 2015							October 2015							November 2015						
S	M	T	W	Th	F	S	S	M	T	W	Th	F	S	S	M	T	W	Th	F	S
		1	2	3	2	5					1	2	3	1	2	3	4	5	6	7
6	7	8	9	10	11	12	4	5	6	7	8	9	10	8	9	10	11	12	13	14
13	14	15	16	17	18	19	11	12	13	14	15	16	17	15	16	17	18	19	20	21
20	21	22	23	24	25	26	18	19	20	21	22	23	24	22	23	24	25	26	27	28
27	28	29	30				25	26	27	28	29	30	31	29	30					

Sept. 10, 2015
5:30p.m.—8:30p.m.
Kickoff BBQ
Hoegemeyer’s Barbeque Barn

Oct. 28—11:30a.m.—1:00p.m.
Speaker: Neil Peake, CCG Geo
Consulting Seismic Reservoir
Characterization.
“Unconventional Reservoirs:
An Integated Workflow
Incorporating Surface Seismic,
Mineralogy, & rock Properties
in the Haynesville Shale.”

Nov. 18—11:30a.m.—1:00p.m.
Speaker: Lorenzo Garza & Joe
Stasulli, Railroad Commission of
Texas. “Horizontal Drilling in Texas:
A Tale That Begins in the Austin
Chalk, but Whose Ending Has Yet
To be Written.”

December 2015							January 2016							February 2016						
S	M	T	W	Th	F	S	S	M	T	W	Th	F	S	S	M	T	W	Th	F	S
		1	2	3	4	5						1	2		1	2	3	4	5	6
6	7	8	9	10	11	12	3	4	5	6	7	8	9	7	8	9	10	11	12	13
13	14	15	16	17	18	19	10	11	12	13	14	15	16	14	15	16	17	18	19	20
20	21	22	23	24	25	26	17	18	19	20	21	22	23	21	22	23	24	25	26	27
27	28	29	30	31			24	25	26	27	28	29	30	28	29					

Dec. 9—11:30a.m.--1:00p.m.
Speaker: Dmitri Bevc, Ph.D.,
Chevron, SEG Distinguished
Lecturer “Full Wave-Form
Inversion: Challenges,
Opportunities and impact”

Jan. 20--11:30a.m.—1:00p.m.
Speaker: Charles Sicking, VP
of R&D/Chief Geophysicist,
Global Geophysical Services,
Inc. “Predicting Frac
Performance and Active
Producing Volumes Using
Microseismic Data”

Feb. 17—11:30a.m.—1:00p.m.
Speaker: Collegiate Month.

CCGS/CBGS JOINT MEETING SCHEDULE 2015-2016

March 2016							April 2016							May 2016						
S	M	T	W	Th	F	S	S	M	T	W	Th	F	S	S	M	T	W	Th	F	S
		1	2	3	4	5						1	2	1	2	3	4	5	6	7
6	7	8	9	10	11	12	3	4	5	6	7	8	9	8	9	10	11	12	13	14
13	14	15	16	17	18	19	10	11	12	13	14	15	16	15	16	17	18	19	20	21
20	21	22	23	24	25	26	17	18	19	20	21	22	23	22	23	24	25	26	27	28
27	28	29	30	31			24	25	26	27	28	29	30	29	30	31				

March 16—11:30a.m.—1:00p.m.
Speaker:

April 20—11:30a.m.—1:00p.m.
Speaker:

May 18—11:30.m.—1:00p.m.
Distinguished Speaker:

Calendar of Meetings and Events

Calendar of Area Monthly Meetings

Corpus Christi Geological/Geophysical Society.....	Third Wed.—11:30a.m.
SIPES Corpus Christi Luncheons.....	Last Tuesday—11:30a.m.
South Texas Geological Society Luncheons.....	Second Wed—noon San Antonio
San Antonio Geophysical Society Meetings.....	Fourth Tuesday
Austin Geological Society.....	First Monday
Austin Chapter of SIPES.....	First Thursday
Houston Geological Society Luncheons.....	Last Wednesday
Central Texas Section of Society of Mining, Metallurgy & Exp.....	2 nd Tues every other month In San Antonio

sponsors



Winn Exploration Co., Inc.

Actively Seeking High Quality
Drilling Prospects

Contacts:

Mike Layman (Geophysicist)	361-844-6922
Tom Winn (Geologist)	361-844-6992
Southern Winn (Geologist)	361-844-6998

800 North Shoreline Blvd.
19th Floor, North Tower
Corpus Christi, Texas 78401

Office: 361-844-6900 Fax: 361-844-6901

WEL-LAB

HYDROCARBON LOGGING SERVICE



Operating in South Texas and Gulf Coast since 1961

Contact: Mike Bullard

P.O. Box 1011

Kingsville, Texas 78364

361-221-9717

Email: md_bullard@sbcglobal.net

A Great Place For Business

In the heart of the Business District
Broadway at Leopard

- Onsite Management
- Conference Room
- Deli & Vending Room
- Security Card Access
- High Speed Elevators
- View of Corpus Christi Bay

COMMITTED TO EXCELLENCE
Yesterday • Today • Tomorrow

The
600
BUILDING

Contact
Ellen Blasingame
698-6000

ecblasingame@netscape.net





MERRY CHRISTMAS, HAPPY HANUKKAH

AND

HAPPY NEW YEAR!!

I want to wish any and all members a very blessed holiday season. We all need to think of all the good things in life and love our family members. Let's try to not dwell on the cloudy future.

We all need to try to get ahead of the curve in-so-far as anticipating what type of prospects the market may bare now, and in a higher oil or natural gas environment in the future. This is not easy, but is necessary. Make yourself as relevant as possible to your employers and go above and beyond in all your efforts. The cream does rise to the top.

To the groups that were flying very high during the intense drilling in the "shale plays", the same advice holds. The past plays on the original Austin Chalk were exposed to the same oil price swings. There were "sweet spots" that were drilled as commercial and profitable to those who studied the trend very hard and worked the stratigraphy and better understood the fracture geometry. Deals can be made now! Leases may be expiring and the \$5,000.00 per acre lease bonuses may become a bonus free term assignment to a new investor.

New seismic acquisitions and innovative processing could unlock many a complex geological environment or may shed light on subtle but important "amplitude work" on layer cake plays that may give up key information not obvious on conventional approaches.

Good luck to you all!

Sincerely,

Mike Lucente

BLOOD DRIVE

THE BLOODMOBILE – IN JANUARY, 2016
WILL BE AT SOME CONVENIENT LOCATIONS
PLEASE CALL 855-4943 for those locations or see below



PLEASE MAKE ONE NEW YEAR'S RESOLUTION & GO
DONATE BLOOD!!!



ATTENTION!!!

When you give blood: They have us listed as C.C. Geological Society. Our number with them is 4254 & it would be helpful if you can give them that number also.

**FOR CURRENT SCHEDULES & LOCATIONS OF THE
BLOODMOBILES YOU CAN LOG ON TO:**

www.coastalbendbloodcenter.com

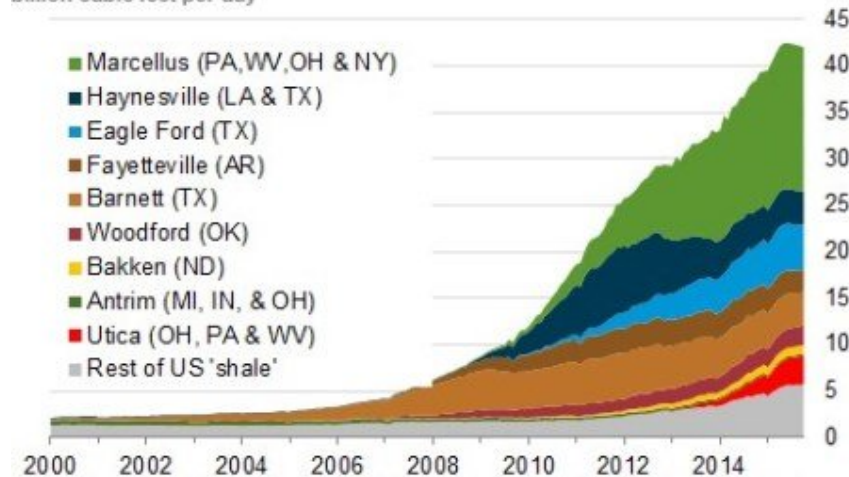
This message approved by Mike Lucente....



CBS President's Letter

News - Still haven't found any data on seismic crew counts. Following is the best source of seismic news I've found, but no crew count. http://www.rigzone.com/news/oil_gas/t/9/Seismic Oil has been below \$40/bbl for 2 straight days. Natural gas is struggling to stay above \$2/Mcf. What is the bottom?

Monthly dry shale gas production
billion cubic feet per day



Sources: EIA derived from state administrative data collected by DrillingInfo Inc. Data are through October 2015 and represent EIA's official shale gas estimates, but are not survey data. State abbreviations indicate primary state(s).



Natural gas spot prices (Henry Hub)



Source: Natural Gas Intelligence

Business - CBGS had a meeting to discuss golf tournament, scholarships and other education support. We will award 2 scholarships for the 2016/17 academic year even if it requires using some of the current funds on hand. Discussion occurred around supporting the TAMU-K Geophysics/Petrophysics program. Options are being explored. CBGS is going to investigate opportunities for a 1 day geophysical forum.

Education - - GSH

No education events on the calendar. Numerous technical luncheons if you happen to be in Houston. Check following link.

[Geophysical Society of Houston Calendar](#)

CBGS has a revenue sharing agreement with GSH, so please mention CBGS if you register for any GSH events.

- SEG

NEW - 2015 SEG Convention Technical Program Recording: Available at the following link -xxxxx

Gravity and Magnetics for Explorationists, 25-26 January, Houston, Michal Ruder

[Microseismic Monitoring in Oil or Gas Reservoir -](#) , Houston, Leo Eisner, 25-26 January 2016

[A Practical Understanding of Inversion for Exploration Geophysics -](#) , Houston, John Bancroft, 27-28 January 2016

Understanding and Adapting Rockphysics Principles for Mudrock (Shale) Reservoirs, OK City, Manika Prasad, 29Feb/1Mar

SEG has 450+ eLearning courses online from \$0.99 to \$150.00(most expensive I saw)

Error! Hyperlink reference not valid.

- AAPG

Fundamentals of Reservoir Characterization and Modeling, 11 January/Abilene, 12 January Ft Worth

Deepwater Reservoirs, 10 February, Houston

Thought for the month

I was seldom able to see an opportunity until it had ceased to be one. ~Mark Twain

Monthly O&G Statistics

Texas Oil and Gas Info	Current Month	Last Month	Difference	
Texas Production	MMBO/BCF	MMBO/BCF	MMBO/BCF	
Oil	73	79	-6	Sept
Condensate	10	11	-1	
Gas	619	680	-61	Sept
	Current Month	Yr to date - 2015	Yr to date - 2014	
Texas Drilling Permits	687	9,822	24,286	Nov
Oil wells	173	2,401	7,085	
Oil and Gas	441	6,145	14,826	
Gas wells	47	724	1,342	
Other	11	137	184	
Total Completions	965	18,510	27,595	Nov
Oil Completions	776	14,790	23,440	
Gas Completions	150	2,636	3,232	
New Field Discoveries	3	59	42	
Other	39	1,084	923	

Thought for the month:

A vision without a task is but a dream, a task without a vision is drudgery, a vision with a task is the hope of the world

- Inscription on a wall in Sussex England, circa 1730

Lonnie Blake—CBGS President

SPONSORS

KNOWLEDGE REVEALED

PURPOSE DRIVEN

- Unrivaled land seismic acquisition capabilities
- Specific solutions for all terrains and environments (land, shallow water/transition zone and OBC)
- Purpose driven crews with proven experience around the world
- Processing and Interpretation services revealing the project knowledge you need
- Full azimuth 3D and 3C coverage in unconventional resource plays
- Multi-Client opportunities in North America, Latin America and Australasia
- Proven experience in:
 - Azimuthal anisotropy resolution and fracture identification
 - Multicomponent processing
 - AVO processing and inversion



INNOVATIVE
GEOPHYSICAL
SOLUTIONS



geokinetics.com



**CORPUS CHRISTI GEOLOGICAL SOCIETY & COASTAL BEND
GEOPHYSICAL SOCIETY**



LUNCHEON MEETING ANNOUNCEMENT

WEDNESDAY, JANUARY 20th, 2016

-
- Location:** Congressman Solomon P. Ortiz International Center, 402 Harbor Drive, Corpus Christi, TX 78401 <http://ortizcenter.com>
- Bar Sponsor:** To be announced (*sponsors needed!*)
- Student Sponsor:** Core Laboratories and Global Geophysical Services
- Time:** 11:30 am Bar, Lunch follows at 11:45 am, Speaker at 12:00 pm
- Cost:** \$25.00 (additional \$10.00 surcharge without reservation; No-shows may be billed and non-RSVP attendees cannot be guaranteed a lunch); *FREE* for students (discounted by our generous sponsors)!
- Reservations:** Please RSVP by 4PM on the FRIDAY before the meeting!
E-Mail: wes@gislerbrotherslogging.com

Please note that luncheon RSVPs are a commitment to the Ortiz Center and must be paid even if you can't attend the luncheon.



<http://www.corelab.com>



<http://www.globalgeophysical.com>

Please thank our generous sponsors!!

Predicting Frac Performance and Active Producing Volumes Using Microseismic Data

Presented by: Charles Sicking, Ph.D., Vice President of Research and Development,
Global Geophysical Services

Summary

The use of the depth imaging fracture extraction method provides predictive value for reservoir development and management. Passive recordings are used to: 1) map the natural fractures in the reservoir; 2) map the fractures opened during the stage by stage treatment of a well; and, 3) compute the rock volume activated during production of the

reservoir fluids. The Fracture Imaging method uses streaming depth imaging to focus the energy emitted by the fractures in the rocks for computing the seismic emission volumes. Many seismic emission volumes are computed for a specified time interval. These volumes are integrated to compute a final seismic emission volume from which the detailed fracture volume is extracted. The method generates a map of fractures across an entire area of interest which can then facilitate the prediction of frac treatment performance before a well is drilled or completed. The method is also used for monitoring the fractures opened during the frac treatment. The stimulated rock volume (SRV) is computed from the seismic emission volumes that are computed during the frac. Passive recordings during well production are used to compute the detailed volume of rock that is activated by the flow of the fluids from the reservoir. The rock volume that is active during production is more representative of the volume that contains the proppant. However, this active producing volume (APV) changes over time. Computing the APV periodically over the years of production can be used to map the reservoir depletion over time, plan refracs, and determine future drilling and completion strategies.

Method

The fracture imaging method uses pre-stack depth migration to image passive recordings for each of many time windows. The depth volumes that are computed for each of the time windows are examined for noise contamination and then integrated to produce a single depth volume that is used for computing the fracture volumes. Fracture imaging is different from detecting and locating hypocenters or micro-earthquakes (MEQ). The hypocenter and MEQ methods detect short duration signals generated when the rocks slip over a short time interval. Seismic Emission Tomography (SET) method is used to focus the MEQ detections to find the locations. The fracture imaging method does not use detections or the SET method. The passive imaging method, instead, uses streaming depth imaging to compute the maximum focusing for every voxel in the depth volume for a selected time window. This is pre-stack depth imaging but the travel times are one-way instead of two-way. The seismic emission volume integrated for the entire clock time is used to extract the fracture systems used for mapping and producing volume computations. The focus of this talk is on examples of the seismic emission volumes and the associated fracture systems. The fracture imaging method is reviewed in order to lay the foundation.

Results

Examples from different basins show consistent correlation between the fractures mapped before drilling to the performance of the frac treatment. The fractures extracted during the well treatment for each stage are displayed in two ways. The accumulated intensity of the activity along the fracture zones during the pump time is used to show the most active fracture zones. The first time of opening for each fracture segment is tracked during the computations and this information allows for detailed investigations for the frac. Movies of the fracture opening times illustrates the episodic nature of the fracture activity and are useful for determining the optimum length of pumping time and

pressures. The fracture volumes computed during the frac treatment show the stimulated rock volume (SRV) that is activated by the treatment. The seismic emission volumes are extracted during well production over the years after the well is put on line. The activate fractures are extracted from these emission volumes and are used to show the Actively Producing Volume (APV) of rocks. The APVs are used to determine which parts of the well are producing and shows the fracture systems that are most productive. This provides data for planning future wells that will exploit the highest value areas of the reservoir. Using passive recordings collected periodically over months or years allows for tracking the changes of the rock volume that is producing.

About our Presenter:



Dr. Charles Sicking is currently the Vice President for R&D and Chief Geophysicist for Global Geophysical Services. During his tenure at Global Geophysical Services, Dr. Sicking has developed seismic processing algorithms including, azimuthal migration, HFVS separation, Harmonic Noise Filtering, and 3D SRME. Recently, Dr. Sicking led the seismic processing development of Global's fracture mapping microseismic processing system.

During his career in Geophysics, Dr. Sicking developed seismic processing algorithms in the areas of imaging, deconvolution, wavelet estimation, velocity analysis, filtering, interpolation, attenuation and AVO. Dr. Sicking led the development of the seismic wavelet processing flow and methodology for Arco's seismic processing system. He also developed technology for velocity model building for 2D and 3D models for use in Time-to-Depth and Depth imaging applications and was a key contributor to 3D pre-stack depth migration imaging teams. While in graduate school Dr. Sicking invented a new method for interpolation and extrapolation of digital signals. In other industries, Dr. Sicking was a key contributor and led the development of simulators for ground mapping synthetic aperture radars and for laser imaging systems.

Dr. Sicking received his B.A. in physics from the in 1969, and his Ph.D. in geophysics in 1980, both from the University of Texas at Austin.



<http://www.globalgeophysical.com>

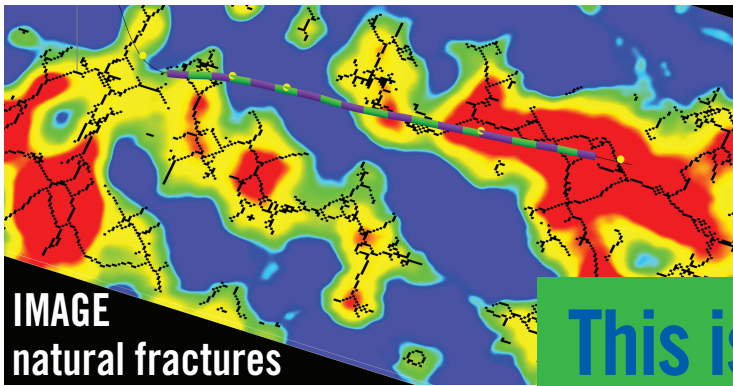
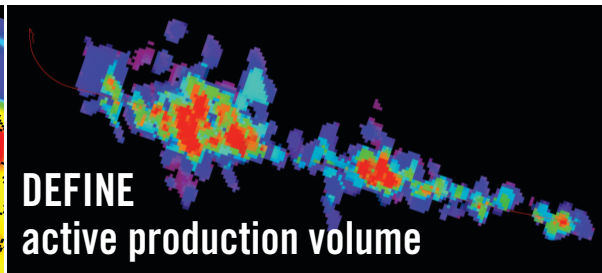
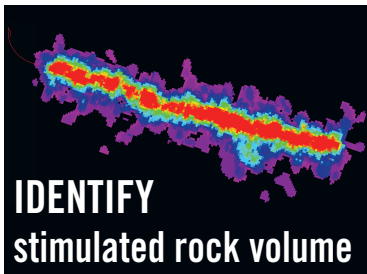


IMAGE
natural fractures

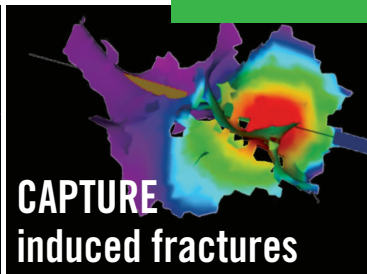


DEFINE
active production volume

This is AMBIENT Seismic.



IDENTIFY
stimulated rock volume



CAPTURE
induced fractures

Global Geophysical's innovative approach to ambient seismic provides direct imaging of acoustic activity in the subsurface. This allows us to identify areas or zones that are acoustically active due to natural fractures, hydraulic stimulation or production-related activities. Our ambient seismic results can be presented as 3D attributes, as discrete volumes of acoustic activity or as Tomographic Fracture ImagesSM.

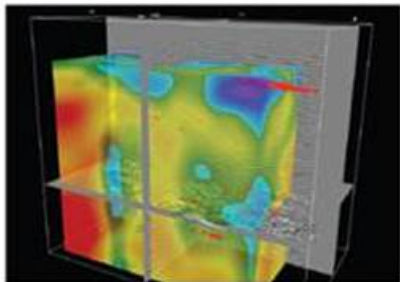
For more information:
www.globalgeophysical.com/AMBIENT or
Contact us at AMBIENT@globalgeophysical.com

Global Geophysical Services
+1 713-972-9200 www.globalgeophysical.com



SEIMAXSM
TECHNOLOGIES

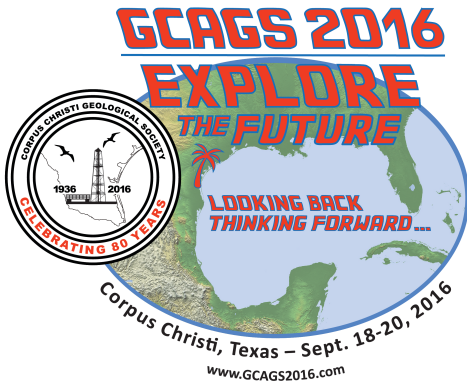
Innovative Seismic
Processing Solutions



**2D and 3D Land and Marine
Pre-Stack Time and Depth Imaging**

**Pre- and Post-Stack Attributes
for Amplitude, Frequency and
Resolution**

4805 Westway Park Blvd. Houston, TX 77041
p: 832.554.4301 www.seimaxtech.com



Plans for the GCAGS are moving along nicely.

Abstracts for presentations are coming in. The deadline is January 15th, so get your submission in soon. Eleven sessions are in the making as this is published. More may come to fruition.

Three exciting field trips are in the works and three more are being planned. There are field trips planned to the Rio Grande Delta and a Nueces River to GOM Geomorphology study. A Port of Corpus Christi/Refinery tour and the Ice Age Fossil Hunt are also being prepared. A field trip for K-12 science teacher is also in the works.

Several short courses are shaping up – from ancient clastics log analysis; biostratigraphy and basin analysis; to using geopressure in risk assessments. Two K-12 science teacher workshops are being formulated. More are being considered.

Of course we are soliciting sponsorships. If you are interested in being a sponsor (please say yes), and make your commitment by March 1st your ad/logo will be included in the Convention Announcement brochure that will be mailed to over 9000 members in May. This recognition is in addition to the immediate acknowledgement on the website, in the convention program guide, and in *The Transactions*. The sponsorship form can be found in this issue. Contact Lonnie Blake (361-876-6614) or me for more information.

Looking Back *Thinking Forward* . . .

Dawn Bissell
General Chairman
361-960-2151

The Corpus Christi Geological Society awarded \$8,000 in scholarships to 15 local students in November 2015.

TAMU-CC, TAMU-K, and Del Mar were all represented with scholarship recipients.

Texas A&M Corpus Christi Students were:

Sajjad Abdullajintakan, Audrey Douglas, Wendy Schwertner, Nicholas Spalt, and Brittney Tamborello.

Students from Texas A&M Kingsville were:

Tomisin Alagbe, Noelia Arredondo, Payton Campbell, Sara Dillon, Monica Estrada, Emily Hager-Hahn, and James Quisenberry.

Del Mar students were:

Byron Gorham, Kasondra Maleski, and Lenora Perkins.

The CCGS Scholarship fund received donations from member contributions, the CCGS Fishing Tournament and the Corpus Christi Oilman's Tennis Tournament proceeds. These donations are vital to allow the committee to fund the scholarships for our deserving students. Every donation is very much appreciated.

The next awards will be given in 2016.

The Scholarship Committee members are:

JR Jones, Vice-Chairman

Brent Hopkins, Treasurer

Bob Critchlow, Member

Beth Priday, Secretary

Mike Lucente, CCGS President


BJ Thompson, Member

Outgoing members are Leighton Devine, past president of the CCGS; and Patrick Nye who served as secretary and treasurer for 3 ½ year. Thank you both for your service and input to the scholarship committee.

Dawn S. Bissell

Scholarship Committee Chairman

SPONSORS



Nueces Energy, Inc.
P.O. Box 252
Corpus Christi, Texas 78403
Office: (361) 884-0435
Fax: (361)-654-1436
www.nuecesland.com

Nueces Energy, Inc. is a complete land services company in the business of providing professional landmen and project management to various energy related jobs primarily in the oil and gas industry.

With over 30 years of industry experience, we specialize in determining surface and subsurface ownership and negotiating and acquiring contracts, rights of way agreements, and easements to provide our clients with the legal right to explore and develop oil and gas resources. We provide a full service land company capable of managing any project no matter how large or small.



THUNDER EXPLORATION, INC.
Celebrating 30+ years of prospect generation and exploration in the following South Texas plays and trends.

Frio	San Miguel	Edwards
Jackson	Austin Chalk	Pearsall
Yegua	Eagle Ford	Sligo
Wilcox	Buda	Cotton Valley
Olmos	Georgetown	Smackover

Thunder is currently seeking non-operated working interest participation in projects and prospects.

Contact **Walter S. Light Jr.**
President/Geologist
713.823.8288
EMAIL: wthunderx@aol.com

Headington Oil Company is now...



HEADINGTON
ENERGY PARTNERS, LLC

Proudly operating in South Texas.

For more information contact:
Randy Bissell, randyb@headingtonenergy.com or call 361-885-0113



Offices in Corpus Christi, Sarita, and McKinney, Texas - Exploring and Developing properties
In South Texas, Permian Basin, East Texas & Oklahoma



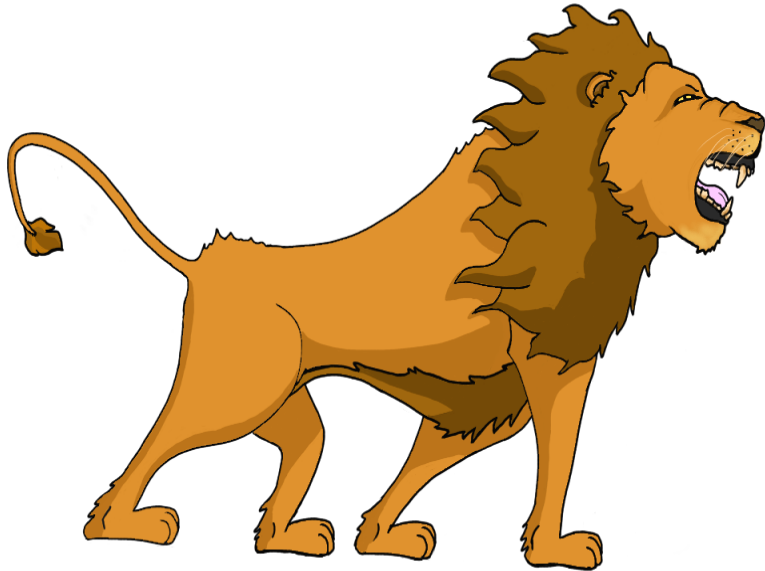
The Shale Revolution - The Impact on North American Hydrocarbon Prices

GCGS Corpus Christi

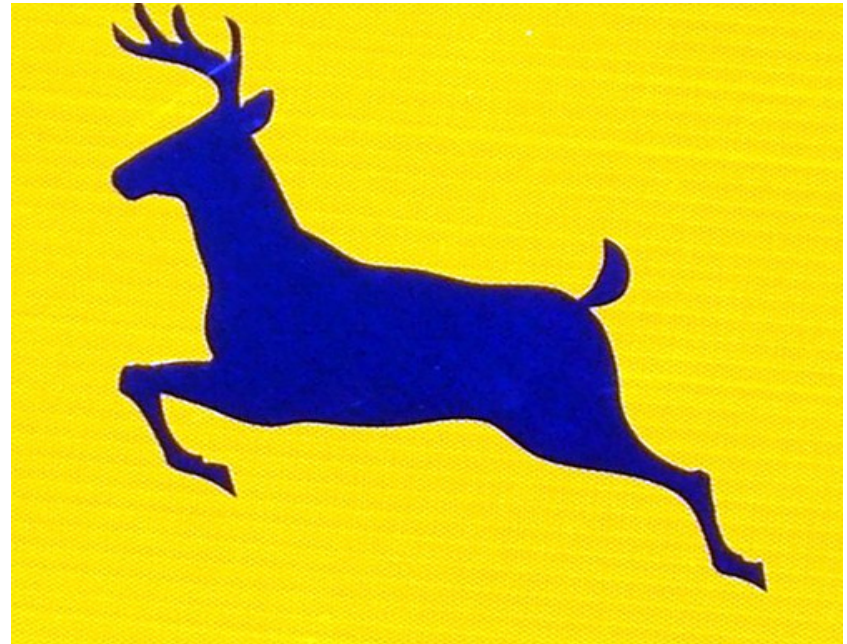
May 20, 2015

2015 E&P Employee

?



?



Market Outlook

- Natural Gas
- NGL's
- Oil
- Impact on US Economy
- Conclusions

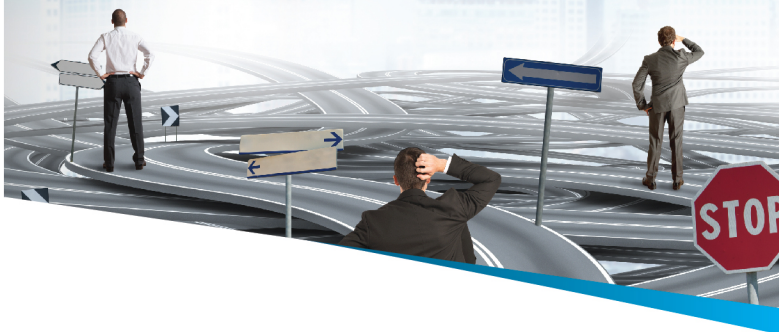
North American Gas



- Island commodity
- Not a pretty picture for producers
- Amount of shale gas is enormous relative to demand
- Marcellus and Utica will be the low cost basins
- Marcellus current production 13 BCFD (20% of US total)
 - By 2018 Marcellus/Utica production likely 23 BCFD (33% of US total)
 - This will reduce 2018 wellhead netbacks for Rockies/Canada gas

Licensing Data?

Don't Let Tape Copy Costs - Drive Your Decision



NEGOTIATE
your tape copies of field data
BEFORE signing contract.

What are your well costs?

\$3 MM, \$5 MM, \$10 MM

100 Square miles of true
CA/CP PSTM re-processing
≈ **\$150,000**

100 Square miles of tape
copy charges
≈ **\$20,000 - \$40,000**

DON'T YOU OWE IT

to **YOURSELF** and
YOUR COMPANY

to have the best image
before drilling?

OUR SERVICES

- Onshore and OBC Controlled Amplitude & Controlled Phase (CA/CP) Processing
- Surface Consistent Processing
- Seamless Multi-Survey Merge
- Gather Conditioning with AVO Attributes
- Inversion and Fluid / Lithology Prediction

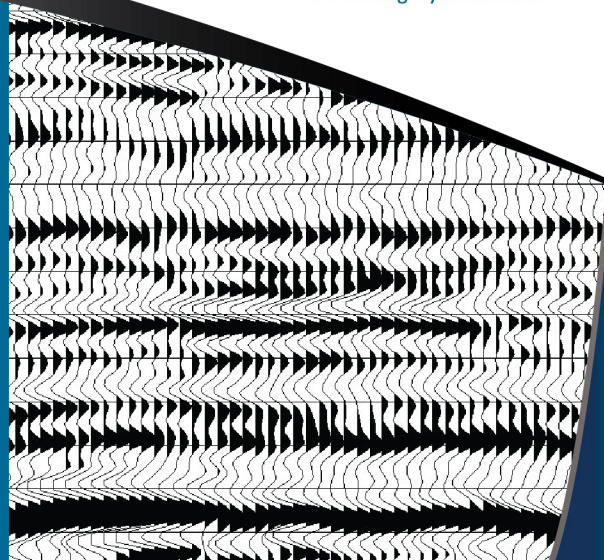
SENIOR PROCESSING GEOPHYSICISTS

- Daniela Smoleanu / Partner
- Karen Chevis-McCoy / Partner
- Steven Larson / Partner


(713)357-4706
www.integrityseismic.com

Zane Swope
President - Partner
(713)357-4706 Ext 7006
(281)635-9162 (Cell)
zswope@integrityseismic.com

James Bloomquist
Business Development Manager
(713)357-4706 Ext 7008
(281)660-9695 (Cell)
Jbloomquist@integrityseismic.com



North American Gas



- Sufficient shale supply for \pm 50 years
- 2015-2020 LNG exports (\sim 5 BCFD of 77 BCFD total market) will not fix oversupply situation
- \$2.75 - \$3.75 HH likely long term price

SPONSORS

CHARGER EXPLORATION

Michael L. Jones
President/Geologist

Onshore Gulf Coast Prospect Generation and Consulting

1001 McKinney Street, Suite 801 Houston, TX 77002
Ofc: 713.654.0080 Cell: 713.398.3091
Email: mjones@chargerexploration.com
www.chargerexploration.com

Serving Corpus Christi for over 20 years

 **mail express**
501 S. Tanchua St.
Corpus Christi, TX 78401

- We process 1st class mail with a direct discount to you
- No meter procedure change except for the amount you meter your envelopes

CALL 888-4332 for details - Ask for Anne

That old gas kick could be your next discovery!

Characterization of Unconventional Reservoirs

Traditional methods of core analysis cannot yield acceptable results when applied to unconventional reservoirs such as gas shales, tight gas sands, coals and thin bed formations.

Production controls on these reservoirs are not limited to hydrocarbons in place, permeability and porosity. Pay identification requires an understanding of complex lithologies and exotic mineralogies.

Only Core Lab offers the comprehensive range of unique technologies required to optimize your unconventional reservoirs.

Geological Petrophysical Geomechanical Geochemical



To learn more about our unique unconventional reservoir evaluation services contact Core Lab.
(713) 328-2121 or (361) 289-5457 psinfo@corelab.com

© 2005 Core Laboratories. All rights reserved.

North American NGL's

RIVER
STONE

- Similar situation to gas
- Likely long term oversupply
- Expect prices to (roughly) track gas

SPONSORS



Since 1905

Royal Exploration Company, Inc.

Bank of America

500 N. Shoreline Blvd. Suite 807 N
Corpus Christi, Texas 78471-1008

Alan Costello - Geologist Robert Rice - Geologist
Matt Hammer - Exploration Manager

Telephone: 361-888-4792 Fax: 361-888-8190

www.**GeoSteering**.com

281-573-0500
info@geosteering.com

Free introductory consultation
with modeling:
let us demonstrate whether
images or propagation resistivity
could add value to your well.

Personnel with degrees & 20+ years of oilfield experience

Proprietary software

TST interpretation for GR only jobs

**Image displays / interpretation for jobs with azimuthal GR,
resistivity or density**

**Resistivity modelling / interpretation for jobs with LWD
propagation resistivity**

Real-time (always)

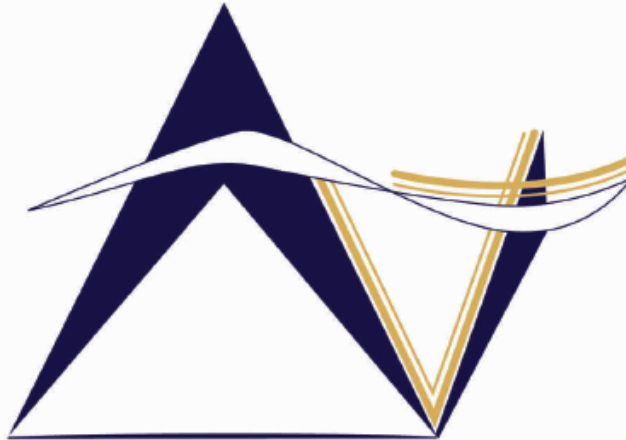


Crude Oil

RIVER
STONE

- Totally different macro picture – not an island commodity
- Current global demand – 93 million BPD; growing 1 million BPD/year
- At \$60 WTI, it's uneconomic to develop new oil almost anywhere in the world except in the Middle East
- US is the only significant place where global supply is growing

SPONSORS



VirTex Operating Company, Inc.

*615 North Upper Broadway, Suite 525, Corpus Christi, Texas 78477
(361) 882-3046*

SEI®

Seismic Exchange, Inc.

Strategic Speculative Surveys
Geophysical Data Marketing & Management

YOUR
Full Service
National
Seismic Data
Marketing Firm

Corpus Marketing Contact:
Beau Patrick

Corpus Office
361.884.2936

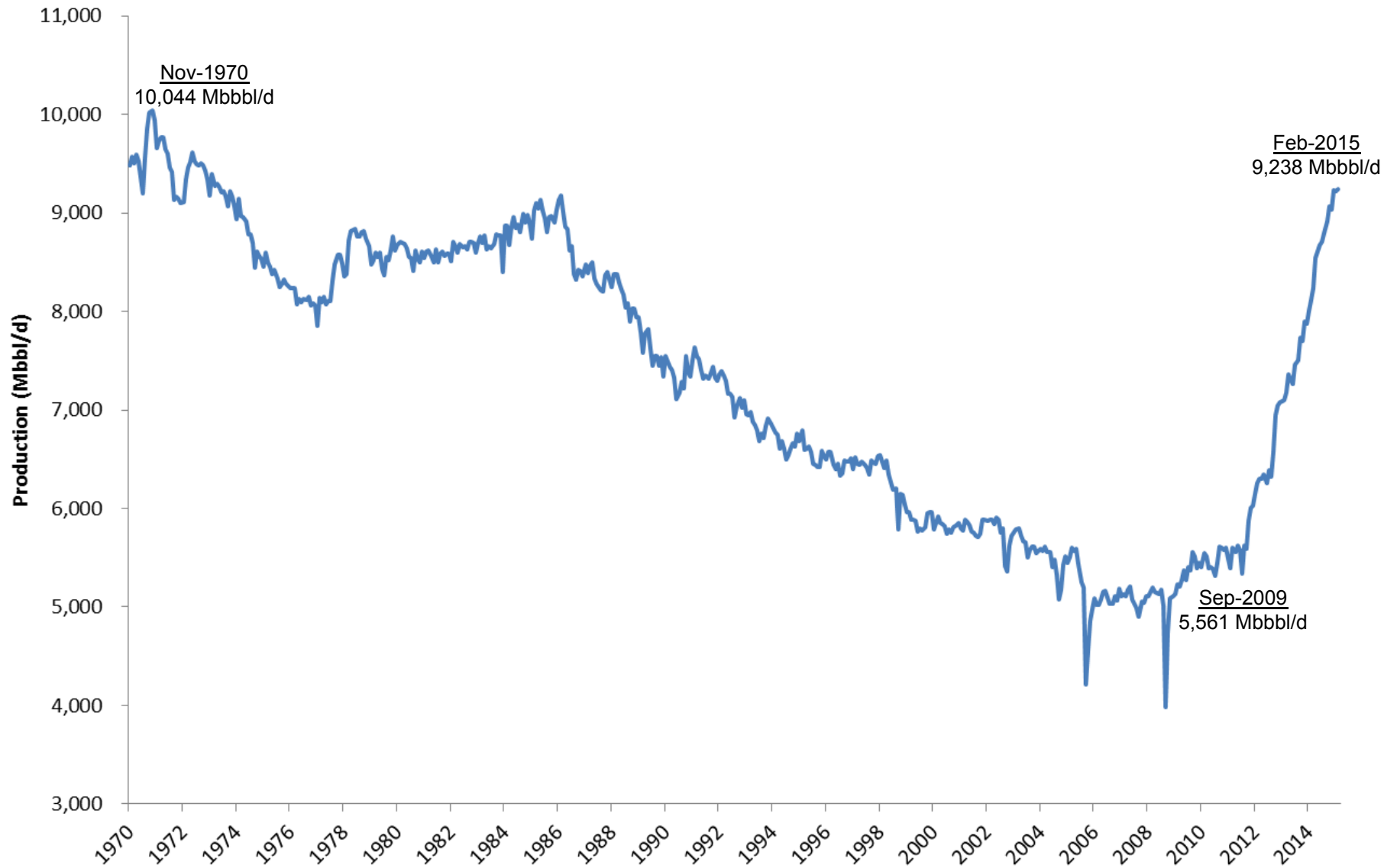
CORPUS CHRISTI DALLAS DENVER HOUSTON NEW ORLEANS TULSA

11050 Capital Park Dr., Houston, Texas 77041 832.590.5100

www.seismicexchange.com

U.S. Crude Production by Month (Mbbbl/d)

RIVER
STONE



Source: U.S. Energy Information Agency

SPONSORS

STALKER ENERGY, L.P.

Austin Office:

1717 W. 6th Street, Ste 230

Austin, Texas 78703

512.457.8711

Contact: Bill Walker, Jr.

bwalker@stalkerenergy.com

Houston Office:

2001 Kirby Drive, Suite 950

Houston, Texas 77019

713.522.2733

Contact: Todd Sinex

tsinex@stalkerenergy.com

www.stalkerenergy.com



LMP PETROLEUM, INC.

EXPLORING SOUTH TEXAS

615 N. Upper Broadway
Suite 1770

Wells Fargo Bank Building
Corpus Christi, Texas 78401-0773

361-883-0923

Fax: 361-883-7102

E-mail: geology@lmpexploration.com

WELLSITE GEOSCIENCE SERVICES



**When time is money,
Wellsite Geoscience is
money well spent.**

Whether you're exploring a basin, producing a well or completing a shale play, time is money. That's why Weatherford Laboratories brings a suite of formation evaluation technologies right to the wellsite. Utilizing mud gas and cuttings, these technologies provide detailed data on gas composition, organic richness, mineralogy and chemostratigraphy in near real time. As a result, operators now have an invaluable tool to assist with sweet spot identification, wellbore positioning, completion design and hydraulic fracturing. We call it Science At the Wellsite. You'll call it money well spent.

SCIENCE AT THE WELLSITE™

www.weatherfordlabs.com

Formation Evaluation | Well Construction | Completion | Production

©2013 Weatherford. All rights reserved.



What will Happen to US Production Growth?



- At \$60 WTI, the only significant domestic oil plays that are economic on a full cycle basis are parts of the Eagle Ford and Delaware Basin
- Domestic production has been growing at a 1.2 million BPD YOY rate for the past year. Within 4 months, this should drop to 0.6 million BPD.
- By YE15 domestic YOY growth will be zero

By YE15

RIVER
STONE

- Global demand growing at 1+ million BPD
- US oil growth ~ 0
- Rest of world oil growth ~ 0
- Likely upward oil price pressure

Other Global Factors



- Saudi Arabia – could increase production by 0.5 million BPD to further punish US shale industry
- Iran – If nuclear agreement reached – production could increase by 0.7 million BPD after 1 year
- US – Production will grow again if prices >\$80
- Any of these would tend to lower prices
- Likely no shale oil outside North America for 5 – 10 years

Price Prediction

RIVER
STONE

- Prices will likely rise in 2H15
- Stable price is likely \$75-\$80
- Long Term \$90-\$100 prices unlikely
- Long Term \$50 price unlikely

Effect of Shale Revolution on US Economy

- Biggest boost to overall economy in ± 40 years
 - Reindustrialization of parts of US
- Long term domestic natural gas prices will be $\sim 1/3$ of similar prices in Europe or Asia
 - Major uplift for chemicals industry and others
- US will be a long term major oil producer
 - Foreign policy impact
 - Major trade deficit benefits

Corpus Christi Geological Society Papers available for purchase at the Texas Bureau of Economic Geology

Note: Publication codes are hyperlinked to their online listing in [The Bureau Store](http://begstore.beg.utexas.edu/store/) (<http://begstore.beg.utexas.edu/store/>).

Cretaceous-Wilcox-Frio Symposia, D. B. Clutterbuck, Editor, 41 p., 1962.
[CCGS 002S](#) \$15.00

Type Logs of South Texas Fields, Vol. I, Frio Trend. Compiled by Don Kling. Includes 134 fields. 158 p., 1972. Ring binder.
[CCGS 015TL](#) \$25.00

Type Logs of South Texas Fields, Vol. II, Wilcox (Eocene) Trend. Compiled by M. A. Wolbrink. 98 p., 1979. Ring binder.
[CCGS 016TL](#) \$25.00

Field Trip Guidebooks

South Texas Uranium. J. L. Cowdrey, Editor. 62 p., 1968.
[CCGS 102G](#) \$12.00

Hidalgo Canyon and La Popa Valley, Nuevo Leon, Mexico. CCGS 1970 Spring Field Conference. 78 p., 1970.
[CCGS 103G](#) \$8.00

Padre Island National Seashore Field Guide. R. N. Tench and W. D. Hodgson, Editors. 61 p., 1972.
[CCGS 104G](#) \$5.00

Triple Energy Field Trip, Uranium, Coal, Gas—Duval, Webb & Zapata Counties, Texas. George Faga, Editor. 24 p., 1975.
[CCGS 105G](#) \$10.00

Minas de Golondrinas and Minas Rancherías, Mexico. Robert Manson and Barbara Beynon, Editors. 48 p. plus illus., 1978.
[CCGS 106G](#) \$15.00

Portrero Garcia and Huasteca Canyon, Northeastern Mexico. Barbara Beynon and J. L. Russell, Editors. 46 p., 1979.
[CCGS 107G](#) \$15.00

Modern Depositional Environments of Sands in South Texas. C. E. Stelling and J. L. Russell, Editors. 64 p., 1981.
[CCGS 108G](#) \$15.00

Geology of Peregrina & Novillo Canyons, Ciudad Victoria, Mexico, J. L. Russell, Ed., 23 p. plus geologic map and cross section, 1981.
[CCGS 109G](#) \$10.00

Geology of the Llano Uplift, Central Texas, and Geological Features in the Uvalde Area. Corpus Christi Geological Society Annual Spring Field Conference, May 7-9, 1982. Various paginated. 115 p., 53 p.
[CCGS 110G](#) \$15.00

Structure and Mesozoic Stratigraphy of Northeast Mexico, prepared by numerous authors, variously paginated. 76 p., 38 p., 1984.
[CCGS 111G](#) \$15.00

Geology of the Big Bend National Park, Texas, by C. A. Berkebille. 26 p., 1984.
[CCGS 112G](#) \$12.00

GEO LINK POST

<http://www.lib.utexas.edu/books/landsapes/index.php> Free service. Rare, fragile, hard-to-find, public domain documents covering various topics about the landscape of Texas. Includes the Texas Geological Survey from 1887 until 1894.

USGS TAPESTRY OF TIME AND TERRAIN <http://tapestry.usgs.gov> The CCGS is donating to all of the 5th and 6th grade schools in the Coastal Bend. Check it out--it is a spectacular map. You might want to frame one for your own office. The one in my office has glass and a metal frame, and It cost \$400 and it does not look as good as the ones we are giving to the schools.

FREE TEXAS TOPOS'S <http://www.tnris.state.tx.us/digital.htm> these are TIFF files from your state government that can be downloaded and printed. You can ad them to SMT by converting them first in Globalmapper. Other digital data as well.

FREE NATIONAL TOPO'S [http://store.usgs.gov/b2c_usgs/b2c/start/\(xcm=r3standardpitrex_prd\)/.do](http://store.usgs.gov/b2c_usgs/b2c/start/(xcm=r3standardpitrex_prd)/.do) go to this webpage and look on the extreme right side to the box titled TOPO MAPS DOWNLOAD TOPO MAPS FREE.

<http://www.geographynetwork.com/> Go here and try their top 5 map services. My favorite is 'USGS Elevation Date.' Zoom in on your favorite places and see great shaded relief images. One of my favorites is the Great Sand Dunes National Park in south central Colorado. Nice Dunes.

<http://antwrp.gsfc.nasa.gov/apod/asropix.html> Astronomy picture of the day--awesome. I click this page everyday.

<http://www.spacimaging.com/gallery/ioweek/iow.htm> Amazing satellite images. Check out the gallery.

<http://www.ngdc.noaa.gov/seg/topo/globegal.shtml> More great maps to share with kids and students.

www.ccgeo.org Don't forget we have our own we page.

<http://terra.nasa.gov/gallery/> Great satellite images of Earth.

www.ermaper.com They have a great free downloadable viewer for TIFF and other graphic files called ER Viewer.

<http://terrasrver.com> Go here to download free aerial photo images that can be plotted under your digital land and well data. Images down to 1 meter resolution, searchable by Lat Long coordinate. Useful for resolving well location questions.

TYPE LOGS OF SOUTH TEXAS FIELDS by Corpus Christi Geological Society

NEW (2009-2010)TYPE LOGS IN RED; ***2011;**

lost now found

ARANSAS COUNTY

Aransas Pass/McCampbell Deep
Bartell Pass
Blackjack
Burgentine Lake
Copano Bay, South
Estes Cove
Fulton Beach
Goose Island
Half Moon Reef
Nine Mile Point
Rockport, West
St. Charles
Tally Island
Tract 831-G.O.M. (offshore)
Virginia

BEE COUNTY

Caesar
Mosca
Nomanna
Orangedale(2)
Ray-Wilcox
San Domingo

Tulsita Wilcox

Strauch_Wilcox

BROOKS COUNTY

Ann Mag
Boedecker
Cage Ranch
Encintas
ERF
Gyp Hill

Gyp Hill West

Loma Blanca
Mariposa
Mills Bennett
Pita
Tio Ayola
Tres Encinos

CALHOUN COUNTY

Appling
Coloma Creek, North
Heyser
Lavaca Bay
Long Mott
Magnolia Beach
Mosquito Point
Olivia
Panther Reef
Powderhorn
Seadrift, N.W.
Steamboat Pass
Webb Point
S.E. Zoller

CAMERON COUNTY

Holly Beach
Luttes
San Martin (2)
Three Islands, East

Vista Del Mar

COLORADO COUNTY

E. Ramsey
Graceland N. Fault Bik
Graceland S. Fault Bik

DEWITT COUNTY

Anna Barre
Cook
*******Nordheim**
Smith Creek
Warmley

Yorktown, South

DUVAL COUNTY

DCR-49
Four Seasons
Good Friday
Hagist Ranch
Herbst
Loma Novia
Petrox

Seven Sisters
Seventy Six, South
Starr Bright, West

GOLIAD COUNTY

Berclair
North Blanca
Bombs
Boyce
Cabeza Creek, South
Goliad, West
St Armo

HIDALGO COUNTY

Alamo/Donna
Donna
Edinburg, West
Flores-Jeffress
Foy
Hidalgo

LA Blanca

McAllen& Pharr
McAllen Ranch
Mercedes
Monte Christo, North
Penitas
San Fordyce
San Carlos
San Salvador
S. Santallana
Shary
Tabasco
Weslaco, North
Weslaco, South

JACKSON COUNTY

Carancahua Creek
Francitas
Ganado & Ganado Deep
LaWard, North
Little Kentucky

Maurbro

StewartSwan Lake

Swan Lake, East
Texana, North
West Ranch

JIM HOGG COUNTY

Chaparosa
Thompsonville,N.E.

JIM WELLS COUNTY

Freebom
Hoelsher
Palito Blanco

Wade City

KARNES COUNTY

Burnell
Coy City
Person
Runge

KENEDY COUNTY

Candelaria
Julian
Julian, North
Laguna Madre

Rita

Stillman

KLEBERG COUNTY

Alazan
Alazan, North
Big Caesar
Borregos
Chevron (offshore)
Laguna Larga
Seeligson
Sprint (offshore)

LA SALLE COUNTY

*****Pearsall**

LAVACA COUNTY

Hallettsville
Hope
Southwest Speaks
Southwest Speaks Deep

LIVE OAK COUNTY

Atkinson
Braslau
Chapa
Clayton
Dunn
Harris
Houdman
Kittie West-Salt Creek
Lucille
Sierra Vista
Tom Lyne
White Creek
White Creek, East

MATAGORDA COUNTY

Collegeport

MCMULLEN COUNTY

Arnold-Weldon

Brazil
Devil's Waterhole
Hostetter
Hostetter, North

NUECES COUNTY

Agua Dulce (3)
Arnold-David
Arnold-David, North
Baldwin Deep
Calallen
Chapman Ranch
Corpus Christi, N.W.
Corpus Christi West C.C.
Encinal Channel
Flour Bluff/Flour Bluff, East
GOM St 9045(offshore)
Indian Point
Mustang Island
Mustang Island, West
Mustang Island St.
889S(offshore)
Nueces Bay/Nueces Bay
West

Perro Rojo

Pita Island

Ramada
Redfish Bay
Riverside
Riverside, South
Saxet
Shield
Stedman Island

Turkey Creek

REFUGIO COUNTY

Bonnieview/Packery Flats
Greta
La Rosa
Lake Pasture
Refugio, New
Tom O'Connor

SAN PATRICIO COUNTY

Angelita East
Commonwealth
Encino
Enos Cooper
Geronimo
Harvey
Hiberia
Hodges
Mathis, East
McC Campbell Deep/Aransas Pass
Midway
Midway, North
Odem

Plymouth

Portilla (2)

Taft
Taft, East
White Point, East

STARR COUNTY

El Tanque
Garcia
Hinde
La Reforma, S.W.

Lyda

Ricaby
Rincon
Rincon, North
Ross
San Roman
Sun
Yturria

VICTORIA COUNTY

Helen Gohike, S.W.
Keeran, North
Marcado Creek
McFaddin
Meyersville
Placedo

WEBB COUNTY

Aquilares/Glen Martin
Big Cowboy
Bruni, S.E.
Cabezon
Carr Lobo
Davis
Hirsch
Juanita
Las Tiendas
Nicholson
O'Hem
Olmitos
Tom Walsh

WHARTON COUNTY

Black Owl

WILLACY COUNTY

Chile Vieja

La Sal Vieja
Paso Real
Tenerias
Willamar

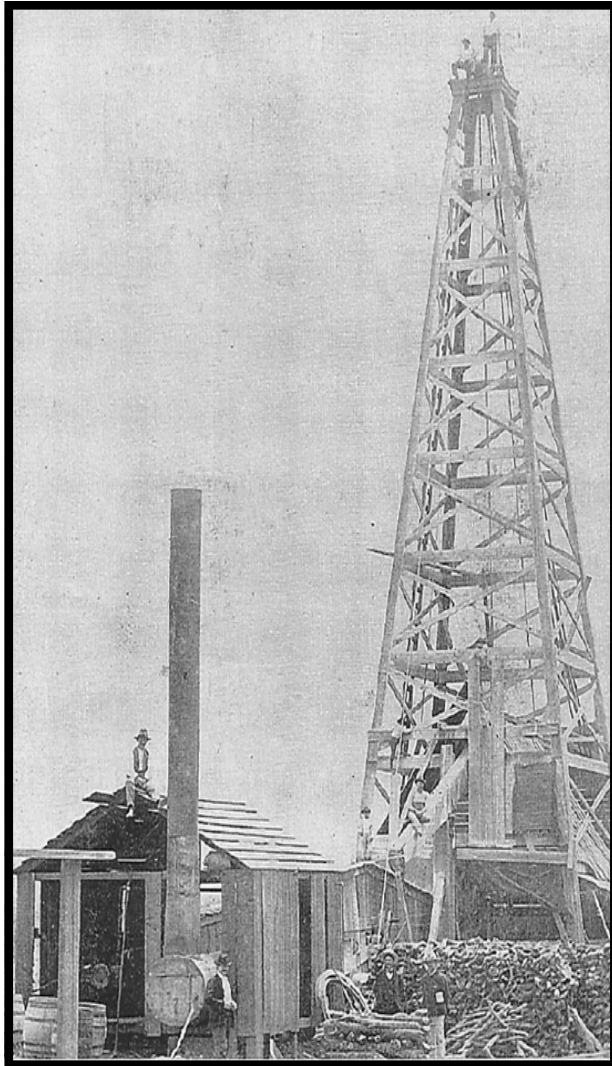
ZAPATA COUNTY

Benavides
Davis, South
Jennings/Jennings, West
Lopeno
M&F
Pok-A-Dot

ZAVALA COUNTY

El Bano

Call Coastal Bend Geological Library, Maxine: 361-883-2736
1 log -- \$10 each, 5-10 logs \$9 each and 10 + logs \$8.00 each – plus postage



Corpus Christi Geological Society
C/O Javelina Press
P. O. Box 60181
Corpus Christi, TX 78466

Order Form

Mail order form for Wooden rigs-Iron Men. The price is \$75 per copy, which includes sales tax, handling, and postage

Name _____

Address _____

City, State, Zip _____

No. of books _____ Amount enclosed _____

Send to Corpus Christi Geological Society Book Orders

P. O. Box 60181

Corpus Christi, TX. 78466 Tax exempt# if applicable _____

Wooden Rigs—Iron Men

The Story of Oil & Gas in South
Texas

By Bill & Marjorie K. Walraven

Published by the
Corpus Christi Geological Society

OIL MEN
TALES FROM THE SOUTH TEXAS OIL PATCH
DVD
MEMBER PRICE \$25
NON-MEMBER \$30



To Order DVD
Sebastian Wiedmann
swiedmann.geo@gmail.com
If mailed add \$5.00

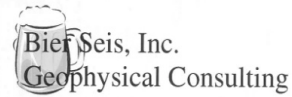


Kyle Barker
Geologist / Geosteering Manager
812.756.2216
kbarker@geotechloggingservices.com

P.O. Box 305 Office: 512.308.8200
Red Rock, TX 78662 Fax: 830.839.4832
www.geotechloggingservices.com

david becker
geologist
o: (361) 884-3613
f: (888) 869-2011
600 leopard st. ste 706
corpus christi, tx 78473
dkbecker1137@sbcglobal.net

David Becker
exploration
geologist



David Biersner, President
19446 Arrowood Place
Garden Ridge, Tx 78266
Cell: 281.744.7457
E-Mail: bierseis@yahoo.com

Field Quality Control
Program Management
Permit Management
Seismic Line Clearing
Supervision



Dawn S. Bissell
Geoscientist

Advent Geoscience Consulting, LLC

Phone: 361-960-2151 253 Circle Drive
Fax: 961-854-2604 Corpus Christi, TX 78411
Email: bisseth@swbell.net Home: 361-854-2635



James Bloomquist
Business Development Manager
jbloomquist@integrityseismic.com

Office 713-357-4706 ext7008 16420 Park Ten Place
Cell 281-660-9695 Suite 240
Fax 713-357-4709 Houston, TX 77084



Elizabeth Chapman
Business development/marketing

11777 Katy Freeway, Ste 570 Houston, TX 77079
office: 281.977.7432 ext 109 fax: 281.829.1788
cell: 713.817.4232 email: elizabeth@flamingoseismic.com

www.flamingoseismic.com



TRAVIS CLARK
GEOLOGIST

DYNAMIC PRODUCTION, INC.

5070 MARK IV PARKWAY
FORT WORTH, TEXAS 76106
PHONE 817.838.1810
FAX 817.838.1824
EMAIL travis.clark@dynprod.net

James L. Claughton
CONSULTING GEOLOGIST

Office | 361-887-2991 615 North Upper Broadway
Fax | 361-883-4790 Suite 1935
Cell | 361-960-2014 Corpus Christi, Texas
clausoie@sbcglobal.net 78401-0779



JEFF COBBS
President - Geologist

615 Leopard St., Suite 336 Office (361) 883-2911
Corpus Christi, Texas 78401-0610
jc@tlspc.com Cell (361) 960-0530

Jim Collins
Geoscientist



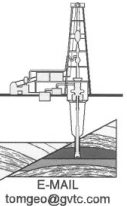
361.537.4034
jim@gulfcoastgas.com



Frank G. Cornish
Consulting Geologist
615 N. Upper Broadway, Suite 1770
Corpus Christi, TX 78401
frank.cornish@gmail.com

361-693-0923 (o)
1-800-510-6810 (f)
361-563-9184 (m)

TOM DAVIDSON
GEOLOGIST



28550 IH-10 WEST SUITE #4
BOERNE, TEXAS 78006

BUS: (210) 844-8963
RES: (830) 981-5883
FAX: (830) 981-5567
CEL: (210) 844-8963

E-MAIL
tomgeo@gvtc.com



Sara Davis
Director of Marketing & Business Development

4805 Westway Park Blvd., Houston, TX 77041
p: 832.554.4301 d: 832.554.4314 c: 713.256.8737
sdavis@seimaxtech.com



FROST BANK PLAZA
802 N. CARANCAHUA, SUITE 1000
CORPUS CHRISTI, TEXAS 78470

LEIGHTON L. DEVINE
EXPLORATION GEOLOGIST

OFFICE: (361) 884-8824
FAX: (361) 884-9623
MOBILE: (361) 510-8872
ldevine@suemaur.com

ONE APEX ENERGY, INC.

CHRISTIAN DOHSE
Consulting Geologist



(361) 877-3431
CHRISTIANDOHSE@GMAIL.COM
CORPUS CHRISTI, TX

Tommy Dubois
Geologist

2627 CR 312
Yoakum, Texas 77995

361-215-0223 tvdubois@yahoo.com



MATTHEW FRANEY
Geologist

600 Leopard
Suite 904
Corpus Christi, TX 78401

Email: mfraney57@att.net Phone (361) 888-6327

Enrique (Rick) Garza
Operation Supervisor
US Land



Geoscience
Solutions

Rick.Garza@GlobalGeophysical.com
DIRECT +1 713-808-7428
MOBILE +1 361-701-6480
FAX +1 713-808-7528
13927 South Cassman Road
Missouri City, Texas 77489 USA
www.GlobalGeophysical.com

GISLER BROTHERS LOGGING CO., INC.

P.O. BOX 485
106 E. MAIN

RUNGE, TX 78151



Wes Gisler
Bus: (830) 239-4651
Mobile (361) 676-1369

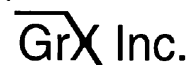
wes@gislerbrotherslogging.com



RAY GOVETT, Ph. D.
CONSULTING GEOLOGIST
361-855-0134

Robert Graham
President
grexploration@gmail.com

Phone 361-882-7681
Fax 361-882-7685
Cell 361-774-3635



Exploratory Prospects & Production Development

Mail:
P. O. Box 1843
Corpus Christi, Texas
78403-1843

Office:
606 N. Carancahua, Ste. 610
Corpus Christi, Texas
78401-0634



HART EXPLORATION, LLC.

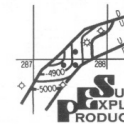
RICK HART
Geologist / Owner

P.O. Box 729
Coldspring, Texas 77331
Cell: 512-626-3053
Email: hartexploration@aol.com

RIVIERA EXPLORATION, LLC

H. TONY HAUGLUM
President

600 LEOPARD ST.
SUITE 1704
CORPUS CHRISTI
TEXAS 78401
PHONE 361.884.1811
FAX 361.884.8071
E-MAIL THAUGLUM@SWBELL.NET



BRENT F. HOPKINS
PRESIDENT AND CEO
GEOLOGIST

FROST BANK PLAZA
802 N. CARANCAHUA, SUITE 1000
CORPUS CHRISTI, TEXAS 78401-0015

OFFICE: (361) 884-8824
FAX: (361) 884-9923
RES: (361) 643-8373
CELL: (361) 215-4855
Email: brenth@suemaur.com

James R. Jones
Geologist

7434 Long S Drive
Corpus Christi, TX 78414
361-779-0537
jrjones5426@aol.com



EOG Resources, Inc.
539 N. Carancahua
Suite 900
Corpus Christi, TX 78401-0908
Direct: (361) 887-2691

Randy Lambert
Geological Advisor

Fax: (361) 844-1548
randy_lambert@eogresources.com



Louis R. Lambiotte
Geologist

LMP Petroleum, Inc.
615 N. Upper Broadway, Suite 1770
Corpus Christi, TX 78477
Tel: (361) 883-0923
Fax: (361) 883-7102
E-mail: geology@LMPexploration.com



PATRICK J. McCULLOUGH [President]
patrickm@emeraldbayexp.com

311 Saratoga Boulevard Corpus Christi, Texas 78417
361.852.6195 [e] 361.852.6676 [f] 361.876.7881 [c]

YOUR CARD COULD BE HERE!!!
\$30 FOR 10 ISSUES
AD PRICES PRO-RATED
EMAIL ROBBY AT
ROBERT.STERETT@GMAIL.COM

CURTIS R. MAYO
GEOLOGICAL CONSULTANT

Reserve Analysis Prospect Evaluation
Expert Witness Prospect Generation

Fredericksburg, Texas 78624
Office: 830.992.2938 Cell: 830.765.0628 E-Mail: cmayo@cresec.net



Armando Medina
Owner / Geologist

8610 N. New Braunfels #703 • San Antonio, TX 78217
(210) 538-2170 • amedina@valorexploration.com



J. Mark Miller
President

Phone (361) 883-7700
Fax (361) 883-7701
mark@millersmithgas.com
545 N. Upper Broadway
Suite 400
Corpus Christi, Texas 78476

Wellhead Gas Marketing



Dennis Moore
Formation Evaluation
Wireline - Southern GeoMarket

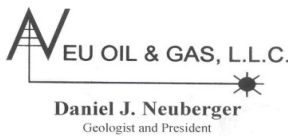
9333 HWY 44
Corpus Christi, TX 78406
Direct: 361-692-3640
Fax: 361-692-3553
Mobile: 361-816-5144
Email: dennis.moore@bakerhughes.com

www.bakerhughes.com

Mailing Address
615 Leopard, Ste. 640
Corpus Christi, Texas 78401-0641
361.882.7888 phone
361.882.7889 fax
361.946.2581 mobile
Contact Address
1701 Southwest Parkway, Ste. 109
College Station, Texas 77840
866.946.2581 phone
866.946.2580 fax
pmueller@melexp.com
www.melexp.com



J. Paul Mueller, Jr.
President



Daniel J. Neuberger
Geologist and President

Austin Office:
712 Winsome Trail
West Lake Hills, Texas 78746

Office (361) 548-7723
Home (512) 306-1223
dan@neuoilandgas.com

Patrick Nye
President
patrick@nyexp.us

Office: (361) 452-1435
Cell: (361) 658-1089
Res: (361) 238-2146



802 N. Carancahua, Suite 1840
Frost Bank Plaza
Corpus Christi, TX 78401
www.nyexp.us



BRIAN E. O'BRIEN

510 Bering Drive
Suite 600
Houston, Texas 77057

Main: 713-783-4883
Fax: 713-783-3039
Res: 713-784-7911
Cell: 713-899-5164
E-mail: bobrien@saxetpetroleum.com



Ken Orlaska
Account Manager

281-497-8440
Direct: 281-249-5051
Fax: 281-558-8096
Cell: 832-455-1818
e-mail: korlaska@geotrace.com
12141 Wickchester Lane, Suite 2000
Houston, Texas 77079
www.geotrace.com



**Herradura
Petroleum, Inc.**
JEFF OSBORN
Geologist

711 N. Carancahua, Ste. 1750
Corpus Christi, Texas 78475
e-mail: jef@herradurapetroleum.com

Office: 361-884-6886
Fax: 361-884-9102
Cell: 361-537-2349

Richard M. Parker
Consulting Geologist

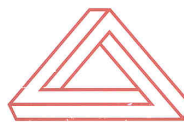
Registered State of Texas Board of Professional Geoscientists
License # 6056

12802 Max Rd.
Brookside Village, Texas 77581
Email: rparker@sbcglobal.net

713-724-4380 Cell 1
713-206-3158 Cell 2
281-412-0745 Home

Lae Prejean
Business Development Manager

800.256.1147
225.247.9038
www.stratagraph.com
lprejean@stratagraph.com



P.O. Box 53848
Lafayette, LA 70505





Beth Priday
Senior Geologist

VirTex Operating Co., Inc.
615 North Upper Broadway
Suite 525, WF168
Corpus Christi, Texas 78477
Bus (361) 882-3046
Fax (361) 882-7427

Mobile: (361)443-5593 • E-mail: bpriday@virtexoperating.com

Minerals Exploration and Mining
Uranium In Situ Leach

Richard M. Rathbun, Jr.
Certified Professional Geologist 9544 / AIPG
Texas Board of Prof. Geoscientists / Lic. No. 4679

921 Barracuda Pl.
Corpus Christi, Texas 78411

(361) 903-8207
rathbunassoc@msn.com



Barry J. Rava
President

Mobile: 281-235-7507
Office: 713-621-7282

barry@icarusog.com
www.icarusog.com

P.O. Box 820253
Houston, TX 77282-0253

Deliveries
1710 S. Dairy Ashford Rd., Ste. 202
Houston, TX 77077



Wireline Services

Weatherford International Ltd.
401 E. Sonterra Blvd., Suite 1
San Antonio, Texas 78258
USA

Sam Roach
US Gulf Coast Wireline Sales

+1 210 930 7588 Direct
+1 210 930 7610 Fax
+1 210 241 2463 Mobile

sam.roach@weatherford.com
www.weatherford.com

First Rock, Inc.

RGR Production First Rock I, LLC

Gregg Robertson

Main Office:
600 Leopard, Suite 1800
Corpus Christi, TX 78401
361-884-0791

San Antonio:
7979 Broadway, Ste 207
San Antonio, TX 78209
210-822-2551

361-884-0863 Facsimile
361-993-6357 Home
361-215-5559 Cell
210-260-0300 Mobile

firstrockinc@msn.com



Alvin Rowbatham
Sales, Gulf of Mexico

Main +1 713 789 7250
Direct +1 281 781 1065
Fax +1 713 789 7201
Mobile +1 832 372 2366
alvin.rowbatham@iongeo.com

2105 CityWest Blvd. | Suite 900
Houston, TX 77042-2839 USA

TOM SELMAN
selmanlog.com
tselman@selmanlog.com

Ofc. (432) 563-0084
(800) 578-1006
Cell (432) 288-2259



GEOLOGICAL CONSULTING / SURFACE LOGGING SERVICES

P.O. Box 61150 4833 Saratoga #624 P.O. Box 2993
Midland, TX 79711 Corpus Christi, TX 78413 Rock Springs, WY 82902



Petrophysics, Inc.
Velocity Surveys • Synthetics • Sonic Log Data

Joe H. Smith
President

P.O. Box 863323
Plano, Texas 75086

713.560.9733
jsmith@petrophysics.com
www.petrophysics.com

Crossroads Exploration

Gloria D. Sprague
Geologist

Timpon Building
189 N. First Street, Suite 111
Timpon, Texas 75975

Office: (936) 254-3600
Fax: (936) 254-3602
Mobile: (936) 488-9428
E-Mail: gsprague@usawide.net

Charles A. Sternbach, Ph.D
President

Star Creek Energy Company
Oil and Gas Exploration

800 Wilcrest Drive, Suite 230
Houston, Texas 77042
office: 281.679.7333
cell: 632.567.7333
carbodude@gmail.com



www.starcreekenergy.com

YOUR CARD COULD BE HERE!!!
\$30 FOR 10 ISSUES
AD PRICES PRO-RATED
EMAIL ROBBY AT
ROBERT.STERETT@GMAIL.COM

THOMAS W. SWINBANK

CERTIFIED PETROLEUM GEOLOGIST
PRESIDENT

STRIKE OIL & MINERALS CORP.
P.O. Box 1399
GEORGETOWN, TEXAS 78627

PHONE/FAX 512-863-7519
HOME 512-863-7803
CELL 512-876-9565

Dennis A. Taylor
President and Chief Geologist
dennis@amshore.com

Off: (361) 888-4496
Fax: (361) 888-4558
Direct Line: (361) 844-6728
Cell: (972) 672-9916



AMERICAN SHORELINE, INC.

AMSHORE US WIND, LLC
802 N. Carancahua Street, Suite 1350
Corpus Christi, Texas 78401-0019
www.amshore.com

Environmental

Exploration & Production

JEANIE TIMMERMANN
GEOSCIENTIST
TX LICENSE #2289

7214 Everhart #9
Corpus Christi, TX 78413

(361) 991-7451
jimmerrmann74@msn.com



Davis Petroleum Corp.

www.davispetroleumcorp.com

Jim Trevillo
Senior Geoscientist

1330 Post Oak Boulevard
Suite 600
Houston, Texas 77056

Direct: 713.438.6773
Main: 713.826.7765
Fax: 713.826.7775
Cell: 713.826.9392

jtrevillo@davcos.com



10001 Richmond Avenue
Houston, TX 77042-4299
P.O. Box 2469 (77252-2469)
Tel: 713-689-6662
Fax: 713-689-1089
Mobile: 281-615-6827
C.Tutt@slb.com

Chris O. Tutt
Sales Representative
NAM Sales



WILLIAM A. WALKER, JR.
Certified Petroleum Geologist
bwalker@stalkerenergy.com

1717 West 6th Street, Ste. 230 • AUSTIN, TX 78703
2001 Kirby Dr., Ste. 950 • HOUSTON, TX 77019

AUSTIN

512.457.8711
cell: 512.217.5192
fax: 512.457.8717

HOUSTON

713.522.2733
cell: 512.217.5192
fax: 713.522.2879

SEBASTIAN P. WIEDMANN
GEOSCIENTIST

WILSON PLAZA WEST
505 N. CARANCAHUA, SUITE 500
CORPUS CHRISTI, TEXAS 78401

MOBILE (361) 946-4430
swiedmann.geo@gmail.com



Dave Willis
Onshore Sales

Main +1 713 789 7250
Direct +1 281 781 1035
Mobile +1 281 543 6189
Fax +1 713 789 7201
dave.willis@iongeo.com

2105 CityWest Blvd. | Suite 900
Houston, TX 77042-2839 USA



10001 Richmond Avenue
Houston, Texas 77042-4299
P.O. Box 2469 (77252-2469)
Tel: 713-689-2757
Fax: 713-689-1089
Mobile: 281-658-5263
CYanez@slb.com

Charles Yanez
Manager
Shared Value Optimization