

BULLETIN

Corpus Christi Geological Society



and

Coastal Bend Geophysical Society



**September
2016
ISSN 0739 5620**

American Shoreline, Inc.



Specializing in
Oil & Gas Exploration
& Wind Energy

Compliments of

Paul Strunk, Chief Executive Officer
Dennis Taylor, President & Chief Geologist
Jena Nelson, VP Finance & Administration

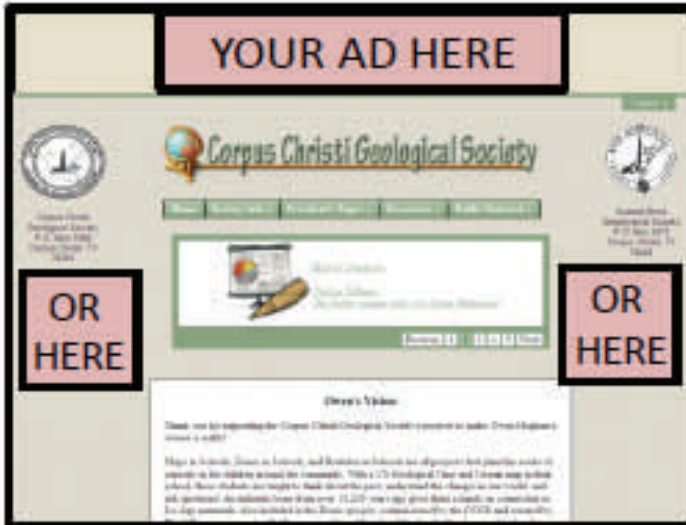
802 N. Carancahua
Frost Bank Plaza, Suite 1250
Corpus Christi, Texas 78401
(361) 888-4496

www.amshore.com

SUPPORT YOUR SOCIETY

Advertise!!!

with the CCGS - CBGS



****NOW OFFERING**
WEBSITE ADS @
WWW.CCGEO.ORG**

**BANNER AD \$2500/YR
SIDE PAGE AD \$1500/YR**

**MONTHLY
BULLETIN
ADS**



1.65" x 2.4" \$75	1.65" x 4.8" \$150
1/8 page 2.2" x 3.6" \$250	CCGS - CBGS Bulletin Ad Space Available: Annual Rates (9 issues + directory)
1/4 page 3.6" x 4.3" \$375	
	Full page 7.2" x 8.6" \$850
	Inside Front or Back Cover \$1000

FOR MORE DETAILS:

EMAIL ADS@CCGEO.ORG OR CALL (361) 887-2691

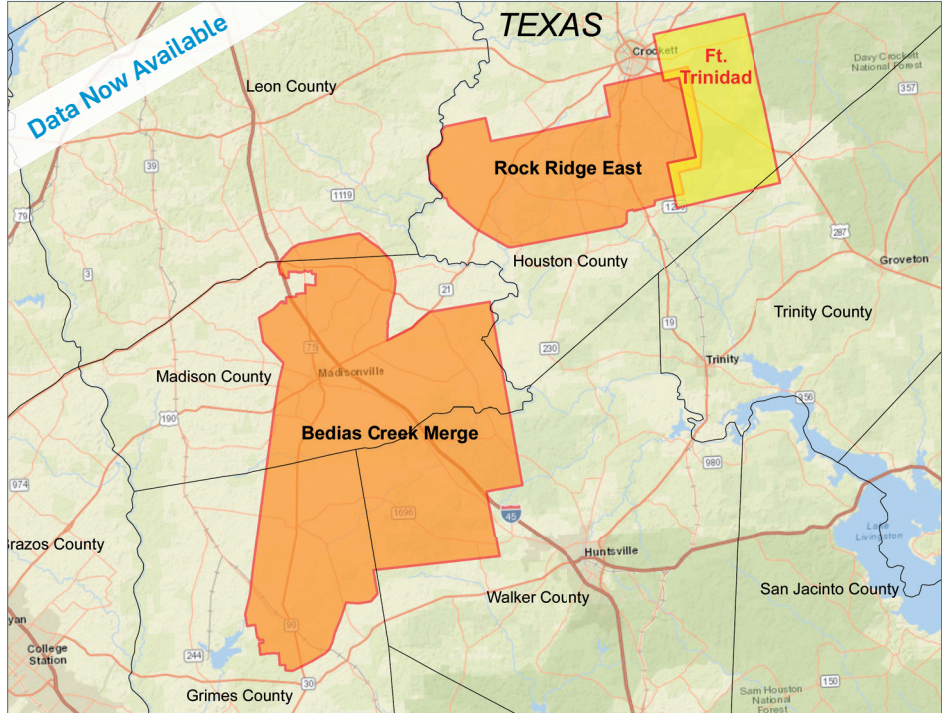
TABLE OF CONTENTS

Officers, Committees and Chairpersons for CCGS/CBGS.....	4 & 5
Calendar of Meetings and Events.....	6 & 7
GCAGS Convention Corporate Sponsorship Opportunities.....	8 & 9
GCAGS Corporate Sponsorships.....	10
CCGS President’s Letter.....	12
Membership Renewal Information.....	13
CCGS Membership Renew Form.....	14
CBGS President’s Letter.....	15 & 16
GCAGS Post-Convention Party & Society Kickoff Bar-B-Q.....	17
Luncheon Meeting Announcement for November 2016.....	20,21,22
CBGS Golf Tournament.....	24
CCGS Scholarship Application Guidelines & Application Form Fall 2016.....	25 & 26
CCGS papers available for purchase at the Bureau of Economic Geology.....	35
Geo Link Post.....	36
Type Logs of South Texas Fields.....	37
Order Oil Men DVD.....	38
Wooden Rigs Iron Men.....	39
Professional Directory.....	40



New Ft. Trinidad 3D Survey Houston and Trinity Counties, TX

YOU'VE ARRIVED



CGG offers the industry's most recent and technologically advanced multi-client data library in the world's key locations.

The best data, the right location, the right time!

Scott Tinley
+1 832 351 8544
scott.tinley@ggg.com

Cheryl Oxsheer
+1 832 351 8463
cheryl.oxsheer@ggg.com





CORPUS CHRISTI GEOLOGICAL SOCIETY
P.O. BOX 1068* C.C. TX. 78403
2016-2017
www.ccgeo.org

OFFICERS

President	Barbara Beynon	361-774-3369	bbeynon77@yahoo.com
President Elect			
Vice President	William Thompson	361-242-3113	William.Thompson@rrc.texas.gov
Secretary	Casey Mibb	361-726-1092	clmibb@yahoo.com
Treasurer	Austin Nye	361-452-1435	austin@nyexp.us
Past President	Mike Lucente	361-883-0923	mikel@lmpexploration.com
Councilor I	Rick Paige	361-884-8824	rickp@suemaur.com
Councilor II	Randy Bissell	361-885-0113	randyb@headington.com

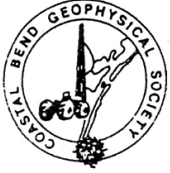
AAPG DELEGATE

EDITORS

Bulletin Editor	Marian Wiedmann	361-855-2542	wiedgulf@gmail.com
Bulletin Tech. Editor			
Web Master	Josh Pollard	361-654-3100	support@interconnect.net

GEOLOGICAL SOCIETY COMMITTEES & CHAIRPERSONS

Advertising/Bus. Cards	Robby Sterett	361-739-5618	robert.sterett@gmail.com
Arrangements	Wes Gisler & Will Graham	830-239-4651 361-885-0110	wes@gislerbrotherslogging.com willg@headingtonenergy.com
Bloodmobile	Mike Lucente	361-883-0923	mikel@lmpexploration.com
Earth Day	Alan Costello	361-888-4792	acostello@royalcctx.com
Continuing Ed.	Stephen Thomas	361-660-8694	stthomas@spnaturalresources.com
Education	Dawn Bissell	361-960-2151	bissells@swbell.net
Scholarship	Dawn Bissell	361-960-2151	bissells@swbell.net
Fishing Tournament	Leighton Devine	361-882-8400	ldevine@suemaur.com
History	Ray Govett	361-855-0134	ray30@hotmail.com
Membership	Dorothy Jordan Randy Bissell	361-885-0110 361-885-0113	dorothyj@headington.com randyb@headington.com
Type Logs	Frank Cornish	361-883-0923	frank.cornish@gmail.com
University Liaison	Casey Mibb Wesley Garcia	361-726-1092	clmibb@yahoo.com



COASTAL BEND GEOPHYSICAL SOCIETY
P.O. BOX 2741*C.C. TX. 78403
2016-2017

OFFICERS

President	Lonnie Blake	361-883-2831	lonnie_blake@eogresources.com
Vice President	Dr. Subbarao Yelisetti	361-593-4894	subbarao.yelisetti@tamuk.edu
Secretary/Treasurer	Matt Hammer	361-888-4792	mhammer@royalcctx.com
Golf Chairman	Fermin Munoz	361-960-1126	fmunoz04@hotmail.com
Scholarship Chairman	Ed Egger	361-947-8400	edegger69@gmail.com
Education	Dr. Robert Schneider		

**Visit the geological
web site at
www.ccgeo.org**

CCGS/CBGS JOINT MEETING SCHEDULE 2016-2017

September 2016							October 2016							November 2016						
S	M	T	W	Th	F	S	S	M	T	W	Th	F	S	S	M	T	W	Th	F	S
				1	2	3							1			1	2	3	4	5
4	5	6	7	8	9	10	2	3	4	5	6	7	8	6	7	8	9	10	11	12
11	12	13	14	15	16	17	9	10	11	12	13	14	15	13	14	15	16	17	18	19
18	19	20	21	22	23	24	16	17	18	19	20	21	22	20	21	22	23	24	25	26
25	26	27	28	29	30		23	24	25	26	27	28	29	27	28	29	30			
							30	31												

GCAGS Convention
"Explore The Future"
 September 18-20, 2016
 Corpus Christi, TX.

GCAGS Post-Convention
 Party & Society Kickoff
 Bar-B-Q
 Thursday, October 13
 5:30 to 8:00 p.m.

11:30am-1:00pm.
 Speaker: Bruce Moriarty,
 Principal Geophysical Advisor,
 Lumina Geophysical
 "Simultaneous Inversion of
 Spectrally-Broadened 3D
 Seismic Data: Case Study for
 the Olmos Unconventional
 Play, South Texas"

December 2016							January 2017							February 2017						
S	M	T	W	Th	F	S	S	M	T	W	Th	F	S	S	M	T	W	Th	F	S
				1	2	3	1	2	3	4	5	6	7			1	2	3	4	
4	5	6	7	8	9	10	8	9	10	11	12	13	14	5	6	7	8	9	10	11
11	12	13	14	15	16	17	15	16	17	18	19	20	21	12	13	14	15	16	17	18
18	19	20	21	22	23	24	22	23	24	25	26	27	28	19	20	21	22	23	24	25
25	26	27	28	29	30	31	29	30	31					26	27	28				

Combined
 November/December for the
 Holidays.

CCGS/CBGS Joint Meeting Schedule 2016-2017

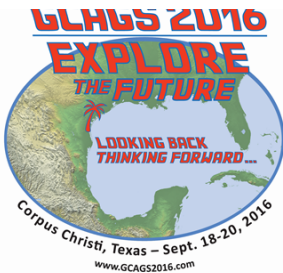
March 2017							April 2017							May 2017						
S	M	T	W	Th	F	S	S	M	T	W	Th	F	S	S	M	T	W	Th	F	S
			1	2	3	4							1	1	2	3	4	5	6	
5	6	7	8	9	10	11	2	3	4	5	6	7	8	7	8	9	10	11	12	13
12	13	14	15	16	17	18	9	10	11	12	13	14	15	14	15	16	17	18	19	20
19	20	21	22	23	24	25	16	17	18	19	20	21	22	21	22	23	24	25	26	27
26	27	28	29	30	31		23	24	25	26	27	28	29	28	29	30	31			
							30													

Combined
February/March for Spring
Break

Calendar of Meetings and Events

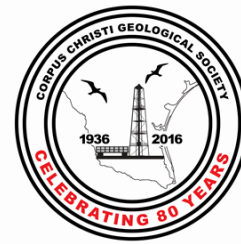
Calendar of Area Monthly Meetings

Corpus Christi Geological/Geophysical Society.....	Third Wed.—11:30a.m.
SIPES Corpus Christi Luncheons.....	Last Tues.—11:30a.m.
South Texas Geological Society Luncheons.....	Second Wed—noon San Antonio
San Antonio Geophysical Society Meetings.....	Fourth Tuesday
Austin Geological Society.....	First Monday
Austin Chapter of SIPES.....	First Thursday
Houston Geological Society Luncheons.....	Last Wednesday
Central Texas Section of Society of Mining, Metallurgy & Exp.....	2 nd Tues every other month in San Antonio



2016 GULF COAST ASSOCIATION
OF GEOLOGICAL SOCIETIES
ANNUAL CONVENTION

CORPUS CHRISTI, TEXAS



The Gulf Coast Association of
Geological Societies and the Gulf
Coast Section of SEPM

Corporate Sponsorship Opportunities

Benefits of sponsorship

- Reinforce your company's name and logo
- Visibility in the exhibit hall
- Stand out from your competitors - give your products and services an edge
- Enhance your standing in the industry
- Earn a profile among young geoscientists - your future workforce

Sponsorship packages - designed to maximize your investment

- **Diamond (D) \$25,000+**
- **Emerald (E) \$15,000+**
- **Sapphire (S) \$5,000+**
- **Topaz (T) \$1,000+**
- **Patron (P) \$500+**

Sponsor an event or product - for even more visibility

All Diamond and Emerald (\$15,000+) sponsors' logos will appear on the convention bag.

A sponsorship package can include your name and brand on one of these events, products, or publications. Choose from among:

- Icebreaker reception - \$15K exclusive
- All-Convention luncheon - \$10K exclusive
- Presidents' Happy Hour - \$10K exclusive
- Field trips & short courses - \$15K exclusive or \$2K each (your choice, 9 available)
- Poster sessions - \$7.5K exclusive
- Technical session rooms - \$5K per room exclusive for duration of convention (6 available)
- Onsite pocket program - \$2K exclusive
- Registration supplies (lanyards, badge holders, etc.) - \$2K exclusive
- Directional signage - \$2K exclusive
- Speaker/Poster Presenter/Judges' gifts - \$1.5K exclusive
- Speakers'/Poster Presenters' breakfasts - \$1K each (2 available)

GCAGS 2016 will prove to be a great opportunity to build your goodwill and brand.
For more information or to make your sponsorship commitment contact:

Corpus Christi, the "Sparkling City by the Sea"
is always a popular GCAGS venue.

What a great way to put your organization forward:

GCAGS - 9000 members, the largest AAPG Section

- 600 - 1000 geoscientists attend
- 900 Professionals representing 450 companies from 14 states and 2 countries attended in 2015

*Package Benefits
(depending on level)*

- Complimentary Registrations (based on sponsorship level: D-5, E-3, S-2, T-1)
 - Logo on banners and signs posted in exhibit hall and elsewhere
 - Recognition at keynote speaker address
 - Pre- and post-show attendee mailing lists
 - Thank-you recognition in the convention program book
 - Company name and link on website
 - Ads in Transactions volume:
 - D—full-page color
 - E—full-page black & white
 - S—half-page black & white
 - T—quarter-page black & white
 - P—logo
- (all ads on Transactions CD can be in color)

Lonnie Blake: Phone 361-876-6614
sponsorships@gcags2016.com

-or-

Dawn Bissell: Phone 361-960-2151
bissells@swbell.net



The Gulf Coast Association of Geological Societies
And the Gulf Coast Section of SEPM
66th Annual GCAGS Convention

September 18-20, 2016

Corpus Christi, Texas

CORPORATE SPONSORSHIP INVoice

Sponsoring Company _____

Amount _____

Contact Person _____

Email _____

Confirm Here How You Want Your Sponsor Name to Appear: _____

If You Have a Logo You Would Like the GCAGS to Use Please Email It To:
gcags2016sponsorship@gmail.com

Mail This Form with Your Check (payable to 'GCAGS 2016') To:

ATTN: GCAGS 2016
Corpus Christi Geological Society
PO Box 1068
Corpus Christi, Texas 78403

Amount _____

Sponsor Package _____



Sponsorship Packages:

- Diamond (D) \$25,000+
- Emerald (E) \$15,000+
- Sapphire (S) \$5,000+
- Topaz (T) \$1,000+
- Patron (P) \$500+

Thank you for your generous support!



The 2016 Annual GCAGS convention is just around the corner! It will be an outstanding technical program! There are over 180 oral and poster presentations. Rick Paige, Bob Critchlow, and Allen Lassiter have done an excellent job! Four excellent short courses and field trips are planned. There are 2 guest activities. Thank you Stephen Thomas, JR Jones, and Darlene Murry!

The Sunday evening Ice Breaker will feature Margaritas and Mariachis! After the Happy Hour on Monday, we will head over to Brewster's Street Ice House for cold beer and bluegrass music – with *Texas Grassroots* featuring a two time Texas Fiddle Champion and two local geologists.

Check it all out on our website: www.gcags2016.com.

We will need judges. Please volunteer or say yes when asked to help.

Companies are continuing to support the convention with sponsorships. We appreciate their early support and confidence. I personally ask you to consider a sponsorship. Supporting companies include:

Chevron	Emerald
American Shoreline, Inc.	Sapphire
Anadarko	Sapphire
ExxonMobil	Sapphire
Suemaer Exploration & Production	Sapphire
Headington Energy Partners	Sapphire
StaBil Drill Specialties	Sapphire
Advent Enterprises	Topaz
Thunder Exploration, Inc.	Topaz
Gisler Brothers Logging	Topaz
Hydrate Energy International, LLC	Topaz
Nye Exploration & Production	Topaz
ALS Oil and Gas	Topaz
Aquila	Topaz
Legends Exploration	Topaz
American Bank	Topaz
CGG	Topaz
TRide	Topaz
Kemco	Topaz
Orion Drilling	Patron
SEI	Patron
SEIMAX Technologies	Patron
Stalker Energy, L.P.	Patron
Bill Whiting	Patron
Exploration Geophysics, Inc	Patron
Mary Broussard	Patron
Frost Bank	Patron
Geokinetics	Patron
Leon E. Comeaux & Associates	Friend

See the sponsorship form in the bulletin or contact Lonnie Blake (361-876-6614) or me for more information.

Looking Back *Thinking Forward* . . .

Dawn Bissell—General Chairman 361-960-2151



CONGRESSMAN
SOLOMON P.
ORTIZ
INTERNATIONAL
CENTER



THE ORTIZ CENTER

The Ortiz Center, managed by Spectra, is a unique venue that hosts a wide variety of events. From weddings and private parties, to business meetings, trade shows and fundraisers, we can accommodate it all. Our on-site full service catering offers a variety of menu options, sure to impress you and your guests.



GREAT FOR

- Meetings
- Trainings + Seminars
- Tradeshows + Job Fairs
- Fundraisers
- Luncheons
- Galas
- Weddings
- Quinceaneras
- Holiday Parties
- Corporate Events

Webex and teleconferencing services now available.



The Ortiz Center - www.ortizcenter.com ■ 361-879-0125 ■ Corpus Christi, TX

PROFESSIONALLY MANAGED BY





PRESIDENT'S LETTER

Happy New Year!

For those of you who don't know me, I am retired from the Texas Commission on Environmental Quality (TCEQ) and am now doing consulting. I was in the oil patch during another life in the late 70s and early 80s here in Corpus Christi and was active in CCGS. Since moving back to Corpus Christi in 1996, I rejoined CCGS. I am delighted to now help the Society by serving as President.

Thanks to two of the many volunteers who donate their time to make the CCGS a success:

- Leighton Devine chaired the annual fishing tournament in Port Aransas in July, which was another smashing success. Proceeds go to the CCGS Scholarship Fund.
- Dawn Bissell has been working for over two years now as the Chair of the 2016 GCAGS Convention, which will finally be here in Corpus Christi on September 18- 20. Even with the downturn in the oil economy, a great technical session is planned. Please go to www.gcags2016.com to register today!

CCGS is in need of two more volunteers for the new year:

- President-Elect: This officer serves on the Executive Board this year and becomes the new President at the end of the current President's term. This year, it's the learning curve.... next year you get to manage the Society.
- Technical Editor for the Bulletin: The past Editor, Sebastian Wiedmann, no longer wishes to serve as Editor.

If you are interested in serving in either of these positions, please contact any officer of the CCGS.

Since the GCAGS Convention is in September, the Executive Committee decided to move the annual kick-off bar-b-q to Thursday, October 13, at Hoegemeyer's at 711 Concrete Street. Time is 5:30 to 8:30 and cost is only \$15/person!

Luncheon meetings will continue at the Ortiz Center during November, January, February, April, and May. The Executive Committee decided that December had a small showing because of Christmas and March because of Spring Break. The price will remain at \$25/person with reservations.

One last educational event which may interest members: The South Texas Geological Society is hosting the Third Annual Texas Geo-Hydro Workshop September 30 (Friday)-October 2 (Sunday) in Boerne. Early registration ends September 1. Please go to the STGS website at www.stgs.org and look for the Texas Geo-Hydro Workshop.

Respectfully,
Barbara Beynon—President CCGS

RENEW...RENEW...RENEW...RENEW...RENEW...RENEW...RENEW...RENEW

Please RENEW for the 2016-17 Membership Period using those handy forms we mailed in August.

Everyone should have received their **2016-2017** Membership Renewal forms in the US Mail.

- **PRINTED BULLETINS** are available to any member for \$25/year. We must have a valid mailing address. Please confirm your mailing address on the renewal form.
- **Emails!** Please legibly re-write your preferred email address at the bottom of the form. We are striving to maintain **100%** of the Society reachable by email. Your email is vital if you've chosen not to receive the printed Bulletin.
- Please return the form promptly...yes, before (or at) the Kickoff party. Return of your form is *vital* to keeping our records in order, that's why we enclose a return envelope.
- **IMPORTANT:** Even if you plan to pay at the Kickoff, please bring your renewal form and payment in the envelope! Honorary and student members, please return your forms, too! Students need to update emails, employment, and contact info.
- **Pictures.** We're continuing to add pictures to our database, still not quite enough to justify a new photo directory. Send us a photo (email it to dorothyj@headington.com) – if we get enough pictures this renewal period, we'll plan on a photo directory in June.
- **PAY ONLINE** at www.ccgeo.org and follow the simple steps. We ask that you still return corrected member information via the enclosed envelope...or email it to membership@ccgeo.org...or fax it to us at 361-885-0120.

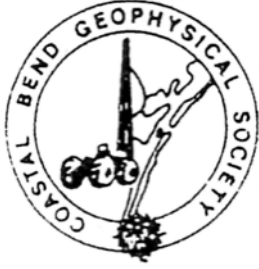


We mailed **400 renewals** this year and it is very expensive for our Societies. Your prompt return of your renewal form is *your* part of this process. Please make this effort worthwhile for our Society.

RENEW...RENEW...RENEW...RENEW...RENEW...RENEW...RENEW...RENEW

For new members, active or student. Email randyb@headington.com to get a membership form. Just print it, fill it out and send it along with your check (no fee for students) to: CCGS Membership, 500 North Shoreline Blvd., Ste. 902N, Corpus Christi, Texas 78401-0343. Contact Randy Bissell at randyb@headington.com or (361) 885-0110 with any questions. Thanks for your quick response – earlier makes it much easier! And remember:

RENEW...RENEW...RENEW...RENEW...RENEW...RENEW...RENEW...RENEW



News -

Oil is keeping its head above \$40/bbl. Gas is staying above \$2.50. Is this the future? Many seismic service contractors (and others) are still struggling. Rig count has gone up for a couple months.

<http://marketrealist.com/2016/08/us-crude-oil-rig-count-rose-6th-consecutive-week-bearish-crude-oil-prices/>

Interesting article on Natural Gas Drawdowns this summer

<http://www.econmatters.com/2016/08/surprise-inventory-drawdown-signals.html>

CBGS Business -

Some new faces in CBGS this year. Dr Subbarao Yiliseti of TAMUK Geology/Physics Department will be the CBGS VP this year. Dr. Robert Schneider who has joined the TAMUK Geology/Geophysics Department will be Education Chairman. Lance Berjke (former geophysicist with Global Geophysical) has moved to Corpus and will help with fundraising: for GCAGS, for the golf tournament, for TAMK Geophysics program, for our Geophysics Seminar..... Please welcome and thank the above for stepping up.

CBGS golf tournament has been scheduled for Oct 7th at Northshore Country Club. Contact Fermin Munoz about interest in playing or sponsoring. All sponsorship funds are used for geophysical scholarships. Scholarship applicants solicited.

Education/Events -

- GSH

"Expanding our understanding of Geoscience", Houston, Sept 14-16

Emerging technologies on SEAM Models

"Everything you always wanted to know about microseismic", Houston, Nov 9-10
Numerous technical luncheons if you happen to be in Houston. Check following link.

[Geophysical Society of Houston Calendar](#)

CBGS has a revenue sharing agreement with GSH. Mention CBGS if you register for GSH events.

- SEG

SEG Convention, 16-21 October, Dallas

SEG has 450+ eLearning courses online from \$0.99 to \$150.00(most expensive I saw)

<http://www.seg.org/professional-development/seg-on-demand>

- GCAGS Convention, Sept 18-20, Corpus Christi

- HGS

Making Money with Mature Fields, Houston, Oct 5-6, 2016

Carbonate Depositional Systems, Houston, Oct 3-4, 2016

Petroleum Geochemistry, Houston, Oct 3-4, 2016

Petrological and Geochemical screening methods, Houston, Dec 9, 2016

Thought for the month

"Do not go where the path may lead, go instead where there is no path and leave a trail" - Ralph Waldo Emerson

Monthly O&G Statistics

Texas Oil and Gas Info	Current Month	Last Month	Difference	
Texas Production	MMBO/BCF	MMBO/BCF	MMBO/BCF	
Oil	82.9	88.4	-5.5	May
Condensate	9.8	10.1	-0.3	
Gas	600	641	-41	May
	Current Month	Yr to date - 2016	Yr to date - 2015	
Texas Drilling Permits	631	4,170	6,534	July
Oil wells	514	3,268	5,610	
Oil and Gas	397	2,456	4,080	
Gas wells	34	226	47	
Other	7	73	93	
Total Completions	856	7,285	13,333	July
Oil Completions	568	5,621	10,610	
Gas Completions	243	1,304	1,834	
New Field Discoveries	2	14	48	
Other	20	176	180	

Thought for the month:

A vision without a task is but a dream, a task without a vision is drudgery, a vision with a task is the hope of the world

- Inscription on a wall in Sussex England, circa 1730

Lonnie Blake—CBGS President



The Corpus Christi Geological Society
The Coastal Bend Geophysical Society
and
The 2016 GCAGS Convention



Invite you to the
**GCAGS Post-Convention Party &
Society Kickoff Bar-B-Q**

Thursday, October 13, 2016

5:30 to 8:00 p.m.

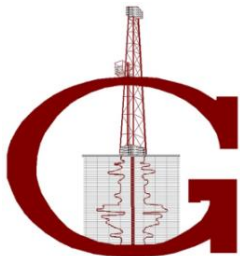
Hoegemeyer's Barbeque Barn

711 Concrete Street (Located across from Concrete Street Amphitheater).

From downtown, take Chaparral St. north, then left on Belden St.

\$15 per member/student/guest*

Complimentary Bar Courtesy of



GISLER BROTHERS LOGGING CO., INC.

South Texas Operations

P.O. BOX 485 RUNGE, TEXAS 78151
Office : (830) 239-4651 Cell : 361-676-1369

West Texas Operations

P.O. BOX 1759 STANTON, TEXAS 79782
Office : (432) 270-7730 Cell: 361-676-1369

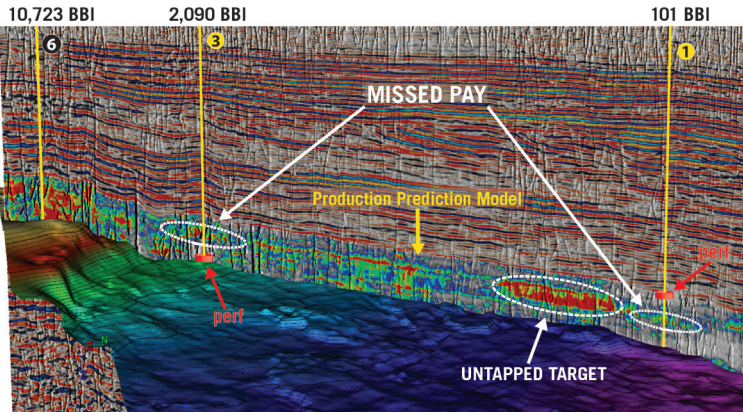
RSVP (required) by Monday, October 10

Wes Gisler, wes@gislerbrotherslogging.com, 1-830-239-4651

Dorothy Jordan, Dorothy@headingtonenergy.com, 361-885-0113

*Special thanks to the GCAGS Leadership for sponsoring meal costs and reducing the price for everyone!

SEISMIC-BASED ANALYTICS



An arbitrary line through 3 vertical wells in the West Texas Permian Basin shows the lateral variations of the Production Prediction Model and reveals refrac potential for Wells 1 and 3 where the red disks indicate the actual completion intervals and the white circles highlight the missed pay. Note the untapped target near Well 1.

In today's challenging market, no one can afford a bad well. Global's seismic-based analytics can help you avoid the pitfalls and pinpoint the sweet spots. By integrating seismic, geological, and engineering data, this proprietary workflow identifies the most prospective areas and zones for drilling - down to the stage level! This reduces risk, optimizes spend, and greatly increases the chance for every well and stage to be a winner.

- High-grade prospective drilling areas and zones
- Enhance well planning and geosteering
- Optimize completion placements and frac design
- Predict well performance at stage level
- Boost EUR of individual wells
- Identify candidates for refrac

Global's **SEISMIC-BASED ANALYTICS** approach is field-proven with successful projects in both conventional and unconventional reservoirs. Contact us today to find out how Global can help you make every well a winner.

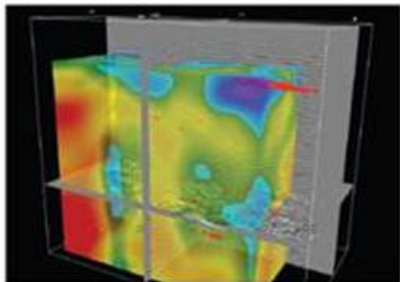
FIND WHAT YOU'VE BEEN MISSING

For More Information:
www.globalgeophysical.com/ANALYTICS or
Contact ANALYTICS@globalgeophysical.com



SEIMAXSM
TECHNOLOGIES

Innovative Seismic
Processing Solutions



**2D and 3D Land and Marine
Pre-Stack Time and Depth Imaging**

**Pre- and Post-Stack Attributes
for Amplitude, Frequency and
Resolution**

4805 Westway Park Blvd. Houston, TX 77041
p: 832.554.4301 www.seimaxtech.com



**CORPUS CHRISTI GEOLOGICAL SOCIETY
COASTAL BEND GEOPHYSICAL SOCIETY**



LUNCHEON MEETING ANNOUNCEMENT

WEDNESDAY, NOVEMBER 16, 2016

-
- Location:** Congressman Solomon P. Ortiz International Center, 402 Harbor Drive, Corpus Christi, TX 78401 <http://ortizcenter.com>
- Bar Sponsor:** To be announced (*sponsors needed!*)
- Student Sponsor:** Core Laboratories and Corpus Christi Geological Society
- Time:** 11:30 am Bar, Lunch follows at 11:45 am, Speaker at 12:00 pm
- Cost:** \$25.00 (additional \$10.00 surcharge without reservation; No-shows may be billed and non-RSVP attendees cannot be guaranteed a lunch); **FREE** for students with reservation (discounted by our generous sponsors)!
- Reservations:** Please **RSVP** by 4PM on the FRIDAY before the meeting!
E-Mail: wes@gislerbrotherslogging.com

Please note that luncheon RSVPs are a commitment to the Ortiz Center and must be paid even if you can't attend the luncheon.



<http://www.corelab.com>



<http://www.ccgeo.org>

PLEASE THANK OUR GENEROUS SPONSORS!!!

**SPONSORSHIPS FOR THE TUESDAY PINT NIGHT SOCIAL GATHERINGS AND
WEDNESDAY LUNCHEON MEETING BARS ARE OPEN!!!**

**Please consider a CCGS/CBGS sponsorship!!! It's a great way to advertise both
your company and the services it provides!!!**

Inversion of Spectrally-Broadened 3D Seismic Data: Case Study for Olmos Unconventional Play, South Texas

Presented by: Bruce Moriarty, Principal Geophysical Advisor, Lumina Geophysical

Summary

In South Texas, tight gas sandstone reservoirs in the Olmos Formation are prospective. Unfortunately, detecting and mapping the lateral continuity of reservoir quality Olmos sands is limited by the fact that prospective pay zones are commonly below conventional seismic resolution. Thus, spectral broadening is potentially valuable if it can be shown to be useful in this area. This paper describes seismic interpretation and simultaneous inversion results of an original and a spectrally-broadened high-resolution seismic dataset across the South Texas Olmos tight sand. The incorporation of high-resolution seismic data addresses the lack of enough vertical resolution to image thin beds within the Olmos productive zone. This high-resolution seismic data results from the application of the sparse-layer inversion method (Zhang and Castagna 2011) to the original pre-stack seismic data. The method is unbiased against thin beds and thus allows the detection and resolution of thin beds below tuning thickness.

Abstract

The primary objective of this work was to identify sweet spots in the unconventional tight sand reservoir of the Olmos formation using pre-stack simultaneous inversion. The second objective was to compare the original seismic data with high-resolution seismic data, along with the resulting simultaneous inversions. High-resolution seismic data is the result of sparse layer inversion method applied to the original pre-stack seismic data. This method inverts the frequency spectrum for layer thickness and enables the detection and resolution of thin beds below tuning thickness.

Simultaneous inversion is a process which generates P impedance, S impedance, and density at the same time, though only the P impedance results will be shown today. The P impedance volume generated from the original seismic lacked sufficient vertical resolution to image thin beds (~ 25-30 ft/ 7.6-9 m) within the productive interval of the Olmos formation. High-resolution seismic was used to address this challenge. The process of spectral layer inversion improved the resolution from about 98 feet to 47 feet. At this resolution, two additional horizons can be mapped to separate individual porosity zones within the productive Olmos interval.

Using the P impedance volume generated from the high-resolution seismic, we were able to map a new low impedance anomaly within the study area. This new anomaly correlates with the lower interval of the high porosity zone associated with better Olmos production, and should provide new potential for field development.

This general approach may be very useful in many plays worldwide.

About our Presenter:



Bruce Moriarty attended Colgate University in Syracuse, New York, earning his Bachelor Degree in Geology in 1972. He also attended the University of South Carolina – Columbia.

Bruce was a Project Manager for Visos, coordinating 3-D seismic surveys in the Gulf Coast, Mid-Continent, and Rocky Mountain Regions in a multi-component program, including the Bureau of Economic Geology and PGS Onshore. He has served as the Principal Geophysicist for El Paso Production, Chief Geophysicist for Dominion Exploration & Production, as well as Geophysical Advisor for Swift Energy. He presently serves as Principal Geophysical Advisor for Lumina Geophysical in Houston, Texas.

Bruce is an expert in utilizing new seismic technologies to extend the production life and economics of existing fields through enhanced well performance and recovery. He has researched and published reports on identifying new targets in mature unconventional plays by utilizing new seismic technologies.

Bruce was the President of the Denver Geophysical Society in 1985, the Treasurer of the Geophysical Society of Houston in 2010. He is also a member of the Society of Exploration Geophysicists (SPE), American Association of Petroleum Geologists (AAPG), and enjoys skiing, golf, and motorcycling.



sponsors



Actively Seeking High Quality
Drilling Prospects

Contacts:

Mike Layman (Geophysicist)	361-844-6922
Tom Winn (Geologist)	361-844-6992
Southern Winn (Geologist)	361-844-6998

800 North Shoreline Blvd.
19th Floor, North Tower
Corpus Christi, Texas 78401

Office: 361-844-6900 Fax: 361-844-6901



HYDROCARBON LOGGING SERVICE



Operating in South Texas and Gulf Coast since 1961

Contact: Mike Bullard

P.O. Box 1011

Kingsville, Texas 78364

361-221-9717

Email:md_bullard@sbcglobal.net



CBGS GOLF TOURNAMENT

Coastal Bend Geophysical Society
NorthShore Country Club
October 7, 2016
12:30 p.m. Shotgun Tee Time
Four-Man Scramble
100 Player Limit * Sign up Early



Name _____
Email _____
Company Name _____
Address _____
City, State, Zip _____
Phone _____
____ Yes, Please Place on a Team
____ I want to be on a Team with: (list below)
Player 2: _____
Player 3: _____
Player 4: _____
_____ \$100 per Golfer
_____ \$400 per Team (4 players)
_____ Sponsorship Total

_____ **TOTAL AMOUNT DUE**

PAYMENT INFORMATION

____ Check Enclosed
Make Checks payable to:
Coastal Bend Geophysical Society
c/o Fermin Munoz
619 E. Broadway
Portland, TX 78374
361-960-1126
FMunoz04@hotmail.com

Sponsorships

___ Golf Beverage Cart \$700 ea. _____
___ Golf Holes (18) \$200 ea. _____
___ Longest Drive
 (2) \$100 ea. _____
___ Closest to the Pin
 (2) \$100 ea. _____
Door Prize Sponsor _____

Total Sponsorship \$ _____

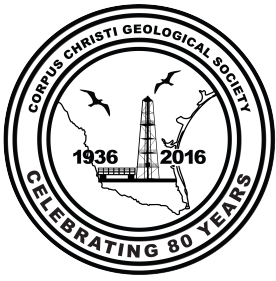
NorthShore Country Club

801 E. Broadway St.

Portland, TX 78374

Entry Fee Includes:

- Green Fees
- Range Balls
- Carts
- Beverages on the Golf Course
- Door Prizes
- Dinner Buffet



Corpus Christi Geological Society Scholarship Application Guidelines Spring 2017 Semester

1. Applicant must be majoring in Earth Sciences and enrolled for the award semester (i.e. Spring 2017) at a college in the local area. Applicant must be a member of the Corpus Christi Geological Society.
2. Fill out the application form clearly, completely, and sign it.
3. Short essay clearly explaining how this scholarship will assist you in achieving your geologic career goals and the reasons your application should be considered by the Committee.
4. Two (2) letters of recommendation - one must be from a geoscience faculty member or from a supervisor with whom applicant has worked with in a geoscience undertaking.
5. Applicant must provide a school transcript, please make sure it has your name on it. A web printout is acceptable.
6. **Applications must be postmarked by: October 24, 2016**
Application packet may be emailed in a shareable format (i.e. pdf, docx, etc) to **bissells@swbell.net**.

Mail completed application to: Dawn Bissell, CCGS Scholarship Committee
Chairman, 253 Circle Drive, Corpus Christi, TX 78411

Send an email to **bissells@swbell.net** once you've mailed your application. We need **YOUR** email address. *Award notifications will be sent via email!!!*

Please read requirements carefully and submit only complete applications. Applicants who have received a CCGS scholarship in the past are eligible to apply again.

Scholarships will be awarded based on merit and need. The award amounts may vary with the minimum individual award being \$500.

Award recipients will be recognized at the monthly **luncheon November 16, 2016** and are encouraged to attend.

Board Members:

Dawn Bissell

Brent Hopkins

Barbara Beynon - CCGS President

Beth Priday

JR Jones

BJ Thompson



Corpus Christi Geological Society
Scholarship Application Form
Spring 2017
(Must be postmarked by October 24, 2016)

Last Name: _____ First Name: _____

Mailing address: _____
(where award may be mailed if applicant is unable to attend award presentation)

City: _____ State: _____ Zip Code: _____

Active Email: _____

*Award notifications will be sent via email!!! Email bissells@swbell.net once you've submitted your application. I need **YOUR** email address.*

Daytime Phone: _____ Alternate Phone: _____

University Attending in Spring 2017: _____

Department: _____ Major: _____

Scholarship is for class level (circle one):

Freshman Sophomore Junior Senior Graduate Student

Total Hours Completed: _____ Overall GPA (Minimum 2.5): _____

Total Hours - Geology: _____ Geology GPA (Minimum 3.0) _____

Hours Planned for Scholarship Semester: _____ Geology Hours: _____

Will this scholarship be used toward field camp? Yes No

Prior recipient of CCGS Scholarship? Yes No

Are you a student member of CCGS? Yes No
(If no, membership application is included. Must be a member of CCGS.)

Applicant Signature _____ Date _____

Mail application, along with essay, two letters of recommendation, and transcript to Dawn Bissell, CCGS Scholarship Committee Chairman
253 Circle Drive, Corpus Christi, TX 78411 **must be postmarked by October 24, 2016.**
Email bissells@swbell.net once you've mailed your application. **Award notifications will be made via email!!!**

SPONSORS

Performance You Can Count On

An acknowledged leader in today's exploration and production industry, EOG Resources looks ahead.

Annually, EOG is one of the most active drillers in the United States. We grow through the drill bit, rather than seeking major acquisitions or mergers to bolster our reserves and production. This unrelenting focus on organic production growth has proven successful because we have identified significant North American resource plays for tomorrow. Our creative, hardworking explorationists and those who support them utilize the latest technology available in the marketplace, adapting and modifying it to meet the challenges EOG faces. With a focus on returns, EOG continues to produce peer-leading financial and operational results.

In 2013, EOG became the largest onshore oil producer in the Lower 48, and we're still growing.

EOG Resources, Inc.

539 N. Carancahua
Suite 900
Corpus Christi, TX 78401-0908
361-883-9231
www.eogresources.com



EXPLORING SINCE 1968



802 N. Carancahua St
Suite 1000
Corpus Christi, TX 78401-0015
Phone: (361) 884-8824
Fax: (361) 884-9623

SPONSORS

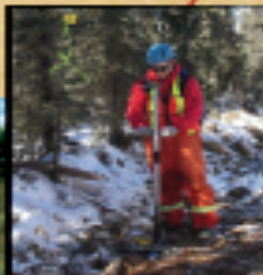
KNOWLEDGE REVEALED

PURPOSE DRIVEN

- Unrivaled land seismic acquisition capabilities
- Specific solutions for all terrains and environments (land, shallow water/transition zone and OBC)
- Purpose driven crews with proven experience around the world
- Processing and Interpretation services revealing the project knowledge you need
- Full azimuth 3D and 3C coverage in unconventional resource plays
- Multi-Client opportunities in North America, Latin America and Australasia
- Proven experience in:
 - Azimuthal anisotropy resolution and fracture identification
 - Multicomponent processing
 - AVO processing and inversion




INNOVATIVE
GEOPHYSICAL
SOLUTIONS



geokinetics.com

SPONSORS



Nueces Energy, Inc.
P.O. Box 252
Corpus Christi, Texas 78403
Office: (361) 884-0435
Fax: (361)-654-1436
www.nuecesland.com

Nueces Energy, Inc. is a complete land services company in the business of providing professional landmen and project management to various energy related jobs primarily in the oil and gas industry.

With over 30 years of industry experience, we specialize in determining surface and subsurface ownership and negotiating and acquiring contracts, rights of way agreements, and easements to provide our clients with the legal right to explore and develop oil and gas resources. We provide a full service land company capable of managing any project no matter how large or small.



THUNDER EXPLORATION, INC.

Celebrating 30+ years of prospect generation and exploration in the following South Texas plays and trends.

Frio	San Miguel	Edwards
Jackson	Austin Chalk	Pearsall
Yegua	Eagle Ford	Sligo
Wilcox	Buda	Cotton Valley
Olmos	Georgetown	Smackover

Thunder is currently seeking non-operated working interest participation in projects and prospects.

Contact **Walter S. Light Jr.**
President/Geologist
 713.823.8288
 EMAIL: wthunderx@aol.com

Headington Oil Company is now...



HEADINGTON
 ENERGY PARTNERS, LLC

Proudly operating in South Texas.

For more information contact:
Randy Bissell, randyb@headingtonenergy.com or call 361-885-0113



Offices in Corpus Christi, Sarita, and McKinney, Texas - Exploring and Developing properties
 In South Texas, Permian Basin , East Texas & Oklahoma



SABALO ENERGY

SABALO ENERGY | P.O. BOX 2907 | CORPUS CHRISTI, TX 78403 | 361.888.7708 | SABALOENERGY.COM

SPONSORS



Austin Office:

1717 W. 6th Street, Ste 230
Austin, Texas 78703
512.457.8711
Contact: Bill Walker, Jr.
bwalker@stalkerenergy.com

Houston Office:

2001 Kirby Drive, Suite 950
Houston, Texas 77019
713.522.2733
Contact: Todd Sinex
tsinex@stalkerenergy.com

www.stalkerenergy.com



LMP PETROLEUM, INC.

EXPLORING SOUTH TEXAS

615 N. Upper Broadway
Suite 1770
Wells Fargo Bank Building
Corpus Christi, Texas 78401-0773

361-883-0923
Fax: 361-883-7102
E-mail: geology@lmpexploration.com

SPONSORS

CHARGER EXPLORATION

Michael L. Jones
President/Geologist

Onshore Gulf Coast Prospect Generation and Consulting

1001 McKinney Street, Suite 801 Houston, TX 77002
Ofc: 713.654.0080 Cell: 713.398.3091
Email: mjones@chargerexploration.com
www.chargerexploration.com

Serving Corpus Christi for over 20 years

 **mail express**
501 S. Tancahua St.
Corpus Christi, TX 78401

- We process 1st class mail with a direct discount to you
- No meter procedure change except for the amount you meter your envelopes

CALL 888-4332 for details - Ask for Anne

That old gas kick could be your next discovery!

Characterization of Unconventional Reservoirs

Traditional methods of core analysis cannot yield acceptable results when applied to unconventional reservoirs such as gas shales, tight gas sands, coals and thin bed formations.

Production controls on these reservoirs are not limited to hydrocarbons in place, permeability and porosity. Pay identification requires an understanding of complex lithologies and exotic mineralogies.

Only Core Lab offers the comprehensive range of unique technologies required to optimize your unconventional reservoirs.

Geological Petrophysical Geomechanical Geochemical



To learn more about our unique unconventional reservoir evaluation services contact Core Lab.
(713) 328-2121 or (361) 289-5457 psinfo@corelab.com

© 2005 Core Laboratories. All rights reserved.

SPONSORS



Since 1905

Royal Exploration Company, Inc.

500 N Shoreline Blvd, Suite 807 N
Corpus Christi, Texas 78401-0336

Alan Costello – Geologist
acostello@royalcctx.com

Matt Hammer – Exploration Manager
mhammer@royalcctx.com

Telephone: 361/888-4792

Fax: 361/888-8190

www.**GeoSteering**.com

281-573-0500
info@geosteering.com

Free introductory consultation
with modeling:
let us demonstrate whether
images or propagation resistivity
could add value to your well.

Personnel with degrees & 20+ years of oilfield experience

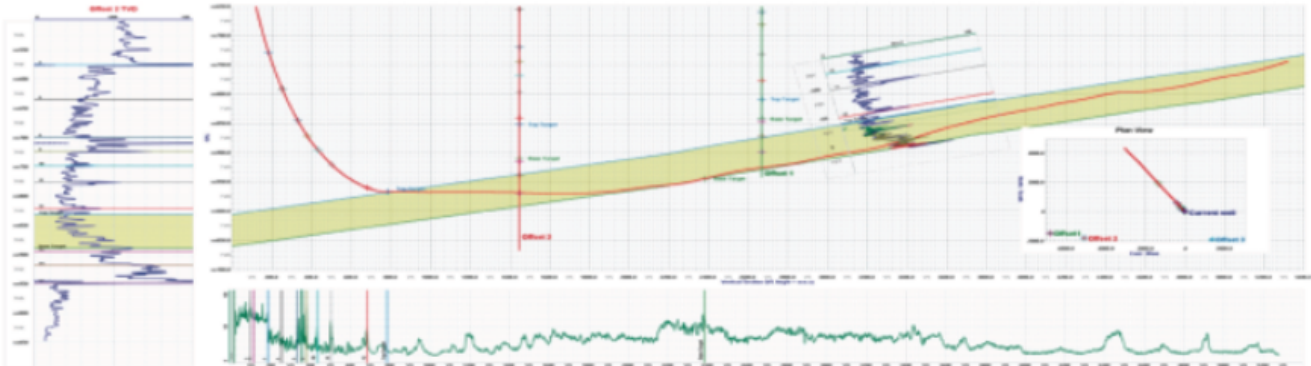
Proprietary software

TST interpretation for GR only jobs

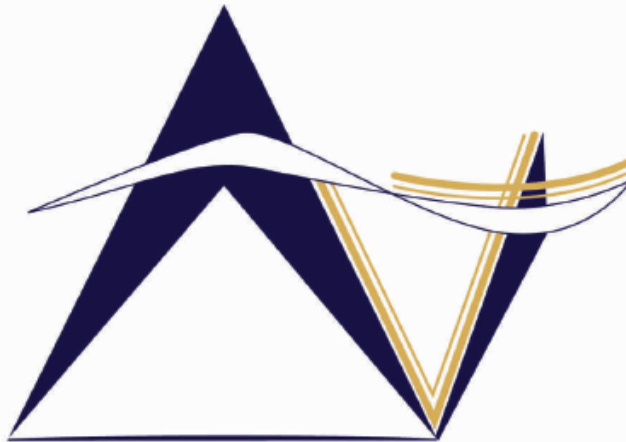
**Image displays / interpretation for jobs with azimuthal GR,
resistivity or density**

**Resistivity modelling / interpretation for jobs with LWD
propagation resistivity**

Real-time (always)



SPONSORS



VirTex Operating Company, Inc.

*615 North Upper Broadway, Suite 525, Corpus Christi, Texas 78477
(361) 882-3046*

SEI®

Seismic Exchange, Inc.

Strategic Speculative Surveys
Geophysical Data Marketing & Management

YOUR
Full Service
National
Seismic Data
Marketing Firm

Corpus Marketing Contact:
Beau Patrick

Corpus Office
361.884.2936

CORPUS CHRISTI DALLAS DENVER HOUSTON NEW ORLEANS TULSA

11050 Capital Park Dr., Houston, Texas 77041 832.590.5100

www.seismicexchange.com

Corpus Christi Geological Society Papers available for purchase at the Texas Bureau of Economic Geology

Note: Publication codes are hyperlinked to their online listing in [The Bureau Store](http://begstore.beg.utexas.edu/store/) (<http://begstore.beg.utexas.edu/store/>).

Cretaceous-Wilcox-Frio Symposia, D. B. Clutterbuck, Editor, 41 p., 1962.
[CCGS 002S](#) \$15.00

Type Logs of South Texas Fields, Vol. I, Frio Trend. Compiled by Don Kling. Includes 134 fields. 158 p., 1972. Ring binder.
[CCGS 015TL](#) \$25.00

Type Logs of South Texas Fields, Vol. II, Wilcox (Eocene) Trend. Compiled by M. A. Wolbrink. 98 p., 1979. Ring binder.
[CCGS 016TL](#) \$25.00

Field Trip Guidebooks

South Texas Uranium. J. L. Cowdrey, Editor. 62 p., 1968.
[CCGS 102G](#) \$12.00

Hidalgo Canyon and La Popa Valley, Nuevo Leon, Mexico. CCGS 1970 Spring Field Conference. 78 p., 1970.
[CCGS 103G](#) \$8.00

Padre Island National Seashore Field Guide. R. N. Tench and W. D. Hodgson, Editors. 61 p., 1972.
[CCGS 104G](#) \$5.00

Triple Energy Field Trip, Uranium, Coal, Gas—Duval, Webb & Zapata Counties, Texas. George Faga, Editor. 24 p., 1975.
[CCGS 105G](#) \$10.00

Minas de Golondrinas and Minas Rancherías, Mexico. Robert Manson and Barbara Beynon, Editors. 48 p. plus illus., 1978.
[CCGS 106G](#) \$15.00

Portrero Garcia and Huasteca Canyon, Northeastern Mexico. Barbara Beynon and J. L. Russell, Editors. 46 p., 1979.
[CCGS 107G](#) \$15.00

Modern Depositional Environments of Sands in South Texas. C. E. Stelling and J. L. Russell, Editors. 64 p., 1981.
[CCGS 108G](#) \$15.00

Geology of Peregrina & Novillo Canyons, Ciudad Victoria, Mexico, J. L. Russell, Ed., 23 p. plus geologic map and cross section, 1981.
[CCGS 109G](#) \$10.00

Geology of the Llano Uplift, Central Texas, and Geological Features in the Uvalde Area. Corpus Christi Geological Society Annual Spring Field Conference, May 7-9, 1982. Various paginated. 115 p., 53 p.
[CCGS 110G](#) \$15.00

Structure and Mesozoic Stratigraphy of Northeast Mexico, prepared by numerous authors, variously paginated. 76 p., 38 p., 1984.
[CCGS 111G](#) \$15.00

Geology of the Big Bend National Park, Texas, by C. A. Berkebille. 26 p., 1984.
[CCGS 112G](#) \$12.00

GEO LINK POST

<http://www.lib.utexas.edu/books/landsapes/index.php> Free service. Rare, fragile, hard-to-find, public domain documents covering various topics about the landscape of Texas. Includes the Texas Geological Survey from 1887 until 1894.

USGS TAPESTRY OF TIME AND TERRAIN <http://tapestry.usgs.gov> The CCGS is donating to all of the 5th and 6th grade schools in the Coastal Bend. Check it out--it is a spectacular map. You might want to frame one for your own office. The one in my office has glass and a metal frame, and It cost \$400 and it does not look as good as the ones we are giving to the schools.

FREE TEXAS TOPOS'S <http://www.tnris.state.tx.us/digital.htm> these are TIFF files from your state government that can be downloaded and printed. You can ad them to SMT by converting them first in Globalmapper. Other digital data as well.

FREE NATIONAL TOPO'S [http://store.usgs.gov/b2c_usgs/b2c/start/\(xcm=r3standardpitrex_prd\)/.do](http://store.usgs.gov/b2c_usgs/b2c/start/(xcm=r3standardpitrex_prd)/.do) go to this webpage and look on the extreme right side to the box titled TOPO MAPS DOWNLOAD TOPO MAPS FREE.

<http://www.geographynetwork.com/> Go here and try their top 5 map services. My favorite is 'USGS Elevation Date.' Zoom in on your favorite places and see great shaded relief images. One of my favorites is the Great Sand Dunes National Park in south central Colorado. Nice Dunes.

<http://antwrp.gsfc.nasa.gov/apod/asropix.html> Astronomy picture of the day--awesome. I click this page everyday.

<http://www.spacimaging.com/gallery/ioweek/iow.htm> Amazing satellite images. Check out the gallery.

<http://www.ngdc.noaa.gov/seg/topo/globegal.shtml> More great maps to share with kids and students.

www.ccgeo.org Don't forget we have our own we page.

<http://terra.nasa.gov/gallery/> Great satellite images of Earth.

www.ermaper.com They have a great free downloadable viewer for TIFF and other graphic files called ER Viewer.

<http://terrasrver.com> Go here to download free aerial photo images that can be plotted under your digital land and well data. Images down to 1 meter resolution, searchable by Lat Long coordinate. Useful for resolving well location questions.

TYPE LOGS OF SOUTH TEXAS FIELDS by Corpus Christi Geological Society

NEW (2009-2010)TYPE LOGS IN RED; ***2011;**

lost now found

ARANSAS COUNTY

Aransas Pass/McCampbell Deep
Bartell Pass
Blackjack
Burgentine Lake
Copano Bay, South
Estes Cove
Fulton Beach
Goose Island
Half Moon Reef
Nine Mile Point
Rockport, West
St. Charles
Tally Island
Tract 831-G.O.M. (offshore)
Virginia

BEE COUNTY

Caesar
Mosca
Nomanna
Orangedale(2)
Ray-Wilcox
San Domingo

Tulsita Wilcox

Strauch_Wilcox

BROOKS COUNTY

Ann Mag
Boedecker
Cage Ranch
Encintas
ERF
Gyp Hill
Gyp Hill West
Loma Blanca
Mariposa
Mills Bennett
Pita
Tio Ayola
Tres Encinos

CALHOUN COUNTY

Appling
Coloma Creek, North
Heyser
Lavaca Bay
Long Mott
Magnolia Beach
Mosquito Point
Olivia
Panther Reef
Powderhorn
Seadrift, N.W.
Steamboat Pass
Webb Point
S.E. Zoller

CAMERON COUNTY

Holly Beach
Luttes
San Martin (2)
Three Islands, East

Vista Del Mar

COLORADO COUNTY

E. Ramsey
Graceland N. Fault Bik
Graceland S. Fault Bik

DEWITT COUNTY

Anna Barre
Cook
*******Nordheim**
Smith Creek
Warmsey
Yorktown, South

DUVAL COUNTY

DCR-49
Four Seasons
Good Friday
Hagist Ranch
Herbst
Loma Novia
Petrox
Seven Sisters
Seventy Six, South
Starr Bright, West

GOLIAD COUNTY

Berclair
North Blanca
Bombs
Boyce
Cabeza Creek, South
Goliad, West
St Armo
Terrell Point

HIDALGO COUNTY

Alamo/Donna
Donna
Edinburg, West
Flores-Jeffress
Foy
Hidalgo

LA BLANCA

LA Blanca
McAllen& Pharr
McAllen Ranch
Mercedes
Monte Christo, North
Penitas
San Fordyce
San Carlos
San Salvador
S. Santallana
Shary
Tabasco
Weslaco, North
Weslaco, South

JACKSON COUNTY

Carancahua Creek
Francitas
Ganado & Ganado Deep
LaWard, North
Little Kentucky

Maurbro

StewartSwan Lake

Swan Lake, East
Texana, North
West Ranch

JIM HOGG COUNTY

Chaparosa
Thompsonville,N.E.

JIM WELLS COUNTY

Freebom
Hoelsher
Palito Blanco

Wade City

KARNES COUNTY

Burnell
Coy City
Person
Runge

KENEDY COUNTY

Candelaria
Julian
Julian, North
Laguna Madre

Rita

Stillman

KLEBERG COUNTY

Alazan
Alazan, North
Big Caesar
Borregos
Chevron (offshore)
Laguna Larga
Seeligson
Sprint (offshore)

LA SALLE COUNTY

*****Pearsall**

LAVACA COUNTY

Hallettsville
Hope
Southwest Speaks
Southwest Speaks Deep

LIVE OAK COUNTY

Atkinson
Braslau
Chapa
Clayton
Dunn
Harris
Houdman
Kittie West-Salt Creek
Lucille
Sierra Vista
Tom Lyne
White Creek
White Creek, East

MATAGORDA COUNTY

Collegeport

MCMULLEN COUNTY

Arnold-Weldon

Brazil
Devil's Waterhole
Hostetter
Hostetter, North

NUECES COUNTY

Agua Dulce (3)
Arnold-David
Arnold-David, North
Baldwin Deep
Calallen
Chapman Ranch
Corpus Christi, N.W.
Corpus Christi West C.C.
Encinal Channel
Flour Bluff/Flour Bluff, East
GOM St 9045(offshore)
Indian Point
Mustang Island
Mustang Island, West
Mustang Island St.
889S(offshore)
Nueces Bay/Nueces Bay
West

Perro Rojo

Pita Island
Ramada
Redfish Bay
Riverside
Riverside, South
Saxet
Shield
Stedman Island

Turkey Creek

REFUGIO COUNTY

Bonnieview/Packery Flats
Greta
La Rosa
Lake Pasture
Refugio, New
Tom O'Connor

SAN PATRICIO COUNTY

Angelita East
Commonwealth
Encino
Enos Cooper
Geronimo
Harvey
Hiberia
Hodges
Mathis, East
McC Campbell Deep/Aransas Pass
Midway
Midway, North
Odem

Plymouth

Portilla (2)

Taft
Taft, East
White Point, East

STARR COUNTY

El Tanque
Garcia
Hinde
La Reforma, S.W.

Lyda

Ricaby
Rincon
Rincon, North
Ross
San Roman
Sun
Yturria

VICTORIA COUNTY

Helen Gohike, S.W.
Keeran, North
Marcado Creek
McFaddin
Meyersville
Placedo

WEBB COUNTY

Aquilares/Glen Martin
Big Cowboy
Bruni, S.E.
Cabezon
Carr Lobo
Davis
Hirsch
Juanita
Las Tiendas
Nicholson
O'Hem
Olmitos
Tom Walsh

WHARTON COUNTY

Black Owl

WILLACY COUNTY

Chile Vieja

La Sal Vieja
Paso Real
Tenerias
Willamar

ZAPATA COUNTY

Benavides
Davis, South
Jennings/Jennings, West
Lopeno
M&F
Pok-A-Dot

ZAVALA COUNTY

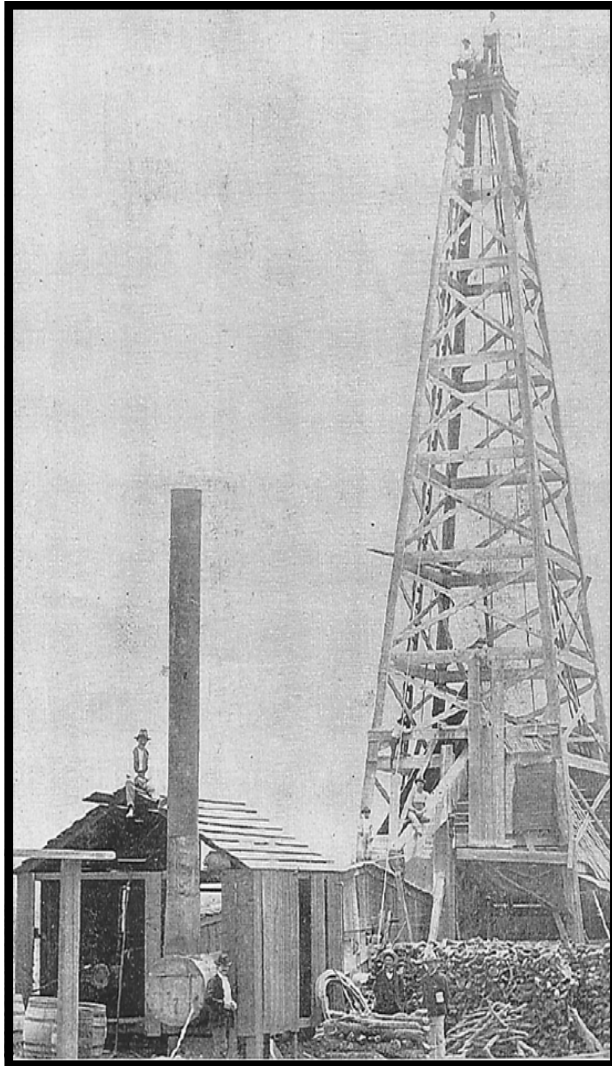
El Bano

Call Coastal Bend Geological Library, Maxine: 361-883-2736
1 log -- \$10 each, 5-10 logs \$9 each and 10 + logs \$8.00 each – plus postage

OIL MEN
TALES FROM THE SOUTH TEXAS OIL PATCH
DVD
MEMBER PRICE \$25
NON-MEMBER \$30



To Order DVD
Sebastian Wiedmann
[**swiedmann.geo@gmail.com**](mailto:swiedmann.geo@gmail.com)
If mailed add \$5.00



Wooden Rigs—Iron Men
The Story of Oil & Gas in South
Texas
By Bill & Marjorie K. Walraven
Published by the
Corpus Christi Geological Society

Corpus Christi Geological Society
C/O Javelina Press
P. O. Box 60181
Corpus Christi, TX 78466

Order Form

Mail order form for Wooden rigs-Iron Men. The price is \$75 per copy,
which includes sales tax, handling, and postage

Name _____

Address _____

City, State, Zip _____

No. of books _____ Amount enclosed _____

Send to Corpus Christi Geological Society Book Orders

P. O. Box 60181

Corpus Christi, TX. 78466 Tax exempt# if applicable _____



Kyle Barker
Geologist / Geosteering Manager
812.756.2216
kbarker@geotechloggingservices.com

P.O. Box 305 Office: 512.308.8200
Red Rock, TX 78662 Fax: 830.839.4832
www.geotechloggingservices.com

david becker

geologist

David Becker
exploration
geologist

o: (361) 884-3613
f: (888) 869-2011

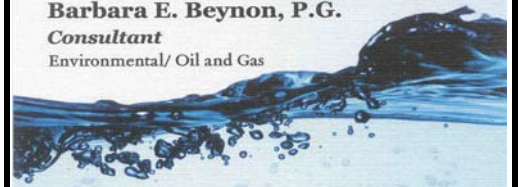
600 leopard st. ste 706
corpus christi, tx 78473

dkbecker1137@sbcglobal.net

Barbara E. Beynon, P.G.

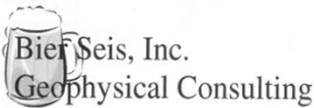
Consultant

Environmental/ Oil and Gas



(361) 774-3369

Bbeynon77@yahoo.com



David Biersner, President
19446 Arrowood Place
Garden Ridge, Tx 78266
Cell: 281.744.7457
E-Mail: bierseis@yahoo.com

Field Quality Control
Program Management
Permit Management
Seismic Line Clearing
Supervision



Dawn S. Bissell
Geoscientist

Advent Geoscience Consulting, LLC

Phone: 361-960-2151
Fax: 961-854-2604
Email: bissells@swbell.net

253 Circle Drive
Corpus Christi, TX 78411
Home: 361-854-2635



James Bloomquist
Business Development Manager
jbloomquist@integrityseismic.com

Office 713-357-4706 ext 7008
Cell 281-660-9695
Fax 713-357-4709

16420 Park Ten Place
Suite 240
Houston, TX 77084

MUD LOGGING SERVICE



Since 1961

MIKE BULLARD

(361) 221-9717 Office
(361) 522-1245 Cell
E-Mail md_bullard@sbcglobal.net

(361) 211-9715 Fax
P.O. Box 1011
Kingsville, Tx 78363



Elizabeth Chapman
Business development/marketing

flamingo
SEISMIC SOLUTIONS

11777 Katy Freeway, Ste 570 Houston, TX 77079
office: 281.977.7432 ext 109 fax: 281.829.1788
cell: 713.817.4232 email: elizabeth@flamingoseismic.com

www.flamingoseismic.com

James L. Claughton
CONSULTING GEOLOGIST

Office | 361-887-2991
Fax | 361-883-4790
Cell | 361-960-2014
clausoie@sbcglobal.net

615 North Upper Broadway
Suite 1935
Corpus Christi, Texas
78401-0779

TEXAS LONE STAR
PETROLEUM CORPORATION



JEFF COBBS
President - Geologist

615 Leopard St., Suite 336 Office (361) 883-2911
Corpus Christi, Texas 78401-0610
jc@tlspc.com Cell (361) 960-0530

Jim Collins
Geoscientist



361.537.4034

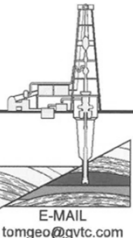
jim@gulfcoastgas.com



Frank G. Cornish
Consulting Geologist
615 N. Upper Broadway, Suite 1770
Corpus Christi, TX 78401
frank.cornish@gmail.com

361-883-0923 (o)
1-800-510-5810 (f)
361-563-9184 (m)

TOM DAVIDSON
GEOLOGIST



28550 IH-10 WEST SUITE #4
BOERNE, TEXAS 78006

BUS: (210) 844-8963
RES: (830) 981-5883
FAX: (830) 981-5567
CEL: (210) 844-8963

E-MAIL
tomgeo@gvtc.com

SEIMAX
TECHNOLOGIES

Sara Davis
Director of Marketing & Business Development

4805 Westway Park Blvd., Houston, TX 77041
p: 832.554.4301 d: 832.554.4314 c: 713.256.8737
sdavis@seimaxtech.com



LEIGHTON L. DEVINE
EXPLORATION GEOLOGIST

FROST BANK PLAZA
802 N. CARANCAHUA, SUITE 1000
CORPUS CHRISTI, TEXAS 78470

OFFICE: (361) 884-8824
FAX: (361) 884-9623
MOBILE: (361) 510-8872
ldevine@suemour.com

ONE APEX ENERGY, INC.

CHRISTIAN DOHSE
Consulting Geologist



(361) 877-3431
CHRISTIANDOHSE@GMAIL.COM
CORPUS CHRISTI, TX

Tommy Dubois
Geologist

2627 CR 312
Yoakum, Texas 77995

361-215-0223

tvdubois@yahoo.com

FOX ENVIRONMENTAL SERVICES, LLC

PLANNING | PERMITTING | REAL ESTATE MARKETING MAPS

LAURA M. FOX
LAURA@FOXENVIRONMENTALSERVICES.COM

P.O. BOX 745
ROCKPORT, TEXAS 78381
361.319.3119

YOUR CARD COULD BE HERE!!!

\$30 FOR 10 ISSUES AD. PRICES PRO-RATED. EMAIL ROBBY AT ROBERT.STERETT@GMAIL.COM.



MATTHEW FRANNEY
Geologist

600 Leopard
Suite 904
Corpus Christi, TX 78401

Email: mfraney57@att.net Phone (361) 888-6327

Enrique (Rick) Garza
Operation Supervisor
US Land



Geoscience Solutions

Rick.Garza@GlobalGeophysical.com
DIRECT +1 713-808-7428
WORK +1 361-701-6480
FAX +1 713-808-7928
13927 South Gessner Road
Missouri City, Texas 77489 USA
www.GlobalGeophysical.com

GISLER BROTHERS LOGGING CO., INC.

P.O. BOX 485
106 E. MAIN RUNGE, TX 78151



Wes Gisler
Bus. (830) 239-4651
Mobile (361) 676-1369 wes@gislerbrotherslogging.com



RAY GOVETT, Ph. D.
CONSULTING GEOLOGIST
361-855-0134

Robert Graham Phone 361-882-7681
President Fax 361-882-7685
grexploration@gmail.com Cell 361-774-3635



Exploratory Prospects & Production Development

Mail: P. O. Box 1843 606 N. Carancahua, Ste. 610
Corpus Christi, Texas 78403-1843 Corpus Christi, Texas 78401-0634



HART EXPLORATION, LLC.

RICK HART
Geologist / Owner

P.O. Box 729 Coldspring, Texas 77331 Cell: 512-626-3053
Email: hartexploration@aol.com

RIVIERA EXPLORATION, LLC

H. TONY HAUGLUM
President

600 LEOPARD ST.
SUITE 1704
CORPUS CHRISTI
TEXAS 78401


PHONE 361.884.1811
FAX 361.884.8071
E-MAIL THAUGLUM@SWBELL.NET

Chuck Henry
Vice President, Geosciences



T 713.623.7139 M 713.501.9575
chenry@frostwoodenergy.com
frostwoodenergy.com

5326 Nancy Freeway, Suite 100
Houston, TX 77024
Moving offices on Aug 15th



BRENT F. HOPKINS
PRESIDENT AND CEO
GEOLOGIST


SUEMAUR EXPLORATION & PRODUCTION, LLC

OFFICE: (361) 884-8824
FAX: (361) 884-9623
RES: (361) 643-8373
CELL: (361) 215-4855
Email: brenth@suemaur.com

FROST BANK PLAZA
802 N. CARANCAHUA, SUITE 1000
CORPUS CHRISTI, TEXAS 78401-0015

James R. Jones
Geologist


7434 Long S Drive
Corpus Christi, TX 78414
361-779-0537
jrjones5426@aol.com



EOG Resources, Inc.
539 N. Carancahua
Suite 900
Corpus Christi, TX 78401-0908
Direct: (361) 887-2681

Randy Lambert
Geological Advisor

Fax: (361) 844-1546
randy_lambert@eogresources.com



Louis R. Lambiotte
Geologist

LMP Petroleum, Inc.
615 N. Upper Broadway, Suite 1770
Corpus Christi, TX 78477
Tel: (361) 883-0923
Fax: (361) 883-7102
E-mail: geology@LMPexploration.com

CURTIS R. MAYO
GEOLOGICAL CONSULTANT

Reserve Analysis Prospect Evaluation
Expert Witness Prospect Generation


Fredericksburg, Texas 78624
Office: 830.992.2938 Cell: 830.765.0628 E-Mail: cmayo@crscres.net



emerald bay
EXPLORATION, LLC.

PATRICK J. McCULLOUGH [President]
patrickm@emeraldbayexp.com

311 Saratoga Boulevard Corpus Christi, Texas 78417
361.852.6195 [o] 361.852.6676 [r] 361.876.7881 [c]



VALOR EXPLORATION, LLC

Armando Medina
Owner / Geologist

8610 N. New Braunfels #703 • San Antonio, TX 78217
(210) 538-2170 • amedina@valorexploration.com



J. Mark Miller
President

Phone (361) 883-7700
Fax (361) 883-7701
mark@millersmithgas.com

545 N. Upper Broadway
Suite 400
Corpus Christi, Texas 78476

Wellhead Gas Marketing

Mailing Address
615 Leopard, Ste. 640
Corpus Christi, Texas 78401-0641
361.882.7888 phone
361.882.7889 fax
361.946.2581 mobile

Contact Address
1701 Southwest Parkway, Ste. 109
College Station, Texas 77840
866.946.2581 phone
866.946.2580 fax

pmueller@muelrexp.com
www.muelrexp.com



J. Paul Mueller, Jr.
President



NEU OIL & GAS, L.L.C.

Daniel J. Neuberger
Geologist and President

Austin Office:
712 Windsong Trail
West Lake Hills, Texas 78746

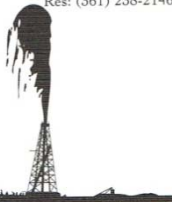
Office (361) 548-7723
Home (512) 306-1223
dan@neuoilandgas.com

YOUR CARD COULD BE HERE!!!

\$30 FOR 10 ISSUES AD. PRICES PRO-RATED. EMAIL ROBBY AT ROBERT.STERETT@GMAIL.COM.

Patrick Nye
President
patrick@nyexp.us

Office: (361) 452-1455
Cell: (361) 658-1089
Res: (361) 258-2146



NYE
Exploration & Production, LLC

802 N. Carancahua, Suite 1840
Frost Bank Plaza
Corpus Christi, TX 78401
www.nyexp.us

SAXET
PETROLEUM INC.

BRIAN E. O'BRIEN


Main: 713-783-4883
Fax: 713-783-3039
Res: 713-784-7911
Cell: 713-899-5164
E-mail: bobrien@saxetpetroleum.com

510 Bering Drive
Suite 600
Houston, Texas 77057



Ken Oriaska
Account Manager

281-497-8440
Direct: 281-249-5051
Fax: 281-558-8096
Cell: 832-455-1818
e-mail: koraska@geotrace.com
12141 Wickchester Lane, Suite 200
Houston, Texas 77079
www.geotrace.com



**Herradura
Petroleum, Inc.**

JEFF OSBORN
Geologist

711 N. Carancahua, Ste. 1750
Corpus Christi, Texas 78475
e-mail: jeff@herradurapetroleum.com

Office: 361-884-6886
Fax: 361-884-9102
Cell: 361-537-2349

Richard M. Parker
Consulting Geologist

Registered State of Texas Board of Professional Geoscientists
License # 6056

12802 Max Rd.
Brookside Village, Texas 77581
Email: rparkstar@sbcglobal.net

713-724-4380 Cell 1
713-206-3158 Cell 2
281-412-0745 Home

Lee Prajean
Business Development Manager



800.256.1147
225.247.9038
www.stratagraph.com
lprejean@stratagraph.com

P.O. Box 53848
Lafayette, LA 70505



STRATAGRAPH
Accurate Data. Reliable Solutions.



Beth Priday
Senior Geologist

VirTex Operating Co., Inc.

615 North Upper Broadway
Suite 525, WF168
Corpus Christi, Texas 78477
Bus (361) 882-3046
Fax (361) 882-7427
Mobile: (361)443-5593 • E-mail: bpriday@virtexoperating.com

**Minerals Exploration and Mining
Uranium In Situ Leach**

Richard M. Rathbun, Jr.
Certified Professional Geologist 9544 / AIPG
Texas Board of Prof. Geoscientists / Lisc. No. 4679

921 Barracuda Pl.
Corpus Christi, Texas 78411

(361) 903-8207
rathbunassoc@msn.com



ICARUS OIL AND GAS, INC.

Barry J. Rava
President

Mobile: 281-235-7507
Office: 713-621-7282

P.O. Box 820253
Houston, TX 77282-0253

Deliveries
1710 S. Dairy Ashford Rd., Ste. 202
Houston, TX 77077

barry@icarusog.com
www.icarusog.com




Wireline Services

Weatherford
Weatherford International Ltd.
401 E. Sonterra Blvd., Suite 1
San Antonio, Texas 78258
USA

Sam Roach
US Gulf Coast Wireline Sales

+1.210.930.7588 Direct
+1.210.930.7610 Fax
+1.210.241.2463 Mobile

sam.roach@weatherford.com
www.weatherford.com



Alvin Rowbatham
Sales, Gulf of Mexico

Main +1 713 789 7250
Direct +1 281 781 1065
Fax +1 713 789 7201
Mobile +1 832 372 2366
alvin.rowbatham@iongeo.com

2105 CityWest Blvd. | Suite 900
Houston, TX 77042-2839 USA

First Rock, Inc.
RGR Production First Rock I, LLC

Gregg Robertson

Main Office:
600 Leopard, Suite 1800
Corpus Christi, TX 78401
361-884-0791

San Antonio:
7979 Broadway, Ste 207
San Antonio, TX 78209
210-822-2551

361-884-0863 Facsimile
361-993-6357 Home
361-215-5559 Cell
210-260-0300 Mobile

firstrockinc@msn.com

TOM SELMAN
selmanlog.com
tselman@selmanlog.com


Ofc. (432) 563-0084
(800) 578-1006
Cell (432) 288-2259



SELMAN AND ASSOCIATES, LTD.

GEOLOGICAL CONSULTING / SURFACE LOGGING SERVICES

P.O. Box 61150 Midland, TX 79711 4833 Saratoga #624 Corpus Christi, TX 78413 P.O. Box 2993 Rock Springs, WY 82902



Petrophysics, Inc.
Velocity Surveys - Synthetics - Sonic Log Data

Joe H. Smith
President

P.O. Box 863323
Plano, Texas 75086

713.560.9733
jsmith@petrophysics.com
www.petrophysics.com

Crossroads Exploration

Gloria D. Sprague
Geologist

189 North First Street, Suite 111
Timpson, Texas 75975

Office: 936-254-3600
Mobile: 936-488-9428
gsprague4532@att.net

Charles A. Sternbach, Ph.D
President

Star Creek Energy Company
Oil and Gas Exploration

800 Wilcrest Drive, Suite 230
Houston, Texas 77042
office: 281.679.7333
cell: 832.567.7333
carbodude@gmail.com



www.starcreekenergy.com

YOUR CARD COULD BE HERE!!!
\$30 FOR 10 ISSUES AD. PRICES PRO-RATED. EMAIL ROBBY AT ROBERT.STERETT@GMAIL.COM.

THOMAS W. SWINBANK

CERTIFIED PETROLEUM GEOLOGIST
PRESIDENT

STRIKE OIL & MINERALS CORP.
P.O. Box 1339
GEORGETOWN, TEXAS 78627

PHONE/FAX 512-863-7519
HOME 512-863-7903
CELL 512-876-9585

Dennis A. Taylor
President and Chief Geologist
dennis@amshore.com

Off: (361) 888-4496
Fax: (361) 888-4588
Direct Line: (361) 844-6728
Cell: (972) 672-9916



AMERICAN SHORELINE, INC.
AMSHORE US WIND, LLC
802 N. Carancahua Street, Suite 1250
Corpus Christi, Texas 78401-0019
www.amshore.com

Environmental

Exploration & Production

JEANIE TIMMERMANN

GEOSCIENTIST
TX LICENSE #2289

7214 Everhart #9
Corpus Christi, TX 78413

(361) 991-7451
jtimmermann74@mon.com



**Davis
Petroleum
Corp.**

www.davispetroleumcorp.com

Jim Travillo
Senior Geoscientist

1330 Post Oak Boulevard
Suite 600
Houston, Texas 77056

Direct: 713.439.6773
Main: 713.626.7766
Fax: 713.626.7775
Cell: 713.823.9332

jtravillo@davcos.com



10001 Richmond Avenue
Houston, TX 77042-4299
P.O. Box 2469 (77252-2469)
Tel: 713-689-6552
Fax: 713-689-1089
Mobile: 281-615-6827
CTutt@slb.com

Chris O. Tutt
Sales Representative
NAM Sales



WILLIAM A. WALKER, JR.
Certified Petroleum Geologist
bwalker@stalkerenergy.com

1717 West 6th Street, Ste. 230 • AUSTIN, TX 78703
2001 Krey Dr., Ste. 950 • HOUSTON, TX 77019

AUSTIN

512.457.8711
cell: 512.217.5192
fax: 512.457.8717

HOUSTON

713.522.2733
cell: 512.217.5192
fax: 713.522.2879

SEBASTIAN P. WIEDMANN
GEOSCIENTIST

WILSON PLAZA WEST
606 N. CARANCAHUA, SUITE 500
CORPUS CHRISTI, TEXAS 78401

MOBILE (361) 946-4430
swiedmann.geo@gmail.com



Dave Willis
Onshore Sales

Main: +1 713 789 7250
Direct: +1 281 781 1035
Mobile: +1 281 543 6189
Fax: +1 713 789 7201
dave.willis@iongeo.com

2105 CityWest Blvd. | Suite 900
Houston, TX 77042-2839 USA

ROLF WOODS
Exploration Geologist



500 N. Water St., Ste. 1100S — CORPUS CHRISTI, TX 78401-0236
Work: (361) 883-7464 • Fax: (361) 883-3244 • Cell: (361) 947-9200
e-mail: rwwoods@gmail.com



10001 Richmond Avenue
Houston, Texas 77042-4299
P.O. Box 2469 (77252-2469)
Tel: 713-689-2757
Fax: 713-689-1089
Mobile: 281-658-5263
CYanez@slb.com

Charles Yanez
Manager
Shared Value Optimization