

BULLETIN

Corpus Christi Geological Society



and

Coastal Bend Geophysical Society



**September
2024
ISSN 0739 5620**

Table of Contents

Officers, Committees and Chairpersons for CCGS/CBGS.....	2-3
CCGS/CBGS Joint Calendar of Meetings & Events.....	4-5
GEOGULF 2025 – Nacogdoches, TX SFA University.....	6
Membership Renewal CCGS/CBGS.....	7
Membership Kickoff – Nueces Brewing Co.....	8
CCGS President’s Letter.....	10
July 2024 Saltwater Tournament.....	11
SPE Energy Professionals Hiring Event.....	12
CBGS President’s Letter.....	13-15
Luncheon Meeting Announcement, Oct., Speaker: Julie Bloxson.....	17-18
Luncheon Meeting Announcement, Nov. Speaker: Mark Morford.....	20-22
In Search for the Corpus Christi Past written by Randy Bissell.....	26-31
CCGS Papers available for purchase at the Bureau of Economic Geology.....	32
Geo Link Post.....	33
Type Logs of South Texas Fields.....	34
Order Oil Men DVD.....	35
Wooden Rigs Iron Men.....	36
Professional Directory.....	37

CCGS/CBGS JOINT MEETING SCHEDULE 2024-2025

September 2024							October 2024							November 2024							
S	M	T	W	Th	F	S	S	M	T	W	Th	F	S	S	M	T	W	Th	F	S	
1	2	3	4	5	6	7			1	2	3	4	5							1	2
8	9	10	11	12	13	14	6	7	8	9	10	11	12	3	4	5	6	7	8	9	
15	16	17	18	19	20	21	13	14	15	16	17	18	19	10	11	12	13	14	15	16	
22	23	24	25	26	27	28	20	21	22	23	24	25	26	17	18	19	20	21	22	23	
29	30						27	28	29	30	31			24	25	26	27	28	29	30	

**2024-25 Membership Kickoff—
Nueces Brewing Co. Downtown,
5-8 p.m.**

Meeting at Joe’s Crab Shack
Downtown. 11:00 Bar, 11:45
lunch, 12:00 speaker.
Speaker: Julie Bloxson
Associate Professor at Stephen
F. Austin State University.
“Understanding the Lithium
Content Trends in the
Smackover Formation”

Meeting at Joe’s Crab Shack
Downtown. 11:00 Bar, 11:45
lunch, 12:00 speaker.
Speaker: Mark Morford,
Geophysicist (Technical Sales),
Lumina
“State-of-the Art Seismic
Processing.”

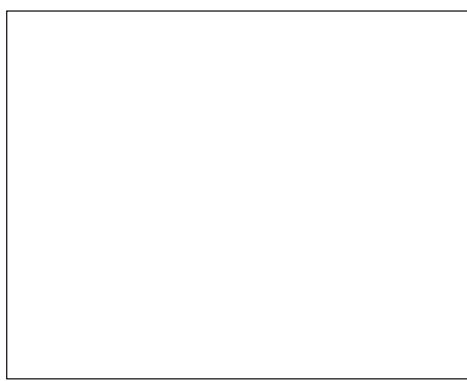
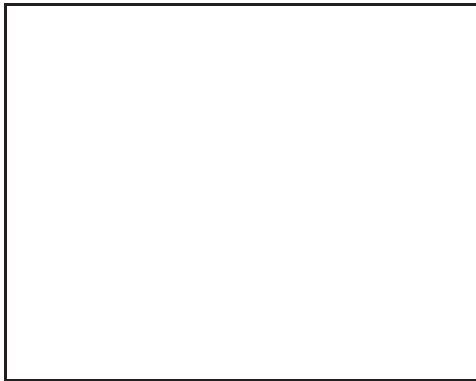
December 2024							January 2025							February 2025						
S	M	T	W	Th	F	S	S	M	T	W	Th	F	S	S	M	T	W	Th	F	S
1	2	3	4	5	6	7				1	2	3	4							1
8	9	10	11	12	13	14	5	6	7	8	9	10	11	2	3	4	5	6	7	8
15	16	17	18	19	20	21	12	13	14	15	16	17	18	9	10	11	12	13	14	15
22	23	24	25	26	27	28	19	20	21	22	23	24	25	16	17	18	19	20	21	22
29	30	31					26	27	28	29	30	31		23	24	25	26	27	28	

Meeting at Joe’s Crab Shack
Downtown. 11:00 Bar, 11:45
lunch, 12:00 speaker

Meeting at Joe’s
Crab Shack Downtown.
11:00 Bar, 11:45 lunch,
12:00 speaker

CCGS/CBGS Joint Meeting Schedule 2024-2025

March 2025							April 2025							May 2025						
S	M	T	W	Th	F	S	S	M	T	W	Th	F	S	S	M	T	W	Th	F	S
						1			1	2	3	4	5					1	2	3
2	3	4	5	6	7	8	6	7	8	9	10	11	12	4	5	6	7	8	9	10
9	10	11	12	13	14	15	13	14	15	16	17	18	19	11	12	13	14	15	16	17
16	17	18	19	20	21	22	20	21	22	23	24	25	26	18	19	20	21	22	23	24
23	24	25	26	27	28	29	27	28	29	30				25	26	27	28	29	30	31
30	31																			



Meeting at Joe's Crab Shack
downtown. 11:00 Bar, 11:45
lunch, 12:00 speaker

Calendar Of Meetings and Events

Corpus Christi Geological/Geophysical Society.....	Third Wed.—11:30a.m.
SIPES Corpus Christi Luncheons.....	Last Tues.—11:30a.m.
South Texas Geological Society Luncheons.....	Second Wed—noon San Antonio
San Antonio Geophysical Society Meetings.....	Fourth Tuesday
Austin Geological Society.....	First Monday
Houston Geological Society Luncheons.....	Last Wednesday
Central Texas Section of Society of Mining, Metallurgy & Exp.....	2 nd Tues every other month in San Antonio



CORPUS CHRISTI GEOLOGICAL SOCIETY

P.O. BOX 1068* C.C.TX. 78403

2024-2025

www.ccgeo.org

OFFICERS

President	Dennis Moore	361-946-6037	moore.dennis24@yahoo.com
Vice President	Juan Cabasos	361-289-5457	juan.cabasos@corelab.com
	Charles Benson	402-319-0064	charlesljr.@icloud.com
Secretary			
Treasurer	Sebastian Wiedmann	361-946-4430	swiedmann.geo@gmail.com
Past President			
Councilor I	Frank Cornish	361-563-9184	frank.cornish@gmail.com
Councilor II	Rick Paige	361-884-8824 Ext 415	rpaigesio2@gmail.com

AAPG DELEGATE

EDITORS

Bulletin Editor	Marian Wiedmann	361-855-2542	wiedgulf@gmail.com
Bulletin Tech. Editor	Jeanie Timmermann	361-883-1492	jeanie@industrialcorrosion.net
Web Master	Josh Pollard	361-654-3100	support@interconnect.net

GEOLOGICAL SOCIETY COMMITTEES & CHAIRPERSONS

MEMBERS PLEASE NOTE COMMITTEES CONTINUE TO FUNCTION WITHOUT A NAMED CHAIR, ALL ARE WELCOME TO ANY COMMITTEE THAT SUITES YOUR INTEREST

Advertising/Bus. Cards Arrangements	Leighton Devine Wes Gisler & Will Graham	361-882-8400 830-239-4651 361-885-0110	ldevine@suemaur.com arrangements@ccgeo.org willg@headingtonenergy.com
Continuing Education			
Education	Dawn Bissell	361-960-2151	bissells@swbell.net
Scholarship Program	Dawn Bissell	361-960-2151	bissells@swbell.net
Fishing Tournament	Leighton Devine	361-882-8400	ldevine@suemaur.com
History	OPEN (Ray Govett)	361-855-0134	ray30@hotmail.com
Membership	Dorothy Jordan Randy Bissell	361-885-0110 361-885-0113	dorothyj@headingtonenergy.com randyb@headingtonenergy.com
University Liaison	Dr. Veronica Sanchez	361593-4925	veronica.sanchez@tamuk.edu



COASTAL BEND GEOPHYSICAL SOCIETY
P.O. BOX 2741 *C.C. TX. 78403
2024-2025

OFFICERS

President	Dr. Mohamed Ahmed	361-825-3278	mohamed.ahmed@tamucc.edu
Vice President	Dr. Subbarao Yelisetti	361-593-4894	subbarao.yelisetti@tamuk.edu
Secretary/Treasurer	Charles Benson	402-319-0064	charlesjr.@icloud.com
Golf Chairman	Mark Wiley	361-902-2844-office 361-445-6712-mobile	Mark_Wiley@eogresources.com
Scholarship Chairman	Matt Hammer	361-888-4792 361-563-6137	mhammer@royalcctx.com

**Visit the geological
web site at
www.ccgeo.org**

GEOGULF 2025 - Nacogdoches, Texas SFA University

Fellow Gulf Coast Geoscientists,

Julie Bloxson, Kurt Ley, myself, and the rest of the GeoGulf2025 committee are excited to be hosting the upcoming conference in **Nacogdoches, Texas, on the Stephen F. Austin University campus on April 6-8, 2025!** As we prepare, we want to hear from GCAGS affiliated societies about their preferences regarding short courses for the coming convention.

Julie has prepared a very brief survey and has asked that I pass it along to our Society Presidents to send out to members.

So, if you would please send this out to your members this week, we would greatly appreciate it!

[Link to Survey: GeoGulf2025 Short Course Survey](#)

Thank you,

Hunter Carr

GCAGS President

Carr Resources, Inc.

Cell: 903-372-5484

Main: 903-597-2336

Hunter@CarrResources.com

110 N College Ave, Ste 502, Tyler, TX 75702

www.ccgeo.org



It is time to renew membership in the Corpus Christi Geological Society and/or the Coastal Bend Geophysical Society.

The easiest way to do that is to use our pay online website found at **<https://corpus-christi-geological-society.square.site/>**

Or use your smartphone with this QR Code





NUECES
BREWING CO.
BREWING CO.

Corpus Christi Geological Society

2024-25 Membership Kickoff

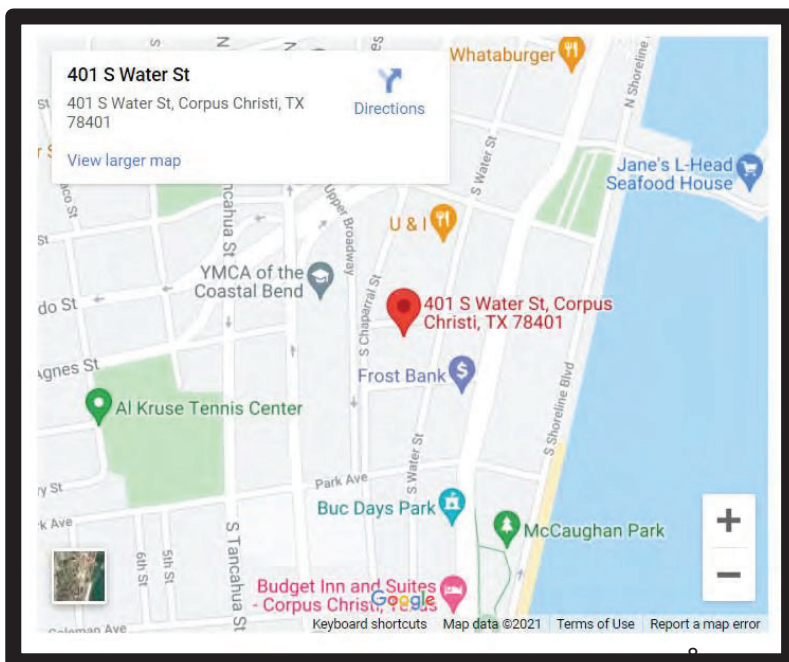
Nueces Brewing Co. Downtown

Wed. Sept. 18, 2024 – 5:00 pm

Meet & Greet/Come & Go

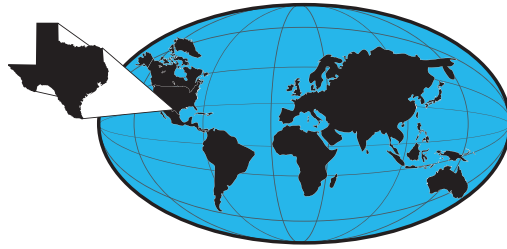
No RSVPs, BBQ, and fun snacks available

Please pay dues (still just \$25) online or at this event.



www.ccgeo.org





THUNDER EXPLORATION, INC.

Celebrating 40+ years of prospect generation and exploration in the following South Texas plays and trends.

Frio	San Miguel	Edwards
Jackson	Austin Chalk	Pearsall
Yegua	Eagle Ford	Sligo
Wilcox	Buda	Cotton Valley
Olmos	Georgetown	Smackover

Thunder continues to seek non-operated working interest participation in projects and prospects.

Thunder has participated in more than 100 new drills in the last seven years.

Walter S. Light Jr.
President/Geologist

713.823.8288

EMAIL: wthunderx@aol.com



PRESIDENT'S LETTER

Greetings to All

I would like to take a moment of your time to say THANK YOU. I am honored to act as president for the 2024-25 year of the CCGS. Last year ended with an exciting talk. Mr. Dan Pedrotti spoke about his path to becoming a successful geologist and business man. We had an excellent crowd for this informative lecture. Thank you, Dan.

There is an array of interesting talks on schedule for the coming year. First, we will start with our usual social "Kick-off". The kick-off will be held September 18, at 5:00 to 8:00pm at the Nueces Brewery.

July 26,27 featured the 14th annual CCGS fishing tournament. There was a large crowd for the captain's meeting and prize drawing. Leighton Devine was "large and in charge" of the event. This is the main scholarship fund raiser each year. I would like to thank the sponsors and fishermen for the time and donations. This event added approximately \$6000 to the scholarship fund.

We (CCGS) are still a viable source of information. The networking opportunities during meetings are limitless. The fact is that one idea leads to another, that to a third, and so through a course of time someone comes up with an idea that may change how we look at a prospect or doing business. This is why social interaction and our meetings are so important.

I would be remiss if I did not extend a big thank you and job well done to the other officers and committees that make this society run.

Please, step up and volunteer. Our society depends on YOU.

Once again, THANK YOU.

Dennis O. Moore

President CCGS 2023-25

2024 CCGS Saltwater Fishing Tournament

PLATINUM SPONSORS



GOLD SPONSORS



SILVER SPONSORS



BRONZE SPONSORS



The CCGS Fishing Tournament turned out to be a huge success this year.

The Captains meeting had 70 attendees and \$5,000.00 in door prizes were given away. We had twenty-four inshore teams, the largest number of participants ever.

Unfortunately, the weather did not cooperate for our three offshore teams. We had a nice crowd at the weigh in on Friday and paid out \$7,700 in fish pot money.

This year's tournament raised over \$6,500.00 for the CCGS.

Thank you to all our sponsors and participants.

Leighton L. Devine
Exploration Geologist
Chairman Fishing Tournament

SPE Energy Professionals Hiring Event

The Society of Petroleum Engineers – Gulf Coast Section (SPE-GCS) is pleased to inform you that it is organizing the **15th** semi-annual Energy Professionals Hiring Event for professionals of energy and upstream oil & gas disciplines.

The Fall 2024 Hiring Event will be held face-to-face on **October 10, 2024**, at the **Trini Mendenhall Community Center** located at **1414 Wirt Rd., Houston, TX 77055**.

- The Hiring Event is one of the most remarkable happenings that bring together experienced and talented professionals with energy industry employers and recruiters from various sectors, serving as the platform for open and vast-ranging employment opportunities.
- Experienced energy professionals who are members of one of the collaborating organizations can participate in both events as jobseekers by registering in advance. For more information about the event, location, time, registration, and participants, visit our website:

<https://www.spegcs.org/hiring-event/>

Registration for employers is open: <https://www.spegcs.org/events/6889/>

For more information, contact:

C. Susan Howes, PE, PHR:

President

Subsurface Consultants & Associates, LLC (SCA)

Tel: +1.713.7892444 ext. 233

Dir: +1.713.429.5740

Cell: +1.713.553.5020

Email: c.susan.howes@gmail.com



CBGS President's Letter

CBGS Board 2024-2025

- President- Dr. Mohammed Ahmed
- Vice President- Dr. Subbarao Yelisetti
- Secretary/Treasurer-Charles Benson

CBGS Presentations

Mr. Mark Morford, at Lumina Technologies, LLC will present on the State-of-the Art Seismic Processing at the November 2024 CBGS/CCGS professional luncheon.

CBGS Business

- CBGS currently has 28 active members, 2 honorary members, and 40 student members.

Academic Programs and Research Activities at TAMU-CC and TAMUK

- TAMU-CC faculty are leading an expedition in the Ross Sea off the coast of Antarctica. Dr. Rick Coffin is PI on this project, Dr. Ingo Pecher will be Chief Scientist for the TAMU-CC team, Dr. Hao Yu will lead all piston core processing, and this includes 3 students and Hannah Organ who is working on her doctorate in sediment biogeochemistry. Dr. Lindsay Prothro is working with Dr. Pecher on heat flow and sediment characteristics. This project sample sites will follow our recent seismic data retrieval and the focus is Earth warming and oil and gas loading in the Antarctic coastal waters. For more information, contact Dr. Rick Coffin at Richard.Coffin@tamucc.edu.
- Dr. Mohamed Ahmed and his graduate students at TAMU-CC submitted 6 abstracts to the 2024 American Geophysical Union (AGU) meeting:
 - Ahmed, M., Bahamil, A., Sehli, T., Alsharif, A., Alsaied, A., Zebrmawi, Y., 2024, Detection and Mapping of Sinkholes and Fissures in Saudi Arabia from Space: American Geophysical Union (AGU), Washington, DC, Dec. 2024. Submitted.
 - Ahmed, M., Abdelrehim*, R., Elshalkany*, M., Abdrabou*, M., Omar*, A., 2024, Response of the Nile River's Downstream Reservoirs to the GERD Construction: American Geophysical Union (AGU), Washington, DC, Dec. 2024. Submitted.
 - Omar*, A., Ahmed, M., 2024, Assessing the accuracy of groundwater level predictions in Texan aquifers using GRACE and machine learning models: American Geophysical Union (AGU), Washington, DC, Dec. 2024. Submitted.
 - Elshalkany*, R., Ahmed, M., 2024, Spatiotemporal Analysis of Hurricane Impacts on the Texas Gulf Coast: American Geophysical Union (AGU), Washington, DC, Dec. 2024. Submitted.
 - Abdelrehim*, R., Ahmed, M., 2024, A high-resolution 100-km electrical conductivity profile reveals the interplay between surface morphology and subsurface stratigraphy and

- hydrogeology along barrier island systems: American Geophysical Union (AGU), Washington, DC, Dec. 2024. Submitted.
- Abdrabou*, M., Ahmed, M., 2024, Mapping Bedrock Topography and Detecting Faults in Coastal Texas Using Microtremor and Gravity Measurements: American Geophysical Union (AGU), Washington, DC, Dec. 2024. Submitted.
- TAMU-CC's geology curriculum is constantly being refreshed with new courses but this academic year we are looking to add additional tracks such as Marine and Climate Geosciences, Planetary Geosciences and Biogeosciences. For additional information contact Dr. Valeriu Murgulet (Valeriu.Murgulet@tamucc.edu) at TAMU-CC.
- Texas A&M University-Kingsville (TAMU-K) started its first cohort of MS Petrophysics program in Fall 2024. If you are interested in joining this program, please contact the graduate coordinator for MS in Petrophysics, Dr. Subbarao Yelisetti at Subbarao.Yelisetti@tamuk.edu.

Student News:

- Ramadan Abdelrehim, Muhamed Elshalkany, and Amir Ismail at TAMU-CC will present their research in 2024 IMAGE meeting in Houston, TX:
 - Abdelrehim*, R., Ahmed, M., Everett, M., 2024, Impact of development on the freshwater resources in barrier islands: Implications from time-domain electromagnetic geophysical survey: International Meeting for Applied Geoscience & Energy (IMAGE), Houston, TX, Aug. 2024.
 - Elshalkany*, M., Ahmed, M., Murgulet, D., 2024, Controls of Subsurface Heterogeneity on Groundwater Discharge in Coastal Environments: International Meeting for Applied Geoscience & Energy (IMAGE), Houston, TX, Aug. 2024.
 - Ismail**, A., Ahmed, M., Elshalkany, M., Abouelmagd, A., Mansour, S., El-Nekhiely, I., Abdelfattah, M., 2024 Exploring the challenges of 2D seismic imaging in basement aquifers: A case study from Sinai, Egypt: International Meeting for Applied Geoscience & Energy (IMAGE), Houston, TX, Aug. 2024.
- Ramadan Abdelrehim at TAMU-CC has an accepted abstract for the Geological Society of America (GSA) connects 2024 meeting, November 21-25, 2024.
 - Abdelrehim, R., Ahmed, M., Omar, A., 2024, Controls of subsurface geology and surface geomorphology on barrier island's freshwater lens: inferences from geophysical and topographical surveys, GSA Connects 2024, Anaheim, CA.
- Ramadan Abdelrehim at TAMU-CC attended an intensive short course about InSAR Processing and Analysis (ISCE+) August 5-9, 2024.
- Ramadan Abdelrehim will participate with the SEG/Chevron Student Leadership Symposium (SLS) program August 24-31, 2024.
- Ramadan Abdelrehim received the Geological Society of America (GSA) 2024 research award.
- Ramadan Abdelrehim received the SEG scholarship 2024.
- Ramadan Abdelrehim received a GSA travel grant to attend the GSA connect meeting 2024.
- Ramadan Abdelrehim, Mohamed Mousa, Ahmed Omar, Yusuf Azeez, and Muhamed Elshalkany team selected to participate in the SEG EVOLVE Carbon Solutions Program, mentor-guided virtual internship with multidisciplinary teams to build foundational knowledge by integrating technical and commercial data for business decisions, a recipe for career success.

Meetings & Events

- The 2024 IMAGE meeting: <https://www.imageevent.org/>
- The 2024 AGU meeting: <https://www.agu.org/annual-meeting>
- The 2024 GSA meeting: <https://community.geosociety.org/gsa2024/home>

Mohamed Ahmed

President, CBGS

Mohamed.ahmed@tamucc.edu

SPONSORS

SUEMAUR

Experience. Expertise. Exploration.

EXPLORING SINCE 1968



539 N Carancahua St, Suite 1100, Corpus Christi, TX 78401
(361) 884-8824
www.suemaur.com



**CORPUS CHRISTI GEOLOGICAL SOCIETY
COASTAL BEND GEOPHYSICAL SOCIETY**



LUNCHEON MEETING ANNOUNCEMENT

October 16th, 2024

- Location:** Joe's Crab Shack, 444 North Shoreline Dr.,
Corpus Christi, TX 78401
- Student Sponsors:** Viper Exploration, Imagine Resources,
Mary DeMis. Thank you!
- Time:** 11:30 AM Social, Lunch follows at 11:45 AM,
Speaker at 12:00 PM
- Cost:** \$35.00 (additional \$10.00 surcharge without
reservation: NO SHOW may be billed.)
- Reservations:** Please RSVP by 11:00 AM on Monday, October
14th before the meeting!

Email: arrangements@ccgeo.org

Please note that luncheon RSVPs are a commitment to Joe's Crab Shack (Shoreline Drive) and must be paid even if you can't attend the luncheon.

SPONSORSHIP OPPORTUNITIES ARE AVAILABLE! IF YOU WOULD LIKE TO SPONSOR, PLEASE CONTACT US AT:

arrangements@ccgeo.org

Understanding the Lithium Content Trends in the Smackover Formation: Potential Influencing Factors in the Ark-La-Tex Region

Julie Bloxson

The Jurassic Smackover Formation is known as a prolific hydrocarbon reservoir in the Ark-La-Tex region since the 1920's, comprised of limestones, dolostones and mudstones deposited on a carbonate platform setting. Porous and permeable fossiliferous zones have created excellent reservoirs along the Gulf Coast, allowing for the extensive development of this reservoir. In recent investigations, substantial lithium concentrations have been identified within the Smackover oilfield brines, creating a practical application for oilfield waste by-products and introducing a novel prospective exploration target within the region. Despite its economic significance, little research has been conducted on understanding the source of the lithium in the oilfield brines. The Smackover Formation presents challenges related to reservoir heterogeneity, diagenesis, and structural complexities. The structural complexity of the Smackover Formation influences the distribution of reservoirs. Furthermore, the Smackover and the Louann Salt are intricately linked throughout their geologic history, with the salt acting as both a depositional feature and a structural influence on deposition and preservation of hydrocarbons in the Smackover. This study explores the potential influences of the lithium content within the Smackover Formation, including structural, potential rifting dynamics in the region, and its association with the Louann Salt.

Biography

Dr. Julie Bloxson is an Associate Professor at Stephen F. Austin State University, focusing subsurface geology and energy resources. She heads the East Texas Core Repository on campus, which houses numerous cores, cuttings and samples from across the state. Before coming to the university, she worked at the Ohio Geological Survey in the Energy Group, mapping salt bodies, reservoirs, and caprocks for CCUS, NGL Storage and Resource Assessment. Her current research is on salty resources in GOM and Appalachia, shale plays in Texas, and assessing East Texas Basin energy potential. All of these include core, cutting, and well log analyses, creating subsurface models through multi-variate analyses that can be regionally applied.

SPONSORS



Panex Operating, LLC

Austin Nye, Manager
Corpus Christi, Texas

Oil & Gas Consulting Services

(361) 443 2239

anye@royaloilandgas.com





**CORPUS CHRISTI GEOLOGICAL SOCIETY
COASTAL BEND GEOPHYSICAL SOCIETY**



LUNCHEON MEETING ANNOUNCEMENT

November 20th, 2024

- Location:** Joe's Crab Shack, 444 North Shoreline Dr.,
Corpus Christi, TX 78401
- Student Sponsors:** Viper Exploration, Imagine Resources,
Mary DeMis. Thank you!
- Time:** 11:30 AM Social, Lunch follows at 11:45 AM,
Speaker at 12:00 PM
- Cost:** \$35.00 (additional \$10.00 surcharge without
reservation: NO SHOW may be billed.)
- Reservations:** Please RSVP by 11:00 AM on Monday,
November 18th before the meeting!

Email: arrangements@ccgeo.org

Please note that luncheon RSVPs are a commitment to Joe's Crab Shack (Shoreline Drive) and must be paid even if you can't attend the luncheon.

SPONSORSHIP OPPORTUNITIES ARE AVAILABLE! IF YOU WOULD LIKE TO SPONSOR, PLEASE CONTACT US AT:

arrangements@ccgeo.org



Mark Morford: Geophysicist (Technical Sales), Lumina

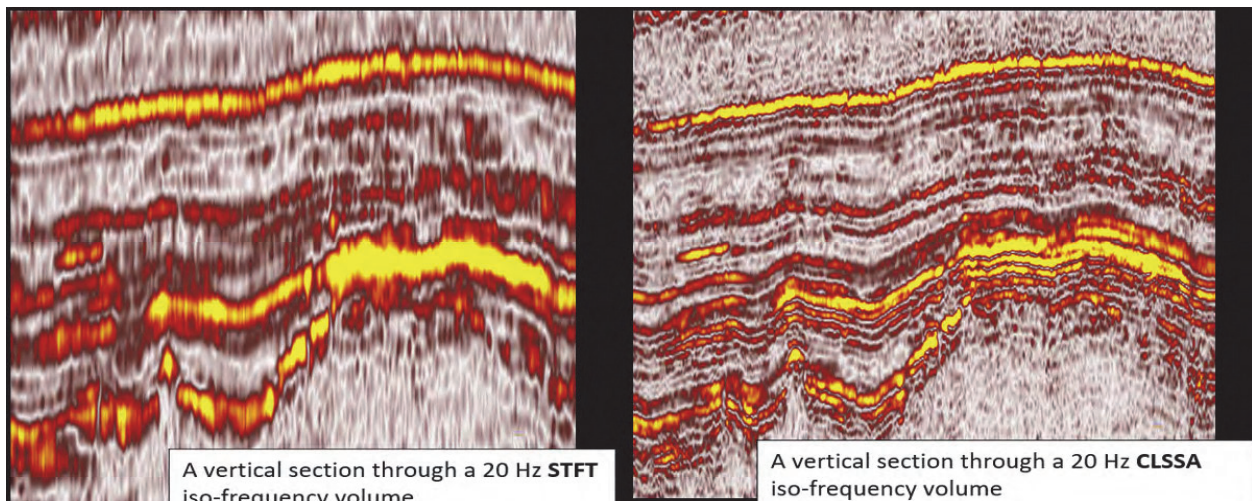
Using Bandwidth Extension and Phase Information as an Added Tool in Seismic Interpretation

Seismic data contains information that is not always used in the interpretation and Characterization. Using seismic spectral analysis techniques as a foundation, it is possible to delve deep into seismic data, extracting valuable insights about subsurface structures and properties. This proves invaluable in oil and gas exploration reservoir characterization, and geological studies.

Abstract

Two techniques will be discussed in this presentation. Sparse layer inversion uses the spectral decomposition results to enhance the seismic bandwidth in order to resolve thin beds and reservoir variations not visible in conventionally processed data. Phase decomposition, which is not a phase rotation but more similar to the spectral decomposition, produces results that will identify anomalous amplitudes due to porosity or fluid changes specifically in thin beds.

These processed can be applied pre or post stack and on 2d or 3d data.



High definition Spectral Decomposition can aid in interpretation

Biography

Mark received a Bachelor of Science in Geophysics from Texas A&M and a Master of Science from the University of Houston in Geophysics.

He has extensive geophysics experience in the areas of seismic interpretation, velocity model building and depth imaging for Western Geophysical, Paradigm, PEMEX , Shell and Lumina mainly in Mexico, Venezuela and the United States. He also has worked for 4 years doing applied geomechanics studies on pore pressure prediction and wellbore stability projects for designing well programs.

Currently Mark is with Lumina Geophysical as a Technical Sales Specialist.

Mark is also President of the **Asociación Mexicana de Geofísicos de Exploración (AMGE) – Houston Delegation**, an SEG associated organization for geoscientists/engineers interested in Mexico and in close contact with the members in Mexico.

Percussion Sidewall Analysis



Convenient Gulf Coast locations
Accelerate your data delivery with 24 hr access to any of our 3 Gulf Coast labs.



Fast reporting times (hours, not days or weeks) Percussion sidewall core analysis within hours of receipt.



API estimates of oil quality
Via refractive index. Indicator of gas presence via API combustible gas detector also determined.



Strategic Solutions
log modeling, data analytics, completion and drilling recommendations.



Measured properties Saturations, porosity and bulk densities directly measured. Empirically derived permeability.



Advanced Rock Typing Expert guided machine learning based analog search for routine and advanced petrophysical properties.



LamSpec proprietary model from LPSA, including Cap Pressure Simulation, Lamination-Specific analysis, and enhanced permeabilities.

HOUSTON: 713.328.2121 | LAFAYETTE: 337.8637.8616 | CORPUS CHRISTI: 361.289.5457

SPONSORS

NEI



Nueces Energy, Inc.

P.O. Box 252

Corpus Christi, Texas 78403

Office: (361) 884-0435

Fax: (361)-654-1436

www.nuecesland.com

Nueces Energy, Inc. is a complete land services company in the business of providing professional landmen and project management to various energy related jobs primarily in the oil and gas industry.

With over 30 years of industry experience, we specialize in determining surface and subsurface ownership and negotiating and acquiring contracts, rights of way agreements, and easements to provide our clients with the legal right to explore and develop oil and gas resources. We provide a full service land company capable of managing any project no matter how large or small.

Jonathan N. Halepeska, CPL, REALTOR® and ROW Agent



P.O. Box 98, Victoria, Texas 77902

301 S. Bridge St., Suite #1, Victoria, Texas 77901

(361) 550-4193

jnhalepeska@gmail.com

JOIN!



The Desk & Derrick Club of Corpus Christi is a dynamic organization that promotes the education of the petroleum, energy and allied industries and advances the professional

Member Benefits:

- Learn from energy industry experts.
- Network with energy industry leaders and colleagues.
- Attend regional and national meetings.
- Receive critical updates and information about the energy industry.
- Enhance communication and leadership skills.
- Make friends for life!

For more information about the Desk & Derrick Club of Corpus Christi and to learn about member eligibility, go to www.addc.org or contact Jena Nelson at 361-844-6726 or email at jena@amshore.com

The Desk & Derrick Club of Corpus Christi is a proud affiliate of the Association of Desk And Derrick Clubs, www.addc.org

In Search of the Historic Corpus Christi Pass

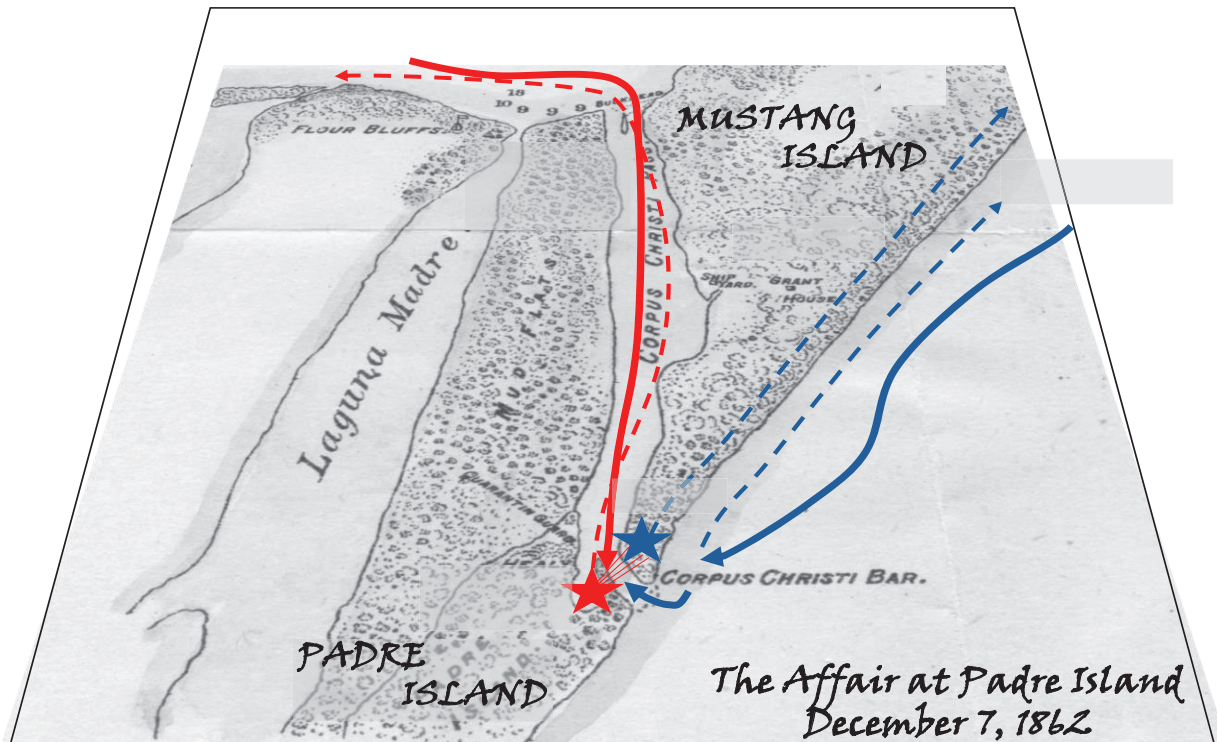
By Randy Bissell

An “Affair at Padre Island” – December 7, 1862

On a crisp, clear December morning in 1862, Captain Wilkes of the Confederate States of America and his mix of about ten officers, sailors, and foot soldiers painstakingly sounded the opening of the Corpus Christi Pass in their small ship, the Queen of the Bay. This vital coastal inlet connected Corpus Christi Bay with the Gulf of Mexico. *Back to that story after some introduction...*

Finding the Historic Corpus Christi Pass

According to old maps, the “historic” Corpus Christi Pass extended south-to-north along the back side of Mustang Island, about six miles in length and with an average depth of 10 feet. The Corpus Christi Bar at today’s Whitecap Beach was the mouth of the channel into the Gulf of Mexico. The bar reduced the water depth to three feet, making navigation treacherous. Strong tidal currents within the channel and the Gulf winds, swells, and crashing waves compounded the reliability and safety of this critical supply route to the rebel-held bayside town of Corpus Christi. Regular soundings were required to ensure navigability.

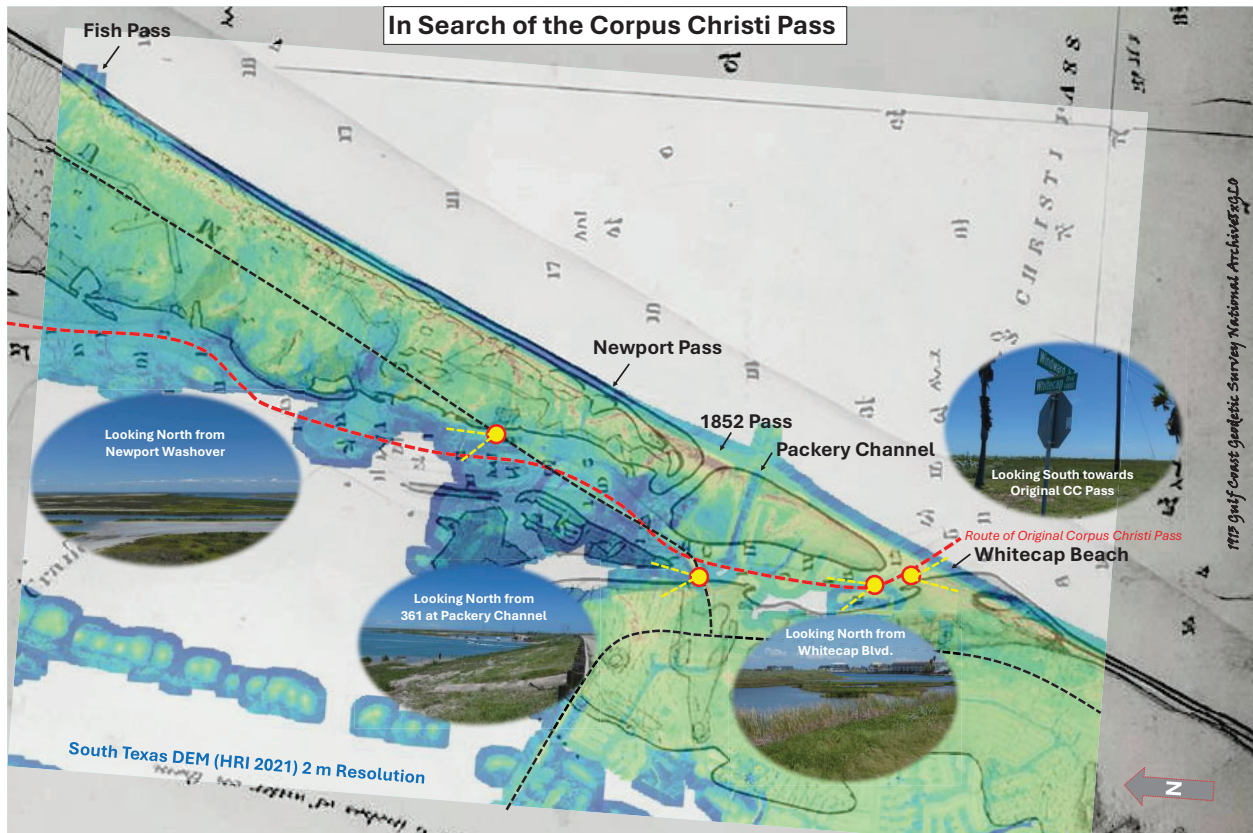


Sketch Map of Corpus Christi Pass – circa 1868 – Courtesy of Jim Moloney. Annotations of landmarks related to the “Affair at Padre Island” skirmish of 1862 have been added.

The Corpus Christi Pass tidal channel varied in width from 30 to over 100 yards along its length. Padre Island’s high dunes rose above the steep south bank of the pass. In contrast, looking north, Mustang Island was a broad, low sand plain owing to the channel’s migration southward over time.

Where is the Pass Today?

The historic Corpus Christi Pass has been lost to time as Mustang Island and Padre Island have been reshaped by human engineering in the last 100 years. The original course of the long tidal inlet is obscured by development today.



Harte Research Institute Digital Elevation Model map with US Geodetic Survey map from 1913 overlay and photos along the trace of the original Corpus Christi Pass. The historical trace of the Pass is shown as the red line. Photos: August 2024.

Parts and pieces of the old Pass exist as abbreviated waterways but more often as shallow wetlands and tidal flats. In a desire for transportation efficiency, Packery Channel, the Mustang Island Fish Pass, and the modern Aransas Pass were cut directly across the barrier island complex perpendicular to the shoreline. Similarly, intense hurricanes tend to open and reopen temporary cuts at Newport Pass and other weak points along southern Mustang Island. Recent storm washover lobes have filled portions of the original Corpus Christi Pass.

Tracing the Channel

Whitecap Beach is a popular tourist site on Padre Island today. It is difficult to imagine this strand as the mouth of the original inlet into Corpus Christi Bay. The elevated berm of Whitecap Boulevard cuts across the old channel at Windward Road. The adjacent waterway called “Lake Padre” occupies the old channel to the north. A wetland behind recently formed dunes has filled in the old

pass to the south. The trace of the original pass can also be observed north and south of the Highway 361 bridge over Packery Channel. Not following much of the modern Packery Channel, the old pass trends northward, across Zahn Road and towards “Packery Flats” and the Island of the Son Methodist Church on TX 361. From the Church, look north towards Corpus Christi Bay. From above, the remnant of the old pass is also easily spotted on Google Earth images and even better using the published Digital Elevation Model available from the Harte Research Institute.

Surprise at Sunrise

Back to the Affair... That early morning, on December 7, 1862, Captain Wilkes was surprised to see Union boats, a three-masted tall ship or barque, the USS Arthur, cruising the open Gulf towards the Pass and their anchored position. The Confederate troops landed and went to the high dunes on Padre Island to observe the Union ship dealing with contrary winds and seas as it navigated the bars at the mouth of the pass in pursuit of the rebels. The Confederates quickly returned to the Queen to pull anchor and make their way towards Corpus Christi. Realizing that twenty-two well-armed Yankee soldiers were approaching rapidly in two small launches, the rebel sailors and soldiers ran the Queen aground, landing on Padre Island and taking a defensive position in the high dunes on the south side of the channel. From their elevated and advantageous position, the rebels fired down upon the Union soldiers still in their launches in the middle of the channel.



Thomas J. Noakes painting of the Fight with the Yankees at Corpus Christi Pass, dated April 10, 1863 - from the digital collection of Mr. Jim Moloney. Used with permission

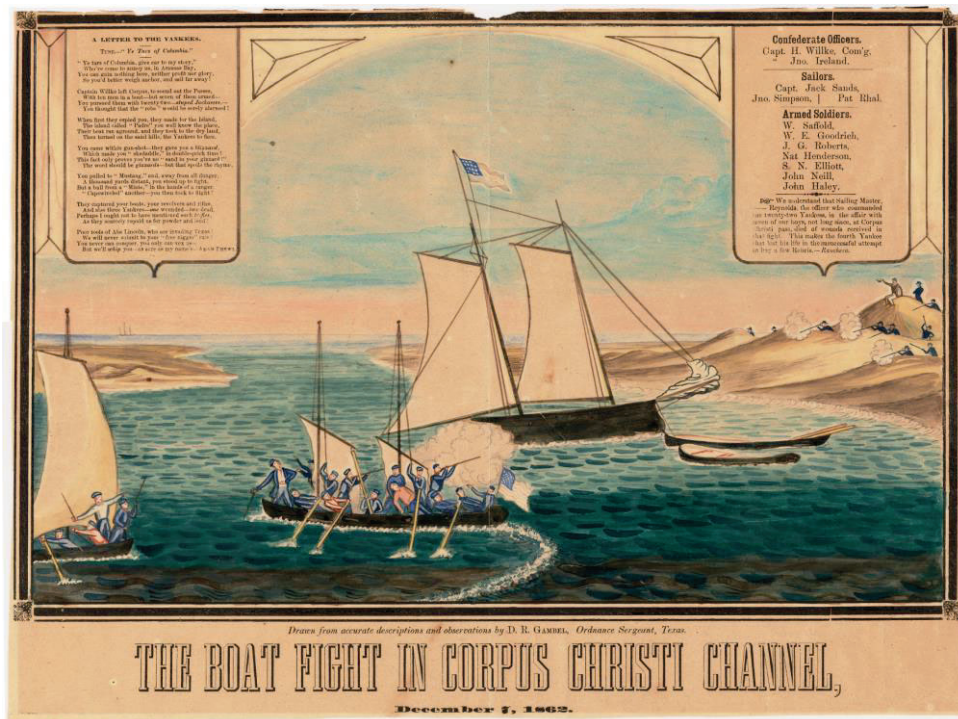
Sitting Ducks

The hail of rebel mini balls found their marks, with two Union soldiers downed in the first volley. The soldiers trapped in their small boats within the pass returned fire without success. Realizing their defenselessness, they landed on the north side of the pass, Mustang Island, running inland and

continuing to return fire. The upland position and accuracy of the Confederate rifles held such an advantage that their shot dropped another Union soldier on the beach. The rebel fire forced the remaining Yankees farther north into the low hills several hundred yards away. Adding insult to their losses, the Union boats haphazardly beached on the Mustang side of the pass drifted across the channel to the rebel-held Padre Island, stranding the dead, wounded, and dispirited soldiers on Mustang Island, resulting in their humiliating march to Port Aransas, the closest Union stronghold.

Celebrating a Not-so-Small Victory

The David Gambel painting commemorates in picture and taunting poetry the Confederate victory of the Union at the “Affair at Padre Island” on December 7, 1862. The skirmish resulted in the death of at least three Union soldiers and the injury of several others. The rebels seized the two launches, which included three soldiers, two dead and one severely injured, along with many coveted supplies and weapons.



David Gambel painting of the Boat Fight at Corpus Christi Channel, December 7, 1862 – from the digital collection of Mr. Jim Moloney. Used with permission

Remembering The Affair

There are no Historical Markers or commemorative plaques on Mustang or Padre Islands remembering the Affair. There are no memorials to those Union soldiers who were injured or lost their lives in the skirmish: recorded were Ensign A. H. Reynolds, Thomas Mollman, John Carey, William Nicholson, Benjamin Cowen, Peter Baxter, and the men found in the launches seized by the Confederates. There are the two competing paintings of the Affair, one by David R. Gambel, the other by Thomas J. Noakes. Both are from the southern perspective to enshrine the rebel victory. Formal reports were written by both sides at the time of the skirmish – one penned by Master Amos

Johnson on behalf of the Union Rear-Admiral D. G. Farragut of the Western Gulf Blocking Brigade, the other by Confederate Major H. Wilke of the C.S.A., the captain of the Queen of the Bay. These accounts were published by the Island Moon several years ago.

The Poem by Adam Phewl

A LETTER TO THE YANKEES

"Ye tars of Columbia, give ear to my story,"

Who've come to annoy us in Aransas Bay,
You can gain nothing here, neither profit nor glory,
So you'd better weigh anchor and sail far away!

Captain Willke left Corpus to sound out the Passes,
With ten men in a boat—but seven of them armed—
You pursued them with twenty-two—*stupid Jackasses* -
You thought that the "rebs" would be sorely alarmed!

When first they espied you, they made for the Island,
The island called "Padre" you well know the place,
Their boat ran aground, and they took to the dry land,
Then turned on the sand hills, the Yankees to face.

You came within gun-shot—they gave you a *blizzard*,
Which made you "skedaddle" in double-quick time!
This fact only proves you've no "sand in your gizzard!"
The word should be *gizzards* - but that spoils the rhyme.

You pulled to "Mustang," and, away from all danger,
A thousand yards distant, you stood up to fight,
But a ball from a "Minie," in the hands of a ranger,
"Cap-swiveled" another — you then took to flight!

They captured your boats, your revolvers and rifles,
And also three Yankees — *one* wounded — *two* dead,
Perhaps I ought not to have mentioned such trifles,
As they scarcely repaid us for powder and lead!

Poor tools of Abe Lincoln, who are invading Texas!
We will never submit to your "**Northerner's*" rule!
You never can conquer; you only can vex us—
But we'll whip you--as sure as my name's-- *ADAM PHEWL*

**Apologies for 2024-required edits...RB*

Closing. A visit to Whitecap Beach is an opportunity to walk over our closest Civil War battlefield and recall the struggles and hardships of that ugly war. Like so much Texas history, the landscape is a character in the story. These dunes, passes, islands, and the sea – the remnants of that date can still be experienced in the field...until man reforms this untamed, original, and natural part of Texas into his sterilized version of beachfront development with history lost.

Sources

- Bissell, R., 2024, Influences of Recent Mustang Island Processes on Subsurface Architecture Observed in Shallow GPR Profiles. Unpublished research essay in development.
- Moloney, J., 2024, CC Pass Image Circa 1868. Private digital collection.
- Moloney, J., 2024, The Boat Fight in Corpus Christi Channel December 7, 1862, painting by David R. Gambel. (Undated) Private digital collection.
- Moloney, J., 2024, Fight with the Yankees at Corpus Christi Pass, painting by Thomas J. Noakes. Published April 10, 1863. Private digital collection.
- Moloney, J., 2024, A little Island History: The Battle of Whitecap Beach containing transcripts of the reports of Amos Johnson, USA, and H. Wilke, CSA, 1862. (undated) Island Moon article digitally scanned. Private digital collection.
- Pewhl, A., ca. 1862, A Letter to the Yankees, Inset poem on the David R. Gambel painting (edited). Moloney private digital collection.
- Su, L., Subedee, M., Dotson, M., Gibeaut, J., Lupher, B., Reisinger, A., and Bezore, R., 2021, 2-meter Topographic Lidar Digital Elevation Model (DEM) of the Lower Texas Coast. Harte Research Institute for Gulf of Mexico Studies Coastal and Marine Geospatial Sciences. Retrieved from: <https://data.griidc.org/data/HI.x833.000:0010>. DOI: <https://doi.org/10.7266/Z7WG9EGN>
- Texas General Land Office, 2024, Corpus Christi Bay, Padre Island, Mustang Island, Laguna de la Madre, King and Kenedy's Pasture Map 73047. General Map Collection. Gulf of Mexico. Retrieved from: https://historictexasmaps.com/wmedia_w1800h1800/maps/73047.tif.jpg
- Texas General Land Office, 2024, Corpus Christi Bay, Padre Island, Mustang Island, Laguna de la Madre, King and Kenedy's Pasture Map 73040. General Map Collection. Gulf of Mexico. Retrieved from: https://historictexasmaps.com/wmedia_w1800h1800/maps/73040.tif.jpg
- Texas General Land Office, 2024, United States – Gulf Coast – Aransas and Corpus Christi Bay with the coast to latitude 27°12' Texas Map 72794. U. S. Coast and Geodetic Survey published 1913. General Map Collection. Gulf of Mexico. Retrieved from: https://historictexasmaps.com/wmedia_w1800h1800/maps/72794.tif.jpg
- Watson, R., 2024, Washover Channels Between Padre & Mustang Islands Including Packery Channel, Newport Pass and Corpus Christi Pass. Photos from the author used with permission. Retrieved from <http://texascoastalgeology.com/passes/mustangwashover.html>

Corpus Christi Geological Society Papers available for purchase at the Texas Bureau of Economic Geology

Note: Publication codes are hyperlinked to their online listing in [The Bureau Store](http://begstore.beg.utexas.edu/store/) (<http://begstore.beg.utexas.edu/store/>).

Cretaceous-Wilcox-Frio Symposia, D. B. Clutterbuck, Editor, 41 p., 1962.
[CCGS 002S](#) \$15.00

Type Logs of South Texas Fields, Vol. I, Frio Trend. Compiled by Don Kling. Includes 134 fields. 158 p., 1972. Ring binder.
[CCGS 015TL](#) \$25.00

Type Logs of South Texas Fields, Vol. II, Wilcox (Eocene) Trend. Compiled by M. A. Wolbrink. 98 p., 1979. Ring binder.
[CCGS 016TL](#) \$25.00

Field Trip Guidebooks

South Texas Uranium. J. L. Cowdrey, Editor. 62 p., 1968.
[CCGS 102G](#) \$12.00

Hidalgo Canyon and La Popa Valley, Nuevo Leon, Mexico. CCGS 1970 Spring Field Conference. 78 p., 1970.
[CCGS 103G](#) \$8.00

Padre Island National Seashore Field Guide. R. N. Tench and W. D. Hodgson, Editors. 61 p., 1972.
[CCGS 104G](#) \$5.00

Triple Energy Field Trip, Uranium, Coal, Gas—Duval, Webb & Zapata Counties, Texas. George Faga, Editor. 24 p., 1975.
[CCGS 105G](#) \$10.00

Minas de Golondrinas and Minas Rancherías, Mexico. Robert Manson and Barbara Beynon, Editors. 48 p. plus illus., 1978.
[CCGS 106G](#) \$15.00

Portrero Garcia and Huasteca Canyon, Northeastern Mexico. Barbara Beynon and J. L. Russell, Editors. 46 p., 1979.
[CCGS 107G](#) \$15.00

Modern Depositional Environments of Sands in South Texas. C. E. Stelling and J. L. Russell, Editors. 64 p., 1981.
[CCGS 108G](#) \$15.00

Geology of Peregrina & Novillo Canyons, Ciudad Victoria, Mexico, J. L. Russell, Ed., 23 p. plus geologic map and cross section, 1981.
[CCGS 109G](#) \$10.00

Geology of the Llano Uplift, Central Texas, and Geological Features in the Uvalde Area. Corpus Christi Geological Society Annual Spring Field Conference, May 7-9, 1982. Various paginated. 115 p., 53 p.
[CCGS 110G](#) \$15.00

Structure and Mesozoic Stratigraphy of Northeast Mexico, prepared by numerous authors, variously paginated. 76 p., 38 p., 1984.
[CCGS 111G](#) \$15.00

Geology of the Big Bend National Park, Texas, by C. A. Berkebile. 26 p., 1984.
[CCGS 112G](#) \$12.00

GEO LINK POST

<http://www.lib.utexas.edu/books/landsapes/index.php> Free service. Rare, fragile, hard-to-find, public domain documents covering various topics about the landscape of Texas. Includes the Texas Geological Survey from 1887 until 1894.

USGS TAPESTRY OF TIME AND TERRAIN <http://tapestry.usgs.gov> The CCGS is donating to all of the 5th and 6th grade schools in the Coastal Bend. Check it out--it is a spectacular map. You might want to frame one for your own office. The one in my office has glass and a metal frame, and It cost \$400 and it does not look as good as the ones we are giving to the schools.

FREE TEXAS TOPOS'S <http://www.tnris.state.tx.us/digital.htm> these are TIFF files from your state government that can be downloaded and printed. You can ad them to SMT by converting them first in Globalmapper. Other digital data as well.

FREE NATIONAL TOPO'S [http://store.usgs.gov/b2c_usgs/b2c/start/\(xcm=r3standardpitrex_prd\)/.do](http://store.usgs.gov/b2c_usgs/b2c/start/(xcm=r3standardpitrex_prd)/.do) go to this webpage and look on the extreme right side to the box titled TOPO MAPS DOWNLOAD TOPO MAPS FREE.

<http://www.geographynetwork.com/> Go here and try their top 5 map services. My favorite is 'USGS Elevation Date.' Zoom in on your favorite places and see great shaded relief images. One of my favorites is the Great Sand Dunes National Park in south central Colorado. Nice Dunes.

<http://antwrp.gsfc.nasa.gov/apod/asropix.html> Astronomy picture of the day--awesome. I click this page everyday.

<http://www.spacimaging.com/gallery/ioweek/iow.htm> Amazing satellite images. Check out the gallery.

<http://www.ngdc.noaa.gov/seg/topo/globegal.shtml> More great maps to share with kids and students.

www.ccgeo.org Don't forget we have our own we page.

<http://terra.nasa.gov/gallery/> Great satellite images of Earth.

www.ermaper.com They have a great free downloadable viewer for TIFF and other graphic files called ER Viewer.

<http://terrasrver.com> Go here to download free aerial photo images that can be plotted under your digital land and well data. Images down to 1 meter resolution, searchable by Lat Long coordinate. Useful for resolving well location questions.

TYPE LOGS OF SOUTH TEXAS FIELDS by Corpus Christi Geological Society

NEW (2019) TYPE LOGS IN RED;

lost now found

ARANSAS COUNTY

Aransas Pass/McCampbell Deep
Bartell Pass
Blackjack
Burgentine Lake
Copano Bay, South
Estes Cove
Fulton Beach
Goose Island
Half Moon Reef
Nine Mile Point
Rockport, West
St. Charles
Tally Island
Tract 831-G.O.M. (offshore)
Virginia

BEE COUNTY

Caesar
Mosca
Nomanna
Orangedale(2)
Ray-Wilcox
San Domingo

Tulsita Wilcox
Strauch_Wilcox

BROOKS COUNTY

Ann Mag
Boedecker
Cage Ranch
Encintas
ERF
Gyp Hill
Gyp Hill West
Loma Blanca
Mariposa
Mills Bennett
Pita
Tio Ayola
Tres Encinos

CALHOUN COUNTY

Appling
Coloma Creek, North
Heyser
Lavaca Bay
Long Mott
Magnolia Beach
Mosquito Point
Olivia
Panther Reef
Powderhorn
Seadrift, N.W.
Steamboat Pass
Webb Point
S.E. Zoller
CAMERON COUNTY
Holly Beach
Luffles
San Martin (2)
Three Islands, East

Vista Del Mar

COLORADO COUNTY

E. Ramsey
Graceland N. Fault Blk
Graceland S. Fault Blk

DEWITT COUNTY

Anna Barre
Cook
Nordheim

Smith Creek
Warmesley
Yorktown, South

DUVAL COUNTY

DCR-49

Four Seasons
Good Friday
Hagist Ranch

Herbst
Loma Novia
Petrox

Seven Sisters
Seventy Six, South
Starr Bright, West

GOLIAD COUNTY

Berclair
North Blanconia
Bombs
Boyce
Cabeza Creek, South
Goliad, West

St Armo

Terrell Point

HIDALGO COUNTY

Alamo/Donna
Donna
Edinburg, West
Flores-Jeffress
Foy
Hidalgo

LA Blanca
McAllen & Pharr
McAllen Ranch

Mercedes
Monte Christo, North
Penitas

San Fordyce
San Carlos
San Salvador

S. Santallana
Shary
Tabasco

Weslaco, North
Weslaco, South

JACKSON COUNTY

Carancahua Creek
Francitas
Ganado & Ganado Deep
LaWard, North
Little Kentucky

Maurbro

StewartSwan Lake

Swan Lake, East
Texana, North
West Ranch

JIM HOGG COUNTY

Chaparosa
Thompsonville,N.E.

JIM WELLS COUNTY

Freeborn
Hoelscher
Palito Blanco
Wade City

KARNES COUNTY

Burnell
Coy City
Person

Runge

KENEDY COUNTY

Candelaria
Julian
Julian, North
Laguna Madre

Rita
Stillman

KLEBERG COUNTY

Alazan
Alazan, North
Big Caesar
Borregos

Chevron (offshore)
Laguna Larga

Seeligson
Sprint (offshore)

LA SALLE COUNTY

Pearsall

HAWKVILLE:EAGLEFORD

LAVACA COUNTY

Hallettsville
Hope
Southwest Speaks
Southwest Speaks Deep

LIVE OAK COUNTY

Atkinson
Braslau
Chapa
Clayton
Dunn
Harris
Houdman
Kittie West-Salt Creek
Lucille
Sierra Vista
Tom Lyne
White Creek
White Creek, East

MATAGORDA COUNTY

Collegeport

MCMULLEN COUNTY

Arnold-Weldon
Brazil
Devil's Waterhole

Hostetter
Hostetter, North

NUECES COUNTY

Agua Dulce (3)
Arnold-David
Arnold-David, North
Baldwin Deep
Calallen
Chapman Ranch
Corpus Christi, N.W.
Corpus Christi West C.C.
Encinal Channel
Flour Bluff/Flour Bluff, East
GOM St 9045(offshore)

Indian Point
Mustang Island
Mustang Island, West
Mustang Island St.
889S(offshore)

Nueces Bay/Nueces Bay
West

Perro Rojo

Pita Island
Ramada
Redfish Bay

Riverside
Riverside, South
Saxet

Shield
Stedman Island
Turkey Creek

REFUGIO COUNTY

Bonnieview/Packery Flats
Greta
La Rosa
Lake Pasture

Refugio, New
Tom O'Connor

SAN PATRICIO COUNTY

Angelita East
Commonwealth
Encino
Enos Cooper

Geronimo
Harvey
Hiberia
Hodges

Mathis, East
McC Campbell Deep/Aransas Pass
Midway

Midway, North

Odem

Plymouth

Portilla (2)

Taft

Taft, East

White Point, East

STARR COUNTY

El Tanque

Garcia

Hinde

La Reforma, S.W.

Lyda

Ricaby

Rincon

Rincon, North

Ross

San Roman

Sun

Yturria

VICTORIA COUNTY

Helen Gohike, S.W.

Keeran, North

Marcado Creek

McFaddin

Meyersville

Placedo

WEBB COUNTY

Aquilares/Glen Martin

Big Cowboy

Bruni, S.E.

Cabezon

Carr Lobo

Davis

Hirsch

Juanita

Las Tiendas

Nicholson

O'Ham

Olmitos

Tom Walsh

WHARTON COUNTY

Black Owl

WILLACY COUNTY

Chile Vieja

La Sal Vieja

Paso Real

Tenerias

Willamar

ZAPATA COUNTY

Benavides

Davis, South

Jennings/Jennings, West

Lopeno

M&F

Pok-A-Dot

ZAVALA COUNTY

El Bano

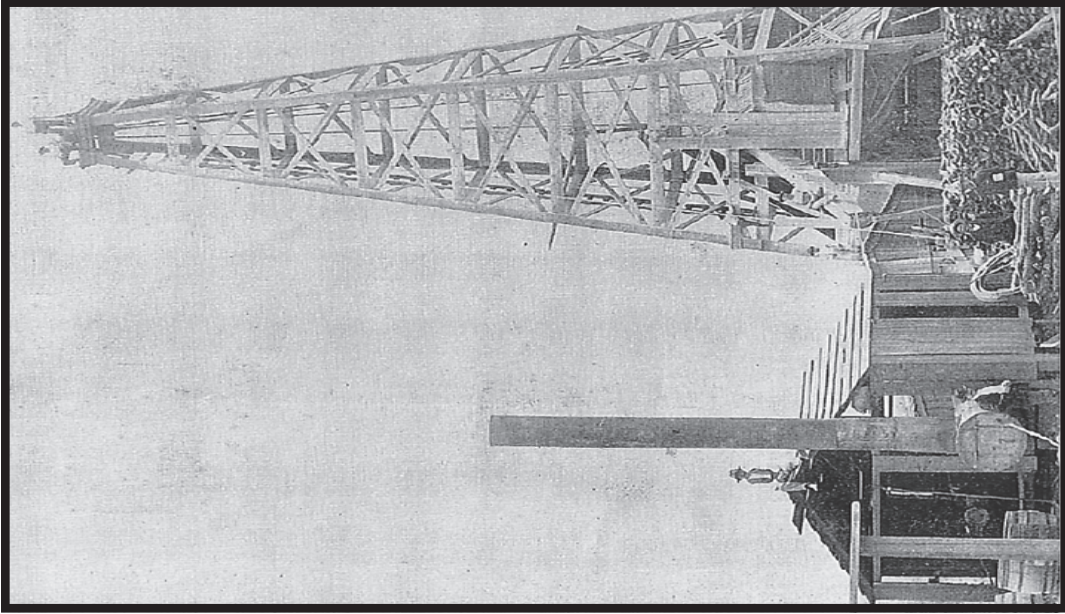
Call Coastal Bend Geological Library, Letty: 361-883-2736
1 log -- \$10 each, 5-10 logs \$9 each and 10 + logs \$8.00 each -- plus postage

OIL MEN
TALES FROM THE SOUTH TEXAS OIL PATCH
DVD
MEMBER PRICE \$25
NON-MEMBER \$30



To Order DVD
Sebastian Wiedmann
swiedmann.geo@gmail.com
If mailed add \$5.00

Corpus Christi Geological Society
Sebastian Wiedmann--
swiedmann.geo@gmail.com



Wooden Rigs—Iron Men

The Story of Oil & Gas in South
Texas

By Bill & Marjorie K. Walraven

Published by the

Corpus Christi Geological Society

Order Form **SALE \$55.00**

Mail order form for Wooden rigs-Iron Men. The price is \$75 per copy,
if mailed \$65 per copy.

Name _____

Address _____

City, State, Zip _____

No. of books _____

Amount enclosed _____

Send to Corpus Christi Geological Society Book Orders
4425 Driftwood PL..

Corpus Christi, TX. 78411 Tax exempt# if applicable _____



Dawn S. Bissell
Geoscientist

Advent Geoscience Consulting, LLC
Corpus Christi, TX 78411

Phone: 361-960-2151
Email: bissells@swbell.net

MUD LOGGING SERVICE



Since 1981

MIKE BULLARD

(361) 221-9717 Office
(361) 522-1245 Cell
E-Mail md_bullard@sbcglobal.net

(361) 211-9715 Fax
P.O. Box 1011
Kingsville, Tx 78363

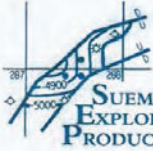
Imagine Resources, LLC

Finding South Texas Hydrocarbons
since 1982

Frank G Cornish

President/Consultant
555 N Carancahua, Ste 1230
Corpus Christi, Tx 78401

TEL | 361-563-9184 EMAIL | Frank.cornish@gmail.com
WEB | <http://imagine-resourcesllc.com/>



LEIGHTON DEVINE
Exploration Manager

D: (361) 884-8824 ext. 412 555 N. Carancahua, Suite 1230
C: (361) 510-8872 Corpus Christi, Texas 78401
ldevine@sueaur.com www.sueaur.com

Tommy Dubois
Petroleum Geology

242 Bayside Drive
Corpus Christi, Tx. 78411

tdubois@yahoo.com
361-215-0223



FRONTERA EXPLORATION CONSULTANTS

*Geological and Geophysical Interpretation
Regional Geoscience Investigations*

THOMAS E. EWING, PH.D.
AAPG CPG #4538; Texas Lic. Geol. #1320

19240 Redland Road, Suite 250, San Antonio TX 78259
(210) 410-9587; (210) 824-6423 FAX
teewing@fronteraexploration.com

Since
1982

MATTHEW FRANEY
Consulting Geologist

AAPG CPG #6342

VENTEX OIL & GAS, INC.
545 N. Upper Broadway, Suite 403 361-563-6327
Corpus Christi, TX 78401 mfraney57@att.net

COWBOY
EXPLORATION

www.sellnonop.com

Buying Producing Non-Op WI Nationwide
Cameron Goodwin, Managing Partner
512-717-4491
Cameron@CowboyExploration.com

Robert Graham
361-774-3635

RGR ENERGY, LLC

Oil & Gas Exploration and Development
P. O. Box 1843, Corpus Christi, TX 78403
rgrexploration@gmail.com



HART EXPLORATION, LLC.

RICK HART
Geologist / Owner

P.O. Box 3576 Cell: 512-626-3053
Bandera, Texas 78003 Email: hartexploration@aol.com



THUNDER EXPLORATION, INC.

WALTER S. LIGHT, JR.
PRESIDENT
PETROLEUM GEOLOGIST

US MOBILE: +713 823 8288 P.O. BOX 541674
EMAIL: wlightnders@aol.com HOUSTON, TEXAS 77254-1674



An Eye on Your Data

DENNIS MOORE

Log Analyst

Wireline Supervision

(361) 946-6037



Jeff Osborn
Geologist

Herradura Petroleum, Inc.
14493 SPID, Ste A, #539
Corpus Christi, TX 78418

361-637-2349 jeff@herradurapetroleum.com

First Rock, Inc.

RGR Production

First Rock I, LLC

Gregg Robertson

710 Buffalo St. Ste 402
Corpus Christi, TX 78401
361-884-0791

361-215-5559 - Cell
210-260-0300 - Cell
361-884-0863 - Fax
firstrockinc@msn.com

SEBASTIAN P. WIEDMANN
GEOSCIENTIST

WILSON PLAZA WEST
606 N. CARANCAHUA, SUITE 500
CORPUS CHRISTI, TEXAS 78401

MOBILE (361) 946-4430
swiedmann.geo@gmail.com

YOUR CARD COULD BE HERE!
\$30 FOR 5 ISSUES. PRICES PRO-RATED. EMAIL LEIGHTON DEVINE AT
LDEVINE@SUEMAUR.COM