

BULLETIN

Corpus Christi Geological Society



and

Coastal Bend Geophysical Society



**March
2025
ISSN 0739 5620**

Table of Contents

Officers, Committees and Chairpersons for CCGS/CBGS.....	2-3
CCGS/CBGS Joint Calendar of Meetings & Events.....	4-5
Membership Renewal CCGS/CBGS.....	6
CCGS President’s Letter.....	7
Annual Shrimp Boil.....	8
May Luncheon Meeting.....	9
CBGS President’s Letter.....	10-12
GeoGulf (GCAGS) 2025.....	13
Thomas J. Long Celebration of Life.....	14-15
Slides: Hurricanes of the Coastal Bend.....	17-38
CCGS Papers available for purchase at the Bureau of Economic Geology.....	39
Geo Link Post.....	40
Type Logs of South Texas Fields.....	41
Order Oil Men DVD.....	42
Wooden Rigs Iron Men.....	43
Professional Directory.....	44



CORPUS CHRISTI GEOLOGICAL SOCIETY

P.O. BOX 1068* C.C.TX. 78403

2024-2025

www.ccgeo.org

OFFICERS

President	Dennis Moore	361-946-6037	moore.dennis24@yahoo.com
Vice President	Juan Cabasos	361-289-5457	juan.cabasos@corelab.com
	Charles Benson	402-319-0064	charlesl.jr.@icloud.com
Secretary			
Treasurer	Sebastian Wiedmann	361-946-4430	swiedmann.geo@gmail.com
Past President			
Councilor I	Frank Cornish	361-563-9184	frank.cornish@gmail.com
Councilor II	Rick Paige	361-884-8824 Ext 415	rpaigesio2@gmail.com

AAPG DELEGATE

EDITORS

Bulletin Editor	Marian Wiedmann	361-855-2542	wiedgulf@gmail.com
Bulletin Tech. Editor	Jeanie Timmermann	361-883-1492	jeanie@industrialcorrosion.net
Web Master	Josh Pollard	361-654-3100	support@interconnect.net

GEOLOGICAL SOCIETY COMMITTEES & CHAIRPERSONS

MEMBERS PLEASE NOTE COMMITTEES CONTINUE TO FUNCTION WITHOUT A NAMED CHAIR, ALL ARE WELCOME TO ANY COMMITTEE THAT SUITES YOUR INTEREST

Advertising/Bus. Cards Arrangements	Leighton Devine Wes Gisler & Will Graham	361-882-8400 830-239-4651 361-885-0110	ldevine@suemaur.com arrangements@ccgeo.org willg@headingtonenergy.com
Continuing Education			
Education	Dawn Bissell	361-960-2151	bissells@swbell.net
Scholarship Program	Dawn Bissell	361-960-2151	bissells@swbell.net
Fishing Tournament	Leighton Devine	361-882-8400	ldevine@suemaur.com
History	OPEN (Ray Govett)	361-855-0134	ray30@hotmail.com
Membership	Dorothy Jordan Randy Bissell	361-885-0110 361-885-0113	dorothyj@headingtonenergy.com randyb@headingtonenergy.com
University Liaison	Dr. Veronica Sanchez	361593-4925	veronica.sanchez@tamuk.edu



COASTAL BEND GEOPHYSICAL SOCIETY
P.O. BOX 2741 *C.C. TX. 78403
2024-2025

OFFICERS

President	Dr. Mohamed Ahmed	361-825-3278	mohamed.ahmed@tamucc.edu
Vice President	Dr. Subbarao Yelisetti	361-593-4894	subbarao.yelisetti@tamuk.edu
Secretary/Treasurer	Charles Benson	402-319-0064	charlesjr.@icloud.com
Golf Chairman	Mark Wiley	361-902-2844-office 361-445-6712-mobile	Mark_Wiley@eogresources.com
Scholarship Chairman	Matt Hammer	361-888-4792 361-563-6137	mhammer@royalcctx.com

**Visit the geological
web site at
www.ccgeo.org**

CCGS/CBGS JOINT MEETING SCHEDULE 2024-2025

September 2024							October 2024							November 2024							
S	M	T	W	Th	F	S	S	M	T	W	Th	F	S	S	M	T	W	Th	F	S	
1	2	3	4	5	6	7			1	2	3	4	5							1	2
8	9	10	11	12	13	14	6	7	8	9	10	11	12	3	4	5	6	7	8	9	
15	16	17	18	19	20	21	13	14	15	16	17	18	19	10	11	12	13	14	15	16	
22	23	24	25	26	27	28	20	21	22	23	24	25	26	17	18	19	20	21	22	23	
29	30						27	28	29	30	31			24	25	26	27	28	29	30	

2024-25 Membership Kickoff—Nueces Brewing Co. Downtown, 5-8 p.m.

Meeting at Joe’s Crab Shack Downtown. 11:00 Bar, 11:45 lunch, 12:00 speaker. Speaker: Julie Bloxson Associate Professor at Stephen F. Austin State University. “Understanding the Lithium Content Trends in the Smackover Formation”

Meeting at Joe’s Crab Shack Downtown. 11:00 Bar, 11:45 lunch, 12:00 Speaker: Mark Morford, Geophysicist (Technical Sales), Lumina “State-of-the Art Seismic Processing.”

December 2024							January 2025							February 2025						
S	M	T	W	Th	F	S	S	M	T	W	Th	F	S	S	M	T	W	Th	F	S
1	2	3	4	5	6	7				1	2	3	4							1
8	9	10	11	12	13	14	5	6	7	8	9	10	11	2	3	4	5	6	7	8
15	16	17	18	19	20	21	12	13	14	15	16	17	18	9	10	11	12	13	14	15
22	23	24	25	26	27	28	19	20	21	22	23	24	25	16	17	18	19	20	21	22
29	30	31					26	27	28	29	30	31		23	24	25	26	27	28	

Meeting at Joe’s Crab Shack Downtown. 11:00 Bar, 11:45 lunch, 12:00 speaker: Chuck Benson, USAF Meteorologist (Retired). “Hurricanes of the Coastal Bend.”

Meeting at Joe’s Crab Shack Downtown. 11:00 Bar, 11:45 lunch, 12:00 speaker: Jason Ashby. “Hydrogen As a Future Alternative Source of Energy.”

CCGS/CBGS Joint Meeting Schedule 2024-2025

March 2025							April 2025							May 2025						
S	M	T	W	Th	F	S	S	M	T	W	Th	F	S	S	M	T	W	Th	F	S
						1			1	2	3	4	5					1	2	3
2	3	4	5	6	7	8	6	7	8	9	10	11	12	4	5	6	7	8	9	10
9	10	11	12	13	14	15	13	14	15	16	17	18	19	11	12	13	14	15	16	17
16	17	18	19	20	21	22	20	21	22	23	24	25	26	18	19	20	21	22	23	24
23	24	25	26	27	28	29	27	28	29	30				25	26	27	28	29	30	31
30	31																			



Annual Shrimp Boil at Doc's Seafood & Steaks – 13309 S. Padre Island Dr. Starts at 5:30 Hosted by CCGS/CBGS and SIPES. \$40.00 at the door* Cash bar

Meeting at Joe's Crab Shack downtown. 11:00 Bar, 11:45 lunch, 12:00 speaker

Calendar Of Meetings and Events

Corpus Christi Geological/Geophysical Society.....	Third Wed.—11:30a.m.
SIPES Corpus Christi Luncheons.....	Last Tues.—11:30a.m.
South Texas Geological Society Luncheons.....	Second Wed—noon San Antonio
San Antonio Geophysical Society Meetings.....	Fourth Tuesday
Austin Geological Society.....	First Monday
Houston Geological Society Luncheons.....	Last Wednesday
Central Texas Section of Society of Mining, Metallurgy & Exp.....	2 nd Tues every other month in San Antonio

www.ccgeo.org



It is time to renew membership in the Corpus Christi Geological Society and/or the Coastal Bend Geophysical Society.

The easiest way to do that is to use our pay online website found at **<https://corpus-christi-geological-society.square.site/>**

Or use your smartphone with this QR Code





Greetings to All

Happy March. We will hold no lunch meeting this month, so everyone can enjoy a relaxing spring break. April will bring us a very special evening meeting. The scholarship committee will be passing out well deserved scholarships to area students. The evening will start at 5:30 pm Thursday April 24th at Doc's with the food (shrimp boil) being served at 6:00 pm. Currently it will be a cash bar unless we get a sponsor for the bar. There is an announcement elsewhere in the Bulletin.

I hope everyone enjoyed the talk about hurricanes of the Texas coast in January by our very own Charles Benson. This talk brought back memories for me of Brent in 1999. I was part of a field trip to witness the energy that can cut a barrier island. It also reminded me of the many hours helping friends recover from Harvey in Rockport.

The February talk on hydrogen as an energy source was very interesting. Jason gave an excellent talk and many questions were asked about the carbon / hydrogen processes.

It is time to discuss leadership of CCGS. We NEED people to step up and become a committee head or officer. Please volunteer and use the opportunity for more networking and satisfaction of knowing you are a person that will lead the CCGS in the future. We at the CCGS have a very diverse group. Our group has experience and youth. OK, I will get off my soapbox.

April will also feature GEOGULF at Stephen F. Austin University in Nacogdoches, Texas.

It is an honor for me to be president. Thank you to those who volunteer to fill positions in our society. PLEASE consider a few hours of volunteering. Besides doing a good thing, it will give you a higher sense of accomplishment.

Remember our society depends on YOU.

Dennis O. Moore

President CCGS 2023-25

2025 Annual Shrimp Boil

Doc's Seafood & Steaks

Waterline area

below Doc's at Sea Level!

Doc's is under the J.F.K. Bridge
on Padre Island
13309 S. Padre Island Dr

Thursday, April 24, 2025
Starting at 5:30

Boiled Shrimp, Sausage,
and all the fixin's at 6 pm

RSVP by Thursday April 17th

Hosted by
Corpus Christi Geological Society,
Coastal Bend Geophysical Society, and
SIPES

\$40.00 at the door*
Cash bar

*Entrance for SIPES members is covered



**CORPUS CHRISTI GEOLOGICAL SOCIETY
COASTAL BEND GEOPHYSICAL SOCIETY**



LUNCHEON MEETING ANNOUNCEMENT

May 21st, 2025

- Location:** Joe's Crab Shack, 444 North Shoreline Dr.,
Corpus Christi, TX 78401
- Student Sponsors:** Viper Exploration, Imagine Resources,
Mary DeMis. Thank you!
- Time:** 11:30 AM Social, Lunch follows at 11:45 AM,
Speaker at 12:00 PM
- Cost:** \$35.00 (additional \$10.00 surcharge without
reservation: NO SHOW may be billed.)
- Reservations:** Please RSVP by 11:00 AM on Monday, May 19th
before the meeting!

Email: arrangements@ccgeo.org

Please note that luncheon RSVPs are a commitment to Joe's Crab Shack (Shoreline Drive) and must be paid even if you can't attend the luncheon.

SPONSORSHIP OPPORTUNITIES ARE AVAILABLE! IF YOU WOULD LIKE TO SPONSOR, PLEASE CONTACT US AT:

arrangements@ccgeo.org

Speaker to be determined



CBGS President's Letter

CBGS Board 2023-2024

Acting President- Dr. Subbarao Yelisetti

Vice President- Dr. Subbarao Yelisetti

Secretary/ Treasurer-Charles Benson

CBGS Scholarships

The Coastal Bend Geophysical Society will be awarding scholarships in Fall 2025. Scholarships will be awarded based on merit and need. The award amounts may vary with the minimum award being \$1,000. The application deadline is August 28th, 2025.

Scholarship Requirements

Criteria for awarding the Scholarship from Coastal Bend Geophysical Society of Corpus Christi, Texas:

1. Scholarships are open to undergraduate or graduate students.
2. Must have declared major in Geophysics, or Geology with a concentration in Geophysics or Petrophysics.
3. Preference is given to students attending Coastal Bend schools (TAMU-K, TAMU-CC and Del Mar College), then to Coastal Bend natives attending other universities.
4. Must have a GPA of at least 3.0 and be in good standing with the school.
5. Must make effort to attend a Coastal Bend Geophysical Society Meeting in Corpus Christi Texas after being awarded a scholarship to be recognized by the society.

News

- According to the U.S. Energy Information Administration (EIA), US crude oil production rose to record high of 13.491 million barrels per day in December, 2024, up from 13.314 million bpd in November.
- According to the EIA forecasts, U.S. crude oil output is expected to average 13.59 million barrels per day (bpd) in 2025, up from its prior estimate of 13.55 million bpd.
- As of February 11, Brent crude prices are expected to average around \$74 in 2025, and \$66 in 2026, as reported by Arathy Somasekhar on reuters.com.

CBGS Business

CBGS currently has 28 active members, 2 honorary members, and 40 student members. Raised \$1,450 towards student scholarships through membership revenue this past year.

CBGS workshops/talks

CBGS is looking forward to offer workshops/talks in the future. Topic/speaker suggestions are welcome. Email your suggestions to Subbarao.Yelisetti@tamuk.edu

New Degree Tracks at TAMUK and Graduate Scholarships

- Texas A&M University-Kingsville (TAMUK) started its first cohort of MS Petrophysics program in Fall 2018. If you are interested in joining this program in Fall 2025, please contact the graduate coordinator for MS in Petrophysics, Dr. Subbarao Yelisetti at Subbarao.Yelisetti@tamuk.edu.
- The Department of Physics and Geosciences at TAMUK is offering competitive scholarships for MS Petrophysics students. For additional details about the program and scholarships, please visit the website:
<https://www.tamuk.edu/artsci/departments/phge/phys/academics/gp.html>
- **BS degree in Geophysics, Minor in Geophysics and Certification in Geophysics** offered at Texas A&M University-Kingsville since Fall 2017. Interested students can contact Dr. Subbarao Yelisetti (Subbarao.Yelisetti@tamuk.edu) for additional information.

Education/Events

-SEG

SEG 2025 annual meeting (IMAGE) will be held in Houston, TX from August 25-28. See <https://seg.org/Events/Upcoming-SEG-Annual-Meetings> for additional details.

See <https://seg.org/Education/Lectures/Distinguished-Lectures> for information about upcoming SEG distinguished lecture in Houston and other locations.

See <https://seg.org/Education/Lectures/Honorary-Lectures> for SEG honorary lecture locations in Texas.

-AGU

2025 Fall AGU annual meeting will be held in New Orleans, LA from December 15-19th, 2025. <https://www.agu.org/Fall-Meeting>

Monthly Saying

"At 1970 rates of production, (Canada's) reserves represent 923 years supply for oil and 392 years for gas". Joe Greene, Federal Energy Minister, 1971.

Monthly Summary

Texas Oil and Gas Info	Current Month	Last Month	Difference	
Texas Production	MMBO/BCF	MMBO/BCF	MMBO/BCF	
Oil	156.5	167.3	-10.8	November
Condensate	24.7	26.5	-1.8	November
Gas	1020.4	1071.9	-51.5	November
	Current Month	Yr to date - 2025	Yr to date - 2024	
Texas Drilling Permits	666	666	8683	January
Oil wells	134	134	1742	January
Gas wells	26	26	491	January
Oil and Gas wells	463	463	5943	January
Other	6	6	143	January
Total Completions	1717	1717	21022	January
Oil Completions	1340	1340	16733	January
Gas Completions	377	377	4289	January
New Field Discoveries	0	0	5	January
Other	512	512	9399	January

Subbarao Yelisetti

Acting President, CBGS

Subbarao.Yelisetti@tamuk.edu

GEOGULF (GCAGS) 2025

Registration for GeoGulf 2025 is Open

Seize the opportunity to join the prestigious Gulf Coast Section at **GeoGulf 2025**, from April 6–8, 2025, at the scenic Stephen F. Austin State University in Nacogdoches, Texas. Secure your spot now with our exclusive early bird rate of \$400 available until March 1, before it rises to \$500.

REGISTER HERE

Included in Registration:

- **Dynamic Technical Program** – Dive into over 115 presentations spanning petroleum systems, critical minerals, water resources, and beyond, all packed into an immersive two-day experience.
- **East Texas Basin Spotlight Session** – Uncover groundbreaking research on one of the Gulf Coast's most geologically and historically pivotal basins.
- **Core Workshop** – Led by the esteemed Molly Turko and Jon Rotzien, this interactive session offers a treasure trove of insights into the hidden wonders of the region's subsurface geology.
- **Networking and Social Events** – Engage in lively icebreakers and vibrant happy hours designed to forge meaningful connections with fellow colleagues and industry leaders.
- **Lunches Provided** – Enjoy Monday and Tuesday lunches with expert-led discussions. Monday features the Geology Meets Technology Panel on Big Data and AI in exploration, while Tuesday highlights Lorena Moscardelli on Emerging Energies and the Subsurface.
- **Monday Night Social** – Join us for a fun-filled evening featuring live music, food, and drinks in the heart of East Texas.

GeoGulf 2025 will be an incredible experience, offering cutting-edge technical content, top-tier networking, and a fantastic time in the Pines. Register now at **www.geogulf2025.org** before early bird prices end on March 1.

We look forward to seeing you in Nacogdoches!

LEARN MORE HERE

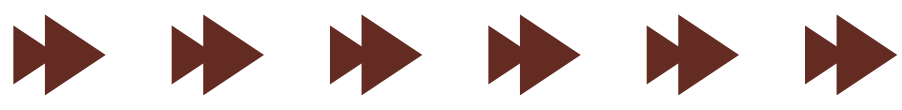
Celebration of Life



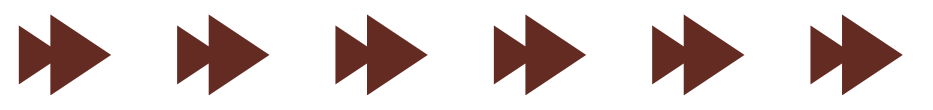
THOMAS J. LONG

September 29, 1936 - February 3, 2025





Obituary



Thomas Jay Long, 88, got up to get a midnight snack this past Monday, and with a pocket full of cookies, passed away peacefully. The other pocket was full of crumbs.

Tom lived a complete life, from start to finish.

Born in a barn (or so we were told) on September 29, 1936, near Braman, OK, Tom grew up in a Phillips camp town, Bunavista, in the panhandle of Texas. He loved exploring the land, collecting arrowheads, and giving his two sisters, Maralee and Nancy, a hard time. After graduating from Borger High School, he attended the University of Oklahoma, which began a lifelong passion for the OU Sooners. There, he studied Geology and, always up for some fun, served as the social chair and president for his dorm. Most importantly, he met his best friend and college roommate, Jerry Haston, who would eventually introduce him to the love of his life, Margie.

After graduating, Tom served his country with honor in the U.S. Army, stationed at a scientific research base in Greenland. There, he studied grain conservation and the flow of ice and often re-told the story about how he and Big Ernie got on the wrong plane headed back to base camp, and reminded us that none of us kids would be here if he had gotten on the right plane, which went down in a whiteout. We are deeply thankful for the error.

A scientist and rockhound, his passion for the earth's mysteries led him to a distinguished career as a Geophysicist, eventually starting his own exploration company, Seven L's Oil & Gas, named for his family. He always knew what he wanted to be when he grew up, so his career was indeed much more than a job; it was a calling. He was well-respected in the industry and admired by everyone who had the privilege of working with him. We were once told that he had earned the nickname "The Armadillo" from his colleagues, we suppose because he was small, tough, and unmistakably Texan. He was incredibly active in the community, having helped reinstate the Coastal Bend Geophysical Society in 1984 and participated in leadership roles in many societies.

His career took him around the country, from Houston to Anchorage to Lafayette, before settling in Corpus with his beloved wife of nearly 50 years, Margie. There, they spent most of their life together. His love for her was fierce and unwavering, and together they raised their five children who love them very much. He was an incredible father who loved to take his kids on digs for arrowheads and pottery and was king of the road trip—especially across the southwest, stopping at every rock shop and greasy spoon along the way, instilling a sense of curiosity and adventure in his children. He led by example and encouraged them to be themselves, to follow their dreams, and to always show loving kindness to others.

Known for his dry, wry, mildly inappropriate sense of humor, Tom always had a clever aside waiting for you, but he was also known for his fierce loyalty and boundless generosity. He made everyone feel valued. He listened intently and with care. He was always kind, always giving to family, friends, and strangers in need. He was a man of simple pleasures—old country Music (Willie, Patsy), Chinese food, good Texas BBQ, a slice of chocolate cake, tending to his backyard grapefruit trees and feeding the birds. He loved and collected art – especially paintings of the desert southwest and Native American artifacts. Lastly, he never met a dog (or animal, for that matter) that he didn't like...and all dogs loved Tom Long.

He was a man of deep faith who knew Jesus Christ as his Savior and exemplified His love by serving others. He was a proud member of the United Methodist Church. He had a beautiful, deep voice and for many years sang in the church choir. He spent his last years living with his eldest daughter, Lois, and her family in Keller. There, each morning, he would wind the clock and sit in his chair and softly sing the gospel songs he knew by heart and was more than happy to sample all the cookies his grandkids baked.

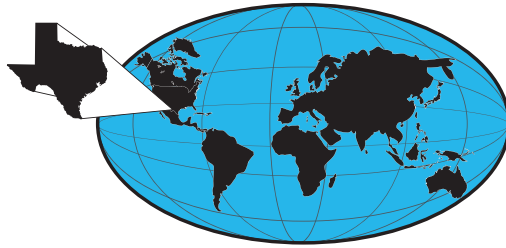
He is preceded in death by his beloved wife, Margie Rae Long of Austin; parents, Charles and Esther Long of Fritch; sister, Maralee (Long) Brown of Arlington; and many, many dear friends and relatives.

He is survived by his sister, Nancy (Long) McCann of Fort Worth; children: Lois (Long) Scott and husband, Dennis, of Keller; Thomas Kyle Long and wife, Molly, of College Station; Lori (Long) Plowman and husband, Chad, of Weatherford; Cami (Long) Basse and husband, Chris, of San Antonio; Amber Long and fiancé, Justin Keen, of Nashville, TN.

Tom (AKA Pop-Pop) was proud grandfather to seven grandchildren: Travis Long, Caitlyn (Scott) Wermuth, Sloane Basse, Collin Thomas Scott, Avery (Long) Harrington, Kennedy Scott, and Hayden Thomas Plowman. He is also survived by many beloved nephews and nieces and cherished friends.

When asked to describe him in one word, those who loved him said: Generous. Loyal. Easygoing. Kindhearted. Quietly-funny. The-Greatest. But we all know just one word isn't enough to sum up a person's life. You were lucky if you knew him. We are beyond thankful for the 88 years we got with him. We know he is at peace in Heaven, surrounded by so much love. He will always be deeply loved and greatly missed.





THUNDER EXPLORATION, INC.

Celebrating 40+ years of prospect generation and exploration in the following South Texas plays and trends.

Frio	San Miguel	Edwards
Jackson	Austin Chalk	Pearsall
Yegua	Eagle Ford	Sligo
Wilcox	Buda	Cotton Valley
Olmos	Georgetown	Smackover

Thunder continues to seek non-operated working interest participation in projects and prospects.

Thunder has participated in more than 100 new drills in the last seven years.

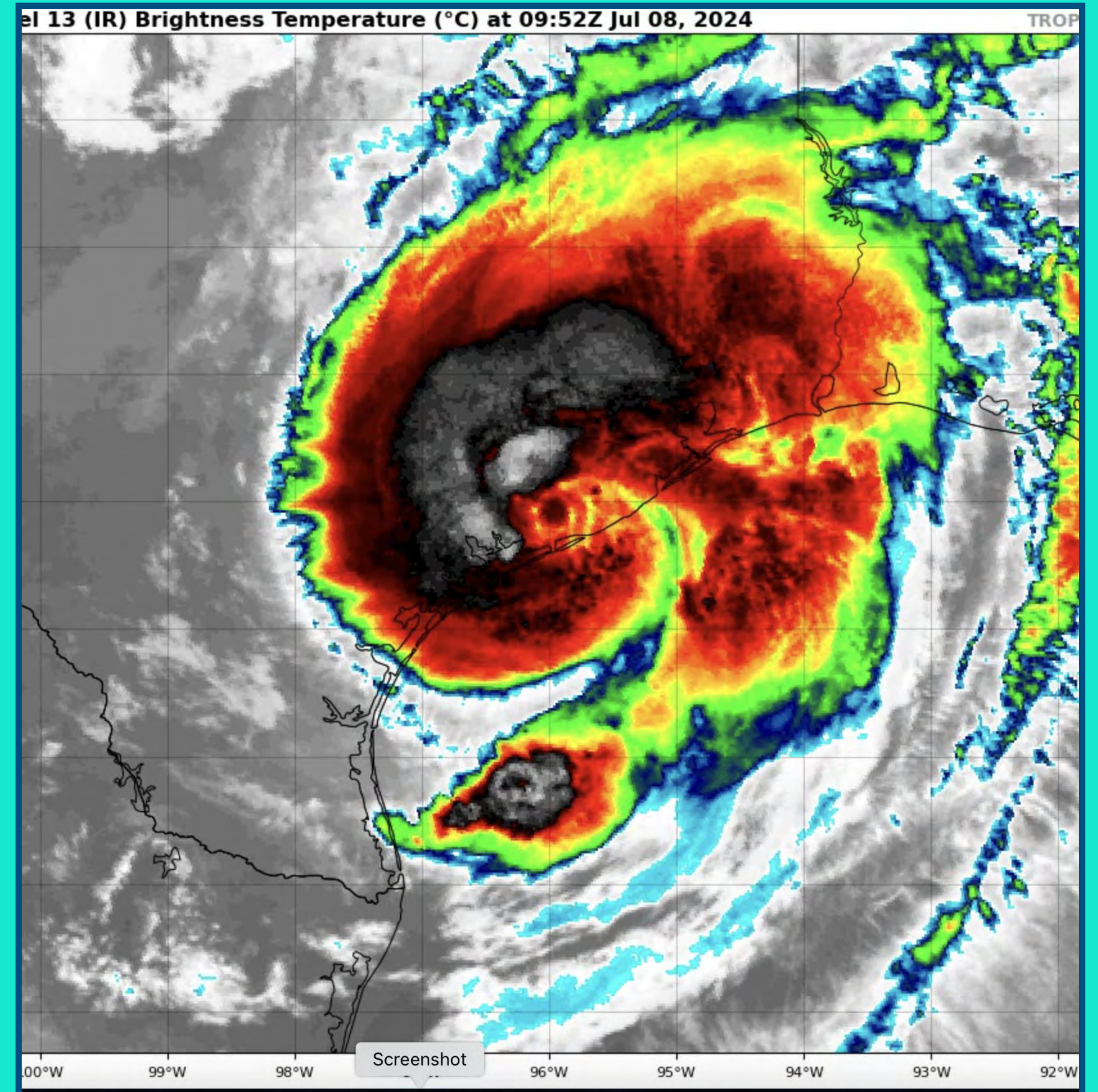
Walter S. Light Jr.
President/Geologist
713.823.8288
EMAIL: wthunderx@aol.com

Hurricanes of the Coastal Bend

Chuck Benson, Colonel, USAF (Retired)

Overview

- Introduction*
- Formation
- Forecasting
- Case Studies
- Conclusions



Source: National Hurricane Center

Necessary Conditions For Formation

- SSTs of at least 80F; must be deep!
- Oceanic region at least 5° from equator
- Warm, moist atmosphere
- Weak vertical wind shear
- Low-level vorticity
- Conditional instability

These are necessary, but not sufficient conditions for formation to occur...what else is needed?



SPONSORS

SUEMAUR

Experience. Expertise. Exploration.

EXPLORING SINCE 1968

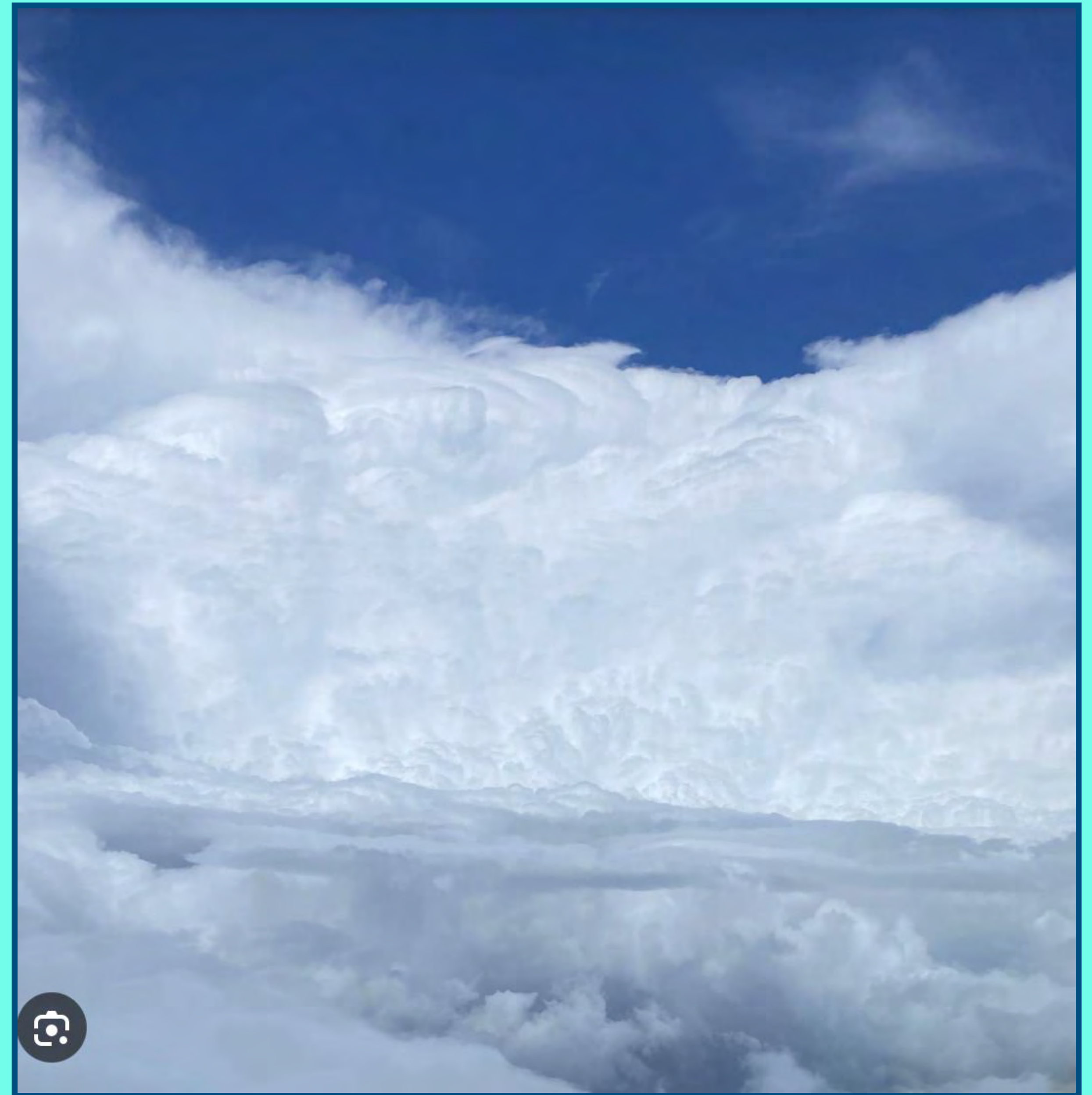


539 N Carancahua St, Suite 1100, Corpus Christi, TX 78401
(361) 884-8824
www.suemaur.com

Forecasting Step 1: Observations

Observational Sources

- Ship reports
- Ocean buoys
- Land reports
- Upper-air soundings
- Satellite data
- Doppler radar (when close to land)
- Aircraft reconnaissance (USAF, NOAA)
- Drones (air, undersea)



Source: USAF

SPONSORS



Panex Operating, LLC

Austin Nye, Manager
Corpus Christi, Texas

Oil & Gas Consulting Services

(361) 443 2239

anye@royaloilandgas.com

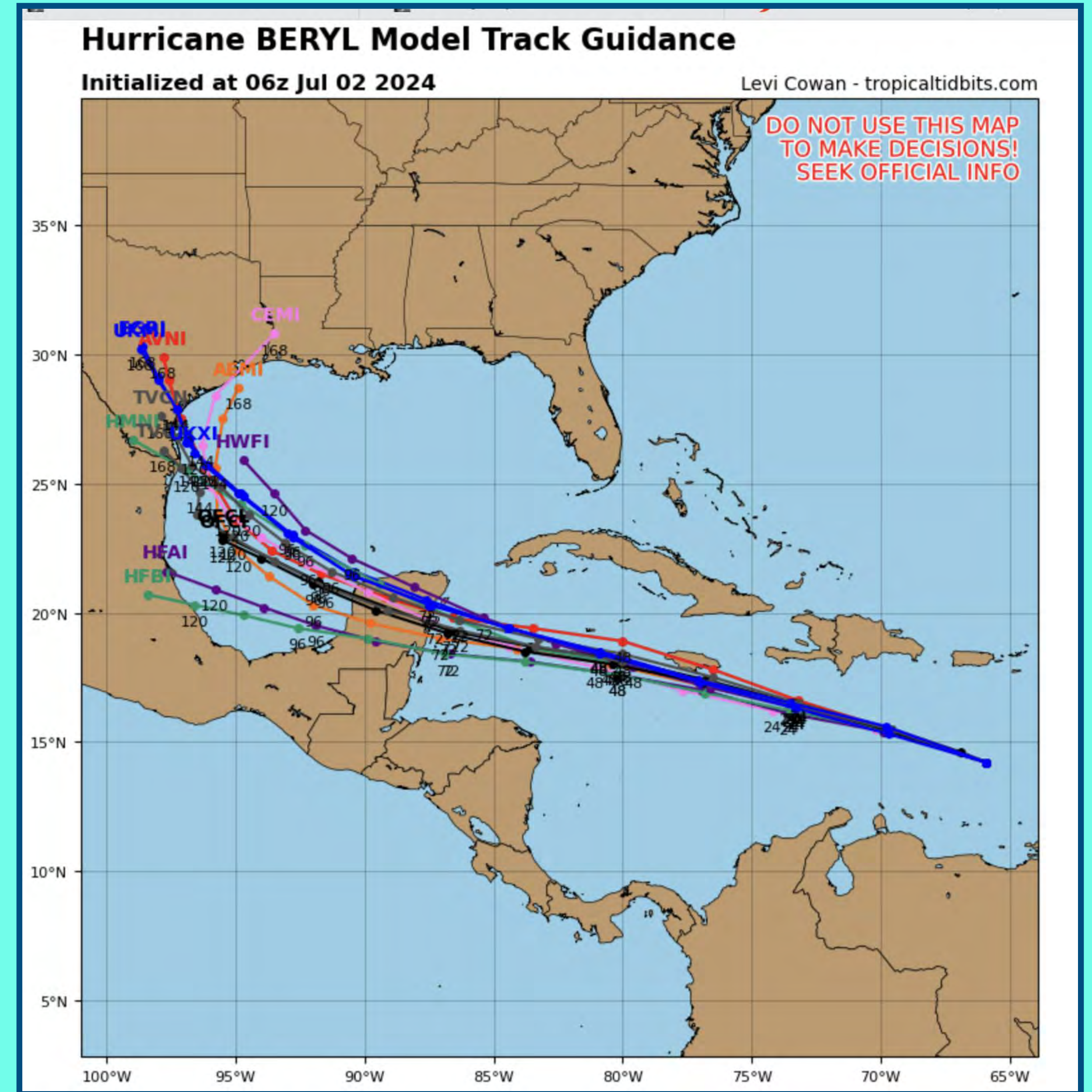


Forecasting Step 2: Numerical Forecast Models


Numerous forecast model data available

- GFS (U.S.)
- ECMWF (European)
- CMC (Canadian)
- HWRF (U.S.)
- COAMPS (U.S. Navy)
- Climatology/Persistence
- Ensembles

All of these create “spaghetti plots”*



SPONSORS



Nueces Energy, Inc.
P.O. Box 252
Corpus Christi, Texas 78403
Office: (361) 884-0435
Fax: (361)-654-1436
www.nuecesland.com

Nueces Energy, Inc. is a complete land services company in the business of providing professional landmen and project management to various energy related jobs primarily in the oil and gas industry.

With over 30 years of industry experience, we specialize in determining surface and subsurface ownership and negotiating and acquiring contracts, rights of way agreements, and easements to provide our clients with the legal right to explore and develop oil and gas resources. We provide a full service land company capable of managing any project no matter how large or small.

Jonathan N. Halepeska, CPL, REALTOR® and ROW Agent



P.O. Box 98, Victoria, Texas 77902
301 S. Bridge St., Suite #1, Victoria, Texas 77901
(361) 550-4193
jnhalepeska@gmail.com

Forecasting Step 3: Official NHC Forecast

NHC forecasters use their knowledge and judgement to issue the official forecast track

- Tracks are generally issued four times per day
- NHC official forecast tracks generally perform better than the computer models
- 24-hr error: 40 miles
- 48-hr error: 70 miles
- 72-hr error: 100 miles
- 96-hr error: 150 miles
- 120-hr error: 220 miles

After NHC forecast tracks are released, “spaghetti plots” become a waste of time (although you may find them interesting!)



JOIN!



The Desk & Derrick Club of Corpus Christi is a dynamic organization that promotes the education of the petroleum, energy and allied industries and advances the professional

Member Benefits:

- Learn from energy industry experts.
- Network with energy industry leaders and colleagues.
- Attend regional and national meetings.
- Receive critical updates and information about the energy industry.
- Enhance communication and leadership skills.
- Make friends for life!

For more information about the Desk & Derrick Club of Corpus Christi and to learn about member eligibility, go to www.addc.org or contact Jena Nelson at 361-844-6726 or email at jena@amshore.com

The Desk & Derrick Club of Corpus Christi is a proud affiliate of the Association of Desk And Derrick Clubs, www.addc.org

Percussion Sidewall Analysis



Convenient Gulf Coast locations

Accelerate your data delivery with 24 hr access to any of our 3 Gulf Coast labs.



Fast reporting times (hours, not days or weeks) Percussion sidewall core analysis within hours of receipt.



Measured properties Saturations, porosity and bulk densities directly measured. Empirically derived permeability.



API estimates of oil quality
Via refractive index. Indicator of gas presence via API combustible gas detector also determined.



Advanced Rock Typing Expert guided machine learning based analog search for routine and advanced petrophysical properties.



Strategic Solutions
log modeling, data analytics, completion and drilling recommendations.

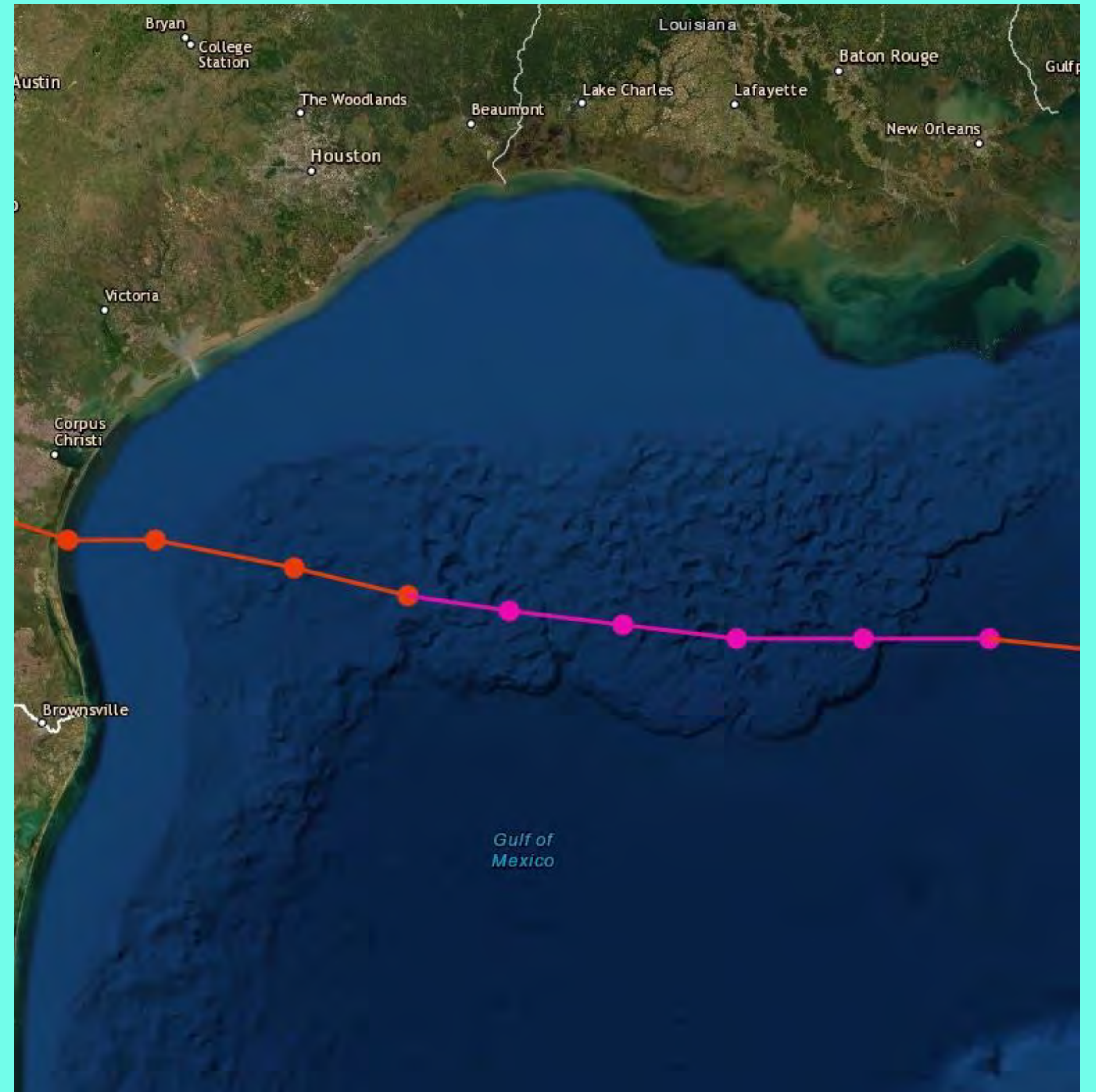


LamSpec proprietary model from LPSA, including Cap Pressure Simulation, Lamination-Specific analysis, and enhanced permeabilities.

1919 Hurricane (9/14/19)

Fast Facts

- **Category 3 at landfall**
- **16 ft storm surge downtown CRP**
- **CRP wind gusts over 100 mph**
- **Catastrophic damage downtown**
- **600-1,000 deaths**
- **Dr. Robert Simpson**

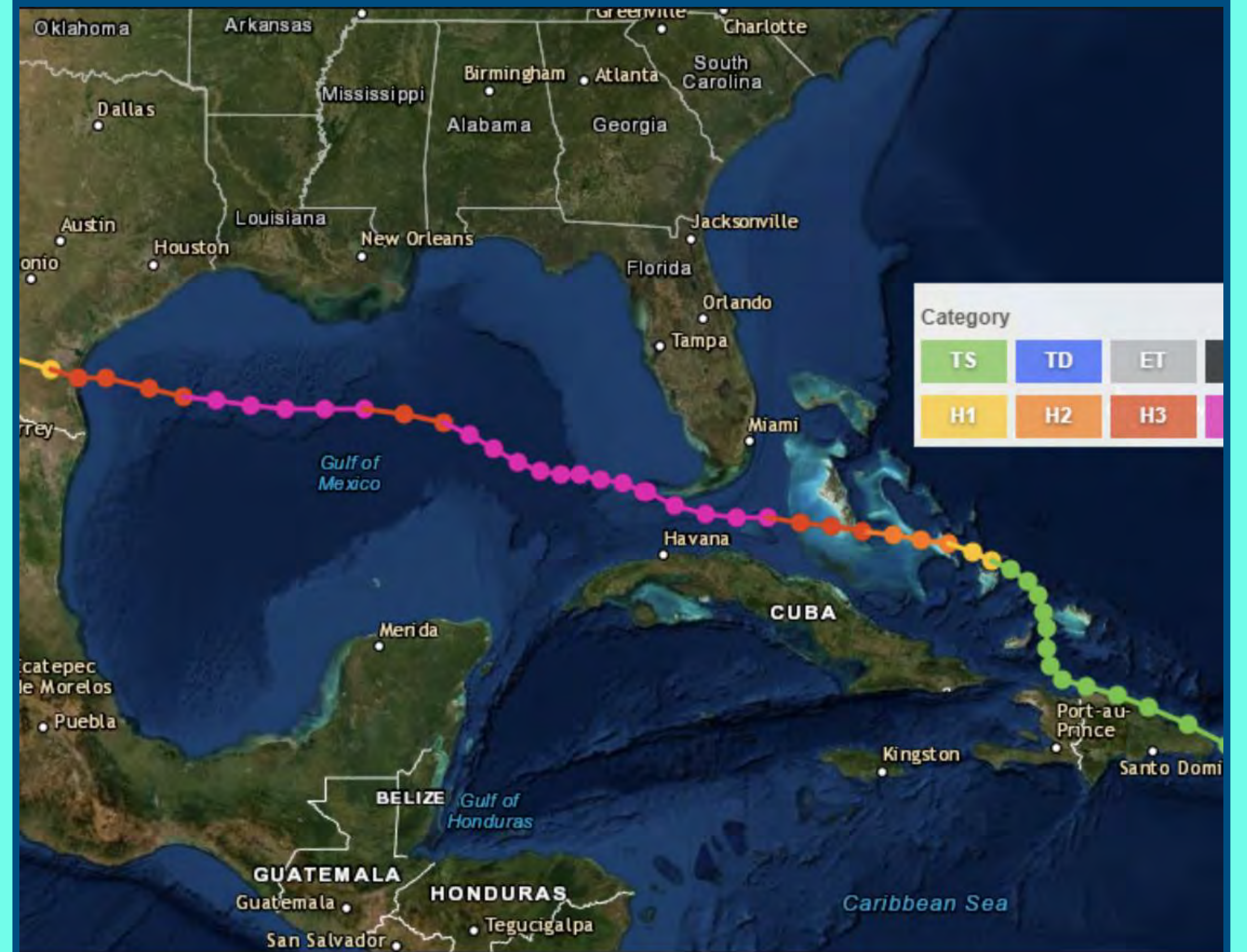




Heavy destruction of shorefront buildings and businesses.

All photos courtesy of the L.M. Gross Collection, Special Collections and Archives, Mary and Jeff Bell Library, Texas A&M University

Source: Texas A&M-CC



Full track of the 1919 Hurricane

Source: Public Domain

Hurricane Celia (8/3/70)

Fast Facts

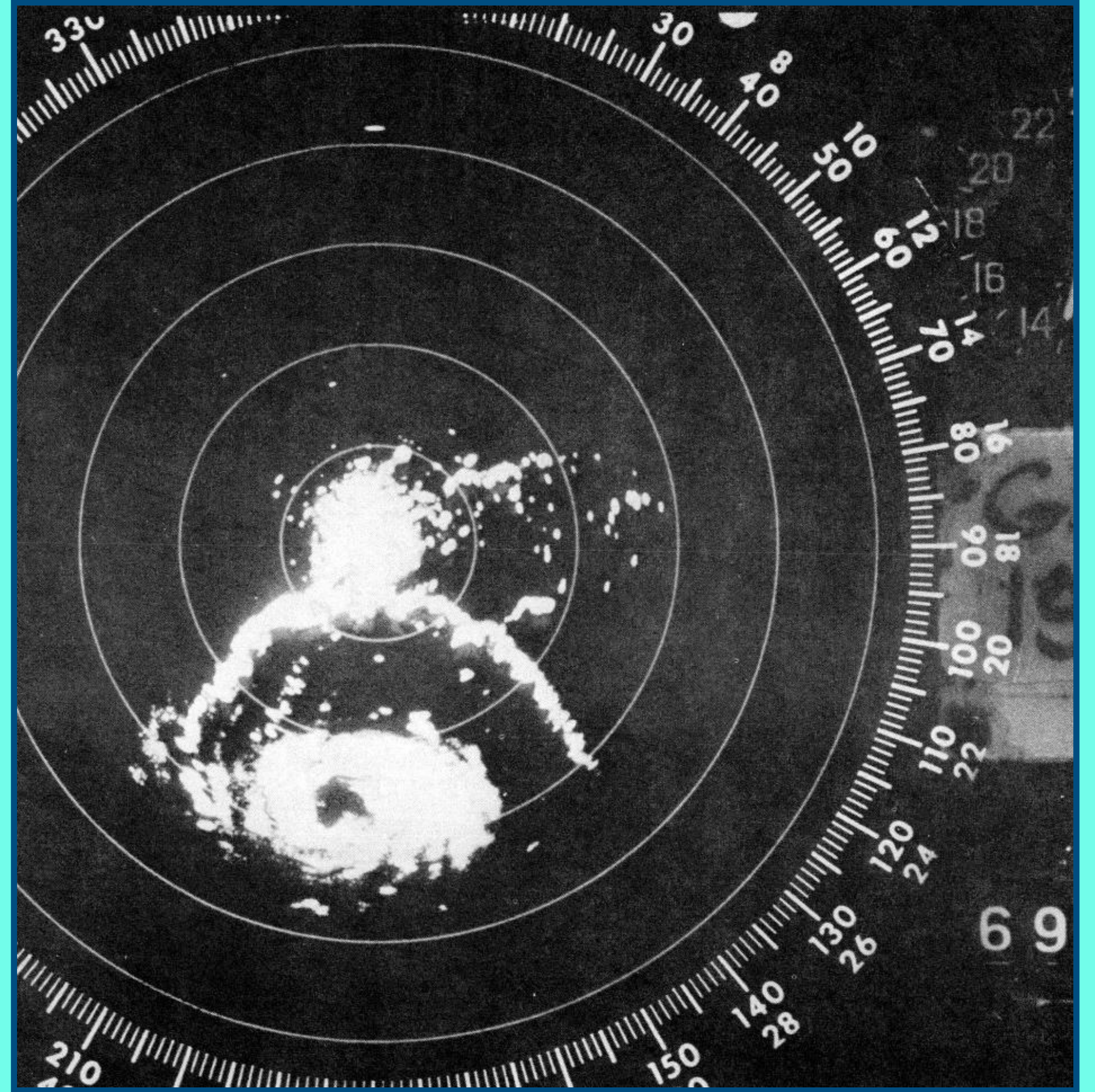
- **Category 4 at landfall**
- **Initial warnings: Houston/Galveston**
- **Explosive intensification (record)**
- **CRP wind gusts over 160 mph**
- **Catastrophic wind damage**
- **Dr. Fujita**
- **15 deaths/466 injured/\$950M damage**
- **TWIA**



Source: CRP NWS Office



Source: Public Domain

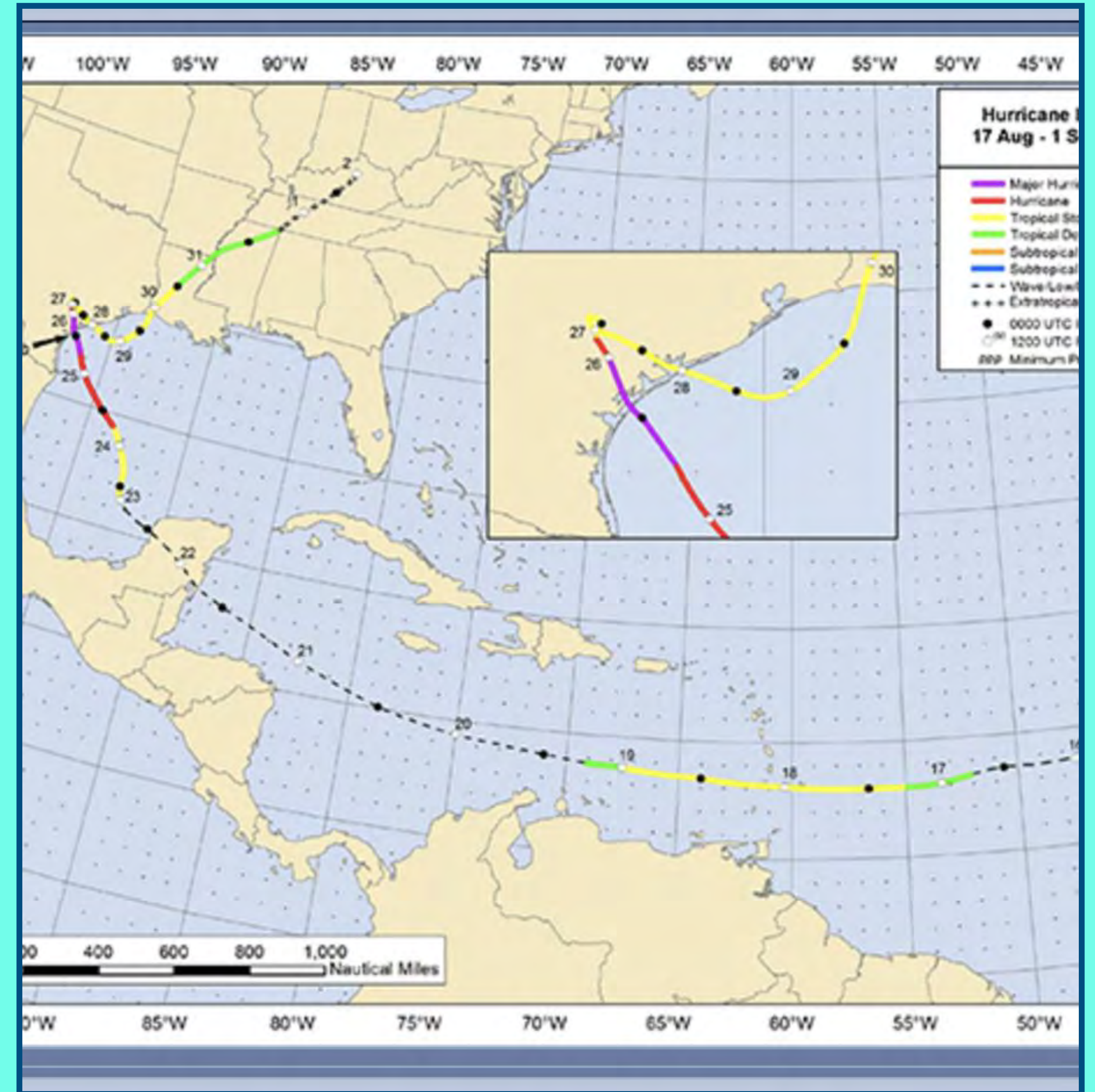


Source: GLS NWS Office

Hurricane Harvey (8/25/17)

Fast Facts

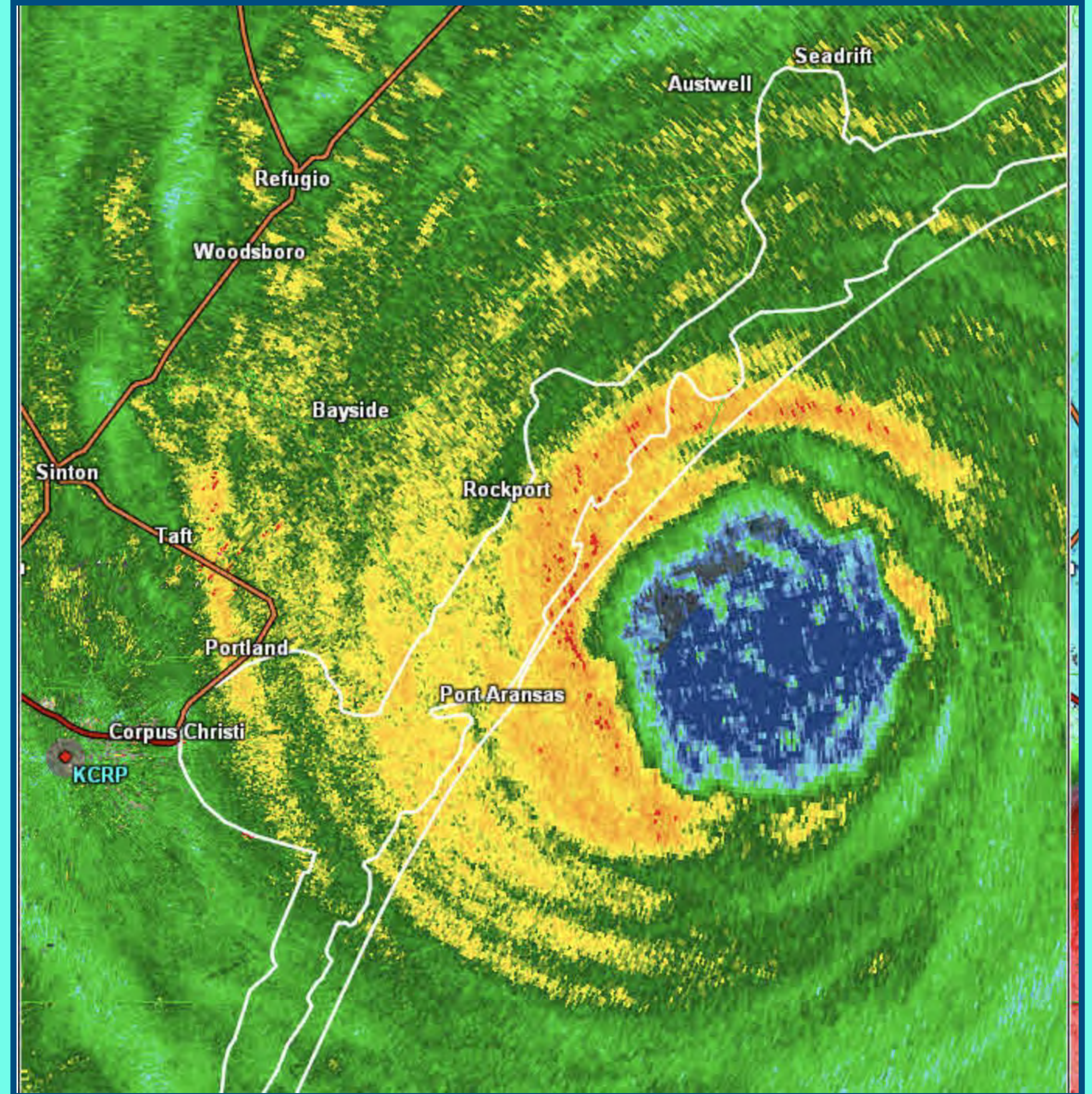
- Category 4 at landfall
- Explosive intensification
- Rockport wind gust of 145 mph
- 12 ft storm surge (Port Lavaca)
- 50 in rainfall in Houston
- Addicks Dam/Cinco Ranch tragedy
- Tornadoes
- 80 deaths, \$125 billion in damage
- Psychological impact?



Pictures



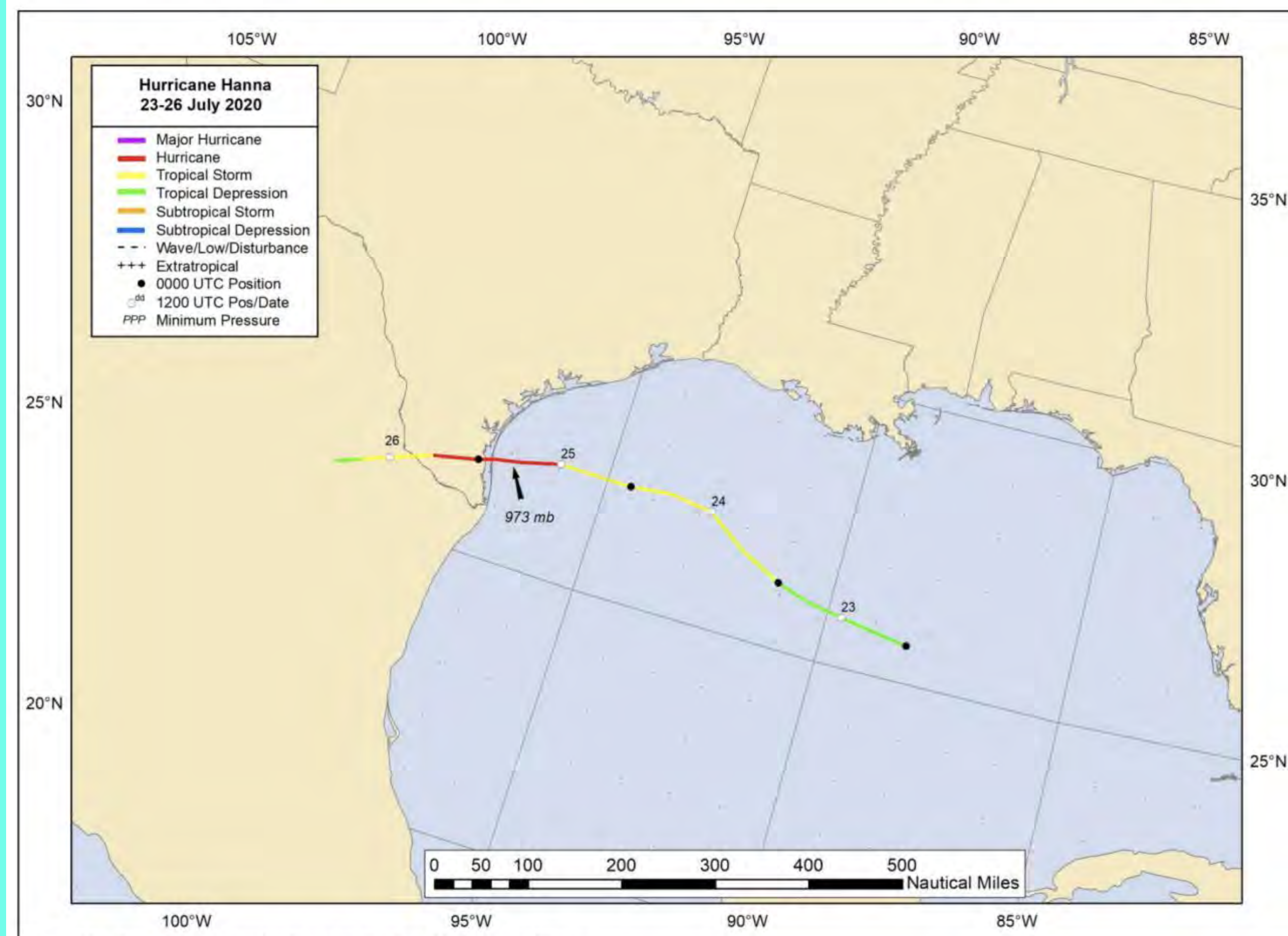
Rockport



Hurricane Hanna (7/25/20)

Fast Facts

- **Category 1 at landfall***
- **Rapid intensification before landfall**
- **NGP wind gusts of 65 mph**
- **6.5 ft storm surge (Bob Hall Pier)***
- **Widespread storm surge damage**
- **PINS**
- **CRP was very fortunate!**

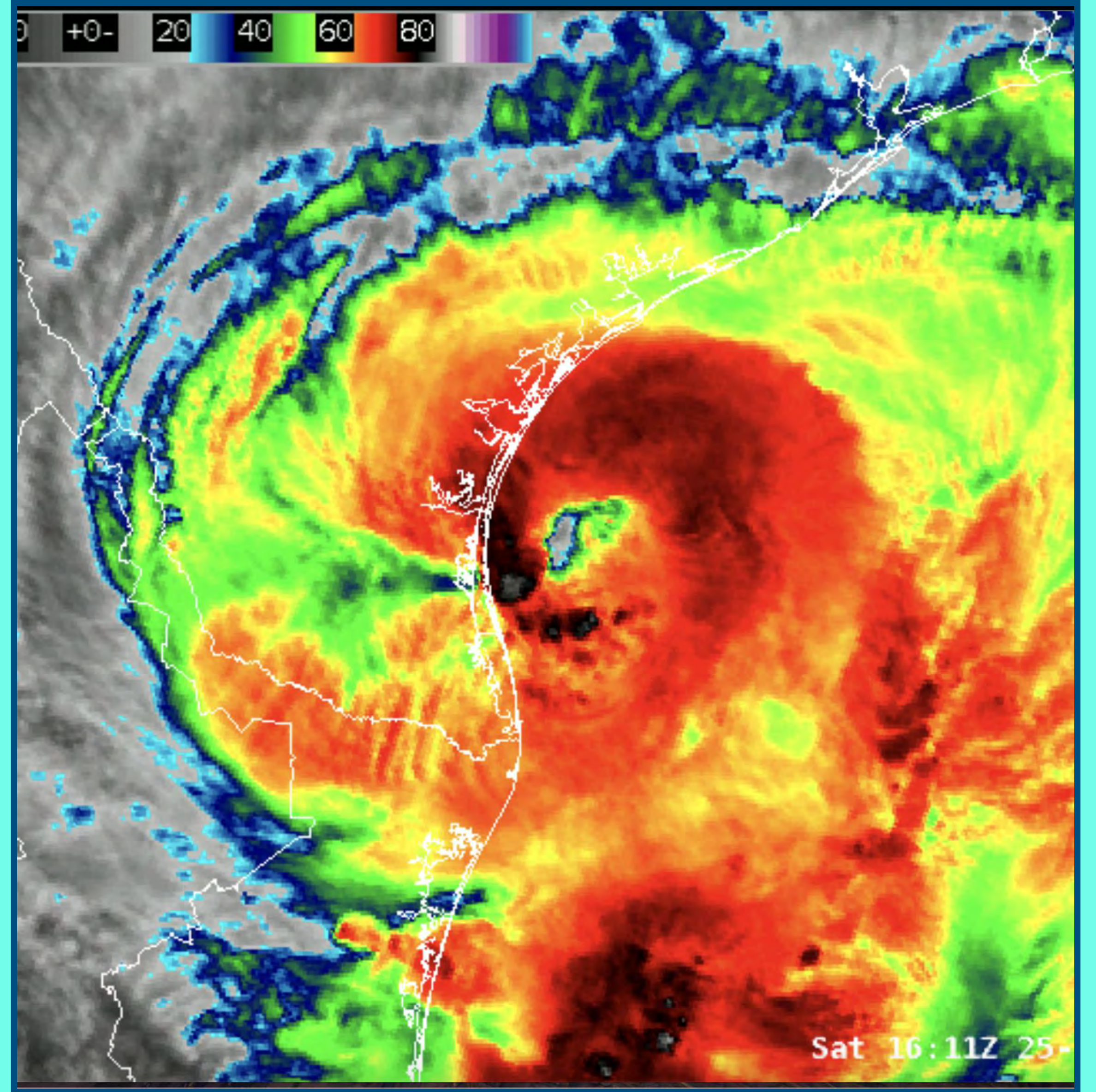


Above: National Hurricane Center best track of Hurricane Hanna.

Source: National Hurricane Center



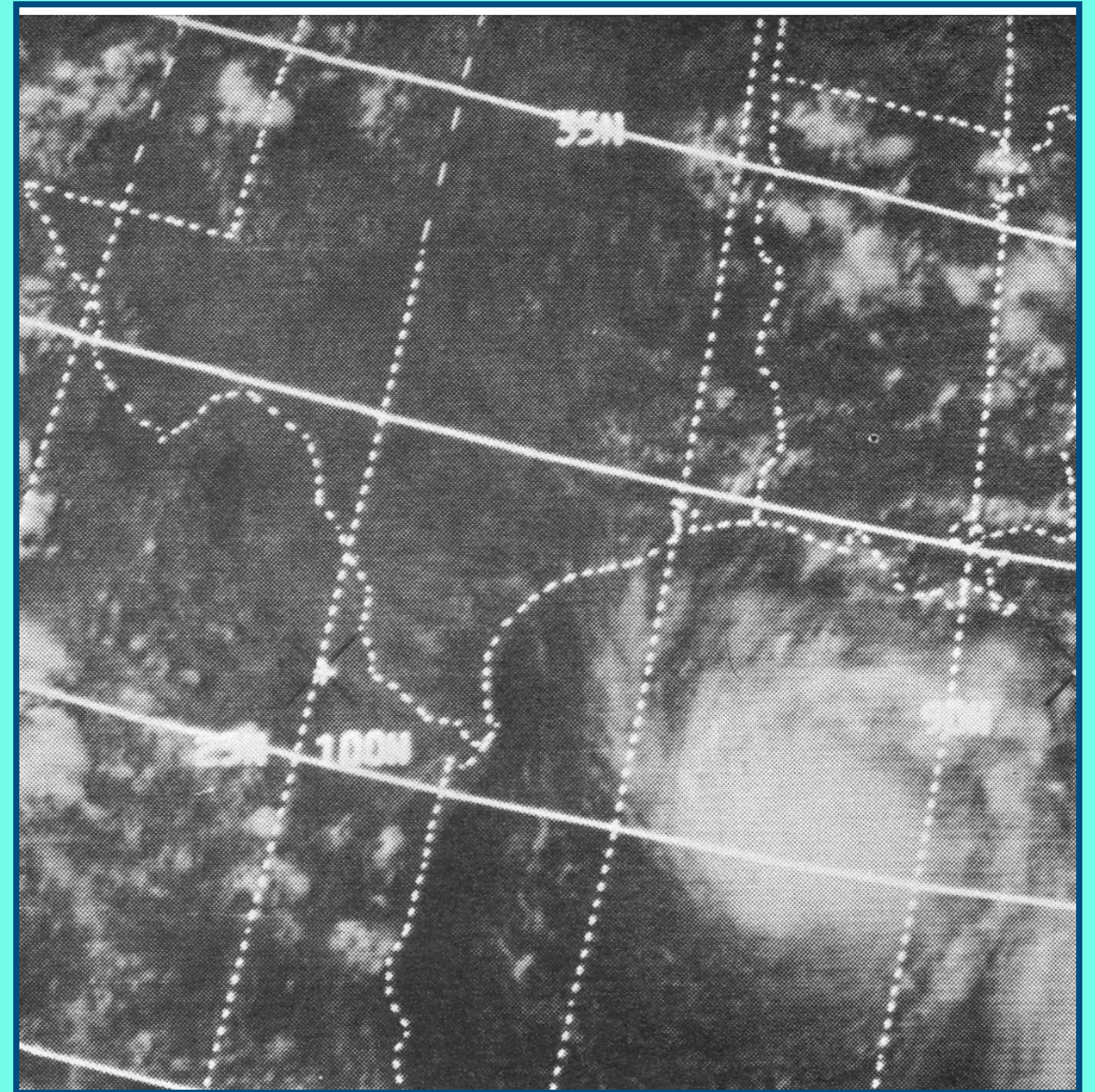
Source: PINS



Source: CRP NWS Office

Some Conclusions

- Higher risk: July-September
- Higher risk: Long-track storms from Yucatan Peninsula through Florida Keys
- Higher risk: Northeast quadrant of storm (generally)
- Add one category to expected intensity at landfall!
- Know your home's elevation!
- Have a checklist for preparation, and a checklist for evacuation!
- **ANY** hurricane is dangerous!



Source: National Hurricane Center

“The key to severe weather forecasting is to know when to worry.” (author unknown)

Questions?



Corpus Christi Geological Society Papers available for purchase at the Texas Bureau of Economic Geology

Note: Publication codes are hyperlinked to their online listing in [The Bureau Store](http://begstore.beg.utexas.edu/store/) (<http://begstore.beg.utexas.edu/store/>).

Cretaceous-Wilcox-Frio Symposia, D. B. Clutterbuck, Editor, 41 p., 1962.
[CCGS 002S](#) \$15.00

Type Logs of South Texas Fields, Vol. I, Frio Trend. Compiled by Don Kling. Includes 134 fields. 158 p., 1972. Ring binder.
[CCGS 015TL](#) \$25.00

Type Logs of South Texas Fields, Vol. II, Wilcox (Eocene) Trend. Compiled by M. A. Wolbrink. 98 p., 1979. Ring binder.
[CCGS 016TL](#) \$25.00

Field Trip Guidebooks

South Texas Uranium. J. L. Cowdrey, Editor. 62 p., 1968.
[CCGS 102G](#) \$12.00

Hidalgo Canyon and La Popa Valley, Nuevo Leon, Mexico. CCGS 1970 Spring Field Conference. 78 p., 1970.
[CCGS 103G](#) \$8.00

Padre Island National Seashore Field Guide. R. N. Tench and W. D. Hodgson, Editors. 61 p., 1972.
[CCGS 104G](#) \$5.00

Triple Energy Field Trip, Uranium, Coal, Gas—Duval, Webb & Zapata Counties, Texas. George Faga, Editor. 24 p., 1975.
[CCGS 105G](#) \$10.00

Minas de Golondrinas and Minas Rancherías, Mexico. Robert Manson and Barbara Beynon, Editors. 48 p. plus illus., 1978.
[CCGS 106G](#) \$15.00

Portrero Garcia and Huasteca Canyon, Northeastern Mexico. Barbara Beynon and J. L. Russell, Editors. 46 p., 1979.
[CCGS 107G](#) \$15.00

Modern Depositional Environments of Sands in South Texas. C. E. Stelling and J. L. Russell, Editors. 64 p., 1981.
[CCGS 108G](#) \$15.00

Geology of Peregrina & Novillo Canyons, Ciudad Victoria, Mexico, J. L. Russell, Ed., 23 p. plus geologic map and cross section, 1981.
[CCGS 109G](#) \$10.00

Geology of the Llano Uplift, Central Texas, and Geological Features in the Uvalde Area. Corpus Christi Geological Society Annual Spring Field Conference, May 7-9, 1982. Various paginated. 115 p., 53 p.
[CCGS 110G](#) \$15.00

Structure and Mesozoic Stratigraphy of Northeast Mexico, prepared by numerous authors, variously paginated. 76 p., 38 p., 1984.
[CCGS 111G](#) \$15.00

Geology of the Big Bend National Park, Texas, by C. A. Berkebille. 26 p., 1984.
[CCGS 112G](#) \$12.00

GEO LINK POST

<http://www.lib.utexas.edu/books/landsapes/index.php> Free service. Rare, fragile, hard-to-find, public domain documents covering various topics about the landscape of Texas. Includes the Texas Geological Survey from 1887 until 1894.

USGS TAPESTRY OF TIME AND TERRAIN <http://tapestry.usgs.gov> The CCGS is donating to all of the 5th and 6th grade schools in the Coastal Bend. Check it out--it is a spectacular map. You might want to frame one for your own office. The one in my office has glass and a metal frame, and It cost \$400 and it does not look as good as the ones we are giving to the schools.

FREE TEXAS TOPOS'S <http://www.tnris.state.tx.us/digital.htm> these are TIFF files from your state government that can be downloaded and printed. You can ad them to SMT by converting them first in Globalmapper. Other digital data as well.

FREE NATIONAL TOPO'S [http://store.usgs.gov/b2c_usgs/b2c/start/\(xcm=r3standardpitrex_prd\)/do](http://store.usgs.gov/b2c_usgs/b2c/start/(xcm=r3standardpitrex_prd)/do) go to this webpage and look on the extreme right side to the box titled TOPO MAPS DOWNLOAD TOPO MAPS FREE.

<http://www.geographynetwork.com/> Go here and try their top 5 map services. My favorite is 'USGS Elevation Date.' Zoom in on your favorite places and see great shaded relief images. One of my favorites is the Great Sand Dunes National Park in south central Colorado. Nice Dunes.

<http://antwrp.gsfc.nasa.gov/apod/asropix.html> Astronomy picture of the day--awesome. I click this page everyday.

<http://www.spacimaging.com/gallery/ioweek/iow.htm> Amazing satellite images. Check out the gallery.

<http://www.ngdc.noaa.gov/seg/topo/globegal.shtml> More great maps to share with kids and students.

www.ccgeo.org Don't forget we have our own we page.

<http://terra.nasa.gov/gallery/> Great satellite images of Earth.

www.ermaper.com They have a great free downloadable viewer for TIFF and other graphic files called ER Viewer.

<http://terrasrver.com> Go here to download free aerial photo images that can be plotted under your digital land and well data. Images down to 1 meter resolution, searchable by Lat Long coordinate. Useful for resolving well location questions.

TYPE LOGS OF SOUTH TEXAS FIELDS by Corpus Christi Geological Society

NEW (2019)TYPE LOGS IN RED;

ARANSAS COUNTY

Aransas Pass/McCampbell Deep
Bartell Pass
Blackjack
Burgentine Lake
Copano Bay, South
Estes Cove
Fulton Beach
Goose Island
Half Moon Reef
Nine Mile Point
Rockport, West
St. Charles
Tally Island
Tract 831-G.O.M. (offshore)
Virginia

BEE COUNTY

Caesar
Mosca
Nomanna
Orangedale(2)
Ray-Wilcox
San Domingo

Tulsita Wilcox

Strauch_Wilcox

BROOKS COUNTY

Ann Mag
Boedecker
Cage Ranch
Encintas
ERF

Gyp Hill
Gyp Hill West
Loma Blanca
Mariposa
Mills Bennett
Pita
Tio Ayola
Tres Encinos

CALHOUN COUNTY

Appling
Coloma Creek, North
Heyser
Lavaca Bay
Long Mott
Magnolia Beach
Mosquito Point
Olivia
Panther Reef
Powderhorn
Seadrift, N.W.
Steamboat Pass
Webb Point
S.E. Zoller

CAMERON COUNTY

Holly Beach
Luffles
San Martin (2)
Three Islands, East

Vista Del Mar

COLORADO COUNTY

E. Ramsey
Graceland N. Fault Blk
Graceland S. Fault Blk

DEWITT COUNTY

Anna Barre
Cook
Nordheim

Smith Creek
Warmesley
Yorktown, South

DUVAL COUNTY

DCR-49
Four Seasons
Good Friday
Hagist Ranch
Herbst

Loma Novia
Petrox
Seven Sisters

Seventy Six, South
Starr Bright, West

GOLIAD COUNTY

Berclair
North Blanconia
Bombs
Boyce
Cabeza Creek, South
Goliad, West

St Armo

Terrell Point

HIDALGO COUNTY

Alamo/Donna
Donna
Edinburg, West
Flores-Jeffress
Foy

Hidalgo

LA Blanca

McAllen& Pharr
McAllen Ranch
Mercedes

Monte Christo, North
Penitas
San Fordyce
San Carlos

San Salvador
S. Santallana
Shary

Tabasco
Weslaco, North
Weslaco, South

JACKSON COUNTY

Carancahua Creek
Francitas
Ganado & Ganado Deep
LaWard, North
Little Kentucky

lost now found

Maurbro

StewartSwan Lake

Swan Lake, East

Texana, North

West Ranch

JIM HOGG COUNTY

Chaparosa

Thompsonville,N.E.

JIM WELLS COUNTY

Freeborn
Hoelscher
Palito Blanco

Wade City

KARNES COUNTY

Burnell

Coy City

Person

Runge

KENEDY COUNTY

Candelaria

Julian

Julian, North

Laguna Madre

Rita

Stillman

KLEBERG COUNTY

Alazan

Alazan, North

Big Caesar

Borregos

Chevron (offshore)

Laguna Larga

Seeligson

Sprint (offshore)

LA SALLE COUNTY

Pearsall

HAWKVILLE:EAGLEFORD

LAVACA COUNTY

Hallettsville

Hope

Southwest Speaks

Southwest Speaks Deep

LIVE OAK COUNTY

Atkinson

Braslau

Chapa

Clayton

Dunn

Harris

Houdman

Kittie West-Salt Creek

Lucille

Sierra Vista

Tom Lyne

White Creek

White Creek, East

MATAGORDA COUNTY

Collegeport

MCMULLEN COUNTY

Arnold-Weldon

Brazil

Devil's Waterhole

Hostetter

Hostetter, North

NUECES COUNTY

Agua Dulce (3)

Arnold-David

Arnold-David, North

Baldwin Deep

Calallen

Chapman Ranch

Corpus Christi, N.W.

Corpus Christi West C.C.

Encinal Channel

Flour Bluff/Flour Bluff, East

GOM St 9045(offshore)

Indian Point

Mustang Island

Mustang Island, West

Mustang Island St.

889S(offshore)

Nueces Bay/Nueces Bay

West

Perro Rojo

Pita Island

Ramada

Redfish Bay

Riverside

Riverside, South

Saxet

Shield

Stedman Island

Turkey Creek

REFUGIO COUNTY

Bonnieview/Packery Flats

Greta

La Rosa

Lake Pasture

Refugio, New

Tom O'Connor

SAN PATRICIO COUNTY

Angelita East

Commonwealth

Encino

Enos Cooper

Geronimo

Harvey

Hiberia

Hodges

Mathis, East

McCampbell Deep/Aransas Pass

Midway

Midway, North

Odem

Plymouth

Portilla (2)

Taft

Taft, East

White Point, East

STARR COUNTY

El Tanque

Garcia

Hinde

La Reforma, S.W.

Lyda

Ricaby

Rincon

Rincon, North

Ross

San Roman

Sun

Yturria

VICTORIA COUNTY

Helen Gohike, S.W.

Keeran, North

Marcado Creek

McFaddin

Meyersville

Placedo

WEBB COUNTY

Aquilares/Glen Martin

Big Cowboy

Bruni, S.E.

Cabazon

Carr Lobo

Davis

Hirsch

Juanita

Las Tiendas

Nicholson

O'Her

Olmitos

Tom Walsh

WHARTON COUNTY

Black Owl

WILLACY COUNTY

Chile Vieja

La Sal Vieja

Paso Real

Tenerias

Willamar

ZAPATA COUNTY

Benavides

Davis, South

Jennings/Jennings, West

Lopeno

M&F

Pok-A-Dot

ZAVALA COUNTY

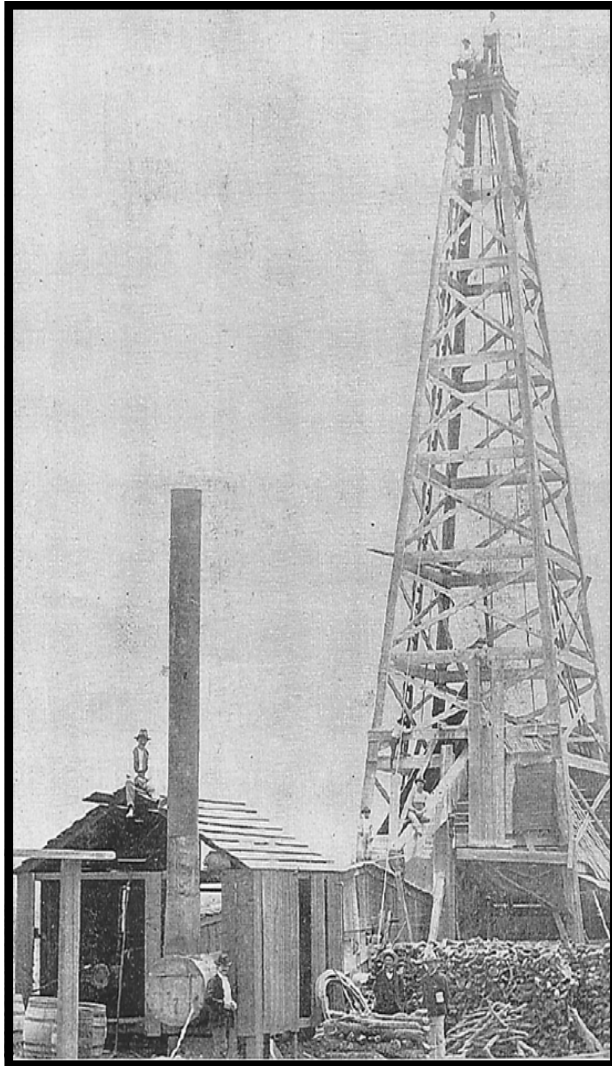
El Bano

Call Coastal Bend Geological Library, Letty: 361-883-2736
1 log – \$10 each, 5-10 logs \$9 each and 10 + logs \$8.00 each – plus postage

OIL MEN
TALES FROM THE SOUTH TEXAS OIL PATCH
DVD
MEMBER PRICE \$25
NON-MEMBER \$30



To Order DVD
Sebastian Wiedmann
swiedmann.geo@gmail.com
If mailed add \$5.00



Wooden Rigs—Iron Men
The Story of Oil & Gas in South
Texas
By Bill & Marjorie K. Walraven
Published by the
Corpus Christi Geological Society

Corpus Christi Geological Society
Sebastian Wiedmann--
swiedmann.geo@gmail.com

Order Form

SALE \$55.00

Mail order form for Wooden rigs-Iron Men. The price is \$75 per copy,
if mailed \$65 per copy.

Name _____

Address _____

City, State, Zip _____

No. of books _____

Amount enclosed _____

Send to Corpus Christi Geological Society Book Orders

4425 Driftwood PL..

Corpus Christi, TX. 78411 Tax exempt# if applicable _____



Dawn S. Bissell
Geoscientist

Advent Geoscience Consulting, LLC
Corpus Christi, TX 78411

Phone: 361-960-2151
Email: bissells@swbell.net

MUD LOGGING SERVICE

WEL-LAB
Since 1961

MIKE BULLARD

(361) 221-9717 Office (361) 211-9715 Fax
(361) 522-1245 Cell P.O. Box 1011
E-Mail md_bullard@sbcglobal.net Kingsville, Tx 78363

James L. Claughton
CONSULTING GEOLOGIST

615 North Upper Broadway Suite 1935
Corpus Christi, Texas 78401-0779
Cell | 361-960-2014
clausole@sbcglobal.net

Imagine Resources, LLC

Finding South Texas Hydrocarbons since 1982

Frank G Cornish

President/Consultant
555 N Carancahua, Ste 1230
Corpus Christi, Tx 78401

TEL | 361-563-9184 EMAIL | Frank.cornish@gmail.com
WEB | <http://imagineresourcesllc.com/>



LEIGHTON DEVINE
Exploration Manager

p: (361) 884-8824 ext. 412 555 N. Carancahua, Suite 1230
c: (361) 510-8872 Corpus Christi, Texas 78401
ldevine@suemaur.com www.suemaur.com

FRONTERA EXPLORATION CONSULTANTS

*Geological and Geophysical Interpretation
Regional Geoscience Investigations*

THOMAS E. EWING, PH.D.
AAPG CPG #4536; Texas Lic. Geol. #1320

19240 Redland Road, Suite 250, San Antonio TX 78259
(210) 410-9587; (210) 824-6423 FAX
lewing@fronteraexploration.com

Since 1982

MATTHEW FRANEY
Consulting Geologist

AAPG CPG #6342

VENTEX OIL & GAS, INC.

711 N. Carancahua St. Suite 512 361-563-6327
Corpus Christi, TX 78401-0532 mfraney57@att.net

COWBOY
EXPLORATION

www.sellnonop.com

Buying Producing Non-Op WI Nationwide
Cameron Goodwin, Managing Partner
512-717-4491
Cameron@CowboyExploration.com

Robert Graham
361-774-3635

RGR ENERGY, LLC

Oil & Gas Exploration and Development
P. O. Box 1843, Corpus Christi, TX 78403
grexploration@gmail.com



HART EXPLORATION, LLC.

RICK HART
Geologist / Owner

P.O. Box 3576 Cell: 512-626-3053
Bandera, Texas 78003 Email: hartexploration@aol.com



DENNIS MOORE

Log Analyst
Wireline Supervision
(361) 946-6037

Patrick Nye
President
patrick@nyesp.us

Office: (361) 452-1435
Cell: (361) 698-1089
Res: (361) 238-2146

NYE
Exploration & Production, LLC

802 N. Carancahua, Suite 1230
First Bank Plaza
Corpus Christi, TX 78401
www.nyexp.us



Jeff Osborn
Geologist

Herradura Petroleum, Inc.
14493 SPID, Ste A, #539
Corpus Christi, TX 78418

361-637-2349 jeff@herradurapetroleum.com

First Rock, Inc.
RGR Production First Rock I, LLC

Gregg Robertson

710 Buffalo St. Ste 402
Corpus Christi, TX 78401
361-884-0791

361-215-5559 - Cell
210-260-0300 - Cell
361-884-0863 - Fax
firstrockinc@msn.com

DSX
ENERGY

Doug Sartoris

Exploration Geologist / Managing Partner

800 North Shoreline Blvd.
Suite 2570 South
Corpus Christi, TX 78401

Office: 361-884-1150
Cell: 361-548-1150
doug@dsxenergy.com

SEBASTIAN P. WIEDMANN
GEOLOGIST

WILSON PLAZA WEST
606 N. CARANCAHUA, SUITE 500
CORPUS CHRISTI, TEXAS 78401

MOBILE (361) 946-4430
swiedmann.geo@gmail.com

YOUR CARD COULD BE HERE!
\$30 FOR 5 ISSUES. PRICES PRO-RATED. EMAIL LEIGHTON DEVINE AT
LDEVINE@SUEMAUR.COM