

BULLETIN

Corpus Christi Geological Society



and

Coastal Bend Geophysical Society



**January
2017
ISSN 0739 5620**

Compliments of
American Shoreline, Inc.



Specializing in
Oil & Gas Exploration
& Wind Energy

802 N. Carancahua
Frost Bank Plaza, Suite 1250
Corpus Christi, Texas 78401
(361) 888-4496

www.amshore.com



*****BLOOD DRIVE*****

THE BLOODMOBILE – IN **DECEMBER, 2016**
WILL BE AT SOME CONVENIENT LOCATIONS
PLEASE CALL 855-4943 for those locations or see below



Santa says: Don't be a Scrooge go out & Give some Blood!!

**ATTENTION!!!
FOR CURRENT SCHEDULES & LOCATIONS OF THE
BLOODMOBILES YOU CAN LOG ON TO:**

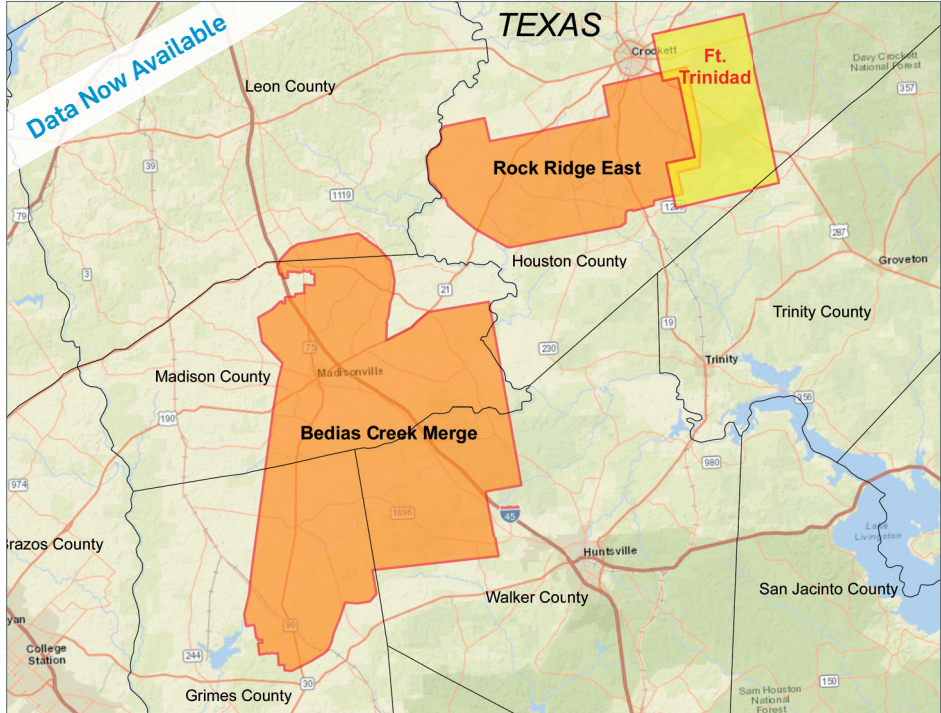
www.coastalbendbloodcenter.com

When you give blood: They have us listed as C.C. Geological Society. Our number with them is 4254 & it would be helpful if you can please give them that number also. *Mike Lucente approves this message.*



New Ft. Trinidad 3D Survey Houston and Trinity Counties, TX

YOU'VE ARRIVED



CGG offers the industry's most recent and technologically advanced multi-client data library in the world's key locations.

The best data, the right location, the right time!

Scott Tinley
+1 832 351 8544
scott.tinley@ggg.com

Cheryl Oxsheer
+1 832 351 8463
cheryl.oxsheer@ggg.com

in f t y i
cgg.com/ROP



TABLE OF CONTENTS

Blood Drive.....	1
Officers, Committees and Chairpersons for CCGS/CBGS.....	4 & 5
Calendar of Meetings and Events.....	6 & 7
CCGS President’s Letter.....	8
Corpus Christi Geological Society CC Brewery Pub Crawl.....	12
CBGS President’s Letter.....	13
Luncheon Meeting Announcement for January, 2017.....	16
Field Trip: The Rio Grande Delta & Its Surroundings; Frontiers of Geoscience and Development.....	20
Thank You to our sponsors for supporting the 2016 GCAGS/GCSSEPM Annual Convention and Exhibition.....	23
Fall 2016 Scholarship Awards.....	27
CCGS papers available for purchase at the Bureau of Economic Geology.....	36
Geo Link Post.....	37
Type Logs of South Texas Fields.....	38
Order Oil Men DVD.....	39
Wooden Rigs Iron Men.....	40
Professional Directory.....	41



CORPUS CHRISTI GEOLOGICAL SOCIETY

P.O. BOX 1068* C.C. TX. 78403

2016-2017

www.ccgeo.org

OFFICERS

President	Barbara Beynon	361-774-3369	bbeynon77@yahoo.com
President Elect			
Vice President	William Thompson	361-242-3113	arrangements@ccgeo.org
Secretary	Casey Mibb	361-726-1092	clmibb@yahoo.com
Treasurer	Austin Nye	361-452-1435	austin@nyexp.us
Past President	Mike Lucente	361-883-0923	mikel@impexploration.com
Councilor I	Rick Paige	361-884-8824	rickp@suemaur.com
Councilor II	Randy Bissell	361-885-0113	randyb@headington.com

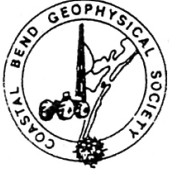
AAPG DELEGATE

EDITORS

Bulletin Editor	Marian Wiedmann	361-855-2542	wiedgulf@gmail.com
Bulletin Tech. Editor			
Web Master	Josh Pollard	361-654-3100	support@interconnect.net

GEOLOGICAL SOCIETY COMMITTEES & CHAIRPERSONS

Advertising/Bus. Cards	Robby Sterett	361-739-5618	robert.sterett@gmail.com
Arrangements	Wes Gisler & Will Graham	830-239-4651 361-885-0110	arrangements@ccgeo.org willg@headingtonenergy.com
Bloodmobile	Mike Lucente	361-883-0923	mikel@impexploration.com
Earth Day	Alan Costello	361-888-4792	acostello@royalcctx.com
Continuing Ed.	Stephen Thomas	361-660-8694	stthomas@spnaturalresources.com
Education	Dawn Bissell	361-960-2151	bissells@swbell.net
Scholarship	J. R. Jones	361-779-0537	jrjones5426@aol.com
Fishing Tournament	Leighton Devine	361-882-8400	ldevine@suemaur.com
History	Ray Govett	361-855-0134	ray30@hotmail.com
Membership	Dorothy Jordan Randy Bissell	361-885-0110 361-885-0113	dorothyj@headington.com randyb@headington.com
Type Logs	Frank Cornish	361-883-0923	frank.cornish@gmail.com
University Liaison	Casey Mibb Wesley Garcia	361-726-1092	clmibb@yahoo.com



COASTAL BEND GEOPHYSICAL SOCIETY
P.O. BOX 2741*C.C. TX. 78403
2016-2017

OFFICERS

President	Lonnie Blake	361-883-2831	lonnie_blake@eogresources.com
Vice President	Dr. Subbarao Yelisetti	361-593-4894	subbarao.yelisetti@tamuk.edu
Secretary/Treasurer	Matt Hammer	361-888-4792	mhammer@royalcctx.com
Golf Chairman	Fermin Munoz	361-960-1126	fmunoz04@hotmail.com
Scholarship Chairman	Ed Egger	361-947-8400	edegger69@gmail.com
Education	Dr. Robert Schneider		

**Visit the geological
web site at
www.ccgeo.org**

CCGS/CBGS JOINT MEETING SCHEDULE 2016-2017

September 2016							October 2016							November 2016						
S	M	T	W	Th	F	S	S	M	T	W	Th	F	S	S	M	T	W	Th	F	S
				1	2	3							1			1	2	3	4	5
4	5	6	7	8	9	10	2	3	4	5	6	7	8	6	7	8	9	10	11	12
11	12	13	14	15	16	17	9	10	11	12	13	14	15	13	14	15	16	17	18	19
18	19	20	21	22	23	24	16	17	18	19	20	21	22	20	21	22	23	24	25	26
25	26	27	28	29	30		23	24	25	26	27	28	29	27	28	29	30			
							30	31												

GCAGS Convention
"Explore The Future"
 September 18-20, 2016
 Corpus Christi, TX.

GCAGS Post-Convention
 Party & Society Kickoff
 Bar-B-Q
 Thursday, October 13
 5:30 to 8:00 p.m.

11:30am-1:00pm.
 Speaker: Bruce Moriarty,
 Principal Geophysical Advisor,
 Lumina Geophysical
 "Simultaneous Inversion of
 Spectrally-Broadened 3D
 Seismic Data: Case Study for
 the Olmos Unconventional
 Play, South Texas"

December 2016							January 2017							February 2017						
S	M	T	W	Th	F	S	S	M	T	W	Th	F	S	S	M	T	W	Th	F	S
				1	2	3	1	2	3	4	5	6	7			1	2	3	4	
4	5	6	7	8	9	10	8	9	10	11	12	13	14	5	6	7	8	9	10	11
11	12	13	14	15	16	17	15	16	17	18	19	20	21	12	13	14	15	16	17	18
18	19	20	21	22	23	24	22	23	24	25	26	27	28	19	20	21	22	23	24	25
25	26	27	28	29	30	31	29	30	31					26	27	28				

Combined
 November/December for the
 Holidays.

CCGS/CBGS Joint Meeting Schedule 2016-2017

March 2017							April 2017							May 2017						
S	M	T	W	Th	F	S	S	M	T	W	Th	F	S	S	M	T	W	Th	F	S
			1	2	3	4							1	1	2	3	4	5	6	
5	6	7	8	9	10	11	2	3	4	5	6	7	8	7	8	9	10	11	12	13
12	13	14	15	16	17	18	9	10	11	12	13	14	15	14	15	16	17	18	19	20
19	20	21	22	23	24	25	16	17	18	19	20	21	22	21	22	23	24	25	26	27
26	27	28	29	30	31		23	24	25	26	27	28	29	28	29	30	31			
							30													

Combined
February/March for Spring
Break

Calendar of Meetings and Events

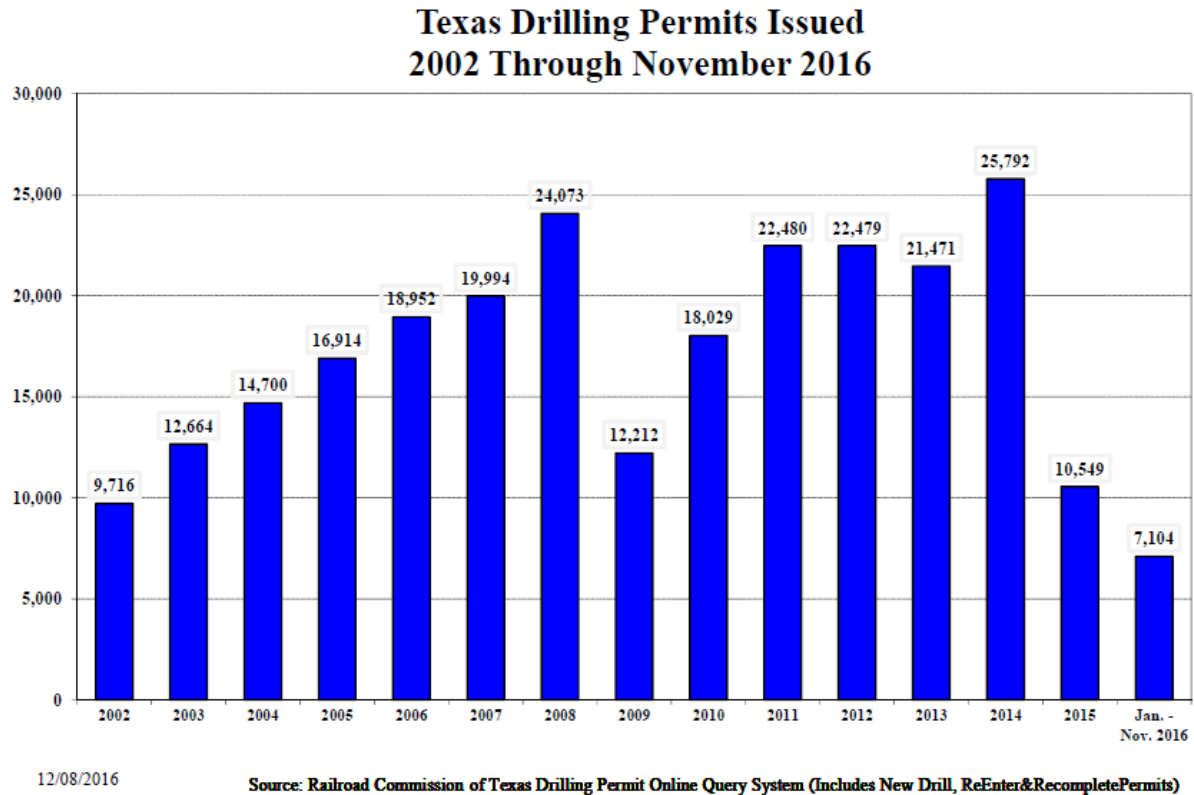
Calendar of Area Monthly Meetings

Corpus Christi Geological/Geophysical Society.....	Third Wed.—11:30a.m.
SIPES Corpus Christi Luncheons.....	Last Tues.—11:30a.m.
South Texas Geological Society Luncheons.....	Second Wed—noon San Antonio
San Antonio Geophysical Society Meetings.....	Fourth Tuesday
Austin Geological Society.....	First Monday
Austin Chapter of SIPES.....	First Thursday
Houston Geological Society Luncheons.....	Last Wednesday
Central Texas Section of Society of Mining, Metallurgy & Exp.....	2 nd Tues every other month in San Antonio

CCGS Vice President's Letter

We've closed another year in the books! I hope everyone has had a wonderful holiday season and a happy new year! It's been a down year for the industry overall, but I believe there is light around the corner. December, 2013, average crude oil spot price was approximately \$105/bbl; December, 2014, was \$60/bbl; December, 2015, was \$36/bbl. The Texas Natural Gas Industrial Price in December, 2013, was \$4.11/mcf; December, 2014, was \$4.50/mcf; December, 2015, was \$2.38/mcf. Present prices are \$51.81/bbl and \$3.39/MMBtu, looking up from a year ago.

According to the Railroad Commission of Texas, the total number of drilling permits issued in November of 2015 was 687, while 673 were issued in November 2016.



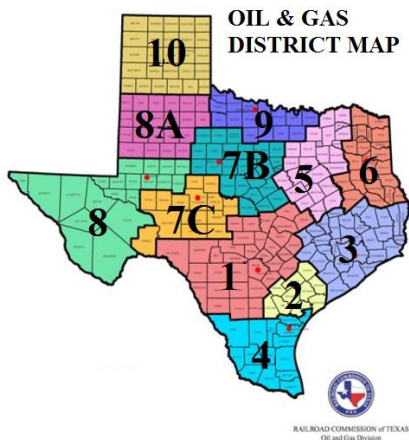
The number Total well completions for 2016, to date, was 9,923; half of the number of completions processed in 2015 (18,510). According to Baker Hughes, the rig count in Texas was 286 in December, representing 48% of all active rigs in the United States.

From January 2016 through September 2016, Texas produced 731.5 million barrels of oil, 103.5 million barrels of condensate, and 5.99 trillion MCF of gas. From January, 2015, through December, 2016, Texas produced 1.076 billion barrels of oil, 167.2 million barrels on condensate, and 8.79 trillion MCF of gas. Production rates show to be trending just slightly off from last year's record setting numbers, but not far.

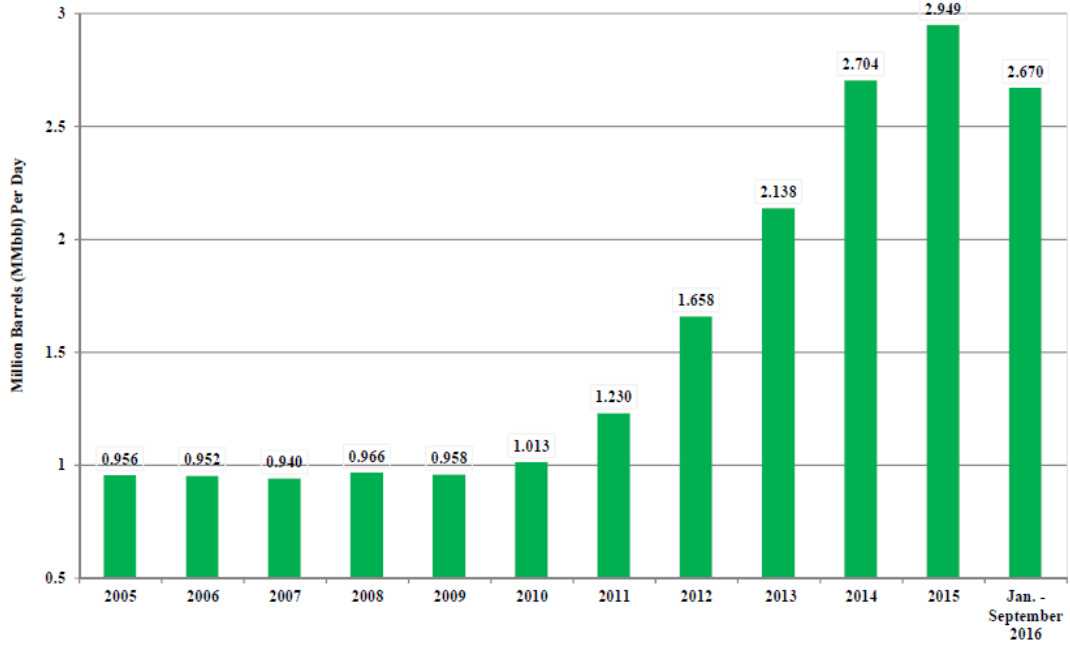
January 2016 - September 2016				
District	Oil (BBL)	Casinghead (MCF)	GW Gas (MCF)	Condensate (BBL)
1	143,192,421	264,399,911	724,974,768	33,097,082
2	115,965,801	278,639,456	281,361,764	29,692,903
3	24,694,792	45,359,531	150,344,625	5,118,791
4	2,237,732	4,017,395	395,483,471	5,779,629
5	5,562,168	8,439,061	225,924,012	141,930
6	6,527,706	47,129,916	648,672,887	3,912,569
6E	2,100,580	1,090,935	0	0
7B	7,787,716	13,164,484	17,662,612	103,603
7C	71,020,110	315,610,249	96,119,257	461,263
8	259,145,013	634,403,577	263,914,394	16,311,998
8A	74,487,815	84,744,484	6,831,923	48,507
9	8,236,242	35,712,089	1,055,959,059	1,945,281
10	10,526,150	63,574,797	322,233,214	6,883,246
TOTAL	731,484,246	1,796,285,885	4,189,481,986	103,496,802

January 2015 - December 2015				
District	Oil (BBL)	Casinghead (MCF)	GW Gas (MCF)	Condensate (BBL)
1	241,159,657	393,561,354	1,013,066,084	54,483,134
2	199,520,286	436,212,056	453,376,194	51,667,075
3	43,059,125	76,220,631	253,147,990	8,755,430
4	3,534,056	5,546,695	627,299,093	8,263,209
5	9,151,430	11,903,936	350,536,219	236,555
6	9,484,115	66,702,842	952,554,731	6,166,857
6E	3,492,397	1,848,710	0	0
7B	11,790,894	20,350,450	27,516,749	164,879
7C	96,190,484	401,562,687	144,145,557	675,401
8	320,843,466	782,529,023	349,217,910	20,791,209
8A	104,175,017	111,234,383	10,670,636	75,282
9	13,356,552	60,952,313	1,610,863,847	4,002,489
10	20,553,027	107,652,449	518,999,242	11,935,998
TOTAL	1,076,310,506	2,476,277,529	6,311,394,252	167,217,518

Source: Railroad Commission of Texas Production Data Query System (PDQ)



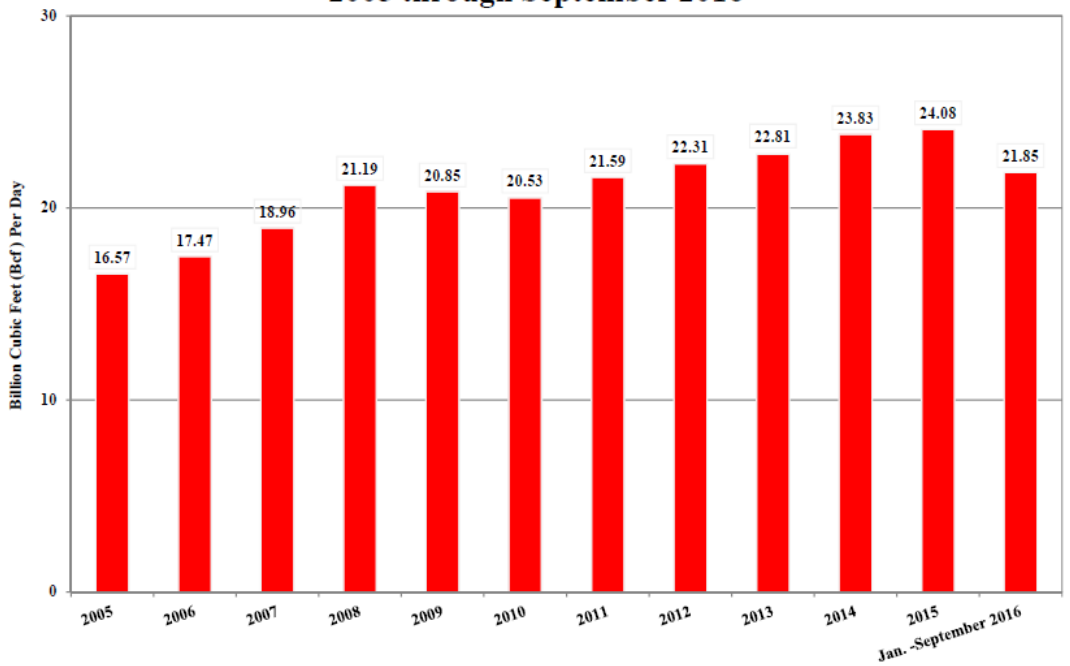
Texas Oil Production 2005 through September 2016



11/28/2016

Source: Railroad Commission of Texas Production Data Query System (PDQ)

Texas Total Natural Gas Production 2005 through September 2016



11/28/2016

Source: Railroad Commission of Texas Production Data Query System (PDQ)

The 2016 year was very successful for the Society. We had an excellent turnout for the Gulf Coast Association of Geological Society Annual Convention, which we hosted this year. While we didn't receive any proceeds from GCAGS 2016, the convention was a great success! We thank Dawn Bissell for her leadership and relentless drive in organizing the convention, as well as Randy for his patience and excellent poster session on the Geology of Barbados! That was some very "tasty" geology!

We have a couple of excellent fundraisers coming up during the 2017 year: a field trip February 11-12, 2017, to the Rio Grande Delta and surrounding areas, lead by Thomas Ewing and Juan Gonzalez, as well as a local brewery pub crawl to visit the area's finest craft breweries on February 18, 2017! Make sure to keep your calendars open and save the dates!

A handwritten signature in blue ink that reads "W. Thompson 1-6.". The signature is fluid and cursive, with a large initial "W" and a trailing flourish.

William Thompson
Vice President, CCGS

CORPUS CHRISTI GEOLOGICAL SOCIETY CC BREWERY PUB CRAWL

SAVE THE DATE!!!!
SATURDAY AFTERNOON - FEBRUARY 18, 2017
MORE DETAILS TO FOLLOW!!!!





CBGS President's Letter

News -

Contraction of the seismic service industry continues. Oil is above \$50, and Gas is above \$3. Will it stay there? Will OPEC members do what they say they are going to do?

TAMUK will offer a Kingdom Class on Tuesday evenings, 6:30-9:15 PM. This is available to the professional community as well as our students. You can sign up as a 'transient' student in order to take classes without actually enrolling in the school. If anyone in the professional community wishes to sign up for this, please contact the instructor, Robert Schneider Robert.Schneider@tamuk.edu

CBGS Business -

CBGS would like to do a Geophysical Technical Seminar. We are looking at a date in March. Seismic Attributes has been suggested. Other suggestions are welcome.

Education/Events -

- GSH

There are interesting topics in Land Seismic Data Acquisition, Processing and Inversion Webinar, Houston, Feb 28-Mar3.

-There are numerous technical luncheons if you happen to be in Houston. Check the following link: [Geophysical Society of Houston Calendar](#)

-CBGS has a revenue sharing agreement with GSH. Make sure to mention CBGS if you register for GSH events.

- HGS

Mudrocks Conference, Houston, Mar 7-8, 2017

- SEG

SEG has 450+ eLearning courses online from \$0.99 to \$150.00(most expensive I saw). <http://www.seg.org/professional-development/seg-on-demand>

Annual SEG Convention, Houston, Sept 24-27

- AAPG

Deep water and Shelf Reservoirs: New Technologies for New Understanding, Houston, Jan. 24-25.

Annual AAPG Convention, Houston, April 3-5.

Monthly Saying

“I know enough of the world now to have almost lost the capacity of being much surprised by anything”

— [Charles Dickens](#), [David Copperfield](#)

Texas Oil and Gas Info	Current Month	Last Month	Difference	
Texas Production	MMBO/BCF	MMBO/BCF	MMBO/BCF	
Oil	89.8	91.5	-1.7	Aug
Condensate	11.1	11	0.1	
Gas	657	668	-11	Aug
	Current Month	Yr to date - 2016	Yr to date - 2015	
Texas Drilling Permits	855	6,431	9,135	Oct
Oil wells	211	1,840	2,228	
Oil and Gas	562	3,858	5,704	
Gas wells	45	334	677	
Other	11	106	126	
Total Completions	668	9,405	17,545	Oct
Oil Completions	445	7,041	14,014	
Gas Completions	203	1,885	2,486	
New Field Discoveries	2	19	56	
Other	20	479	1,045	

Lonnie Blake
CBGS President

SPONSORS

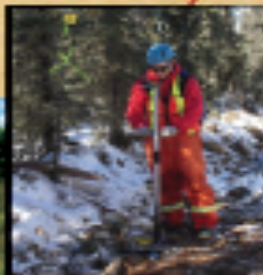
KNOWLEDGE REVEALED

PURPOSE DRIVEN

- Unrivaled land seismic acquisition capabilities
- Specific solutions for all terrains and environments (land, shallow water/transition zone and OBC)
- Purpose driven crews with proven experience around the world
- Processing and Interpretation services revealing the project knowledge you need
- Full azimuth 3D and 3C coverage in unconventional resource plays
- Multi-Client opportunities in North America, Latin America and Australasia
- Proven experience in:
 - Azimuthal anisotropy resolution and fracture identification
 - Multicomponent processing
 - AVO processing and inversion



INNOVATIVE
GEOPHYSICAL
SOLUTIONS



geokinetics.com



CORPUS CHRISTI GEOLOGICAL SOCIETY
COASTAL BEND GEOPHYSICAL SOCIETY



LUNCHEON MEETING ANNOUNCEMENT

WEDNESDAY, JANUARY 18, 2017

-
- Location:** Congressman Solomon P. Ortiz International Center, 402 Harbor Drive, Corpus Christi, TX 78401 <http://ortizcenter.com>
- Bar Sponsor:** To be announced (*sponsors needed!*)
- Student Sponsor:** Core Laboratories and Corpus Christi Geological Society
- Time:** 11:30 am Bar, Lunch follows at 11:45 am, Speaker at 12:00 pm
- Cost:** \$25.00 (additional \$10.00 surcharge without reservation; No-shows may be billed and non-RSVP attendees cannot be guaranteed a lunch); **FREE** for students with reservation (discounted by our generous sponsors)!
- Reservations:** Please **RSVP** by 4PM on the FRIDAY before the meeting!
E-Mail: wes@gislerbrotherslogging.com

Please note that luncheon RSVPs are a commitment to the Ortiz Center and must be paid even if you can't attend the luncheon.



<http://www.corelab.com>



<http://www.ccgeo.org>

SPONSORSHIPS OPPORTUNITIES ARE AVAILABLE!

**IF YOU WOULD LIKE TO SPONSOR PINT NIGHT OR LUNCHEON BAR, PLEASE
DROP US A LINE AT:**

arrangements@ccgeo.org

Integrating Geological, Petrophysical & Seismic Rock Property Data to Identify Prospective Areas and High-grade Locations for New Wells in a Shallow Water Carbonate Reservoir in the Mexcian GOM

Presented by: ***Speaker to be Determined***

Summary

New technologies in seismic acquisition, processing and reservoir characterization are allowing for a better understanding of hydrocarbon reservoirs. The ability to implement this complete technological value chain allows us to tackle the most complex exploration and development projects. The focus of this study was a shallow water carbonate reservoir located in the southern Gulf of Mexico.

The primary objective of the reservoir characterization was to identify and quantify the generation of secondary porosity within the carbonate reservoir. In the target reservoir, porosity has been enhanced as a combined result of fractures, dissolution voids (causing vuggy to cavernous porosity) and dolomitization of the original limestone. The geological processes responsible for this porosity enhancement are complex and include both regional and local tectonics together with a complex diagenetic history. Understanding the significance of the altered seismic data response associated with the effects of these geological processes is critical to the understanding of the geological model.

A broadband high-density wide-azimuth (HD-WAZ) survey was acquired targeting the shallow water reservoir. Extended seismic bandwidths provided by the broadband acquisition, improved illumination from the wide-azimuth (WAZ) configuration and high spatial resolution made possible by the dense acquisition technique produced visually compelling imaging and reservoir results. A fully integrated reservoir-oriented processing sequence was applied to the data to facilitate the detailed reservoir characterization study.

Upon completion of the acquisition and reservoir-driven seismic processing stages, the reservoir characterization study was initiated and divided into three phases, as shown in Figure 1. The first phase focused on the generation of geometrical attributes, spectral decomposition and initial fracture analysis based on Horizontal Transverse Isotropy (HTI). During phase two, geological and petrophysical analyses were carried out on well data to identify reservoir properties such as porosity, lithology and fracturing. This information, combined with the subsequent rock physics analysis, allowed for the calibration of well data to seismic attribute volumes derived from elastic and azimuthal inversion processes. The last phase integrated and analyzed geological, petrophysical and seismic data to identify prospective areas and high-grade locations for new wells

The inclusion of geological information into the interpretation phase, along with petrophysical and seismic information significantly enhanced the results. Information obtained from geological studies, including sedimentological core description, petrographic and diagenetic analysis, and structural and fracture studies, provided considerable insight into the reservoir and became an important tool for interpretation of seismic attributes.

Ultimately a reservoir classification scheme was selected utilizing seismic lithology and porosity volumes. A single seismic volume was created to assist in the creation of an integrated geological model and used to support field development.

About our Presenter:



www.cgg.com

SPONSORS

GeoSteering LLC
www.GeoSteering.com

info@geosteering.com

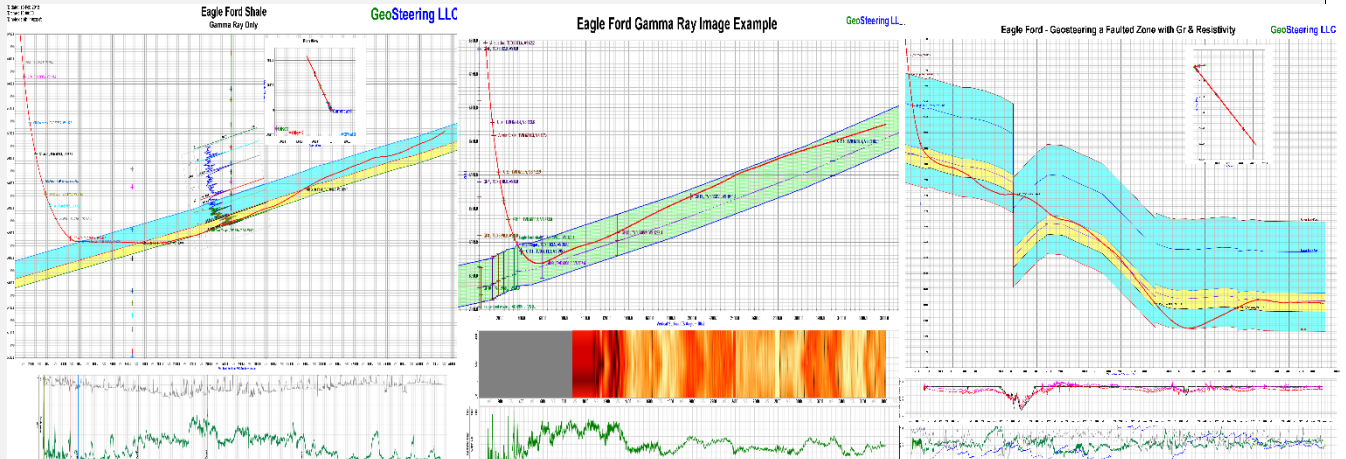
281-573-0500

Geosteering in the USA and Internationally since 2002

Steering with GR

Steering with Images

Steering with Resistivity



Experience in Texas

Austin Chalk, Barnett, Buda, Caddo, Devonian, Eaglebine / Woodbine, Eagle Ford, Georgetown, Granite Wash, Permian (Delaware, Midland), Smithwick



Since 1905

Royal Exploration Company, Inc.

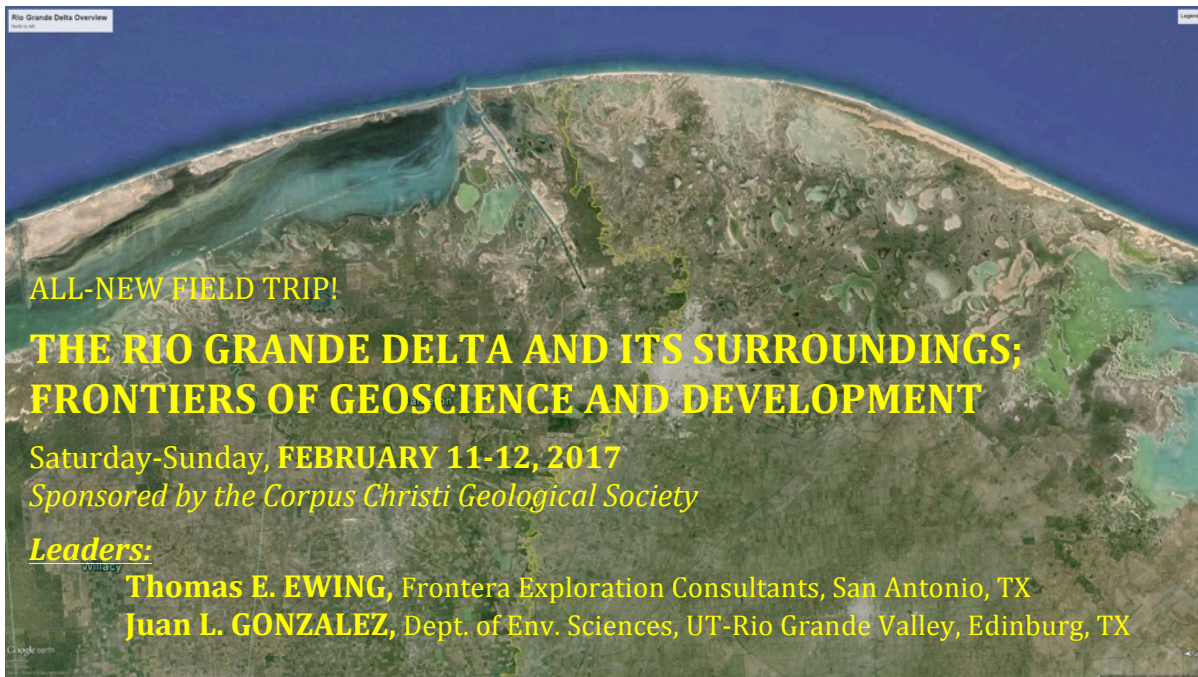
500 N Shoreline Blvd, Suite 807 N
Corpus Christi, Texas 78401-0336

Alan Costello – Geologist
acostello@royalcctx.com

Matt Hammer – Exploration Manager
mhammer@royalcctx.com

Telephone: 361/888-4792

Fax: 361/888-8190



Join your colleagues on a two-day exploration of the Rio Grande Delta, a unique delta-shoreline complex at the southern tip of Texas.

The Rio Grande delta is one of the major deltas of North America. Over 1,600,000 people live on the Holocene delta plain and its Pleistocene ancestors, yet geologic knowledge is limited.

The delta was formed by the sediment-rich Rio Grande/Rio Bravo during the Altithermal. The river carried huge but irregular flows into a semiarid environment. Eolian activity has extensively modified the delta plain. Human settlement and infrastructure has exploited the delta and its river, such that recovering natural conditions and values is a present challenge. Major historical developments, including Mexican War and Civil War battle sites, will be addressed as well.

Combining available geologic information with global satellite photography gives a balanced view of an important delta. But a lot of work remains to be done! Come help define the problems and the ways we can resolve them.

We will visit:

- The South Texas eolian sand sheet and Sal del Rey, an historic salt deposit
- Lagunas, esteros, and distributary channels in the Holocene floodplain
- Clay dunes and the 'hilly delta'; erosion and accretion
- Transgressive shoreline at Boca Chica and South Padre
- Irrigation and drainage features, and preserved battlefields
- Thick Oligocene ash in the upper valley-side bluffs near Rio Grande City

Logistics: Trip departs from Corpus Christi, TX 9am Saturday (place TBA), and returns to Corpus Christi, TX about 6:30 pm Sunday. Bus transportation, hotel (double occupancy), guide materials, breakfast burritos, lunches, and water are provided. You cover: dinner, personal items.

Cost: Estimated at \$300, minimum 15 participants. More details to follow.

Contact: *If you're coming, please contact the trip leaders:*

- Thomas Ewing tewing@fronteraexploration.com
- Juan Gonzalez juan.l.gonzalez@utrgv.edu
- Dawn Bissell bissells@swbell.net

THE RIO GRANDE DELTA AND ITS SURROUNDINGS; FRONTIERS OF GEOSCIENCE AND DEVELOPMENT



Dune ridge at Boca Chica, transgressing mud flats;



The hilly delta;



Algal mats in an estero;



Resaca de las Palmas, an old Rio Grande distributary;




Anzalduas Dam, flood and irrigation structure;



Thick Catahoula ash under Goliad gravels at Rio Grande City.

SPONSORS



Nueces Energy, Inc.
P.O. Box 252
Corpus Christi, Texas 78403
Office: (361) 884-0435
Fax: (361)-654-1436
www.nuecesland.com

Nueces Energy, Inc. is a complete land services company in the business of providing professional landmen and project management to various energy related jobs primarily in the oil and gas industry.

With over 30 years of industry experience, we specialize in determining surface and subsurface ownership and negotiating and acquiring contracts, rights of way agreements, and easements to provide our clients with the legal right to explore and develop oil and gas resources. We provide a full service land company capable of managing any project no matter how large or small.



THUNDER EXPLORATION, INC.
Celebrating 30+ years of prospect generation and exploration in the following South Texas plays and trends.

Frio	San Miguel	Edwards
Jackson	Austin Chalk	Pearsall
Yegua	Eagle Ford	Sligo
Wilcox	Buda	Cotton Valley
Olmos	Georgetown	Smackover

Thunder is currently seeking non-operated working interest participation in projects and prospects.

Contact **Walter S. Light Jr.**
President/Geologist
713.823.8288
EMAIL: wthunderx@aol.com

Headington Oil Company is now...



HEADINGTON
ENERGY PARTNERS, LLC

Proudly operating in South Texas.

For more information contact:
Randy Bissell, randyb@headingtonenergy.com or call 361-885-0113



Offices in Corpus Christi, Sarita, and McKinney, Texas - Exploring and Developing properties
In South Texas, Permian Basin, East Texas & Oklahoma

**THANK YOU to our sponsors for supporting the
2016 GCAGS/GCSSEPM Annual Convention and Exhibition!
Your support in our current environment was critical and much appreciated.**

**Emerald
Chevron**

**Sapphire
American Shoreline, Inc
Anadarko
ExxonMobil
Suemaur E & P, LLC
Headington Energy Partners
StaBil Drill Specialties, LLC**

**Topaz
Aurora Minerals, LP
Thunder Exploration, Inc.
Gisler Brothers Logging
Nye Exploration & Production
Hydrate Energy International, LLC
EOG Resources
Aquila, LLC
Legend Exploration
American Bank
ALS
CGG
Tride Rideshare
Kemco**

**Patron
Orion Drilling Co., Inc.
Stalker Energy
SEI Seismic Exchange
SEIMAX Technologies
William M. Whiting
EGI-Seismic
Seitel
Mary J. Broussard
Frost Bank
Geokinetics
Anderson Oil
Dawson Geophysical Company
Leon E. Comeaux & Associates**

Thank You GCAGS 2016 Exhibitors!

South Texas Geological Society

gla@aeatx.com; <http://www.gcags2017.com>

Host of the 2017 GCAGS Annual Convention, Wednesday, Nov. 1–Friday, Nov. 3 (NOTE NEW PATTERN), San Antonio

AAPG

<http://www.aapg.org>; vbeighle@aapg.org

Providing publications, conferences, and education.

Advanced Geosciences, Inc.

<http://www.agiusa.com>; Delma@aguisa.com

Real time color pseudo-section presentation.

AGI is the manufacturer of the SuperSting geo-electrical tomography system. Remote control and real time data quality analysis is achieved using an Android device. Some applications of the SuperSting system are deep mineral exploration, subsurface pollution mapping, shallow and deep marine hydrocarbon exploration, agriculture, geotechnical, and geology.

Bureau of Economic Geology

<http://www.beg.utexas.edu>; dallas.dunlap@beg.utexas.edu

Bureau researchers spearhead basic and applied research projects around the world; among them, research in energy resources and economics, coastal and environmental studies, land resources and use, geologic and mineral mapping, hydrogeology, geochemistry, and subsurface nanotechnology.

Corpus Christi Geological Society

<http://www.ccgeo.org>;

Host of this year's GCAGS/GCSSEPM convention.

EDGE Systems

<http://www.pmls.com>; jparsons@pmls.com

Mudlogging, Quality personnel, Rental Gas Systems.

PML provides, Mud logging, Geosteering, Remote logging & Gas detection services to energy companies. Additionally, our subsidiary, EDGE Systems provides rental gas analyzers to other service providers. Our lead loggers have at least 5 years experience and/or a degree in geology. Our systems are web enabled to provide logs, calibration, etc.

GCAGS Bookstore

<http://www.gcags.org>; pubsales@beg.utexas.edu

GCAGS Bookstore sells the publications of the Gulf Coast Association of Geological Societies, both the *GCAGS Transactions* volumes (new: Volume 66, 2016) and the *GCAGS Journal* (new: Volume 5, 2016). Also displayed and available for purchase are selected publications of GCAGS's member Geological Societies (AGS, CCGS, HGS, MGS, NOGS, and STGS) and GCSSEPM. Information about future GCAGS conventions will also be available at the Bookstore booth.

Gems & Crystals Unlimited

www.gemsandcrystalsunlimited.com; Jeweler@mindspring.com

Customized gold and platinum jewelry.

Complete custom work, including engagement, anniversary, and any special celebrations for you! Outstanding collection of gemstones, diamonds, rubies, sapphires, emeralds, tanzanite, etc.

Great collection of Art Deco and other antique jewelry in gold, platinum, and silver, cameos, cufflinks, pins,

GeoCare Benefits Insurance

<http://www.geocarebenefits.com>; mrodriguez@agia.com

All your insurance needs!

AAPG encourages members to participate in our GeoCare Group Insurance. Plans include Medical (through AAPG's GeoCare members' Private Medical Insurance Exchange), Term Life, Cancer Expense, Dental, Disability, Medicare Supplement, and other supplemental plans. The Program sponsors Auto, Homeowner and other Personal Lines of coverage.

GeoFrontiers

<http://www.geofrontiers.com>; gcags@geofrontiers.com

GeoFrontiers acquires trace gas and liquid hydrocarbon data for geochemical exploration. We solve difficult problems in severe environments, interpret, and integrate with seismic data to enhance any exploration project. Recent capability additions include soil gas probe, carbon dioxide, and helium exploration.

Geomap Company

<http://www.geomap.com>; sjacobs@geomap.com; 972-578-0571

Gravity Map Service provides oil and gas and mining exploration companies with high resolution gravity data and processing. In addition to the GMS gravity data library, GMS also brokers gravity and magnetic data for various other geophysical data companies. Providing a better understanding of subsurface structure through the integration of gravity data into exploration programs will assist in defining the areas where more expensive geophysical methods will be used.

Geophysical Insights

<http://www.geoinsights.com>; Laura@advertasmarketing.com

ParadiseTM – Multi-Attribute Analysis Platform.

Geophysical Insights provides the ParadiseTM multi-attribute analysis platform that uses advanced pattern recognition to extract more information and increase definition and from the seismic response. Visit Paradise to see how exploration risk and field development cost are being dramatically reduced.

Gulf Coast Section SEPM

<http://www.gcssepm.org>; fossil53@gmail.com

GCSSEPM, the Gulf Coast Section of SEPM, is the largest section of SEPM (Society for Sedimentary Geology). It was established for the purpose of “promoting the science of stratigraphy in the Gulf Coast states through research in paleontology and sedimentary petrology, especially as it relates to petroleum geology.” The most important activities that occur throughout the year are cosponsoring the GCAGS annual convention and its’ published *Transactions*, and producing the annual Perkins-Rosen GCSSEPM Research Conferences and Proceedings volumes. The Section also offers free short courses to graduate and undergraduate students, and participates in public outreach to the non-petroleum community (Earth Science Week activities).

Horizon Well Logging / Excellence Logging

<http://www.hzmud.com>; Dkellar@exlog.com

Mud Logging, GeoSteering, Geochemical Services.

Horizon Well Logging is the premier mud logging and geosteering firm supporting natural gas and oil exploration companies from the Mid-continent, S. Texas, Rockies, Appalachia region, and beyond since 1988 utilizing cutting edge technology.

IHS

<http://www.IHS.com>; jeff.warhol@IHS.com

IHS Markit announces a merger of global information leaders. Together, IHS and Markit harness the deepest sources of information, analytics and expertise to forge solutions for industries and markets that drive economies worldwide. We partner with leaders in business, finance and government to help customers be more efficient and make more informed decisions to secure their future. By seeing the big picture and all the connections, we provide insights and perspective on what really matters.

Neuralog

<http://www.neuralog.com>; QTRAN@neuralog.com

Desktop – Well Data, Document & Log Management.

Neuralog provides solutions for well, log, and document management, log data capture including mud log lithology, volumetric and reserves calculations, geological analysis, and well log printing and scanning. Desktop is a powerful ESRI-based interface for organizing your company's well data, logs, and documents into meaningful global views.

Petrosys USA

<http://www.petrosys.com.au>; jessica.dunlap@petrosys-usa.com

Volker Hirsinger 713-580-2950; volker.hirsinger@petrosys-usa.com

Subsurface Mapping & Modeling, Data Management.

Petrosys is the industry leader in mapping, surface modeling & data management software solutions delivering direct connectivity with the most popular exploration, production & GIS data sources. Petrosys produces high quality maps & surface models. It manages, edits & analyzes the underlying information, including the specialized seismic, well & geoscience data used in the search for oil & gas.

Rock Metrics Americas

jason.crux@rockmetricsam.com

Rock Metrics Americas specializes in high resolution images of rocks from SEM samples, thin sections, whole rock cores, to drone images of entire outcrops. Our software stitches, compresses and allows easy manipulation of these images within a viewer. The viewer is capable of overlaying images captured with different light and energy types and includes a full range of measurement and analysis tools.

Thompson Solutions LLC

www.thompsonsolutions.com; gary.thompson@thompsonsolutions.com

Thompson Solutions LLC provides integrated geophysical & geological interpretation solutions for the exploration of oil, gas & minerals. Custom solutions are based on integration of client's data with our expertise in the interpretation of gravity, magnetic & geological data. Brokerage of commercial gravity and magnetic data and management of new data acquisition.

Tricon Geophysics

www.tricongeophysics.com; dave.williams@tricongeophysics.com

Seismic Imaging & Reservoir Services

Seismic Imaging Time and Depth. Reservoir Services for AVO Inversion, Pre-stack Inversion & Fracture Analysis. Petrophysical Analysis

Fall 2016 Scholarship Awards

The Corpus Christi Geological Society awarded \$5,500 in scholarships to 12 local students in November 2016 from TAMU-CC and TAMU-K. We had 21 applicants.

The local SIPES Chapter contributed \$500 of this total for a scholarship.

Texas A&M Corpus Christi Students were:

Jake Alexander, Audrey Douglas, Bimal Gyawali, Erin Matthys, Katherine Morris, Melissa Pena and Holly Thomas.

Students from Texas A&M Kingsville were:

Felipe Alarcon, Sarah Dillon, Monica Estrada, Lenora Perkins, and James Quisenberry

Sarah Dillon, Monica Estrada, Audrey Douglas, Melissa Pena, Jake Alexander, Bimal Gyawali, Lenora Perkins, and James Quisenberry, Erin Matthys and Felipe Alarcon presented, volunteered, and/or attended the GCAGS 2016 Convention.

The CCGS Scholarship fund received donations from member contributions, the CCGS Fishing Tournament and the Corpus Christi Oilman's Tennis Tournament. These donations are vital to allow the committee to fund the scholarships for our deserving students. Every donation is very much appreciated.

In February, the Scholarship committee will host a Corpus Christi Brewery Pub Crawl. Watch for details and join us for this fun event to benefit the scholarship fund.

The Scholarship Committee members are:

JR Jones, Vice-Chairman	Beth Priday, Secretary
Brent Hopkins, Treasurer	Barbara Beynon, CCGS President
Bob Critchlow, Member	BJ Thompson, Member

Outgoing members are Mike Lucente, past president of the CCGS; and Bob Critchlow. Thank you both for your service and input to the scholarship committee.

Dawn S. Bissell
Scholarship Committee Chairman

SPONSORS

CHARGER EXPLORATION

Michael L. Jones
President/Geologist

Onshore Gulf Coast Prospect Generation and Consulting

1001 McKinney Street, Suite 801 Houston, TX 77002
Ofc: 713.654.0080 Cell: 713.398.3091
Email: mjones@chargerexploration.com
www.chargerexploration.com

Serving Corpus Christi for over 20 years



- We process 1st class mail with a direct discount to you
- No meter procedure change except for the amount you meter your envelopes

CALL 888-4332 for details - Ask for Anne

That old gas kick could be your next discovery!

Characterization of Unconventional Reservoirs

Traditional methods of core analysis cannot yield acceptable results when applied to unconventional reservoirs such as gas shales, tight gas sands, coals and thin bed formations.

Production controls on these reservoirs are not limited to hydrocarbons in place, permeability and porosity. Pay identification requires an understanding of complex lithologies and exotic mineralogies.

Only Core Lab offers the comprehensive range of unique technologies required to optimize your unconventional reservoirs.

Geological Petrophysical Geomechanical Geochemical



To learn more about our unique unconventional reservoir evaluation services contact Core Lab. (713) 328-2121 or (361) 289-5457 psinfo@corelab.com

© 2005 Core Laboratories. All rights reserved.



CONGRESSMAN
SOLOMON P.
ORTIZ
INTERNATIONAL
CENTER



THE ORTIZ CENTER

The Ortiz Center, managed by Spectra, is a unique venue that hosts a wide variety of events. From weddings and private parties, to business meetings, trade shows and fundraisers, we can accommodate it all. Our on-site full service catering offers a variety of menu options, sure to impress you and your guests.



GREAT FOR

- Meetings
- Trainings + Seminars
- Tradeshows + Job Fairs
- Fundraisers
- Luncheons
- Galas
- Weddings
- Quinceaneras
- Holiday Parties
- Corporate Events

Webex and teleconferencing services now available.

The Ortiz Center - www.ortizcenter.com ■ 361-879-0125 ■ Corpus Christi, TX

PROFESSIONALLY MANAGED BY



SPONSORS



Austin Office:

1717 W. 6th Street, Ste 230

Austin, Texas 78703

512.457.8711

Contact: Bill Walker, Jr.

bwalker@stalkerenergy.com

Houston Office:

2001 Kirby Drive, Suite 950

Houston, Texas 77019

713.522.2733

Contact: Todd Sinex

tsinex@stalkerenergy.com

www.stalkerenergy.com



LMP PETROLEUM, INC.

EXPLORING SOUTH TEXAS

615 N. Upper Broadway
Suite 1770
Wells Fargo Bank Building
Corpus Christi, Texas 78401-0773

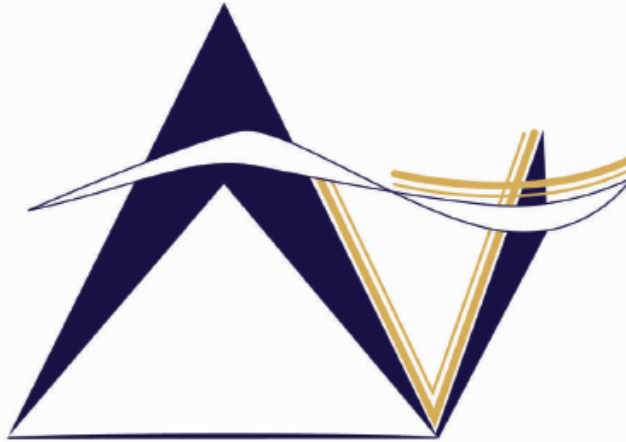
361-883-0923

Fax: 361-883-7102

E-mail: geology@lmpexploration.com



SPONSORS



VirTex Operating Company, Inc.

*615 North Upper Broadway, Suite 525, Corpus Christi, Texas 78477
(361) 882-3046*

SEI®

Seismic Exchange, Inc.

Strategic Speculative Surveys
Geophysical Data Marketing & Management

YOUR
Full Service
National
Seismic Data
Marketing Firm

Corpus Marketing Contact:
Beau Patrick

Corpus Office
361.884.2936

CORPUS CHRISTI DALLAS DENVER HOUSTON NEW ORLEANS TULSA

11050 Capital Park Dr., Houston, Texas 77041 832.590.5100

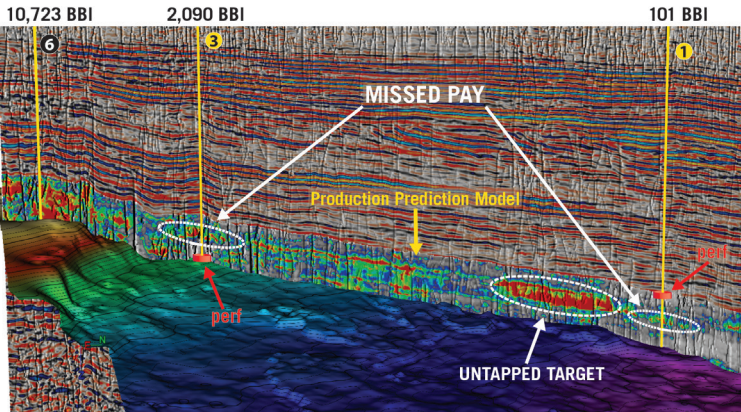
www.seismicexchange.com



SABALO ENERGY

SABALO ENERGY | P.O. BOX 2907 | CORPUS CHRISTI, TX 78403 | 361.888.7708 | SABALOENERGY.COM

SEISMIC-BASED ANALYTICS



An arbitrary line through 3 vertical wells in the West Texas Permian Basin shows the lateral variations of the Production Prediction Model and reveals refrac potential for Wells 1 and 3 where the red disks indicate the actual completion intervals and the white circles highlight the missed pay. Note the untapped target near Well 1.

In today's challenging market, no one can afford a bad well. Global's seismic-based analytics can help you avoid the pitfalls and pinpoint the sweet spots. By integrating seismic, geological, and engineering data, this proprietary workflow identifies the most prospective areas and zones for drilling - down to the stage level! This reduces risk, optimizes spend, and greatly increases the chance for every well and stage to be a winner.

- High-grade prospective drilling areas and zones
- Enhance well planning and geosteering
- Optimize completion placements and frac design
- Predict well performance at stage level
- Boost EUR of individual wells
- Identify candidates for refrac

Global's **SEISMIC-BASED ANALYTICS** approach is field-proven with successful projects in both conventional and unconventional reservoirs. Contact us today to find out how Global can help you make every well a winner.

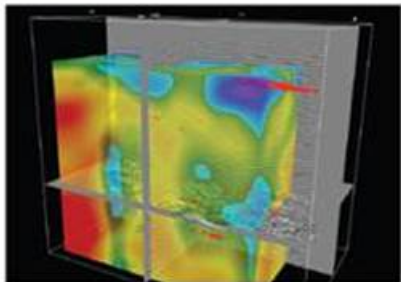
FIND WHAT YOU'VE BEEN MISSING

For More Information:
www.globalgeophysical.com/ANALYTICS or
Contact ANALYTICS@globalgeophysical.com



SEIMAXSM
TECHNOLOGIES

Innovative Seismic
Processing Solutions



**2D and 3D Land and Marine
Pre-Stack Time and Depth Imaging**

**Pre- and Post-Stack Attributes
for Amplitude, Frequency and
Resolution**

4805 Westway Park Blvd. Houston, TX 77041
p: 832.554.4301 www.seimaxtech.com

sponsors



Actively Seeking High Quality
Drilling Prospects

Contacts:

Mike Layman (Geophysicist)	361-844-6922
Tom Winn (Geologist)	361-844-6992
Southern Winn (Geologist)	361-844-6998

800 North Shoreline Blvd.
19th Floor, North Tower
Corpus Christi, Texas 78401

Office: 361-844-6900 Fax: 361-844-6901

EXPLORING SINCE 1968



802 N Carancahua St
Suite 1000
Corpus Christi, TX 78401-0015
Phone: (361) 884-8824
Fax: (361) 884-9623

Corpus Christi Geological Society Papers available for purchase at the Texas Bureau of Economic Geology

Note: Publication codes are hyperlinked to their online listing in [The Bureau Store](http://begstore.beg.utexas.edu/store/) (<http://begstore.beg.utexas.edu/store/>).

Cretaceous-Wilcox-Frio Symposia, D. B. Clutterbuck, Editor, 41 p., 1962.
[CCGS 002S](#) \$15.00

Type Logs of South Texas Fields, Vol. I, Frio Trend. Compiled by Don Kling. Includes 134 fields. 158 p., 1972. Ring binder.
[CCGS 015TL](#) \$25.00

Type Logs of South Texas Fields, Vol. II, Wilcox (Eocene) Trend. Compiled by M. A. Wolbrink. 98 p., 1979. Ring binder.
[CCGS 016TL](#) \$25.00

Field Trip Guidebooks

South Texas Uranium. J. L. Cowdrey, Editor. 62 p., 1968.
[CCGS 102G](#) \$12.00

Hidalgo Canyon and La Popa Valley, Nuevo Leon, Mexico. CCGS 1970 Spring Field Conference. 78 p., 1970.
[CCGS 103G](#) \$8.00

Padre Island National Seashore Field Guide. R. N. Tench and W. D. Hodgson, Editors. 61 p., 1972.
[CCGS 104G](#) \$5.00

Triple Energy Field Trip, Uranium, Coal, Gas—Duval, Webb & Zapata Counties, Texas. George Faga, Editor. 24 p., 1975.
[CCGS 105G](#) \$10.00

Minas de Golondrinas and Minas Rancherías, Mexico. Robert Manson and Barbara Beynon, Editors. 48 p. plus illus., 1978.
[CCGS 106G](#) \$15.00

Portrero Garcia and Huasteca Canyon, Northeastern Mexico. Barbara Beynon and J. L. Russell, Editors. 46 p., 1979.
[CCGS 107G](#) \$15.00

Modern Depositional Environments of Sands in South Texas. C. E. Stelling and J. L. Russell, Editors. 64 p., 1981.
[CCGS 108G](#) \$15.00

Geology of Peregrina & Novillo Canyons, Ciudad Victoria, Mexico, J. L. Russell, Ed., 23 p. plus geologic map and cross section, 1981.
[CCGS 109G](#) \$10.00

Geology of the Llano Uplift, Central Texas, and Geological Features in the Uvalde Area. Corpus Christi Geological Society Annual Spring Field Conference, May 7-9, 1982. Various paginated. 115 p., 53 p.
[CCGS 110G](#) \$15.00

Structure and Mesozoic Stratigraphy of Northeast Mexico, prepared by numerous authors, variously paginated. 76 p., 38 p., 1984.
[CCGS 111G](#) \$15.00

Geology of the Big Bend National Park, Texas, by C. A. Berkebille. 26 p., 1984.
[CCGS 112G](#) \$12.00

GEO LINK POST

<http://www.lib.utexas.edu/books/landsapes/index.php> Free service. Rare, fragile, hard-to-find, public domain documents covering various topics about the landscape of Texas. Includes the Texas Geological Survey from 1887 until 1894.

USGS TAPESTRY OF TIME AND TERRAIN <http://tapestry.usgs.gov> The CCGS is donating to all of the 5th and 6th grade schools in the Coastal Bend. Check it out--it is a spectacular map. You might want to frame one for your own office. The one in my office has glass and a metal frame, and It cost \$400 and it does not look as good as the ones we are giving to the schools.

FREE TEXAS TOPOS'S <http://www.tnris.state.tx.us/digital.htm> these are TIFF files from your state government that can be downloaded and printed. You can ad them to SMT by converting them first in Globalmapper. Other digital data as well.

FREE NATIONAL TOPO'S [http://store.usgs.gov/b2c_usgs/b2c/start/\(xcm=r3standardpitrex_prd\)/.do](http://store.usgs.gov/b2c_usgs/b2c/start/(xcm=r3standardpitrex_prd)/.do) go to this webpage and look on the extreme right side to the box titled TOPO MAPS DOWNLOAD TOPO MAPS FREE.

<http://www.geographynetwork.com/> Go here and try their top 5 map services. My favorite is 'USGS Elevation Date.' Zoom in on your favorite places and see great shaded relief images. One of my favorites is the Great Sand Dunes National Park in south central Colorado. Nice Dunes.

<http://antwrp.gsfc.nasa.gov/apod/asropix.html> Astronomy picture of the day--awesome. I click this page everyday.

<http://www.spacimaging.com/gallery/ioweek/iow.htm> Amazing satellite images. Check out the gallery.

<http://www.ngdc.noaa.gov/seg/topo/globegal.shtml> More great maps to share with kids and students.

www.ccgeo.org Don't forget we have our own we page.

<http://terra.nasa.gov/gallery/> Great satellite images of Earth.

www.ermaper.com They have a great free downloadable viewer for TIFF and other graphic files called ER Viewer.

<http://terrasrver.com> Go here to download free aerial photo images that can be plotted under your digital land and well data. Images down to 1 meter resolution, searchable by Lat Long coordinate. Useful for resolving well location questions.

TYPE LOGS OF SOUTH TEXAS FIELDS by Corpus Christi Geological Society

NEW (2009-2010)TYPE LOGS IN RED; ***2011;**

lost now found

ARANSAS COUNTY

Aransas Pass/McCampbell Deep
Bartell Pass
Blackjack
Burgentine Lake
Copano Bay, South
Estes Cove
Fulton Beach
Goose Island
Half Moon Reef
Nine Mile Point
Rockport, West
St. Charles
Tally Island
Tract 831-G.O.M. (offshore)
Virginia

BEE COUNTY

Caesar
Mosca
Nomanna
Orangedale(2)
Ray-Wilcox
San Domingo

Tulsita Wilcox

Strauch_Wilcox

BROOKS COUNTY

Ann Mag
Boedecker
Cage Ranch
Encintas
ERF
Gyp Hill
Gyp Hill West

Loma Blanca

Mariposa

Mills Bennett

Pita

Tio Ayola

Tres Encinos

CALHOUN COUNTY

Appling
Coloma Creek, North
Heyser
Lavaca Bay
Long Mott
Magnolia Beach
Mosquito Point
Olivia
Panther Reef
Powderhorn
Seadrift, N.W.
Steamboat Pass
Webb Point
S.E. Zoller

CAMERON COUNTY

Holly Beach
Luttet
San Martin (2)
Three Islands, East

Vista Del Mar

COLORADO COUNTY

E. Ramsey
Graceland N. Fault Blk
Graceland S. Fault Blk

DEWITT COUNTY

Anna Barre
Cook
*******Nordheim**

Smith Creek
Warmley
Yorktown, South

DUVAL COUNTY

DCR-49
Four Seasons
Good Friday
Hagist Ranch
Herbst
Loma Novia
Petrox
Seven Sisters
Seventy Six, South
Starr Bright, West

GOLIAD COUNTY

Berclair
North Blanca
Bombs
Boyce
Cabeza Creek, South
Goliad, West
St Armo

HIDALGO COUNTY

Alamo/Donna
Donna
Edinburg, West
Flores-Jeffress
Foy
Hidalgo

LA Blanca
McAllen& Pharr
McAllen Ranch
Mercedes
Monte Christo, North
Penitas
San Fordyce
San Carlos
San Salvador
S. Santallana
Shary
Tabasco
Weslaco, North
Weslaco, South

JACKSON COUNTY

Carancahua Creek
Francitas
Ganado & Ganado Deep
LaWard, North
Little Kentucky

Maurbro

StewartSwan Lake

Swan Lake, East

Texana, North

West Ranch

JIM HOGG COUNTY

Chaparosa
Thompsonville,N.E.

JIM WELLS COUNTY

Freebom
Hoelsher
Palito Blanco

Wade City

KARNES COUNTY

Burnell
Coy City
Person
Runge

KENEDY COUNTY

Candelaria
Julian
Julian, North
Laguna Madre

Rita

Stillman

KLEBERG COUNTY

Alazan
Alazan, North
Big Caesar
Borregos
Chevron (offshore)
Laguna Larga
Seeligson
Sprint (offshore)

LA SALLE COUNTY

*****Pearsall**

LAVACA COUNTY

Hallettsville
Hope
Southwest Speaks
Southwest Speaks Deep
LIVE OAK COUNTY

Atkinson

Braslau

Chapa

Clayton

Dunn

Harris

Houdman

Kittie West-Salt Creek

Lucille

Sierra Vista

Tom Lyne

White Creek

White Creek, East

MATAGORDA COUNTY

Collegeport

MCMULLEN COUNTY

Arnold-Weldon

Brazil

Devil's Waterhole

Hostetter

Hostetter, North

NUECES COUNTY

Agua Dulce (3)

Arnold-David

Arnold-David, North

Baldwin Deep

Calallen

Chapman Ranch

Corpus Christi, N.W.

Corpus Christi West C.C.

Encinal Channel

Flour Bluff/Flour Bluff, East

GOM St 9045(offshore)

Indian Point

Mustang Island

Mustang Island, West

Mustang Island St.

889S(offshore)

Nueces Bay/Nueces Bay

West

Perro Rojo

Pita Island

Ramada

Redfish Bay

Riverside

Riverside, South

Saxet

Shield

Stedman Island

Turkey Creek

REFUGIO COUNTY

Bonnieview/Packery Flats

Greta

La Rosa

Lake Pasture

Refugio, New

Tom O'Connor

SAN PATRICIO COUNTY

Angelita East

Commonwealth

Encino

Enos Cooper

Geronimo

Harvey

Hiberia

Hodges

Mathis, East

McC Campbell Deep/Aransas Pass

Midway

Midway, North

Odem

Plymouth

Portilla (2)

Taft

Taft, East

White Point, East

STARR COUNTY

El Tanque

Garcia

Hinde

La Reforma, S.W.

Lyda

Ricaby

Rincon

Rincon, North

Ross

San Roman

Sun

Yturria

VICTORIA COUNTY

Helen Gohike, S.W.

Keeran, North

Marcado Creek

McFaddin

Meyersville

Placedo

WEBB COUNTY

Aquilares/Glen Martin

Big Cowboy

Bruni, S.E.

Cabezon

Carr Lobo

Davis

Hirsch

Juanita

Las Tiendas

Nicholson

O'Hem

Olmitos

Tom Walsh

WHARTON COUNTY

Black Owl

WILLACY COUNTY

Chile Vieja

La Sal Vieja

Paso Real

Tenerias

Willamar

ZAPATA COUNTY

Benavides

Davis, South

Jennings/Jennings, West

Lopeno

M&F

Pok-A-Dot

ZAVALA COUNTY

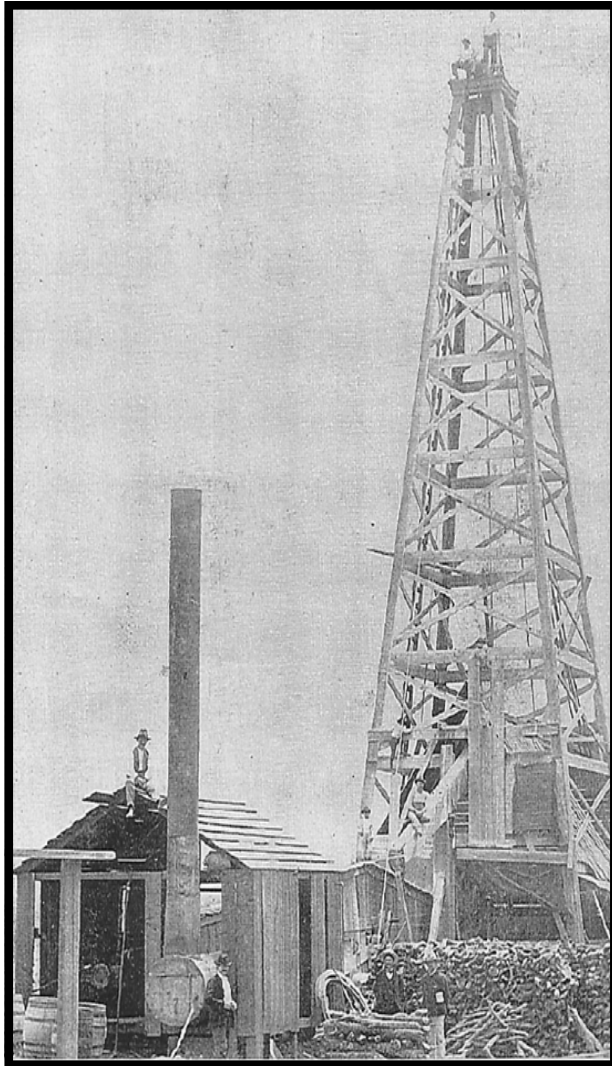
El Bano

Call Coastal Bend Geological Library, Maxine: 361-883-2736
1 log -- \$10 each, 5-10 logs \$9 each and 10 + logs \$8.00 each – plus postage

OIL MEN
TALES FROM THE SOUTH TEXAS OIL PATCH
DVD
MEMBER PRICE \$25
NON-MEMBER \$30



To Order DVD
Sebastian Wiedmann
swiedmann.geo@gmail.com
If mailed add \$5.00



Corpus Christi Geological Society
C/O Javelina Press
P. O. Box 60181
Corpus Christi, TX 78466

Order Form

Mail order form for Wooden rigs-Iron Men. The price is \$75 per copy, which includes sales tax, handling, and postage

Name _____

Address _____

City, State, Zip _____

No. of books _____ Amount enclosed _____

Send to Corpus Christi Geological Society Book Orders

P. O. Box 60181

Corpus Christi, TX. 78466 Tax exempt# if applicable _____

Wooden Rigs—Iron Men

The Story of Oil & Gas in South
Texas

By Bill & Marjorie K. Walraven

Published by the
Corpus Christi Geological Society



Brian Desaulnier
Owner / President
512.923.2059
brian@gts.us

P.O. Box 305 Office: 512.308.8200
Red Rock, TX 78662 Fax: 830.839.4832
www.geotechloggingservices.com

david becker

geologist

David Becker
exploration
geologist

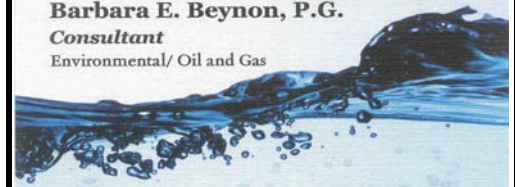
o: (361) 884-3613
f: (888) 869-2011

600 leopard st. ste 706
corpus christi. tx 78473

dkbecker1137@sbcglobal.net

Barbara E. Beynon, P.G.

Consultant
Environmental/ Oil and Gas



(361) 774-3369

Bbeynon77@yahoo.com



Bier Seis, Inc.
Geophysical Consulting

David Biersner, President
Garden Ridge, TX
Cell: 281.744.7457
E-mail: bierseis@yahoo.com

Field Quality Control
Program Management
Insured
MESA, GPSeismic, ArcView



Dawn S. Bissell
Geoscientist

Advent Geoscience Consulting, LLC
Corpus Christi, TX 78411

Phone: 361-960-2151
Email: bissells@swbell.net



James Bloomquist
Business Development Manager
jbloomquist@integrityseismic.com

Office 713-357-4706 ext 7008
Cell 281-660-9695
Fax 713-357-4709

16420 Park Ten Place
Suite 240
Houston, TX 77084

MUD LOGGING SERVICE



Since 1961

MIKE BULLARD

(361) 221-9717 Office
(361) 522-1245 Cell
E-Mail md_bullard@sbcglobal.net

(361) 211-9715 Fax
P.O. Box 1011
Kingsville, Tx 78363



flamingo
SEISMIC SOLUTIONS

Elizabeth Chapman
Business development/marketing

11777 Katy Freeway, Ste 570 Houston, TX 77079
office: 281.977.7432 ext 109 fax: 281.829.1788
cell: 713.817.4232 email: elizabeth@flamingoseismic.com

www.flamingoseismic.com

James L. Claughton
CONSULTING GEOLOGIST

Office | 361-887-2991
Fax | 361-883-4790
Cell | 361-960-2014
clausoie@sbcglobal.net

615 North Upper Broadway
Suite 1935
Corpus Christi, Texas
78401-0779

TEXAS LONE STAR
PETROLEUM CORPORATION



JEFF COBBS
President - Geologist

615 Leopard St., Suite 336 Office (361) 883-2911
Corpus Christi, Texas 78401-0610
jc@tlspc.com Cell (361) 960-0530

Jim Collins
Geoscientist



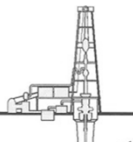
361.537.4034
jim@gulfcoastgas.com

Imagine Resources, LLC

Frank G Cornish
President/Consulting Geologist
5103 Turnabout Lane
Austin, TX 78731

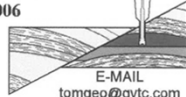
361-563-9184
frank.cornish@gmail.com

TOM DAVIDSON
GEOLOGIST



28550 IH-10 WEST SUITE #4
BOERNE, TEXAS 78006

BUS: (210) 844-8963
RES: (830) 981-5883
FAX: (830) 981-5567
CEL: (210) 844-8963



E-MAIL
tomgeo@gvtc.com

SEIMAX
TECHNOLOGIES

Sara Davis
Director of Marketing & Business Development

4805 Westway Park Blvd., Houston, TX 77041
p: 832.554.4301 d: 832.554.4314 c: 713.256.8737
sdavis@seimaxtech.com



LEIGHTON L. DEVINE
EXPLORATION GEOLOGIST

FROST BANK PLAZA
802 N. CARANCAHUA, SUITE 1000
CORPUS CHRISTI, TEXAS 78470

OFFICE: (361) 884-8824
FAX: (361) 884-9623
MOBILE: (361) 510-8872
ldevine@suemaur.com

ONE APEX ENERGY, INC.

CHRISTIAN DOHSE
Consulting Geologist



(361) 877-3431
CHRISTIANDOHSE@GMAIL.COM
CORPUS CHRISTI, TX

Tommy Dubois
Geologist

2627 CR 312
Yoakum, Texas 77995

361-215-0223 tvdubois@yahoo.com



FRONTERA EXPLORATION CONSULTANTS

Geological and Geophysical Interpretation
SMT Kingdom™ Workstation

THOMAS E. EWING, PH.D.
AAPG CPG #4538; Texas Lic. Geol. #1320

Since
1982

19240 Redland Road, Suite 250, San Antonio, TX 78259
(210) 494-4526; (210) 824-6423 FAX
tewing@fronteraexploration.com

YOUR CARD COULD BE HERE!!!

\$30 FOR 10 ISSUES AD. PRICES PRO-RATED. EMAIL ROBBY AT ROBERT.STERETT@GMAIL.COM.

<p>FOX ENVIRONMENTAL SERVICES, LLC PLANNING PERMITTING REAL ESTATE MARKETING MAPS</p> <p>LAURA M. FOX LAURA@FOXENVIRONMENTALSERVICES.COM</p> <p>P.O. Box 745 ROCKPORT, TEXAS 78381 361.319.3119</p>	<p> VENTEX Oil & Gas, Inc.</p> <p>MATTHEW FRANNEY Geologist</p> <p>600 Leopard Suite 904 Corpus Christi, TX 78401</p> <p>Email: mfraney57@att.net Phone (361) 888-6327</p>	<p>Enrique (Rick) Garza Operation Supervisor US Land</p> <p></p> <p>Rick.Garza@GlobalGeophysical.com DIRECT +1 713-808-7428 MOBILE +1 361-701-6480 FAX +1 713-808-7928 13927 South Gesner Road Missouri City, Texas 77489 USA www.GlobalGeophysical.com</p>
<p>GISLER BROTHERS LOGGING CO., INC.</p> <p>P.O. BOX 485 106 E. MAIN RUNGE, TX 78151</p> <p></p> <p>Wes Gisler Bus. (830) 239-4651 Mobile (361) 676-1369 wes@gislerbrotherslogging.com</p>	<p> RAY GOVETT, Ph. D. CONSULTING GEOLOGIST 361-855-0134</p>	<p>Robert Graham President grexploration@gmail.com</p> <p>Phone 361-882-7681 Fax 361-882-7685 Cell 361-774-3635</p> <p>GrX Inc. Exploratory Prospects & Production Development</p> <p>Mail: P. O. Box 1843 Corpus Christi, Texas 78403-1843</p> <p>Office: 606 N. Carancahua, Ste. 610 Corpus Christi, Texas 78401-0634</p>
<p>HART EXPLORATION, LLC.</p> <p> RICK HART Geologist / Owner</p> <p>P.O. Box 729 Coldspring, Texas 77331</p> <p>Cell: 512-626-3053 Email: hartexploration@aol.com</p>	<p>RIVIERA EXPLORATION, LLC</p> <p>H. TONY HAUGLUM President</p> <p>600 LEOPARD ST. SUITE 1704 CORPUS CHRISTI TEXAS 78401</p> <p>PHONE 361.884.1811 FAX 361.884.8071 E-MAIL THAUGLUM@SWBELL.NET</p>	<p>Chuck Henry Vice President, Geosciences</p> <p></p> <p>T 713.623.7139 M 713.501.9575 chenry@frostwoodenergy.com frostwoodenergy.com</p> <p>6520 Katy Freeway, Suite 100 Houston, TX 77022 Moving Offices on Aug 15th</p>
<p> BRENT F. HOPKINS PRESIDENT AND CEO GEOLOGIST</p> <p>OFFICE: (361) 884-8824 (ext. 1101) FAX: (361) 884-9623 CELL: (361) 215-4855 Email: brent@suemaur.com</p> <p>539 N. CARANCAHUA, SUITE 1100 CORPUS CHRISTI, TEXAS 78401-0999</p>	<p>James R. Jones Geologist</p> <p>7434 Long S Drive Corpus Christi, TX 78414 361-779-0537 jrjones5426@aol.com</p>	<p> EOG Resources, Inc. 539 N. Carancahua Suite 900 Corpus Christi, TX 78401-0908 Direct: (361) 887-2681</p> <p>Randy Lambert Geological Advisor</p> <p>Fax: (361) 844-1546 randy_lambert@eogresources.com</p>
<p> Louis R. Lambiotte Geologist</p> <p>LMP Petroleum, Inc. 615 N. Upper Broadway, Suite 1770 Corpus Christi, TX 78477 Tel: (361) 883-0923 Fax: (361) 883-7102 E-mail: geology@LMPexploration.com</p>	<p>CURTIS R. MAYO GEOLOGICAL CONSULTANT</p> <p>Reserve Analysis Prospect Evaluation Expert Witness Prospect Generation</p> <p>Fredericksburg, Texas 78624 Office: 830.992.2938 Cell: 713.291.0186 E-Mail: CRM@CurtisMayo.com</p>	<p> emerald bay EXPLORATION, LLC</p> <p>PATRICK J. McCULLOUGH [President] patrickm@emeraldbayexp.com</p> <p>311 Saratoga Boulevard Corpus Christi, Texas 78417 361.852.6195 [o] 361.852.6676 [f] 361.876.7881 [c]</p>
<p> VALOR EXPLORATION, LLC</p> <p>Armando Medina Owner / Geologist</p> <p>8610 N. New Braunfels #703 • San Antonio, TX 78217 (210) 538-2170 • amedina@valorexploration.com</p>	<p> J. Mark Miller President</p> <p>Phone (361) 883-7700 Fax (361) 883-7701 mark@millersmithgas.com</p> <p>545 N. Upper Broadway Suite 400 Corpus Christi, Texas 78476</p> <p>Wellhead Gas Marketing</p>	<p>Mailing Address 615 Leopard, Ste. 640 Corpus Christi, Texas 78401-0641 361.882.7888 phone 361.882.7889 fax 361.946.2581 mobile</p> <p>Contact Address 1701 Southwest Parkway, Ste. 109 College Station, Texas 77840 866.946.2581 phone 866.946.2580 fax</p> <p>pmueller@muclrexp.com www.muclrexp.com</p> <p> J. Paul Mueller, Jr. President</p>

YOUR CARD COULD BE HERE!!!
\$30 FOR 10 ISSUES AD. PRICES PRO-RATED. EMAIL ROBBY AT ROBERT.STERETT@GMAIL.COM.



Daniel J. Neuberger
Geologist and President

Austin Office:
712 Windsong Trail
West Lake Hills, Texas 78746

Office (361) 548-7723
Home (512) 306-1223
dan@neuoilandgas.com

Patrick Nye
President
patrick@nyexp.us

Office: (361) 452-1435
Cell: (361) 658-1089
Res: (361) 238-2146



Exploration & Production, LLC

802 N. Carancahua, Suite 1840
Frost Bank Plaza
Corpus Christi, TX 78401
www.nyexp.us



BRIAN E. O'BRIEN
BEO INVESTMENTS, LTD.

510 Bering Dr.
Suite 600
Houston, Tx. 77057

Office: 713-783-4883
Home: 713-784-7911
Cell: 713-899-5164
E-mail: bobrien@saxetpetroleum.com



Ken Orlaska
Account Manager

281-497-8440
Direct: 281-249-5051
Fax: 281-558-8096
Cell: 832-455-1818
e-mail: korlaska@geotrace.com
12141 Wickchester Lane, Suite 200
Houston, Texas 77079
www.geotrace.com



**Herradura
Petroleum, Inc.**

JEFF OSBORN
Geologist

711 N. Carancahua, Ste. 1750
Corpus Christi, Texas 78475
e-mail: jeff@herradurapetroleum.com

Office: 361-884-6886
Fax: 361-884-9102
Cell: 361-537-2349



RICHARD E. PAIGE
CHIEF PROJECT GEOLOGIST

539 N. CARANCAHUA, SUITE 1100
CORPUS CHRISTI, TEXAS 78401-0999

OFF: (361) 884-8824 (ext. 1121)
CELL: (361) 563-1517
HOME: (361) 887-1912
rpaige@suemaur.com

Richard M. Parker
Consulting Geologist

Adjunct Professor - Geosciences
Texas A&M University - Kingsville
Registered State of Texas Board of Professional Geoscientists
License # 6056

12802 Max Rd.
Brookside Village, Texas 77581
Email: rparkstar@sbcglobal.net
Email: Richard.Parker@tamuk.edu

713-724-4380 Cell 1
713-206-3158 Cell 2
281-412-0745 Home
361-593-4072 A&M

Lee Prejean
Business Development Manager



800.256.1147
225.247.9038
www.stratagraph.com
lprejean@stratagraph.com

P.O. Box 53848
Lafayette, LA 70505

STRATAGRAPH
Accurate Data. Reliable Solutions.



Beth Priday
Geologist

615 North Upper Broadway
Suite 525, WF168
Corpus Christi, Texas 78401
Bus (361) 882-3046
Fax (361) 882-7427

Mobile: (361)443-5593 • E-mail: bpriday@virtexoperating.com

Minerals Exploration and Mining
Uranium In Situ Leach

Richard M. Rathbun, Jr.

Certified Professional Geologist 9544 / AIPG
Texas Board of Prof. Geoscientists / Lisc. No. 4679

921 Barracuda Pl.
Corpus Christi, Texas 78411

(361) 903-8207
rathbunassoc@msn.com



Barry J. Rava
President

Mobile: 281-235-7507
Office: 713-621-7282

barry@icarusog.com
www.icarusog.com

P.O. Box 820253
Houston, TX 77282-0253

Deliveries
1710 S. Dairy Ashford Rd., Ste. 202
Houston, TX 77077



Wireline Services

Weatherford International Ltd.
401 E. Sonterra Blvd., Suite 1
San Antonio, Texas 78258
USA

Sam Roach
US Gulf Coast Wireline Sales

+1.210.930.7588 Direct
+1.210.930.7610 Fax
+1.210.241.2463 Mobile

sam.roach@weatherford.com
www.weatherford.com

First Rock, Inc.

RGR Production

First Rock I, LLC

Gregg Robertson

Main Office:
600 Leopard, Suite 1800
Corpus Christi, TX 78401
361-884-0791

San Antonio:
7979 Broadway, Ste 207
San Antonio, TX 78209
210-822-2551

361-884-0863 Facsimile
361-993-6357 Home
361-215-5559 Cell
210-260-0300 Mobile

firstrockinc@msn.com



Alvin Rowbatham
Sales, Gulf of Mexico

Main +1 713 789 7250
Direct +1 281 781 1065
Fax +1 713 789 7201
Mobile +1 832 372 2366
alvin.rowbatham@iongeo.com

2105 CityWest Blvd. | Suite 900
Houston, TX 77042-2839 USA

TOM SELMAN
selmanlog.com
tselman@selmanlog.com

Ofc. (432) 563-0084
(800) 578-1006
Cell (432) 288-2259



GEOLOGICAL CONSULTING / SURFACE LOGGING SERVICES

P.O. Box 61150
Midland, TX 79711

4833 Saratoga #624
Corpus Christi, TX 78413

P.O. Box 2993
Rock Springs, WY 82902



Petrophysics, Inc.
Velocity Surveys • Synthetics • Sonic Log Data

P.O. Box 863323
Plano, Texas 75086

713.560.9733
jsmith@petrophysics.com
www.petrophysics.com

YOUR CARD COULD BE HERE!!!

\$30 FOR 10 ISSUES AD. PRICES PRO-RATED. EMAIL ROBBY AT ROBERT.STERETT@GMAIL.COM.

Crossroads Exploration

Gloria D. Sprague
Geologist

189 North First Street, Suite 111 Office: 936-254-3600
Timpson, Texas 75975 Mobile: 936-488-9428

gsprague4532@att.net

Charles A. Sternbach, Ph.D
President

Star Creek Energy Company

Oil and Gas Exploration

800 Wilcrest Drive, Suite 230
Houston, Texas 77042
office: 281.679.7333
cell: 832.567.7333
carbodude@gmail.com



www.starcreekenergy.com

Dennis A. Taylor
President and Chief Geologist
dennis@amshore.com

Off: (361) 888-4496
Fax: (361) 888-4588
Direct Line: (361) 844-6728
Cell: (972) 672-9916



AMERICAN SHORELINE, INC.

AMSHORE US WIND, LLC

802 N. Carancahua Street, Suite 1250
Corpus Christi, Texas 78401-0019

www.amshore.com

Environmental

Exploration & Production

JEANIE TIMMERMANN

GEOSCIENTIST

TX LICENSE #2289

7214 Everhart #9 (361) 991-7451
Corpus Christi, TX 78413 jimmermann74@ymn.com



Davis
Petroleum
Corp.

www.davispetroleumcorp.com

Jim Travillo
Senior Geoscientist

1330 Post Oak Boulevard
Suite 600
Houston, Texas 77056

Direct: 713.438.6773
Main: 713.626.7766
Fax: 713.626.7775
Cell: 713.823.9332

jttravillo@davcos.com

STALKER ENERGY, L.P.

WILLIAM A. WALKER, JR.
Certified Petroleum Geologist
bwalker@stalkerenergy.com

1717 West 6th Street, Ste. 230 • AUSTIN, TX 78703
2001 KREY DR., STE. 950 • HOUSTON, TX 77019

AUSTIN

512.457.8711

cell: 512.217.5192

fax: 512.457.8717

HOUSTON

713.522.2733

cell: 512.217.5192

fax: 713.522.2879

SEBASTIAN P. WIEDMANN GEOSCIENTIST

WILSON PLAZA WEST
606 N. CARANCAHUA, SUITE 500
CORPUS CHRISTI, TEXAS 78401 MOBILE (361) 946-4430
swiedmann.geo@gmail.com

ion
GEOVENTURES*

Dave Willis
Onshore Sales

Main: +1 713 789 7250
Direct: +1 281 781 1035
Mobile: +1 281 543 6189
Fax: +1 713 789 7201
dave.willis@iongeo.com

2105 CityWest Blvd. | Suite 900
Houston, TX 77042-2839 USA

ROLF WOODS Exploration Geologist



ESENJAY
PETROLEUM CORPORATION

500 N. Water St., Ste. 1100S — CORPUS CHRISTI, TX 78401-0236
Work: (361) 883-7464 • Fax: (361) 883-3244 • Cell: (361) 947-9200
e-mail: rwwoods@gmail.com