

BULLETIN

Corpus Christi Geological Society



and

Coastal Bend Geophysical Society



**September
2017
ISSN 0739 5620**

Compliments of

American Shoreline, Inc.



Specializing in
Oil & Gas Exploration
& Wind Energy

802 N. Carancahua
Frost Bank Plaza, Suite 1250
Corpus Christi, Texas 78401
(361) 888-4496

www.amshore.com



TABLE OF CONTENTS

Officers, Committees and Chairpersons for CCGS/CBGS.....	2 & 3
CCGS/CBGS Joint Calendar of Meetings & Events.....	4 & 5
CCGS President’s Letter.....	6
Renew...Renew...Renew.....	7
Support Your Society, Advertise.....	8
CBGS President’s Letter.....	9
Society Kickoff Bar-B-Q.....	12
Earth Scope Speaker Series (Dr. Carl Tape).....	13
GCAGS-GCSSEPM 2017 Convention.....	14&15
CBGS Golf Tournament.....	18
CCGS Scholarship Application & Guidelines.....	20&21
Energy Auxiliary Membership Information & Membership Form.....	23
Fiery Ice 2017 – 11 th International Workshop on Methane Hydrate Research.....	25
CCGS papers available for purchase at the Bureau of Economic Geology.....	36
Geo Link Post.....	37
Type Logs of South Texas Fields.....	38
Order Oil Men DVD.....	39
Wooden Rigs Iron Men.....	40
Professional Directory.....	41



CORPUS CHRISTI GEOLOGICAL SOCIETY

P.O. BOX 1068* C.C. TX. 78403

2017-2018

www.ccgeo.org

OFFICERS

President	Austin Nye	361-452-1435	austin@nyexp.us
President Elect	Frank Cornish	361-883-0923	frank.cornish@gmail.com
Vice President	William Thompson	361-242-3113	arrangements@ccgeo.org
Secretary	Randy Bissell	361-885-0110	randyb@headingtonenergy.com
Treasurer	Casey Mibb	361-726-1092	clmibb@yahoo.com
Past President	Barbara Beynon	361-774-3369	bbeynon77@yahoo.com
Councilor I	Rick Paige	361-884-8824	rickp@suemaur.com
Councilor II	Brent Hopkins	361-884-8824	brent@suemaur.com

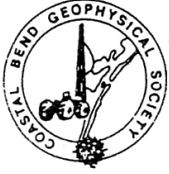
AAPG DELEGATE

EDITORS

Bulletin Editor	Marian Wiedmann	361-855-2542	wiedgulf@gmail.com
Bulletin Tech. Editor	Sebastian Wiedmann	361-946-4430	swiedmann.geo@gmail.com
Web Master	Josh Pollard	361-654-3100	support@interconnect.net

GEOLOGICAL SOCIETY COMMITTEES & CHAIRPERSONS

Advertising/Bus. Cards	Robby Sterett	361-739-5618	robert.sterett@gmail.com
Arrangements	Wes Gisler & Will Graham	830-239-4651 361-885-0110	arrangements@ccgeo.org willg@headingtonenergy.com
Bloodmobile	Mike Lucente	361-883-0923	mikel@impexploration.com
Earth Day	Alan Costello	361-888-4792	acostello@royalcctx.com
Continuing Ed.	Stephen Thomas	361-660-8694	stthomas@spnaturalresources.com
Education	Dawn Bissell	361-960-2151	bissells@swbell.net
Scholarship	J. R. Jones	361-779-0537	jrjones5426@aol.com
Fishing Tournament	Leighton Devine	361-882-8400	ldevine@suemaur.com
History	Ray Govett	361-855-0134	ray30@hotmail.com
Membership	Dorothy Jordan	361-885-0110	dorothyj@headington.com
	Randy Bissell	361-885-0113	randyb@headington.com
Type Logs	Frank Cornish	361-883-0923	frank.cornish@gmail.com
University Liaison	Casey Mibb	361-726-1092	clmibb@yahoo.com
	Wesley Garcia		



COASTAL BEND GEOPHYSICAL SOCIETY
P.O. BOX 2741*C.C. TX. 78403
2017-2018

OFFICERS

President	Dr. Subbarao Yelisetti	361-593-4894	subbarao.yelisetti@tamuk.edu
Vice President	Lonnie Blake	361-883-2831	lonnie_blake@eogresources.com
Secretary/Treasurer	Matt Hammer	361-888-4792	mhammer@royalcctx.com
Golf Chairman	Lonnie Blake	361-883-2831	lonnie_blake@eogresources.com
Scholarship Chairman	Ed Egger	361-947-8400	edegger69@gmail.com
Education	Dr. Robert Schneider	361-593-3589 361-447-2381	Robert.schneider@tamuk.edu

**Visit the geological
web site at
www.ccgeo.org**

CCGS/CBGS JOINT MEETING SCHEDULE 2017-2018

September 2017							October 2017							November 2017						
S	M	T	W	Th	F	S	S	M	T	W	Th	F	S	S	M	T	W	Th	F	S
					1	2	1	2	3	4	5	6	7			1	2	3	4	
3	4	5	6	7	8	9	8	9	10	11	12	13	14	5	6	7	8	9	10	11
10	11	12	13	14	15	16	15	16	17	18	19	20	21	12	13	14	15	16	17	18
17	18	19	20	21	22	23	22	23	24	25	26	27	28	19	20	21	22	23	24	25
24	25	26	27	28	29	30	29	30	31	26	27	28	29	30						

Monday, Oct. 2, 2017 6:00 pm BBQ Kickoff at Hoegemeyers & Presentation by Carl Tape, Ph.D., Associate Professor of Geophysics, Geophysical Institute, University of Alaska Fairbanks *“Seismology in Alaska: Earthquakes, Bears, & High-Performance Computing.”*

11:30 am – 1:00 pm
Speaker: Eugene L. Ames, Jr.
“The History of Discovery: The Largest Oil Field in the World & Other Musing by a Geologist & Wildcatter.”

Oct., 18, 2017 11:30am-1:00pm Speaker: David Mittlefehldt, PhD., Planetary scientists, Astromaterials Research & Exploration Science (ARES), Johnson Space Center, National Aeronautics & Space Administration (NASA) *Astromaterials Research Presentation*

December 2017							January 2018							February 2018						
S	M	T	W	Th	F	S	S	M	T	W	Th	F	S	S	M	T	W	Th	F	S
					1	2	1	2	3	4	5	6					1	2	3	
3	4	5	6	7	8	9	7	8	9	10	11	12	13	4	5	6	7	8	9	10
10	11	12	13	14	15	16	14	15	16	17	18	19	20	11	12	13	14	15	16	17
17	18	19	20	21	22	23	21	22	23	24	25	26	27	18	19	20	21	22	23	24
24	25	26	27	28	29	30	28	29	30	31	25	26	27	28						
31																				

Combined
November/December for the
Holidays.

11:30 am – 1:00 pm
Speaker: To be determined

11:30 am – 1:00 pm
Speaker: To be determined

CCGS/CBGS Joint Meeting Schedule 2017-2018

March 2018							April 2018							May 2018						
S	M	T	W	Th	F	S	S	M	T	W	Th	F	S	S	M	T	W	Th	F	S
				1	2	3	1	2	3	4	5	6	7			1	2	3	4	5
4	5	6	7	8	9	10	8	9	10	11	12	13	14	6	7	8	9	10	11	12
11	12	13	14	15	16	17	15	16	17	18	19	20	21	13	14	15	16	17	18	19
18	19	20	21	22	23	24	22	23	24	25	26	27	28	20	21	22	23	24	25	26
25	26	27	28	29	30	31	29	30						27	28	29	30	31		

11:30 am – 1:00 pm
Speaker: To be determined

11:30 am – 1:00 pm
Speaker: To be determined

11:30 am-1:00 pm
Speaker: To be determined

Calendar of Meetings and Events

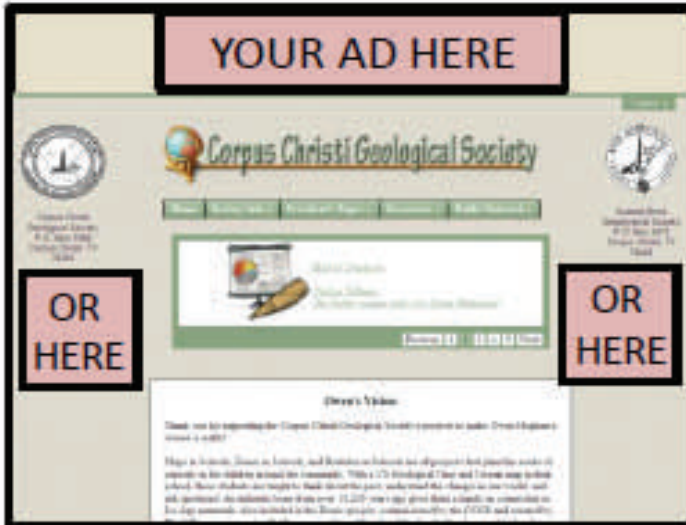
Calendar of Area Monthly Meetings

Corpus Christi Geological/Geophysical Society.....	Third Wed.—11:30a.m.
SIPES Corpus Christi Luncheons.....	Last Tues.—11:30a.m.
South Texas Geological Society Luncheons.....	Second Wed—noon San Antonio
San Antonio Geophysical Society Meetings.....	Fourth Tuesday
Austin Geological Society.....	First Monday
Austin Chapter of SIPES.....	First Thursday
Houston Geological Society Luncheons.....	Last Wednesday
Central Texas Section of Society of Mining, Metallurgy & Exp.....	2 nd Tues every other month in San Antonio

SUPPORT YOUR SOCIETY

Advertise!!!

with the CCGS - CBGS



****NOW OFFERING**
WEBSITE ADS @
WWW.CCGEO.ORG**

**BANNER AD \$2500/YR
SIDE PAGE AD \$1500/YR**

**MONTHLY
BULLETIN
ADS**



1.65" x 2.4" \$75	1.65" x 4.8" \$150
1/8 page 2.2" x 3.6" \$250	CCGS - CBGS Bulletin Ad Space Available: Annual Rates (9 issues + directory)
1/4 page 3.6" x 4.3" \$375	1/2 page 7.2" x 4.3" \$500
	Full page 7.2" x 8.6" \$850
	Inside Front or Back Cover \$1000

FOR MORE DETAILS:

EMAIL ADS@CCGEO.ORG OR CALL (361) 887-2691



CCGS PRESIDENT'S LETTER

Welcome to the 2017/2018 Corpus Christi Geological Society Year! I am honored to be serving as this year's President. Thank you to the new board who shuffled around duties to allow me to serve as President.

The CCGS Annual BBQ Kickoff will again be at Hoegemeyer's this October 2, from 5:30 to 8:00pm. I am Looking forward to seeing everyone there. Dr. Carl Tape will be giving a talk on sedimentary basins in Alaska, which should be enthralling!

The 2017 GCAGS is being hosted in San Antonio by the South Texas Geological Society at the Marriott Rivercenter Hotel this November 1-3.

Also, stay tuned for the October meeting where David Mittlefehldt, Ph.D, will be speaking. He is Planetary Scientist from the Astromaterials Research and Exploration Science (ARES) Department of NASA.

My father, Patrick, happens to be the current President of Society of Independent Professional Earth Scientists (SIPES). We discussed some ideas to bridge the age gap and attempt to provide local university students the opportunity to learn how to be a petroleum geologist. We plan on teaming up with the local log libraries as well as the universities, and matching them with volunteers from the CCGS and SIPES membership to offer students short "courses" on how to analyze logs, how to contour/maps, how to explore for prospects! Our company will be the first to make a donation to cover the libraries' out of pocket costs for copies, etc. Hopefully, students will learn how to prospect for oil and gas during their education, while working alongside local geologists who will then be able to recruit from the local talent pool, thus providing our community and our societies future members.

The coming year will provide some unique challenges with keeping our current members educated and excited while also bringing in the next generation. The speakers lined up this year look fantastic, as well as some continued education opportunities and after hour events scheduled as well.

Looking forward to serving you all.

Sincerely

Austin Nye

CCGS President 2017-18

RENEW...RENEW...RENEW...RENEW...RENEW...RENEW...RENEW...RENEW

**Please RENEW for the 2017-18 Membership Period using
the handy forms we mail in August.**

Everyone should have received their **2017-2018** Membership Renewal forms in the US Mail.

- **PRINTED BULLETINS** are available to any member for \$50/year. We must have a valid mailing address. Please confirm your mailing address on the renewal form.
- **Emails!** Please legibly re-write your preferred email address at the bottom of the form. We are striving to maintain **100%** of the Society reachable by email. Your email is vital if you've chosen not to receive the printed Bulletin.
- Please return the form promptly...yes, before (or at) the Kickoff party. Return of your form is *vital* to keeping our records in order, that's why we enclose a return envelope.
- **IMPORTANT:** Even if you plan to pay at the Kickoff, please bring your renewal form and payment in the envelope! Honorary and student members, please return your forms, too! Students need to update emails, employment, and contact info.
- **Pictures.** We're continuing to add pictures to our database, still not quite enough to justify a new photo directory. Send us a photo (email it to dorothyj@headington.com) – if we get enough pictures this renewal period, we'll plan on a photo directory in June.
- **PAY ONLINE** at www.ccgeo.org and follow the simple steps. We ask that you still return corrected member information via the enclosed envelope...or email it to membership@ccgeo.org...or fax it to us at 361-885-0120.

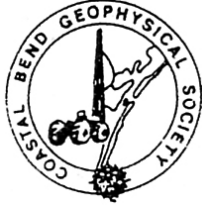


We mailed **400 renewals** this year and it is very expensive for our Societies. Your prompt return of your renewal form is *your* part of this process. Please make this effort worthwhile for our Society.

RENEW...RENEW...RENEW...RENEW...RENEW...RENEW...RENEW...RENEW

For new members, active or student. Email randyb@headington.com to get a membership form. Just print it, fill it out and send it along with your check (no fee for students) to: CCGS Membership, 500 North Shoreline Blvd., Ste. 902N, Corpus Christi, Texas 78401-0343. Contact Randy Bissell at randyb@headington.com or **(361) 885-0110** with any questions. Thanks for your quick response – earlier makes it much easier! And remember:

RENEW...RENEW...RENEW...RENEW...RENEW...RENEW...RENEW...RENEW



CBGS President's Letter

The board met on March 29th to certify election results. Officers for 2017-2018 (with terms beginning May 1) will be:

Dr. Subbarao Yelisetti- President
Lonnie Blake- Vice President
Matt Hammer- Secretary/ Treasurer
Dr. Robert Schneider- Continuing Education
Lonnie Blake- Golf Chair
Ed Egger- Scholarship Chair

News

- According to the Federal Reserve Bank of Dallas, U.S. crude oil prices could move close to \$60 by the end of the year, but rig counts in Texas could stall as reported by Daniel Graeber on upi.com.
- According to federal energy data at the time of writing this letter, U.S. crude production in May hit a 16-month high on gains in Texas and offshore in the Gulf of Mexico.
- According to Baker Hughes, the current U.S. oil and gas rig count is 954. In contrast, the average rig count is 509 in 2016 and 978 in 2015 as reported by Scott DiSavino on reuters.com.

CBGS Business

CBGS currently has 49 members.

CBGS offered Basic Seismic Attributes course on 28th April, 2017 in EOG conference center in Corpus Christi. The speaker is Dr. Robert Schneider, Assistant Professor of Geophysics at Texas A&M University-Kingsville. Total 17 people attended the course. CBGS is looking forward to offer many such courses. Topic suggestions are welcome. Email your suggestions to Subbarao.Yelisetti@tamuk.edu or Lonnie_Blake@eogresources.com

CBGS will hold its annual **Golf Tournament** to fund its scholarship program on October 6, 2017 at Northshore Country Club

To participate or sponsor, please contact Lonnie Blake, 361 887 2665,
Lonnie_Blake@eogresources.com

Anyone who wants to help, contact Lonnie Blake

BS degree in Geophysics, Minor in Geophysics and Certification in Geophysics at Texas A&M University-Kingsville.

Please contact Dr. Subbarao Yeliseti (Subbarao.Yeliseti@tamuk.edu) or Dr. Robert Schneider (Robert.Schneider@tamuk.edu) for additional information.

TAMUK will offer GEOL 3370-Introduction to Geophysics class on Monday, Wednesday and Friday at 11:00-11:50 am. This is available for the professional community as well as our students. You can sign up as a “transient” student in order to take classes without actually enrolling in the school. If anyone in the professional community wishes to sign up for this, please contact the instructor, Dr. Subbarao Yeliseti Subbarao.Yeliseti@tamuk.edu

Education/Events

-SEG

SEG annual meeting in Houston, September 24th-29th.

Technical program can be found at <http://seg.org/Annual-Meeting-2017/Schedule/Sessions>.

See <http://seg.org/Annual-Meeting-2017/Schedule/Courses> for continuing education courses.

Visit <http://seg.org/Annual-Meeting-2017/Schedule/Workshops> for workshops.

See <http://seg.org/Education/Lectures/Honorary-Lectures/2017-HL-van-der-Baan> for SEG honorary lecture locations in Texas. Topic is human-induced seismicity.

See <http://seg.org/Education/Lectures/Distinguished-Lectures/2017-DL-Abma> for information about upcoming SEG distinguished lecture in Houston and other locations.

-SPE

SPE convention in San Antonio, October 9th-11th.

-AGU

AGU fall meeting in New Orleans, December 11th-15th.

See <https://agu.confex.com/agu/fm17/preliminaryview.cgi/programs.html> for sessions and program information.

Monthly Saying

“My formula for success is rise early, work late and strike oil.” - J. Paul Getty

Monthly Summary

Texas Oil and Gas Info	Current Month	Last Month	Difference	
Texas Production	MMBO/BCF	MMBO/BCF	MMBO/BCF	
Oil	90.3	95.7	-5.4	April
Condensate	9.5	10.0	-0.5	April
Gas	616.9	641.8	-24.9	April
	Current Month	Yr to date - 2017	Yr to date - 2016	
Texas Drilling Permits	1,011	7,503	4,170	July
Oil wells	273	1,901	1,209	July
Gas wells	77	405	226	July
Oil and Gas wells	601	4,753	2,456	July
Other	7	102	73	July
Total Completions	516	4,388	7,285	July
Oil Completions	437	3,516	5,621	July
Gas Completions	50	561	1,304	July
New Field Discoveries	4	20	14	July
Other	2	7	34	July

Subbarao Yelisetti
President, CBGS



The Corpus Christi Geological Society
The Coastal Bend Geophysical Society



Invite you to the
Society Kickoff Bar-B-Q

Monday, October 2, 2017

5:30 to 8:00 p.m.

Hoegemeyer's Barbeque Barn

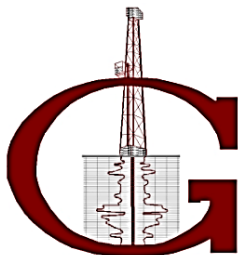
711 Concrete Street (Located across from Concrete Street Amphitheater).

From downtown, take Chaparral St. north, then left on Belden St.

\$25 per member/guest

\$15 students*

Complimentary Bar Courtesy of



GISLER BROTHERS LOGGING CO., INC.

South Texas Operations

P.O. BOX 485 RUNGE, TEXAS 78151
Office : (830) 239-4651 Cell : 361-676-1369

West Texas Operations

P.O. BOX 1759 STANTON, TEXAS 79782
Office : (432) 270-7730 Cell: 361-676-1369

This year during the Kickoff, we will be hosting a slide presentation:
**Dr. Carl Tape: Associate Professor, Geophysical Institute at the University of Alaska
Fairbanks on earthquakes and seismicity in Alaska.**

RSVP (required) by Friday, Sept. 29

Dorothy Jordan, Dorothy@headingtonenergy.com, 361-885-0113

Wes Gisler, wes@gislerbrotherslogging.com, 1-830-239-4651

*Special thanks to the 2017 Fiery Ice Conference at TAMUCC, Dec. 6-8, for supporting the reduced student costs for this year's Kickoff. Find out more about the conference at www.fieryice2017.com

Seismology in Alaska: earthquakes, bears and high-performance computing

Alaska is one of the world's prolific producers of earthquakes, including the 2002 magnitude 7.9 strike-slip earthquake on the Denali fault and the 1964 magnitude 9.2 subduction earthquake on the Alaskan megathrust. Earthquakes occur throughout the state and are a reminder of the active subduction, collision, and faulting that have shaped the highest mountains in North America. Over the past five years, seismic stations have been deployed in some of Alaska's most inaccessible regions. New seismic data provide opportunities to characterize new fault zones and to image complex subsurface structures, from the underlying Pacific slab to sedimentary basins within the crust. Complex structures produce complex earthquake ground motion that can be modeled using high-performance computational resources. I will discuss new seismic deployments, discoveries, and scientific frontiers in Alaska.



Dr. Carl Tape is a seismologist at the University of Alaska Fairbanks. He develops and applies techniques in computational and observational seismology to obtain better images of Earth's internal structure and to obtain better representations of earthquakes. Three-dimensional numerical simulations of the seismic wavefield form the foundation of computational seismology. These simulations produce synthetic seismograms and also volumetric sensitivities that are used within the seismic imaging problem. Improved seismic images of the crust and mantle provide an important snapshot of a dynamic Earth, and they can be used for scenario earthquake simulations that help assess seismic hazard in earthquake-prone regions. Dr. Tape received his B.A. in physics and geology from Carleton College, a M.S. from Oxford University, and a Ph.D. from California Institute of Technology. He did postdoctoral research at Harvard University before starting as faculty at UAF in 2010.

EarthScope

Speaker Series

Monday, October 2nd

The EarthScope Speaker Series is part of the larger EarthScope Education and Outreach program and seeks to present the scientific results of EarthScope researchers to faculty and students in departmental seminars at colleges and universities. Speakers are selected based on their outstanding research accomplishments involving EarthScope as well as their abilities to engage a variety of audiences.

"We'll be talking about his talk for some time"; "Expressing the contribution of EarthScope and its available data is always a great reminder for the faculty and grad students in the department"; "very valuable in terms of collaborative connections and collegial outreach".

Texas A&M University - Kingsville

700 University Blvd, Kingsville, TX 78363

| Time & Bldg TBA

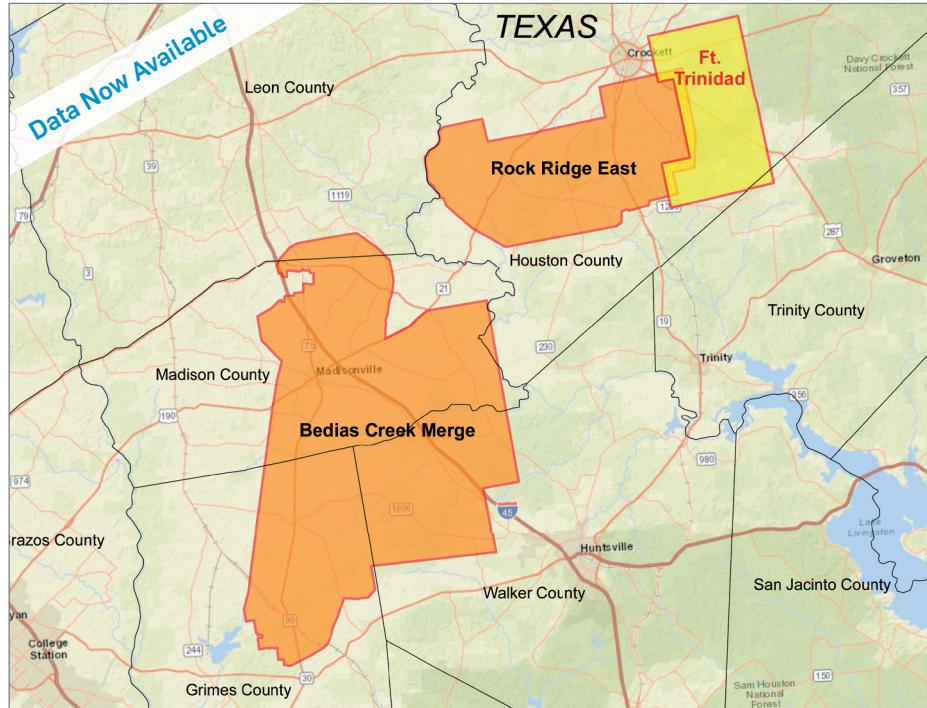
| (361) 593-2767

www.earthscope.org



New Ft. Trinidad 3D Survey Houston and Trinity Counties, TX

YOU'VE ARRIVED



CGG continues to expand its East Texas footprint with high-quality 3D projects while illuminating the stacked pay formations.

Data is already available from our Bedias Creek Merge and Rock Ridge East projects. Orthorhombic PSTM from our newest project Ft. Trinidad is also now available.

The right data, in the right place, at the right time

Scott Tinley
☎ +1 832 351 8544
✉ scott.tinley@cgg.com

Cheryl Oxsheer
☎ +1 832 351 8463
✉ cheryl.oxsheer@cgg.com



cgg.com/ROP



JOIN!



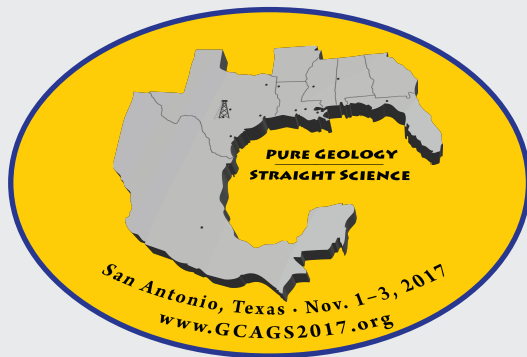
The Desk & Derrick Club of Corpus Christi is a dynamic organization that promotes the education of the petroleum, energy and allied industries and advances the professional

Member Benefits:

- Learn from energy industry experts.
- Network with energy industry leaders and colleagues.
- Attend regional and national meetings.
- Receive critical updates and information about the energy industry.
- Enhance communication and leadership skills.
- Make friends for life!

For more information about the Desk & Derrick Club of Corpus Christi and to learn about member eligibility, go to www.addc.org or contact Jena Nelson at 361-844-6726 or email at jena@amshore.com

The Desk & Derrick Club of Corpus Christi is a proud affiliate of the Association of Desk And Derrick Clubs, www.addc.org



GCAGS-GCSSEPM 2017 CONVENTION

SAN ANTONIO, TEXAS
November 1-3

Hosted by the South Texas Geological Society
Marriott Rivercenter Hotel

REGISTRATION

- \$325 GCAGS/GCSSEPM PROFESSIONAL Early Bird (by Sept. 29)
- \$375 NON-MEMBER PROFESSIONAL Early Bird (by Sept. 29)
- \$400 GCAGS/GCSSEPM PROFESSIONAL On-site (after Sept. 29)
- \$450 NON-MEMBER PROFESSIONAL On-site (after Sept. 29)
- \$45 STUDENT (ID Required On-site)
- \$45 STUDENT Volunteer (Free once approved as volunteer)
- \$80 SPOUSE / GUEST
- \$90 EXHIBIT HALL PASS OR EXHIBIT BOOTH WORKER
- \$75 ICEBREAKER Only

ACCOMMODATIONS

Marriott Rivercenter Hotel

101 Bowie St., San Antonio, TX 78205
(210) 223-1000

Visit www.gcags2017.org/Accommodations/Accommodations
to reserve a discounted room

Registrants with Marriott Rivercenter reservations will be entered into a raffle to
win a Kindle E-Reader or dinner for two on the Riverwalk!

Join us in San Antonio!

Discover San Antonio's Vibrant Downtown

The Riverwalk

Dining, Entertainment, Shopping, Nightlife

The Alamo & Mission Reach

History, Culture, Art, Biking

The Pearl District

Fine Dining, Historical Architecture, Shopping

Southtown Expansion

Art, Dining, Culture, History

Midtown Museum Reach

Zoo, Museums, Art, Entertainment, Biking

www.visitsanantonio.com

For more information and sponsorship opportunities visit

www.GCAGS2017.org

TECHNICAL SESSIONS

Deep Water Symposium

*Basin Evolution and Drivers of Deep Water Sedimentation
Reservoir Architecture and Reservoir Quality from Outcrops to Producing Fields*

Austin Chalk and Eagle Ford Formations

*Resource Play Evaluation - Eagle Ford
Cretaceous Carbonate Reservoirs: Austin Chalk, Edwards, Buda and Georgetown*

Gulf Coast Fields and Reservoirs

Jurassic Gulf Coast Fields and Reservoirs

Water Resources and Gulf Coast Sedimentology

*Water Resource Protection
Gulf Coast Sedimentology*

Reservoirs and Field Analogs

Gulf Coast Fields and Analogs from Other Plays

Workflow in Conventional and Unconventional Reservoirs

Geophysical, Classification and Management Processes for the Geologist

See www.gcags2017.org for the full schedule
and titles of oral and poster presentations.

FIELD TRIPS

Canyon Lake Gorge: Cretaceous Glen Rose (Wed., Nov. 1)

The "Canyon Lake Gorge" Field Trip will provide access to excellent exposures of the Cretaceous Glen Rose Formation at the recently (2002) exposed area below the Spillway at Canyon Lake. It will feature the Stratigraphic, Structural, and Aquifer Characteristics of this exposure.

Upper Cretaceous Sands of the Eagle Pass Area (Fri.-Sat., Nov. 3 & 4)

The "Upper Cretaceous Sands of the Eagle Pass Area" Field Trip will provide a detailed look at the Upper Cretaceous Sands, including the Escondido, Olmos and San Miguel. Along the way we will look at the Austin Chalk and the Anacacho Lime, as well as Igneous ("Serpentine") Intrusions in the area.

Austin Chalk and Eagle Ford Shale in San Antonio (Sat., Nov. 4)

The "Austin Chalk and Eagle Ford Shale in San Antonio" Field Trip will provide a good look at the full Austin Chalk section in the San Antonio area, with several newly examined outcrops. It will include nicely exposed underlying Austin Chalk contacts with the Eagle Ford Shale and an overlying contact with the Taylor Formation. The trip will see nearly 500' of beautifully exposed, easily accessible Buda Lime / Eagle Ford Shale / Austin Chalk.

SPECIAL EVENTS

South Texas Geological Society Golf Tournament: Wed., Nov. 1

All Convention Luncheon: Speaker Dr. William Fisher, Thurs., Nov. 2

Geo-Oktoberfest at Beethoven Maennerchor und Garten: Thurs., Nov. 2

Women in Geosciences Breakfast: Fri., Nov. 3

GCSSEPM Luncheon: Fri., Nov. 3

AAPG DPA Luncheon: Fri., Nov. 3

SHORT COURSES

3D Seismic Attributes for Prospect Identification and Reservoir Characterization

In this 2-day short course, you will gain an intuitive understanding of the kinds of seismic features that can be identified by 3D seismic attributes, the sensitivity of seismic attributes to seismic acquisition and processing, and how "independent" seismic attributes can be coupled through geology. Instructor Kurt Marfurt: Tues.-Wed., Oct. 31-Nov. 1

Integrated Exploration Methods for Clastic Depositional Systems

This 2-day course is designed to provide participants with a modern appreciation of the full spectrum of deep-water depositional systems and their petroleum reservoirs in the context of oil and gas exploration and appraisal. The course examines sediment transport and deposition, stratigraphic architecture, and predictive reservoir characteristics in a variety of basins using hands-on lectures, core-log-seismic exercises, and collaborative discussions. Instructor John Rotzien: Tues.-Wed., Oct. 31-Nov. 1

Log Analysis for Unconventional Reservoirs

This is a 1-day short course on log analysis of unconventional reservoirs. It will cover basic characteristics and mineralogy of unconventional reservoirs; estimation of Total Organic Carbon (TOC wt.%) from well logs; log analysis of organic rich, gas-bearing and oil-bearing mudstones using both conventional logs and newer advanced logging technologies including geomechanical properties, NMR and dielectric logs. Case studies from both gas and oil bearing unconventional reservoirs are presented. Instructor George Asquith: Tues., Nov. 1

Introduction to Seismic Interpretation: STUDENTS ONLY

This is a 2-day short course that introduces participants to seismic interpretation as applied in the petroleum industry. Lectures, hands-on exercises and discussions focus on the tools and concepts used by interpreters to derive structural and stratigraphic information from 2D and 3D seismic data. Topics include the principles of the seismic method, data acquisition and processing, interpretation tools and workflows, and how all of these factors affect structural and stratigraphic interpretations. Instructors Carl Fiduk & Bruce Hart: Fri.-Sat., Nov. 4-5

Ethics for Geologists (Includes Breakfast)

This is a 1-hour collaborative/interactive lecture to satisfy the Texas Board of Professional Geoscientists ethics credit requirement. Participants must bring a text capable phone to interactively participate in the lecture. Students may suggest specific ethical topics for class discussion by contacting the instructor at john.jordan.062255@gmail.com prior to the course. Instructor John Jordan: Thurs., Nov. 3



CBGS GOLF TOURNAMENT

Coastal Bend Geophysical Society

NorthShore Country Club

October 6, 2017

12:30 p.m. Shotgun Tee Time

Four-Man Scramble

100 Player Limit * Sign up Early

Contact: Lonnie Blake – Lonnie_blake@eogresources.com

361 876 6614



Name _____

Email _____

Company Name _____

Address _____

City, State, Zip _____

Phone _____

_____ Yes, Please Place on a Team

_____ I want to be on a Team with: (list below)

Player 2: _____

Player 3: _____

Player 4: _____

_____ \$100 per Golfer

_____ \$400 per Team (4 players)

_____ Sponsorship Total

_____ **TOTAL AMOUNT DUE**

PAYMENT INFORMATION

_____ Check Enclosed

Make Checks payable to:

Coastal Bend Geophysical Society

Matt Hammer

500 N. Shoreline Blvd Ste. 807,

Corpus Christi, Texas 78401

Sponsorships

#___ Golf Beverage Cart \$700 ea. _____

#___ Golf Holes (18) \$200 ea. _____

#___ Longest Drive
(2) \$100 ea. _____

___ Closest to the Pin
(2) \$100 ea. _____

Door Prize Sponsor _____

Total Sponsorship \$_____

NorthShore Country Club

801 E. Broadway St.

Portland, TX 78374

Entry Fee Includes:

- Green Fees
- Range Balls
- Carts
- Beverages on the Golf Course
- Door Prizes
- Dinner Buffet

SPONSORS



**USE PROMO CODE - CCGSTRIDE
FOR \$5.00 OFF YOUR FIRST RIDE.**

**DOWNLOAD THE TRIDE
PASSENGER APP TODAY!**

GET IT ON
 **Google Play**

 Download on the
App Store

RIDETRIDE.COM

STALKER ENERGY, L.P.

Austin Office:

1717 W. 6th Street, Ste 230

Austin, Texas 78703

512.457.8711

Contact: Bill Walker, Jr.

bwalker@stalkerenergy.com

Houston Office:

2001 Kirby Drive, Suite 950

Houston, Texas 77019

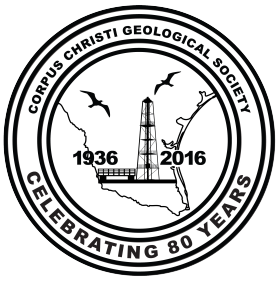
713.522.2733

Contact: Todd Sinex

tsinex@stalkerenergy.com

www.stalkerenergy.com





Corpus Christi Geological Society
Corpus Christi Chapter of
Society of Independent Earth Scientists
Scholarship Application Guidelines
Spring 2018 Semester
(Must be postmarked by October 14, 2017)

1. Applicant must be majoring in Earth Sciences and enrolled for the award semester (i.e. Spring 2018). Applicant must have graduated from a local Coastal Bend area High School or attend a college in the local area. Applicant must be a member of the Corpus Christi Geological Society.
2. Fill out the application form clearly, completely, and sign it.
3. Short essay clearly explaining how this scholarship will assist you in achieving your geologic career goals and the reasons your application should be considered by the Committee.
4. Two (2) letters of recommendation - one must be from a geoscience faculty member or from a supervisor with whom applicant has worked with in a geoscience undertaking.
5. Applicant must provide a school transcript, please make sure it has your name on it. A web printout is acceptable.
6. **Applications must be postmarked by: October 14, 2017**
Application packet may be emailed in a shareable format (i.e. pdf, docx, etc.) to bissells@swbell.net. *If you want to email your application – contact me for the order of documents submitted.*

Mail completed application to: Dawn Bissell, CCGS Scholarship Committee,
253 Circle Drive, Corpus Christi, TX 78411

Send an email to bissells@swbell.net once you've mailed your application. We need **YOUR** email address. *Award notifications will be sent via email!!!*

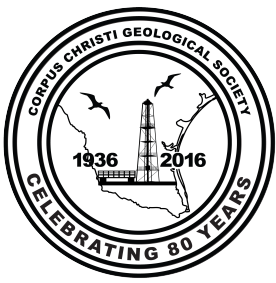
Please read requirements carefully and submit only complete applications. Applicants who have received a CCGS scholarship in the past are eligible to apply again.

Scholarships will be awarded based on merit and need. The award amounts may vary with the minimum individual award being \$500. The CC SIPES scholarship award will be \$500.

Award recipients will be recognized at the CCGS monthly **luncheon November 16, 2016** and are encouraged to attend.

Board Members:

Dawn Bissell Austin Nye - CCGS President Brent Hopkins BJ Thompson Bob Bell



Corpus Christi Geological Society
Corpus Christi Chapter of
Society of Independent Earth Scientists
Scholarship Application Guidelines
Spring 2018 Semester
(Must be postmarked by October 14, 2017)

Last Name: _____ First Name: _____

Mailing address: _____
(where award may be mailed if applicant is unable to attend award presentation)

City: _____ State: _____ Zip Code: _____

Active Email: _____

*Award notifications will be sent via email!!! Email bissells@swbell.net once you've submitted your application. I need **YOUR** email address.*

Daytime Phone: _____ Alternate Phone: _____

Coastal Bend Area High School: _____ Graduation Date: _____

University Attending in Spring 2018: _____

Department: _____ Major: _____

Scholarship is for class level (circle one):

Freshman Sophomore Junior Senior Graduate Student

Total Hours Completed: _____ Overall GPA (Minimum 2.5): _____

Total Hours - Geology: _____ Geology GPA (Minimum 3.0) _____

Hours Planned for Scholarship Semester: _____ Geology Hours: _____

Prior recipient of CCGS Scholarship? Yes No

Are you a student member of CCGS? Yes No

(If no, email membership@ccgeo.org with your contact information. You must be a member of CCGS.)

Applicant Signature _____ Date _____

Mail application, along with essay, two letters of recommendation, and transcript to:
Dawn Bissell, CCGS Scholarship Committee 253 Circle Drive,
Corpus Christi, TX 78411. Application **must be postmarked by October 14, 2017.**

Email bissells@swbell.net once you've mailed your application.

Award notifications will be made via email!!!

SPONSORS

KNOWLEDGE REVEALED

PURPOSE DRIVEN

- Unrivaled land seismic acquisition capabilities
- Specific solutions for all terrains and environments (land, shallow water/transition zone and OBC)
- Purpose driven crews with proven experience around the world
- Processing and Interpretation services revealing the project knowledge you need
- Full azimuth 3D and 3C coverage in unconventional resource plays
- Multi-Client opportunities in North America, Latin America and Australasia
- Proven experience in:
 - Azimuthal anisotropy resolution and fracture identification
 - Multicomponent processing
 - AVO processing and inversion



INNOVATIVE
GEOPHYSICAL
SOLUTIONS



geokinetics.com

Energy Auxiliary

Please join us for a Meet and Greet

The Bissells' Otra Casa

249 Circle Drive

Entrance on Third Street

Thursday, October 5, 2017

5:30 pm to 7:30 pm

RSVP by Friday, September 29th to

Dawn at 361-960-2151 or bissells@swbell.net

Events planned for 2016-2017

Wednesday, December 6th – Fall Cocktail Party

Thursday, February 15th – Ladies Night Out

Friday, April 27th – Shrimp Boil

Wednesday, June 6th – Spring Luncheon

Board Members for 2017-2018

President ~ Darlene Murry

VP /Secretary ~ Dawn Bissell

Treasurer ~ Leslie Blake

Social Directors ~ Melody Schnexnayder and Mary Jones

Parliamentarian ~ Rita Graham

We don't hold monthly meetings; we simply have 3-4 social gatherings per year! It's a great way to get to know folks in our industry and a good time is always had by all.

Energy Auxiliary

2017 - 2018 ~ Membership Form

Please enclose your membership dues of \$35 payable to EA and return to

Leslie Blake – 409 Santa Monica Pl. - Corpus Christi, TX 7841

Name: _____	Spouse's name: _____
Address: _____	Home phone: _____
City, Zip: _____	Email: _____
Your place of work: _____	Your work/cell phone: _____
Spouse's place of work: _____	Best contact number: _____

Please indicate on back how you would like to help - from joining the board, serving on a committee, to ideas for events. Suggestions?

SPONSORS

GeoSteering LLC
www.GeoSteering.com

info@geosteering.com

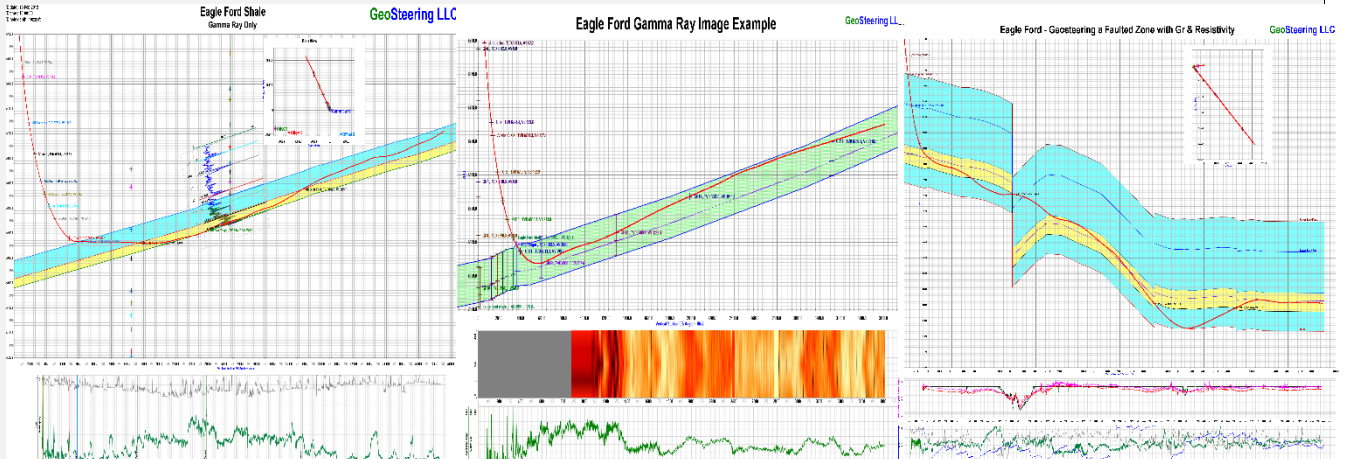
281-573-0500

Geosteering in the USA and Internationally since 2002

Steering with GR

Steering with Images

Steering with Resistivity



Experience in Texas

Austin Chalk, Barnett, Buda, Caddo, Devonian, Eaglebine / Woodbine, Eagle Ford, Georgetown, Granite Wash, Permian (Delaware, Midland), Smithwick



Since 1905

Royal Exploration Company, Inc.

500 N Shoreline Blvd, Suite 807 N
Corpus Christi, Texas 78401-0336

Alan Costello – Geologist
acostello@royalcctx.com

Matt Hammer – Exploration Manager
mhammer@royalcctx.com

Telephone: 361/888-4792

Fax: 361/888-8190



FIERY ICE 2017 - Corpus Christi, Texas, USA, 6-8 December 2017

The website for the 11th International Workshop on Methane Hydrate Research and Development is now open: <http://www.tamucc.edu/pens/fiery-ice-2017> (August 1, 2017). Details of the Workshop and a link to online registration are provided on this website.

Important Dates (North America Central Standard Time [CST]):

- August 1, 2017: Fiery Ice 2017 website opens
- August 1, 2017: Online registration begins
- September 1, 2017: Opening date for abstract submission
- October 15, 2017: Last day to submit abstracts
- November 1, 2017: Notification of acceptance of submitted abstracts
- October 20, 2017: Early registration closes
- December 7, 2017: Online registration closes

Registration Fees:

- Early registration (until October 20, 2017): U.S. \$600
- Regular registration (until December 7, 2017): U.S. \$700
- Student registration (until November 15, 2017): U.S. \$300
- Onsite registration: U.S. \$700 (Regular); U.S. \$400 (Student)

The registration fee includes:

- Admission to the workshop on December 6, 7, and 8
- Reception on December 6
- Banquet Dinner on December 7
- Lunch on December 6 and 7
- Breakfast on December 6, 7 and 8
- Morning and afternoon refreshments during the workshop

Please note that registration fee does not include accommodations. Participants are responsible for reserving and paying for their hotel accommodations. Hotel registration will be available August 1, 2017.

Call for Abstracts:

The Call for Abstracts will be emailed and posted on the website by August 1, 2017

Tentative Program Schedule:

Time / Date	December 5 (Tue)	December 6 (Wed)	December 7 (Thu)	December 8 (Fri)
Morning	Pre-workshop event	Registration Opening remarks Plenary lecture 1	Registration Breakout session report 1 National reports	Breakout session report 2 Plenary lecture 2 Closing remarks
Afternoon 1		Oral presentations National reports	Oral presentations National reports	
Afternoon 2		Poster presentations Breakout session 1	Poster presentations Breakout session 2	
Evening		Banquet Dinner – Corpus Christi Aquarium	TAMU-CC Campus Dinner and Cocktails	

Changes in this schedule will occur as speakers are organized.

Pre-Workshop Event:

The pre-workshop event on December 5 will be held at the Omni Hotel and will include registration at a reserved location in the lounge where cocktails can be purchased.

Breakout Sessions:

The topics of the 6 breakout sessions that will be held on December 6 and 7 are being finalized by the International Steering Committee. An announcement of the breakout session topics will be posted on the Workshop website in the near future.

Workshop Venue:

The 11th International Workshop on Methane Hydrate Research and Development will be held at the Omni Hotel in downtown Corpus Christi, Texas.

Accommodations:

Blocks of hotel rooms at the Omni Hotel (<https://www.omnihotels.com/hotels/corpus-christi>) in downtown Corpus Christi at a discounted rate have been reserved for the workshop participants. Please visit the Workshop website and go to the Accommodations section for more information.

Visas:

Detailed information regarding visas is available on the Workshop website. If you are NOT a citizen or permanent resident of the U.S. or its territories, or reside in a U.S. Visa Waiver Program (VWP) designated country, and are planning to apply for a Visitor (B) visa, then please do so as early as possible. Please contact us by email if you have questions or require assistance in obtaining a visa.

International Steering Committee:

Professor Richard Coffin
Texas A&M University Corpus Christi USA

Professor Bjørn Kvamme
University of Bergen NORWAY

Professor Stephen Masutani
University of Hawai'i USA

Dr. Norio Tenma
National Institute of Advanced Science &
Technology JAPAN


Professor Tsutomu Uchida
Hokkaido University JAPAN

Workshop Secretariat:

Email: Alessandra.Garcia@tamucc.edu

Website: <http://www.tamucc.edu/pens/fiery-ice-2017>

SPONSORS



Nueces Energy, Inc.
P.O. Box 252
Corpus Christi, Texas 78403
Office: (361) 884-0435
Fax: (361)-654-1436
www.nuecesland.com

Nueces Energy, Inc. is a complete land services company in the business of providing professional landmen and project management to various energy related jobs primarily in the oil and gas industry.

With over 30 years of industry experience, we specialize in determining surface and subsurface ownership and negotiating and acquiring contracts, rights of way agreements, and easements to provide our clients with the legal right to explore and develop oil and gas resources. We provide a full service land company capable of managing any project no matter how large or small.



THUNDER EXPLORATION, INC.

Celebrating 30+ years of prospect generation and exploration in the following South Texas plays and trends.

Frio	San Miguel	Edwards
Jackson	Austin Chalk	Pearsall
Yegua	Eagle Ford	Sligo
Wilcox	Buda	Cotton Valley
Olmos	Georgetown	Smackover

Thunder is currently seeking non-operated working interest participation in projects and prospects.

Contact **Walter S. Light Jr.**
President/Geologist
713.823.8288
EMAIL: wthunderx@aol.com

Headington Oil Company is now...



HEADINGTON
ENERGY PARTNERS, LLC

Proudly operating in South Texas.

For more information contact:
Randy Bissell, randyb@headingtonenergy.com or call 361-885-0113



Offices in Corpus Christi, Sarita, and McKinney, Texas - Exploring and Developing properties
In South Texas, Permian Basin, East Texas & Oklahoma

SPONSORS

CHARGER EXPLORATION

Michael L. Jones
President/Geologist

Onshore Gulf Coast Prospect Generation and Consulting

1001 McKinney Street, Suite 801 Houston, TX 77002
Ofc: 713.654.0080 Cell: 713.398.3091
Email: mjones@chargerexploration.com
www.chargerexploration.com

Serving Corpus Christi for over 20 years



- We process 1st class mail with a direct discount to you
- No meter procedure change except for the amount you meter your envelopes

CALL 888-4332 for details - Ask for Anne

That old gas kick could be your next discovery!

Characterization of Unconventional Reservoirs

Traditional methods of core analysis cannot yield acceptable results when applied to unconventional reservoirs such as gas shales, tight gas sands, coals and thin bed formations.

Production controls on these reservoirs are not limited to hydrocarbons in place, permeability and porosity. Pay identification requires an understanding of complex lithologies and exotic mineralogies.

Only Core Lab offers the comprehensive range of unique technologies required to optimize your unconventional reservoirs.

Geological Petrophysical Geomechanical Geochemical



To learn more about our unique unconventional reservoir evaluation services contact Core Lab. (713) 328-2121 or (361) 289-5457 psinfo@corelab.com

© 2005 Core Laboratories. All rights reserved.



CONGRESSMAN
SOLOMON P.
ORTIZ
INTERNATIONAL
CENTER



THE ORTIZ CENTER

The Ortiz Center, managed by Spectra, is a unique venue that hosts a wide variety of events. From weddings and private parties, to business meetings, trade shows and fundraisers, we can accommodate it all. Our on-site full service catering offers a variety of menu options, sure to impress you and your guests.



GREAT FOR

- Meetings
- Trainings + Seminars
- Tradeshows + Job Fairs
- Fundraisers
- Luncheons
- Galas
- Weddings
- Quinceaneras
- Holiday Parties
- Corporate Events

Webex and teleconferencing services now available.

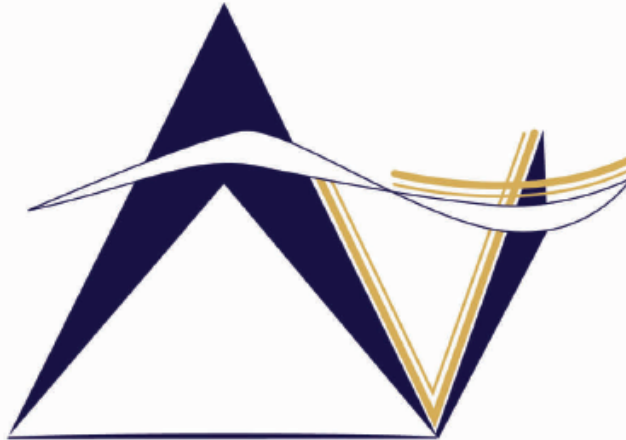


The Ortiz Center - www.ortizcenter.com ■ 361-879-0125 ■ Corpus Christi, TX

PROFESSIONALLY MANAGED BY



SPONSORS



VirTex Operating Company, Inc.

*615 North Upper Broadway, Suite 525, Corpus Christi, Texas 78477
(361) 882-3046*

SEI®

Seismic Exchange, Inc.

Strategic Speculative Surveys
Geophysical Data Marketing & Management

YOUR
Full Service
National
Seismic Data
Marketing Firm

Corpus Marketing Contact:
Beau Patrick

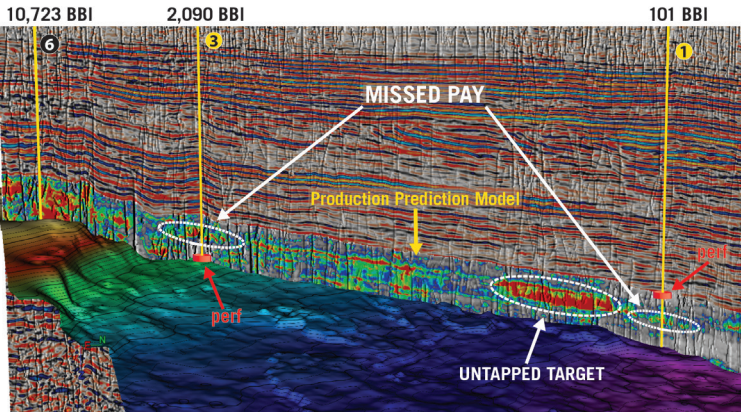
Corpus Office
361.884.2936

CORPUS CHRISTI DALLAS DENVER HOUSTON NEW ORLEANS TULSA

11050 Capital Park Dr., Houston, Texas 77041 832.590.5100

www.seismicexchange.com

SEISMIC-BASED ANALYTICS



An arbitrary line through 3 vertical wells in the West Texas Permian Basin shows the lateral variations of the Production Prediction Model and reveals refrac potential for Wells 1 and 3 where the red disks indicate the actual completion intervals and the white circles highlight the missed pay. Note the untapped target near Well 1.

In today's challenging market, no one can afford a bad well. Global's seismic-based analytics can help you avoid the pitfalls and pinpoint the sweet spots. By integrating seismic, geological, and engineering data, this proprietary workflow identifies the most prospective areas and zones for drilling - down to the stage level! This reduces risk, optimizes spend, and greatly increases the chance for every well and stage to be a winner.

- High-grade prospective drilling areas and zones
- Enhance well planning and geosteering
- Optimize completion placements and frac design
- Predict well performance at stage level
- Boost EUR of individual wells
- Identify candidates for refrac

Global's **SEISMIC-BASED ANALYTICS** approach is field-proven with successful projects in both conventional and unconventional reservoirs. Contact us today to find out how Global can help you make every well a winner.

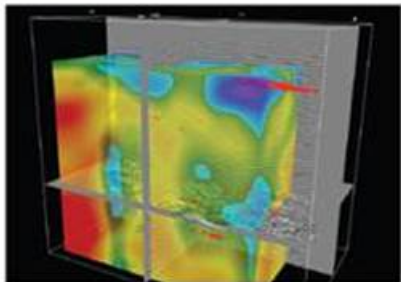
FIND WHAT YOU'VE BEEN MISSING

For More Information:
www.globalgeophysical.com/ANALYTICS or
Contact ANALYTICS@globalgeophysical.com



SEIMAXSM
TECHNOLOGIES

Innovative Seismic
Processing Solutions



**2D and 3D Land and Marine
Pre-Stack Time and Depth Imaging**

**Pre- and Post-Stack Attributes
for Amplitude, Frequency and
Resolution**

4805 Westway Park Blvd. Houston, TX 77041
p: 832.554.4301 www.seimaxtech.com



SABALO ENERGY

SABALO ENERGY | P.O. BOX 2907 | CORPUS CHRISTI, TX 78403 | 361.888.7708 | SABALOENERGY.COM

sponsors



Winn Exploration Co., Inc.

Actively Seeking High Quality
Drilling Prospects

Contacts:

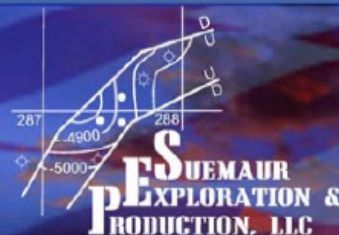
Mike Layman (Geophysicist)	361-844-6922
Tom Winn (Geologist)	361-844-6992
Southern Winn (Geologist)	361-844-6998

800 North Shoreline Blvd.
19th Floor, North Tower
Corpus Christi, Texas 78401

Office: 361-844-6900

Fax: 361-844-6901

EXPLORING SINCE 1968



802 N Carancahua St
Suite 1000
Corpus Christi, TX 78401-0015
Phone: (361) 884-8824
Fax: (361) 884-9623

Corpus Christi Geological Society Papers available for purchase at the Texas Bureau of Economic Geology

Note: Publication codes are hyperlinked to their online listing in [The Bureau Store](http://begstore.beg.utexas.edu/store/) (<http://begstore.beg.utexas.edu/store/>).

Cretaceous-Wilcox-Frio Symposia, D. B. Clutterbuck, Editor, 41 p., 1962.
[CCGS 002S](#) \$15.00

Type Logs of South Texas Fields, Vol. I, Frio Trend. Compiled by Don Kling. Includes 134 fields. 158 p., 1972. Ring binder.
[CCGS 015TL](#) \$25.00

Type Logs of South Texas Fields, Vol. II, Wilcox (Eocene) Trend. Compiled by M. A. Wolbrink. 98 p., 1979. Ring binder.
[CCGS 016TL](#) \$25.00

Field Trip Guidebooks

South Texas Uranium. J. L. Cowdrey, Editor. 62 p., 1968.
[CCGS 102G](#) \$12.00

Hidalgo Canyon and La Popa Valley, Nuevo Leon, Mexico. CCGS 1970 Spring Field Conference. 78 p., 1970.
[CCGS 103G](#) \$8.00

Padre Island National Seashore Field Guide. R. N. Tench and W. D. Hodgson, Editors. 61 p., 1972.
[CCGS 104G](#) \$5.00

Triple Energy Field Trip, Uranium, Coal, Gas—Duval, Webb & Zapata Counties, Texas. George Faga, Editor. 24 p., 1975.
[CCGS 105G](#) \$10.00

Minas de Golondrinas and Minas Rancherías, Mexico. Robert Manson and Barbara Beynon, Editors. 48 p. plus illus., 1978.
[CCGS 106G](#) \$15.00

Portrero Garcia and Huasteca Canyon, Northeastern Mexico. Barbara Beynon and J. L. Russell, Editors. 46 p., 1979.
[CCGS 107G](#) \$15.00

Modern Depositional Environments of Sands in South Texas. C. E. Stelling and J. L. Russell, Editors. 64 p., 1981.
[CCGS 108G](#) \$15.00

Geology of Peregrina & Novillo Canyons, Ciudad Victoria, Mexico, J. L. Russell, Ed., 23 p. plus geologic map and cross section, 1981.
[CCGS 109G](#) \$10.00

Geology of the Llano Uplift, Central Texas, and Geological Features in the Uvalde Area. Corpus Christi Geological Society Annual Spring Field Conference, May 7-9, 1982. Various paginated. 115 p., 53 p.
[CCGS 110G](#) \$15.00

Structure and Mesozoic Stratigraphy of Northeast Mexico, prepared by numerous authors, variously paginated. 76 p., 38 p., 1984.
[CCGS 111G](#) \$15.00

Geology of the Big Bend National Park, Texas, by C. A. Berkebille. 26 p., 1984.
[CCGS 112G](#) \$12.00

GEO LINK POST

<http://www.lib.utexas.edu/books/landsapes/index.php> Free service. Rare, fragile, hard-to-find, public domain documents covering various topics about the landscape of Texas. Includes the Texas Geological Survey from 1887 until 1894.

USGS TAPESTRY OF TIME AND TERRAIN <http://tapestry.usgs.gov> The CCGS is donating to all of the 5th and 6th grade schools in the Coastal Bend. Check it out--it is a spectacular map. You might want to frame one for your own office. The one in my office has glass and a metal frame, and It cost \$400 and it does not look as good as the ones we are giving to the schools.

FREE TEXAS TOPOS'S <http://www.tnris.state.tx.us/digital.htm> these are TIFF files from your state government that can be downloaded and printed. You can ad them to SMT by converting them first in Globalmapper. Other digital data as well.

FREE NATIONAL TOPO'S [http://store.usgs.gov/b2c_usgs/b2c/start/\(xcm=r3standardpitrex_prd\)/.do](http://store.usgs.gov/b2c_usgs/b2c/start/(xcm=r3standardpitrex_prd)/.do) go to this webpage and look on the extreme right side to the box titled TOPO MAPS DOWNLOAD TOPO MAPS FREE.

<http://www.geographynetwork.com/> Go here and try their top 5 map services. My favorite is 'USGS Elevation Date.' Zoom in on your favorite places and see great shaded relief images. One of my favorites is the Great Sand Dunes National Park in south central Colorado. Nice Dunes.

<http://antwrp.gsfc.nasa.gov/apod/asropix.html> Astronomy picture of the day--awesome. I click this page everyday.

<http://www.spacimaging.com/gallery/ioweek/iow.htm> Amazing satellite images. Check out the gallery.

<http://www.ngdc.noaa.gov/seg/topo/globegal.shtml> More great maps to share with kids and students.

www.ccgeo.org Don't forget we have our own we page.

<http://terra.nasa.gov/gallery/> Great satellite images of Earth.

www.ermaper.com They have a great free downloadable viewer for TIFF and other graphic files called ER Viewer.

<http://terrasrver.com> Go here to download free aerial photo images that can be plotted under your digital land and well data. Images down to 1 meter resolution, searchable by Lat Long coordinate. Useful for resolving well location questions.

TYPE LOGS OF SOUTH TEXAS FIELDS by Corpus Christi Geological Society

NEW (2009-2010)TYPE LOGS IN RED; ***2011;**

lost now found

ARANSAS COUNTY

Aransas Pass/McCampbell Deep
Bartell Pass
Blackjack
Burgentine Lake
Copano Bay, South
Estes Cove
Fulton Beach
Goose Island
Half Moon Reef
Nine Mile Point
Rockport, West
St. Charles
Tally Island
Tract 831-G.O.M. (offshore)
Virginia

BEE COUNTY

Caesar
Mosca
Nomanna
Orangedale(2)
Ray-Wilcox
San Domingo

Tulsita Wilcox

Strauch_Wilcox

BROOKS COUNTY

Ann Mag
Boedecker
Cage Ranch
Encintas
ERF
Gyp Hill

Gyp Hill West

Loma Blanca
Mariposa
Mills Bennett
Pita
Tio Ayola
Tres Encinos

CALHOUN COUNTY

Appling
Coloma Creek, North
Heyser
Lavaca Bay
Long Mott
Magnolia Beach
Mosquito Point
Olivia
Panther Reef
Powderhorn
Seadrift, N.W.
Steamboat Pass
Webb Point
S.E. Zoller

CAMERON COUNTY

Holly Beach
Luttes
San Martin (2)
Three Islands, East

Vista Del Mar

COLORADO COUNTY

E. Ramsey
Graceland N. Fault Bik
Graceland S. Fault Bik

DEWITT COUNTY

Anna Barre
Cook
*******Nordheim**
Smith Creek
Warmleys

Yorktown, South

DUVAL COUNTY

DCR-49
Four Seasons
Good Friday
Hagist Ranch
Herbst
Loma Novia
Petrox

Seven Sisters

Seventy Six, South

Starr Bright, West

GOLIAD COUNTY

Berclair
North Blanca
Bombs
Boyce
Cabeza Creek, South
Goliad, West

St Armo

Terrell Point

HIDALGO COUNTY

Alamo/Donna
Donna
Edinburg, West
Flores-Jeffress
Foy
Hidalgo

LA Blanca

McAllen& Pharr

McAllen Ranch

Mercedes

Monte Christo, North

Penitas

San Fordyce

San Carlos

San Salvador

S. Santallana

Shary

Tabasco

Weslaco, North

Weslaco, South

JACKSON COUNTY

Carancahua Creek
Francitas
Ganado & Ganado Deep
LaWard, North
Little Kentucky

Maurbro

StewartSwan Lake

Swan Lake, East

Texana, North

West Ranch

JIM HOGG COUNTY

Chaparosa
Thompsonville,N.E.

JIM WELLS COUNTY

Freebom
Hoelsher
Palito Blanco
Wade City

KARNES COUNTY

Burnell
Coy City
Person
Runge

KENEDY COUNTY

Candelaria
Julian
Julian, North
Laguna Madre

Rita

Stillman

KLEBERG COUNTY

Alazan
Alazan, North
Big Caesar
Borregos
Chevron (offshore)

Laguna Larga

Seeligson

Sprint (offshore)

LA SALLE COUNTY

*****Pearsall**

LAVACA COUNTY

Hallettsville
Hope
Southwest Speaks

Southwest Speaks Deep

LIVE OAK COUNTY

Atkinson
Braslau
Chapa
Clayton
Dunn

Harris

Houdman

Kittie West-Salt Creek

Lucille

Sierra Vista

Tom Lyne

White Creek

White Creek, East

MATAGORDA COUNTY

Collegeport

MCMULLEN COUNTY

Arnold-Weldon

Brazil

Devil's Waterhole

Hostetter

Hostetter, North

NUECES COUNTY

Agua Dulce (3)
Arnold-David
Arnold-David, North
Baldwin Deep
Calallen
Chapman Ranch
Corpus Christi, N.W.
Corpus Christi West C.C.
Encinal Channel
Flour Bluff/Flour Bluff, East
GOM St 9045(offshore)

Indian Point

Mustang Island

Mustang Island, West

Mustang Island St.

889S(offshore)

Nueces Bay/Nueces Bay

West

Perro Rojo

Pita Island

Ramada

Redfish Bay

Riverside

Riverside, South

Saxet

Shield

Stedman Island

Turkey Creek

REFUGIO COUNTY

Bonnieview/Packery Flats

Greta

La Rosa

Lake Pasture

Refugio, New

Tom O'Connor

SAN PATRICIO COUNTY

Angelita East

Commonwealth

Encino

Enos Cooper

Geronimo

Harvey

Hiberia

Hodges

Mathis, East

McC Campbell Deep/Aransas Pass

Midway

Midway, North

Odem

Plymouth

Portilla (2)

Taft

Taft, East

White Point, East

STARR COUNTY

El Tanque

Garcia

Hinde

La Reforma, S.W.

Lyda

Ricaby

Rincon

Rincon, North

Ross

San Roman

Sun

Yturria

VICTORIA COUNTY

Helen Gohike, S.W.

Keeran, North

Marcado Creek

McFaddin

Meyersville

Placedo

WEBB COUNTY

Aquilares/Glen Martin

Big Cowboy

Bruni, S.E.

Cabezon

Carr Lobo

Davis

Hirsch

Juanita

Las Tiendas

Nicholson

O'Hem

Olmitos

Tom Walsh

WHARTON COUNTY

Black Owl

WILLACY COUNTY

Chile Vieja

La Sal Vieja

Paso Real

Tenerias

Willamar

ZAPATA COUNTY

Benavides

Davis, South

Jennings/Jennings, West

Lopeno

M&F

Pok-A-Dot

ZAVALA COUNTY

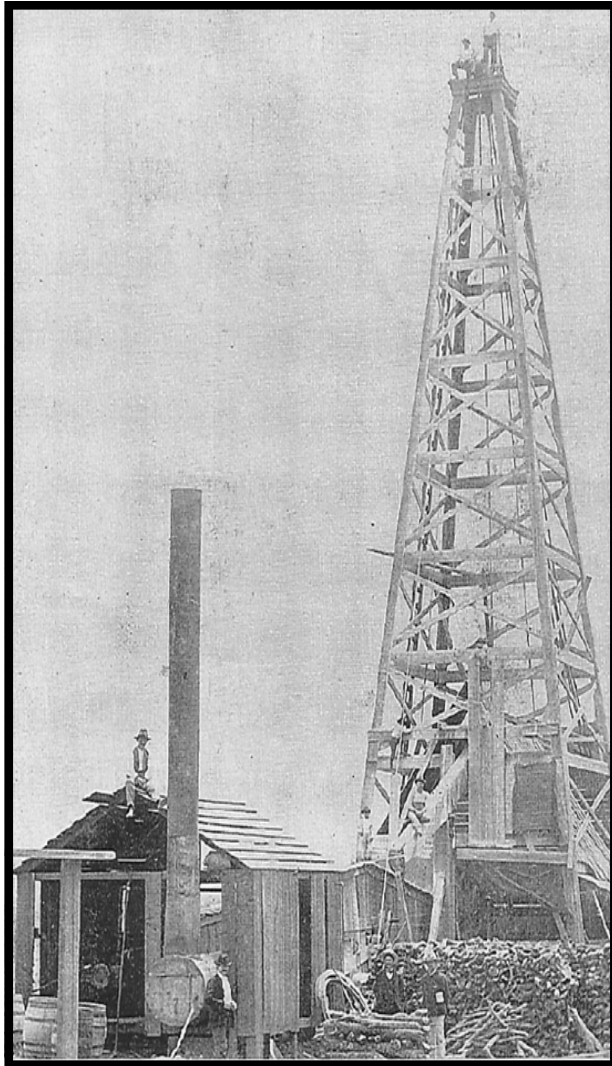
El Bano

Call Coastal Bend Geological Library, Maxine: 361-883-2736
1 log -- \$10 each, 5-10 logs \$9 each and 10 + logs \$8.00 each -- plus postage. & paper

OIL MEN
TALES FROM THE SOUTH TEXAS OIL PATCH
DVD
MEMBER PRICE \$25
NON-MEMBER \$30



To Order DVD
Sebastian Wiedmann
swiedmann.geo@gmail.com
If mailed add \$5.00



Corpus Christi Geological Society
C/O Javelina Press
P. O. Box 60181
Corpus Christi, TX 78466

Order Form

Mail order form for Wooden rigs-Iron Men. The price is \$75 per copy, which includes sales tax, handling, and postage

Name _____

Address _____

City, State, Zip _____

No. of books _____ Amount enclosed _____

Send to Corpus Christi Geological Society Book Orders

P. O. Box 60181

Corpus Christi, TX. 78466 Tax exempt# if applicable _____

Wooden Rigs—Iron Men

The Story of Oil & Gas in South
Texas

By Bill & Marjorie K. Walraven

Published by the
Corpus Christi Geological Society



Brian Desaulnier
Owner / President
512.923.2059
brian@gtls.us

P.O. Box 305 Office: 512.308.8200
Red Rock, TX 78662 Fax: 830.839.4832
www.geotechloggingservices.com

david becker

geologist

David Becker
exploration
geologist

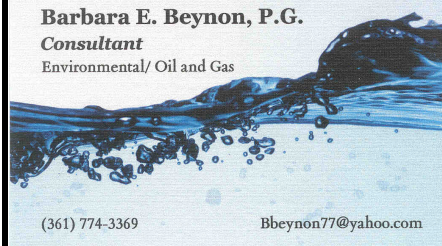
o: (361) 884-3613
f: (888) 869-2011

600 leopard st. ste 706
corpus christi. tx 78473

dkbecker1137@sbcglobal.net

Barbara E. Beynon, P.G.
Consultant

Environmental/ Oil and Gas



(361) 774-3369

Bbeynon77@yahoo.com



Bier Seis, Inc.
Geophysical Consulting

David Biersner, President
Garden Ridge, TX
Cell: 281.744.7457
E-mail: bierseis@yahoo.com

Field Quality Control
Program Management
Insured
MESA, GPSismic, ArcView



Dawn S. Bissell
Geoscientist

Advent Geoscience Consulting, LLC
Corpus Christi, TX 78411

Phone: 361-960-2151
Email: bissells@swbell.net



James Bloomquist
Business Development Manager
jbls@integrityseismic.com

Office 713-357-4706 ext7008 16420 Park Ten Place
Cell 281-660-9695 Suite 240
Fax 713-357-4709 Houston, TX 77084

MUD LOGGING SERVICE



Since 1961

MIKE BULLARD

(361) 221-9717 Office (361) 211-9715 Fax
(361) 522-1245 Cell P.O. Box 1011
E-Mail md_bullard@sbcglobal.net Kingsville, Tx 78363



flamingo
SEISMIC SOLUTIONS

Elizabeth Chapman
Business development/marketing

11777 Katy Freeway, Ste 570 Houston, TX 77079
office: 281.977.7432 ext 109 fax: 281.829.1788
cell 713.817.4232 email: elizabeth@flamingoseismic.com

www.flamingoseismic.com

James L. Claughton
CONSULTING GEOLOGIST

Office | 361-887-2991 615 North Upper Broadway
Fax | 361-883-4790 Suite 1935
Cell | 361-960-2014 Corpus Christi, Texas
clausote@sbcglobal.net 78401-0779

TEXAS LONE STAR
PETROLEUM CORPORATION



JEFF COBBS
President - Geologist

615 Leopard St., Suite 336 Office (361) 883-2911
Corpus Christi, Texas 78401-0610
jc@tlspc.com Cell (361) 960-0530

Jim Collins
Geoscientist



361.537.4034
jim@gulfcoastgas.com

Imagine Resources, LLC

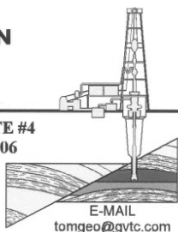
Frank G Cornish
President/Consulting Geologist
5103 Turnabout Lane
Austin, Tx 78731

361-563-9184
frank.cornish@gmail.com

TOM DAVIDSON
GEOLOGIST

28550 IH-10 WEST SUITE #4
BOERNE, TEXAS 78006

BUS: (210) 844-8963
RES: (830) 981-5883
FAX: (830) 981-5567
CEL: (210) 844-8963

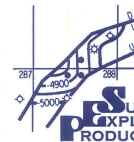


E-MAIL
tomgeo@gvfc.com

SEIMAX
TECHNOLOGIES

Sara Davis
Director of Marketing & Business Development

4805 Westway Park Blvd., Houston, TX 77041
p: 832.554.4301 d: 832.554.4314 c: 713.256.8737
sdavis@seimaxtech.com



LEIGHTON L. DEVINE
EXPLORATION GEOLOGIST

FROST BANK PLAZA
802 N. CARANCAHUA, SUITE 1000
CORPUS CHRISTI, TEXAS 78470

OFFICE: (361) 884-8824
FAX: (361) 884-9623
MOBILE: (361) 510-8872
ldevine@suemaur.com

ONE APEX ENERGY, INC.

CHRISTIAN DOHSE
Consulting Geologist

(361) 877-3431
CHRISTIAN.DOHSE@GMAIL.COM
CORPUS CHRISTI, TX



Tommy Dubois
Geologist

2627 CR 312
Yoakum, Texas 77995

361-215-0223 tvdubois@yahoo.com



FRONTERA EXPLORATION CONSULTANTS

Geological and Geophysical Interpretation
SMT Kingdom™ Workstation

THOMAS E. EWING, PH.D.
AAPG CPG #4538; Texas Lic. Geol. #1320

Since
1982

19240 Redland Road, Suite 250, San Antonio, TX 78259
(210) 494-4526; (210) 824-6423 FAX
tewing@fronteraexploration.com

YOUR CARD COULD BE HERE!!!

\$30 FOR 10 ISSUES AD. PRICES PRO-RATED. EMAIL ROBBY AT ROBERT.STERETT@GMAIL.COM.

<p>FOX ENVIRONMENTAL SERVICES, LLC PLANNING PERMITTING REAL ESTATE MARKETING MAPS</p> <p>LAURA M. FOX LAURA@FOXENVIRONMENTALSERVICES.COM</p> <p>P.O. Box 745 ROCKFORD, TEXAS 78381 361.319.3119</p>	 <p>MATTHEW FRANEY <i>Geologist</i></p> <p>FRANEY OIL OPERATIONS, INC. 600 Leopard Street, Suite 904 361-563-6327 Corpus Christi, TX 78401 mfraney57@att.net</p>	<p>Enrique (Rick) Garza Operation Supervisor US Land</p>  <p>Rick.Garza@GlobalGeophysical.com DIRECT +1 713-808-7428 MOBILE +1 361-701-6480 FAX +1 713-808-7928 13927 South Gessner Road Missouri City, Texas 77489 USA www.GlobalGeophysical.com</p>
<p>GISLER BROTHERS LOGGING CO., INC.</p> <p>P.O. BOX 485 106 E. MAIN RUNGE, TX 78151</p>  <p>Wes Gisler Bus. (830) 239-4651 Mobile (361) 676-1369 wes@gislerbrotherslogging.com</p>	 <p>RAY GOVETT, Ph. D. CONSULTING GEOLOGIST 361-855-0134</p>	<p>Robert Graham President grexploration@gmail.com</p> <p>Phone 361-882-7681 Fax 361-882-7685 Cell 361-774-3635</p>  <p><i>Exploratory Prospects & Production Development</i></p> <p>Mall: P. O. Box 1843 Corpus Christi, Texas 78403-1843</p> <p>Office: 606 N. Carancahua, Ste. 610 Corpus Christi, Texas 78401-0634</p>
 <p>HART EXPLORATION, LLC.</p> <p>RICK HART Geologist / Owner</p> <p>P.O. Box 729 Coldspring, Texas 77331</p> <p>Cell: 512-626-3053 Email: hartexploration@aol.com</p>	<p>RIVIERA EXPLORATION, LLC</p> <p>H. TONY HAUGLUM <i>President</i></p> <p>600 LEOPARD ST. SUITE 1704 CORPUS CHRISTI TEXAS 78401</p> <p>PHONE 361.884.1811 FAX 361.884.8071 E-MAIL THAUGLUM@SWBELL.NET</p>	<p>Chuck Henry <i>Vice President, Geosciences</i></p>  <p>T 713.623.7139 M 713.501.9575 chenry@frostwoodenergy.com frostwoodenergy.com</p> <p>6520 Stacy Freeway, Suite 100 Houston, TX 77027 <i>Moving offices on Aug 15th</i></p>
 <p>BRENT F. HOPKINS PRESIDENT AND CEO GEOLOGIST</p> <p>OFFICE: (361) 884-8824 (ext. 1101) FAX: (361) 884-9623 CELL: (361) 215-4855 Email: brenth@suemaur.com</p> <p>539 N. CARANCAHUA, SUITE 1100 CORPUS CHRISTI, TEXAS 78401-0999</p>	<p>James R. Jones Geologist</p> <p>7434 Long S Drive Corpus Christi, TX 78414 361-779-0537 jrjones5426@aol.com</p>	<p>EOG resources</p> <p>EOG Resources, Inc. 539 N. Carancahua Suite 900 Corpus Christi, TX 78401-0908 Direct: (361) 887-2681</p> <p>Randy Lambert Geological Advisor</p> <p>Fax: (361) 844-1546 randy_lambert@eogresources.com</p>
 <p>Louis R. Lambiotte Geologist</p> <p>LMP Petroleum, Inc. 615 N. Upper Broadway, Suite 1770 Corpus Christi, TX 78477 Tel: (361) 883-0923 Fax: (361) 883-7102 E-mail: geology@LMPexploration.com</p>	<p>CURTIS R. MAYO GEOLOGICAL CONSULTANT</p> <p>Reserve Analysis Prospect Evaluation Expert Witness Prospect Generation</p> <p>Fredericksburg, Texas 78624 <i>CRM@</i> Office: 830.992.2938 Cell: 713.291.0186 E-Mail: CRM@CurtisMayo.com</p>	 <p>emerald bay EXPLORATION, LLC.</p> <p>PATRICK J. McCULLOUGH [President] patrickm@emeraldbayexp.com</p> <p>311 Saratoga Boulevard Corpus Christi, Texas 78417 361.852.6195 [c] 361.852.6676 [f] 361.876.7881 [c]</p>
 <p>VALOR EXPLORATION, LLC</p> <p>Armando Medina <i>Owner / Geologist</i></p> <p>8610 N. New Braunfels #703 • San Antonio, TX 78217 (210) 538-2170 • amedina@valorexploration.com</p>	 <p>J. Mark Miller President</p> <p>Phone (361) 883-7700 Fax (361) 883-7701 mark@millersmithgas.com</p> <p>545 N. Upper Broadway Suite 400 Corpus Christi, Texas 78476</p> <p>Wellhead Gas Marketing</p>	<p>Mailing Address 615 Leopard, Ste. 640 Corpus Christi, Texas 78401-0641 361.882.7888 phone 361.882.7889 fax 361.946.2581 mobile</p> <p>Contact Address 1701 Southwest Parkway, Ste. 109 College Station, Texas 77840 866.946.2581 phone 866.946.2580 fax</p> <p>pmueller@muclresp.com www.muclresp.com</p>  <p>J. Paul Mueller, Jr. President</p>

YOUR CARD COULD BE HERE!!!
\$30 FOR 10 ISSUES AD. PRICES PRO-RATED. EMAIL ROBBY AT ROBERT.STERETT@GMAIL.COM.



Daniel J. Neuberger
Geologist and President

Austin Office:
712 Windsong Trail
West Lake Hills, Texas 78746

Office (361) 548-7723
Home (512) 306-1223
dan@neuoilandgas.com

Patrick Nye
President
patrick@nyexp.us

Office: (361) 452-1435
Cell: (361) 658-1089
Res: (361) 238-2146

NYE
Exploration & Production, LLC

802 N. Carancahua, Suite 1840
Frost Bank Plaza
Corpus Christi, TX 78401
www.nyexp.us



BRIAN E. O'BRIEN
BEO INVESTMENTS, LTD.

510 Bering Dr.
Suite 600
Houston, Tx. 77057

Office: 713-783-4883
Home: 713-784-7911
Cell: 713-899-5164
E-mail: bobrien@saxetpetroleum.com



Ken Orlaska
Account Manager

281-457-8440
Direct: 281-249-5051
Fax: 281-558-8096
Cell: 832-455-1818
e-mail: korlaska@geotrace.com
12141 Wickchester Lane, Suite 200
Houston, Texas 77079
www.geotrace.com



**Herradura
Petroleum, Inc.**
JEFF OSBORN
Geologist

711 N. Carancahua, Ste. 1750
Corpus Christi, Texas 78475
e-mail: jeff@herradurapetroleum.com

Office: 361-884-6886
Fax: 361-884-9102
Cell: 361-537-2349



RICHARD E. PAIGE
CHIEF PROJECT GEOLOGIST

539 N. CARANCAHUA, SUITE 1100
CORPUS CHRISTI, TEXAS 78401-0999

OFF: (361) 884-8824 (ext. 1121)
CELL: (361) 563-1517
HOME: (361) 887-1912
rpaige@esuemauroil.com

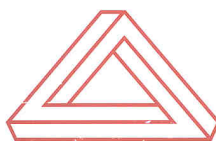
Richard M. Parker
Consulting Geologist

Adjunct Professor - Geosciences
Texas A&M University - Kingsville
Registered State of Texas Board of Professional Geoscientists
License # 6056

12802 Max Rd.
Brookside Village, Texas 77581
Email: rparkstar@sbcglobal.net
Email: Richard.Parker@tamuk.edu

713-724-4380 Cell 1
713-206-3158 Cell 2
281-412-0745 Home
361-593-4072 A&M

Lee Prejean
Business Development Manager



800.256.1147
225.247.9038
www.stratagraph.com
lprejean@stratagraph.com

P.O. Box 53848
Lafayette, LA 70505

STRATAGRAPH
Accurate Data. Reliable Solutions



Beth Priday
Geologist

615 North Upper Broadway
Suite 525, WF168
Corpus Christi, Texas 78401
Bus (361) 882-3046
Fax (361) 882-7427

Mobile: (361)443-5593 • E-mail: bpriday@virtexoperating.com

Minerals Exploration and Mining
Uranium In Situ Leach

Richard M. Rathbun, Jr.
Certified Professional Geologist 9544 / AIPG
Texas Board of Prof. Geoscientists / Lisc. No. 4679

921 Barracuda Pl.
Corpus Christi, Texas 78411

(361) 903-8207
rathbunassoc@msn.com



Barry J. Rava
President

Mobile: 281-235-7507
Office: 713-621-7282

barry@icarusog.com
www.icarusog.com

P.O. Box 820253
Houston, TX 77282-0253

Deliveries
1710 S. Dairy Ashford Rd., Ste. 202
Houston, TX 77077



Wireline Services

Weatherford International Ltd.
401 E. Sonterra Blvd., Suite 1
San Antonio, Texas 78258
USA

Sam Roach
US Gulf Coast Wireline Sales

+1 210.930.7588 Direct
+1 210.930.7610 Fax
+1 210.241.2463 Mobile

sam.roach@weatherford.com
www.weatherford.com

First Rock, Inc.

RGR Production First Rock I, LLC

Gregg Robertson

Main Office:
600 Leopard, Suite 1800
Corpus Christi, TX 78401
361-884-0791

San Antonio:
7979 Broadway, Ste 207
San Antonio, TX 78209
210-822-2551

361-884-0863 Facsimile
361-993-6357 Home
361-215-5559 Cell
210-260-0300 Mobile

firstrockinc@msn.com



Alvin Rowbatham
Sales, Gulf of Mexico

Main +1 713 789 7250
Direct +1 281 781 1065
Fax +1 713 789 7201
Mobile +1 832 372 2366
alvin.rowbatham@iongeo.com

2105 CityWest Blvd. | Suite 900
Houston, TX 77042-2839 USA

TOM SELMAN
selmanlog.com
tselman@selmanlog.com

Ofc. (432) 563-0084
(800) 578-1006
Cell (432) 288-2259

SELMAN
AND ASSOCIATES, LTD.

GEOLOGICAL CONSULTING / SURFACE LOGGING SERVICES

P.O. Box 61150 4833 Saratoga #624 P.O. Box 2993
Midland, TX 79711 Corpus Christi, TX 78413 Rock Springs, WY 82902



Petrophysics, Inc.
Velocity Surveys - Synthetics - Sonic Log Data

P.O. Box 863323
Plano, Texas 75086

713.560.9733
jsmith@petrophysics.com
www.petrophysics.com

YOUR CARD COULD BE HERE!!!

\$30 FOR 10 ISSUES AD. PRICES PRO-RATED. EMAIL ROBBY AT ROBERT.STERETT@GMAIL.COM.

Crossroads Exploration

Gloria D. Sprague
Geologist

189 North First Street, Suite 111 Office: 936-254-3600
Timpson, Texas 75975 Mobile: 936-488-9428

gsprague4532@att.net

Charles A. Sternbach, Ph.D.
President

Star Creek Energy Company
Oil and Gas Exploration

800 Wilcrest Drive, Suite 230
Houston, Texas 77042
office: 281.679.7333
cell: 832.967.7333
carbodude@gmail.com



www.starcreekenergy.com

Dennis A. Taylor
President and Chief Geologist
dennis@amshore.com

Off: (361) 888-4496
Fax: (361) 888-4588
Direct Line: (361) 844-6728
Cell: (972) 672-9916



AMERICAN SHORELINE, INC.
AMSHORE US WIND, LLC

802 N. Carancahua Street, Suite 1250
Corpus Christi, Texas 78401-0019
www.amshore.com

Environmental Exploration & Production

JEANIE TIMMERMANN
GEOSCIENTIST
TX LICENSE #2289

7214 Everhart #9 (361) 991-7451
Corpus Christi, TX 78413 jimmermann74@ymail.com



Davis Petroleum Corp.

www.davispetroleumcorp.com

Jim Travillo
Senior Geoscientist

1330 Post Oak Boulevard
Suite 600
Houston, Texas 77056

Direct: 713.439.6773
Main: 713.626.7766
Fax: 713.626.7775
Cell: 713.823.9332

jtravillo@davcos.com

STALKER ENERGY, L.P.

WILLIAM A. WALKER, JR.
Certified Petroleum Geologist
bwalker@stalkerenergy.com

1717 West 6th Street, Ste. 230 • AUSTIN, TX 78703
2001 Kirby Dr., Ste. 950 • HOUSTON, TX 77019

AUSTIN

512.457.8711
cell: 512.217.5192
fax: 512.457.8717

HOUSTON

713.522.2733
cell: 512.217.5192
fax: 713.522.2879

SEBASTIAN P. WIEDMANN
GEOSCIENTIST

WILSON PLAZA WEST
606 N. CARANCAHUA, SUITE 500
CORPUS CHRISTI, TEXAS 78401 MOBILE (361) 946-4430
swiedmann.geo@gmail.com

ION
GEOVENTURES®

Dave Willis
Onshore Sales

Main +1 713 789 7250
Direct +1 281 781 1035
Mobile +1 281 543 6189
Fax +1 713 789 7201
dave.willis@iongeo.com

2105 CityWest Blvd. | Suite 900
Houston, TX 77042-2839 USA

ROLF WOODS
Exploration Geologist

ESENJAY
PETROLEUM CORPORATION

500 N. Water St., Ste. 1100S — CORPUS CHRISTI, TX 78401-0236
Work: (361) 883-7464 • Fax: (361) 883-3244 • Cell: (361) 947-9200
e-mail: rwwoods@gmail.com

GeoGraphix

www.lmk.com



Mark Mixon
Account Manager

mmixon@lmt.com
P: +1 281 435 5657
D: +1 281 846 3310
C: +1 713 419 8916
F: +1 281 879 0135
LMK Resources Inc.
6051 North Course Drive, Suite 300,
Houston, TX 77072, USA