

BULLETIN

Corpus Christi Geological Society



and

Coastal Bend Geophysical Society



**November/December
2017
ISSN 0739 5620**

Compliments of

American Shoreline, Inc.



Specializing in
Oil & Gas Exploration
& Wind Energy

802 N. Carancahua
Frost Bank Plaza, Suite 1250
Corpus Christi, Texas 78401
(361) 888-4496

www.amshore.com



TABLE OF CONTENTS

Officers, Committees and Chairpersons for CCGS/CBGS.....	2 & 3
CCGS/CBGS Joint Calendar of Meetings & Events.....	4 & 5
CCGS President’s Letter.....	7
Blood Drive.....	8
CBGS President’s Letter.....	9
Luncheon Meeting Announcement for November/December.....	13
Fiery Ice 2017 – 11 th International Workshop on Methane Hydrate Research.....	16
Seismology in Aaska: Earthquakes, Bears and High Performance Computing.....	20
CCGS papers available for purchase at the Bureau of Economic Geology.....	32
Geo Link Post.....	33
Type Logs of South Texas Fields.....	34
Order Oil Men DVD.....	35
Wooden Rigs Iron Men.....	36
Professional Directory.....	37



CORPUS CHRISTI GEOLOGICAL SOCIETY

P.O. BOX 1068* C.C. TX. 78403

2017-2018

www.ccgeo.org

OFFICERS

President	Austin Nye	361-452-1435	austin@nyexp.us
President Elect	Frank Cornish	361-883-0923	frank.cornish@gmail.com
Vice President	William Thompson	361-242-3113	william.thompson@rrc.texas.gov
Secretary	Randy Bissell	361-885-0110	randyb@headingtonenergy.com
Treasurer	Casey Mibb	361-726-1092	clmibb@yahoo.com
Past President	Barbara Beynon	361-774-3369	bbeynon77@yahoo.com
Councilor I	Rick Paige	361-884-8824	rickp@suemaur.com
Councilor II	Brent Hopkins	361-884-8824	brent@suemaur.com

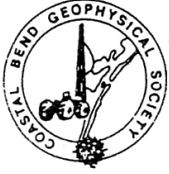
AAPG DELEGATE

EDITORS

Bulletin Editor	Marian Wiedmann	361-855-2542	wiedgulf@gmail.com
Bulletin Tech. Editor	Sebastian Wiedmann	361-946-4430	swiedmann.geo@gmail.com
Web Master	Josh Pollard	361-654-3100	support@interconnect.net

GEOLOGICAL SOCIETY COMMITTEES & CHAIRPERSONS

Advertising/Bus. Cards	Robby Sterett	361-739-5618	robert.sterett@gmail.com
Arrangements	Wes Gisler & Will Graham	830-239-4651 361-885-0110	arrangements@ccgeo.org willg@headingtonenergy.com
Bloodmobile	Mike Lucente	361-883-0923	mikel@impexploration.com
Earth Day	Alan Costello	361-888-4792	acostello@royalcctx.com
Continuing Ed.	Stephen Thomas	361-660-8694	stthomas@spnaturalresources.com
Education	Dawn Bissell	361-960-2151	bissells@swbell.net
Scholarship	J. R. Jones	361-779-0537	jrjones5426@aol.com
Fishing Tournament	Leighton Devine	361-882-8400	ldevine@suemaur.com
History	Ray Govett	361-855-0134	ray30@hotmail.com
Membership	Dorothy Jordan Randy Bissell	361-885-0110 361-885-0113	dorothyj@headington.com randyb@headington.com
Type Logs	Frank Cornish	361-883-0923	frank.cornish@gmail.com
University Liaison	Casey Mibb Wesley Garcia	361-726-1092	clmibb@yahoo.com



COASTAL BEND GEOPHYSICAL SOCIETY
P.O. BOX 2741*C.C. TX. 78403
2017-2018

OFFICERS

President	Dr. Subbarao Yelisetti	361-593-4894	subbarao.yelisetti@tamuk.edu
Vice President	Lonnie Blake	361-883-2831	lonnie_blake@eogresources.com
Secretary/Treasurer	Matt Hammer	361-888-4792	mhammer@royalcctx.com
Golf Chairman	Lonnie Blake	361-883-2831	lonnie_blake@eogresources.com
Scholarship Chairman	Ed Egger	361-947-8400	edegger69@gmail.com
Education	Dr. Robert Schneider	361-593-3589 361-447-2381	Robert.schneider@tamuk.edu

**Visit the geological
web site at
www.ccgeo.org**

CCGS/CBGS JOINT MEETING SCHEDULE 2017-2018

September 2017							October 2017							November 2017						
S	M	T	W	Th	F	S	S	M	T	W	Th	F	S	S	M	T	W	Th	F	S
					1	2	1	2	3	4	5	6	7			1	2	3	4	
3	4	5	6	7	8	9	8	9	10	11	12	13	14	5	6	7	8	9	10	11
10	11	12	13	14	15	16	15	16	17	18	19	20	21	12	13	14	15	16	17	18
17	18	19	20	21	22	23	22	23	24	25	26	27	28	19	20	21	22	23	24	25
24	25	26	27	28	29	30	29	30	31	26	27	28	29	30						

Monday, Oct. 2, 2017 6:00 pm BBQ Kickoff at Hoegemeyers & Presentation by Carl Tape, Ph.D., Associate Professor of Geophysics, Geophysical Institute, University of Alaska Fairbanks “*Seismology in Alaska: Earthquakes, Bears, & High-Performance Computing.*”
 Oct., 18, 2017 11:30am-1:00pm Speaker: David Mittlefehldt, PhD., Planetary scientists, Astromaterials Research & Exploration Science (ARES), Johnson Space Center, National Aeronautics & Space Administration (NASA) “Mars Exploration Rover Opportunity: Exploring the Rim of Endeavour Crater on Mars, Day-4,841+of a 90-Day Mission.”

11:30 am – 1:00 pm
 Speaker: Eugene L. Ames, Jr.
 “The History of Discovery: The Largest Oil Field in the World & Other Musing by a Geologist & Wildcatter.”

December 2017							January 2018							February 2018						
S	M	T	W	Th	F	S	S	M	T	W	Th	F	S	S	M	T	W	Th	F	S
					1	2	1	2	3	4	5	6					1	2	3	
3	4	5	6	7	8	9	7	8	9	10	11	12	13	4	5	6	7	8	9	10
10	11	12	13	14	15	16	14	15	16	17	18	19	20	11	12	13	14	15	16	17
17	18	19	20	21	22	23	21	22	23	24	25	26	27	18	19	20	21	22	23	24
24	25	26	27	28	29	30	28	29	30	31	25	26	27	28						
31																				

Combined
 November/December for the
 Holidays.

11:30 am – 1:00 pm
 Speaker: To be determined

11:30 am – 1:00 pm
 Speaker: Peter Wang,
 Geophysical Technical
 Advisor, Paradigm “A New
 Technique of Lithology and
 Fluid Content Prediction from
 Prestack Data: An Application
 to a Carbonate Reservoir”

CCGS/CBGS Joint Meeting Schedule 2017-2018

March 2018							April 2018							May 2018						
S	M	T	W	Th	F	S	S	M	T	W	Th	F	S	S	M	T	W	Th	F	S
				1	2	3	1	2	3	4	5	6	7			1	2	3	4	5
4	5	6	7	8	9	10	8	9	10	11	12	13	14	6	7	8	9	10	11	12
11	12	13	14	15	16	17	15	16	17	18	19	20	21	13	14	15	16	17	18	19
18	19	20	21	22	23	24	22	23	24	25	26	27	28	20	21	22	23	24	25	26
25	26	27	28	29	30	31	29	30						27	28	29	30	31		

11:30 am – 1:00 pm
Speaker: To be determined

11:30 am – 1:00 pm
Speaker: To be determined

11:30 am-1:00 pm
Speaker: To be determined

Calendar of Meetings and Events

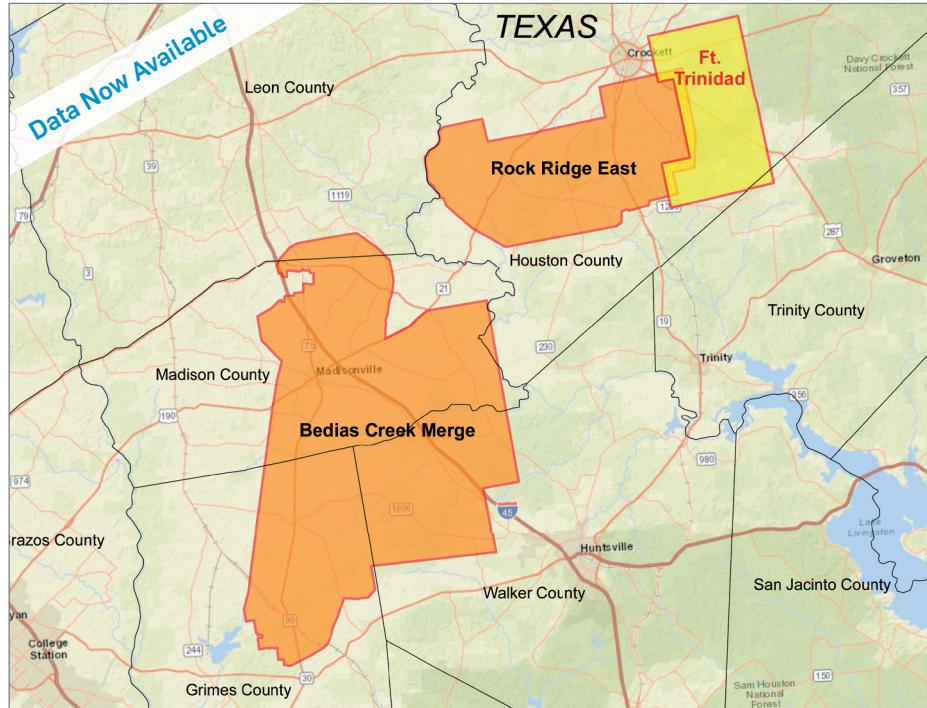
Calendar of Area Monthly Meetings

Corpus Christi Geological/Geophysical Society.....	Third Wed.—11:30a.m.
SIPES Corpus Christi Luncheons.....	Last Tues.—11:30a.m.
South Texas Geological Society Luncheons.....	Second Wed—noon San Antonio
San Antonio Geophysical Society Meetings.....	Fourth Tuesday
Austin Geological Society.....	First Monday
Austin Chapter of SIPES.....	First Thursday
Houston Geological Society Luncheons.....	Last Wednesday
Central Texas Section of Society of Mining, Metallurgy & Exp.....	2 nd Tues every other month in San Antonio



New Ft. Trinidad 3D Survey Houston and Trinity Counties, TX

YOU'VE ARRIVED



CGG continues to expand its East Texas footprint with high-quality 3D projects while illuminating the stacked pay formations.

Data is already available from our Bedias Creek Merge and Rock Ridge East projects. Orthorhombic PSTM from our newest project Ft. Trinidad is also now available.

The right data, in the right place, at the right time

Scott Tinley
☎ +1 832 351 8544
✉ scott.tinley@cgg.com

Cheryl Oxsheer
☎ +1 832 351 8463
✉ cheryl.oxsheer@cgg.com



cgg.com/ROP





PRESIDENT'S LETTER

Wow, what a great talk by Dr. David Mittlefehldt of NASA. His passion for geology was contagious and his descriptions of his findings through the Mars Exploration Rover (MER) were enthralling. Thank you all so much for your attendance as Dr. Mittlefehldt thought he might be addressing a room of “about 20.” He was very encouraged to see the amount of students who attended and enjoyed the talk enough to be willing to return next year! Also, a big thank you to BJ Thompson for lining up the fantastic talks this year. I am looking forward to seeing everyone again in November for Eugene Ames’ talk about The History of Discovery: The Largest Oil Field in the World and Other Musings by a Geologist and Wildcatter.

Speaking of the convention: The 67th 2017 GCAGS Annual Convention is being held next month in San Antonio a few weeks from now beginning Wednesday, November 1 and ending Friday, November 3. Their website has a wealth of information and some cool action shots of some of our members from last year’s convention here in Corpus Christi.

One of the obvious needs we have is to bring a larger number of younger geoscientists to our ranks as the age gap is not decreasing in our industry. I would also like to urge our current membership to wedge yourselves in between students who congregate at one table and try to get them engaged and involved in our local industry and societies. Students reading this should take note of their ambitious counterparts who show up with resumes and rub elbows with potential future employers. To the younger members, please encourage your friends outside of the society to join you as a guest and introduce them around the room, hell, send me the bill for their lunch! Free lunches always seem to bring folks in the door. I also encourage our younger members to volunteer for board positions and become more involved. We can always use a fresh perspective and new ideas on the board. Also, our new meeting place has become more of a laid back social hour than a dreary board meeting. A huge thank you to the Bissell’s for generously hosting our boarder at their guest home.

Another big thank you to our current board members for helping me with this undertaking. I appreciate the opportunity to serve and invigorate our society.

Looking forward to seeing you at the next luncheon.

Austin Nye—President CCGS

Donate Blood

The Railroad
Commission of Texas

BLOOD DRIVE

MONDAY, DECEMBER 18th

10:00-12:00AM

When you give blood, the CCGS is listed with the
Blood Center as #4254!!

Photo I.D. Required.

All donors will receive a Sonic Coupon
And Donor Store Points



Coastal Bend Blood Center
Giving so that others may live





CBGS President's Letter

CBGS Scholarships

The board awarded two scholarships of \$2,000 each to undergraduate geophysics majors from Texas A&M University-College Station, and University of Houston. Another scholarship of similar value will be given to geophysics major from Texas A&M University-Kingsville in Spring 2018.

The following criteria is followed in awarding the scholarships.

1. Must be a citizen of the USA
2. Must have declared Major Geophysics at the main campus of the receiving university
3. Must have GPA 3.0
4. Must be in good standing with the school
5. Must make effort to attend a Coastal Bend Geophysical Society Meeting in Corpus Christi Texas after being awarded a scholarship to be recognized by the society.

Dr. Subbarao Yelisetti- President
Lonnie Blake- Vice President
Matt Hammer- Secretary/ Treasurer
Dr. Robert Schneider- Continuing Education
Lonnie Blake- Golf Chair
Ed Egger- Scholarship Chair

News

- According to the U.S. government, the U.S. shale production is set to rise for the 11th consecutive month in November, as U.S. oil prices stabilize around \$50 a barrel.
- The U.S. Energy Information Administration (EIA) reports that U.S. oil output is expected to increase by 82,000 barrels per day (bpd) to 6.12 million bpd.
- According to EIA drilling productivity report, the Eagle Ford oil output in Texas is set to rise by 2,500 barrels per day (bpd) to 1.6 million bpd.
- Permian production is forecast to rise by nearly 50,000 bpd to 2.7 million bpd, the highest level in records dating back to 2007 as reported by Catherine Ngai and Scott DiSavino on reuters.com.

- U.S. natural gas production was projected to increase to a record 60.9 billion cubic feet per day (bcfd) in November. That would be up almost 0.8 bcfd from the October and also the eighth monthly increase in a row as reported by Catherine Ngai and Scott DiSavino on reuters.com.
- The EIA projected gas output would increase in all of the big shale basins in November, with the biggest increase in Appalachia region as reported on reuters.com.

CBGS Business

CBGS currently has 52 members.

CBGS offered Basic Seismic Attributes course on 28th April, 2017 in EOG conference center in Corpus Christi and is looking forward to offer many such courses or workshops. Topic/speaker suggestions are welcome. Email your suggestions to Subbarao.Yelisetti@tamuk.edu or Lonnie_Blake@eogresources.com

CBGS organized its annual **Golf Tournament** to fund its scholarship program on October 6, 2017 at Northshore Country Club.

20 Players, 10 sponsors, 7 contributing cash, 3 contributing golf balls, coolers, etc.....

Raised \$1951 for the scholarship fund.

If you are interested in the Golf Tournament, please contact Lonnie Blake at 361-887-2665 or Lonnie_Blake@eogresources.com

BS degree in Geophysics, Minor in Geophysics and Certification in Geophysics offered at Texas A&M University-Kingsville from Fall 2017.

Please contact Dr. Subbarao Yelisetti (Subbarao.Yelisetti@tamuk.edu) or

Dr. Robert Schneider (Robert.Schneider@tamuk.edu) for additional information.

TAMUK will offer GEOL 4375/PHYS 5385-Seismology grad/undergrad stacked class on Tuesday and Thursday from 3:30-4:15 pm in Spring 2018. This is available for the professional community as well as our students. You can sign up as a “transient” student in order to take classes without actually enrolling in the school. If anyone in the professional community wishes to sign up for this, please contact the instructor, Dr. Subbarao Yelisetti Subbarao.Yelisetti@tamuk.edu

Education/Events

-SEG

See <http://seg.org/Education/Lectures/Honorary-Lectures/2017-HL-van-der-Baan> for SEG honorary lecture locations in Texas. Topic is human-induced seismicity.

See <http://seg.org/Education/Lectures/Distinguished-Lectures/2017-DL-Abma> for information about upcoming SEG distinguished lecture in Houston and other locations.

-AGU

AGU fall meeting in New Orleans, December 11th-15th.

See <https://agu.confex.com/agu/fm17/preliminaryview.cgi/programs.html> for sessions and program information.

Monthly Saying


"Find a trap - then drill it" - Arville Levorsen

Monthly Summary

Texas Oil and Gas Info	Current Month	Last Month	Difference	
Texas Production	MMBO/BCF	MMBO/BCF	MMBO/BCF	
Oil	83.9	87.8	-3.9	July
Condensate	8.6	9.2	-0.6	July
Gas	534.8	616.7	-81.9	July
	Current Month	Yr to date - 2017	Yr to date - 2016	
Texas Drilling Permits	903	9531	5576	September
Oil wells	215	2414	1629	September
Gas wells	64	543	289	September
Oil and Gas wells	554	5973	3296	September
Other	11	134	95	September
Total Completions	463	5408	8737	September
Oil Completions	318	4235	6596	September
Gas Completions	101	777	1682	September
New Field Discoveries	1	23	17	September
Other	4	14	49	September

Subbarao Yelisetti
President, CBGS

SPONSORS



Nueces Energy, Inc.
P.O. Box 252
Corpus Christi, Texas 78403
Office: (361) 884-0435
Fax: (361)-654-1436
www.nuecesland.com

Nueces Energy, Inc. is a complete land services company in the business of providing professional landmen and project management to various energy related jobs primarily in the oil and gas industry.

With over 30 years of industry experience, we specialize in determining surface and subsurface ownership and negotiating and acquiring contracts, rights of way agreements, and easements to provide our clients with the legal right to explore and develop oil and gas resources. We provide a full service land company capable of managing any project no matter how large or small.



THUNDER EXPLORATION, INC.
 Celebrating 30+ years of prospect generation and exploration in the following South Texas plays and trends.

Frio	San Miguel	Edwards
Jackson	Austin Chalk	Pearsall
Yegua	Eagle Ford	Sligo
Wilcox	Buda	Cotton Valley
Olmos	Georgetown	Smackover

Thunder is currently seeking non-operated working interest participation in projects and prospects.

Contact **Walter S. Light Jr.**
 President/Geologist
 713.823.8288
 EMAIL: wthunderx@aol.com

Headington Oil Company is now...



HEADINGTON
 ENERGY PARTNERS, LLC

Proudly operating in South Texas.

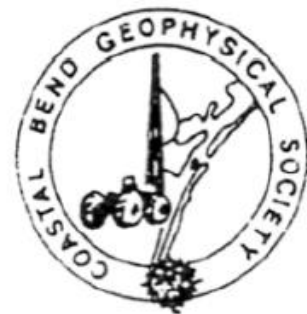
For more information contact:
 Randy Bissell, randyb@headingtonenergy.com or call 361-885-0113



Offices in Corpus Christi, Sarita, and McKinney, Texas - Exploring and Developing properties
 In South Texas, Permian Basin, East Texas & Oklahoma



CORPUS CHRISTI GEOLOGICAL SOCIETY
COASTAL BEND GEOPHYSICAL SOCIETY



LUNCHEON MEETING ANNOUNCEMENT

NOVEMBER 15, 2017

-
- Location:** Congressman Solomon P. Ortiz International Center, 402 Harbor Drive, Corpus Christi, TX 78401 ortizcenter.com
- Student Sponsor:** Imagine Resources, Nye Exploration, Viper Exploration, Ltd.
- Bar Sponsor:** Geophysical Insights
- Time:** 11:30 am Bar, Lunch follows at 11:45 am, Speaker at 12:00 pm
- Cost:** \$25.00 (additional \$10.00 surcharge without reservation; No-shows may be billed and non-RSVP attendees cannot be guaranteed a lunch); **FREE** for students with reservation (discounted by our generous sponsors)!
- Reservations:** Please **RSVP** by 4PM on the FRIDAY before the meeting!
E-Mail: arrangements@ccgeo.org

Please note that luncheon RSVPs are a commitment to the Ortiz Center and must be paid even if you can't attend the luncheon.

Imagine Resources, LLC
www.imagineresourcesllc.com

SPONSORS

 **GEOPHYSICAL
INSIGHTS**
FROM INSIGHT TO FORESIGHT
www.geoinsights.com


802 N. Carancahua, Suite 1840
Frost Bank Plaza
Corpus Christi, TX 78401
www.nyexp.us

VIPER
EXPLORATION,
LTD.



www.gislisbrotherslogging.com

**SPONSORSHIPS OPPORTUNITIES ARE AVAILABLE!
IF YOU WOULD LIKE TO SPONSOR, PLEASE CONTACT US AT:
arrangements@ccgeo.org**

***The History of Discovery: The Largest Oil Field in the World
and Other Musings by a Geologist & Wildcatter***

Presented by:

Eugene L. Ames, Jr.

Petroleum Geologist & Independent Oil and Gas Producer

About our Presenter:



Gene Ames, Jr. is a petroleum geologist and Independent Oil and Gas Producer with sixty years' experience in the oil business. Mr. Ames is a recipient of two of the most prestigious honors bestowed by the United States oil and gas industry, U.S. Tubular Steel Product's 'Chief Roughneck' Award and the Texas Oil & Gas Association's Distinguished Service Award. In the past he served as national Chairman of the Independent Petroleum Association of America ("IPAA") and as Chairman of the Texas Oil & Gas Association.

He holds a Bachelor of Science in Geology from the University of Texas. He is a fourth-generation oil man, who was born in the East Texas Oil Field during the East Texas oil boom where his grandfather and his father owned the Gladewater Refining Company and fractional working interests in more than 300 oil wells. Ames serves as Managing Partner of Compadre Energy, Ltd., a partnership formed as a platform for growth of oil and gas assets through Acquisition activity.

Under Ames management, as a founder and Chief Executive Officer, Venus Oil Company built a portfolio of operated and non-operated interests to approximately 5000 BOPD and 80 MMCFD gas in four states from more than five hundred oil and gas wells. He conceived and managed

Venus Oil's exploration programs that earned industry recognition for extending large plays for exploration and development, including a trillion plus cubic foot extension of the Downdip Yegua Trend into the Upper Texas Gulf Coast east of Houston with the discovery of the Vidor-Ames Field, a 170 BCFE Field in Orange County, Texas. Another play concept recognized and developed by Ames' exploration team was vast bypassed natural gas reserve potential in the deeper Cotton Valley Sands in North Central Louisiana. The Vernon Field was acquired and then sold by Ames to Anadarko Petroleum, and the concept developed by Ames' exploration team was proven when Anadarko drilled hundreds of wells and AAPG's designated Vernon Field as one of the giant gas fields developed in America in the first decade of the twenty-first Century.

He is a partner with EnergyNorthAmerica, LLC, an energy consulting firm whose principals are Wm. Jackson Coleman and Elizabeth Ames Coleman, Gene Ames' daughter, who served both as a member of the Texas State Legislature, and as a Member, and, Chairman of the Railroad Commission of Texas.

He has served as Chairman of the Board of Directors of the Southwest Research Institute, and, is, currently a member of the Board of Directors of that organization. Under his leadership, of the Independent Petroleum Association of America, IPAA was one of the founders of the annual North American Prospect Exposition (NAPE).

Mr. Ames was appointed and served two terms on the National Petroleum Council, advisory board to the United States Secretary of Energy. From 1994 to 1996 he served as Chairman of the Oil and Gas Policy Committee of the National Republican Party.

He has served as a Member of the Advisory Council of the University of Texas Geology Foundation. His affiliations include the American Association of Petroleum Geologists; Society of Independent Professional Earth Scientists; and, the South Texas Geological Society. He is a member of the All-American Wildcatters.





FIERY ICE 2017 - Corpus Christi, Texas, USA, 6-8 December 2017

The website for the 11th International Workshop on Methane Hydrate Research and Development is now open: <http://www.tamucc.edu/pens/fiery-ice-2017> (August 1, 2017). Details of the Workshop and a link to online registration are provided on this website.

Important Dates (North America Central Standard Time [CST]):

- August 1, 2017: Fiery Ice 2017 website opens
- August 1, 2017: Online registration begins
- September 1, 2017: Opening date for abstract submission
- October 15, 2017: Last day to submit abstracts
- November 1, 2017: Notification of acceptance of submitted abstracts
- October 20, 2017: Early registration closes
- December 7, 2017: Online registration closes

Registration Fees:

- Early registration (until October 20, 2017): U.S. \$600
- Regular registration (until December 7, 2017): U.S. \$700
- Student registration (until November 15, 2017): U.S. \$300
- Onsite registration: U.S. \$700 (Regular); U.S. \$400 (Student)

The registration fee includes:

- Admission to the workshop on December 6, 7, and 8
- Reception on December 6
- Banquet Dinner on December 7
- Lunch on December 6 and 7
- Breakfast on December 6, 7 and 8
- Morning and afternoon refreshments during the workshop

Please note that registration fee does not include accommodations. Participants are responsible for reserving and paying for their hotel accommodations. Hotel registration will be available August 1, 2017.

Call for Abstracts:

The Call for Abstracts will be emailed and posted on the website by August 1, 2017

Tentative Program Schedule:

Time / Date	December 5 (Tue)	December 6 (Wed)	December 7 (Thu)	December 8 (Fri)
Morning	Pre-workshop event	Registration Opening remarks Plenary lecture 1	Registration Breakout session report 1 National reports	Breakout session report 2 Plenary lecture 2 Closing remarks
Afternoon 1		Oral presentations National reports	Oral presentations National reports	
Afternoon 2		Poster presentations Breakout session 1	Poster presentations Breakout session 2	
Evening		Banquet Dinner – Corpus Christi Aquarium	TAMU-CC Campus Dinner and Cocktails	

Changes in this schedule will occur as speakers are organized.

Pre-Workshop Event:

The pre-workshop event on December 5 will be held at the Omni Hotel and will include registration at a reserved location in the lounge where cocktails can be purchased.

Breakout Sessions:

The topics of the 6 breakout sessions that will be held on December 6 and 7 are being finalized by the International Steering Committee. An announcement of the breakout session topics will be posted on the Workshop website in the near future.

Workshop Venue:

The 11th International Workshop on Methane Hydrate Research and Development will be held at the Omni Hotel in downtown Corpus Christi, Texas.

Accommodations:

Blocks of hotel rooms at the Omni Hotel (<https://www.omnihotels.com/hotels/corpus-christi>) in downtown Corpus Christi at a discounted rate have been reserved for the workshop participants. Please visit the Workshop website and go to the Accommodations section for more information.

Visas:

Detailed information regarding visas is available on the Workshop website. If you are NOT a citizen or permanent resident of the U.S. or its territories, or reside in a U.S. Visa Waiver Program (VWP) designated country, and are planning to apply for a Visitor (B) visa, then please do so as early as possible. Please contact us by email if you have questions or require assistance in obtaining a visa.

International Steering Committee:

Professor Richard Coffin
Texas A&M University Corpus Christi USA

Professor Bjørn Kvamme
University of Bergen NORWAY

Professor Stephen Masutani
University of Hawai‘i USA

Dr. Norio Tenma
National Institute of Advanced Science &
Technology JAPAN

Professor Tsutomu Uchida
Hokkaido University JAPAN

Workshop Secretariat:

Email: Alessandra.Garcia@tamucc.edu

Website: <http://www.tamucc.edu/pens/fiery-ice-2017>

SPONSORS



**USE PROMO CODE - CCGSTRIDE
FOR \$5.00 OFF YOUR FIRST RIDE.**

**DOWNLOAD THE TRIDE
PASSENGER APP TODAY!**

GET IT ON
 **Google Play**

 Download on the
App Store

RIDETRIDE.COM

STALKER ENERGY, L.P.

Austin Office:

1717 W. 6th Street, Ste 230

Austin, Texas 78703

512.457.8711

Contact: Bill Walker, Jr.

bwalker@stalkerenergy.com

Houston Office:

2001 Kirby Drive, Suite 950

Houston, Texas 77019

713.522.2733

Contact: Todd Sinex

tsinex@stalkerenergy.com

www.stalkerenergy.com

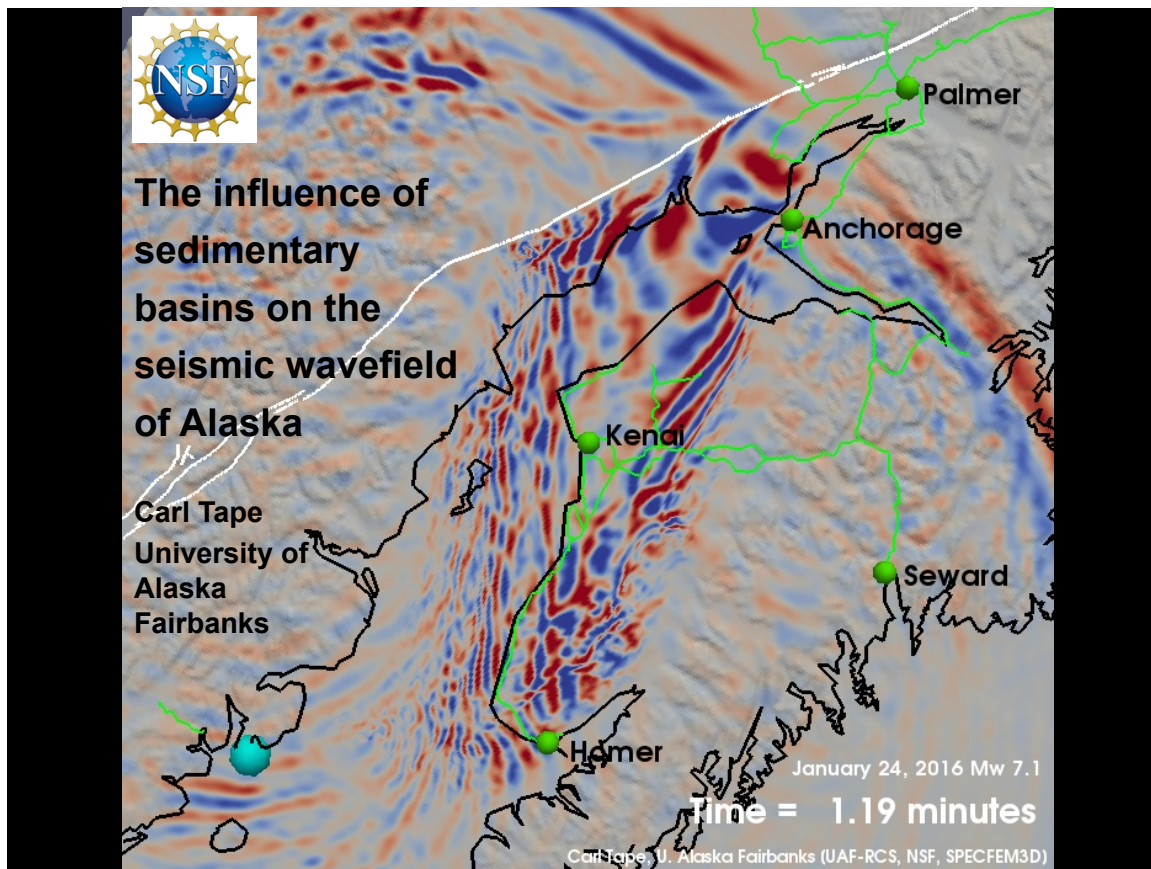


Seismology in Alaska: Earthquakes, Bears and High-performance Computing

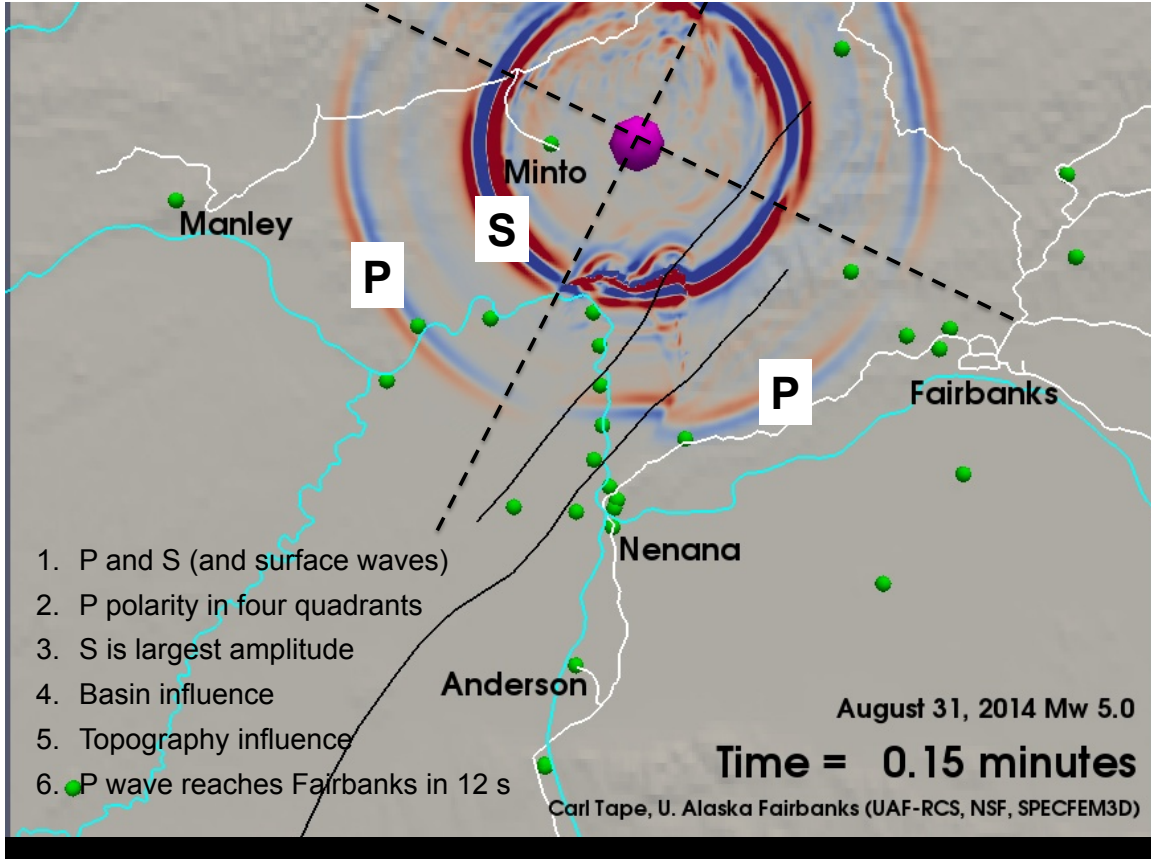
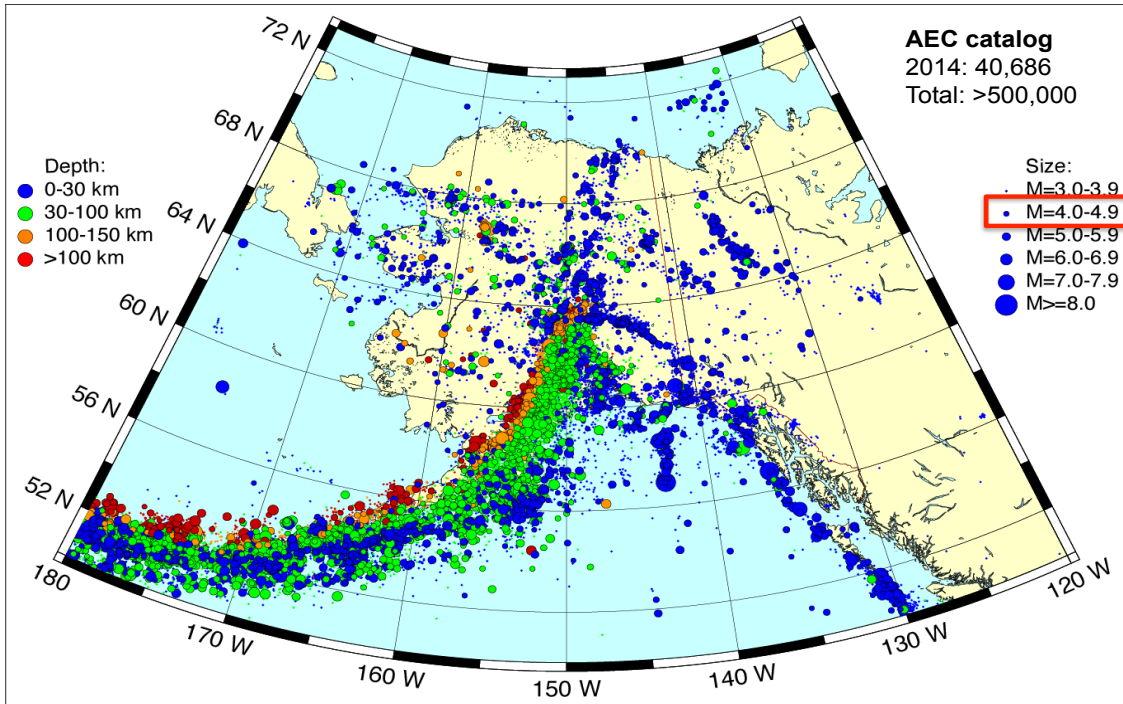
By Dr. Carl Tape

Abstract

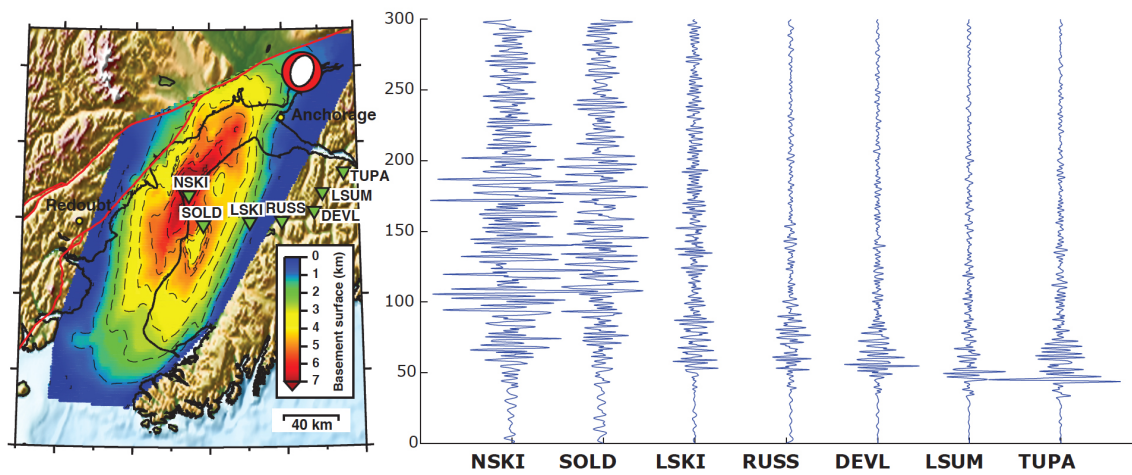
Alaska is one of the world's prolific producers of earthquakes, including the 2002 magnitude 7.9 strike-slip earthquake on the Denali fault and the 1964 magnitude 9.2 subduction earthquake on the Alaskan megathrust. Earthquakes occur throughout the state and are a reminder of the active subduction, collision, and faulting that have shaped the highest mountains in North America. Over the past five years, seismic stations have been deployed in some of Alaska's most inaccessible regions. New seismic data provide opportunities to characterize new fault zones and to image complex subsurface structures, from the underlying Pacific slab to sedimentary basins within the crust. Complex structures produce complex earthquake ground motion that can be modeled using high-performance computational resources. I will discuss new seismic deployments, discoveries, and scientific frontiers in Alaska.



There are earthquakes everywhere in Alaska, including $M > 7$ as far north as 66° latitude.



Amplification and extended shaking in sedimentary basins



Basin geometry: Shellenbaum et al., 2010

Seismic stations: MOOS experiment (Christensen and Abers, 2007-2009)

JOIN!



The Desk & Derrick Club of Corpus Christi is a dynamic organization that promotes the education of the petroleum, energy and allied industries and advances the professional

Member Benefits:

- Learn from energy industry experts.
- Network with energy industry leaders and colleagues.
- Attend regional and national meetings.
- Receive critical updates and information about the energy industry.
- Enhance communication and leadership skills.
- Make friends for life!

For more information about the Desk & Derrick Club of Corpus Christi and to learn about member eligibility, go to www.addc.org or contact Jena Nelson at 361-844-6726 or email at jena@amshore.com

The Desk & Derrick Club of Corpus Christi is a proud affiliate of the Association of Desk And Derrick Clubs, www.addc.org

SPONSORS

GeoSteering LLC
www.GeoSteering.com

info@geosteering.com

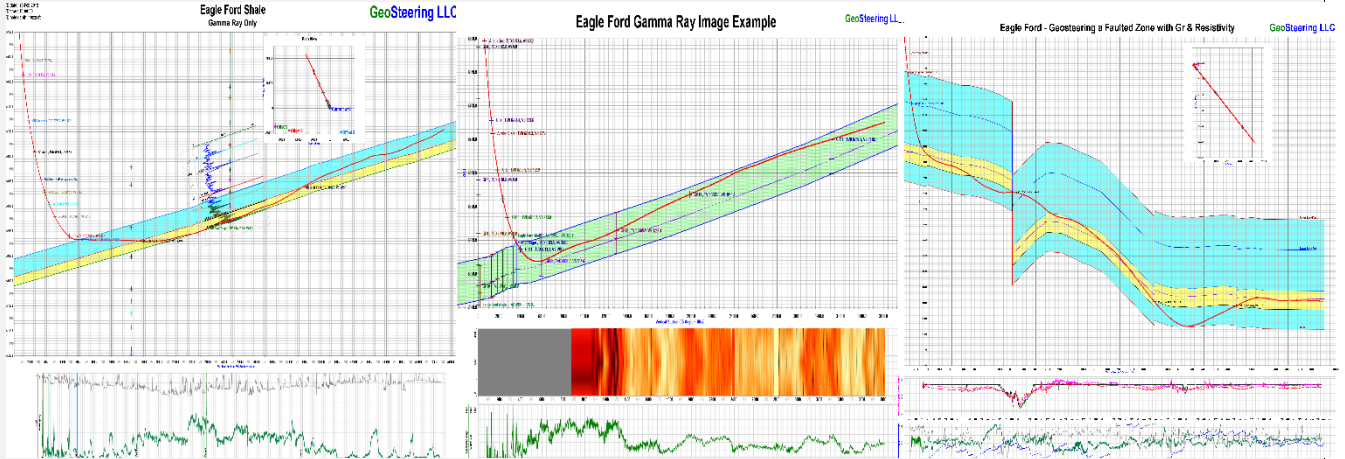
281-573-0500

Geosteering in the USA and Internationally since 2002

Steering with GR

Steering with Images

Steering with Resistivity



Experience in Texas

Austin Chalk, Barnett, Buda, Caddo, Devonian, Eaglebine / Woodbine, Eagle Ford, Georgetown, Granite Wash, Permian (Delaware, Midland), Smithwick



Since 1905

Royal Exploration Company, Inc.

500 N Shoreline Blvd, Suite 807 N
Corpus Christi, Texas 78401-0336

Alan Costello – Geologist
acostello@royalcctx.com

Matt Hammer – Exploration Manager
mhammer@royalcctx.com

Telephone: 361/888-4792

Fax: 361/888-8190

SPONSORS

CHARGER EXPLORATION

Michael L. Jones
President/Geologist

Onshore Gulf Coast Prospect Generation and Consulting

1001 McKinney Street, Suite 801 Houston, TX 77002
Ofc: 713.654.0080 Cell: 713.398.3091
Email: mjones@chargerexploration.com
www.chargerexploration.com

Serving Corpus Christi for over 20 years

 **mail express**
501 S. Tanchua St.
Corpus Christi, TX 78401

- We process 1st class mail with a direct discount to you
- No meter procedure change except for the amount you meter your envelopes

CALL 888-4332 for details - Ask for Anne

That old gas kick could be your next discovery!

Characterization of Unconventional Reservoirs

Traditional methods of core analysis cannot yield acceptable results when applied to unconventional reservoirs such as gas shales, tight gas sands, coals and thin bed formations.

Production controls on these reservoirs are not limited to hydrocarbons in place, permeability and porosity. Pay identification requires an understanding of complex lithologies and exotic mineralogies.

Only Core Lab offers the comprehensive range of unique technologies required to optimize your unconventional reservoirs.

Geological Petrophysical Geomechanical Geochemical



To learn more about our unique unconventional reservoir evaluation services contact Core Lab.
(713) 328-2121 or (361) 289-5457 psinfo@corelab.com

© 2005 Core Laboratories. All rights reserved.



CONGRESSMAN
SOLOMON P.
ORTIZ
INTERNATIONAL
CENTER



THE ORTIZ CENTER

The Ortiz Center, managed by Spectra, is a unique venue that hosts a wide variety of events. From weddings and private parties, to business meetings, trade shows and fundraisers, we can accommodate it all. Our on-site full service catering offers a variety of menu options, sure to impress you and your guests.



GREAT FOR

- Meetings
- Trainings + Seminars
- Tradeshows + Job Fairs
- Fundraisers
- Luncheons
- Galas
- Weddings
- Quinceaneras
- Holiday Parties
- Corporate Events

Webex and teleconferencing services now available.



The Ortiz Center - www.ortizcenter.com ■ 361-879-0125 ■ Corpus Christi, TX

PROFESSIONALLY MANAGED BY



SPONSORS

SEI®

YOUR
Full Service
National
Seismic Data
Marketing Firm

Seismic Exchange, Inc.

Strategic Speculative Surveys
Geophysical Data Marketing & Management

Corpus Marketing Contact
Lana Lipinski
llipinski@seismicexchange.com

DALLAS DENVER HOUSTON NEW ORLEANS TULSA
4805 Westway Park Blvd., Houston, Texas 77041 832.590.5100

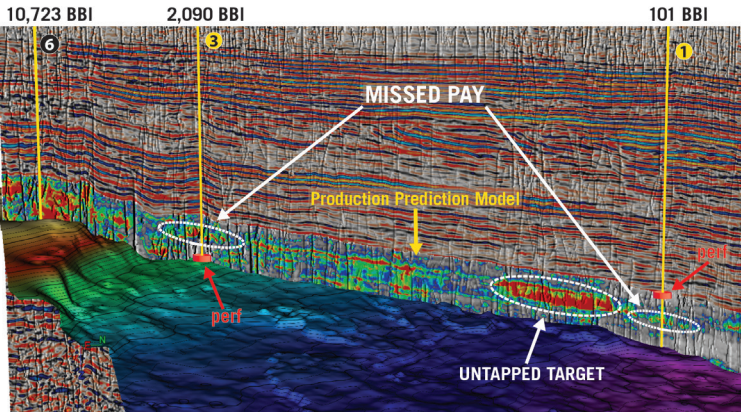
www.seismicexchange.com



VirTex Operating Company, Inc.

615 North Upper Broadway, Suite 525, Corpus Christi, Texas 78477
(361) 882-3046

SEISMIC-BASED ANALYTICS



An arbitrary line through 3 vertical wells in the West Texas Permian Basin shows the lateral variations of the Production Prediction Model and reveals refrac potential for Wells 1 and 3 where the red disks indicate the actual completion intervals and the white circles highlight the missed pay. Note the untapped target near Well 1.

In today's challenging market, no one can afford a bad well. Global's seismic-based analytics can help you avoid the pitfalls and pinpoint the sweet spots. By integrating seismic, geological, and engineering data, this proprietary workflow identifies the most prospective areas and zones for drilling - down to the stage level! This reduces risk, optimizes spend, and greatly increases the chance for every well and stage to be a winner.

- High-grade prospective drilling areas and zones
- Enhance well planning and geosteering
- Optimize completion placements and frac design
- Predict well performance at stage level
- Boost EUR of individual wells
- Identify candidates for refrac

Global's **SEISMIC-BASED ANALYTICS** approach is field-proven with successful projects in both conventional and unconventional reservoirs. Contact us today to find out how Global can help you make every well a winner.

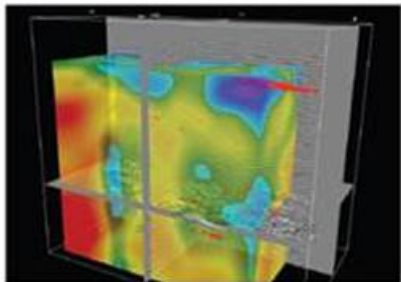
FIND WHAT YOU'VE BEEN MISSING

For More Information:
www.globalgeophysical.com/ANALYTICS or
Contact ANALYTICS@globalgeophysical.com



SEIMAXSM
TECHNOLOGIES

Innovative Seismic
Processing Solutions



**2D and 3D Land and Marine
Pre-Stack Time and Depth Imaging**

**Pre- and Post-Stack Attributes
for Amplitude, Frequency and
Resolution**

4805 Westway Park Blvd. Houston, TX 77041
p: 832.554.4301 www.seimaxtech.com



SABALO ENERGY

SABALO ENERGY | P.O. BOX 2907 | CORPUS CHRISTI, TX 78403 | 361.888.7708 | SABALOENERGY.COM

sponsors



Winn Exploration Co., Inc.

Actively Seeking High Quality
Drilling Prospects

Contacts:

Mike Layman (Geophysicist)	361-844-6922
Tom Winn (Geologist)	361-844-6992
Southern Winn (Geologist)	361-844-6998

800 North Shoreline Blvd.
19th Floor, North Tower
Corpus Christi, Texas 78401

Office: 361-844-6900 Fax: 361-844-6901

SUEMAUR

Experience. Expertise. Exploration.

EXPLORING SINCE 1968



539 N Carancahua St, Suite 1100, Corpus Christi, TX 78401

(361) 884-8824

www.suemaaur.com

Corpus Christi Geological Society Papers available for purchase at the Texas Bureau of Economic Geology

Note: Publication codes are hyperlinked to their online listing in [The Bureau Store](http://begstore.beg.utexas.edu/store/) (<http://begstore.beg.utexas.edu/store/>).

Cretaceous-Wilcox-Frio Symposia, D. B. Clutterbuck, Editor, 41 p., 1962.
[CCGS 002S](#) \$15.00

Type Logs of South Texas Fields, Vol. I, Frio Trend. Compiled by Don Kling. Includes 134 fields. 158 p., 1972. Ring binder.
[CCGS 015TL](#) \$25.00

Type Logs of South Texas Fields, Vol. II, Wilcox (Eocene) Trend. Compiled by M. A. Wolbrink. 98 p., 1979. Ring binder.
[CCGS 016TL](#) \$25.00

Field Trip Guidebooks

South Texas Uranium. J. L. Cowdrey, Editor. 62 p., 1968.
[CCGS 102G](#) \$12.00

Hidalgo Canyon and La Popa Valley, Nuevo Leon, Mexico. CCGS 1970 Spring Field Conference. 78 p., 1970.
[CCGS 103G](#) \$8.00

Padre Island National Seashore Field Guide. R. N. Tench and W. D. Hodgson, Editors. 61 p., 1972.
[CCGS 104G](#) \$5.00

Triple Energy Field Trip, Uranium, Coal, Gas—Duval, Webb & Zapata Counties, Texas. George Faga, Editor. 24 p., 1975.
[CCGS 105G](#) \$10.00

Minas de Golondrinas and Minas Rancherías, Mexico. Robert Manson and Barbara Beynon, Editors. 48 p. plus illus., 1978.
[CCGS 106G](#) \$15.00

Portrero Garcia and Huasteca Canyon, Northeastern Mexico. Barbara Beynon and J. L. Russell, Editors. 46 p., 1979.
[CCGS 107G](#) \$15.00

Modern Depositional Environments of Sands in South Texas. C. E. Stelling and J. L. Russell, Editors. 64 p., 1981.
[CCGS 108G](#) \$15.00

Geology of Peregrina & Novillo Canyons, Ciudad Victoria, Mexico, J. L. Russell, Ed., 23 p. plus geologic map and cross section, 1981.
[CCGS 109G](#) \$10.00

Geology of the Llano Uplift, Central Texas, and Geological Features in the Uvalde Area. Corpus Christi Geological Society Annual Spring Field Conference, May 7-9, 1982. Various paginated. 115 p., 53 p.
[CCGS 110G](#) \$15.00

Structure and Mesozoic Stratigraphy of Northeast Mexico, prepared by numerous authors, variously paginated. 76 p., 38 p., 1984.
[CCGS 111G](#) \$15.00

Geology of the Big Bend National Park, Texas, by C. A. Berkebille. 26 p., 1984.
[CCGS 112G](#) \$12.00

GEO LINK POST

<http://www.lib.utexas.edu/books/landsapes/index.php> Free service. Rare, fragile, hard-to-find, public domain documents covering various topics about the landscape of Texas. Includes the Texas Geological Survey from 1887 until 1894.

USGS TAPESTRY OF TIME AND TERRAIN <http://tapestry.usgs.gov> The CCGS is donating to all of the 5th and 6th grade schools in the Coastal Bend. Check it out--it is a spectacular map. You might want to frame one for your own office. The one in my office has glass and a metal frame, and It cost \$400 and it does not look as good as the ones we are giving to the schools.

FREE TEXAS TOPOS'S <http://www.tnris.state.tx.us/digital.htm> these are TIFF files from your state government that can be downloaded and printed. You can ad them to SMT by converting them first in Globalmapper. Other digital data as well.

FREE NATIONAL TOPO'S [http://store.usgs.gov/b2c_usgs/b2c/start/\(xcm=r3standardpitrex_prd\)/.do](http://store.usgs.gov/b2c_usgs/b2c/start/(xcm=r3standardpitrex_prd)/.do) go to this webpage and look on the extreme right side to the box titled TOPO MAPS DOWNLOAD TOPO MAPS FREE.

<http://www.geographynetwork.com/> Go here and try their top 5 map services. My favorite is 'USGS Elevation Date.' Zoom in on your favorite places and see great shaded relief images. One of my favorites is the Great Sand Dunes National Park in south central Colorado. Nice Dunes.

<http://antwrp.gsfc.nasa.gov/apod/asropix.html> Astronomy picture of the day--awesome. I click this page everyday.

<http://www.spacimaging.com/gallery/ioweek/iow.htm> Amazing satellite images. Check out the gallery.

<http://www.ngdc.noaa.gov/seg/topo/globegal.shtml> More great maps to share with kids and students.

www.ccgeo.org Don't forget we have our own we page.

<http://terra.nasa.gov/gallery/> Great satellite images of Earth.

www.ermaper.com They have a great free downloadable viewer for TIFF and other graphic files called ER Viewer.

<http://terrasrver.com> Go here to download free aerial photo images that can be plotted under your digital land and well data. Images down to 1 meter resolution, searchable by Lat Long coordinate. Useful for resolving well location questions.

TYPE LOGS OF SOUTH TEXAS FIELDS by Corpus Christi Geological Society

NEW (2009-2010)TYPE LOGS IN RED; ***2011;**

lost now found

ARANSAS COUNTY

Aransas Pass/McCampbell Deep
Bartell Pass
Blackjack
Burgentine Lake
Copano Bay, South
Estes Cove
Fulton Beach
Goose Island
Half Moon Reef
Nine Mile Point
Rockport, West
St. Charles
Tally Island
Tract 831-G.O.M. (offshore)
Virginia

BEE COUNTY

Caesar
Mosca
Nomanna
Orangedale(2)
Ray-Wilcox
San Domingo

Tulsita Wilcox

Strauch_Wilcox

BROOKS COUNTY

Ann Mag
Boedecker
Cage Ranch
Encintas
ERF
Gyp Hill
Gyp Hill West
Loma Blanca
Mariposa
Mills Bennett
Pita
Tio Ayola
Tres Encinos

CALHOUN COUNTY

Appling
Coloma Creek, North
Heyser
Lavaca Bay
Long Mott
Magnolia Beach
Mosquito Point
Olivia
Panther Reef
Powderhorn
Seadrift, N.W.
Steamboat Pass
Webb Point
S.E. Zoller

CAMERON COUNTY

Holly Beach
Luttes
San Martin (2)
Three Islands, East

Vista Del Mar

COLORADO COUNTY

E. Ramsey
Graceland N. Fault Bik
Graceland S. Fault Bik

DEWITT COUNTY

Anna Barre
Cook
*******Nordheim**
Smith Creek
Warmsey

Yorktown, South

DUVAL COUNTY

DCR-49
Four Seasons
Good Friday
Hagist Ranch
Herbst
Loma Novia
Petrox

Seven Sisters

Seventy Six, South

Starr Bright, West

GOLIAD COUNTY

Berclair
North Blanca
Bombs
Boyce
Cabeza Creek, South
Goliad, West

St Armo

Terrell Point

HIDALGO COUNTY

Alamo/Donna
Donna
Edinburg, West
Flores-Jeffress

Foy

Hidalgo

LA Blanca

McAllen& Pharr

McAllen Ranch

Mercedes

Monte Christo, North

Penitas

San Fordyce

San Carlos

San Salvador

S. Santallana

Shary

Tabasco

Weslaco, North

Weslaco, South

JACKSON COUNTY

Carancahua Creek
Francitas
Ganado & Ganado Deep
LaWard, North
Little Kentucky

Maurbro

StewartSwan Lake

Swan Lake, East

Texana, North

West Ranch

JIM HOGG COUNTY

Chaparosa

Thompsonville,N.E.

JIM WELLS COUNTY

Freebom

Hoelsher

Palito Blanco

Wade City

KARNES COUNTY

Burnell

Coy City

Person

Runge

KENEDY COUNTY

Candelaria

Julian

Julian, North

Laguna Madre

Rita

Stillman

KLEBERG COUNTY

Alazan

Alazan, North

Big Caesar

Borregos

Chevron (offshore)

Laguna Larga

Seeligson

Sprint (offshore)

LA SALLE COUNTY

*****Pearsall**

LAVACA COUNTY

Hallettsville

Hope

Southwest Speaks

Southwest Speaks Deep

LIVE OAK COUNTY

Atkinson

Braslau

Chapa

Clayton

Dunn

Harris

Houdman

Kittie West-Salt Creek

Lucille

Sierra Vista

Tom Lyne

White Creek

White Creek, East

MATAGORDA COUNTY

Collegeport

MCMULLEN COUNTY

Arnold-Weldon

Brazil

Devil's Waterhole

Hostetter

Hostetter, North

NUECES COUNTY

Agua Dulce (3)

Arnold-David

Arnold-David, North

Baldwin Deep

Calallen

Chapman Ranch

Corpus Christi, N.W.

Corpus Christi West C.C.

Encinal Channel

Flour Bluff/Flour Bluff, East

GOM St 9045(offshore)

Indian Point

Mustang Island

Mustang Island, West

Mustang Island St.

889S(offshore)

Nueces Bay/Nueces Bay

West

Perro Rojo

Pita Island

Ramada

Redfish Bay

Riverside

Riverside, South

Saxet

Shield

Stedman Island

Turkey Creek

REFUGIO COUNTY

Bonnieview/Packery Flats

Greta

La Rosa

Lake Pasture

Refugio, New

Tom O'Connor

SAN PATRICIO COUNTY

Angelita East

Commonwealth

Encino

Enos Cooper

Geronimo

Harvey

Hiberia

Hodges

Mathis, East

McCampbell Deep/Aransas Pass

Midway

Midway, North

Odem

Plymouth

Portilla (2)

Taft

Taft, East

White Point, East

STARR COUNTY

El Tanque

Garcia

Hinde

La Reforma, S.W.

Lyda

Ricaby

Rincon

Rincon, North

Ross

San Roman

Sun

Yturria

VICTORIA COUNTY

Helen Gohike, S.W.

Keeran, North

Marcado Creek

McFaddin

Meyersville

Placedo

WEBB COUNTY

Aquilares/Glen Martin

Big Cowboy

Bruni, S.E.

Cabezon

Carr Lobo

Davis

Hirsch

Juanita

Las Tiendas

Nicholson

O'Hem

Olmitos

Tom Walsh

WHARTON COUNTY

Black Owl

WILLACY COUNTY

Chile Vieja

La Sal Vieja

Paso Real

Tenerias

Willamar

ZAPATA COUNTY

Benavides

Davis, South

Jennings/Jennings, West

Lopeno

M&F

Pok-A-Dot

ZAVALA COUNTY

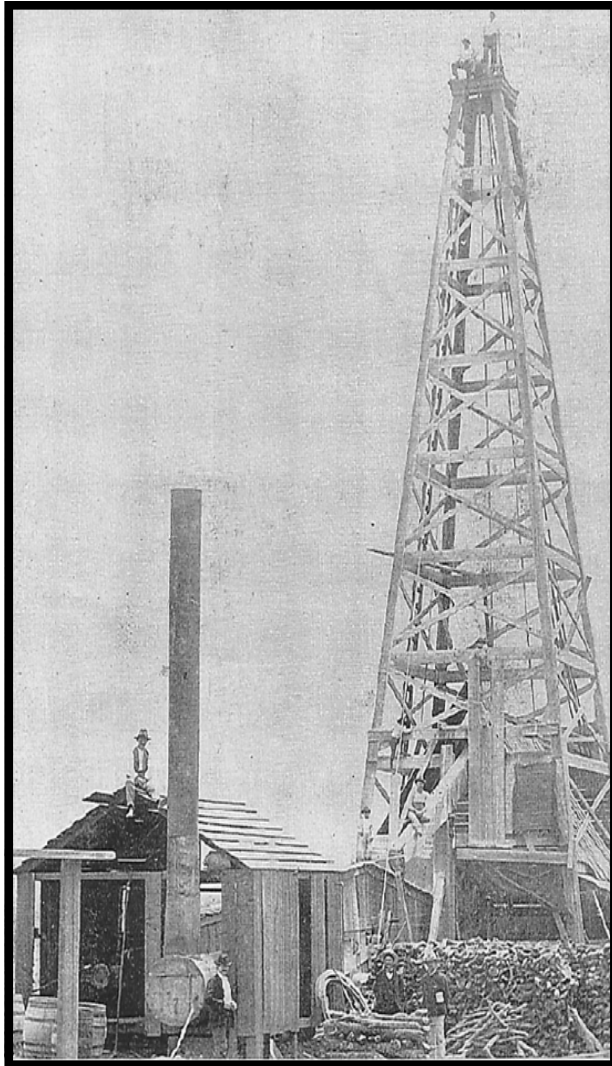
El Bano

Call Coastal Bend Geological Library, Maxine: 361-883-2736
1 log -- \$10 each, 5-10 logs \$9 each and 10 + logs \$8.00 each – plus postage. & paper

OIL MEN
TALES FROM THE SOUTH TEXAS OIL PATCH
DVD
MEMBER PRICE \$25
NON-MEMBER \$30



To Order DVD
Sebastian Wiedmann
swiedmann.geo@gmail.com
If mailed add \$5.00



Corpus Christi Geological Society
C/O Javelina Press
P. O. Box 60181
Corpus Christi, TX 78466

Order Form

Mail order form for Wooden rigs-Iron Men. The price is \$75 per copy, which includes sales tax, handling, and postage

Name _____

Address _____

City, State, Zip _____

No. of books _____ Amount enclosed _____

Send to Corpus Christi Geological Society Book Orders

P. O. Box 60181

Corpus Christi, TX. 78466 Tax exempt# if applicable _____

Wooden Rigs—Iron Men

The Story of Oil & Gas in South
Texas

By Bill & Marjorie K. Walraven

Published by the
Corpus Christi Geological Society

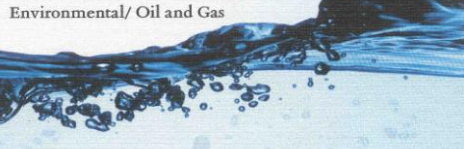
TOG Exploration LLC

David Becker
Geologist
600 Leopard St. Ste 706
Corpus Christi, TX 78401

dkbecker1137@sbcglobal.net

361-884-3613

Barbara E. Beynon, P.G.
Consultant

Environmental/ Oil and Gas


(361) 774-3369 Bbeynon77@yahoo.com



Dawn S. Bissell
Geoscientist

Advent Geoscience Consulting, LLC
Corpus Christi, TX 78411

Phone: 361-960-2151
Email: bissells@swbell.net

MUD LOGGING SERVICE



Since 1961

MIKE BULLARD

(361) 221-9717 Office (361) 211-9715 Fax
(361)522-1245 Cell P.O. Box 1011
E-Mail md_bullard@sbcglobal.net Kingsville, Tx 78363



flamingo
SEISMIC SOLUTIONS

Elizabeth Chapman
Business development/marketing

11777 Katy Freeway, Ste 570 Houston, TX 77079
office: 281.977.7432 ext 109 | fax: 281.829.1788
cell: 713.817.4232 email: elizabeth@flamingoseismic.com

www.flamingoseismic.com

James L. Claughton
CONSULTING GEOLOGIST

Office | 361-887-2991 615 North Upper Broadway
Fax | 361-883-4790 Suite 1935
Cell | 361-960-2014 Corpus Christi, Texas
clausoie@sbcglobal.net 78401-0779

Jim Collins
Geoscientist



361.537.4034
jim@gulfcoastgas.com

Imagine Resources, LLC

Frank G Cornish
President/Consulting Geologist

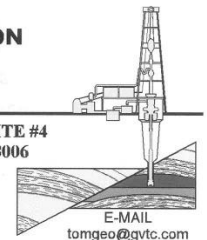
5103 Turnabout Lane
Austin, Tx 78731

361-563-9184
frank.cornish@gmail.com

TOM DAVIDSON
GEOLOGIST

28550 IH-10 WEST SUITE #4
BOERNE, TEXAS 78006

BUS: (210) 844-8963
RES: (830) 981-5883
FAX: (830) 981-5567
CEL: (210) 844-8963



E-MAIL
tomgeo@gvfc.com

SEIMAX
TECHNOLOGIES

Sara Davis
Director of Marketing & Business Development

4805 Westway Park Blvd., Houston, TX 77041
p: 832.554.4301 d: 832.554.4314 c: 713.256.8737
sdavis@seimaxtech.com

Geotech
Logging Services, LLC

Brian Desaulnier
Owner / President
512.923.2059
brian@gtls.us

P.O. Box 305 Office: 512.308.8200
Red Rock, TX 78662 Fax: 830.839.4832
www.geotechloggingservices.com

Leighton L. Devine
Exploration Geologist

SUEMAUR

Experience. Expertise. Exploration.

p. 361-884-8824 x1103
c. 361-510-8872
ldevine@suemaur.com

Suemaur Exploration & Production, LLC
539 North Carancahua, Suite 1100
Corpus Christi, TX 78401

Tommy Dubois
Geologist

2627 CR 312
Yoakum, Texas 77995

361-215-0223 tvdubois@yahoo.com



FRONTERA EXPLORATION CONSULTANTS

Geological and Geophysical Interpretation
SMT Kingdom™ Workstation

THOMAS E. EWING, PH.D.
AAPG CPG #4538; Texas Lic. Geol. #1320

19240 Redland Road, Suite 250, San Antonio, TX 78259
(210) 494-4526; (210) 824-6423 FAX
tewing@fronteraexploration.com

Since 1982

FOX ENVIRONMENTAL SERVICES, LLC

PLANNING | PERMITTING | REAL ESTATE MARKETING MAPS

LAURA M. FOX
LAURA@FOXENVIRONMENTALSERVICES.COM

P.O. Box 745
ROCKPORT, TEXAS 78381
361.319.3119



MATTHEW FRANEY
Consulting Geologist

AAPG Certified Petroleum Geologist #6342
Texas Licensed Professional Geologist #1169

FRANEY OIL OPERATIONS, INC.
600 Leopard Street, Suite 904 361-563-6327
Corpus Christi, TX 78401 mfraney57@att.net

Enrique (Rick) Garza
Operation Supervisor
US Land



Geoscience
Solutions

Rick.Garza@GlobalGeophysical.com
DIRECT +1 713-808-7428
WORK +1 361-701-6480
FAX +1 713-808-7928
13927 South Gessner Road
Missouri City, Texas 77489 USA
www.GlobalGeophysical.com

GISLER BROTHERS LOGGING CO., INC.

P.O. BOX 485
106 E. MAIN

RUNGE, TX 78151



Wes Gisler
Bus. (830) 239-4651
Mobile (361) 676-1369

wes@gislerbrotherslogging.com

YOUR CARD COULD BE HERE!!!

\$30 FOR 10 ISSUES AD. PRICES PRO-RATED. EMAIL ROBBY AT ROBERT.STERETT@GMAIL.COM.



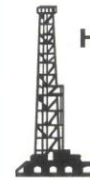
RAY GOVETT, Ph. D.
CONSULTING GEOLOGIST
 361-855-0134

Robert Graham
 President
 grexploration@gmail.com
 Phone 361-882-7681
 Fax 361-882-7685
 Cell 361-774-3635



Exploratory Prospects & Production Development

Mail:
 P. O. Box 1843
 Corpus Christi, Texas
 78403-1843
Office:
 606 N. Carancahua, Ste. 610
 Corpus Christi, Texas
 78401-0634



HART EXPLORATION, LLC.

RICK HART
 Geologist / Owner

P.O. Box 3576
 Bandera, Texas 78003
 Cell: 512-626-3053
 Email: hartexploration@aol.com

RIVIERA EXPLORATION, LLC

H. TONY HAUGLUM
President

600 LEOPARD ST.
 SUITE 1704
 CORPUS CHRISTI
 TEXAS 78401
 PHONE 361.884.1811
 FAX 361.884.8071
 E-MAIL THAUGLUM@SWBELLSNET

Chuck Henry
Vice President, Geosciences



T 713.623.7139 M 713.501.9575
 chenhry@frostwoodenergy.com
 frostwoodenergy.com

6022 Katy Freeway, Suite 100
 Houston, TX 77024
Moving offices on Aug 15th

Brent F. Hopkins
President and Chief Executive Officer

SUEMAUR
 Experience. Expertise. Exploration.

p. 361-884-8824 x1101
 c. 361-215-4855
 bhopkins@suemaur.com
 Suemaur Exploration & Production, LLC
 539 North Carancahua, Suite 1100
 Corpus Christi, TX 78401

James R. Jones
 Geologist

7434 Long S Drive
Corpus Christi, TX 78414
361-779-0537
jrjones5426@aol.com



EOG Resources, Inc.
 539 N. Carancahua
 Suite 900
 Corpus Christi, TX 78401-0908
 Direct: (361) 887-2681

Randy Lambert
 Geological Advisor

Fax: (361) 844-1546
 randy_lambert@eogresources.com

CURTIS R. MAYO
 GEOLOGICAL CONSULTANT

Reserve Analysis **Prospect Evaluation**
Expert Witness **Prospect Generation**

Fredericksburg, Texas 78624
 Office: 830.992.2938 Cell: 830.765.0628 E-Mail: cmayo@ccresc.net



PATRICK J. McCULLOUGH [President]
 patrickm@emeraldbayexp.com

311 Saratoga Boulevard Corpus Christi, Texas 78417
 361.852.6195 [o] 361.852.6676 [f] 361.876.7881 [c]



Armando Medina
 Owner / Geologist

8610 N. New Braunfels #703 • San Antonio, TX 78217
 (210) 538-2170 • amedina@valorexploration.com



J. Mark Miller
 President

Phone (361) 883-7700
 Fax (361) 883-7701
 mark@millersmithgas.com
 545 N. Upper Broadway
 Suite 400
 Corpus Christi, Texas 78476

Wellhead Gas Marketing



Mark Mixon
 Account Manager

mmixon@lmkr.com
 P: +1 281 485 8657
 D: +1 281 848 3310
 C: +1 713 418 8918
 F: +1 281 879 0135

LMK Resources Inc.
 6821 North Course Drive, Suite 300,
 Houston, TX 77072, USA

Mailing Address
 615 Leopard, Ste. 640
 Corpus Christi, Texas 78401-0641
 361.882.7888 phone
 361.882.7889 fax
 361.946.2581 mobile

Contact Address
 1701 Southwest Parkway, Ste. 109
 College Station, Texas 77840
 866.946.2581 phone
 866.946.2580 fax

pmueller@muelrexp.com
 www.muelrexp.com



J. Paul Mueller, Jr.
 President



Daniel J. Neuberger
 Geologist and President

Austin Office:
 712 Windsong Trail
 West Lake Hills, Texas 78746

Office (361) 548-7723
 Home (512) 306-1223
 dan@neuoilandgas.com

Patrick Nye
 President
 patrick@nyexp.us

Office: (361) 452-1455
 Cell: (361) 658-1089
 Res: (361) 238-2146

NYE
 Exploration & Production, LLC

802 N. Carancahua, Suite 1840
 Frost Bank Plaza
 Corpus Christi, TX 78401
 www.nyexp.us



Ken Orlaska
 Account Manager

281-497-8440
 Direct: 281-249-5051
 Fax: 281-558-8096
 Cell: 832-455-1818
 e-mail: korlaska@geotrace.com
 12141 Wickchester Lane, Suite 200
 Houston, Texas 77079
 www.geotrace.com



Herradura
 Petroleum, Inc.

JEFF OSBORN
 Geologist

711 N. Carancahua, Ste. 1750
 Corpus Christi, Texas 78475
 e-mail: jeff@herradurapetroleum.com

Office: 361-884-6886
 Fax: 361-884-9102
 Cell: 361-537-2349

YOUR CARD COULD BE HERE!!!
\$30 FOR 10 ISSUES AD. PRICES PRO-RATED. EMAIL ROBBY AT ROBERT.STERETT@GMAIL.COM.



RICHARD E. PAIGE
CHIEF PROJECT GEOLOGIST

539 N. CARANCAHUA, SUITE 1100
CORPUS CHRISTI, TEXAS 78401-0999

OFF: (361) 884-8824 (ext. 1121)
CELL: (361) 563-1517
HOME: (361) 887-1912
rpaige@suemaur.com

Richard M. Parker
Consulting Geologist
Adjunct Professor – Geosciences
Texas A&M University - Kingsville
Registered State of Texas Board of Professional Geoscientists
License # 6056

12802 Max Rd.
Brookside Village, Texas 77581
Email: rparkstar@sbcglobal.net
Email: Richard.Parker@tamuk.edu

713-724-4380 Cell 1
713-206-3158 Cell 2
281-412-0745 Home
361-593-4072 A&M

Lee Prejean
Business Development Manager



800.256.1147
225.247.9038
www.stratagraph.com
lprejean@stratagraph.com

P.O. Box 53848
Lafayette, LA 70505

STRATAGRAPH
Accurate Data, Reliable Solutions



VirTex Operating Co., Inc.

615 North Upper Broadway
Suite 525, WF168
Corpus Christi, Texas 78401
Bus (361) 882-3046
Fax (361) 882-7427

Mobile: (361)443-5593 • E-mail: bpriday@virtexoperating.com

Beth Priday
Geologist

Minerals Exploration and Mining
Uranium In Situ Leach

Richard M. Rathbun, Jr.
Certified Professional Geologist 9544 / AIPG

921 Barracuda Pl.
Corpus Christi, Texas 78411

(361) 903-8207
rathbunassoc@msn.com



Barry J. Rava
President

Mobile: 281-235-7507
Office: 713-621-7282

barry@icarusog.com
www.icarusog.com

P.O. Box 820253
Houston, TX 77282-0253
Deliveries
1710 S. Dairy Ashford Rd., Ste. 202
Houston, TX 77077

First Rock, Inc.

RGR Production

First Rock I, LLC

Gregg Robertson

600 Leopard St., Suite 1800
Corpus Christi, TX 78401
361-884-0791

Email
fristrockinc@msn.com
Cell
210-260-0300



Weatherford

Wireline Services

Weatherford International Ltd.
401 E. Sonterra Blvd., Suite 1
San Antonio, Texas 78258
USA

Sam Roach
US Guld Coast Wireline Sales

+1.210.930.7588 Direct
+1.210.930.7610 Fax
+1.210.241.2463 Mobile

sam.roach@weatherford.com
www.weatherford.com



Alvin Rowbatham
Sales, Gulf of Mexico

Main +1 713 789 7250
Direct +1 281 781 1065
Fax +1 713 789 7201
Mobile +1 832 372 2366
alvin.rowbatham@iongeo.com

2105 CityWest Blvd. | Suite 900
Houston, TX 77042-2839 USA



Doug Sartoris

Exploration Geologist / Managing Partner

800 North Shoreline Blvd.
Suite 2570 South
Corpus Christi, TX 78401

Office: 361-884-1130
Cell: 361-548-1130
doug@dsxenergy.com

TOM SELMAN
selmanlog.com
tselman@selmanlog.com

Ofc. (432) 563-0084
(800) 578-1006
Cell (432) 288-2259

SELMAN
AND ASSOCIATES, LTD.

GEOLOGICAL CONSULTING / SURFACE LOGGING SERVICES

P.O. Box 61150
Midland, TX 79711

4833 Saratoga #624
Corpus Christi, TX 78413

P.O. Box 2993
Rock Springs, WY 82902



Petrophysics, Inc.
Velocity Surveys • Synthetics • Sonic Log Data

P.O. Box 863323
Plano, Texas 75086

713.560.9733
jsmith@petrophysics.com
www.petrophysics.com

Joe H. Smith
President

Crossroads Exploration

Gloria D. Sprague
Geologist

189 North First Street, Suite 111
Timpson, Texas 75975

Office: 936-254-3600
Mobile: 936-488-9428

gsprague4532@att.net

Charles A. Sternbach, Ph.D.
President

Star Creek Energy Company
Oil and Gas Exploration

800 Wilcrest Drive, Suite 230
Houston, Texas 77042
office: 281.679.7333
cell: 832.567.7333
carbodge@gmail.com



www.starcreekenergy.com

THOMAS W. SWINBANK
CERTIFIED PETROLEUM GEOLOGIST
PRESIDENT

STRIKE OIL & MINERALS CORP.
P.O. BOX 1339
GEORGETOWN, TEXAS 78627

PHONE/FAX 512-863-7519
HOME 512-863-7903
CELL 512-876-9585

Dennis A. Taylor
President and Chief Geologist
dennis@amshore.com

Off: (361) 888-4496
Fax: (361) 888-4588
Direct Line: (361) 844-6728
Cell: (972) 672-9916



AMERICAN SHORELINE, INC.

AMSHORE US WIND, LLC

802 N. Carancahua Street, Suite 1250
Corpus Christi, Texas 78401-0019

www.amshore.com

Environmental

Exploration & Production

JEANIE TIMMERMANN

GEOSCIENTIST

TX LICENSE #2289

7214 Everhart #9
Corpus Christi, TX 78413

(361) 991-7451

jtimmermann74@msn.com

YOUR CARD COULD BE HERE!!!

\$30 FOR 10 ISSUES AD. PRICES PRO-RATED. EMAIL ROBBY AT ROBERT.STERETT@GMAIL.COM.



**Davis
Petroleum
Corp.**

www.davispetroleumcorp.com

Jim Travillo
Senior Geoscientist

1330 Post Oak Boulevard
Suite 600
Houston, Texas 77056

Direct: 713.439.6773
Main: 713.626.7766
Fax: 713.626.7775
Cell: 713.823.9332

jtravillo@davcos.com



WILLIAM A. WALKER, JR.
Certified Petroleum Geologist
bwalker@stalkerenergy.com

1717 WEST 6th STREET, STE. 230 • AUSTIN, TX 78703
2001 KIRBY DR., STE. 950 • HOUSTON, TX 77019

AUSTIN

512.457.8711
cell: 512.217.5192
fax: 512.457.8717

HOUSTON

713.522.2733
cell: 512.217.5192
fax: 713.522.2879

SEBASTIAN P. WIEDMANN
GEOSCIENTIST

4425 DRIFTWOOD PLACE
CORPUS CHRISTI, TEXAS 78411

MOBILE (361) 946-4430
swiedmann.geo@gmail.com



Dave Willis
Onshore Sales

Main +1 713 789 7250
Direct +1 281 781 1035
Mobile +1 281 543 6189
Fax +1 713 789 7201
dave.willis@iongeo.com

2105 CityWest Blvd. | Suite 900
Houston, TX 77042-2839 USA

ROLF WOODS
Exploration Geologist



500 N. Water St., Ste. 1100S — CORPUS CHRISTI, TX 78401-0236
Work: (361) 883-7464 • Fax: (361) 883-3244 • Cell: (361) 947-9200
e-mail: wrwoods@gmail.com