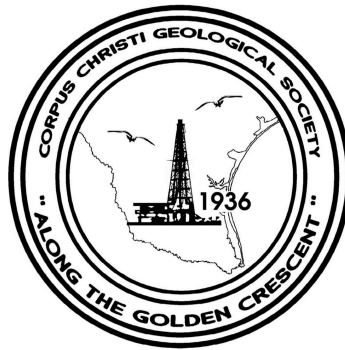


BULLETIN

Corpus Christi Geological Society



and

Coastal Bend Geophysical Society



**May
2018
ISSN 0739 5620**

Compliments of
American Shoreline, Inc.



Specializing in
Oil & Gas Exploration
& Wind Energy

802 N. Carancahua
Frost Bank Plaza, Suite 1250
Corpus Christi, Texas 78401
(361) 888-4496

www.amshore.com



Table of Contents

Officers, Committees and Chairpersons for CCGS/CBGS.....	2&3
CCGS/CBGS Joint Calendar of Meetings & Events.....	4&5
CCGS President’s Letter.....	6&7
9 th Annual Saltwater Fishing Tournament.....	8
CBGS President’s Letter.....	9
Luncheon Meeting Announcement for May.....	13
Real Impacts of Sea Level & Subsidence along the Texas Coast.....	17
CCGS Papers available for purchase at the Bureau of Economic Geology.....	40
Geo Link Post.....	41
Type Logs of South Texas Fields.....	42
Order Oil Men DVD.....	43
Wooden Rigs Iron Men.....	44
Professional Directory.....	45



CORPUS CHRISTI GEOLOGICAL SOCIETY

P.O. BOX 1068* C.C. TX. 78403

2017-2018

www.ccgeo.org

OFFICERS

President	Austin Nye	361-452-1435	austin@nyexp.us
President Elect	Frank Cornish	361-883-0923	frank.cornish@gmail.com
Vice President	William Thompson	361-242-3113	william.thompson@rrc.texas.gov
Secretary	Randy Bissell	361-885-0110	randyb@headingtonenergy.com
Treasurer	Casey Mibb	361-726-1092	clmibb@yahoo.com
Past President	Barbara Beynon	361-774-3369	bbeynon77@yahoo.com
Councilor I	Rick Paige	361-884-8824	rickp@suemaur.com
Councilor II	Brent Hopkins	361-884-8824	brent@suemaur.com

AAPG DELEGATE

EDITORS

Bulletin Editor	Marian Wiedmann	361-855-2542	wiedgulf@gmail.com
Bulletin Tech. Editor	Sebastian Wiedmann	361-946-4430	swiedmann.geo@gmail.com
Web Master	Josh Pollard	361-654-3100	support@interconnect.net

GEOLOGICAL SOCIETY COMMITTEES & CHAIRPERSONS

Advertising/Bus. Cards	Robby Sterett	361-739-5618	robert.sterett@gmail.com
Arrangements	Wes Gisler & Will Graham	830-239-4651 361-885-0110	arrangements@ccgeo.org willg@headingtonenergy.com
Bloodmobile	Mike Lucente	361-883-0923	mikel@impexploration.com
Earth Day	Alan Costello	361-888-4792	acostello@royalcctx.com
Continuing Ed.	Stephen Thomas	361-660-8694	stthomas@spnaturalresources.com
Education	Dawn Bissell	361-960-2151	bissells@swbell.net
Scholarship	J. R. Jones	361-779-0537	jrjones5426@aol.com
Fishing Tournament	Leighton Devine	361-882-8400	ldevine@suemaur.com
History	Ray Govett	361-855-0134	ray30@hotmail.com
Membership	Dorothy Jordan Randy Bissell	361-885-0110 361-885-0113	dorothyj@headington.com randyb@headington.com
Type Logs	Frank Cornish	361-883-0923	frank.cornish@gmail.com
University Liaison	Casey Mibb Wesley Garcia	361-726-1092	clmibb@yahoo.com



COASTAL BEND GEOPHYSICAL SOCIETY
P.O. BOX 2741*C.C. TX. 78403
2017-2018

OFFICERS

President	Dr. Subbarao Yelisetti	361-593-4894	subbarao.yelisetti@tamuk.edu
Vice President	Lonnie Blake	361-883-2831	lonnie_blake@eogresources.com
Secretary/Treasurer	Matt Hammer	361-888-4792	mhammer@royalcctx.com
Golf Chairman	Lonnie Blake	361-883-2831	lonnie_blake@eogresources.com
Scholarship Chairman	Ed Egger	361-947-8400	edegger69@gmail.com
Education	Dr. Robert Schneider	361-593-3589 361-447-2381	Robert.schneider@tamuk.edu

**Visit the geological
web site at
www.ccgeo.org**

CCGS/CBGS JOINT MEETING SCHEDULE 2017-2018

September 2017							October 2017							November 2017						
S	M	T	W	Th	F	S	S	M	T	W	Th	F	S	S	M	T	W	Th	F	S
					1	2	1	2	3	4	5	6	7			1	2	3	4	
3	4	5	6	7	8	9	8	9	10	11	12	13	14	5	6	7	8	9	10	11
10	11	12	13	14	15	16	15	16	17	18	19	20	21	12	13	14	15	16	17	18
17	18	19	20	21	22	23	22	23	24	25	26	27	28	19	20	21	22	23	24	25
24	25	26	27	28	29	30	29	30	31	26	27	28	29	30						

Monday, Oct. 2, 2017 6:00 pm BBQ Kickoff at Hoegemeyers & Presentation by Carl Tape, Ph.D., Associate Professor of Geophysics, Geophysical Institute, University of Alaska Fairbanks “*Seismology in Alaska: Earthquakes, Bears, & High-Performance Computing.*”
 Oct., 18, 2017 11:30am-1:00pm Speaker: David Mittlefehldt, PhD., Planetary scientists, Astromaterials Research & Exploration Science (ARES), Johnson Space Center, National Aeronautics & Space Administration (NASA) “Mars Exploration Rover Opportunity: Exploring the Rim of Endeavour Crater on Mars, Day-4,841+of a 90-Day Mission.”

11:30 am – 1:00 pm
 Speaker: Eugene L. Ames, Jr.
 “The History of Discovery: The Largest Oil Field in the World & Other Musing by a Geologist & Wildcatter.”

December 2017							January 2018							February 2018						
S	M	T	W	Th	F	S	S	M	T	W	Th	F	S	S	M	T	W	Th	F	S
					1	2	1	2	3	4	5	6					1	2	3	
3	4	5	6	7	8	9	7	8	9	10	11	12	13	4	5	6	7	8	9	10
10	11	12	13	14	15	16	14	15	16	17	18	19	20	11	12	13	14	15	16	17
17	18	19	20	21	22	23	21	22	23	24	25	26	27	18	19	20	21	22	23	24
24	25	26	27	28	29	30	28	29	30	31	25	26	27	28						
31																				

Combined
 November/December for the
 Holidays.

11:30 am – 1:00 pm
 Speaker: Lindsay Roe, Core
 Laboratories “South Texas
 Reservoir Geology
 Presentation,” to be
 Determined

11:30 am – 1:00 pm
 Speaker: Peter Wang,
 Geophysical Technical
 Advisor, Paradigm “A New
 Technique of Lithology and
 Fluid Content Prediction from
 Prestack Data: An Application
 to a Carbonate Reservoir”

CCGS/CBGS Joint Meeting Schedule 2017-2018

March 2018							April 2018							May 2018						
S	M	T	W	Th	F	S	S	M	T	W	Th	F	S	S	M	T	W	Th	F	S
				1	2	3	1	2	3	4	5	6	7			1	2	3	4	5
4	5	6	7	8	9	10	8	9	10	11	12	13	14	6	7	8	9	10	11	12
11	12	13	14	15	16	17	15	16	17	18	19	20	21	13	14	15	16	17	18	19
18	19	20	21	22	23	24	22	23	24	25	26	27	28	20	21	22	23	24	25	26
25	26	27	28	29	30	31	29	30						27	28	29	30	31		

11:30 am – 1:00 pm
 Speaker: Collegiate Month!
 Presentations from students & faculty from our local colleges regarding their Geological and Geophysical Research & Educational Programs

11:30 am – 1:00 pm
 Speaker: Phillipe Tissot, Ph.D.,
 Department of Physical & Environmental Sciences, TAMUCC
 “Coastal Processes Presentation,”
 to be determined

11:30 am-1:00 pm
 Speaker: To be determined

Calendar of Meetings and Events

Calendar of Area Monthly Meetings

Corpus Christi Geological/Geophysical Society.....	Third Wed.—11:30a.m.
SIPES Corpus Christi Luncheons.....	Last Tues.—11:30a.m.
South Texas Geological Society Luncheons.....	Second Wed—noon San Antonio
San Antonio Geophysical Society Meetings.....	Fourth Tuesday
Austin Geological Society.....	First Monday
Austin Chapter of SIPES.....	First Thursday
Houston Geological Society Luncheons.....	Last Wednesday
Central Texas Section of Society of Mining, Metallurgy & Exp.....	2 nd Tues every other month in San Antonio



CCGS PRESIDENT'S LETTER

We are closing another year for our Society. I enjoyed serving as President and especially working with the Society board and advisors and other volunteers. I appreciate Randy's acknowledgement in last month's letter of our board and volunteer membership as it is well deserved, but he was way too easy on me! It has been fun and I look forward to being involved as much as possible in the future. I would like to see future board members from both ends of the age gap. The recent graduates and other young professionals are needed on the board for newer perspectives and ideas for activities for our membership. Members who have been on the board are needed again for their experience as well as new ideas to keep things fun and interesting.

Our next luncheon is Wednesday, May 16th at Water Street. Frank Cornish will be delivering his talk about Hydrocarbon Traps Associated with Upper Wilcox Canyons and Seismic Response, MidGulf Coast Texas.

Fermin and BJ reported great times and success of the Golf Tournament and subsequent Pub Crawl. Both certainly should be looked forward to again next year.

Don't forget about the Fishing Tournament Friday July 27th, 2018 with the Captain's meeting Thursday at the Robert's Point Pavilion from 3pm to 7pm for food and fun as well as door prizes for everyone! Come early, stay late, fish hard and have fun!

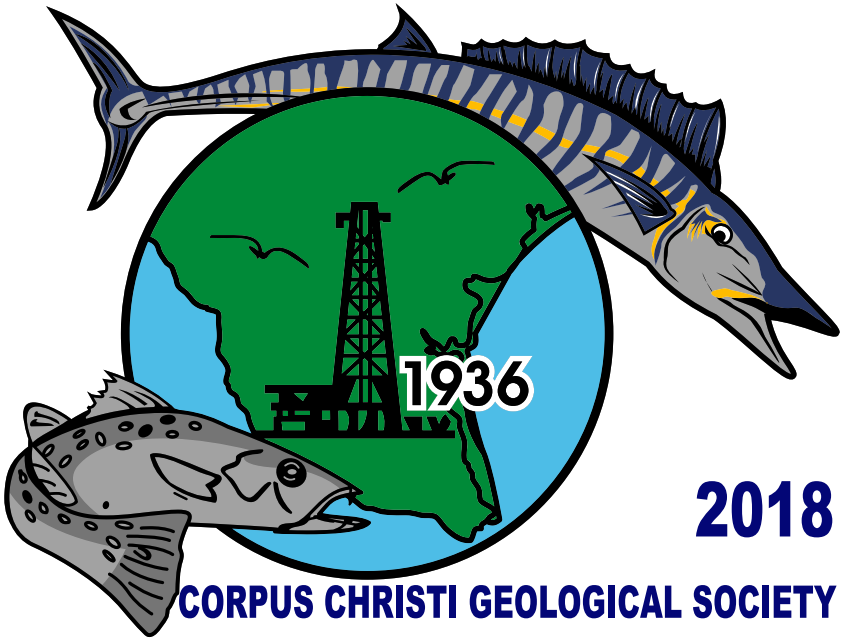
The recent luncheon that showcased the local University student's projects reminded me of my field camp in Ireland for some reason. Being far away from home, hiking tens of kilometers per day through bogs and billy goating up the sides of slick, steep hills. There were beautiful, sunny beach days and 44F raining sideways on the rocks days. We saw textbook geology outcrops and cross-sections of complete E-A Bouma's, the Clare Shale, cirques, turbidites galore, glacial shearing, pillow basalts, fold thrust sequences, folded marble that would blow your mind. I left with a really nice sample of Carboniferous driftwood, stigmara. Sitting in on a Chevron turbidite study with geologists from all over the world in attendance was a pretty cool hour spent before going on a boat ride and looking at outcrops all sunny day. I was also able to spend evenings after dinner teaching myself how to dry fly fish for wary brown trout in Lough Mask. I caught two in a nearly religious 6-week period. Making friends with the locals and the time to roam the countryside before and after field camp found me everlasting friends from a hill down the street from the best Guinness in all of Ireland in a county that makes the best apple cider I've ever had. They visited over Christmas and I was able to take them to a location and show them a well in progress. Tying the academic experience in the summer of 2012 when I graduated to an industry experience five years later was an awesome reflection; and to imagine that the students who presented their posters and talks could be in the same position not too long from now...

Our Society is in good shape to head into a new year with our new venue working out well and allowing our members easier access to luncheons. Our budget is balanced and we have relocated our HQ to a smaller footprint and more logistically sound space down the hall in the same building. Our new board has a few open positions ripe for our expanding younger membership as well as anyone who feels the urge to give a position another go. Our committee members are always coming up with new Field Trip ideas and activities to bring our membership together for fun and continued learning, so the next few years should see some exciting activities to look forward to.

Again, it has been an honor serving our Society as President, and I look forward to serving again in the future.

Austin Nye—CCGS President
Vice President, Exploration & Land

9th ANNUAL SALTWATER FISHING TOURNAMENT



2018

CORPUS CHRISTI GEOLOGICAL SOCIETY

ROBERTS POINT PAVILION

PORT ARANSAS, TX

DOCK PARTY: THURSDAY, JULY 26th

Dinner, Drinks, Door Prizes, 50/50 Raffle

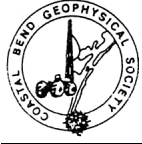
TOURNAMENT: FRIDAY, JULY 27th

Refreshments, Awards

For More Information Email:

ldevine@suemaur.com

www.ccgeo.org



CBGS President's Letter

CBGS Scholarships

The board awarded two scholarships of \$2,000 each to undergraduate geophysics majors from Texas A&M University-College Station, and University of Houston. A third scholarship of \$2,000 will be given to a geophysics major at Texas A&M University-Kingsville.

The following criteria is followed in awarding the scholarships.

1. Must be a citizen of the USA
2. Must have declared Major Geophysics at the main campus of the receiving university
3. Must have GPA 3.0
4. Must be in good standing with the school
5. Must make effort to attend a Coastal Bend Geophysical Society Meeting in Corpus Christi Texas after being awarded a scholarship to be recognized by the society.

Dr. Subbarao Yelisetti- President
Lonnie Blake- Vice President
Matt Hammer- Secretary/ Treasurer
Dr. Robert Schneider- Continuing Education
Lonnie Blake- Golf Chair
Ed Egger- Scholarship Chair

News

- At the time of writing this report, U.S. crude futures have averaged over \$68 a barrel, as opposed to an average of \$50.85 a barrel in 2017 and \$43.47 a barrel in 2016, as reported by Scott DiSavino on reuters.com.
- According the U.S. government, the oil output in the Permian basin will rise to a record high of ~3.2 million barrels per day in May, which is about 30 percent of total U.S. oil production.
- There were 820 oil rigs active in the week of April 20, the highest level since March 2015 as reported by Scott DiSavino on reuters.com.

CBGS Business

CBGS currently has 122 members.

CBGS workshop

CBGS will be offering a Geophysics workshop on April 20th in EOG conference center.

When: 11:00 am – 4:00 pm, April 20th

Where: EOG 3RD Floor Conference Room, 539 N. Caranchua, Corpus Christi, Texas

Cost: Free for CBGS Members/students, \$25 to join CBGS membership for non CBGS members.

Lunch provided by HIS

Talks:

1. **IHS – What’s new/coming in the Kingdom Software Suite**
2. **Tad Smith – SEG Distinguished Lecturer: Seismic Petrophysics**
3. **CGG/Hampson Russell: Reservoir Property Prediction with Seismic**

Contact Lonnie Blake Lonnie_Blake@eogresources.com for additional information.

CBGS is looking forward to offer many such workshops in the future. Topic/speaker suggestions are welcome. Email your suggestions to Subbarao.Yelisetti@tamuk.edu or Lonnie_Blake@eogresources.com

Golf Tournament

CBGS organized its annual **Golf Tournament** to fund its scholarship program on October 6, 2017 at Northshore Country Club.

20 Players, 10 sponsors, 7 contributing cash, 3 contributing golf balls, coolers, etc.....

Raised \$1951 for the scholarship fund.

2018 Golf tournament will be in the first week of October. If you are interested in the Golf Tournament, please contact Lonnie Blake at 361-887-2665 or Lonnie_Blake@eogresources.com

New Degree Tracks at TAMUK

- TAMUK is currently accepting applications for **MS Petrophysics** program for Fall 2018.
- **BS degree in Geophysics, Minor in Geophysics and Certification in Geophysics** offered at Texas A&M University-Kingsville from Fall 2017.

Please contact Dr. Subbarao Yelisetti (Subbarao.Yelisetti@tamuk.edu), graduate coordinator for petrophysics for additional information.

Exploration Geophysics class

PHYS 5382 Exploration Geophysics will be offered in Fall 2018 at Texas A&M University-Kingsville. Schedule is MWF 11:00-11:50 AM. This is available for the professional community as well as our students. You can sign up as a “transient” student in order to take classes without actually enrolling in the school. If anyone in the professional community wishes to sign up for this, please contact the instructor, Dr. Subbarao Yelisetti Subbarao.Yelisetti@tamuk.edu.

SEG Distinguished Lecture

CBGS and TAMUK SEG student chapter organized 2018 SEG Distinguished Lecture in January, 2018. We wish to organize many more lectures in the future.

Education/Events

-SEG

SEG annual meeting will be held in Anaheim, CA from Oct 14th-19th, 2018. Abstract due date is April 1st, 5 pm CDT. See <https://seg.org/Annual-Meeting-2018> for additional details.

See <https://seg.org/Education/Lectures/Distinguished-Lectures> for information about upcoming SEG distinguished lecture in Houston and other locations.

See <https://seg.org/Education/Lectures/Honorary-Lectures> for SEG honorary lecture locations in Texas.

-GSH

SEG and GSH jointly organizing a live webinar on “**Basic Seismic Interpretation**” by **Don Herron and Bob Webgner**. It is scheduled from **10 am-2 pm, May 8-11th, 2018** (four half-days). The course consists of lectures on fundamental topics including basics of petroleum geology, seismic response, velocity, resolution, seismic migration, seismic correlation and mapping techniques, and quantified interpretation. Lectures are supported by hands-on exercises, and the second half of the course includes two practical correlation & mapping projects.

<u>Session 1</u>	<u>Session 2</u>	<u>Session 3</u>	<u>Session 4</u>
·Introduction to Petroleum ·Petroleum Geology ·What is Seismic Exploration ·Intro to Seismic Interpretation	·Seismic response ·Velocity ·Resolution ·Seismic migration	·Fault interpretation ·Horizon interpretation ·Correlation and mapping exercise (3D seismic grid)	·Quantified interpretation ·Bright Spot Interpretation ·Course summary

https://www.gshtx.org/SharedContent/Events/Event_Display.aspx?EventKey=7d75200f-62cf-44fb-b17b-61d8d62943b3&iSearchResult=true&WebsiteKey=955f17e6-46ad-4401-acbd-2af6c393752b

Webinar Pricing	Per Person
Individual Registration	\$390
Company/Group 2-10	\$325
Company/Group 11+	\$295
Individual Student	\$100
Student Group	\$60

-AGU

2018 Fall AGU annual meeting will be held in Washington, DC from December 10th-14th, 2018. <https://fallmeeting.agu.org/2018/>

Monthly Saying

"First look at the size of the prize and then the risk involved - Geology first, Economics second"
- R. E. McGill

Monthly Summary

Texas Oil and Gas Info	Current Month	Last Month	Difference	
Texas Production	MMBO/BCF	MMBO/BCF	MMBO/BCF	
Oil	96.5	98.4	-1.9	December
Condensate	10.5	10.5	0.0	December
Gas	630.3	636.3	-6.0	December
	Current Month	Yr to date - 2018	Yr to date - 2017	
Texas Drilling Permits	1220	3483	3257	March
Oil wells	358	885	801	March
Gas wells	77	242	160	March
Oil and Gas wells	690	2121	2140	March
Other	11	26	41	March
Total Completions	867	2712	1925	March
Oil Completions	656	2067	1537	March
Gas Completions	173	501	256	March
New Field Discoveries	3	6	8	March
Other	3	9	3	March

Subbarao Yelisetti
President, CBGS



CORPUS CHRISTI GEOLOGICAL SOCIETY
COASTAL BEND GEOPHYSICAL SOCIETY



LUNCHEON MEETING ANNOUNCEMENT

MAY 16, 2018

-
- Location:** Water Street Events (Previously the Seafood Company Restaurant), 300 Block N. Water Street, CC, TX 78401
- Student Sponsor:** Imagine Resources, Nye Exploration, Viper Exploration, Ltd.
- Bar Sponsor:** ***SPONSORSHIP OPPORTUNITIES AVAILABLE!!!***
- Time:** 11:30 am Bar, Lunch follows at 11:45 am, Speaker at 12:00 pm
- Cost:** \$25.00 (additional \$10.00 surcharge without reservation; No-shows may be billed, and non-RSVP attendees cannot be guaranteed a lunch); **FREE** for students with reservation (discounted by our generous sponsors)!
- Reservations:** Please **RSVP** by **4PM** on the **FRIDAY** before the meeting!
E-Mail: arrangements@ccgeo.org

Please note that luncheon RSVPs are a commitment to the venue and must be paid even if you can't attend the luncheon.

**SPONSORSHIPS OPPORTUNITIES ARE AVAILABLE!
IF YOU WOULD LIKE TO SPONSOR, PLEASE CONTACT US AT:
arrangements@ccgeo.org**

Imagine Resources, LLC



802 N. Carancahua, Suite 1840
Frost Bank Plaza
Corpus Christi, TX 78401
www.nyexp.us

***VIPER
EXPLORATION,
LTD.***

Hydrocarbon Traps Associated with Upper Wilcox Canyons and Seismic Response, Mid Gulf Coast, Texas

Abstract:

Three types of hydrocarbon traps occur along the predominantly shale filled Upper Wilcox (Early Eocene) canyons in Dewitt, Goliad, Victoria, and Lavaca Counties, TX: 1) Regional Upper Wilcox sands trapped (unconformably) against the shale filled canyon wall, 2) Meandering channel sands within the shale canyon fill, and 3) Canyon fill sands associated with the final phase of canyon fill and initial phase of the return to regional deltaic sedimentation (regression). These are listed in economically significant order. Poor production does not eliminate a trap type from consideration in exploration, as these wells can be considered “show” wells and reduce the risk of hydrocarbon presence. The Anna Barre/Meyersville and Jennie Bell canyons were previously described by the author, occurring in two separate stratigraphic intervals of the Upper Wilcox. These are shelf incised canyons with adjacent slope confined canyons.

The sandstone trap against a shale filled canyon (unconformity) is common along the Middle Wilcox Yoakum Canyon. It is the best trap for the Upper Wilcox canyon fields as well. Anna Barre Wilcox J (RRC) field has produced 38.4 BCFG and 561 MBC from the Middle Wilcox J sand on a rollover of 630 acres with 94' of closure truncated by canyon erosion. The Upper Wilcox Lower Massive 1 and 2 (LM1, LM2, this author) has produced 37 BCFG and 730 MBC from the Mission Valley 10220 sandstones and Mission Valley, W. 10600. The trap is a structural rollover with lateral sandstone truncation by deep canyon erosion. These two traps occur in the Anna Barre and Meyersville canyons, respectively.

Meandering sandstone structural/stratigraphic traps are present in the Jennie Bell canyon and the Anna Barre canyon. Thomaston 8750 (2 BCFG & 19.1 MBC), Anna Barre 8400 (0.6 BCFG & 6.9 MBC), and Rob Welder Wilcox 9100 (1.1 BCFG & 30.5 MBC) are all one well fields from a similar meandering sandstone in the Jennie Bell canyon. The canyon has as many as seven separate meander sands. Within the Meyersville canyon one well has produced a “show” (0.013 BCFG) from the Meyersville Massive IV sandstone. Anna Barre 8400 and Rob Welder Wilcox 9100 are in structurally high locations on rollovers. Thomaston 8750 and Meyersville Massive IV sandstone traps occur along the north flank of Thomaston and Meyersville E, fields, respectively.

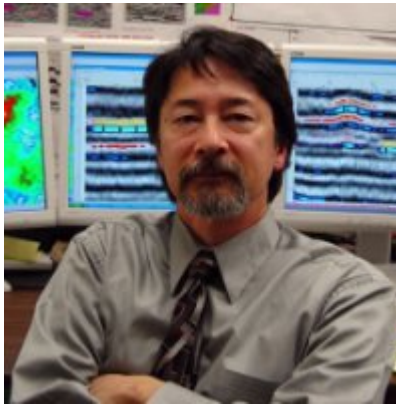
Sandstones productive from the initial delta filling of the uppermost canyons occur in Anna Barre 8500 (TC 0.8 BCFG and 16 MBC) in a structural rollover trap.

Canyons can be identified on some seismic data, using varying color bars and noting reflector termination against canyon walls. Mission Valley 10220 sandstone “lights up” on amplitude and has an AVO response. Meanders can clearly be seen with seismic

data in both canyons. Classic AVO cannot distinguish wet meander sandstones from productive reservoirs.

Presented by:

Frank Cornish - Imagine Resources, LLC




About our Presenter:

Frank Cornish received his BS from LSU (1973) and MA from UT at Austin (1975) in geology. He began his career with the USGS in Colorado in 1973. After UT he worked the Permian and Anadarko Basins for Getty Oil in Midland and Oklahoma City. In 1978 he started with Texas Oil and Gas in Oklahoma City and was transferred to Corpus Christi as a District Geologist. After TXO was sold in 1990, he worked for Suemaur Exploration, Yuma Exploration, and SV Energy. Since 2003 he has generated prospects for various industry partners under his company name of Imagine Resources, LLC. Currently he is consulting for Suemaur Exploration in Corpus Christi.

He is the author of several technical and popular articles, including “Dinosaurs”, Texas Highways, 1988, “Riches in the Heart of Texas”, Texas Parks and Wildlife, 1991. Mr. Cornish has studied and published papers about the Recent/Pleistocene sediments along the Nueces River with Dr. Jon Baskin of Texas A & M, Kingsville. Mr. Cornish is a Distinguished Member of the Corpus Christi Geological Society Award since 1995. He has received the GCAGS Distinguished Service award in 2007. He coauthored a paper with Robert W Parker “Southwest Speaks Lower Wilcox Structural Complex, Lavaca County, Texas” which has been awarded the 3rd place Grover E Murray Best published paper for the 2007 GCAGS Transactions. This paper is an extension of a poster session for 2016 GCAGS in Corpus Christi. He is a member of AAPG, SEG, SIPES, CCGS, CBGS, and Rotary.

SPONSORS



Nueces Energy, Inc.
P.O. Box 252
Corpus Christi, Texas 78403
Office: (361) 884-0435
Fax: (361)-654-1436
www.nuecesland.com

Nueces Energy, Inc. is a complete land services company in the business of providing professional landmen and project management to various energy related jobs primarily in the oil and gas industry.

With over 30 years of industry experience, we specialize in determining surface and subsurface ownership and negotiating and acquiring contracts, rights of way agreements, and easements to provide our clients with the legal right to explore and develop oil and gas resources. We provide a full service land company capable of managing any project no matter how large or small.



THUNDER EXPLORATION, INC.

Celebrating 30+ years of prospect generation and exploration in the following South Texas plays and trends.

Frio	San Miguel	Edwards
Jackson	Austin Chalk	Pearsall
Yegua	Eagle Ford	Sligo
Wilcox	Buda	Cotton Valley
Olmos	Georgetown	Smackover

Thunder is currently seeking non-operated working interest participation in projects and prospects.

Contact **Walter S. Light Jr.**
President/Geologist
 713.823.8288
 EMAIL: wthunderx@aol.com

Headington Oil Company is now...



HEADINGTON
 ENERGY PARTNERS, LLC

Proudly operating in South Texas.

For more information contact:
Randy Bissell, randyb@headingtonenergy.com or call 361-885-0113



Offices in Corpus Christi, Sarita, and McKinney, Texas - Exploring and Developing properties
 In South Texas, Permian Basin , East Texas & Oklahoma



**Learning From
The Past...**



**...Surveying
The Future**



Real Impacts of Sea Level and Subsidence along the Texas Coast

Philippe Tissot

**Texas A&M University-Corpus Christi
Conrad Blucher Institute**

**Contributions from Anthony Reisinger & Mark Besonen
Harte Research Institute, Texas A&M University-Corpus
Christi**

**Corpus Christi Geological Society & Coastal Bend
Geophysical Society Luncheon Meeting
April 18, 2018**

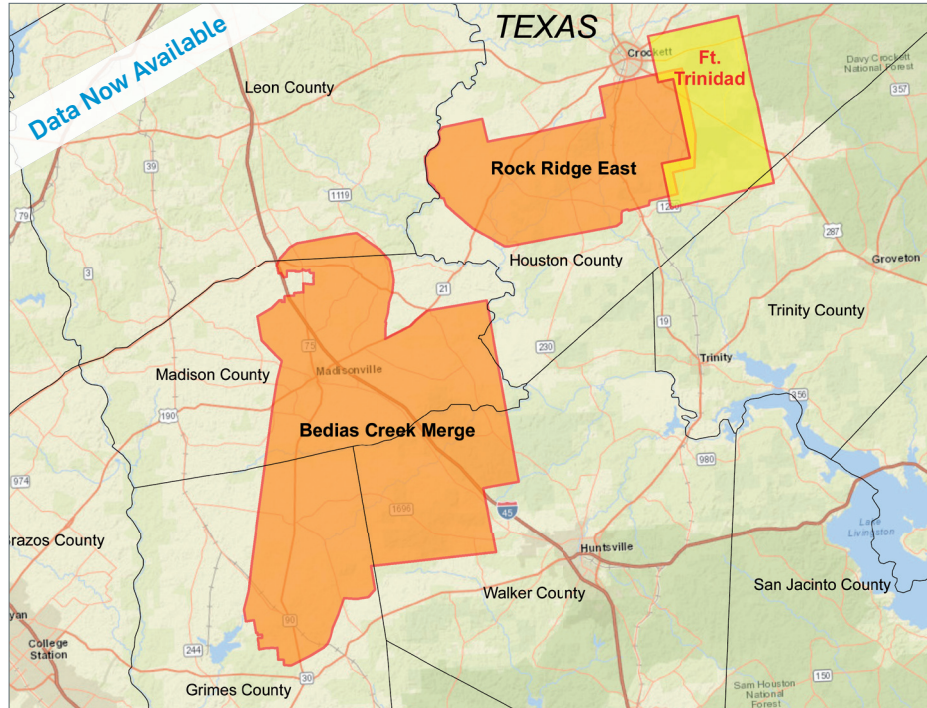
Global sea level rise (GSLR) was remarkably steady for the past six or seven thousand years. Last century GSLR rose at a rate of about 1.7mm/yr. Presently gslr is increasing at a rate of ~ 3.4 mm/yr. This may not seem like much but if such rate had prevailed over the past 6,000 years we would have sea levels about 20m above present level, a consequential difference.

continued on page 19



New Ft. Trinidad 3D Survey Houston and Trinity Counties, TX

YOU'VE ARRIVED



CGG continues to expand its East Texas footprint with high-quality 3D projects while illuminating the stacked pay formations.

Data is already available from our Bedias Creek Merge and Rock Ridge East projects. Orthorhombic PSTM from our newest project Ft. Trinidad is also now available.

The right data, in the right place, at the right time

Scott Tinley
☎ +1 832 351 8544
✉ scott.tinley@cgg.com

Cheryl Oxsheer
☎ +1 832 351 8463
✉ cheryl.oxsheer@cgg.com



cgg.com/ROP



Long Term Sea Level Rise: 24K years

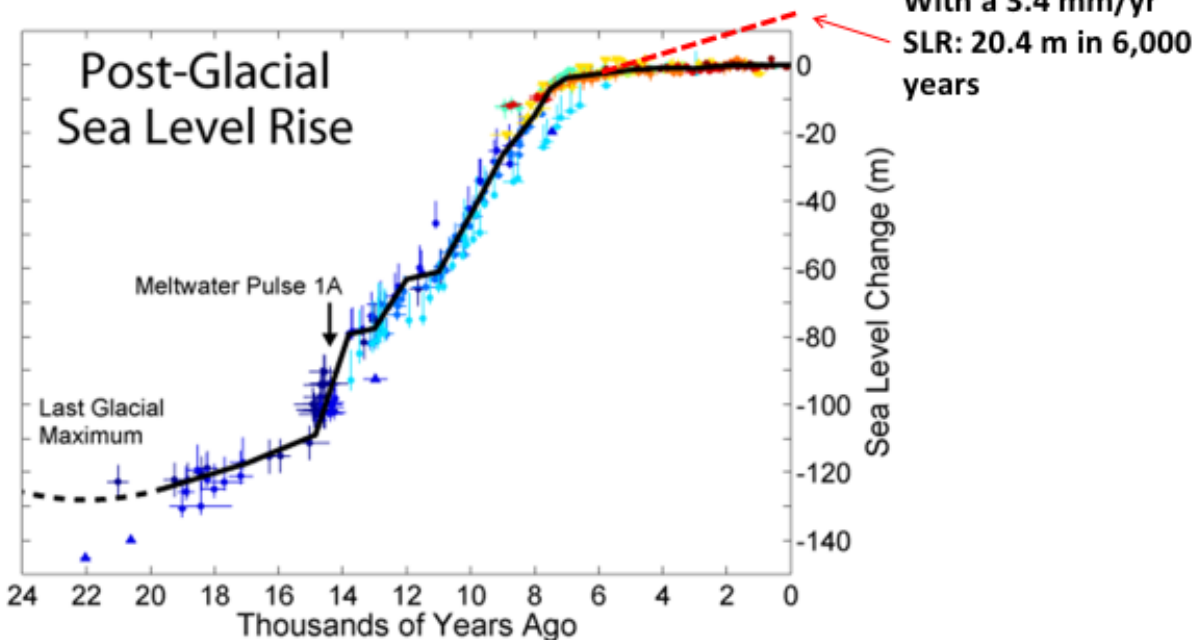


Figure: (http://en.wikipedia.org/wiki/Current_sea_level_rise)

Improvements in our ability to observe quantitatively our planet such as measuring sea levels globally thanks to satellite altimetry, measuring water temperatures and other parameters around the world's oceans thanks to the Argos buoys and quantifying changes in glaciers and other land forms thanks to the Grace satellites mission, allow us to understand well the recent causes of global sea level rise.

Continued on page 21

JOIN!



The Desk & Derrick Club of Corpus Christi is a dynamic organization that promotes the education of the petroleum, energy and allied industries and advances the professional

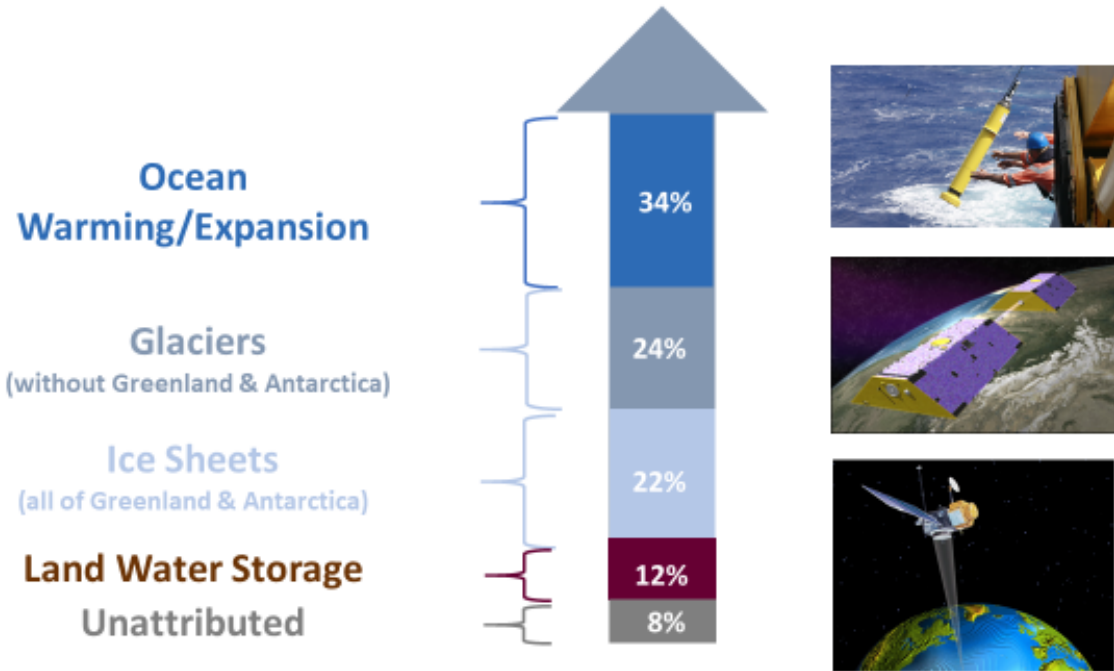
Member Benefits:

- Learn from energy industry experts.
- Network with energy industry leaders and colleagues.
- Attend regional and national meetings.
- Receive critical updates and information about the energy industry.
- Enhance communication and leadership skills.
- Make friends for life!

For more information about the Desk & Derrick Club of Corpus Christi and to learn about member eligibility, go to www.addc.org or contact Jena Nelson at 361-844-6726 or email at jena@amshore.com

The Desk & Derrick Club of Corpus Christi is a proud affiliate of the Association of Desk And Derrick Clubs, www.addc.org

Components to Global Sea Level rise (IPCC AR5, 2013) (1993-2010)



When thinking about longer term (2050-2100) GSLR, the role of Greenland and Antarctica will be critical. Research is ongoing to better model glaciers melting, migration and contributions to the oceans. During the next decade we should have much better models to estimate how these areas of our planet will contribute to the rate of GSLR including a substantial risk of larger GLSR than presently estimated in the latest IPCC report.

continued on page 23

SPONSORS



**USE PROMO CODE - CCGSTRIDE
FOR \$5.00 OFF YOUR FIRST RIDE.**

**DOWNLOAD THE TRIDE
PASSENGER APP TODAY!**

GET IT ON
 **Google Play**

 Download on the
App Store

RIDETRIDE.COM

STALKER ENERGY, L.P.

Austin Office:

1717 W. 6th Street, Ste 230

Austin, Texas 78703

512.457.8711

Contact: Bill Walker, Jr.

bwalker@stalkerenergy.com

Houston Office:

2001 Kirby Drive, Suite 950

Houston, Texas 77019

713.522.2733

Contact: Todd Sinex

tsinex@stalkerenergy.com

www.stalkerenergy.com





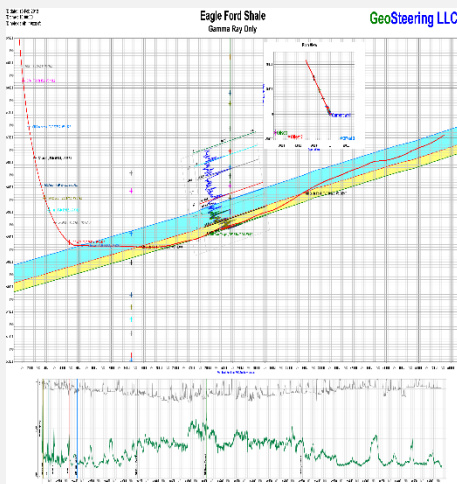
When looking at SLR in Texas, we have a great time series for Galveston. The tide gauge of Pier 21, maintained by NOAA and part of the National Water Level Observation Network (NWLON), has been active since 1908 with hardly any gaps. A wonderful technical and scientific achievement. The rate of sea level rise is 6.4mm/yr over this time, quite larger than the values discussed above.

The difference is due to vertical land motion, subsidence in this case. Combining the change in average water levels (sea level rise) and vertical land motion leads to relative sea level rise (RSLR), the important parameter if you have property or infrastructure on the shoreline!

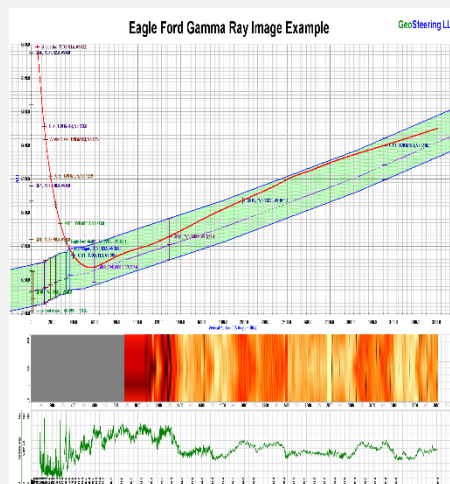
continued on page 25

Geosteering in the USA and Internationally since 2002

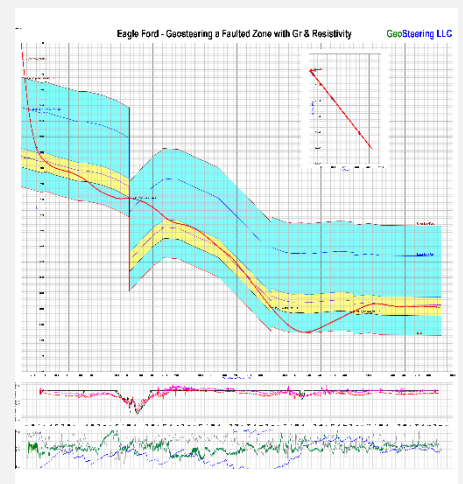
Steering with GR



Steering with Images

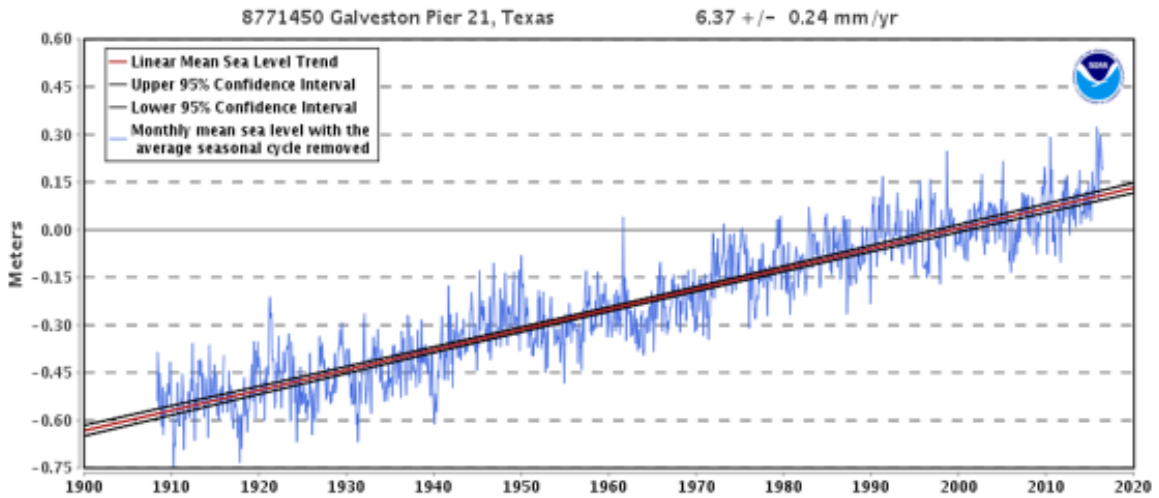


Steering with Resistivity



Experience in Texas

Austin Chalk, Barnett, Buda, Caddo, Devonian, Eaglebine / Woodbine, Eagle Ford, Georgetown, Granite Wash, Permian (Delaware, Midland), Smithwick



Galveston Pier 21

0.25" / year

100 years = 2.1 ft

RSLR varies around the coastlines, positive and sometimes large in the lower 48 states often negative further north. RSLR is particularly high in the northwest portion of the Gulf of Mexico.

continued on page 27



SABALO ENERGY

SABALO ENERGY | P.O. BOX 2907 | CORPUS CHRISTI, TX 78403 | 361.888.7708 | SABALOENERGY.COM

Relative Sea Level Rise in the NW Gulf of Mexico



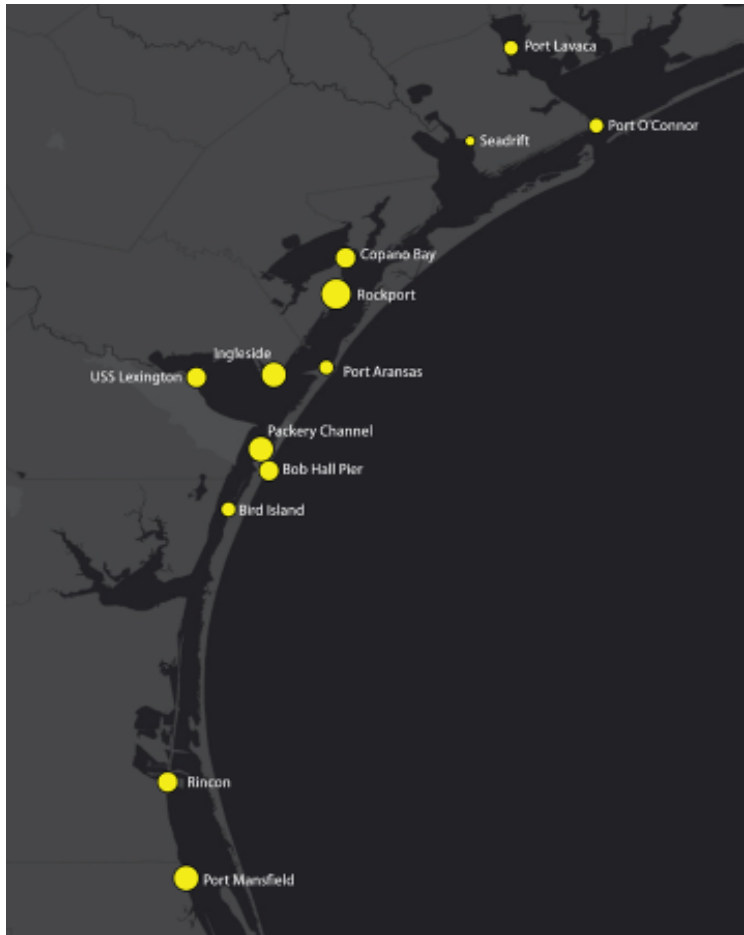
The Northwest Gulf of Mexico is home to the largest rates of relative sea level rise in the US and 10 of the largest 13 US ports by tonnage (USDOT 2016)

The map above illustrates regional trends in sea level, with arrows representing the direction and magnitude of change. Click on an arrow to access additional information about that station.

Sea Level Trends mm/yr (feet/century)			
15 to 21 (5 to 7)	6 to 9 (2 to 3)	-3 to 0 (-1 to 0)	-12 to -9 (-4 to -3)
12 to 15 (4 to 5)	3 to 6 (1 to 2)	-6 to -3 (-2 to -1)	-15 to -12 (-5 to -4)
9 to 12 (3 to 4)	0 to 3 (0 to 1)	-9 to -6 (-3 to -2)	-18 to -15 (-6 to -5)

While the previous slides showed the variability of RSLR around the country's shorelines, there is also variability at the local scale. Recent research at TAMUCC has combined the tide gauge signals of a high-density network of stations (combination of NWLON and TCOON tide gauges) with 20-25 years' time series. While this time span is in general too short to estimate rslr, the combination of the group of stations signals allowed for an improvement of the classic method to estimate rslr. The results are displayed in the following slide. RSLR rates range from 3.0 to 8.4 mm/yr with confidence intervals of less than 1.1 mm/yr, on average 0.7 mm/yr.

continued on page 28



Coastal Bend Relative Sea Level Rise Variability

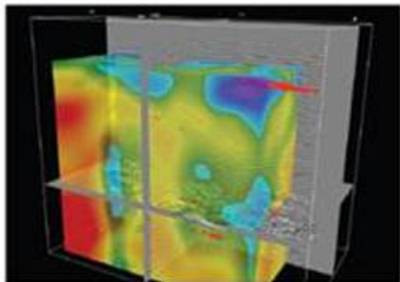
Several hypotheses are considered to explain the spatial variability of RSLR in the Coastal Bend including (1) influence of growth faults (several tide gauges are located in their vicinity), (2) fluid extraction including oil and gas wells and groundwater pumping, (3) difference in compaction rates related to the coastal geology including presence of former river beds.

Continued discussions and advice from local geologists are most welcomed. Special thanks to Michael Hill, Ray Govett, Dorina Murgulet and others for sharing ideas and advice during and after the talk.

continued on page 30

SEIMAXSM
TECHNOLOGIES

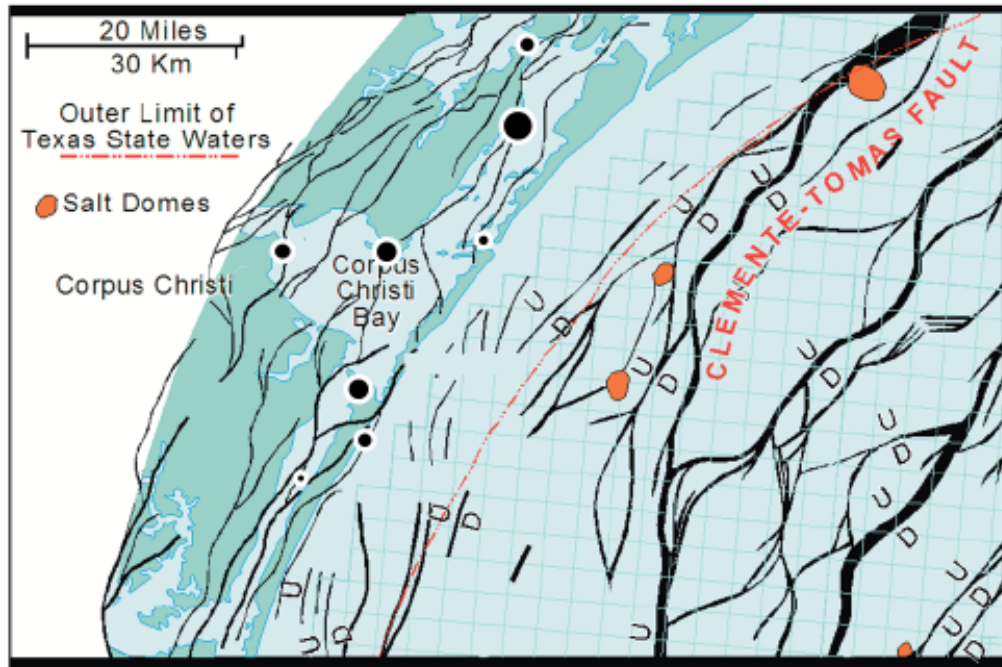
Innovative Seismic
Processing Solutions



**2D and 3D Land and Marine
Pre-Stack Time and Depth Imaging**

**Pre- and Post-Stack Attributes
for Amplitude, Frequency and
Resolution**

4805 Westway Park Blvd. Houston, TX 77041
p: 832.554.4301 www.seimaxtech.com



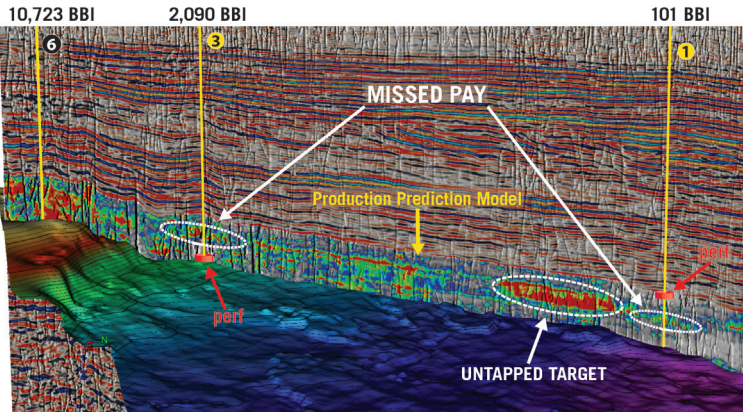
modified from Trevino et al. (2003)

Figure from: Hammes, U., et al. "Structural setting and sequence architecture of a growth-faulted lowstand subbasin, Frio Formation, South Texas." Gulf Coast Association of Geological Societies Transactions, Vol. 54, 2004.

Regarding rslr, there are also special cases such as the city of Corpus Christi's bay front and marina which were built on fill (bay sediments) in the 30s and early 40s in response to the impact of the 1919 Hurricane. Based on historic photographs of the sea wall, the rate of vertical land motion is likely much larger there than the rest of the Coastal Bend. The message is that RSLR is local, in large part dependent on coastal geology and sometimes anthropogenic input.

continued on page 32

SEISMIC-BASED ANALYTICS



An arbitrary line through 3 vertical wells in the West Texas Permian Basin shows the lateral variations of the Production Prediction Model and reveals refrac potential for Wells 1 and 3 where the red disks indicate the actual completion intervals and the white circles highlight the missed pay. Note the untapped target near Well 1.

In today's challenging market, no one can afford a bad well. Global's seismic-based analytics can help you avoid the pitfalls and pinpoint the sweet spots. By integrating seismic, geological, and engineering data, this proprietary workflow identifies the most prospective areas and zones for drilling - down to the stage level! This reduces risk, optimizes spend, and greatly increases the chance for every well and stage to be a winner.

- High-grade prospective drilling areas and zones
- Enhance well planning and geosteering
- Optimize completion placements and frac design
- Predict well performance at stage level
- Boost EUR of individual wells
- Identify candidates for refrac

Global's **SEISMIC-BASED ANALYTICS** approach is field-proven with successful projects in both conventional and unconventional reservoirs. Contact us today to find out how Global can help you make every well a winner.

FIND WHAT YOU'VE BEEN MISSING

For More Information:

www.globalgeophysical.com/ANALYTICS or
Contact ANALYTICS@globalgeophysical.com





When looking at water levels in the Coastal Bend one need to include other factors than just the tides (tides = impact of gravitational pull of moon, sun and response of ocean basins on water levels). The Coastal Bend is the windiest coastline of the lower 48 states. Wind influences water levels short term during frontal passages and strong southeasterlies, monthly, seasonally and year to year. The tide range is about a foot along the coast (Bob Hall Pier) and much smaller in the bays and estuaries, the seasonal range is also about a foot as well as the interannual or year to year difference. Considering only the “gravitational tides” is usually insufficient to analyze water levels and their impact on the Coastal Bend.

continued on page 34

SPONSORS

SEI®

YOUR
Full Service
National
Seismic Data
Marketing Firm

Seismic Exchange, Inc.

Strategic Speculative Surveys
Geophysical Data Marketing & Management

Corpus Marketing Contact
Lana Lipinski
llipinski@seismicexchange.com

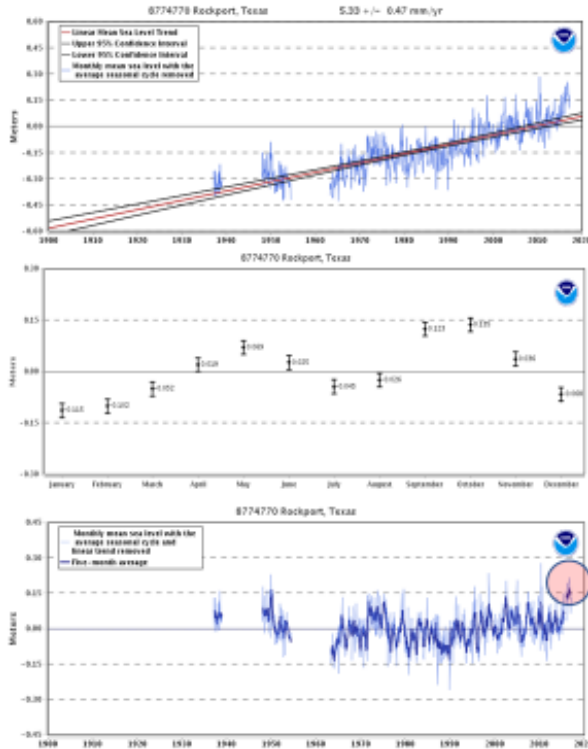
DALLAS DENVER HOUSTON NEW ORLEANS TULSA
4805 Westway Park Blvd., Houston, Texas 77041 832.590.5100

www.seismicexchange.com



VirTex Operating Company, Inc.

615 North Upper Broadway, Suite 525, Corpus Christi, Texas 78477
(361) 882-3046



Long term relative sea level rise:
5.3 +/-0.5 mm/yr (1.7 ft/100 yr)

Seasonal variability: **~ 1 ft**

Interannual variability: **~ 1 ft**

For the future impact of RSLR, one needs to rely on estimates and models. The speaker finds the sea level rise component of the IPCC report excellent, uses it as his guide and recommends to do so with the caveat that the information and in particular the predictions will change as the science advances, particularly predictions beyond 2050.

continued on page 36

SPONSORS

CHARGER EXPLORATION

Michael L. Jones
President/Geologist

Onshore Gulf Coast Prospect Generation and Consulting

1001 McKinney Street, Suite 801 Houston, TX 77002
Ofc: 713.654.0080 Cell: 713.398.3091
Email: mjones@chargerexploration.com
www.chargerexploration.com

Serving Corpus Christi for over 20 years

 **mail express**
501 S. Tanchua St.
Corpus Christi, TX 78401

- We process 1st class mail with a direct discount to you
- No meter procedure change except for the amount you meter your envelopes

CALL 888-4332 for details - Ask for Anne

That old gas kick could be your next discovery!

Characterization of Unconventional Reservoirs

Traditional methods of core analysis cannot yield acceptable results when applied to unconventional reservoirs such as gas shales, tight gas sands, coals and thin bed formations.

Production controls on these reservoirs are not limited to hydrocarbons in place, permeability and porosity. Pay identification requires an understanding of complex lithologies and exotic mineralogies.

Only Core Lab offers the comprehensive range of unique technologies required to optimize your unconventional reservoirs.

Geological Petrophysical Geomechanical Geochemical

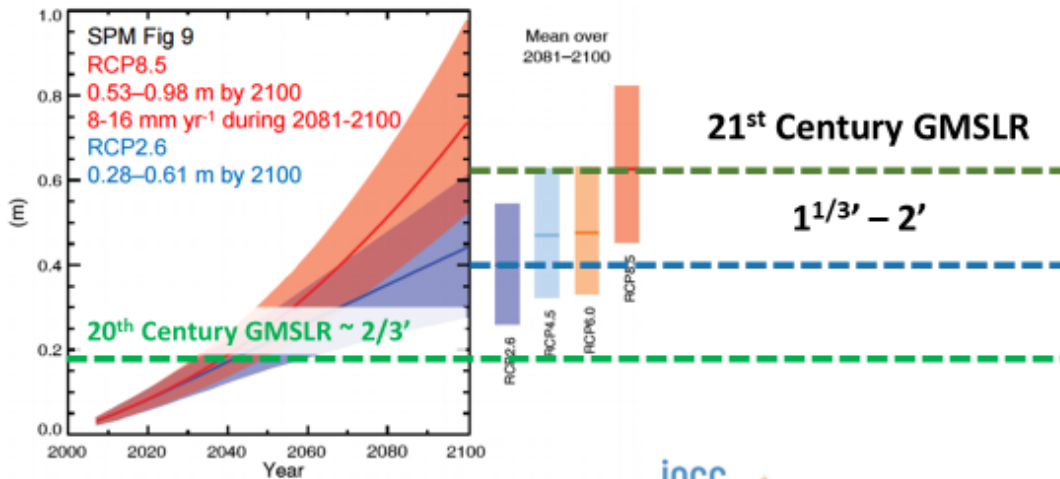


To learn more about our unique unconventional reservoir evaluation services contact Core Lab.
(713) 328-2121 or (361) 289-5457 psinfo@corelab.com

© 2005 Core Laboratories. All rights reserved.

Projections of 21st-century GMSLR under RCPs

Medium confidence in likely ranges



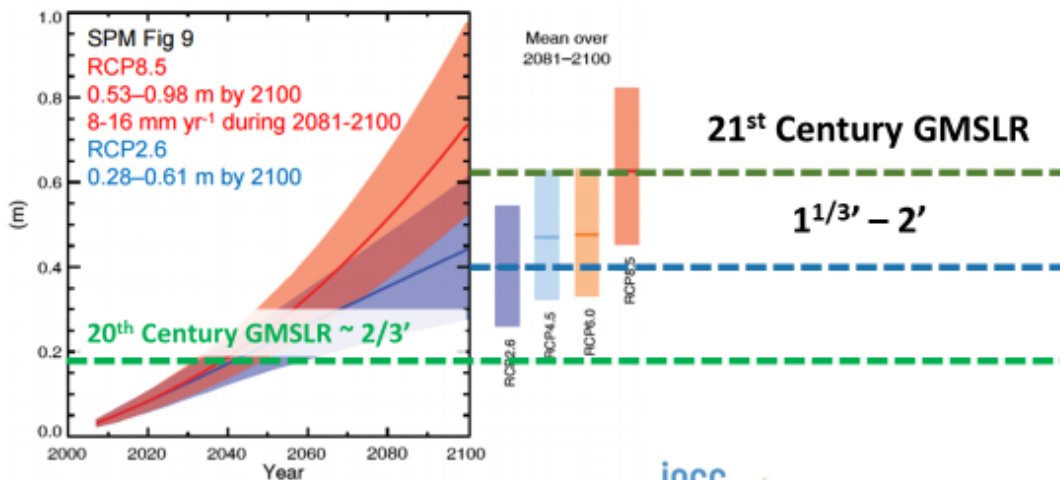
IPCC AR5 Working Group I
Climate Change 2013: The Physical Science Basis

IPCC ARV (2013):

Likely range of GMSLR for 2081–2100 is 0.40 to 0.63 m above 1986–2015 (medium confidence)
It is virtually certain that GMSLR will continue for many centuries beyond 2100

Projections of 21st-century GMSLR under RCPs

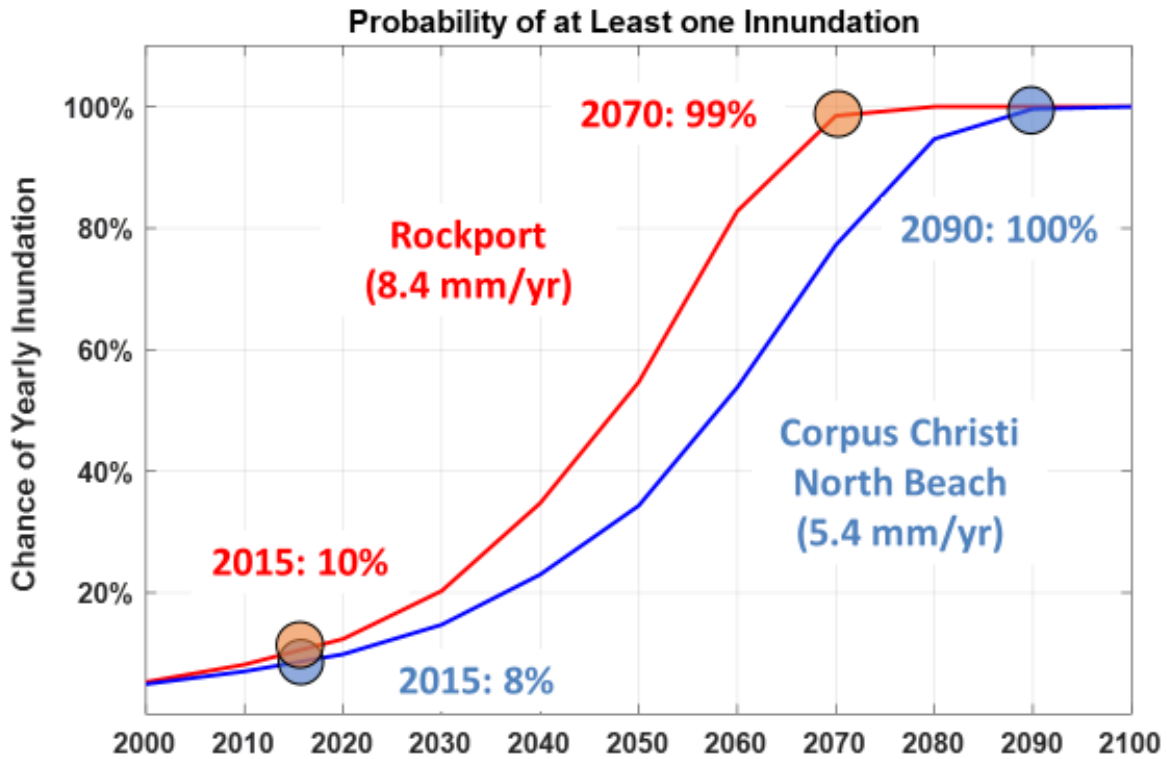
Medium confidence in likely ranges



IPCC AR5 Working Group I
Climate Change 2013: The Physical Science Basis

IPCC ARV (2013):

Likely range of GMSLR for 2081–2100 is 0.40 to 0.63 m above 1986–2015 (medium confidence)
It is virtually certain that GMSLR will continue for many centuries beyond 2100



For more information a recent meeting ahead of the next IPCC took place in New York in July 2017. Great source of the latest research results.

continued on page 39

sponsors



Winn Exploration Co., Inc.

Actively Seeking High Quality
Drilling Prospects

Contacts:

Mike Layman (Geophysicist)	361-844-6922
Tom Winn (Geologist)	361-844-6992
Southern Winn (Geologist)	361-844-6998

800 North Shoreline Blvd.
19th Floor, North Tower
Corpus Christi, Texas 78401

Office: 361-844-6900 Fax: 361-844-6901

SUEMAUR

Experience. Expertise. Exploration.

EXPLORING SINCE 1968



539 N Carancahua St, Suite 1100, Corpus Christi, TX 78401

(361) 884-8824

www.suemaaur.com



Regional Sea Level Changes and Coastal Impacts
10-14 July 2017, Columbia University, New-York (NY) - USA

Conference Sessions:

- Paleo sea level data and GIA modeling
- Millennial-scale ice sheet and sea level interactions
- Contemporary contributions from ice sheets and glaciers
- Contemporary sea level change
- Coastal zone
- Sea level rise adaptation in greater New York: the response to Sandy and beyond
- Projections

Corpus Christi Geological Society Papers available for purchase at the Texas Bureau of Economic Geology

Note: Publication codes are hyperlinked to their online listing in [The Bureau Store](http://begstore.beg.utexas.edu/store/) (<http://begstore.beg.utexas.edu/store/>).

Cretaceous-Wilcox-Frio Symposia, D. B. Clutterbuck, Editor, 41 p., 1962.
[CCGS 002S](#) \$15.00

Type Logs of South Texas Fields, Vol. I, Frio Trend. Compiled by Don Kling. Includes 134 fields. 158 p., 1972. Ring binder.
[CCGS 015TL](#) \$25.00

Type Logs of South Texas Fields, Vol. II, Wilcox (Eocene) Trend. Compiled by M. A. Wolbrink. 98 p., 1979. Ring binder.
[CCGS 016TL](#) \$25.00

Field Trip Guidebooks

South Texas Uranium. J. L. Cowdrey, Editor. 62 p., 1968.
[CCGS 102G](#) \$12.00

Hidalgo Canyon and La Popa Valley, Nuevo Leon, Mexico. CCGS 1970 Spring Field Conference. 78 p., 1970.
[CCGS 103G](#) \$8.00

Padre Island National Seashore Field Guide. R. N. Tench and W. D. Hodgson, Editors. 61 p., 1972.
[CCGS 104G](#) \$5.00

Triple Energy Field Trip, Uranium, Coal, Gas—Duval, Webb & Zapata Counties, Texas. George Faga, Editor. 24 p., 1975.
[CCGS 105G](#) \$10.00

Minas de Golondrinas and Minas Rancherías, Mexico. Robert Manson and Barbara Beynon, Editors. 48 p. plus illus., 1978.
[CCGS 106G](#) \$15.00

Portrero Garcia and Huasteca Canyon, Northeastern Mexico. Barbara Beynon and J. L. Russell, Editors. 46 p., 1979.
[CCGS 107G](#) \$15.00

Modern Depositional Environments of Sands in South Texas. C. E. Stelling and J. L. Russell, Editors. 64 p., 1981.
[CCGS 108G](#) \$15.00

Geology of Peregrina & Novillo Canyons, Ciudad Victoria, Mexico, J. L. Russell, Ed., 23 p. plus geologic map and cross section, 1981.
[CCGS 109G](#) \$10.00

Geology of the Llano Uplift, Central Texas, and Geological Features in the Uvalde Area. Corpus Christi Geological Society Annual Spring Field Conference, May 7-9, 1982. Various paginated. 115 p., 53 p.
[CCGS 110G](#) \$15.00

Structure and Mesozoic Stratigraphy of Northeast Mexico, prepared by numerous authors, variously paginated. 76 p., 38 p., 1984.
[CCGS 111G](#) \$15.00

Geology of the Big Bend National Park, Texas, by C. A. Berkebille. 26 p., 1984.
[CCGS 112G](#) \$12.00

GEO LINK POST

<http://www.lib.utexas.edu/books/landsapes/index.php> Free service. Rare, fragile, hard-to-find, public domain documents covering various topics about the landscape of Texas. Includes the Texas Geological Survey from 1887 until 1894.

USGS TAPESTRY OF TIME AND TERRAIN <http://tapestry.usgs.gov> The CCGS is donating to all of the 5th and 6th grade schools in the Coastal Bend. Check it out--it is a spectacular map. You might want to frame one for your own office. The one in my office has glass and a metal frame, and It cost \$400 and it does not look as good as the ones we are giving to the schools.

FREE TEXAS TOPOS'S <http://www.tnris.state.tx.us/digital.htm> these are TIFF files from your state government that can be downloaded and printed. You can ad them to SMT by converting them first in Globalmapper. Other digital data as well.

FREE NATIONAL TOPO'S [http://store.usgs.gov/b2c_usgs/b2c/start/\(xcm=r3standardpitrex_prd\)/.do](http://store.usgs.gov/b2c_usgs/b2c/start/(xcm=r3standardpitrex_prd)/.do) go to this webpage and look on the extreme right side to the box titled TOPO MAPS DOWNLOAD TOPO MAPS FREE.

<http://www.geographynetwork.com/> Go here and try their top 5 map services. My favorite is 'USGS Elevation Date.' Zoom in on your favorite places and see great shaded relief images. One of my favorites is the Great Sand Dunes National Park in south central Colorado. Nice Dunes.

<http://antwrp.gsfc.nasa.gov/apod/asropix.html> Astronomy picture of the day--awesome. I click this page everyday.

<http://www.spacimaging.com/gallery/ioweek/iow.htm> Amazing satellite images. Check out the gallery.

<http://www.ngdc.noaa.gov/seg/topo/globegal.shtml> More great maps to share with kids and students.

www.ccgeo.org Don't forget we have our own we page.

<http://terra.nasa.gov/gallery/> Great satellite images of Earth.

www.ermaper.com They have a great free downloadable viewer for TIFF and other graphic files called ER Viewer.

<http://terrasrver.com> Go here to download free aerial photo images that can be plotted under your digital land and well data. Images down to 1 meter resolution, searchable by Lat Long coordinate. Useful for resolving well location questions.

TYPE LOGS OF SOUTH TEXAS FIELDS by Corpus Christi Geological Society

ARANSAS COUNTY

Aransas Pass/McCampbell Deep
Bartell Pass
Blackjack
Burgentine Lake
Copano Bay, South
Estes Cove
Fulton Beach
Goose Island
Half Moon Reef
Nine Mile Point
Rockport, West
St. Charles
Tally Island
Tract 831-G.O.M. (offshore)
Virginia

BEE COUNTY

Caesar
Mosca
Nomanna
Orangedale(2)
Ray-Wilcox
San Domingo
Tulsita Wilcox
Strauch_Wilcox

BROOKS COUNTY

Ann Mag
Boedecker
Cage Ranch
Encintas
ERF
Gyp Hill
Gyp Hill West

Loma Blanca
Mariposa
Mills Bennett
Pita

Tio Ayola
Tres Encinos

CALHOUN COUNTY

Appling
Coloma Creek, North
Heyser
Lavaca Bay
Long Mott
Magnolia Beach
Mosquito Point
Olivia
Panther Reef
Powderhorn
Seadrift, N.W.
Steamboat Pass
Webb Point

S.E. Zoller
CAMERON COUNTY

Holly Beach
Luttes
San Martin (2)
Three Islands, East

Vista Del Mar

COLORADO COUNTY

E. Ramsey
Graceland N. Fault Blk
Graceland S. Fault Blk

DEWITT COUNTY

Anna Barre
Cook
Nordheim
Smith Creek
Warmesley
Yorktown, South

DUVAL COUNTY

DCR-49
Four Seasons
Good Friday
Hagist Ranch
Herbst
Loma Novia
Petrox
Seven Sisters
Seventy Six, South
Starr Bright, West

GOLIAD COUNTY

Berclair
North Blanconia
Bombs
Boyce
Cabeza Creek, South
Goliad, West
St Armo
Terrell Point

HIDALGO COUNTY

Alamo/Donna
Donna
Edinburg, West
Flores-Jeffress
Foy
Hidalgo

LA Blanca
McAllen & Pharr
McAllen Ranch
Mercedes

Monte Christo, North
Penitas
San Fordyce
San Carlos
San Salvador
S. Santallana
Shary
Tabasco
Weslaco, North
Weslaco, South

JACKSON COUNTY

Carancahua Creek
Francitas
Ganado & Ganado Deep
LaWard, North
Little Kentucky

Maurbro
StewartSwan Lake
Swan Lake, East

Texana, North
West Ranch

JIM HOGG COUNTY

Chaparosa
Thompsonville,N.E.

JIM WELLS COUNTY

Freebom
Hoelscher
Palito Blanco
Wade City

KARNES COUNTY

Burnell
Coy City
Person
Runge

KENEDY COUNTY

Candelaria
Julian
Julian, North
Laguna Madre

Rita
Stillman

KLEBERG COUNTY

Alazan
Alazan, North
Big Caesar
Borregos
Chevron (offshore)
Laguna Larga
Seeligson
Sprint (offshore)

LA SALLE COUNTY

Pearsall

LAVACA COUNTY

Hallettsville
Hope
Southwest Speaks
Southwest Speaks Deep

LIVE OAK COUNTY

Atkinson
Braslau
Chapa
Clayton
Dunn
Harris
Houdman
Kittie West-Salt Creek
Lucille
Sierra Vista
Tom Lyne
White Creek
White Creek, East

MATAGORDA COUNTY

Collegeport

MCMULLEN COUNTY

Arnold-Weldon
Brazil
Devil's Waterhole
Hostetter
Hostetter, North
NUECES COUNTY
Agua Dulce (3)
Arnold-David
Arnold-David, North
Baldwin Deep
Calallen
Chapman Ranch

Corpus Christi, N.W.
Corpus Christi West C.C.
Encinal Channel
Flour Bluff/Flour Bluff, East
GOM St 9045(offshore)
Indian Point

Mustang Island
Mustang Island, West
Mustang Island St.
889S(offshore)

Nueces Bay/Nueces Bay
West

Perro Rojo

Pita Island
Ramada
Redfish Bay
Riverside
Riverside, South

Saxet
Shield
Stedman Island

REFUGIO COUNTY

Turkey Creek
Bonnieview/Packery Flats

Greta
La Rosa
Lake Pasture
Refugio, New

SAN PATRICIO COUNTY

Tom O'Connor
Angelita East
Commonwealth
Encino
Enos Cooper
Geronimo
Harvey
Hiberia
Hodges
Mathis, East
McCampbell Deep/Aransas Pass
Midway
Midway, North
Odem

Plymouth
Portilla (2)
Taft
Taft, East
White Point, East

STARR COUNTY

El Tanque
Garcia
Hinde
La Reforma, S.W.
Lyda
Ricaby
Rincon
Rincon, North
Ross
San Roman
Sun

Yturria

VICTORIA COUNTY

Helen Gohike, S.W.
Keeran, North
Marcado Creek
McFaddin
Meyersville
Placedo

WEBB COUNTY

Aquiles/Glen Martin
Big Cowboy
Bruni, S.E.
Cabezon
Carr Lobo
Davis
Hirsch
Juanita
Las Tiendas
Nicholson
O'Ham
Olmitos
Tom Walsh

WHARTON COUNTY

Black Owl
Chile Vieja
La Sal Vieja
Paso Real
Tenerias
Willamar

WILLACY COUNTY

Benavides
Davis, South
Jennings/Jennings, West
Lopeno
M&F
Pok-A-Dot

ZAPATA COUNTY

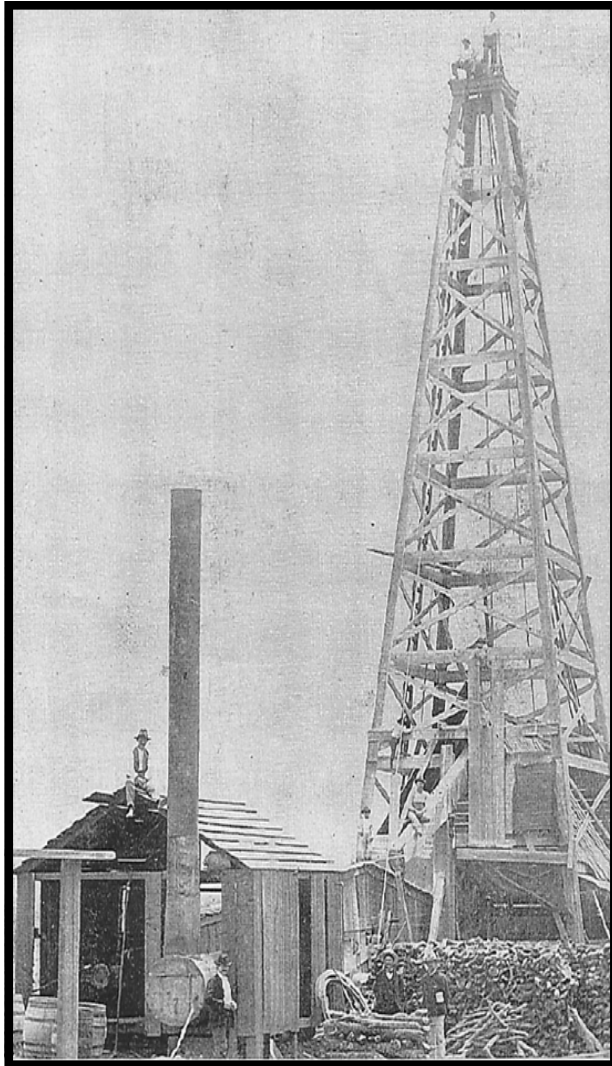
Benavides
Davis, South
Jennings/Jennings, West
Lopeno
M&F
Pok-A-Dot
ZAVALA COUNTY
El Bano

<p>Call Coastal Bend Geological Library, Lettie: 361-883-2736 I log -- \$10 each, 5-10 logs \$9 each and 10 + logs \$8.00 each – plus postage</p>

OIL MEN
TALES FROM THE SOUTH TEXAS OIL PATCH
DVD
MEMBER PRICE \$25
NON-MEMBER \$30



To Order DVD
Sebastian Wiedmann
swiedmann.geo@gmail.com
If mailed add \$5.00



Corpus Christi Geological Society
C/O Javelina Press
P. O. Box 60181
Corpus Christi, TX 78466

Order Form

Mail order form for Wooden rigs-Iron Men. The price is \$75 per copy, which includes sales tax, handling, and postage

Name _____

Address _____

City, State, Zip _____

No. of books _____ Amount enclosed _____

Send to Corpus Christi Geological Society Book Orders

P. O. Box 60181

Corpus Christi, TX. 78466 Tax exempt# if applicable _____

Wooden Rigs—Iron Men

The Story of Oil & Gas in South
Texas

By Bill & Marjorie K. Walraven

Published by the
Corpus Christi Geological Society

TOG Exploration LLC

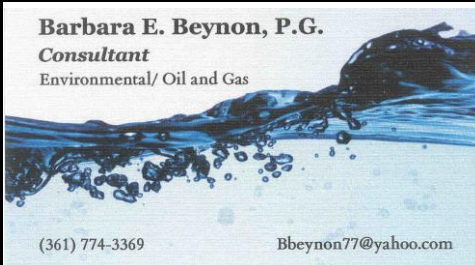
David Becker
Geologist
600 Leopard St. Ste 706
Corpus Christi, TX 78401

dkbecker1137@sbcglobal.net

361-884-3613

Barbara E. Beynon, P.G.

Consultant
Environmental/ Oil and Gas



(361) 774-3369

Bbeynon77@yahoo.com



Dawn S. Bissell
Geoscientist

Advent Geoscience Consulting, LLC
Corpus Christi, TX 78411

Phone: 361-960-2151

Email: bissells@swbell.net

MUD LOGGING SERVICE



Since 1961

MIKE BULLARD

(361) 221-9717 Office
(361) 522-1245 Cell
E-Mail md_bullard@sbcglobal.net

(361) 211-9715 Fax
P.O. Box 1011
Kingsville, TX 78363



Elizabeth Chapman
Business development/marketing

flamingo
SEISMIC SOLUTIONS

11777 Katy Freeway, Ste 570 | Houston, TX 77079
office: 281.977.7432 ext 109 fax: 281.829.1788
cell: 713.817.4232 email: elizabeth@flamingoseismic.com

www.flamingoseismic.com

James L. Claughton
CONSULTING GEOLOGIST

Office | 361-887-2991

Fax | 361-883-4790

Cell | 361-960-2014

clausie@sbcglobal.net

615 North Upper Broadway

Suite 1935

Corpus Christi, Texas

78401-0779

Jim Collins
Geoscientist



361.537.4034

jim@gulfcoastgas.com

Imagine Resources, LLC

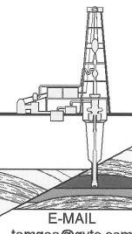
Frank G Cornish
President/Consulting Geologist

5103 Turnabout Lane
Austin, Tx 78731

361-563-9184

frank.cornish@gmail.com

TOM DAVIDSON
GEOLOGIST



28550 IH-10 WEST SUITE #4
BOERNE, TEXAS 78006

BUS: (210) 844-8963

RES: (830) 981-5883

FAX: (830) 981-5567

CEL: (210) 844-8963

E-MAIL
tomgeo@gvtc.com

SEIMAX
TECHNOLOGIES

Sara Davis
Director of Marketing & Business Development

4805 Westway Park Blvd., Houston, TX 77041
p: 832.554.4301 d: 832.554.4314 c: 713.256.8737
sdavis@seimaxtech.com

Geotech
Logging Services, LLC

Brian Desaulnier
Owner / President
512.923.2059
brian@gtls.us

P.O. Box 305
Red Rock, TX 78662

Office: 512.308.8200
Fax: 830.839.4832

www.geotechloggingservices.com

Leighton L. Devine
Exploration Geologist

SUEMAUR

Experience. Expertise. Exploration.

p. 361-884-8824 x1103
c. 361-510-8872
ldevine@suemaur.com

Suemaur Exploration & Production, LLC
539 North Carancahua, Suite 1100
Corpus Christi, TX 78401

Tommy Dubois
Geologist

2627 CR 312
Yoakum, Texas 77995

361-215-0223

tvdubois@yahoo.com



FRONTERA EXPLORATION CONSULTANTS

Geological and Geophysical Interpretation
SMT Kingdom™ Workstation

THOMAS E. EWING, PH.D.
AAPG CPG #4538; Texas Lic. Geol. #1320

19240 Redland Road, Suite 250, San Antonio, TX 78259
(210) 494-4526; (210) 824-6423 FAX
tewing@fronteraexploration.com

Since
1982

FOX ENVIRONMENTAL SERVICES, LLC

PLANNING | PERMITTING | REAL ESTATE MARKETING MAPS

LAURA M. FOX

LAURA@FOXENVIRONMENTALSERVICES.COM

P.O. BOX 745
ROCKPORT, TEXAS 78381

361.319.3119



MATTHEW FRANEY
Consulting Geologist

AAPG Certified Petroleum Geologist #6342
Texas Licensed Professional Geologist #1169

FRANEY OIL OPERATIONS, INC.

600 Leopard Street, Suite 904 361-563-6327
Corpus Christi, TX 78401 mfraney57@att.net

Enrique (Rick) Garza
Operation Supervisor
US Land



Geoscience
Solutions

Rick.Garza@GlobalGeophysical.com
DIRECT +1 713-908-7428
WORKS +1 361-701-6480
FAX +1 713-908-7928
13927 South Gessner Road
Missouri City, Texas 77489 USA
www.GlobalGeophysical.com

GISLER BROTHERS LOGGING CO., INC.

P.O. BOX 485
106 E. MAIN

RUNGE, TX 78151



Wes Gisler

Bus. (830) 239-4651
Mobile (361) 676-1369

wes@gislerbrotherslogging.com

YOUR CARD COULD BE HERE!!!

\$30 FOR 10 ISSUES AD. PRICES PRO-RATED. EMAIL ROBBY AT ROBERT.STERETT@GMAIL.COM.



RAY GOVETT, Ph. D.
CONSULTING GEOLOGIST
 361-855-0134

Robert Graham
 President
 grexploration@gmail.com
 Phone 361-882-7681
 Fax 361-882-7685
 Cell 361-774-3635



Exploratory Prospects & Production Development

Mail:
 P. O. Box 1843
 Corpus Christi, Texas
 78403-1843
Office:
 606 N. Carancahua, Ste. 610
 Corpus Christi, Texas
 78401-0634



HART EXPLORATION, LLC.

RICK HART
 Geologist / Owner

P.O. Box 3576
 Bandera, Texas 78003
 Cell: 512-626-3053
 Email: hartexploration@aol.com

RIVIERA EXPLORATION, LLC

H. TONY HAUGLUM
President

600 LEOPARD ST.
 SUITE 1704
 CORPUS CHRISTI
 TEXAS 78401
 PHONE 361.884.1811
 FAX 361.884.8071
 E-MAIL THAUGLUM@SWBELL.NET

Chuck Henry
Vice President, Geosciences



T 713.623.7139 M 713.501.9575
 chenry@frostwoodenergy.com
 frostwoodenergy.com

6566 Katy Freeway, Suite 100
 Houston, TX 77024
Moving offices on Aug 15th

Brent F. Hopkins
President and Chief Executive Officer

SUEMAUR

Experience. Expertise. Exploration.

p. 361-884-8824 x1101
 c. 361-215-4855
 bhopkins@suemaur.com
 Suemaur Exploration & Production, LLC
 539 North Carancahua, Suite 1100
 Corpus Christi, TX 78401

James R. Jones
Geologist

7434 Long S Drive
Corpus Christi, TX 78414
361-779-0537
jrjones5426@aol.com



EOG Resources, Inc.
 539 N. Carancahua
 Suite 900
 Corpus Christi, TX 78401-0908
 Direct: (361) 887-2681

Randy Lambert
Geological Advisor

Fax: (361) 844-1546
 randy_lambert@eogresources.com

CURTIS R. MAYO
 GEOLOGICAL CONSULTANT

Reserve Analysis **Prospect Evaluation**
Expert Witness **Prospect Generation**

Fredericksburg, Texas 78624
 Office: 830.992.2938 Cell: 830.765.0628 E-Mail: cmayo@ctesc.net



PATRICK J. McCULLOUGH [President]
 patrickm@emeraldbayexp.com

311 Saratoga Boulevard Corpus Christi, Texas 78417
 361.852.6195 [o] 361.852.6676 [f] 361.876.7881 [c]



Armando Medina
Owner / Geologist

8610 N. New Braunfels #703 • San Antonio, TX 78217
 (210) 538-2170 • amedina@valorexploration.com



J. Mark Miller
 President

Phone (361) 883-7700
 Fax (361) 883-7701
 mark@millersmithgas.com
 545 N. Upper Broadway
 Suite 400
 Corpus Christi, Texas 78476

Wellhead Gas Marketing



www.lmkr.com

mmixon@lmkr.com
 P: +1 281 495 5657
 D: +1 281 848 3310
 C: +1 713 419 8918
 F: +1 281 879 0135

Mark Mixon
 Account Manager

LMK Resources Inc.
 6051 North Course Drive, Suite 300,
 Houston, TX 77072, USA

Mailing Address
 615 Leopard, Ste. 640
 Corpus Christi, Texas 78401-0641
 361.882.7888 phone
 361.882.7889 fax
 361.946.2581 mobile

Contact Address
 1701 Southwest Parkway, Ste. 109
 College Station, Texas 77840
 866.946.2581 phone
 866.946.2580 fax

pmueller@muelrexp.com
 www.muelrexp.com



J. Paul Mueller, Jr.
 President



Daniel J. Neuberger
 Geologist and President

Austin Office:
 712 Windsong Trail
 West Lake Hills, Texas 78746

Office (361) 548-7723
 Home (512) 306-1223
 dan@neuoilandgas.com

Patrick Nye
 President
 patrick@nyexp.us

Office: (361) 452-1455
 Cell: (361) 658-1089
 Res: (361) 238-2146

NYE
 Exploration & Production, LLC

802 N. Carancahua, Suite 1840
 Frost Bank Plaza
 Corpus Christi, TX 78401
 www.nyexp.us



BRIAN E. O'BRIEN

510 Bering Drive
 Suite 600
 Houston, Texas 77057

Main: 713-783-4883
 Fax: 713-783-3039
 Res: 713-784-7911
 Cell: 713-899-5164
 E-mail: bobrien@saxetpetroleum.com



Ken Oriaska
 Account Manager

281-497-8440
 Direct: 281-249-5051
 Fax: 281-558-8096
 Cell: 832-455-1818
 e-mail: koraska@geotrace.com
 12141 Wickchester Lane, Suite 200
 Houston, Texas 77079
 www.geotrace.com

YOUR CARD COULD BE HERE!!!

\$30 FOR 10 ISSUES AD. PRICES PRO-RATED. EMAIL ROBBY AT ROBERT.STERETT@GMAIL.COM.



Herradura Petroleum, Inc.

JEFF OSBORN
Geologist

711 N. Carancahua, Ste. 1750
Corpus Christi, Texas 78475
e-mail: jcff@herradurapetroleum.com

Office: 361-884-6886
Fax: 361-884-9102
Cell: 361-537-2349



RICHARD E. PAIGE
CHIEF PROJECT GEOLOGIST

539 N. CARANCAHUA, SUITE 1100
CORPUS CHRISTI, TEXAS 78401-0999

OFF: (361) 884-8824 (ext. 1121)
CELL: (361) 563-1517
HOME: (361) 887-1912
rpaige@suemaur.com

Richard M. Parker

Consulting Geologist
Adjunct Professor – Geosciences
Texas A&M University - Kingsville
Registered State of Texas Board of Professional Geoscientists
License # 6056

12802 Max Rd.
Brookside Village, Texas 77581
Email: rparkstar@sbcglobal.net
Email: Richard.Parker@tamuk.edu

713-724-4380 Cell 1
713-206-3158 Cell 2
281-412-0745 Home
361-593-4072 A&M



Beth Priday
Geologist

615 North Upper Broadway
Suite 525, WF168
Corpus Christi, Texas 78401
Bus (361) 882-3046
Fax (361) 882-7427

Mobile: (361)443-5593 • E-mail: bpriday@virtexoperating.com

Minerals Exploration and Mining
Uranium In Situ Leach

Richard M. Rathbun, Jr.
Certified Professional Geologist 9544 / AIPG

921 Barracuda Pl.
Corpus Christi, Texas 78411

(361) 903-8207
rathbunassoc@msn.com



Barry J. Rava
President

Mobile: 281-235-7507
Office: 713-621-7282

barry@icarusog.com
www.icarusog.com

P.O. Box 820253
Houston, TX 77282-0253

Deliveries
1710 S. Dairy Ashford Rd., Ste. 202
Houston, TX 77077

First Rock, Inc.

RGR Production

First Rock I, LLC

Gregg Robertson

600 Leopard St., Suite 1800
Corpus Christi, TX 78401
361-884-0791

Email
firstrockinc@msn.com
Cell
210-260-0300



Wireline Services

Weatherford International Ltd.
401 E. Sonterra Blvd., Suite 1
San Antonio, Texas 78258
USA

Sam Roach
US Gulf Coast Wireline Sales

+1.210.930.7588 Direct
+1.210.930.7610 Fax
+1.210.241.2463 Mobile

sam.roach@weatherford.com
www.weatherford.com



Alvin Rowbatham
Sales, Gulf of Mexico

Main +1 713 789 7250
Direct +1 281 781 1065

Fax +1 713 789 7201
Mobile +1 832 372 2366

alvin.rowbatham@iongeo.com

2105 CityWest Blvd. | Suite 900
Houston, TX 77042-2839 USA



Doug Sartoris

Exploration Geologist / Managing Partner

800 North Shoreline Blvd.
Suite 2570 South
Corpus Christi, TX 78401

Office: 361-884-1130
Cell: 361-548-1130
doug@dsxenergy.com



AND ASSOCIATES, LTD.
GEOLOGICAL CONSULTING / SURFACE LOGGING SERVICES

P.O. Box 61150
Midland, TX 79711

4833 Saratoga #624
Corpus Christi, TX 78413

P.O. Box 2993
Rock Springs, WY 82902

TOM SELMAN
selmanlog.com
tselman@selmanlog.com

Ofc. (432) 563-0084
(800) 578-1006
Cell (432) 288-2259



Petrophysics, Inc.
Velocity Surveys • Synthetics • Sonic Log Data

P.O. Box 863323
Plano, Texas 75086

713.560.9733
jsmith@petrophysics.com
www.petrophysics.com

Joe H. Smith
President

Crossroads Exploration

Gloria D. Sprague
Geologist

189 North First Street, Suite 111
Timpson, Texas 75975

Office: 936-254-3600
Mobile: 936-488-9428

gsprague4532@att.net



ROBBY STERETT
GEOLOGIST

P.O. Box 907
CORPUS CHRISTI, TEXAS 78403

OFFICE (361) 887-2981
CELL (361) 739-5618
EMAIL RSTERETT@DAHCO.US

Charles A. Sternbach, Ph.D.
President

Star Creek Energy Company
Oil and Gas Exploration

800 Wilcrest Drive, Suite 230
Houston, Texas 77042
office: 281.679.7333
cell: 832.567.7333
carbodude@gmail.com



www.starcreekenergy.com

THOMAS W. SWINBANK
CERTIFIED PETROLEUM GEOLOGIST
PRESIDENT

STRIKE OIL & MINERALS CORP.
P.O. Box 1339
GEORGETOWN, TEXAS 78627

PHONE/FAX 512-863-7519
HOME 512-863-7903
CELL 512-876-9595

Dennis A. Taylor
President and Chief Geologist
dennis@amshore.com

Off: (361) 888-4496
Fax: (361) 888-4588
Direct Line: (361) 844-6728
Cell: (972) 672-9916



AMERICAN SHORELINE, INC.

AMSHORE US WIND, LLC

802 N. Carancahua Street, Suite 1250
Corpus Christi, Texas 78401-0019
www.amshore.com

Environmental

Exploration & Production

JEANIE TIMMERMANN

GEOSCIENTIST

TX LICENSE #2289

7214 Everhart #9
Corpus Christi, TX 78413

(361) 991-7451
jtimmermann74@msn.com

YOUR CARD COULD BE HERE!!!

\$30 FOR 10 ISSUES AD. PRICES PRO-RATED. EMAIL ROBBY AT ROBERT.STERETT@GMAIL.COM.



Davis Petroleum Corp.

www.davispetroleumcorp.com

Jim Travillo
Senior Geoscientist

1330 Post Oak Boulevard
Suite 600
Houston, Texas 77056

Direct: 713.439.6773
Main: 713.826.7766
Fax: 713.826.7775
Cell: 713.823.9332

jtravillo@davcos.com



WILLIAM A. WALKER, JR.
Certified Petroleum Geologist
bwalker@stalkerenergy.com

1717 West 6th Street, Ste. 230 • AUSTIN, TX 78703
2001 Kirby Dr., Ste. 950 • HOUSTON, TX 77019

AUSTIN

512.457.8711
cell: 512.217.5192
fax: 512.457.8717

HOUSTON

713.522.2733
cell: 512.217.5192
fax: 713.522.2879

SEBASTIAN P. WIEDMANN
GEOSCIENTIST

4425 DRIFTWOOD PLACE
CORPUS CHRISTI, TEXAS 78411
swiedmann.geo@gmail.com
MOBILE (361) 946-4430



Dave Willis
Onshore Sales

Main +1 713 789 7250
Direct +1 281 781 1035
Mobile +1 281 543 6189
Fax +1 713 789 7201
dave.willis@iongeo.com

2105 CityWest Blvd. | Suite 900
Houston, TX 77042-2839 USA

ROLF WOODS
Exploration Geologist



500 N. Water St., Ste. 1100S — CORPUS CHRISTI, TX 78401-0236
Work: (361) 883-7464 • Fax: (361) 883-3244 • Cell: (361) 947-9200
e-mail: rwwoods@gmail.com



MILLENNIUM

PETROCAPITAL CORPORATION

www.millenniumpetrocapital.com

SEEKING DEALS

- 3-D Seismic Based Prospects in the Gulf Coast Region of Texas
- Conventional or Tight Oil Sands Only
- Leased or Unleased
- Operations Preferred



The Millennium family of companies are a privately held oil and natural gas exploration and production enterprise founded in 2006 and are headquartered in San Antonio, Texas.

Geographically focused, Millennium specializes in developing and producing reserves in the Gulf Coast regions of Texas. Our team aggressively pursues large working interest positions with operations in prospects with strong geological merit, well control and reliable seismic interpretations.

To present your prospect for consideration, please email a summary and/or any associated confidentiality documents to our exploration team:

geology@millenniumpetrocapital.com

