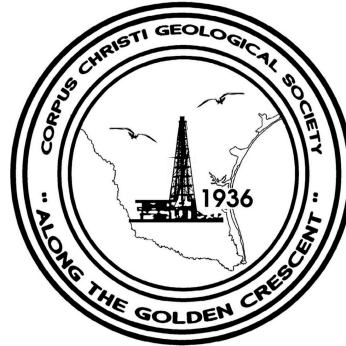


# **BULLETIN**

## **Corpus Christi Geological Society**



and

## **Coastal Bend Geophysical Society**



**October  
2018  
ISSN 0739 5620**

Compliments of

# American Shoreline, Inc.



Specializing in  
Oil & Gas Exploration  
& Wind Energy

802 N. Carancahua  
Frost Bank Plaza, Suite 1250  
Corpus Christi, Texas 78401  
(361) 888-4496

[www.amshore.com](http://www.amshore.com)



# Table of Contents

Officers, Committees and Chairpersons for CCGS/CBGS.....	2&3
CCGS/CBGS Joint Calendar of Meetings & Events.....	4&5
CCGS President’s Letter.....	6
CBGS Golf Tournament.....	7
CBGS President’s Letter.....	8
Luncheon Meeting Announcement.....	12
Scholarship Application Information.....	14
Energy Auxiliary Information.....	19
“A Wild Goose Chase on the Texas Gulf Coast”—Dennis Taylor.....	21
CCGS Papers available for purchase at the Bureau of Economic Geology.....	37
Geo Link Post.....	38
Type Logs of South Texas Fields.....	39
Order Oil Men DVD.....	40
Wooden Rigs Iron Men.....	41
Professional Directory.....	42



## CORPUS CHRISTI GEOLOGICAL SOCIETY

P.O. BOX 1068\* C.C.TX. 78403

2018-2019

[www.ccgeo.org](http://www.ccgeo.org)

### OFFICERS

President	Frank Cornish	361-883-0923	<a href="mailto:frank.cornish@gmail.com">frank.cornish@gmail.com</a>
President Elect	Austin Nye	361-452-1435	<a href="mailto:austin@nyexp.us">austin@nyexp.us</a>
Vice President	Casey Mibb	361-726-1092	<a href="mailto:clmibb@yahoo.com">clmibb@yahoo.com</a>
Secretary	Randy Bissell	361-885-0110	<a href="mailto:randyb@headingtonenery.com">randyb@headingtonenery.com</a>
Treasurer	Sebastian Wiedmann	361-946-4430	<a href="mailto:swiedmann.geo@gmail.com">swiedmann.geo@gmail.com</a>
Past President	Austin Nye	361-452-1435	<a href="mailto:austin@nyexp.us">austin@nyexp.us</a>
Councilor I	Rick Paige	361-884-8824	<a href="mailto:rpaige716@gmail.com">rpaige716@gmail.com</a>
Councilor II	BJ Thompson	361-242-3113	<a href="mailto:william.thompson426@gmail.com">william.thompson426@gmail.com</a>

### AAPG DELEGATE

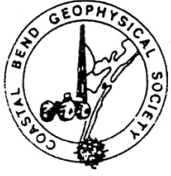
### EDITORS

Bulletin Editor	Marian Wiedmann	361-855-2542	<a href="mailto:wiedgulf@gmail.com">wiedgulf@gmail.com</a>
Bulletin Tech. Editor	Jeanie Timmermann	361-883-1492	<a href="mailto:jeanie@industrialcorrosion.net">jeanie@industrialcorrosion.net</a>
Web Master	Josh Pollard	361-654-3100	<a href="mailto:support@interconnect.net">support@interconnect.net</a>

### GEOLOGICAL SOCIETY COMMITTEES & CHAIRPERSONS

**MEMBERS PLEASE NOTE COMMITTEES CONTINUE TO FUNCTION WITHOUT A NAMED CHAIR, ALL ARE WELCOME TO ANY COMMITTEE THAT SUITES YOUR INTEREST**

Advertising/Bus. Cards Arrangements	Robby Sterett Wes Gisler & Will Graham	361-739-5618 830-239-4651 361-885-0110	<a href="mailto:robert.sterett@gmail.com">robert.sterett@gmail.com</a> <a href="mailto:arrangements@ccgeo.org">arrangements@ccgeo.org</a> <a href="mailto:willg@headingtonenery.com">willg@headingtonenery.com</a>
Continuing Education	<b>OPEN</b>		
Education	Dawn Bissell	361-960-2151	<a href="mailto:bissells@swbell.net">bissells@swbell.net</a>
Scholarship Program	Dawn Bissell	361-960-2151	<a href="mailto:bissells@swbell.net">bissells@swbell.net</a>
Fishing Tournament	Leighton Devine	361-882-8400	<a href="mailto:ldevine@suemaur.com">ldevine@suemaur.com</a>
History	<b>OPEN</b> (Ray Govett)	361-855-0134	<a href="mailto:ray30@hotmail.com">ray30@hotmail.com</a>
Membership	Dorothy Jordan Randy Bissell	361-885-0110 361-885-0113	<a href="mailto:dorothyj@headington.com">dorothyj@headington.com</a> <a href="mailto:randyb@headington.com">randyb@headington.com</a>
Type Logs	<b>OPEN</b>		



**COASTAL BEND GEOPHYSICAL SOCIETY**  
**P.O. BOX 2741 \*C.C. TX. 78403**  
**2017-2018**

**OFFICERS**

President	Dr. Subbarao Yeliseti	361-593-4894	<a href="mailto:subbarao.yeliseti@tamuk.edu">subbarao.yeliseti@tamuk.edu</a>
Vice President	Lonnie Blake	361-883-2831	<a href="mailto:lonnie_blake@eogresources.com">lonnie_blake@eogresources.com</a>
Secretary/Treasurer	Matt Hammer	361-888-4792	<a href="mailto:mhammer@royalcctx.com">mhammer@royalcctx.com</a>
Golf Chairman	Lonnie Blake	361-883-2831	<a href="mailto:lonnie_blake@eogresources.com">lonnie_blake@eogresources.com</a>
Scholarship Chairman	Ed Egger	361-947-8400	<a href="mailto:edegger69@gmail.com">edegger69@gmail.com</a>
Education	Dr. Robert Schneider	361-593-3589 361-447-2381	<a href="mailto:Robert.schneider@tamuk.edu">Robert.schneider@tamuk.edu</a>

---

**Visit the geological  
web site at  
[www.ccgeo.org](http://www.ccgeo.org)**

## CCGS/CBGS JOINT MEETING SCHEDULE 2018-2019

September 2018							October 2018							November 2018						
S	M	T	W	Th	F	S	S	M	T	W	Th	F	S	S	M	T	W	Th	F	S
						1	1	2	3	4	5	6					1	2	3	
2	3	4	5	6	7	8	7	8	9	10	11	12	13	4	5	6	7	8	9	10
9	10	11	12	13	14	15	14	15	16	17	18	19	20	11	12	13	14	15	16	17
16	17	18	19	20	21	22	21	22	23	24	25	26	27	18	19	20	21	22	23	24
23	24	25	26	27	28	29	28	29	30	31				25	26	27	28	29	30	
30																				

Wednesday Sept. 19<sup>th</sup> at 5:30 BBQ Kickoff at Hoegemeyers Barbeque Barn. Meet/greet our special guest, Dr. Satinder Chopra\*  
 \*One of the most widely published geoscientists of our day.

To be announced

December 2018							January 2019							February 2019						
S	M	T	W	Th	F	S	S	M	T	W	Th	F	S	S	M	T	W	Th	F	S
						1		1	2	3	4	5						1	2	
2	3	4	5	6	7	8	6	7	8	9	10	11	12	3	4	5	6	7	8	9
9	10	11	12	13	14	15	13	14	15	16	17	18	19	10	11	12	13	14	15	16
16	17	18	19	20	21	22	20	21	22	23	24	25	26	17	18	19	20	21	22	23
23	24	25	26	27	28	29	27	28	29	30	31			24	25	26	27	28		
30	31																			

No meeting

11:30am – 1:00pm  
 Speaker: Hongliu Zeng research scientist Bureau of Eco. Geology, Jackson School of Geosciences, The Univ. of Tx. Austin. “Seismic Sedimentology Talk”

To be announced

## CCGS/CBGS Joint Meeting Schedule 2018-2019

March 2019							April 2019							May 2019						
S	M	T	W	Th	F	S	S	M	T	W	Th	F	S	S	M	T	W	Th	F	S
					1	2		1	2	3	4	5	6				1	2	3	4
3	4	5	6	7	8	9	7	8	9	10	11	12	13	5	6	7	8	9	10	11
10	11	12	13	14	15	16	14	15	16	17	18	19	20	12	13	14	15	16	17	18
17	18	19	20	21	22	23	21	22	23	24	25	26	27	19	20	21	22	23	24	25
24	25	26	27	28	29	30	28	29	30					26	27	28	29	30	31	
31																				

No meeting
To be announced
To be announced

## Calendar of Meetings and Events

### Calendar of Area Monthly Meetings

- Corpus Christi Geological/Geophysical Society..... Third Wed.—11:30a.m.
- SIPES Corpus Christi Luncheons..... Last Tues.—11:30a.m.
- South Texas Geological Society Luncheons..... Second Wed—noon San Antonio
- San Antonio Geophysical Society Meetings..... Fourth Tuesday
- Austin Geological Society ..... First Monday
- Houston Geological Society Luncheons..... Last Wednesday
- Central Texas Section of Society of Mining, Metallurgy & Exp..... 2<sup>nd</sup> Tues every other month in San Antonio



## CCGS PRESIDENT'S LETTER

Well, a new year has started for the CCGS and we had a great opening meeting/BBQ. No talks, just food, fellowship and brews. I'm not sure how the turnout was historically, but it was good for us these days – It was a good mix of young and old. I think many older members will remember the days when the old members back then held our meetings at the Moravian Hall. Many of us youngsters at that time came in with the 70's boom precipitated by the oil embargo imposed on the US by the Saudi's et al because of the US support for Israel. We had all waited in the long lines for gasoline, and I thought I was too cool with my Mitsubishi Dodge Colt that got 34 MPG! - stick shift, no AC, hand roll down windows, a RADIO (no FM), and brand new off the lot; \$2001 in 1973. My gift for graduation., thanks Mom and Dad. No student loan debt to payoff; because of working (I ground up drill cuttings and Xray'd them for a clay project at LSU), some scholarship money (Getty Oil), and mostly Mom and Dad's \$\$\$. Anyway, we all came in together; we grew up together here in CC, and never thought we would be the old geezers. Back then we finally took control of the CCGS and brought in REAL music at our parties with Aloha Dave and the Tourists playing those great 60-70' hits that even my kids like.

And so it will be for all our young geologists, when you get your hands on the wheels to drive this CCGS. Our society is great because geologists are just too much fun to be with. And CCGS has benefitted from the sacrifice of time and effort by those that continue today to support this organization. My job is easy because I am surrounded by experienced people that pay attention to detail and have some historic memory of things we've done. So my thanks go out to the CCGS/CBGS boards for all the work that goes on behind the scenes. I include former board members and all the committee members as well. Thank you all for making this fun and easy for me.

Those of you that will inherit this society will put your own mark on it. You will replace the boring things we do with events/parties etc. that are more attuned to your generation, as we did when we came aboard. Your enthusiasm and new ideas will help this group grow with the changing times. As we leave the paper world and embark on the digital world, you will come up with plans we cannot imagine. And we will still be here to help guide you at least for a little while, but grandchildren, retirement, etc. all beckon us with other activities. You can take the geologist out of the society, but you can't take the geologist out of us.

Frank G Cornish

Benevolent Overlord





# CBGS GOLF TOURNAMENT

***Proceeds go to Scholarship Fund***



Coastal Bend Geophysical Society

NorthShore Country Club

October 5, 2018

12:30 p.m. Shotgun Tee Time

Sponsorships Available

Four-Man Scramble/\$100 per Golfer

100 Player Limit \* Sign up Early

Contact: Lonnie Blake – [Lonnie\\_blake@eogresources.com](mailto:Lonnie_blake@eogresources.com)

361 876 6614

Name \_\_\_\_\_

Email \_\_\_\_\_

Company Name \_\_\_\_\_

Address \_\_\_\_\_

City, State, Zip \_\_\_\_\_

Phone \_\_\_\_\_

\_\_\_\_ Yes, Please Place on a Team

\_\_\_\_ I want to be on a Team with: (list below)

Player 2: \_\_\_\_\_

Player 3: \_\_\_\_\_

Player 4: \_\_\_\_\_

\_\_\_\_\_ \$100 per Golfer

\_\_\_\_\_ \$400 per Team (4 players)

\_\_\_\_\_ Sponsorship Total

\_\_\_\_\_ **TOTAL AMOUNT DUE**

**PAYMENT INFORMATION**

\_\_\_\_ Check Enclosed

Make Checks payable to:

Coastal Bend Geophysical Society

Matt Hammer

500 N. Shoreline Blvd Ste. 807,

Corpus Christi, Texas 78401

## Sponsorships

# \_\_\_ Golf Beverage Cart \$700 ea. \_\_\_\_\_

# \_\_\_ Golf Holes (18) \$200 ea. \_\_\_\_\_

# \_\_\_ Longest Drive  
(2) \$100 ea. \_\_\_\_\_

# \_\_\_ Closest to the Pin  
(2) \$100 ea. \_\_\_\_\_

Door Prize Sponsor \_\_\_\_\_

**Total Sponsorship \$ \_\_\_\_\_**

## NorthShore Country Club

801 E. Broadway St.

Portland, TX 78374

Entry Fee Includes:

- Green Fees
- Range Balls
- Carts
- Beverages on the Golf Course
- Door Prizes
- Dinner Buffet



## **CBGS President's Letter**

### **CBGS Board 2018-2019**

Dr. Subbarao Yelisetti- President  
Lonnie Blake- Vice President  
Matt Hammer- Secretary/ Treasurer  
Dr. Robert Schneider- Continuing Education  
Lonnie Blake- Golf Chair  
Ed Egger- Scholarship Chair

### **CBGS Scholarships**

The board awarded three scholarships of \$2,000 each to undergraduate geophysics majors from Texas A&M University-College Station, University of Houston and Texas A&M University-Kingsville.

The following criteria is followed in awarding the scholarships.

1. Must be a citizen of the USA
2. Must have declared Major Geophysics at the main campus of the receiving university
3. Must have GPA 3.0
4. Must be in good standing with the school
5. Must make effort to attend a Coastal Bend Geophysical Society Meeting in Corpus Christi Texas after being awarded a scholarship to be recognized by the society.

### **News**

- At the time of writing this report, the U.S. crude futures have averaged over \$66.64 a barrel in 2018, as opposed to an average of \$50.85 a barrel in 2017 and \$43.47 a barrel in 2016, as reported by Scott DiSavino on reuters.com. This is going to increase to \$71 for the remainder of 2018 and about \$68 for 2019.
- Analysts at Simmons & Co predict that the average oil and natural gas rig count would rise from 876 in 2017 to 1,031 in 2018, 1,092 in 2019 and 1,227 in 2020.
- According to U.S. Energy Information Administration (EIA) forecasts, the U.S. crude oil production is expected to rise by 840,000 bpd to 11.5 million bpd in 2019. EIA

continued on page 9

forecasts that U.S. crude oil production will average 10.7 million b/d in 2018, up from 9.4 million b/d in 2017.

- At the time of writing this report, the U.S. dry natural gas production was 82.2 billion cubic feet per day (Bcf/d) in August, up 0.7 Bcf/d from July. EIA dry natural gas forecasts indicate an average 81.0 Bcf/d in 2018, up by 7.4 Bcf/d from 2017. These forecasts show an increase up to 84.7 Bcf/d in 2019.

### **CBGS Business**

CBGS currently has 60 active members, 4 honorary members, and 60 student members.

### **CBGS workshops/talks**

- As part of the annual Kickoff Bar-B-Q, CBGS hosted Dr. Satinder Chopra on Sep 19, 2018 at the EOG conference center. His talk was entitled “Seismic reservoir characterization of Utica-Point Pleasant shale with efforts at quantitative interpretation – a case study”.
- CBGS offered a Geophysics workshop on April 20<sup>th</sup> in EOG conference center with the following talks.

Talks:

1. IHS – What’s new/coming in the Kingdom Software Suite
2. Tad Smith – SEG Distinguished Lecturer: Seismic Petrophysics
3. CGG/Hampson Russell: Reservoir Property Prediction with Seismic

CBGS is looking forward to offer many such workshops in the future. Topic/speaker suggestions are welcome. Email your suggestions to [Lonnie\\_Blake@eogresources.com](mailto:Lonnie_Blake@eogresources.com) or [Subbarao.Yelisetti@tamuk.edu](mailto:Subbarao.Yelisetti@tamuk.edu)

### **Golf Tournament**

CBGS organized its annual **Golf Tournament** to fund its scholarship program on October 6, 2017 at Northshore Country Club. Raised \$1951 for the scholarship fund. 2018 Golf tournament will be in the first week of October. If you are interested in the Golf Tournament, please contact Lonnie Blake at 361-887-2665 or [Lonnie\\_Blake@eogresources.com](mailto:Lonnie_Blake@eogresources.com)

### **New Degree Tracks at TAMUK**

- Texas A&M University-Kingsville (TAMUK) started its first cohort of MS Petrophysics program in Fall 2018. If you are interested in joining this program in Spring 2019, please contact the graduate coordinator for MS in Petrophysics, Dr. Subbarao Yelisetti at [Subbarao.Yelisetti@tamuk.edu](mailto:Subbarao.Yelisetti@tamuk.edu).

continued on page 10

- **BS degree in Geophysics, Minor in Geophysics and Certification in Geophysics** offered at Texas A&M University-Kingsville from Fall 2017.

Interested students can contact Dr. Subbarao Yeliseti ([Subbarao.Yeliseti@tamuk.edu](mailto:Subbarao.Yeliseti@tamuk.edu)) for additional information.

### **Seismology class**

**PHYS 5385 Seismology** will be offered in Spring 2019 at Texas A&M University-Kingsville. This is available for the professional community as well as our students. You can sign up as a “transient” student in order to take classes without actually enrolling in the school. If anyone in the professional community wishes to sign up for this, please contact the instructor, Dr. Subbarao Yeliseti [Subbarao.Yeliseti@tamuk.edu](mailto:Subbarao.Yeliseti@tamuk.edu).

### **SEG Distinguished Lecture**

CBGS and TAMUK SEG student chapter organized 2018 SEG Distinguished Lecture in January, 2018. We wish to organize many more lectures in the future.

### **Education/Events**

#### **-SEG**

SEG annual meeting will be held in Anaheim, CA from Oct 14<sup>th</sup>-19<sup>th</sup>, 2018. Abstract due date is April 1<sup>st</sup>, 5 pm CDT. See <https://seg.org/Annual-Meeting-2018> for additional details.

See <https://seg.org/Education/Lectures/Distinguished-Lectures> for information about upcoming SEG distinguished lecture in Houston and other locations.

See <https://seg.org/Education/Lectures/Honorary-Lectures> for SEG honorary lecture locations in Texas.

#### **-AGU**

2018 Fall AGU annual meeting will be held in Washington, DC from December 10<sup>th</sup>-14<sup>th</sup>, 2018. <https://fallmeeting.agu.org/2018/>

### **Monthly Saying**

"Where oil is first found is in the minds of men" - Wallace Pratt (1885-1981).

continued on page 11

## Monthly Summary

Texas Oil and Gas Info	Current Month	Last Month	Difference	
<b>Texas Production</b>	<b>MMBO/BCF</b>	<b>MMBO/BCF</b>	<b>MMBO/BCF</b>	
Oil	106.5	108.4	-1.9	May
Condensate	10.9	12.2	-1.3	May
Gas	663.9	660.2	-3.7	May
	<b>Current Month</b>	<b>Yr to date - 2018</b>	<b>Yr to date - 2017</b>	
<b>Texas Drilling Permits</b>	1110	9440	8628	August
Oil wells	262	2422	2199	August
Gas wells	83	602	479	August
Oil and Gas wells	689	5764	5419	August
Other	14	94	123	August
<b>Total Completions</b>	783	7297	4945	August
Oil Completions	601	5690	3917	August
Gas Completions	123	1207	676	August
New Field Discoveries	1	16	22	August
Other	3	27	10	August

Subbarao Yeliseti  
President, CBGS



**CORPUS CHRISTI GEOLOGICAL SOCIETY  
COASTAL BEND GEOPHYSICAL SOCIETY**



**LUNCHEON MEETING  
ANNOUNCEMENT**

**OCTOBER 17, 2018**

- 
- Location:** Water Street Events (Previously the Seafood Company Restaurant) 300 Block N. Water Street, CC, TX 78401
- Student Sponsor:** Imagine Resources, Nye Exploration, Viper Exploration, Ltd.
- Bar Sponsor:** Sponsorship Opportunities Available!!!!!!
- Time:** 11:30 am Bar, Lunch follows at 11:45 am, Speaker at 12:00 pm
- Cost:** \$25.00 (additional \$10.00 surcharge without reservation; **NO SHOW** may be billed and non-RSVP attendees cannot be Guaranteed a lunch); FREE for students with reservation (discounted by our generous sponsors)!
- Reservations:** Please RSVP by 4PM on the FRIDAY before the meeting!  
E-Mail: [arrangements@ccgeo.org](mailto:arrangements@ccgeo.org)

Please note that luncheons RSVPs are a commitment to the Water Street Events and must be paid even if you can't attend the luncheon.

**SPONSORSHIPS OPPORTUNITIES ARE AVAILABLE!  
IF YOU WOULD LIKETO SPONSOR, PLEASE CONTACT US AT:  
[arrangements@ccgeo.org](mailto:arrangements@ccgeo.org)**

**Imagine Resources, LLC**



802 N. Carancahua, Suite 1840  
Frost Bank Plaza  
Corpus Christi, TX 78401  
[www.nyexp.us](http://www.nyexp.us)

**VIPER  
EXPLORATION,  
LTD**

continued on page 13

# **SUSTAINABLE MANAGEMENT OF THE NUBIAN AQUIFER WATER RESOURCES: INTEGRATED GEOPHYSICAL, REMOTE SENSING, AND GIS APPROACHES**

## **ABSTRACT**

The characterization and understanding of the geologic and hydrologic settings of, and the controlling factors affecting, freshwater water resources in arid and semi-arid environments are gaining increasing importance due to the challenges posed by natural (e.g., climate changes) and anthropogenic (e.g., population growth, unsustainable over-exploitation, pollution) factors. Over the Nubian transboundary (area: 2 million square kilometers in Egypt, Libya, Chad, Sudan) aquifer system, for example, such studies are often hindered by the inaccessibility of most of these environments, paucity of background information, and the high expenses and difficulties entailed in acquiring high quality field datasets. An integrated (geophysics, remote sensing, hydrogeology, geochemistry, numerical modeling, data mining, and GIS) approach is developed and applied to address the following objectives over the Nubian aquifer system: (1) investigate the terrestrial water availability and examine the nature of factors controlling this availability, (2) quantify depletion and recharge rates, and (3) Identify the role of various structural elements on groundwater accumulation and flow.

## **Biography**



Dr. Ahmed applies an integrated (geophysics, remote sensing, hydrogeology, modeling, GIS) approaches to investigate a wide range of geophysical, geological, hydrological, and environmental problems. Before attaining a Ph.D. in Geosciences at Western Michigan University in 2012, he received a M.Sc. (2009) and B.Sc. (2004) in Applied Geophysics from Suez Canal University, Egypt. He offers more than a decade of research and teaching experience and an excellent record of publication. His portfolio includes a number of awards and myriad articles published in professional national and international journals. Dr. Ahmed has collaborated in research funded, among others by, NASA, NATO, and the US state department. He has presented papers and served as a discussant at several national and international conferences and symposia.



# Corpus Christi Geological Society

## Spring 2019 Semester

(Must be postmarked by October 20, 2018)

## Scholarship Application Guidelines

1. Applicant must be majoring in Earth Sciences and enrolled for the award semester (i.e. Spring 2019) at a college in the local area. Applicant must be a member of the Corpus Christi Geological Society.
2. Fill out the application form clearly, completely, and sign it.
3. Short essay clearly explaining how this scholarship will assist you in achieving your geologic career goals and the reasons your application should be considered by the Committee.
4. One Faculty recommendation – Form attached.
5. Applicant must provide a transcript from current school. Please make sure it has your name on it. A web printout is acceptable.
6. **Applications must be postmarked by: October 20, 2018**  
Application packet may be emailed in a shareable format (i.e. pdf, docx, etc) to [bissells@swbell.net](mailto:bissells@swbell.net). *If you want to email your application – contact me for the order of documents submitted.*

Mail completed application to: Dawn Bissell, CCGS Scholarship Committee  
Chairman, 253 Circle Drive, Corpus Christi, TX 78411

*Send an email to [bissells@swbell.net](mailto:bissells@swbell.net) once you've mailed your application. We need **YOUR** email address. Award notifications will be sent via email!!!*

Please read requirements carefully and submit only complete applications.  
Applicants who have received a CCGS scholarship in the past are eligible to apply again.

Scholarships will be awarded based on merit and need. The award amounts may vary with the minimum individual award being \$500.

Award recipients will be recognized at the monthly luncheon on November 14, 2018 and are encouraged to attend.

Board Members:

Dawn Bissell      Frank Cornish - CCGS President      Brent Hopkins, Treasurer  
BJ Thompson

continued on page 15





# Corpus Christi Geological Society

Spring 2019 Semester

(Must be postmarked by October 20, 2018)

## Scholarship Application

Last Name: \_\_\_\_\_ First Name: \_\_\_\_\_

Mailing address: \_\_\_\_\_

City: \_\_\_\_\_ State: \_\_\_\_\_ Zip Code: \_\_\_\_\_

**Active Email:** \_\_\_\_\_

***Award notifications will be sent via email!!! Email [bissells@swbell.net](mailto:bissells@swbell.net) once you've submitted your application. I need **YOUR** email address.***

Daytime Phone: \_\_\_\_\_ Alternate Phone: \_\_\_\_\_

University Attending in Spring 2019: \_\_\_\_\_

Department: \_\_\_\_\_ Major: \_\_\_\_\_

Scholarship is for class level (circle one):

Freshman    Sophomore    Junior    Senior    Graduate Student

Total Hours Completed: \_\_\_\_\_ Overall GPA (Minimum 2.5): \_\_\_\_\_

Total Hours - Geology: \_\_\_\_\_ Geology GPA (Minimum 3.0) \_\_\_\_\_

Hours Planned for Scholarship Semester: \_\_\_\_\_ Geology Hours: \_\_\_\_\_

Will this scholarship be used toward field camp?      Yes      No

Prior recipient of CCGS Scholarship?      Yes      No

Are you a student member of CCGS?      Yes      No

(If no, email [membership@ccgeo.org](mailto:membership@ccgeo.org) with your contact information. Must be a member of CCGS.)

Applicant Signature \_\_\_\_\_ Date \_\_\_\_\_

Mail application, along with essay, faculty recommendation form, and transcript to:  
Dawn Bissell, CCGS Scholarship Committee Chairman 253 Circle Drive,  
Corpus Christi, TX 78411. Application **must be postmarked by October 20, 2018.**

**Email [bissells@swbell.net](mailto:bissells@swbell.net) once you've mailed your application.**

**Award notifications will be made via email!!!**

continued on page 16



# Corpus Christi Geological Society

Spring 2019 Semester

(Must be postmarked by October 20, 2018)

## Faculty Recommendation Form

Student's Last Name: \_\_\_\_\_ First Name: \_\_\_\_\_

University Currently Attending: \_\_\_\_\_

Faculty Name: \_\_\_\_\_

Do you recommend this student for this scholarship? Yes      No

Comments:

---

Faculty Signature


Date

---

University

Mail/Email **by October 20, 2018**.to Dawn Bissell, CCGS Scholarship Committee  
253 Circle Drive, Corpus Christi, TX 78411 Email [bissells@swbell.net](mailto:bissells@swbell.net)

## SPONSORS



**Nueces Energy, Inc.**  
*P.O. Box 252*  
*Corpus Christi, Texas 78403*  
*Office: (361) 884-0435*  
*Fax: (361)-654-1436*  
[www.nuecesland.com](http://www.nuecesland.com)

Nueces Energy, Inc. is a complete land services company in the business of providing professional landmen and project management to various energy related jobs primarily in the oil and gas industry.

With over 30 years of industry experience, we specialize in determining surface and subsurface ownership and negotiating and acquiring contracts, rights of way agreements, and easements to provide our clients with the legal right to explore and develop oil and gas resources. We provide a full service land company capable of managing any project no matter how large or small.



**THUNDER EXPLORATION, INC.**

Celebrating 30+ years of prospect generation and exploration in the following South Texas plays and trends.

Frio	San Miguel	Edwards
Jackson	Austin Chalk	Pearsall
Yegua	Eagle Ford	Sligo
Wilcox	Buda	Cotton Valley
Olmos	Georgetown	Smackover

Thunder is currently seeking non-operated working interest participation in projects and prospects.

Contact **Walter S. Light Jr.**  
**President/Geologist**  
 713.823.8288  
 EMAIL: [wthunderx@aol.com](mailto:wthunderx@aol.com)

**Headington Oil Company is now...**



**HEADINGTON**  
 ENERGY PARTNERS, LLC

**Proudly operating in South Texas.**

For more information contact:  
**Randy Bissell, [randyb@headingtonenergy.com](mailto:randyb@headingtonenergy.com) or call 361-885-0113**



Offices in Corpus Christi, Sarita, and McKinney, Texas - Exploring and Developing properties  
 In South Texas, Permian Basin , East Texas & Oklahoma

SPONSORS

**SEI**®

*Seismic Exchange, Inc.*

**Strategic Speculative Surveys**  
Geophysical Data Marketing & Management

**YOUR**  
Full Service  
National  
Seismic Data  
Marketing Firm

Corpus Marketing Contact  
Max Cunningham  
432.230.5277

DALLAS DENVER HOUSTON NEW ORLEANS TULSA

4805 Westway Park Blvd., Houston, Texas 77041 832.590.5100

[www.seismicexchange.com](http://www.seismicexchange.com)



**VirTex Operating Company, Inc.**

615 North Upper Broadway, Suite 525, Corpus Christi, Texas 78477  
(361) 882-3046

# *Energy Auxiliary*

The objective of the Auxiliary shall be to encourage social relations among members and to assist any of the various professional Energy Industry organizations in projects undertaken jointly

*We don't hold monthly meetings; we simply have 3-4 social gatherings per year! It's a great way to get to know folks in our industry and a good time is always had by all.*

## **Events planned for 2018-2019**

Holiday Cocktail Party - Wednesday, December 5<sup>th</sup>  
*Water Street Seafood Company*

Ladies Night Out - Thursday, February 7<sup>th</sup>  
*Bunko at the Bissells' Otra Casa*

Shrimp Boil - Friday, April 26<sup>th</sup>  
*Hosted by Rolf and Lissa Woods*

Spring Luncheon - date to be determined

## **Board Members for 2018-2019**

President ~ Darlene Murry

Vice President ~ Amy Buford; Secretary ~ Dawn Bissell

Treasurer ~ Rita Graham

Social Directors ~ Melody Schexnayder, Mary Jones, Barbara Collins

Parliamentarian ~ Rita Graham

---

## Energy Auxiliary

2018 - 2019 ~ Membership Form

Please enclose your membership dues of \$35 payable to EA and return to  
Rita Graham – 437 Bermuda Pl. - Corpus Christi, TX 7841

Name: \_\_\_\_\_ Spouse's name: \_\_\_\_\_

Address: \_\_\_\_\_ Best contact number: \_\_\_\_\_

City, Zip: \_\_\_\_\_ Email: \_\_\_\_\_

Please indicate on back how you would like to help - from joining the board, serving on a committee, to ideas for events. Suggestions?



# SABALO ENERGY

SABALO ENERGY | P.O. BOX 2907 | CORPUS CHRISTI, TX 78403 | 361.888.7708 | SABALOENERGY.COM

## **“A Wild Goose Chase on the Texas Gulf Coast”**

The Seabreeze Field had been there a long time and had been thoroughly drilled; so everyone thought! The location of Seabreeze Field is in Southeast Texas in Chambers County (Figure 1.) Finally following a letter request to management, we had acquired a 3D data set over the area and the hunt was back on. I loved to goose hunt on the Texas Gulf Coast; some of the best goose hunting in the world, so the naming scheme for newly found prospects on the new 3D became names of different kinds of wild geese. The naming scheme was logical and so the “wild goose hunt” began.

The basic trapping structure of the main field was a north- south trending four way anticlinal closure downthrown to a large north –south trending down to the east listric normal fault. One well, on top and in the middle of the structure, had already produced over 4 BCF from the Frio Nodosaria blanpedi (Seabreeze F-4 Series) and the assumption was that the sands and structure were drained.

The basic Field Stratigraphy and Biostratigraphic nomenclature is outlined in Figure 2. When we received the data and loaded it on our new Geoquest workstations, Greg Bunk and I were both panning through the data volume vertically and horizontally hunting for structural and stratigraphic complexity variation and that is when the “1st big goose landed in the spread of past well decoys”. The structure was faulted by another fault, that no one had recognized in past structural interpretations, running enechelon to the large north –south trending down to the East fault. The bright spot that showed up on the upthrown side of that fault was amazing and there was no significant amplitude on the downthrown side where the older well had produced several BCF in the past.

When I found out that the acreage was in jeopardy of being lost, I ran down the hall to our district manager and told him we needed to save the lease because it looked like there was a great prospect there to be drilled immediately. The company almost immediately got a dozer out there and scraped of the location and the hunt was on.

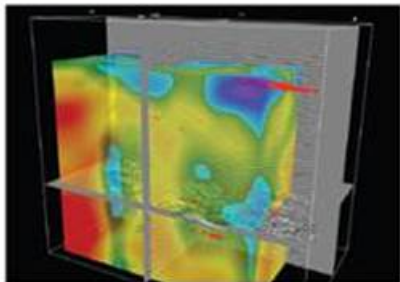
We brought one of our Offshore guys into supervise the well since there was a very good chance we would find something really good. The well was spudded very soon after building location. My mud logger called in to the house early in the AM one morning as we drilled into the Frio Nodosaria Sand. The “wild goose had set it wings and landed”!! His voice was shaking. We had max gas of around 5000 units with severe mud cut to 12.5 PPG and the well was definitely talking to us. In his shaking voice he simply said “I don’t know if we can hold this one”! The Greater Canadian wild goose was literally trying to take off! I had named this prospect Nodosaria “Greater”. After a couple of days of fighting the well and slowly building mud weight the well (“the Greater Wild Goose”) was finally back under control. All the guys on location did a great job of keeping the “goose from taking off”.

I had lined up the e- logging out of Liberty, Texas through Schlumberger and I met the logging crew in the Field to get a “triple combo” over the section we had encountered. Even though we had plenty of mud weight to hold the zone, the well and sand had still talked to us strongly indicating that the sand was going to be something special as far as rock properties and pressure. The recently trained e-logging engineer was a young lady from China and we communicated in broken English and sketched pictures as

continued on page 23

**SEIMAX**<sup>SM</sup>  
TECHNOLOGIES

Innovative Seismic  
Processing Solutions



**2D and 3D Land and Marine  
Pre-Stack Time and Depth Imaging**

**Pre- and Post-Stack Attributes  
for Amplitude, Frequency and  
Resolution**

**4805 Westway Park Blvd. Houston, TX 77041**  
**p: 832.554.4301 [www.seimaxtech.com](http://www.seimaxtech.com)**



we prepared to log. In Figure 3 is what we encountered and what a “special wild goose” it was. As it came across the logging screen; the image was etched forever in my memory! 70’ of net gas /condensate pay with 1000 ohm- meters resistivity and an average of 30% density porosity; a magnificent Blocky Frio distributary channel full with 50 ‘ net pay and 20’ of net pay in stringers of an overbank crevasse splay. Wow, we had really bagged a trophy wild goose on that shot. Oh, and as the 3D indicated, it was a new virgin pressure fault block.

After getting the pipe set to bottom it was time to complete the well. My Company sent me to Southeast Texas to witness and observe the perforation of the high quality Frio Channel Sand. It was a very cold day on the Gulf Coastal Plain hovering just above freezing. We confirmed the perforation of the pipe by the sound conveyed up the pipe through conduction with headphones. The well was opened up and the fluid the well was loaded with began to unload and flow through the pipe going to the testing unit. The unloading fluid was warm through the pipe to my hands and then the gas condensate “hit” and made it to the surface and almost froze my hand to the pipe as the “cool down affect” occurred. In fact I called the office just as it actually started to snow in Southeast Texas and let them know that the hydrocarbons were to the surface with a really dramatic cool down affect.

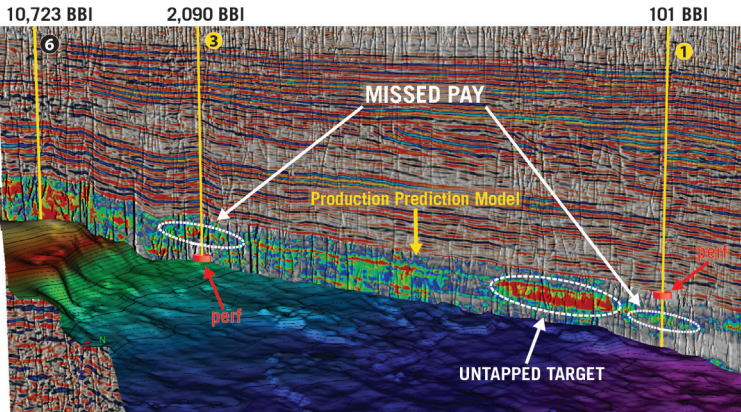
The testing was accomplished and the technician generated charts and graphs and descriptions of the well’s ability to flow hydrocarbons. The technician generated a calculated absolute open flow (CAOF) value and brought me the results. He looked at it and wasn’t sure he had performed the calculation correctly and went through the process again. He brought it back and said “no this is the correct value” but also said he had never seen one this high. Most of the time onshore the CAOF values are between 2 MMCFD and say 80 MMCFD. I had seen a CAOF value for a Miocene well offshore once for 450 MMCFD. The CAOF for this well calculated at 994039 MCFD (Figure 4.). In other words if this sand could have been brought to the surface and flowed unimpeded without constraint by a certain diameter of pipe to the atmosphere it would have flowed at almost 1BCFD; almost unbelievable flow characteristics; a near perfect sandstone reservoir; an example of some of the best subsurface sand on the planet.

Yep, this was some kind of trophy goose!

As time went on, my team and I kept hunting and drilled several other wells. Most were successful; it was a good hunt. In Figure 5 and Figure 6 are 2 more special e-logs and again these prospects were named after wild geese. The Oryx Sun Fee wells were drilled on an unusual piece of real estate. The manager of our district asked if there was another immediate idea to drill like the 1st one. I said yes, and we proceeded to get ready to drill another prospect. When land check out the property, we discovered that we owned it “lock, stock, and barrel”. We owned the surface and the minerals, and our income interest was somewhere around 97%; again almost unbelievable. There was another untested fault block to be drilled. There were also some “bright spots” at the top of the FRIO in the Marginulina as well as the good looking Frio Nodosaria “bright spot”. We drilled through the upper Frio sands and stopped to set pipe right above the Nodosaria. When I logged the well there were some really nice thinner gas sands in the Marginulina, section as we had predicted. When pipe was being set, the cement flash set up inside the pipe well above the newly discovered sands; so we capped the well(the White Fronted Prospect) and skidded the rig slightly on the location pad and spudded the well again knowing that we

continued on page 25

# SEISMIC-BASED ANALYTICS



An arbitrary line through 3 vertical wells in the West Texas Permian Basin shows the lateral variations of the Production Prediction Model and reveals refrac potential for Wells 1 and 3 where the red disks indicate the actual completion intervals and the white circles highlight the missed pay. Note the untapped target near Well 1.

In today's challenging market, no one can afford a bad well. Global's seismic-based analytics can help you avoid the pitfalls and pinpoint the sweet spots. By integrating seismic, geological, and engineering data, this proprietary workflow identifies the most prospective areas and zones for drilling - down to the stage level! This reduces risk, optimizes spend, and greatly increases the chance for every well and stage to be a winner.

- High-grade prospective drilling areas and zones
- Enhance well planning and geosteering
- Optimize completion placements and frac design
- Predict well performance at stage level
- Boost EUR of individual wells
- Identify candidates for refrac

Global's **SEISMIC-BASED ANALYTICS** approach is field-proven with successful projects in both conventional and unconventional reservoirs. Contact us today to find out how Global can help you make every well a winner.

## FIND WHAT YOU'VE BEEN MISSING

For More Information:  
[www.globalgeophysical.com/ANALYTICS](http://www.globalgeophysical.com/ANALYTICS) or  
Contact [ANALYTICS@globalgeophysical.com](mailto:ANALYTICS@globalgeophysical.com)



already had pay to drill out to and perforate later. Guess you could say we had that “goose in the bag”. The hunt was back on. We drilled through the Marg sands again, logged them and set pipe. Then we drilled into our main Frio Nodosaria target and we found the “big sand” again. This time we held it better from the start. We logged the well and Figure 6 shows you what we found. We filled the Frio Distributary Channel Sand up again with 48’ of net gas/condensate pay, but the crevasse splay stringers were wet this time; apparently further down the Paleo structure of the original trapping anticline. Still a very nice wild goose! We set pipe and from the annotations on the log you can see what a great well it made. We then drilled out the other well with the flash set cement and also made another Excellent well.

All I can say is “what a wild goose chase that was but we successfully bagged our game!” Thank you Sun-Oryx for sponsoring a great and profitable hunt. Those were great times in the Oil Patch!

Sincerely:

Dennis A. Taylor; Geologist, Owner, & President  
Metate Minerals LTD  
Corpus Christi, Texas

continued on page 27

SPONSORS

**CHARGER EXPLORATION**

**Michael L. Jones**  
President/Geologist

**Onshore Gulf Coast Prospect Generation and Consulting**

1001 McKinney Street, Suite 801 Houston, TX 77002  
Ofc: 713.654.0080 Cell: 713.398.3091  
Email: [mjones@chargerexploration.com](mailto:mjones@chargerexploration.com)  
[www.chargerexploration.com](http://www.chargerexploration.com)

**That old gas kick could be  
your next discovery!**

**Characterization of Unconventional Reservoirs**

Traditional methods of core analysis cannot yield acceptable results when applied to unconventional reservoirs such as gas shales, tight gas sands, coals and thin bed formations.

Production controls on these reservoirs are not limited to hydrocarbons in place, permeability and porosity. Pay Identification requires an understanding of complex lithologies and exotic mineralogies.

Only Core Lab offers the comprehensive range of unique technologies required to optimize your unconventional reservoirs.

Geological Petrophysical Geomechanical Geochemical



To learn more about our unique unconventional reservoir evaluation services contact Core Lab. (713) 328-2121 or (361) 289-5457 [psinfo@corelab.com](mailto:psinfo@corelab.com)

© 2005 Core Laboratories. All rights reserved.

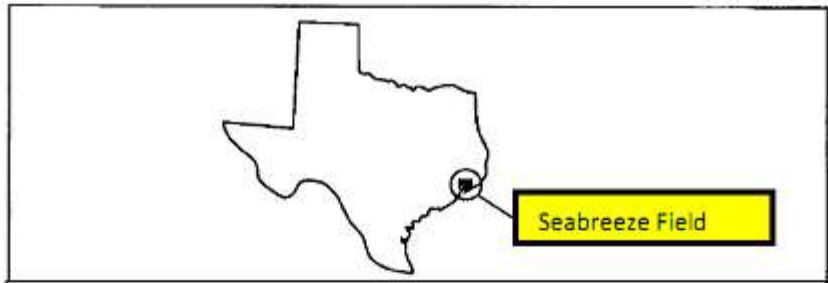


Figure 1—Location of Seabreeze Field in Chambers County, SE Texas.

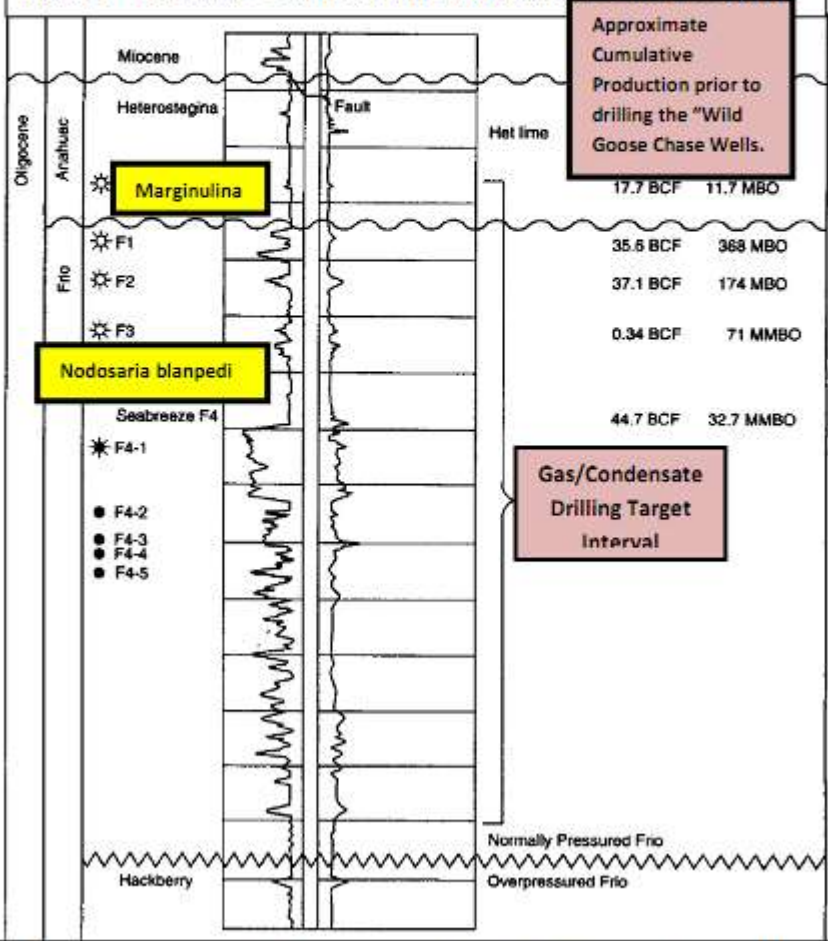


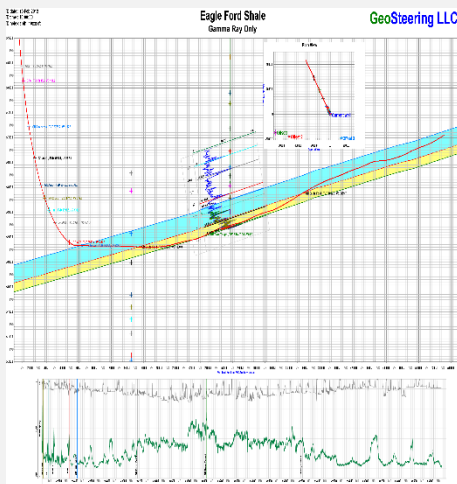
Figure 2—Field Stratigraphy Nomenclature with Biostratigraphic Nomenclature.

Figure 1 & 2

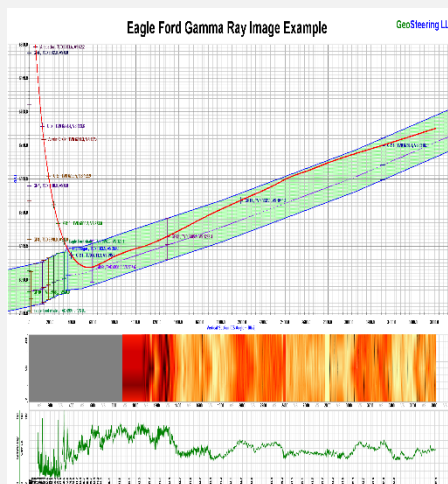
continued on page 29

## Geosteering in the USA and Internationally since 2002

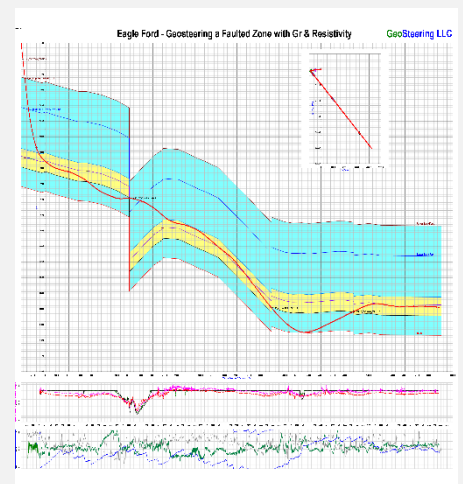
### Steering with GR



### Steering with Images



### Steering with Resistivity



### Experience in Texas

Austin Chalk, Barnett, Buda, Caddo, Devonian, Eaglebine / Woodbine, Eagle Ford, Georgetown, Granite Wash, Permian (Delaware, Midland), Smithwick

# Seabreeze Ld. Co. No. 12

## N. Seabreeze Field Chambers, Co. Texas

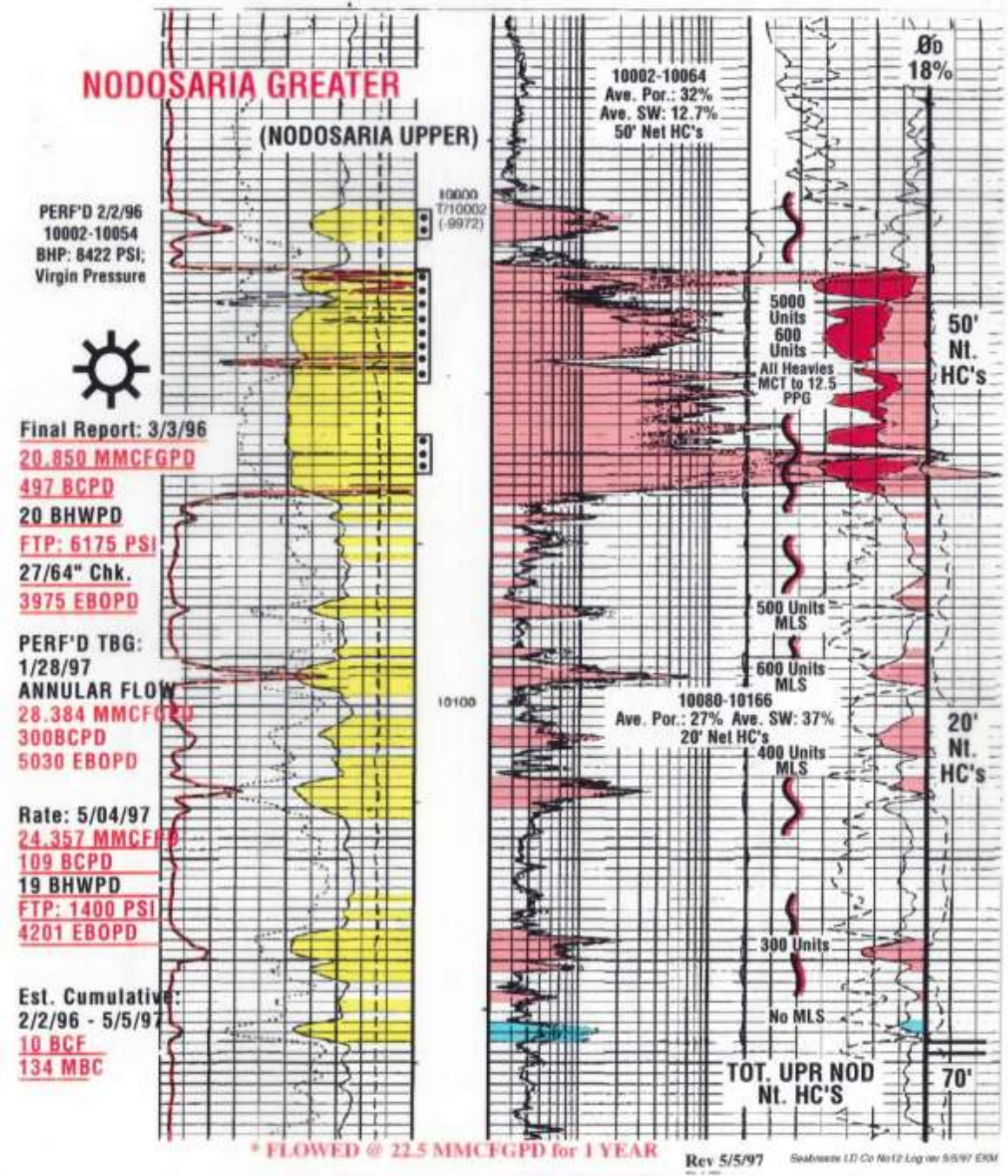


Figure 3—Seabreeze Land Company No.12 (Greater Prospect) Confirming “Triple Combo” E-Log  
Figure 3

continued on page 31

## SPONSORS



**USE PROMO CODE - CCGSTRIDE  
FOR \$5.00 OFF YOUR FIRST RIDE.**

**DOWNLOAD THE TRIDE  
PASSENGER APP TODAY!**

GET IT ON  
 **Google Play**

 Download on the  
App Store

RIDETRIDE.COM

# STALKER ENERGY, L.P.

### **Austin Office:**

1717 W. 6<sup>th</sup> Street, Ste 230

Austin, Texas 78703

512.457.8711

Contact: Bill Walker, Jr.

[bwalker@stalkerenergy.com](mailto:bwalker@stalkerenergy.com)

### **Houston Office:**

2001 Kirby Drive, Suite 950

Houston, Texas 77019

713.522.2733

Contact: Todd Sinex

[tsinex@stalkerenergy.com](mailto:tsinex@stalkerenergy.com)

[www.stalkerenergy.com](http://www.stalkerenergy.com)





CHAMBERS UPPER TEXAS COAST SEABREEZE NORTH WPD

ORYX ENERGY STATUS: GAS  
12 SEABREEZE LAND CO (API 42-071-32043) (PERMIT # 442596)

LOC'N: (E/S-45E-2): 4 MI S STOWELL, TX, 480 AC LSE, 40 AC UNIT, SURVEQUIV. MAYES WM # 102, A-434, 1062 FNL 522 FEL SUR, 1002 FNL 522 FEL LSE, (VERTICAL)

SPUD: 01/07/96 COMP: 02/05/96 EL: 14 GR DTD: 10540 (NODOSARIA BLANPIEDI) CONTR: PATTERSON DRLG RIG # 26

CSG/LNR/TBG: 9 5/8 @ 2230 W/850 SX, 7 @ 9410 W/370 SX, 5 1/2 @ 9078-10536, 4 1/2 @ 9078-10536 W/210 SX, 2 @ 8900.2 1/2 @ 9914, SET PKR @ 9904;

RESULT: IPF 6128 MCFD, CAOF 994039, 199 BCPD, GTY 46, GAS GTY .605, GLR 30800, SITP 7128, BHSIP 8422 PROD ZONE - NODOSARIA BLANPIEDI (NODOSARIA GREATER) 10002-10054 (GROSS) NO CORES OR TESTS

COMP INFO: LOG TYPES: CCL 10540, CNL 2234-9460, DENL 2234-9460, 9420-10540, DI 2234-9460, 9420-10540, GR 10540, 2234-9460, LDT 2234-9460, NEUT 2234-9460, 9420-10540, SP 2234-9460, RAN RWA, AJT 2234-9460 RAN FML 9420-10548, PROD TEST(S): PERFD @ UNRPTD INTERVAL, F 132 BCPD, 7083 MCFD, BW, 14/64 CK, TP 7000, UNRPTD INTERVAL, F 190 BCPD, 7029 MCFD, 3 BW, 14/64 CK, TP 7000, UNRPTD INTERVAL, F 497 BCPD, 20850 MCFD.

(OVER)

COPYRIGHT 1996 PETROLEUM INFORMATION CORPORATION

DATE 05/13/96 CARD # 00005-UTC

20 BW, 27/64 CK, TP 6175, PRODUCING INTERVAL(S) DATA: PERF (NODOSARIA BLANPIEDI), 10002-10006, 10014-10036, 10046-10054, W/4 PF, POINT TEST: 25/64 CK 6128 MCFD, TP 7024, BHFP 8398, 20/64 CK 2808 MCFD, TP 7089, BHFP 8402, 14/64 CK 2335 MCFD, TP 7095, BHFP 8412, 10/64 CK 1462 MCFD, TP 7120, BHFP 8416, BHSIP 8422; CAOF 994039 MCFD; TPAY 10002 PT COMP 2/5/96 RESV: NODOSARIA GREATER, RIG REL: 02/05/96 (NODOSARIA (NODOSARIA GREATER) DISCOVERY - NEW POOL)

P/L: CENTANA

SDWL CORES: TOOK 43 SDWL CORES, 7538-8611 REC 34, TOOK 44 SDWL CORES, 9420-10540 REC 38;

DATE 05/13/96 CARD # 00005-UTC

Figure 4. — Scout Ticket: SBLD Co. #12(Greater Prospect); CAOF of 994039 MCFD

continued on page 33

# JOIN!



The Desk & Derrick Club of Corpus Christi is a dynamic organization that promotes the education of the petroleum, energy and allied industries and advances the professional

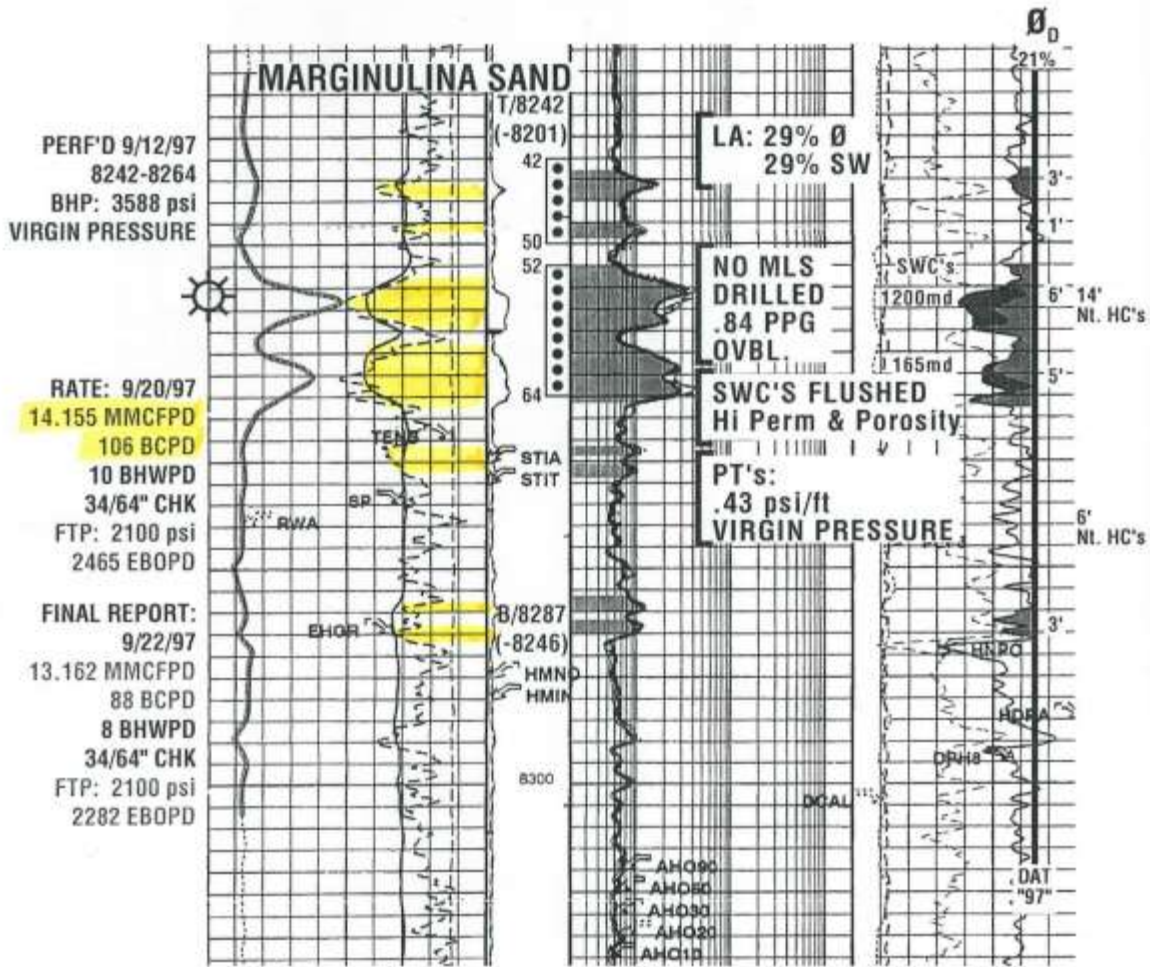
#### Member Benefits:

- Learn from energy industry experts.
- Network with energy industry leaders and colleagues.
- Attend regional and national meetings.
- Receive critical updates and information about the energy industry.
- Enhance communication and leadership skills.
- Make friends for life!

For more information about the Desk & Derrick Club of Corpus Christi and to learn about member eligibility, go to [www.addc.org](http://www.addc.org) or contact Jena Nelson at 361-844-6726 or email at [jena@amshore.com](mailto:jena@amshore.com)

The Desk & Derrick Club of Corpus Christi is a proud affiliate of the Association of Desk And Derrick Clubs, [www.addc.org](http://www.addc.org)

**Oryx Sun Fee No. 3  
(White Fronted Prospect)  
N. Seabreeze/Seabreeze Field  
10" AIT T-Com Hi Res  
Platform Express  
Chambers Co., Texas**



sun fee #3log 10/14/97 ERM

Figure 5.—White Fronted Prospect with Upper Frio Marg Sands

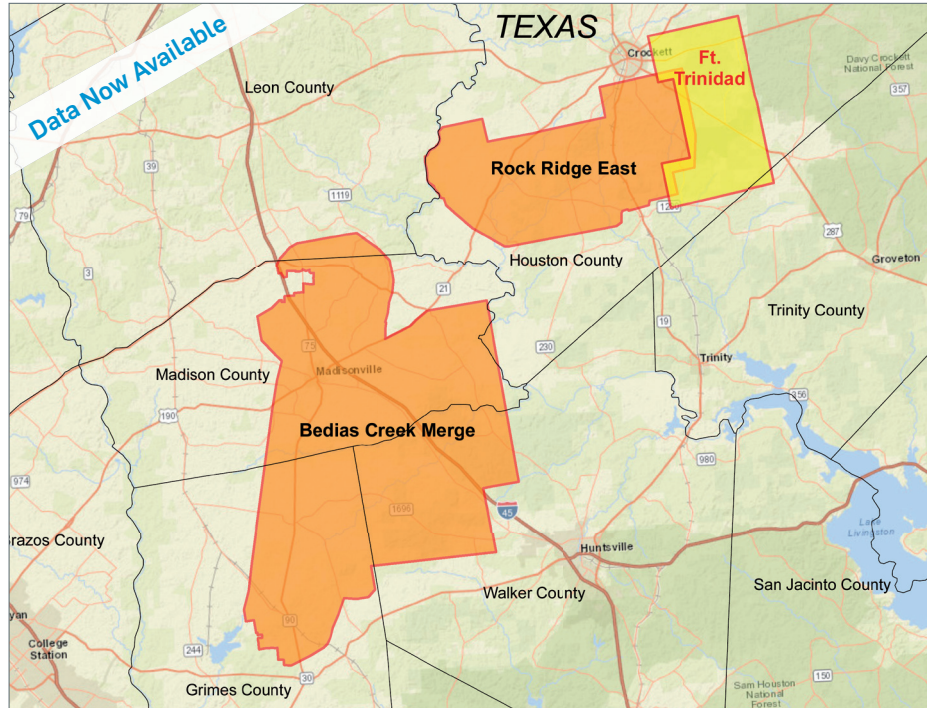
Figure 5

continued on page 35



# New Ft. Trinidad 3D Survey Houston and Trinity Counties, TX

**YOU'VE ARRIVED**



CGG continues to expand its East Texas footprint with high-quality 3D projects while illuminating the stacked pay formations.

Data is already available from our Bedias Creek Merge and Rock Ridge East projects. Orthorhombic PSTM from our newest project Ft. Trinidad is also now available.

**The right data, in the right place, at the right time**

Scott Tinley  
☎ +1 832 351 8544  
✉ scott.tinley@cgg.com

Cheryl Oxsheer  
☎ +1 832 351 8463  
✉ cheryl.oxsheer@cgg.com



[cgg.com/ROP](http://cgg.com/ROP)

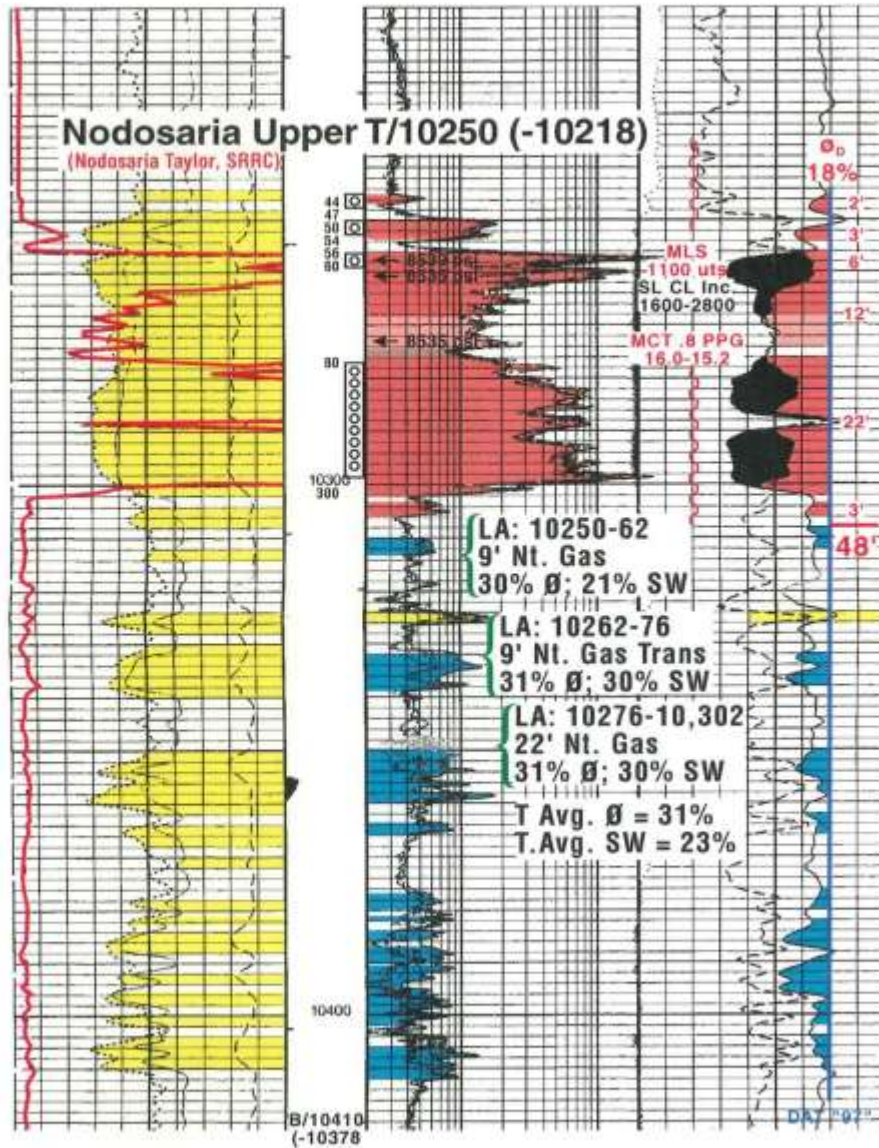


**Oryx Sun Fee #2 (Blue Goose Prospect)**  
 N. Seabreeze/Seabreeze Field  
 5" AIT T-Com Hi Res  
 Chambers Co., Texas

PERF'D 5/16/97  
 10244-10300  
 BHP: 8539 psi  
 VIRGIN PRESSURE



**FINAL REPORT:**  
 5/29/97  
 26.659 MMCFD  
 1008 BCPD  
 0 BWPD  
 FTP: 6550 psi  
 26/94" CHK.  
 5451 EBOPD  
 RATE: 9/15/97  
 14.3 MMCFD  
 417 BCPD  
 5215 BWPD  
 FTP: 3500 psi  
 2803 EBOPD  
**Est. CUMULATIVE:**  
 5/16/97-9/15/97  
 2.8 BCF  
 84 MBC  
 131 MBW



sun fee #2 log 9/18/97

Figure 6.—Blue Goose Prospect (97% Income Interest) Confirming E-Log

Figure 6

## Biography

Mr. Taylor was born on the Llano Estacado (palisaded plains) in the West Texas town of Levelland. Levelland Field is one of the largest oil fields on earth. His father, Raymond Taylor, worked for Amerada Geophysical Company, and so Dennis was "raised" in the petroleum industry. He was inspired at an early age by many different people associated with oil and gas, especially Tommy Southgate, an Amerada geologist/geophysicist from Tulsa, Oklahoma, to become a petroleum geologist.

Dennis has a full spectrum of geoscience experience that includes production, exploitation, and exploration for oil and gas reserves. For 37 years he has predominantly worked on the Texas and Louisiana Gulf Coast. In working for Sun Exploration and Production Company, Wagner Oil Company, Suemaur Exploration Company, and his Independent company, Metate Minerals Inc., he has drilled and completed over 150 oil and gas wells ranging in depth from 1500' to 16500'. Dennis has filed approximately 80 new field pay discoveries with the Texas Railroad Commission. Dennis formerly taught Geology and Earth Science for nine years at Okeene Public Schools and Oklahoma State University.

Dennis is an AAPG Certified Professional Petroleum Geologist (# 5177), and received his BS degree in Geology from Oklahoma State University in 1974, and worked on his Master degree in Petroleum Geology from 1981 until 1983.

Dennis is currently President and Chief Geologist for American Shoreline, Inc. American Shoreline is actively drilling wells in South Texas and participating in drilling ventures. Dennis is an avid outdoor enthusiast. He loves mountain climbing, cave exploring, mineral collecting, and SCUBA Diving. He considers himself a geologist and a naturalist and is a passionate outdoor photographer and underwater videographer. He is also a guitarist and a song writer.

# Corpus Christi Geological Society Papers available for purchase at the Texas Bureau of Economic Geology

Note: Publication codes are hyperlinked to their online listing in [The Bureau Store](http://begstore.beg.utexas.edu/store/) (<http://begstore.beg.utexas.edu/store/>).

Cretaceous-Wilcox-Frio Symposia, D. B. Clutterbuck, Editor, 41 p., 1962.  
[CCGS 002S](#) \$15.00

Type Logs of South Texas Fields, Vol. I, Frio Trend. Compiled by Don Kling. Includes 134 fields. 158 p., 1972. Ring binder.  
[CCGS 015TL](#) \$25.00

Type Logs of South Texas Fields, Vol. II, Wilcox (Eocene) Trend. Compiled by M. A. Wolbrink. 98 p., 1979. Ring binder.  
[CCGS 016TL](#) \$25.00

## Field Trip Guidebooks

South Texas Uranium. J. L. Cowdrey, Editor. 62 p., 1968.  
[CCGS 102G](#) \$12.00

Hidalgo Canyon and La Popa Valley, Nuevo Leon, Mexico. CCGS 1970 Spring Field Conference. 78 p., 1970.  
[CCGS 103G](#) \$8.00

Padre Island National Seashore Field Guide. R. N. Tench and W. D. Hodgson, Editors. 61 p., 1972.  
[CCGS 104G](#) \$5.00

Triple Energy Field Trip, Uranium, Coal, Gas—Duval, Webb & Zapata Counties, Texas. George Faga, Editor. 24 p., 1975.  
[CCGS 105G](#) \$10.00

Minas de Golondrinas and Minas Rancherías, Mexico. Robert Manson and Barbara Beynon, Editors. 48 p. plus illus., 1978.  
[CCGS 106G](#) \$15.00

Portrero Garcia and Huasteca Canyon, Northeastern Mexico. Barbara Beynon and J. L. Russell, Editors. 46 p., 1979.  
[CCGS 107G](#) \$15.00

Modern Depositional Environments of Sands in South Texas. C. E. Stelling and J. L. Russell, Editors. 64 p., 1981.  
[CCGS 108G](#) \$15.00

Geology of Peregrina & Novillo Canyons, Ciudad Victoria, Mexico, J. L. Russell, Ed., 23 p. plus geologic map and cross section, 1981.  
[CCGS 109G](#) \$10.00

Geology of the Llano Uplift, Central Texas, and Geological Features in the Uvalde Area. Corpus Christi Geological Society Annual Spring Field Conference, May 7-9, 1982. Various paginated. 115 p., 53 p.  
[CCGS 110G](#) \$15.00

Structure and Mesozoic Stratigraphy of Northeast Mexico, prepared by numerous authors, variously paginated. 76 p., 38 p., 1984.  
[CCGS 111G](#) \$15.00

Geology of the Big Bend National Park, Texas, by C. A. Berkebille. 26 p., 1984.  
[CCGS 112G](#) \$12.00

# GEO LINK POST

<http://www.lib.utexas.edu/books/landsapes/index.php> Free service. Rare, fragile, hard-to-find, public domain documents covering various topics about the landscape of Texas. Includes the Texas Geological Survey from 1887 until 1894.

**USGS TAPESTRY OF TIME AND TERRAIN** <http://tapestry.usgs.gov> The CCGS is donating to all of the 5th and 6th grade schools in the Coastal Bend. Check it out--it is a spectacular map. You might want to frame one for your own office. The one in my office has glass and a metal frame, and It cost \$400 and it does not look as good as the ones we are giving to the schools.

**FREE TEXAS TOPOS'S** <http://www.tnris.state.tx.us/digital.htm> these are TIFF files from your state government that can be downloaded and printed. You can ad them to SMT by converting them first in Globalmapper. Other digital data as well.

**FREE NATIONAL TOPO'S** [http://store.usgs.gov/b2c\\_usgs/b2c/start/\(xcm=r3standardpitrex\\_prd\)/.do](http://store.usgs.gov/b2c_usgs/b2c/start/(xcm=r3standardpitrex_prd)/.do) go to this webpage and look on the extreme right side to the box titled TOPO MAPS DOWNLOAD TOPO MAPS FREE.

<http://www.geographynetwork.com/> Go here and try their top 5 map services. My favorite is 'USGS Elevation Date.' Zoom in on your favorite places and see great shaded relief images. One of my favorites is the Great Sand Dunes National Park in south central Colorado. Nice Dunes.

<http://antwrp.gsfc.nasa.gov/apod/asropix.html> Astronomy picture of the day--awesome. I click this page everyday.

<http://www.spacimaging.com/gallery/ioweek/iow.htm> Amazing satellite images. Check out the gallery.

<http://www.ngdc.noaa.gov/seg/topo/globegal.shtml> More great maps to share with kids and students.

[www.ccgeo.org](http://www.ccgeo.org) Don't forget we have our own we page.

<http://terra.nasa.gov/gallery/> Great satellite images of Earth.

[www.ermaper.com](http://www.ermaper.com) They have a great free downloadable viewer for TIFF and other graphic files called ER Viewer.

<http://terrasrver.com> Go here to download free aerial photo images that can be plotted under your digital land and well data. Images down to 1 meter resolution, searchable by Lat Long coordinate. Useful for resolving well location questions.



**TYPE LOGS OF SOUTH TEXAS FIELDS by Corpus Christi Geological Society**

**ARANSAS COUNTY**

Aransas Pass/McCampbell Deep  
Bartell Pass  
Blackjack  
Burgentine Lake  
Copano Bay, South  
Estes Cove  
Fulton Beach  
Goose Island  
Half Moon Reef  
Nine Mile Point  
Rockport, West  
St. Charles  
Tally Island  
Tract 831-G.O.M. (offshore)  
Virginia

**BEE COUNTY**

Caesar  
Mosca  
Nomanna  
Orangedale(2)  
Ray-Wilcox  
San Domingo  
Tulsita Wilcox  
Strauch\_Wilcox

**BROOKS COUNTY**

Ann Mag  
Boedecker  
Cage Ranch  
Encintas  
ERF  
Gyp Hill  
Gyp Hill West

Loma Blanca  
Mariposa  
Mills Bennett  
Pita  
Tio Ayola

Tres Encinos

**CALHOUN COUNTY**

Appling  
Coloma Creek, North  
Heyser  
Lavaca Bay  
Long Mott  
Magnolia Beach  
Mosquito Point  
Olivia  
Panther Reef  
Powderhorn  
Seadrift, N.W.  
Steamboat Pass  
Webb Point  
S.E. Zoller

**CAMERON COUNTY**

Holly Beach  
Luttes  
San Martin (2)  
Three Islands, East

Vista Del Mar

**COLORADO COUNTY**

E. Ramsey  
Graceland N. Fault Blk  
Graceland S. Fault Blk

**DEWITT COUNTY**

Anna Barre  
Cook  
Nordheim  
Smith Creek  
Warmesley  
Yorktown, South

**DUVAL COUNTY**

DCR-49  
Four Seasons  
Good Friday  
Hagist Ranch  
Herbst  
Loma Novia  
Petrox  
Seven Sisters  
Seventy Six, South  
Starr Bright, West

**GOLIAD COUNTY**

Berclair  
North Blanconia  
Bombs  
Boyce  
Cabeza Creek, South  
Goliad, West  
St Armo  
Terrell Point

**HIDALGO COUNTY**

Alamo/Donna  
Donna  
Edinburg, West  
Flores-Jeffress  
Foy  
Hidalgo  
LA Blanca  
McAllen & Pharr  
McAllen Ranch  
Mercedes  
Monte Christo, North  
Penitas  
San Fordyce  
San Carlos  
San Salvador  
S. Santallana  
Shary  
Tabasco  
Weslaco, North  
Weslaco, South

**JACKSON COUNTY**

Carancahua Creek  
Francitas  
Ganado & Ganado Deep  
LaWard, North  
Little Kentucky

Maurbro  
StewartSwan Lake  
Swan Lake, East  
Texana, North  
West Ranch

**JIM HOGG COUNTY**

Chaparosa  
Thompsonville,N.E.

**JIM WELLS COUNTY**

Freebom  
Hoelscher  
Palito Blanco  
Wade City

**KARNES COUNTY**

Burnell  
Coy City  
Person  
Runge

**KENEDY COUNTY**

Candelaria  
Julian  
Julian, North  
Laguna Madre

Rita  
Stillman

**KLEBERG COUNTY**

Alazan  
Alazan, North  
Big Caesar  
Borregos  
Chevron (offshore)  
Laguna Larga  
Seeligson  
Sprint (offshore)

**LA SALLE COUNTY**

Pearsall

**LAVACA COUNTY**

Hallettsville  
Hope  
Southwest Speaks  
Southwest Speaks Deep

**LIVE OAK COUNTY**

Atkinson  
Braslau  
Chapa  
Clayton  
Dunn  
Harris  
Houdman  
Kittie West-Salt Creek  
Lucille  
Sierra Vista  
Tom Lyne  
White Creek  
White Creek, East

**MATAGORDA COUNTY**

Collegeport

**MCMULLEN COUNTY**

Arnold-Weldon  
Brazil  
Devil's Waterhole  
Hostetter  
Hostetter, North  
**NUECES COUNTY**  
Agua Dulce (3)  
Arnold-David  
Arnold-David, North  
Baldwin Deep  
Calallen  
Chapman Ranch  
Corpus Christi, N.W.  
Corpus Christi West C.C.  
Encinal Channel  
Flour Bluff/Flour Bluff, East  
GOM St 9045(offshore)  
Indian Point  
Mustang Island  
Mustang Island, West  
Mustang Island St.  
889S(offshore)

Nueces Bay/Nueces Bay  
West

Perro Rojo

Pita Island

Ramada

Redfish Bay

Riverside

Riverside, South

Saxet

Shield

Stedman Island

Turkey Creek

**REFUGIO COUNTY**

Bonnieview/Packery Flats

Greta

La Rosa

Lake Pasture

Refugio, New

Tom O'Connor

**SAN PATRICIO COUNTY**

Angelita East

Commonwealth

Encino

Enos Cooper

Geronimo

Harvey

Hiberia

Hodges

Mathis, East

McCampbell Deep/Aransas Pass

Midway

Midway, North

Odem

Plymouth

Portilla (2)

Taft

Taft, East

White Point, East

**STARR COUNTY**

El Tanque

Garcia

Hinde

La Reforma, S.W.

Lyda

Ricaby

Rincon

Rincon, North

Ross

San Roman

Sun

Yturria

**VICTORIA COUNTY**

Helen Gohike, S.W.

Keeran, North

Marcado Creek

McFaddin

Meyersville

Placedo

**WEBB COUNTY**

Aquilares/Glen Martin

Big Cowboy

Bruni, S.E.

Cabezon

Carr Lobo

Davis

Hirsch

Juanita

Las Tiendas

Nicholson

O'Ham

Olmitos

Tom Walsh

**WHARTON COUNTY**

Black Owl

**WILLACY COUNTY**

Chile Vieja

La Sal Vieja

Paso Real

Tenerias

Willamar

**ZAPATA COUNTY**

Benavides

Davis, South

Jennings/Jennings, West

Lopeno

M&F

Pok-A-Dot

**ZAVALA COUNTY**

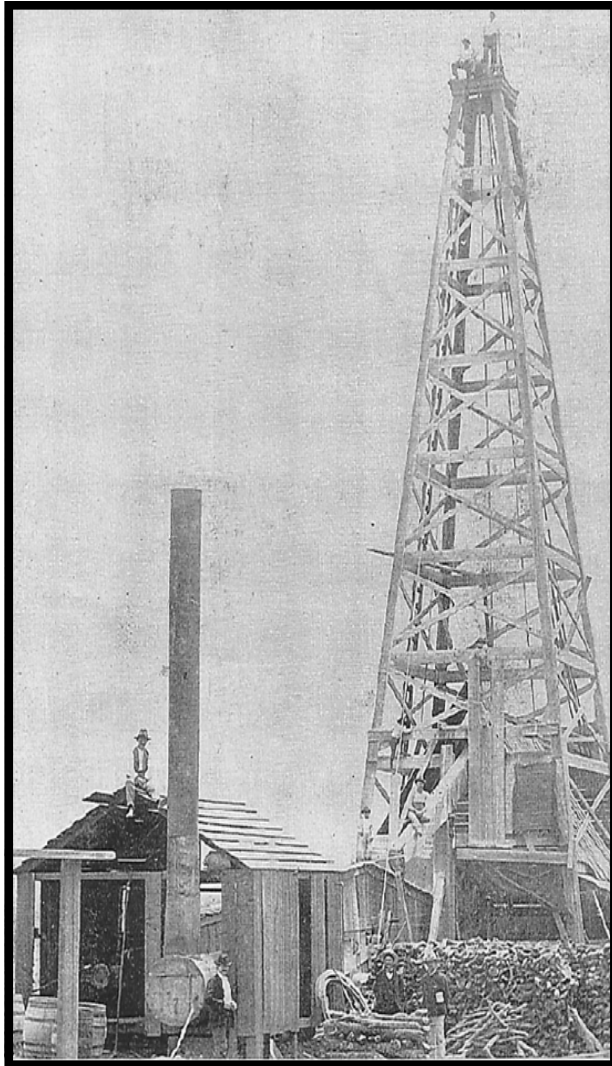
El Bano

Call Coastal Bend Geological Library, Lettie: 361-883-2736  
I log -- \$10 each, 5-10 logs \$9 each and 10 + logs \$8.00 each – plus postage

**OIL MEN**  
**TALES FROM THE SOUTH TEXAS OIL PATCH**  
**DVD**  
**MEMBER PRICE \$25**  
**NON-MEMBER \$30**



**To Order DVD**  
**Sebastian Wiedmann**  
**[swiedmann.geo@gmail.com](mailto:swiedmann.geo@gmail.com)**  
**If mailed add \$5.00**



Corpus Christi Geological Society  
C/O Javelina Press  
P. O. Box 60181  
Corpus Christi, TX 78466

Order Form

Mail order form for Wooden rigs-Iron Men. The price is \$75 per copy, which includes sales tax, handling, and postage

Name \_\_\_\_\_

Address \_\_\_\_\_

City, State, Zip \_\_\_\_\_

No. of books \_\_\_\_\_ Amount enclosed \_\_\_\_\_

Send to Corpus Christi Geological Society Book Orders

P. O. Box 60181

Corpus Christi, TX. 78466 Tax exempt# if applicable \_\_\_\_\_

**Wooden Rigs—Iron Men**

The Story of Oil & Gas in South  
Texas

By Bill & Marjorie K. Walraven

Published by the  
Corpus Christi Geological Society

**TOG Exploration LLC**

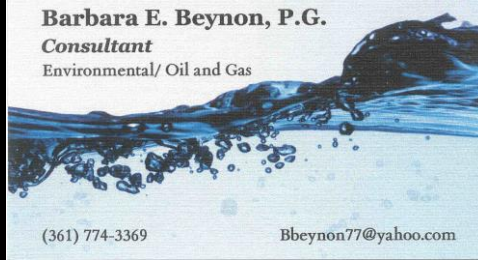
David Becker  
Geologist  
600 Leopard St. Ste 706  
Corpus Christi, TX 78401

dkbecker1137@sbcglobal.net

361-884-3613

**Barbara E. Beynon, P.G.**

**Consultant**  
Environmental/ Oil and Gas



(361) 774-3369

Bbeynon77@yahoo.com



**Dawn S. Bissell**  
Geoscientist

Advent Geoscience Consulting, LLC  
Corpus Christi, TX 78411

Phone: 361-960-2151  
Email: [bissells@swbell.net](mailto:bissells@swbell.net)

MUD LOGGING SERVICE



Since 1961

**MIKE BULLARD**

(361) 221-9717 Office  
(361) 522-1245 Cell  
E-Mail [md\\_bullard@sbcglobal.net](mailto:md_bullard@sbcglobal.net)

(361) 211-9715 Fax  
P.O. Box 1011  
Kingsville, TX 78363



Elizabeth Chapman  
Business development/marketing

**flamingo**  
SEISMIC SOLUTIONS

11777 Katy Freeway, Ste 570 Houston, TX 77079  
office: 281.977.7432 ext 109 fax: 281.829.1788  
cell: 713.817.4232 email: [elizabeth@flamingoseismic.com](mailto:elizabeth@flamingoseismic.com)

[www.flamingoseismic.com](http://www.flamingoseismic.com)

**James L. Claughton**  
CONSULTING GEOLOGIST

Office | 361-887-2991  
Fax | 361-883-4790  
Cell | 361-960-2014  
[clausie@sbcglobal.net](mailto:clausie@sbcglobal.net)

615 North Upper Broadway  
Suite 1935  
Corpus Christi, Texas  
78401-0779

**Jim Collins**  
Geoscientist



361.537.4034  
[jim@gulfcoastgas.com](mailto:jim@gulfcoastgas.com)

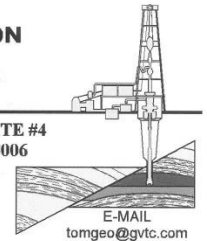
**Imagine Resources, LLC**

**Frank G Cornish**  
President/Consulting Geologist

5103 Turnabout Lane  
Austin, Tx 78731

361-563-9184  
[frank.cornish@gmail.com](mailto:frank.cornish@gmail.com)

**TOM DAVIDSON**  
GEOLOGIST



28550 IH-10 WEST SUITE #4  
BOERNE, TEXAS 78006

BUS: (210) 844-8963  
RES: (830) 981-5883  
FAX: (830) 981-5567  
CEL: (210) 844-8963

E-MAIL  
[tomgeo@gvtc.com](mailto:tomgeo@gvtc.com)

**SEIMAX**  
TECHNOLOGIES

Sara Davis  
Director of Marketing & Business Development

4805 Westway Park Blvd., Houston, TX 77041  
p: 832.554.4301 d: 832.554.4314 c: 713.256.8737  
[sdavis@seimaxtech.com](mailto:sdavis@seimaxtech.com)

**Geotech**  
Logging Services, LLC

Brian Desaulnier  
Owner / President  
512.923.2059  
[brian@gtls.us](mailto:brian@gtls.us)

P.O. Box 305 Office: 512.308.8200  
Red Rock, TX 78662 Fax: 830.839.4832  
[www.geotechloggingservices.com](http://www.geotechloggingservices.com)

Leighton L. Devine  
Exploration Geologist

**SUEMAUR**

Experience. Expertise. Exploration.

p. 361-884-8824 x1103  
c. 361-510-8872  
[ldevine@suemaur.com](mailto:ldevine@suemaur.com)

Suemaur Exploration & Production, LLC  
539 North Carancahua, Suite 1100  
Corpus Christi, TX 78401

**Tommy Dubois**  
Geologist

2627 CR 312  
Yoakum, Texas 77995

361-215-0223 [tvdubois@yahoo.com](mailto:tvdubois@yahoo.com)



**FRONTERA EXPLORATION CONSULTANTS**

Geological and Geophysical Interpretation  
SMT Kingdom™ Workstation

THOMAS E. EWING, PH.D.  
AAPG CPG #4538; Texas Lic. Geol. #1320

19240 Redland Road, Suite 250, San Antonio, TX 78259  
(210) 494-4526; (210) 824-6423 FAX  
[tewing@fronteraexploration.com](mailto:tewing@fronteraexploration.com)

Since  
1982

**FOX ENVIRONMENTAL SERVICES, LLC**

PLANNING | PERMITTING | REAL ESTATE MARKETING MAPS

**LAURA M. FOX**

[LAURA@FOXENVIRONMENTALSERVICES.COM](mailto:LAURA@FOXENVIRONMENTALSERVICES.COM)

P.O. BOX 745  
ROCKPORT, TEXAS 78381

361.319.3119



**MATTHEW FRANEY**  
Consulting Geologist

AAPG Certified Petroleum Geologist #6342  
Texas Licensed Professional Geologist #1169

FRANEY OIL OPERATIONS, INC.  
600 Leopard Street, Suite 904 361-563-6327  
Corpus Christi, TX 78401 [mfraney57@att.net](mailto:mfraney57@att.net)

Enrique (Rick) Garza  
Operation Supervisor  
US Land



Geoscience  
Solutions

[Rick.Garza@GlobalGeophysical.com](mailto:Rick.Garza@GlobalGeophysical.com)  
DIRECT +1 713-908-7428  
WORKS +1 361-701-6480  
FAX +1 713-908-7928  
13927 South Gessner Road  
Missouri City, Texas 77489 USA  
[www.GlobalGeophysical.com](http://www.GlobalGeophysical.com)

**GISLER BROTHERS LOGGING CO., INC.**

P.O. BOX 485  
106 E. MAIN

RUNGE, TX 78151



**Wes Gisler**  
Bus. (830) 239-4651  
Mobile (361) 676-1369

[wes@gislerbrotherslogging.com](mailto:wes@gislerbrotherslogging.com)

**YOUR CARD COULD BE HERE!!!**

**\$30 FOR 10 ISSUES AD. PRICES PRO-RATED. EMAIL ROBBY AT [ROBERT.STERETT@GMAIL.COM](mailto:ROBERT.STERETT@GMAIL.COM).**



**RAY GOVETT, Ph. D.**  
**CONSULTING GEOLOGIST**  
 361-855-0134

**Robert Graham**  
 President  
 grexploration@gmail.com  
 Phone 361-882-7681  
 Fax 361-882-7685  
 Cell 361-774-3635



Exploratory Prospects & Production Development

**Mail:**  
 P. O. Box 1843  
 Corpus Christi, Texas  
 78403-1843  
**Office:**  
 606 N. Carancahua, Ste. 610  
 Corpus Christi, Texas  
 78401-0634



**HART EXPLORATION, LLC.**

**RICK HART**  
 Geologist / Owner

P.O. Box 3576  
 Bandera, Texas 78003  
 Cell: 512-626-3053  
 Email: hartexploration@aol.com

**RIVIERA EXPLORATION, LLC**

**H. TONY HAUGLUM**  
 President

600 LEOPARD ST.  
 SUITE 1704  
 CORPUS CHRISTI  
 TEXAS 78401  
 PHONE 361.884.1811  
 FAX 361.884.8071  
 E-MAIL THAUGLUM@SWBELL.NET

**Chuck Henry**  
 Vice President, Geosciences



T 713.623.7139 M 713.501.9575  
 chenry@frostwoodenergy.com  
 frostwoodenergy.com

6566 Katy Freeway, Suite 100  
 Houston, TX 77024  
*Moving offices on Aug 15<sup>th</sup>*

Brent F. Hopkins  
 President and Chief Executive Officer

**SUEMAUR**

Experience. Expertise. Exploration.

p. 361-884-8824 x1101  
 c. 361-215-4855  
 bhopkins@suemaur.com  
 Suemaur Exploration & Production, LLC  
 539 North Carancahua, Suite 1100  
 Corpus Christi, TX 78401

**James R. Jones**  
 Geologist

**7434 Long S Drive**  
**Corpus Christi, TX 78414**  
**361-779-0537**  
**jrjones5426@aol.com**



**EOG Resources, Inc.**  
 539 N. Carancahua  
 Suite 900  
 Corpus Christi, TX 78401-0908  
 Direct: (361) 887-2681

**Randy Lambert**  
 Geological Advisor

Fax: (361) 844-1546  
 randy\_lambert@eogresources.com

**CURTIS R. MAYO**  
 GEOLOGICAL CONSULTANT

Reserve Analysis Prospect Evaluation  
 Expert Witness Prospect Generation

Fredericksburg, Texas 78624  
 Office: 830.992.2938 Cell: 830.765.0628 E-Mail: cmayo@ctesc.net



**PATRICK J. McCULLOUGH [President]**  
 patrickm@emeraldbayexp.com

311 Saratoga Boulevard Corpus Christi, Texas 78417  
 361.852.6195 [o] 361.852.6676 [f] 361.876.7881 [c]



**Armando Medina**  
 Owner / Geologist

8610 N. New Braunfels #703 • San Antonio, TX 78217  
 (210) 538-2170 • amedina@valorexploration.com



**J. Mark Miller**  
 President

Phone (361) 883-7700  
 Fax (361) 883-7701  
 mark@millersmithgas.com  
 545 N. Upper Broadway  
 Suite 400  
 Corpus Christi, Texas 78476

Wellhead Gas Marketing



www.lmkr.com

mmixon@lmkr.com  
 P: +1 281 495 5657  
 D: +1 281 848 3310  
 C: +1 713 419 8918  
 F: +1 281 879 0135

**Mark Mixon**  
 Account Manager

LMK Resources Inc.  
 6051 North Course Drive, Suite 300,  
 Houston, TX 77072, USA

Mailing Address  
 615 Leopard, Ste. 640  
 Corpus Christi, Texas 78401-0641  
 361.882.7888 phone  
 361.882.7889 fax  
 361.946.2581 mobile

Contact Address  
 1701 Southwest Parkway, Ste. 109  
 College Station, Texas 77840  
 866.946.2581 phone  
 866.946.2580 fax

pmueller@muelrexp.com  
 www.muelrexp.com



**J. Paul Mueller, Jr.**  
 President



**Daniel J. Neuberger**  
 Geologist and President

Austin Office:  
 712 Windsong Trail  
 West Lake Hills, Texas 78746

Office (361) 548-7723  
 Home (512) 306-1223  
 dan@neuoilandgas.com

Patrick Nye  
 President  
 patrick@nyexp.us

Office: (361) 452-1455  
 Cell: (361) 658-1089  
 Res: (361) 238-2146

**NYE**  
 Exploration & Production, LLC

802 N. Carancahua, Suite 1840  
 Frost Bank Plaza  
 Corpus Christi, TX 78401  
 www.nyexp.us



**BRIAN E. O'BRIEN**

510 Bering Drive  
 Suite 600  
 Houston, Texas 77057

Main: 713-783-4883  
 Fax: 713-783-3039  
 Res: 713-784-7911  
 Cell: 713-899-5164  
 E-mail: bobrien@saxetpetroleum.com



**Ken Oriaska**  
 Account Manager

281-497-8440  
 Direct: 281-249-5051  
 Fax: 281-558-8096  
 Cell: 832-455-1818  
 e-mail: koraska@geotrace.com  
 12141 Wickchester Lane, Suite 200  
 Houston, Texas 77079  
 www.geotrace.com

**YOUR CARD COULD BE HERE!!!**

**\$30 FOR 10 ISSUES AD. PRICES PRO-RATED. EMAIL ROBBY AT ROBERT.STERETT@GMAIL.COM.**



## Herradura Petroleum, Inc.

JEFF OSBORN  
Geologist

711 N. Carancahua, Ste. 1750  
Corpus Christi, Texas 78475  
e-mail: jeff@herradurapetroleum.com

Office: 361-884-6886  
Fax: 361-884-9102  
Cell: 361-537-2349



RICHARD E. PAIGE  
CHIEF PROJECT GEOLOGIST

539 N. CARANCAHUA, SUITE 1100  
CORPUS CHRISTI, TEXAS 78401-0999

OFF: (361) 884-8824 (ext. 1121)  
CELL: (361) 563-1517  
HOME: (361) 887-1912  
rpaige@suemaur.com

## Richard M. Parker

Consulting Geologist  
Adjunct Professor – Geosciences  
Texas A&M University - Kingsville  
Registered State of Texas Board of Professional Geoscientists  
License # 6056

12802 Max Rd.  
Brookside Village, Texas 77581  
Email: rparkstar@sbcglobal.net  
Email: Richard.Parker@tamuk.edu

713-724-4380 Cell 1  
713-206-3158 Cell 2  
281-412-0745 Home  
361-593-4072 A&M



VirTex Operating Co., Inc.

615 North Upper Broadway  
Suite 525, WF168  
Corpus Christi, Texas 78401  
Bus (361) 882-3046  
Fax (361) 882-7427

Mobile: (361)443-5593 • E-mail: bpriday@virtexoperating.com

Beth Priday  
Geologist

Minerals Exploration and Mining  
Uranium In Situ Leach

Richard M. Rathbun, Jr.  
Certified Professional Geologist 9544 / AIPG

921 Barracuda Pl.  
Corpus Christi, Texas 78411

(361) 903-8207  
rathbunassoc@msn.com



Barry J. Rava  
President

Mobile: 281-235-7507  
Office: 713-621-7282

barry@icarusog.com  
www.icarusog.com

P.O. Box 820253  
Houston, TX 77282-0253

Deliveries  
1710 S. Dairy Ashford Rd., Ste. 202  
Houston, TX 77077

## First Rock, Inc.

RGR Production

First Rock I, LLC

Gregg Robertson

600 Leopard St., Suite 1800  
Corpus Christi, TX 78401  
361-884-0791

Email  
firstrockinc@msn.com  
Cell  
210-260-0300



Wireline Services

Weatherford International Ltd.  
401 E. Sonterra Blvd., Suite 1  
San Antonio, Texas 78258  
USA

Sam Roach  
US Gulf Coast Wireline Sales

+1.210.930.7588 Direct  
+1.210.930.7610 Fax  
+1.210.241.2463 Mobile

sam.roach@weatherford.com  
www.weatherford.com



Alvin Rowbatham  
Sales, Gulf of Mexico

Main +1 713 789 7250  
Direct +1 281 781 1065

Fax +1 713 789 7201

Mobile +1 832 372 2366

alvin.rowbatham@iongeo.com

2105 CityWest Blvd. | Suite 900  
Houston, TX 77042-2839 USA



Doug Sartoris

Exploration Geologist / Managing Partner

800 North Shoreline Blvd.  
Suite 2570 South  
Corpus Christi, TX 78401

Office: 361-884-1130  
Cell: 361-548-1130  
doug@dsxenergy.com



GEOLOGICAL CONSULTING / SURFACE LOGGING SERVICES

P.O. Box 61150  
Midland, TX 79711

4833 Saratoga #624  
Corpus Christi, TX 78413

P.O. Box 2993  
Rock Springs, WY 82902

TOM SELMAN  
selmanlog.com  
tselman@selmanlog.com

Ofc. (432) 563-0084  
(800) 578-1006  
Cell (432) 288-2259



Petrophysics, Inc.

Velocity Surveys • Synthetics • Sonic Log Data

P.O. Box 863323  
Plano, Texas 75086

713.560.9733  
jsmith@petrophysics.com  
www.petrophysics.com

Joe H. Smith  
President

## Crossroads Exploration

Gloria D. Sprague  
Geologist

189 North First Street, Suite 111  
Timpson, Texas 75975

Office: 936-254-3600  
Mobile: 936-488-9428

gsprague4532@att.net



ROBBY STERETT  
GEOLOGIST

P.O. Box 907  
CORPUS CHRISTI, TEXAS 78403

OFFICE (361) 887-2981  
CELL (361) 739-5618  
EMAIL RSTERETT@DAHCO.US

Charles A. Sternbach, Ph.D.  
President

Star Creek Energy Company  
Oil and Gas Exploration

800 Wilcrest Drive, Suite 230  
Houston, Texas 77042  
office: 281.679.7333  
cell: 832.567.7333  
carbodude@gmail.com



www.starcreekenergy.com

THOMAS W. SWINBANK  
CERTIFIED PETROLEUM GEOLOGIST  
PRESIDENT

STRIKE OIL & MINERALS CORP.  
P.O. Box 1339  
GEORGETOWN, TEXAS 78627

PHONE/FAX 512-863-7519  
HOME 512-863-7903  
CELL 512-876-9595

Dennis A. Taylor  
President and Chief Geologist  
dennis@amshore.com



AMERICAN SHORELINE, INC.

AMSHORE US WIND, LLC

802 N. Carancahua Street, Suite 1250  
Corpus Christi, Texas 78401-0019

www.amshore.com

Off: (361) 888-4496  
Fax: (361) 888-4588  
Direct Line: (361) 844-6728  
Cell: (972) 672-9916

Environmental

Exploration & Production

JEANIE TIMMERMANN

GEOSCIENTIST

TX LICENSE #2289

7214 Everhart #9  
Corpus Christi, TX 78413

(361) 991-7451

jtimmermann74@msn.com

YOUR CARD COULD BE HERE!!!

\$30 FOR 10 ISSUES AD. PRICES PRO-RATED. EMAIL ROBBY AT ROBERT.STERETT@GMAIL.COM.



**Davis  
Petroleum  
Corp.**

www.davispetroleumcorp.com

**Jim Travillo**  
Senior Geoscientist

1330 Post Oak Boulevard  
Suite 600  
Houston, Texas 77056

**Direct: 713.439.6773**  
Main: 713.826.7766  
Fax: 713.826.7775  
Cell: 713.823.9332

jtravillo@davcos.com



**WILLIAM A. WALKER, JR.**  
Certified Petroleum Geologist  
bwalker@stalkerenergy.com

1717 West 6<sup>th</sup> Street, Ste. 230 • AUSTIN, TX 78703  
2001 Kirby Dr., Ste. 950 • HOUSTON, TX 77019

AUSTIN

512.457.8711

cell: 512.217.5192

fax: 512.457.8717

HOUSTON

713.522.2733

cell: 512.217.5192

fax: 713.522.2879

**SEBASTIAN P. WIEDMANN**  
GEOSCIENTIST

4425 DRIFTWOOD PLACE  
CORPUS CHRISTI, TEXAS 78411  
swiedmann.geo@gmail.com

MOBILE (361) 946-4430



**Dave Willis**  
Onshore Sales

Main +1 713 789 7250  
Direct +1 281 781 1035  
Mobile +1 281 543 6189  
Fax +1 713 789 7201  
dave.willis@iongeo.com

2105 CityWest Blvd. | Suite 900  
Houston, TX 77042-2839 USA

**ROLF WOODS**  
Exploration Geologist



**ESENJAY**  
PETROLEUM CORPORATION

500 N. Water St., Ste. 1100S — CORPUS CHRISTI, TX 78401-0236  
Work: (361) 883-7464 • Fax: (361) 883-3244 • Cell: (361) 947-9200  
e-mail: rwwoods@gmail.com



**MILLENNIUM**  
PETROCAPITAL CORPORATION

[www.millenniumpetrocapital.com](http://www.millenniumpetrocapital.com)

# SEEKING DEALS

- 3-D Seismic Based Prospects in the Gulf Coast Region of Texas
- Conventional or Tight Oil Sands Only
- Leased or Unleased
- Operations Preferred



The Millennium family of companies are a privately held oil and natural gas exploration and production enterprise founded in 2006 and are headquartered in San Antonio, Texas.

Geographically focused, Millennium specializes in developing and producing reserves in the Gulf Coast regions of Texas. Our team aggressively pursues large working interest positions with operations in prospects with strong geological merit, well control and reliable seismic interpretations.

To present your prospect for consideration, please email a summary and/or any associated confidentiality documents to our exploration team:

[geology@millenniumpetrocapital.com](mailto:geology@millenniumpetrocapital.com)